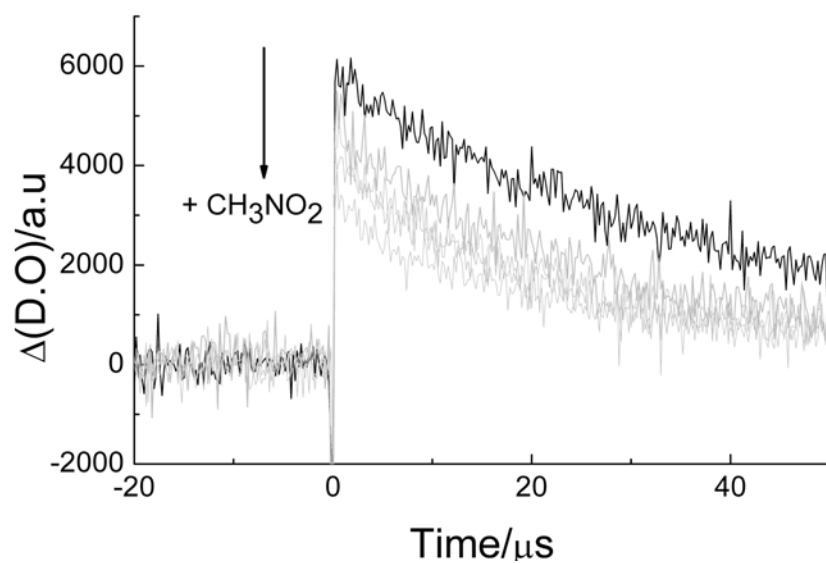


Fig. S1. Dependence of the absorption at 420 nm of a Cs[CB₁₁H₁₂] methanolic solution upon laser power. The solid line corresponds to the best fit obtained with a 2nd-order polynomial function.



Table

$[\text{CH}_3\text{NO}_2]$	$\tau(\mu\text{s})$	τ_0/τ
0	38	1
3.50E-04	24.11	1.576
6.99E-04	19.26	1.973
1.39E-03	18.97	2.003
2.09E-03	17.95	2.117

Fig. S2. Quenching of Cs[CB₁₁H₁₂] with nitromethane. The Figure shows the temporal profiles of the absorption at 420 nm of a Cs[CB₁₁H₁₂] before (black curve) and after adding increasing amounts of CN₃NO₂. The values obtained for the fitting of the curves to first-order exponential decays are shown in the Table.

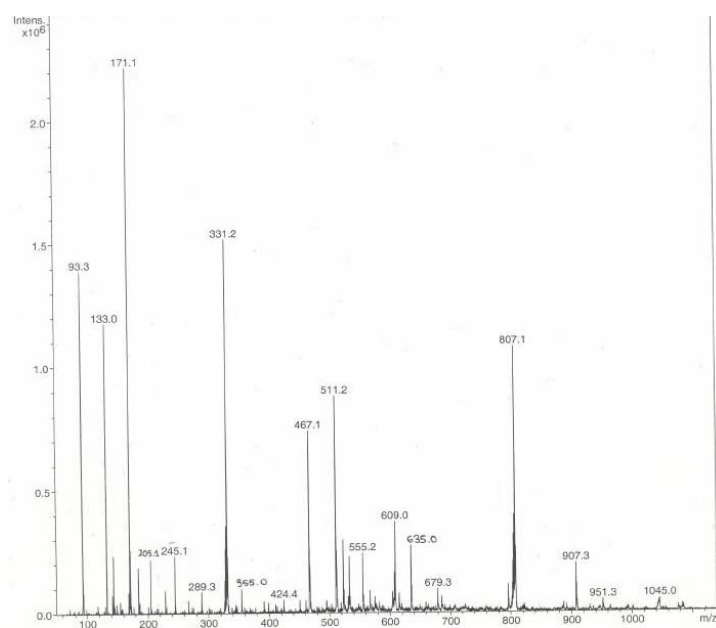
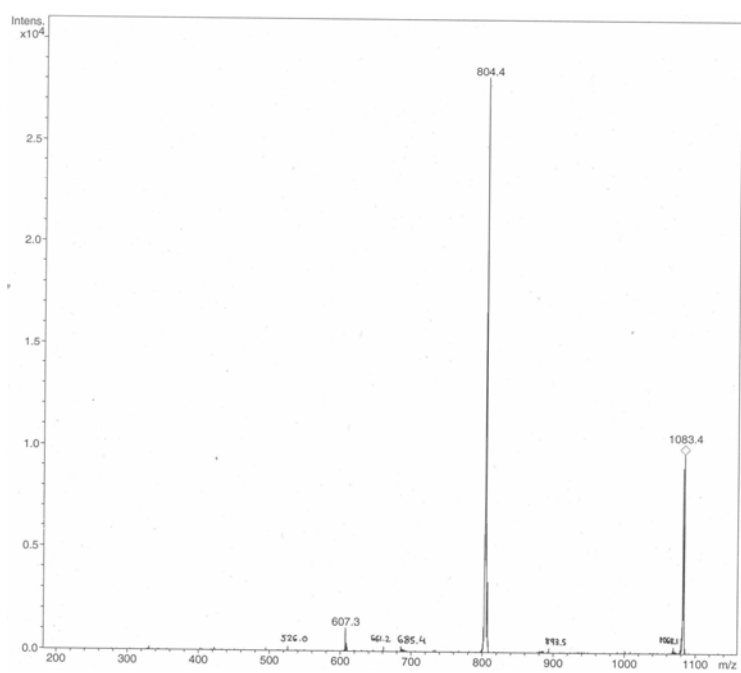


Fig. S3. ESI-MS of a coloured equimolar mixture of Cs[CB₁₁H₁₂] and MV(PF₆)₂ in acetonitrile.