

Supporting Information

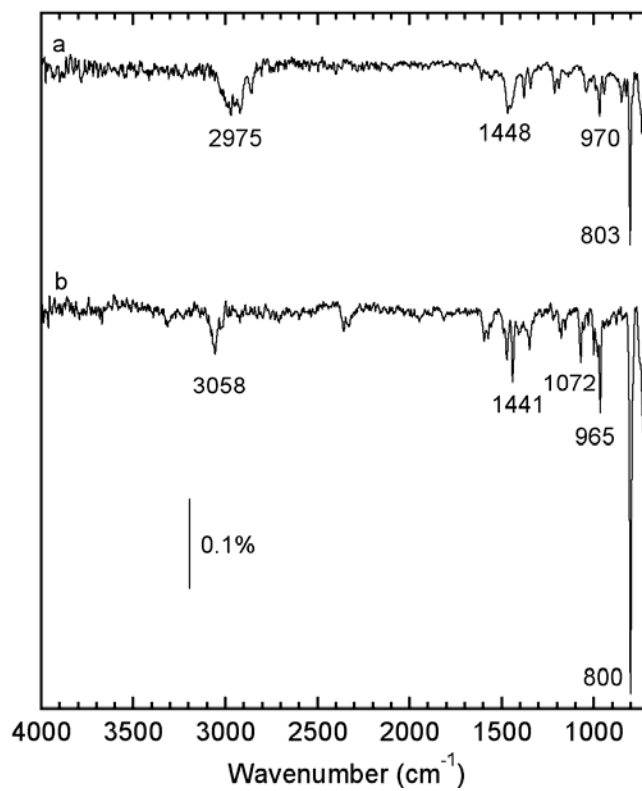
a)RAIRS of Tetra(mesityl)porphyrin (1) on Cu(110), 300K

b)RAIRS of Tetraphenylporphyrin on Cu(110), 300K

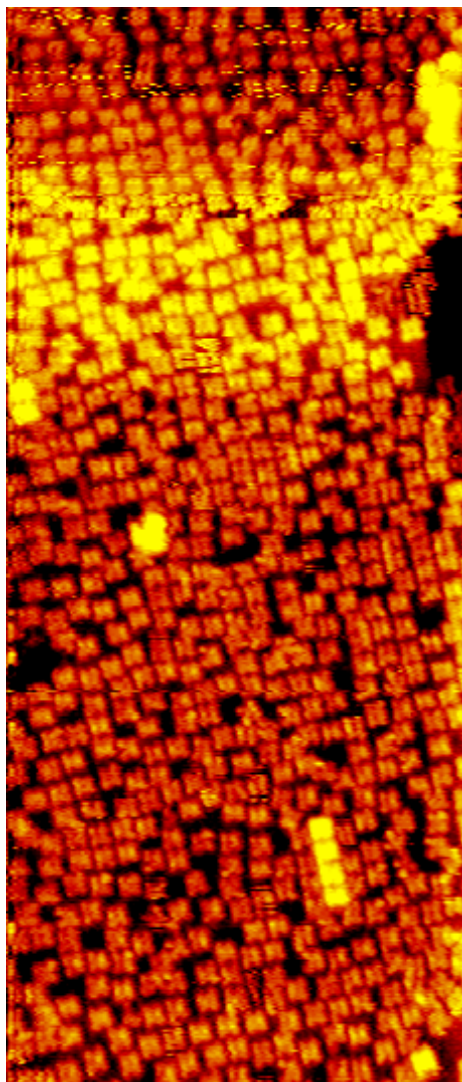
5 **Both sets of data show a close correspondence to data obtained from pressed KBr discs of the original porphyrin**

10

15



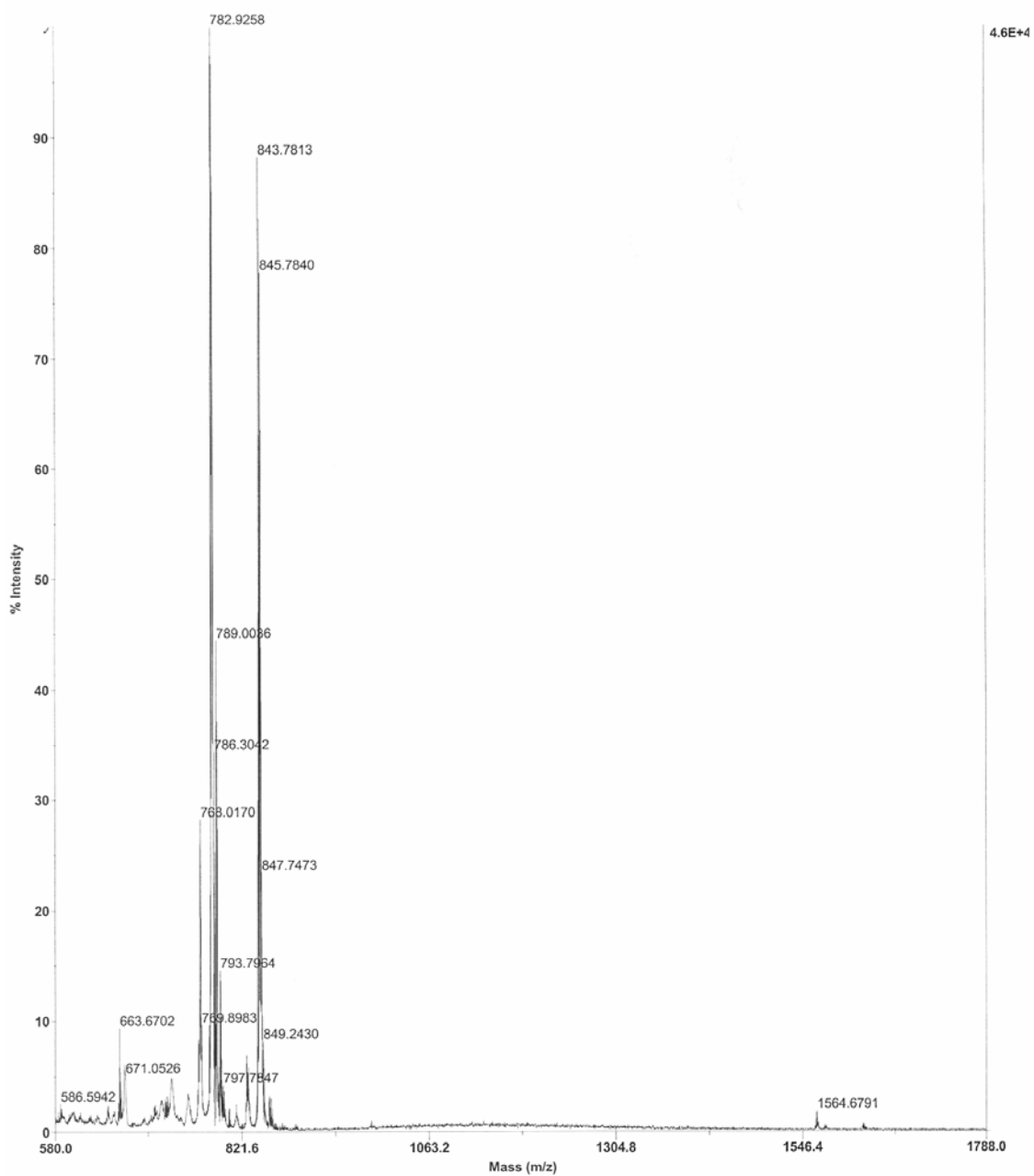
High coverage STM image



STM image (50 x 90 nm) of **1** at high coverage on Cu(110)

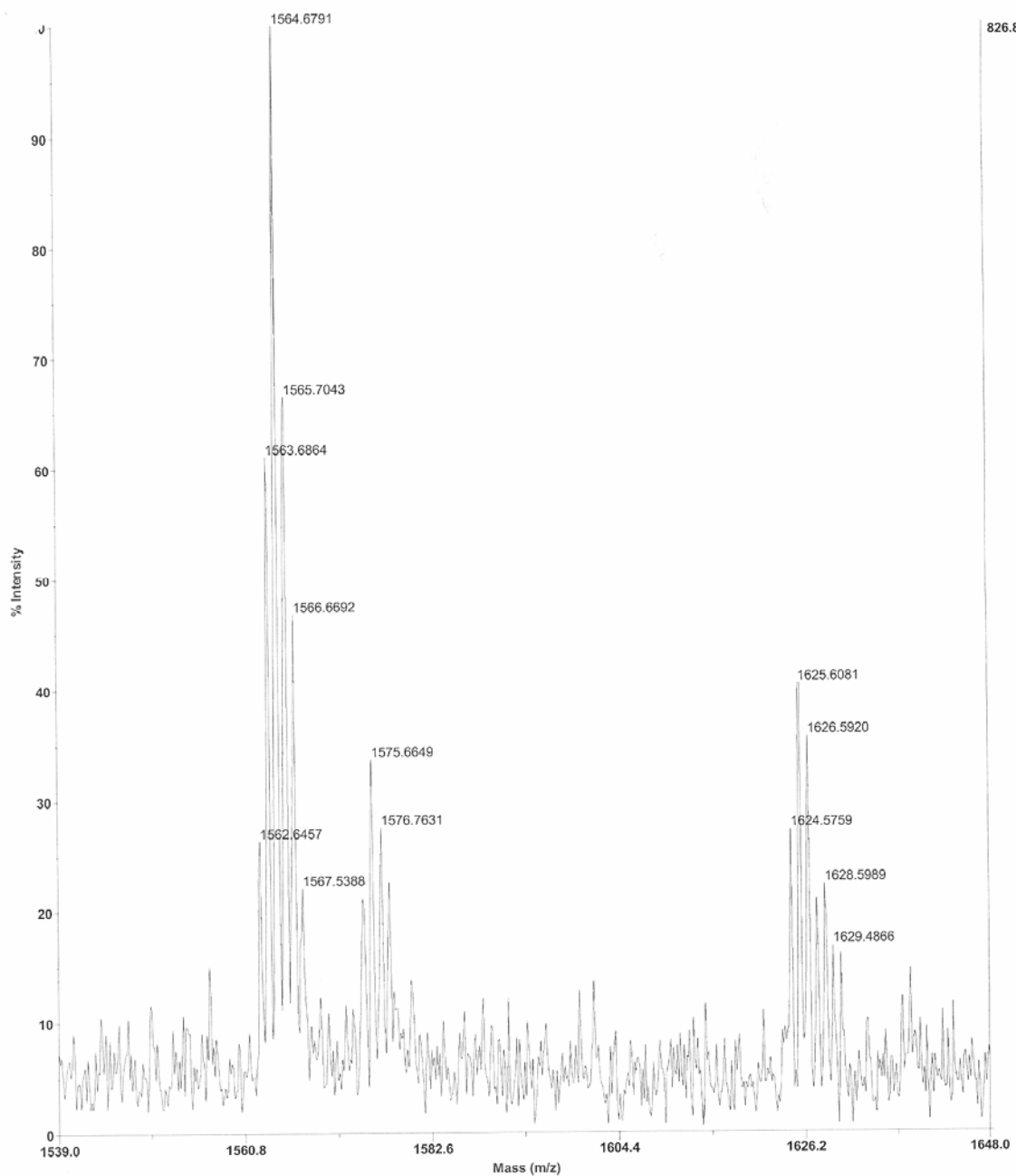
Laser Desorption-Ionisation Time of Flight Mass Spectrometry (LDI-TOF MS)

25

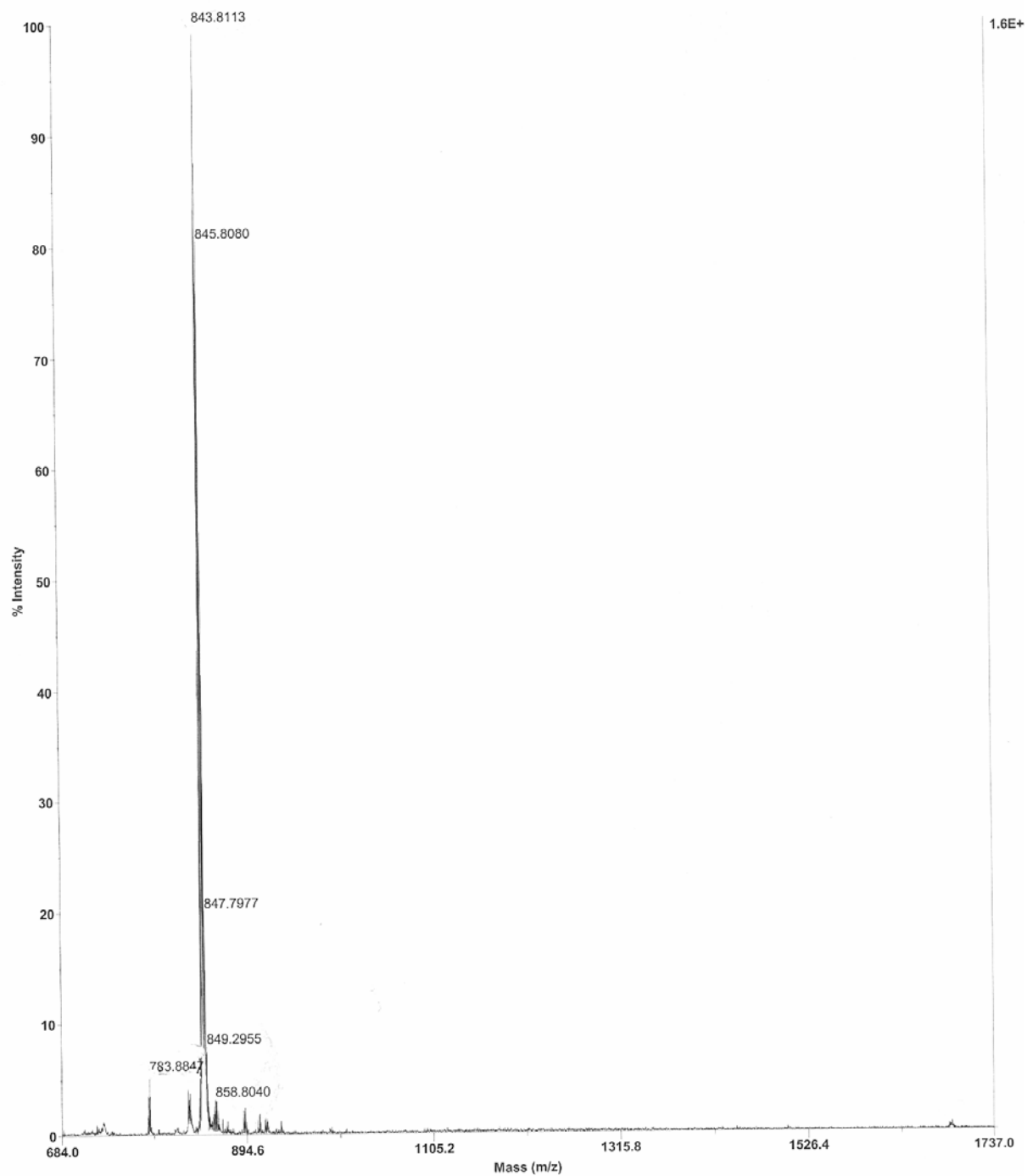


LDI-TOF MS in positive mode of a sample of **1** heated with a large excess of copper turnings at 180°C.

30



LDI-TOF MS in positive mode of a sample of **1** heated with a large excess of copper turnings at 180°C.



35

LDI-TOF MS in positive mode of a sample of **1** heated with a large excess of copper turnings in DMF at 100°C.