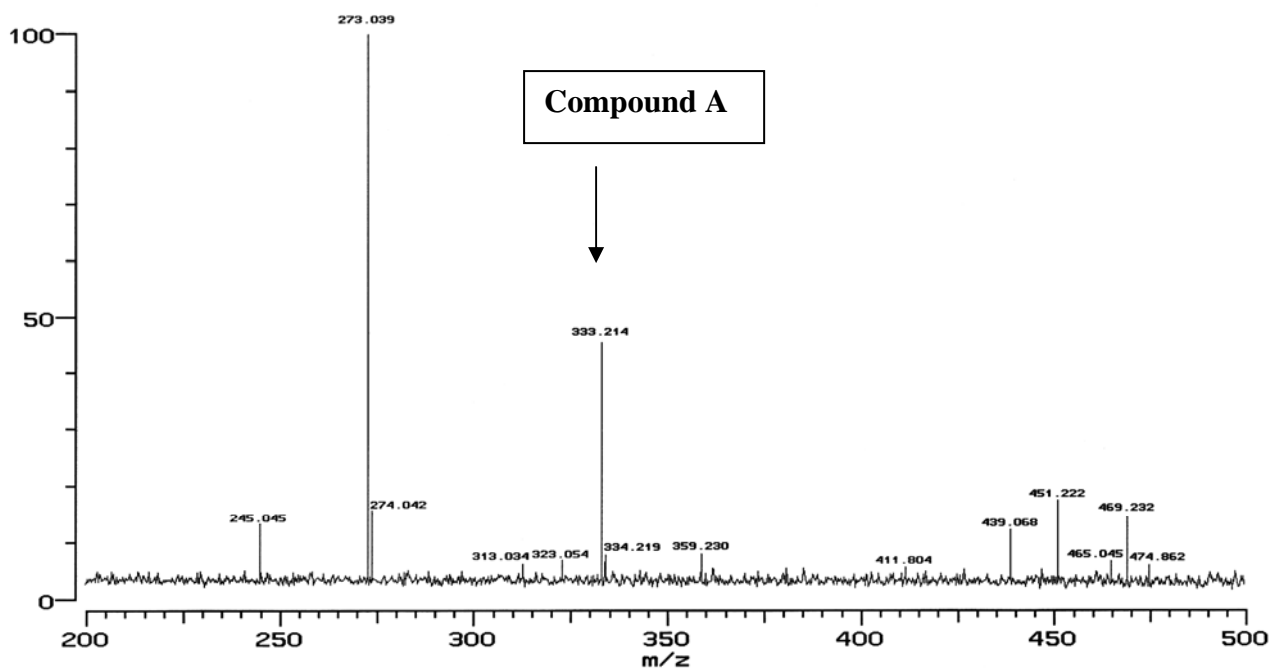


IonSpec HiResMALDI

File: c:\ionspec\ftdata\KB080311.003

MDWF19 on 2,5-dhb m/z=350

Date: 11-MAR-2008
Time: 17:11:27
Mode: Positive
Scans: 10
Scale: 42.8720
(Peak Match)

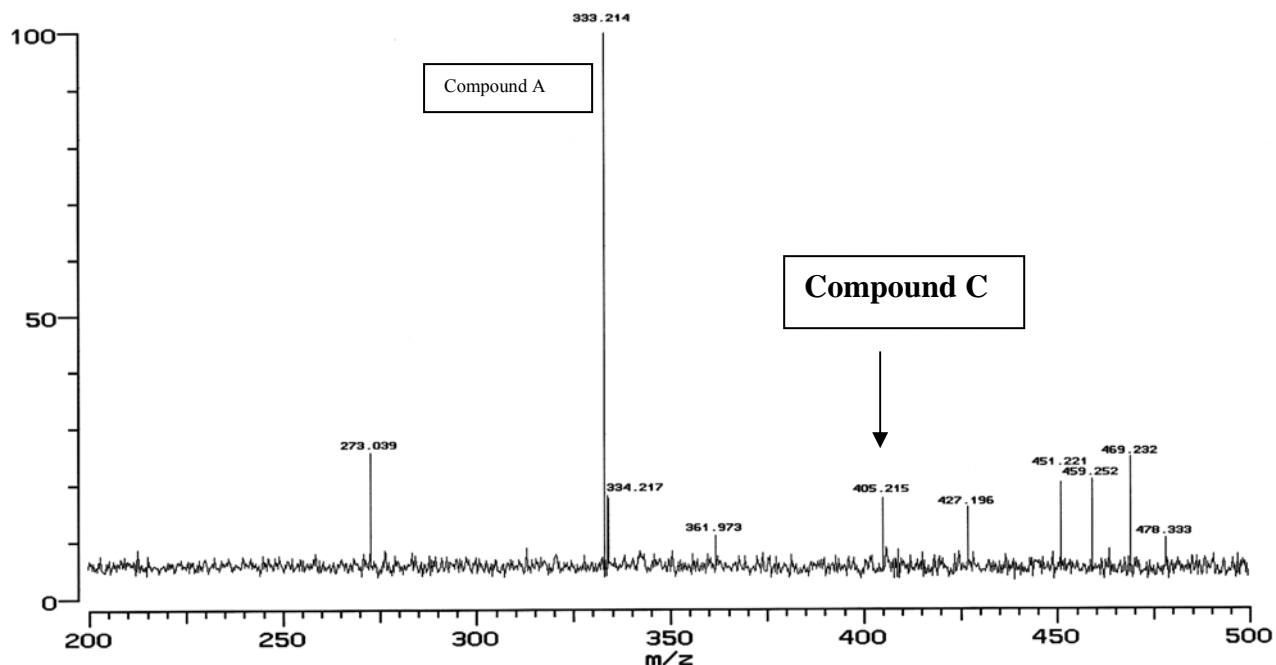


Fraction 19 from preparative reversed-phase HPLC

Compound A ($C_{17}H_{37}AsO$ (calcd for $[M+H]$ 333.2134; found 333.2139; $\Delta m = 1.5$ ppm)

 **IonSpec HiResMALDI**
File: c:\ionspec\ftdata\KB080311.001
MDWF18 on 2,5-dhb m/z=350


Date: 11-MAR-2008
Time: 15:44:12
Mode: Positive
Scans: 5
Scale: 99.4221
(Peak Match)



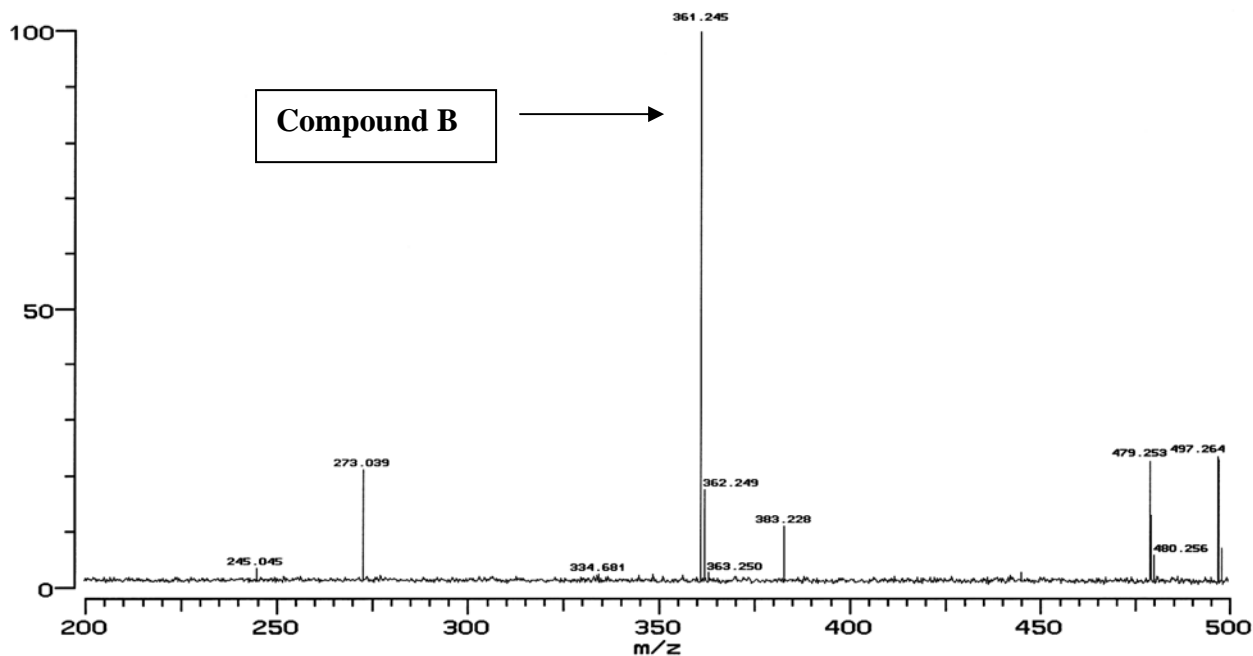
Fraction 18 from preparative reversed-phase HPLC

Compound C (and compound A)

Compound C: $C_{23}H_{37}AsO$ (calcd for $[M+H]$ 405.2134; found 405.2149; $\Delta m = 3.7$ ppm).

 **IonSpec HiResMALDI**
File: c:\ionspec\ftdata\KB080311.000
MDWF20 on 2,5-dhb m/z=350

Date: 11-MAR-2008
Time: 15:35:29
Mode: Positive
Scans: 5
Scale: 28.5868
(Peak Match)



Fraction 20 from preparative HPLC

Compound B: $C_{19}H_{41}AsO$ (calcd for $[M+H]$ 361.2446; found 361.2450; $\Delta m = 1.1$ ppm).