

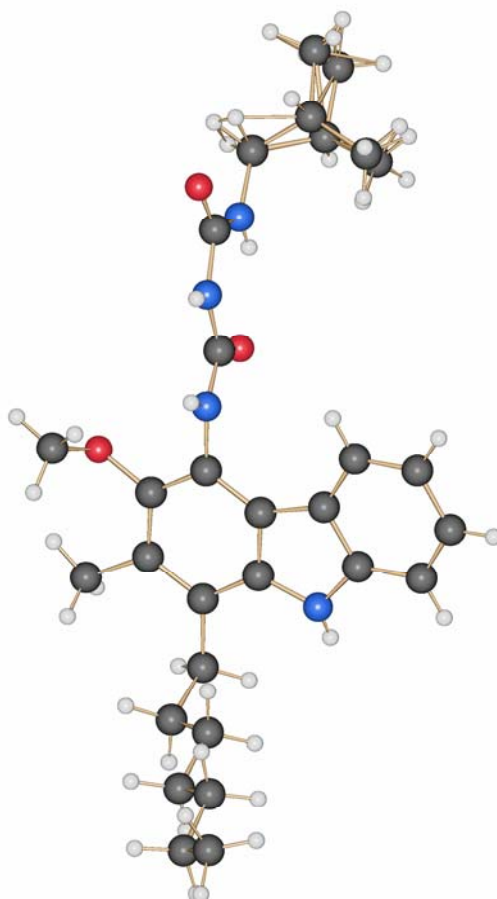
## Refinement Special Details

Crystal structure of **21** (CCDC 708520):

The low data completeness of 90.1% arises from the size of the crystals. Therefore the diffracting power is limited. It is not a result of a disorder in the molecule (see  $R_{\text{Int}} = 0.0342$ ).

Crystal structure of **24d** (CCDC 708521):

For clarity, the disordered part of the structure has been omitted in Fig. 4 of the manuscript. The disorder of the biuret side chain of the molecule is shown here:



The remaining electron density could not be described in a meaningful way. The solvent free reflection dataset was produced by PLATON/SQUEEZE.