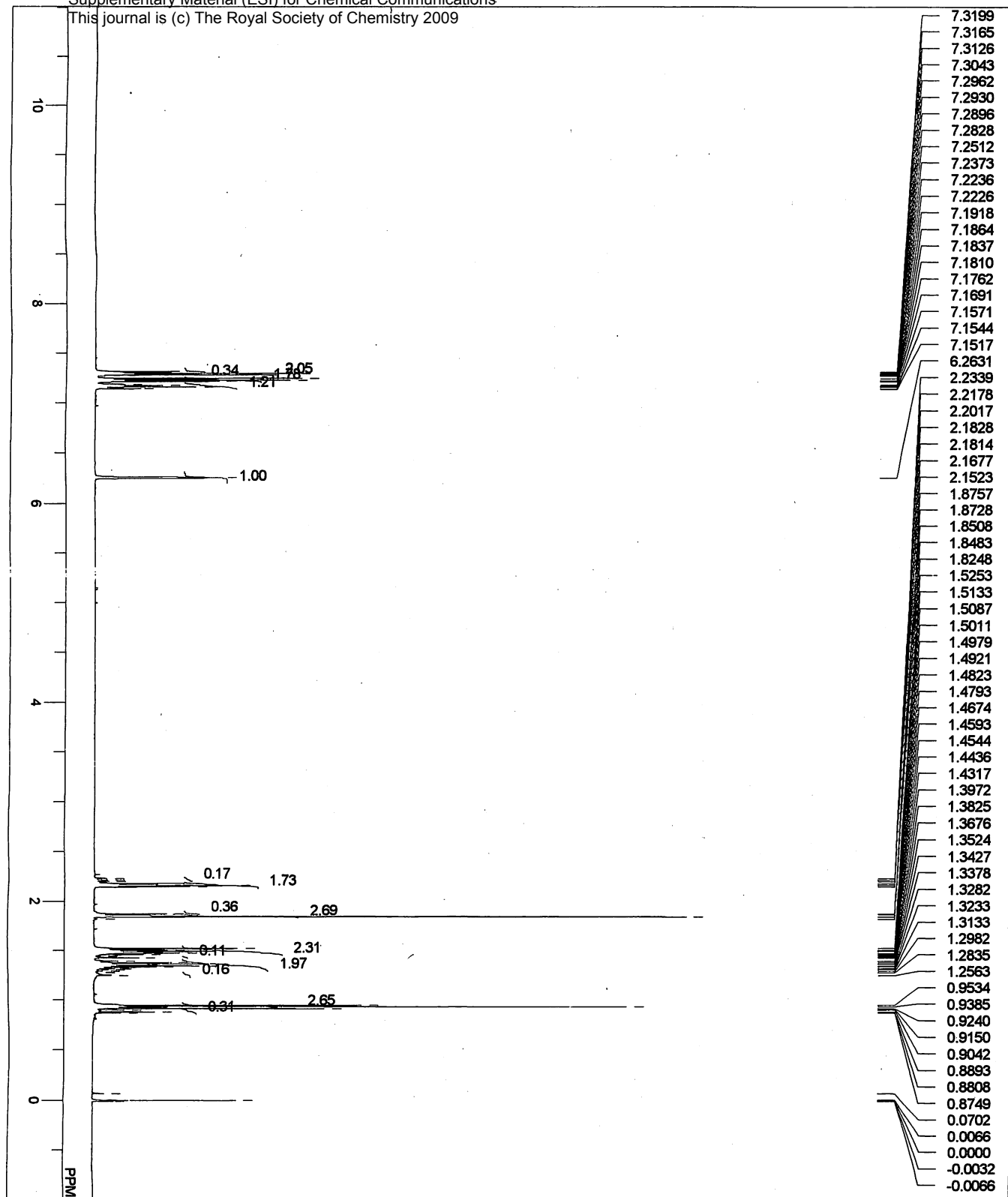
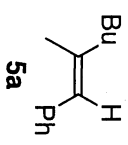


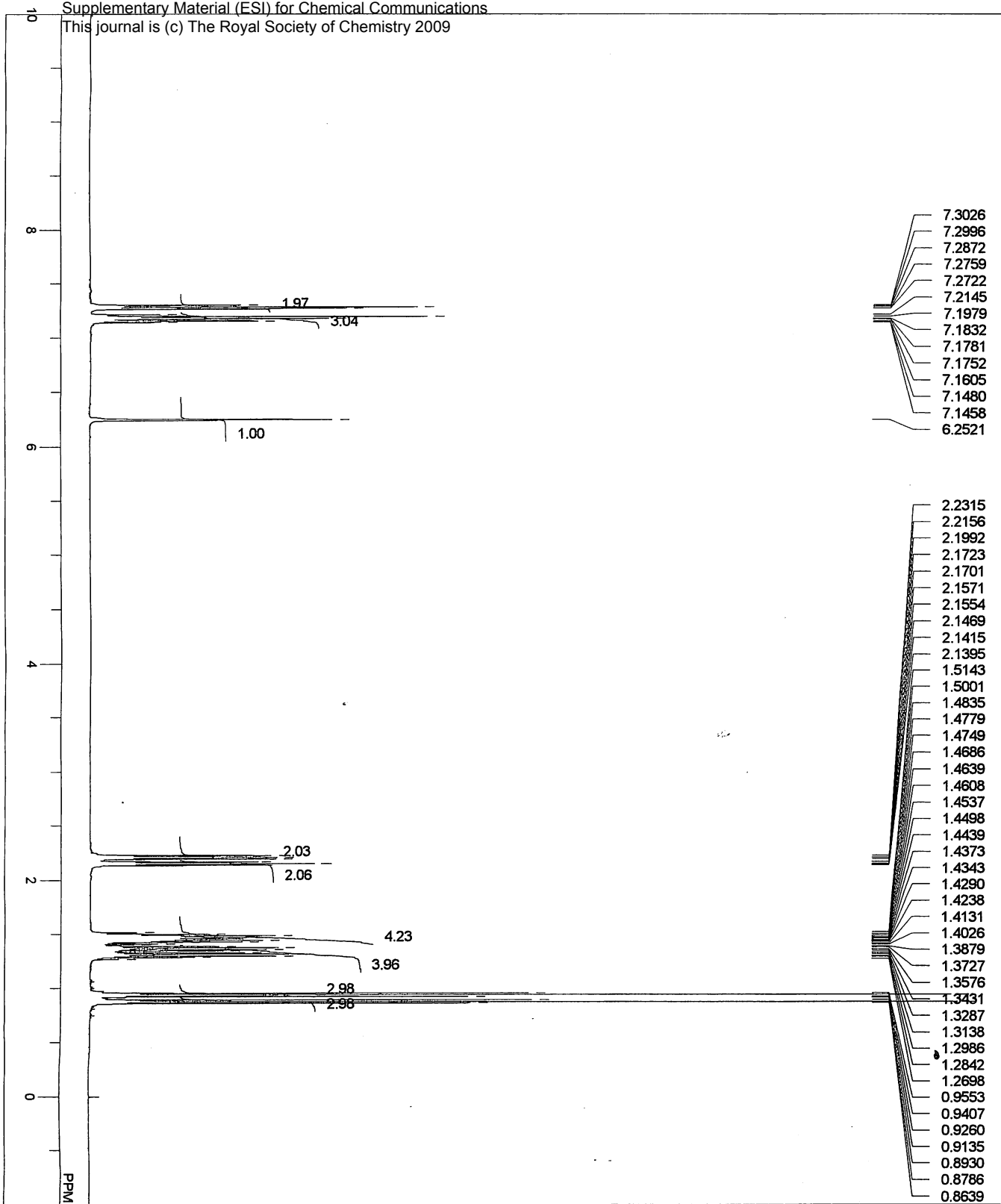
C:\Wrlambda\COMMON\_DEFAULT.ALS



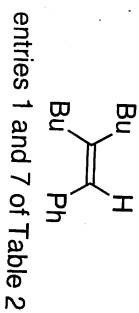
MENUF 1H  
 OBNUC 1H  
 OFR 499.10 MHz  
 OBSSET 0.00 KHz  
 OBFIN 128885.00 Hz  
 PW1 5.50 usec  
 DEADT 72.30 usec  
 PREDL 0.071000 msec  
 IWT 1000.0000 msec  
 POINT 65536  
 SPO 65536  
 TIME 16  
 DUMIN 0  
 FREQ 8000.00 Hz  
 FLT 4000 Hz  
 DELAY 50.00 usec  
 ACQTM 8.1920 sec  
 PD 1.0000 sec  
 ADBIT 16  
 RGAIN 22  
 BF 0.12 Hz  
 T1 0.00  
 T2 0.00  
 T3 90.00  
 T4 100.00  
 EXMOD non  
 EXPCM single pulse nondecoupling & nonpresaturation  
 IRNUC 1H  
 IFR 499.10 MHz  
 IRSET 0.00 KHz  
 IRFIN 128250.00 Hz  
 IRRPW 50 usec  
 IRATN 511  
 DFILE -DEFAULT.ALS  
 SF thesat  
 LKSET 0.00 KHz  
 LKFIN 26934.0 Hz  
 LKLEV 200  
 LGAIN 22  
 LKPHS 353  
 LKSIG 1128  
 CSPED 11 Hz

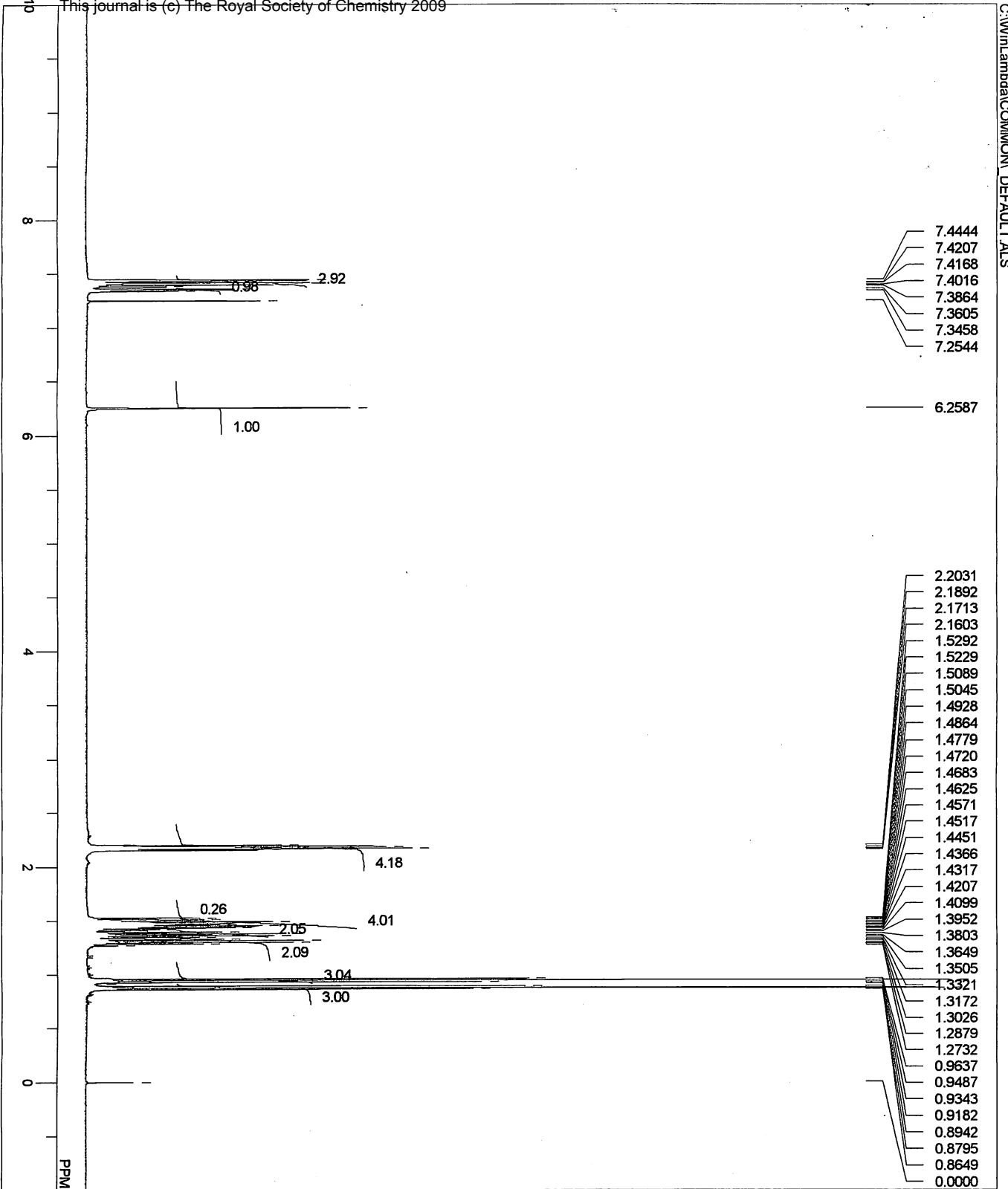
CDCL3  
 Tue Dec 23 17:48:11 2008



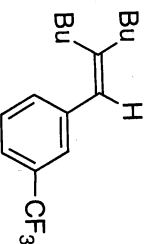


MENU/F	1H
OBNUC	1H
OFR	499.10 MHz
OBSET	0.00 KHz
OBFIN	128850.00 Hz
PW1	5.50 usec
DEADT	72.30 usec
PREDL	0.01000 msec
IWT	1000.0000 msec
POINT	65536
SPO	65536
TIMES:	8
DUMMY	0
FREQU	8000.00 Hz
FLT	4000 Hz
DELAY	50.00 usec
ACQTM	8.1920 sec
PD	1.0000 sec
ADBIT	16
RGAIN	14
BF	0.12 Hz
T1	0.00
T2	0.00
T3	90.00
T4	100.00
EXMCD	non
EXPCM	single pulse nondecoupling & nonpresaturation
IRNUC	1H
IFR	499.10 MHz
IRSET	0.00 KHz
IRFIN	128250.00 Hz
IRRPW	50 usec
IRATN	511
DFILE	_DEFAULT.ALS
SF	th5at
LKSET	0.00 KHz
LKFIN	26934.0 Hz
LKLEV	200
LGAIN	20
LKPHS	349
LKSIG	657
CSPED	17 Hz
FILDC	
FILDF	
SLVNT	CDCL3
DATIM	Sat Feb 23 19:59:23 2008

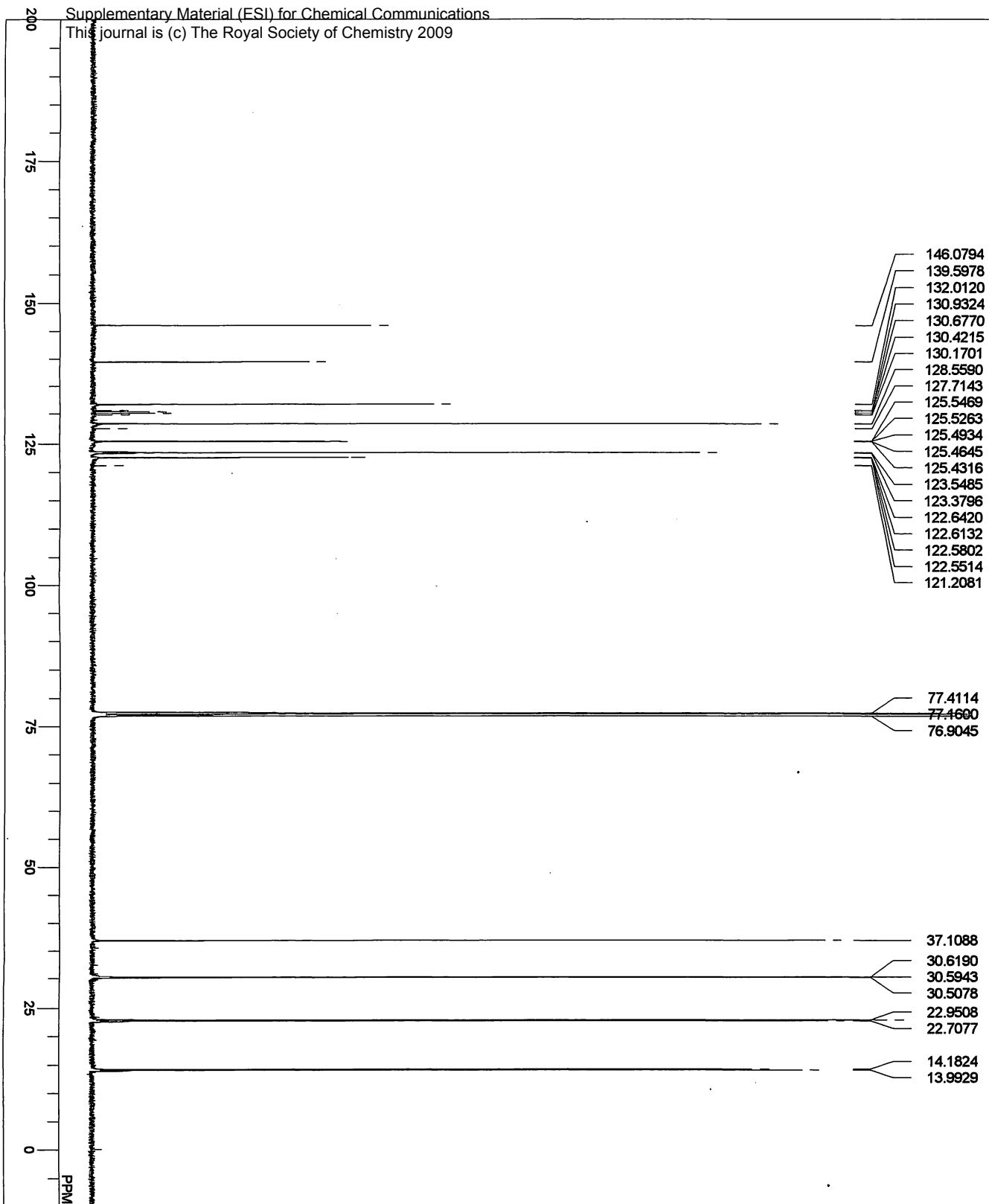




MENU/F	1H
ORNUC	1H
OFFR	499.10 MHz
OBSET	0.00 KHz
OFFIN	128885.00 Hz
PW1	5.50 usec
DEADT	72.30 usec
PREDL	0.01000 msec
IMT	1000.0000 msec
POINT	65536
SPO	65536
TIMES	8
DUMMY	0
FREQU	8000.00 Hz
FLT	4000 Hz
DELAY	50.00 usec
ACQTM	8.1920 sec
PD	1.0000 sec
ADBIT	16
RGAIN	19
BF	0.12 Hz
T1	0.00
T2	0.00
T3	90.00
T4	100.00
EXMOD	non
EXP-CM	single pulse nondecoupling & nonpresaturation
IRNUC	1H
IR	499.10 MHz
IRSET	0.00 KHz
IRFIN	128250.00 Hz
IRRPW	50 usec
IRATN	511
DRFILE	_DEFAULT.ALS
SF	th5at
LKSET	0.00 KHz
LKFIN	26934.0 Hz
LKLEV	200
LGAIN	20
LKPHS	349
LKSIG	705
CSPED	17 Hz
FILDC	
FILDF	
SILVNT	
DATIM	

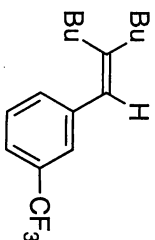


entry 2 of Table 2

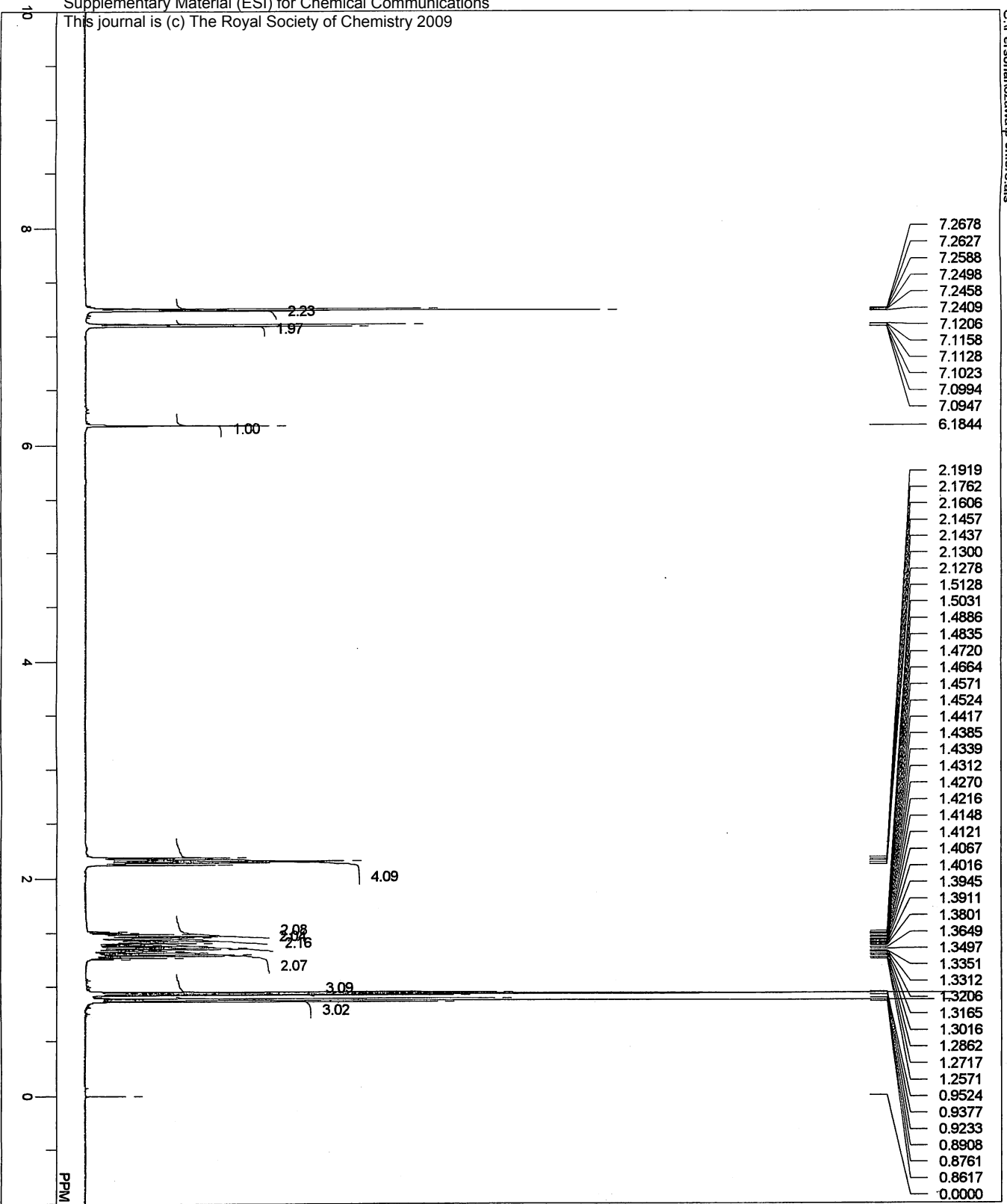


MENUF 13C  
OBRUC 13C  
OFR 125.40 MHz  
OBSET 0.00 KHz  
OBFIN 143041.00 Hz  
PW1 6.25 usec  
DEADT 10.00 usec  
PREDL 0.01000 msec  
WVT 1000.0000 msec  
POINT 65536  
SPO 65536  
TIMES 100000  
DUMMY 2  
FREQU 33898.30 Hz  
FLT 16950 Hz  
DELAY 11.80 usec  
ACQTM 1.9333 sec  
PD 1.0670 sec  
ADBIT 16  
RGAIN 30  
BF 1.20 Hz  
T1 0.00  
T2 0.00  
T3 90.00  
T4 100.00  
EXMOD bcm  
EXPCD single pulse with bilvel decoupling  
IRNUC 1H  
IRFR 499.10 MHz  
IRSET 0.00 KHz  
IRFIN 128250.00 Hz  
IRRPW 50 usec  
IRATN 511  
DFILE m-trifluoromethyl-c13-2nd.a1s  
SF th5at  
LKSET 0.00 KHz  
LKFIN 26934.0 Hz  
LKLEV 200  
LGAIN 20  
LKPHS 353  
LKSIG 546  
CSPED 15 Hz  
FLDF  
FLDC  
SIVNT  
DATIM

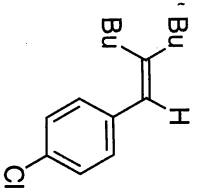
CDCl<sub>3</sub>  
Wed Mar 05 06:50:43 2008



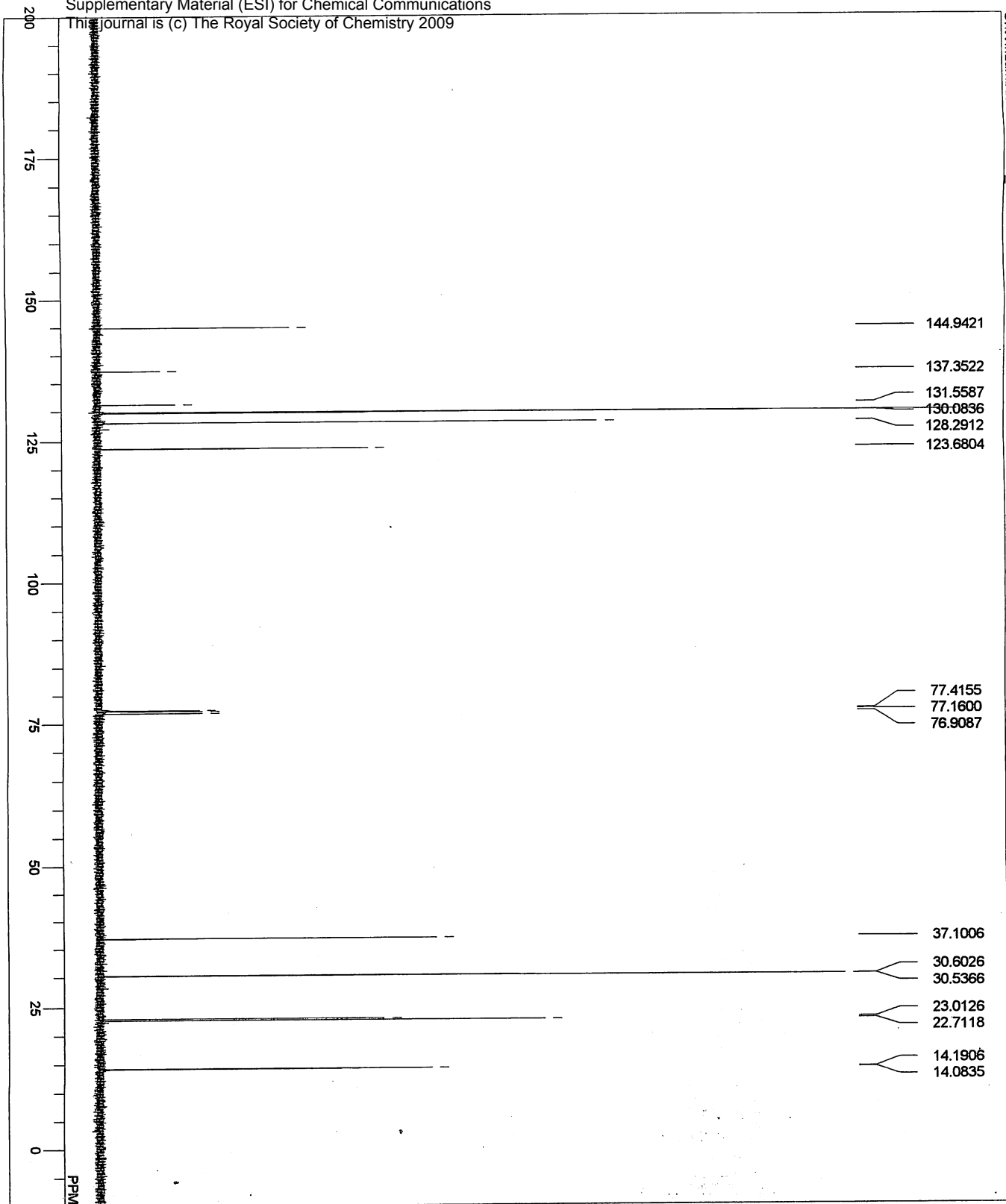
entry 2 of Table 2



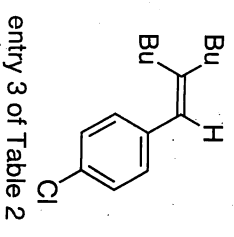
Parameter	Value
MENUF	1H
OBNUC	1H
OFR	499.10 MHz
OBSSET	0.00 KHz
OBFIN	128885.00 Hz
PW1	5.50 usec
DEADT	72.30 usec
PREDL	0.010000 msec
IWT	1000.0000 msec
POINT	65536
SPO	65536
TIMES	8
DUMNY	0
FREQU	8000.00 Hz
FLT	4000 Hz
DELAY	50.00 usec
ACQTM	8.1920 sec
PD	1.0000 sec
ADBIT	16
RGAIN	16
BF	0.12 Hz
T1	0.00
T2	0.00
T3	90.00
T4	100.00
EXMOD	non
EXPCM	single pulse nondecoupling & nonpresaturation
IRNUC	1H
IFR	499.10 MHz
IRSET	0.00 KHz
IRFIN	128250.00 Hz
IRRPW	50 usec
IRATN	511
DFILE	p-chloro.als
SF	thsat
LKSET	0.00 KHz
LKFIN	26934.0 Hz
LKLEV	200
LGAIN	20
LKPHS	349
LKSIG	711
CSPED	16 Hz
FILDC	
FILDF	
SLVNT	CDCl3
DATM	Tue Feb 26 00:20:55 2008

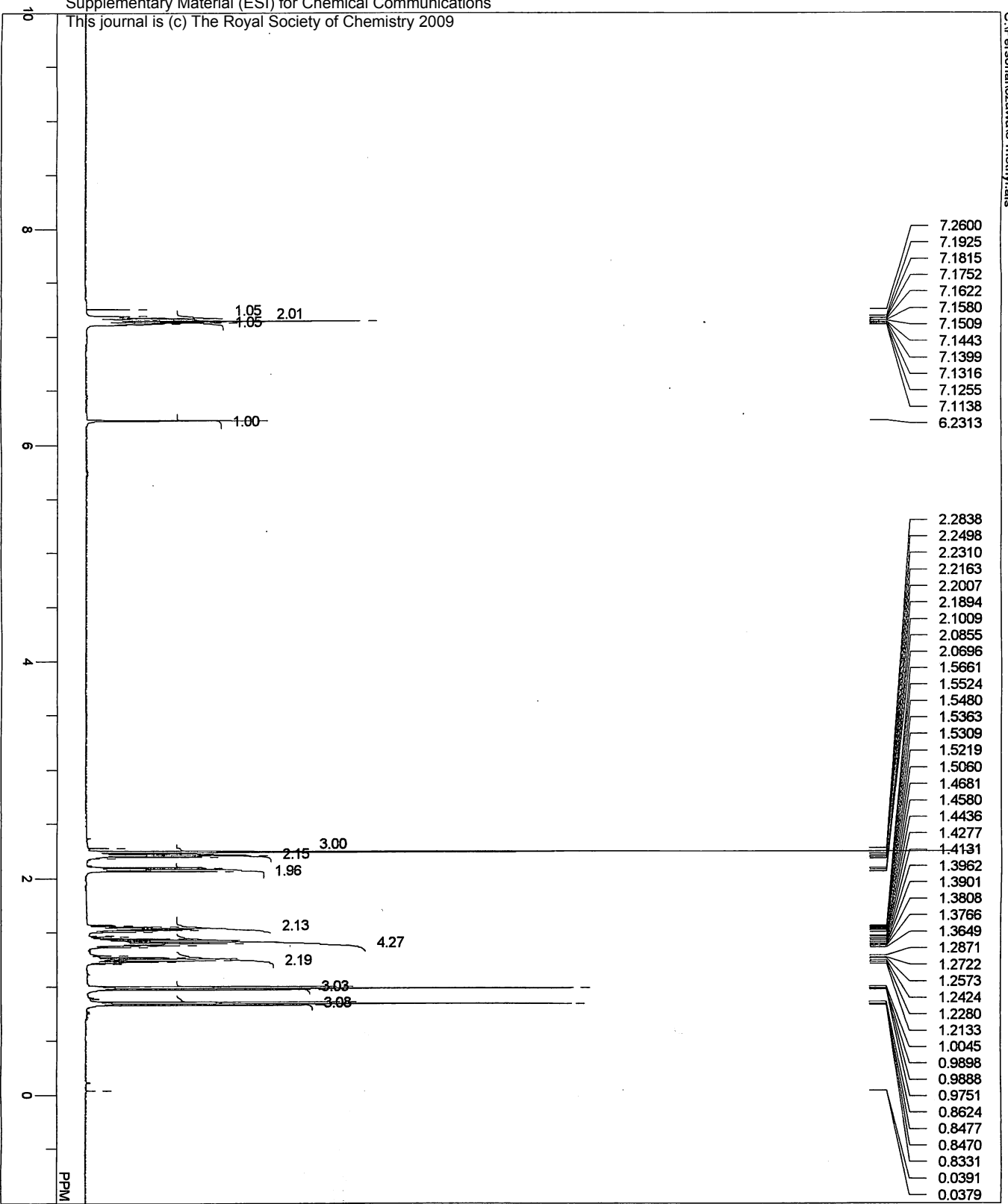


entry 3 of Table 2



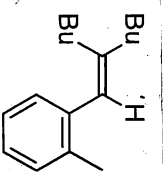
MENUF 13C  
 OBNUC 13C  
 OFR 125.40 MHz  
 OBSET 0.00 KHz  
 OBFIN 143041.00 Hz  
 PW1 6.25 usec  
 DEADT 10.00 usec  
 PREDL 0.01000 msec  
 IWT 1000.0000 msec  
 POINT 65536  
 SPO 65536  
 TIMES 1024  
 DUMMY 2  
 FRECU 33898.30 Hz  
 FLT 16950 Hz  
 DELAY 11.80 usec  
 ACQTM 1.9333 sec  
 PD 1.0670 sec  
 ADBIT 16  
 RGAIN 29  
 BF 0.12 Hz  
 T1 0.00  
 T2 0.00  
 T3 90.00  
 T4 100.00  
 EXMOD bern  
 EXPCM single pulse with bi-level decoupling  
 IRNUC 1H  
 IFR 499.10 MHz  
 IRSET 0.00 KHz  
 IRFIN 128250.00 Hz  
 IRRPW 50 usec  
 IRATTN 511  
 DEFILE  
 SF  
 LKSET 0.00 KHz  
 LKFIN 26934.0 Hz  
 LKLEV 200  
 LGAIN 20  
 LKPHS 349  
 LKSIG 703  
 CSPED 16 Hz  
 FILDC  
 FILDFF  
 SLVNT  
 SLVNT CDCl<sub>3</sub>  
 DATIM Tue Feb 26 00:28:45 2008



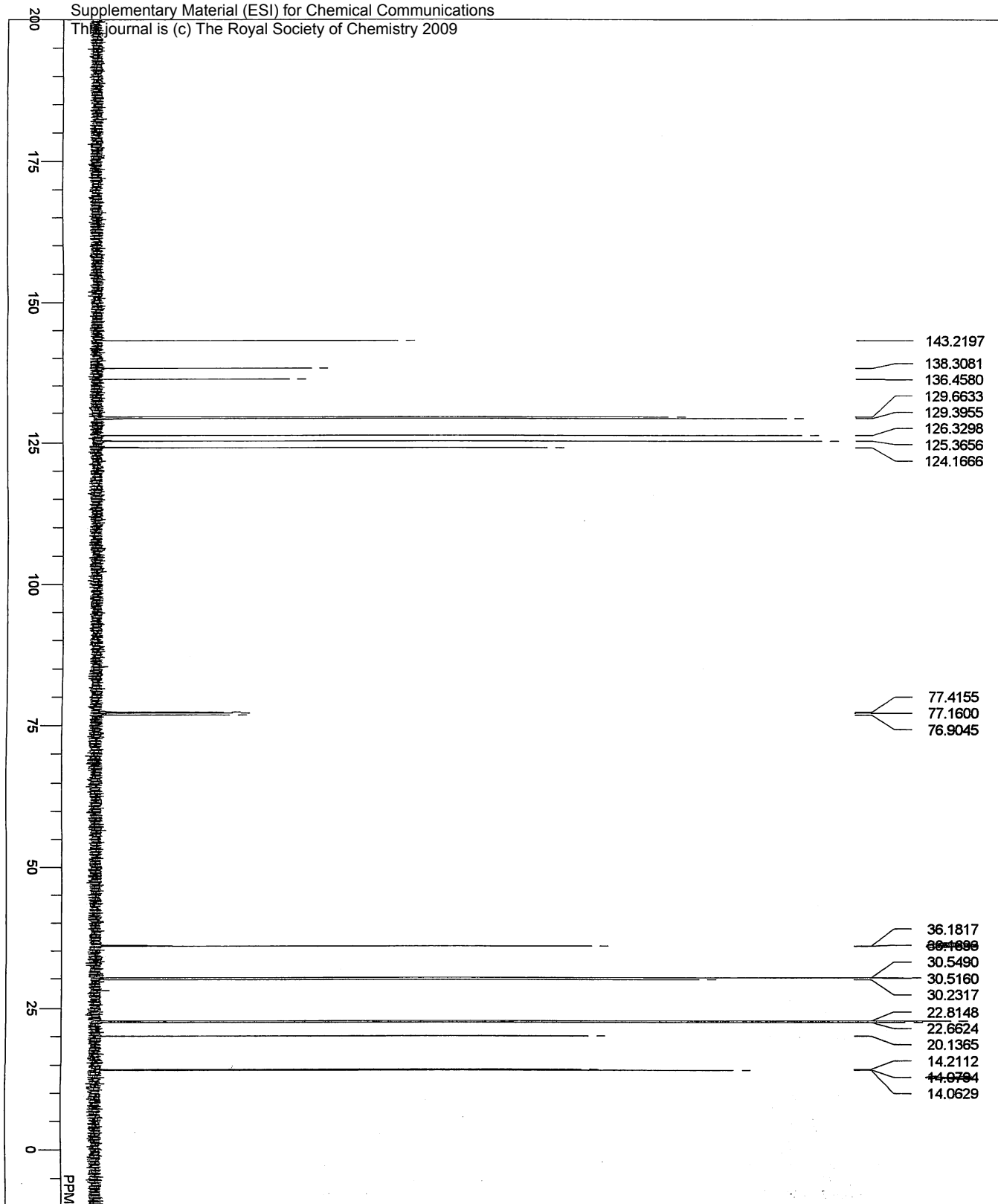


MENUC 1H  
 OBRNUC 1H  
 OBSSET 499.10 MHz  
 OBSFIN 0.00 KHz  
 OBFIN 128885.00 Hz  
 PWD1 5.50 usec  
 DEADT 72.30 usec  
 PREDL 0.01000 msec  
 IWT 1000.0000 msec  
 POINT 65536  
 SPO 65536  
 TIMES 8  
 DUMNY 0  
 FREQU 8000.00 Hz  
 FLT 4000 Hz  
 DELAY 50.00 usec  
 ACQTM 8.1920 sec  
 PD 1.0000 sec  
 ADBIT 16  
 RGAIN 15  
 BF 0.12 Hz  
 T1 0.00  
 T2 0.00  
 T3 100.00  
 T4 100.00  
 EXMOD non  
 EXPCM single pulse nondecoupling & nonpresaturation  
 IRNUC 1H  
 IFR 499.10 MHz  
 IRSET 0.00 KHz  
 IRFIN 128250.00 Hz  
 IRRPW 50 usec  
 IRATN 511  
 o-methyl.als  
 DFILE th5at  
 SF 0.00 KHz  
 LKSET 26934.0 Hz  
 LKFIN 200  
 LKLEV 20  
 LGAIN 349  
 LKPHS 700  
 CSPED 16 Hz  
 FILDG  
 FILDF  
 SLVNT  
 DATM

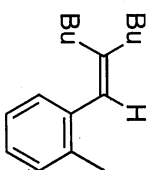
CDCl3  
 Thu Feb 28 12:00:17 2008



entry 4 of Table 2

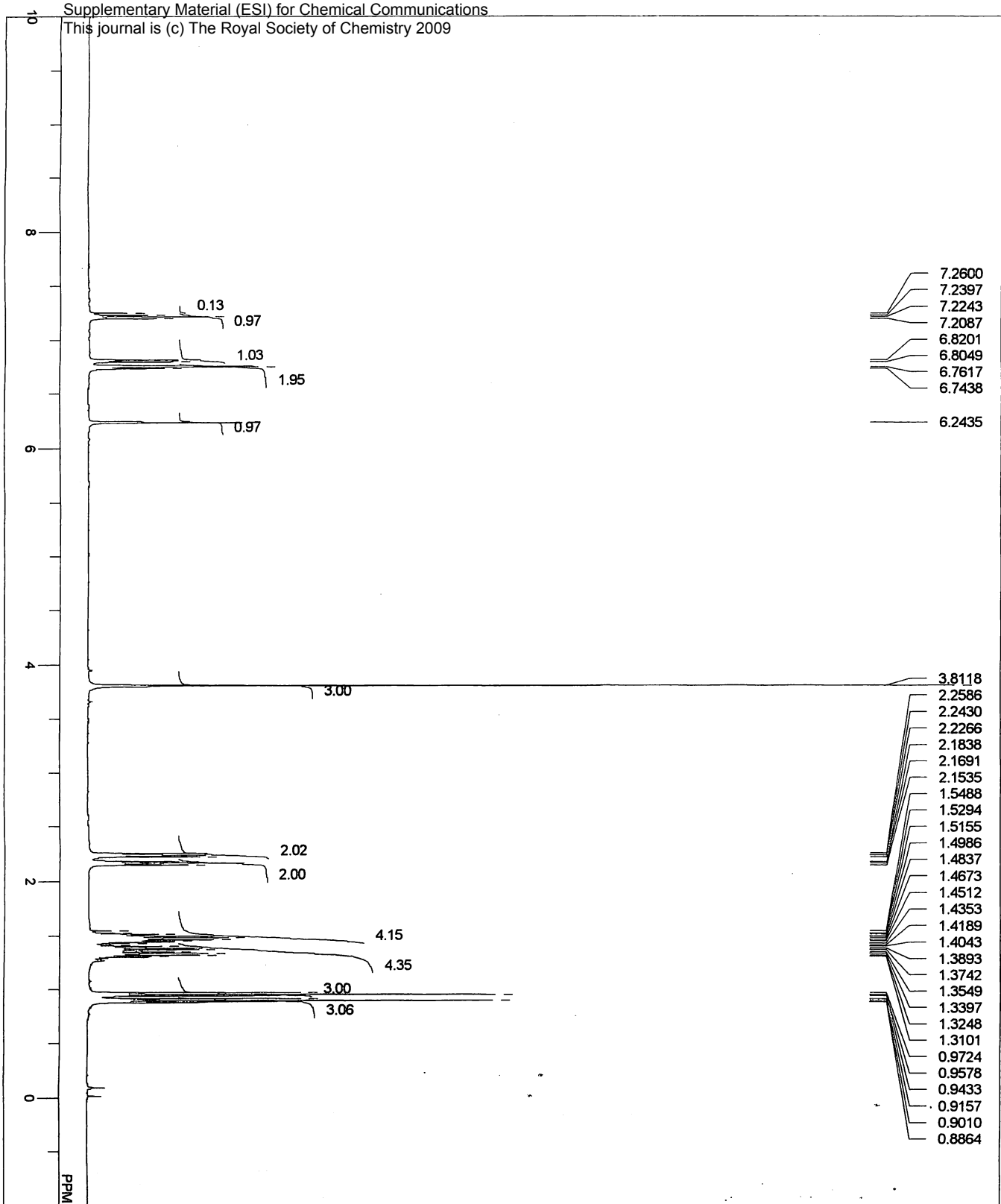


MENUF	13C
OBNUC	13C
OFR	125.40 MHz
OBSET	0.00 KHz
OBFIN	143041.00 Hz
PW1	6.25 usec
DEADT	10.00 usec
PREDL	0.01000 msec
IWT	1000.0000 msec
POINT	65536
SPO	65536
TIMES	1024
DUMNY	2
FREQU	33898.30 Hz
FLT	16950 Hz
DELAY	11.80 usec
ACQTM	1.9333 sec
PD	1.0670 sec
ADBIT	16
RGAIN	30
BF	0.12 Hz
T1	0.00
T2	0.00
T3	100.00
T4	100.00
EXMOD	bcm
EXPCM	single pulse with bilvel decoupling
IRNUC	1H
IFR	499.10 MHz
IRSET	0.00 KHz
IRFIN	128250.00 Hz
IRRPW	50 usec
IRATN	511
DFILE	_DEFAULT.ALS
SF	ticks
LKSET	0.00 KHz
LKFIN	26934.0 Hz
LKLEV	200
LGAIN	20
LKPHS	349
LKSIG	697
CSPED	16 Hz
FILDC	
FILDF	
SLVNT	CDCL3
DATIM	Thu Feb 28 12:09:05 2008

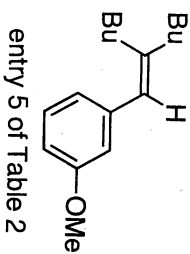


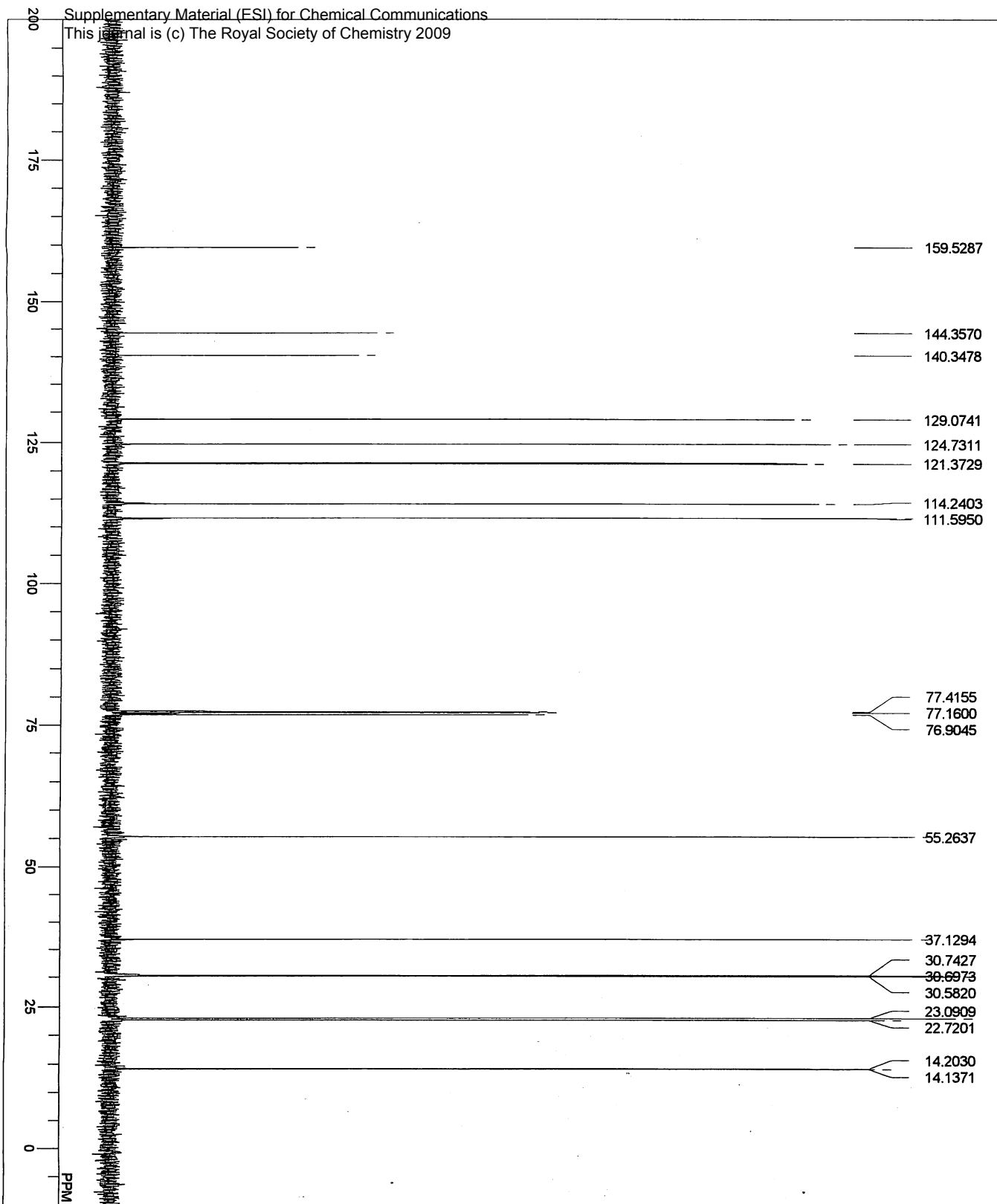
entry 4 of Table 2



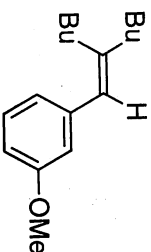


MENUF	1H
OBRUC	1H
OBSET	499.10 MHz
OBFIN	0.00 KHz
PW1	128885.00 Hz
DEADT	5.50 usec
PREDL	72.30 usec
WT	0.01000 msec
POINT	1000.0000 msec
SPO	65536
DUMMY	8
FREQU	0
FLT	8000.00 Hz
DELAY	4000 Hz
ACQTM	50.00 usec
PD	8.1920 sec
ADBIT	1.0000 sec
RGAIN	16
BF	17
T1	1.20 Hz
T2	0.00
T3	0.00
T4	90.00
EXMOD	100.00
EXPCM	non
IRNUC	single pulse nondecoupling & nonpresaturation
IFR	1H
IRSET	499.10 MHz
IRFIN	0.00 KHz
IRRPW	128250.00 Hz
IRATN	50 usec
DFILE	511
SF	m-methoxy.als
LKSET	th5at
LKFIN	0.00 KHz
LKLEV	26934.0 Hz
LGAIN	200
LKPHS	20
LKSIG	349
CSPED	695
FILDC	14 Hz
FILDF	
SLVNT	CDCl3
DATIM	Wed Feb 20 13:59:52 2008

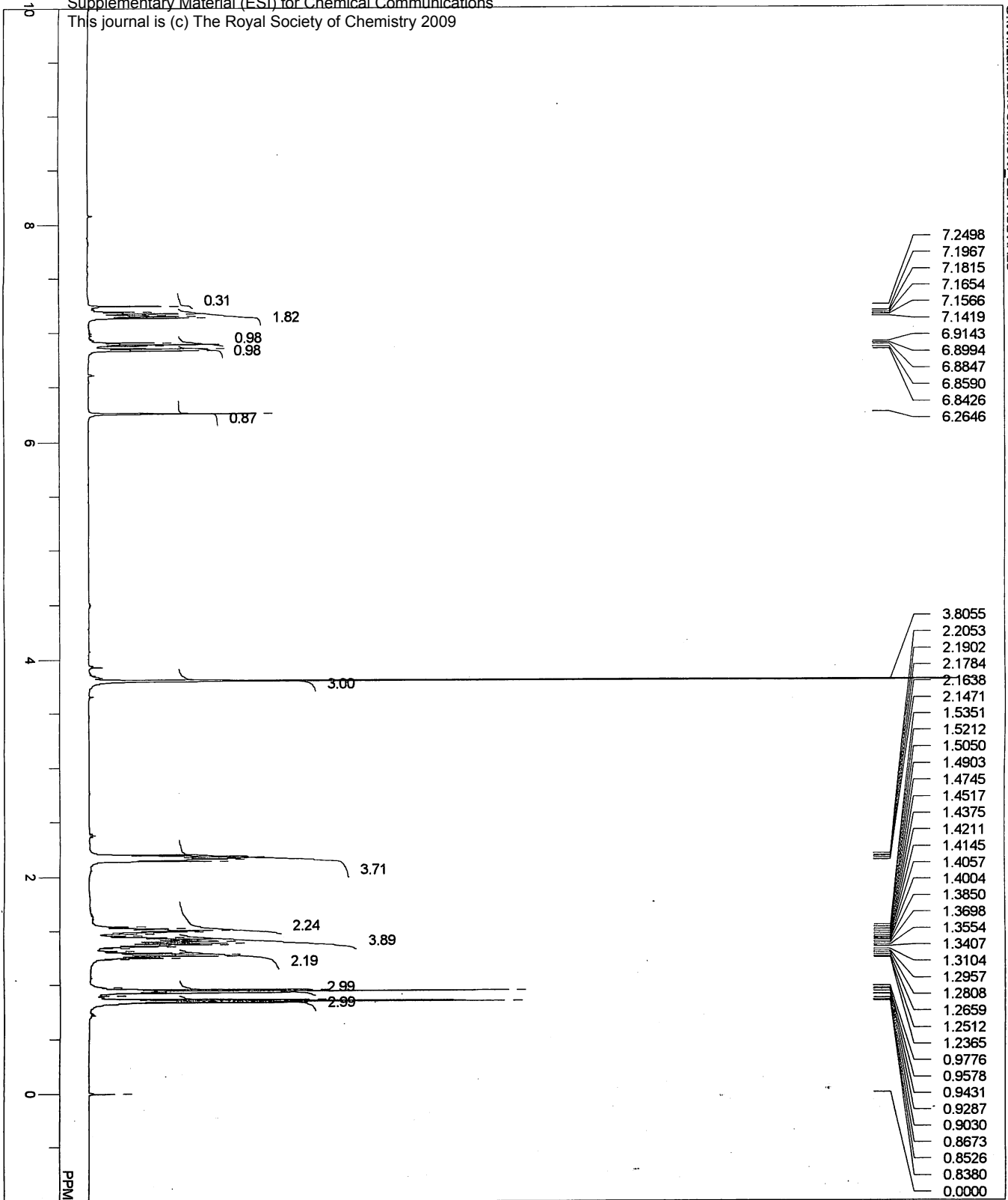




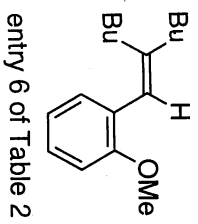
MENUF 13C  
 OBNUC 13C  
 OFR 125.40 MHz  
 OBSET 0.00 KHz  
 OBFIN 143041.00 Hz  
 PW1 6.25 usec  
 DEADT 10.00 usec  
 PREDL 0.07000 msec  
 IWT 1000.0000 msec  
 POINT 65536  
 SPO 65536  
 TIMES 1024  
 DUMINY 2  
 FREQU 33898.30 Hz  
 FLT 16950 Hz  
 DELAY 11.80 usec  
 ACQTM 1.9333 sec  
 PD 1.0670 sec  
 ADBIT 16  
 RGAIN 31  
 BF 1.20 Hz  
 T1 0.00  
 T2 0.00  
 T3 90.00  
 T4 100.00  
 EXMOD bcn  
 EXPCM single pulse with bilvel decoupling  
 IRNUC 1H  
 IFR 499.10 MHz  
 IRSET 0.00 KHz  
 IRFIN 128250.00 Hz  
 IRRPW 50 usec  
 IRATN 511  
 DFILE \_DEFAULT.ALS  
 SF thsat  
 LKSET 0.00 KHz  
 LKFIN 26934.0 Hz  
 LKLEV 200  
 LGAIN 20  
 LKPHS 349  
 LKSIG 696  
 CSPED 11 Hz  
 FILDC  
 FILDF  
 SLVNT  
 DATIM  
 CDCL3  
 Wed Feb 20 14:08:49 2008

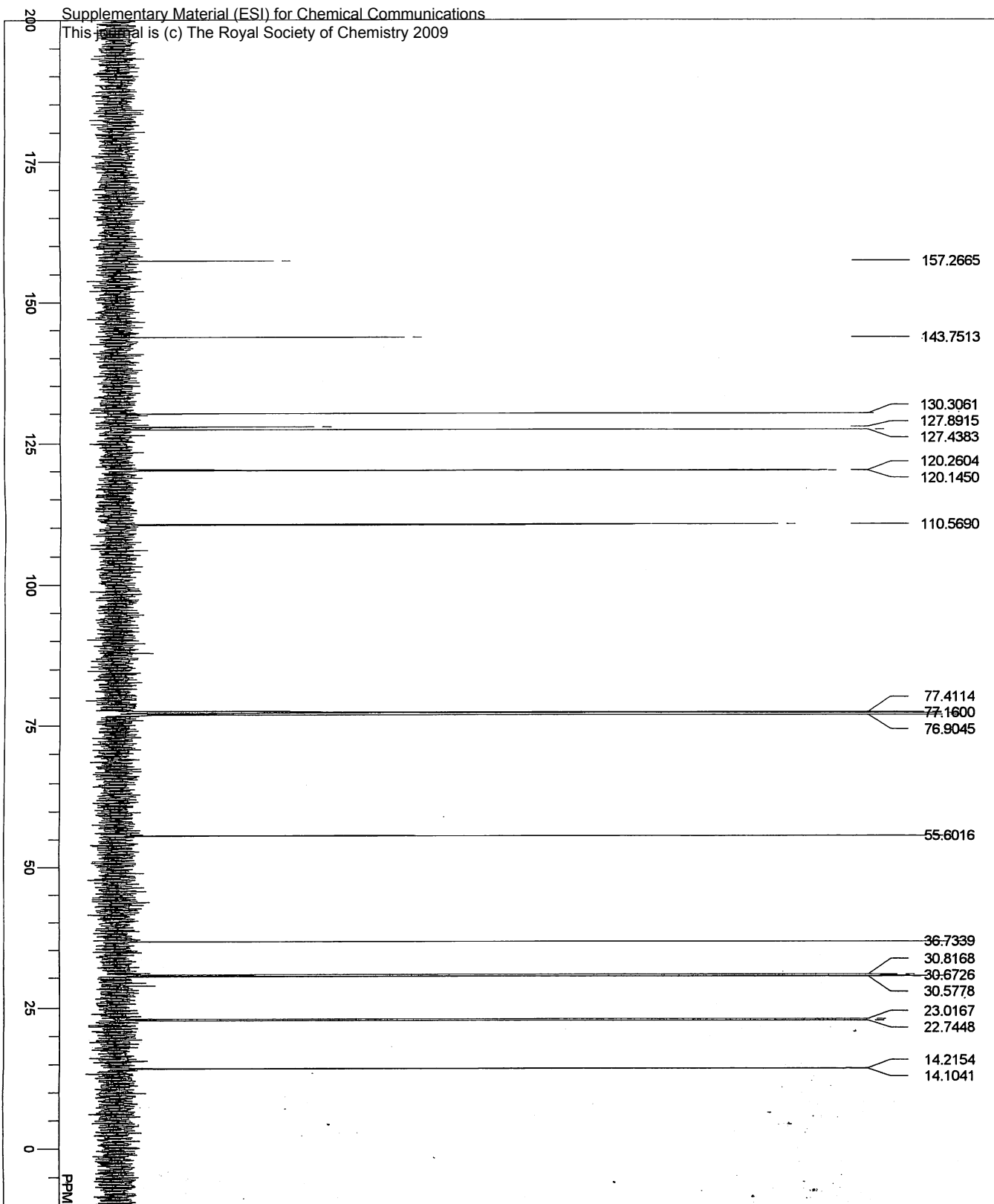


entry 5 of Table 2

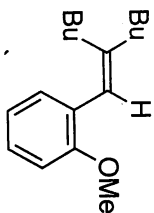


MENUF	1H
OBNUC	1H
OFFR	499.10 MHz
OBSET	0.00 KHz
OBFIN	128850.00 Hz
PW1	5.50 usec
DEADT	72.30 usec
PREDL	0.01000 msec
IWT	1000.0000 msec
POINT	65536
SPO	65536
TIMES	8
DUMNY	0
FREQU	8000.00 Hz
FLT	4000 Hz
DELAY	50.00 usec
ACQTM	8.1920 sec
PD	1.0000 sec
ADBIT	16
RGAIN	19
BF	1.20 Hz
T1	0.00
T2	0.00
T3	90.00
T4	100.00
EXMOD	non
EXPCM	single pulse nondecoupling & nonpresaturation
IRNUC	1H
IFR	499.10 MHz
IRSET	0.00 KHz
IRFIN	128250.00 Hz
IRRPW	50 usec
IRATN	511
DFILE	_DEFAULT.ALS
SF	th5at
LKSET	0.00 KHz
LKFIN	26934.0 Hz
LKLEV	200
LGAIN	20
LKPHS	349
LKSIG	697
CSPED	14 Hz
FILDC	
FILDF	
SLVNT	CDCl3
DATIM	Wed Feb 20 15:19:04 2008

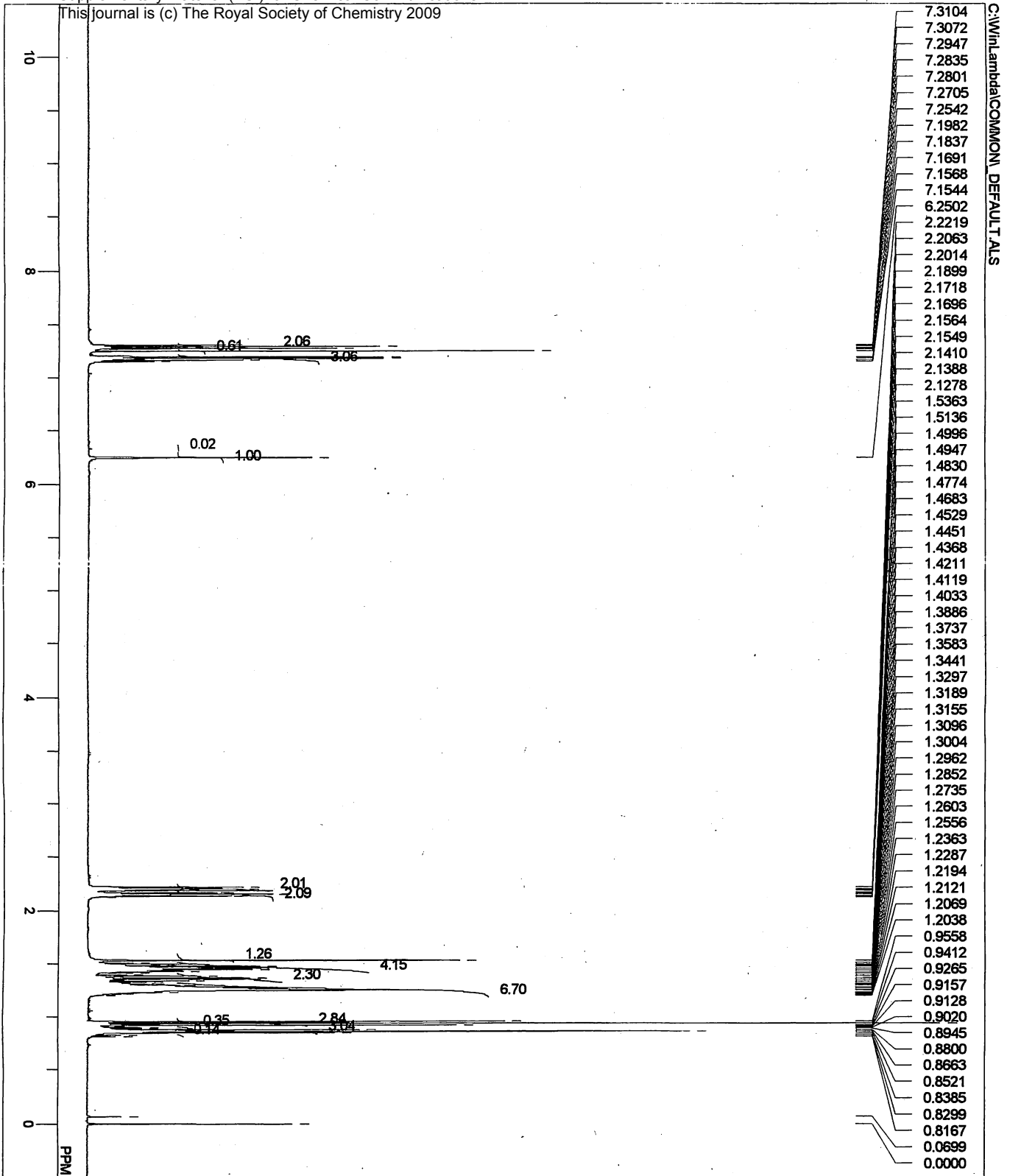




MENUF	13C
OBNUC	13C
OFFR	125.40 MHz
OBSET	0.00 KHz
OBFIN	143041.00 Hz
PW1	6.25 usec
DEADT	10.00 usec
PREDL	0.01000 msec
IMT	1000.0000 msec
POINT	65536
SPO	65536
TIMES	1024
DUMMY	2
FRECU	33898.30 Hz
FLT	16950 Hz
DELAY	11.80 usec
ACQTM	1.9333 sec
PD	1.0670 sec
ADBIT	16
RGAIN	30
BF	1.20 Hz
T1	0.00
T2	0.00
T3	90.00
T4	100.00
EXMOD	hnm
EXPCM	single pulse with bilevel decoupling
IRNUC	1H
IR	499.10 MHz
IRSET	0.00 KHz
IRFIN	128250.00 Hz
IRRPW	50 usec
IRATN	511
DFILE	_DEFAULT.ALS
SF	th5at
LKSET	0.00 KHz
LKFIN	26934.0 Hz
LKLEV	200
LGAIN	23
LKPHS	349
LKSIG	1407
CSPED	14 Hz
FILDF	
SLVNT	CDCl3
DATIM	Wed Feb 20 14:24:25 2008

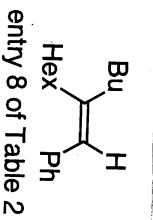


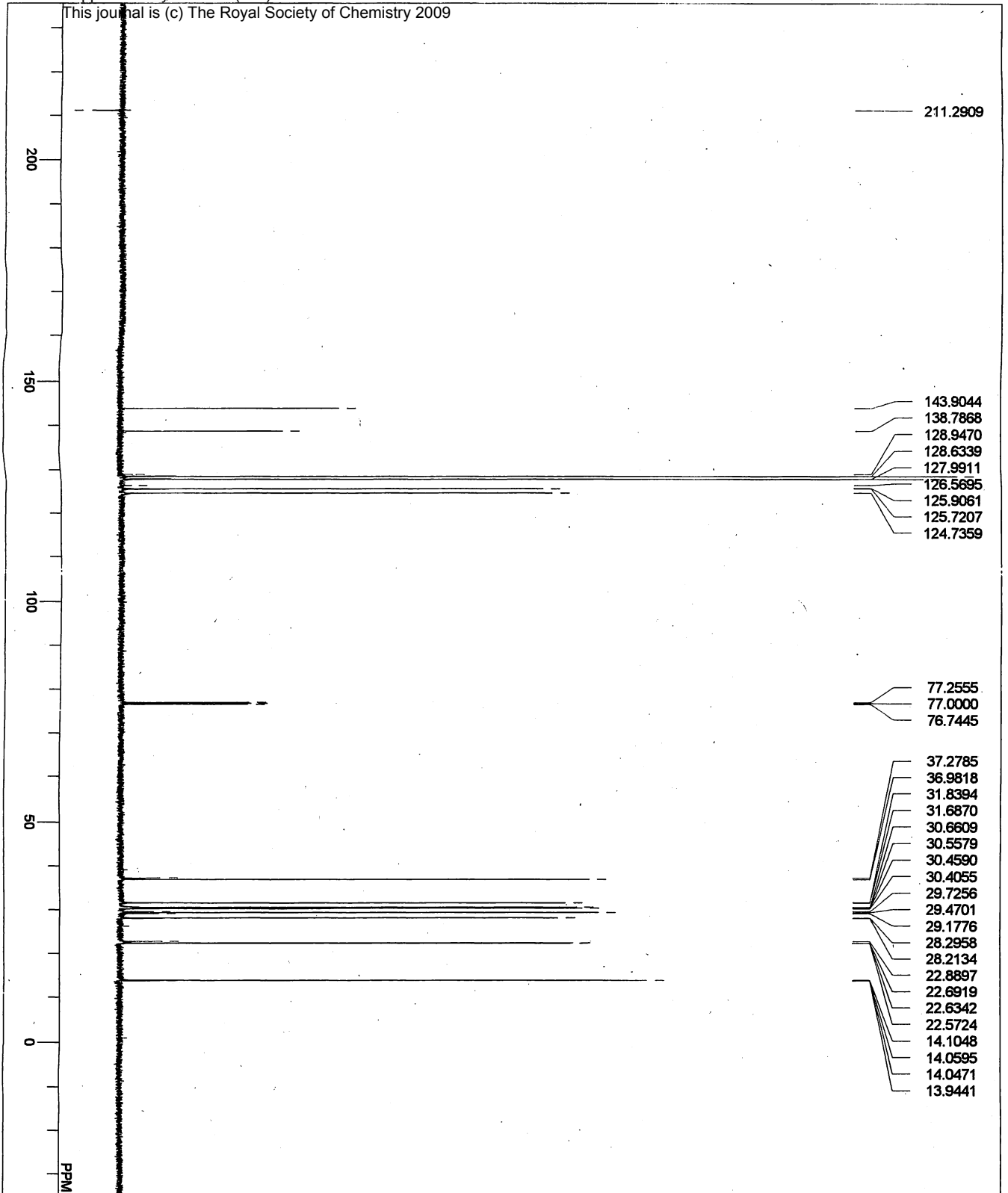
entry 6 of Table 2



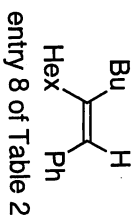
C:\WIn\lambda\data\COMMON\_DEFAULT.ALS

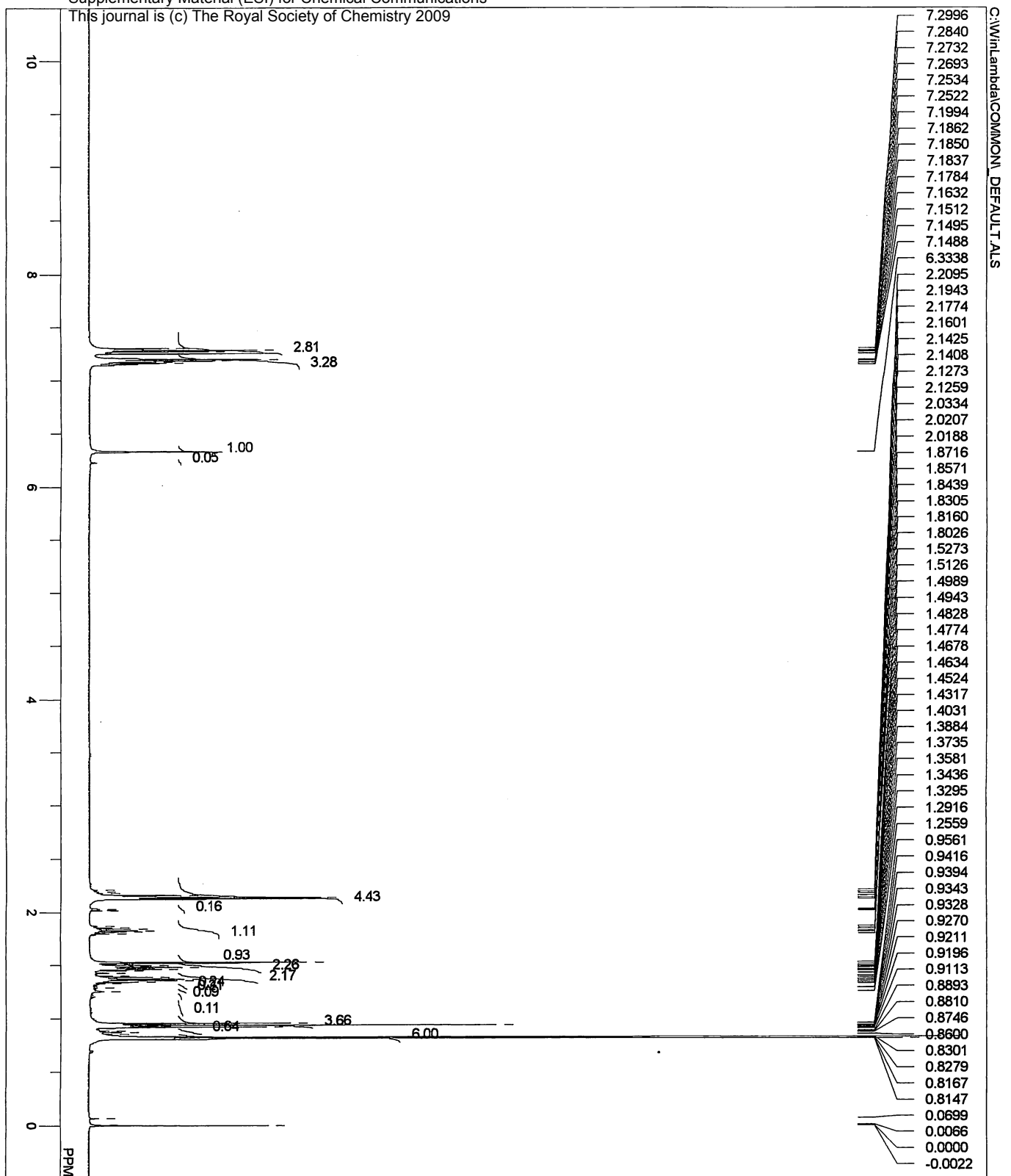
MENU	1H
OBNUC	1H
OFR	499.10 MHz
OBSET	0.00 KHz
OBFIN	128885.00 Hz
PW1	5.50 usec
DEADT	72.30 usec
PREDL	0.01000 msec
IWT	1000.0000 msec
POINT	65536
SPO	65536
TIMES	16
DUMMY	0
FREQU	8000.00 Hz
FLT	4000 Hz
DELAY	50.00 usec
ACQTM	8.1920 sec
PD	1.0000 sec
ADBIT	16
RGAIN	22
BF	0.12 Hz
T1	0.00
T2	0.00
T3	90.00
T4	100.00
EXMOD	non
EXPCM	single pulse nondecoupling & nonpressaturation
IRNUC	1H
IFR	499.10 MHz
IRSET	0.00 KHz
IRFIN	128250.00 Hz
IRRPW	50 usec
IRATN	511
DFILE	_DEFAULT.ALS
SF	thisat
LKSET	0.00 KHz
LKFIN	26934.0 Hz
LKLEV	200
LGAIN	20
LKPHS	353
LKSIG	573
CSPED	13 Hz
FILDG	
SLVNT	CDCl3
DATIM	Fri Nov 14 00:02:58 2008





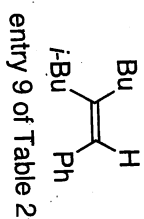
MNUF 13C  
 OBNUC 13C  
 OFR 125.40 MHz  
 OBSET 0.00 KHz  
 OBFIN 143041.00 Hz  
 PW1 6.25 usec  
 DEADT 10.00 usec  
 PREDL 0.010000 msec  
 IWT 1000.0000 msec  
 POINT 65536  
 SPO 65536  
 TIMES 128  
 DUMNY 2  
 FREQU 33898.30 Hz  
 FLT 16950 Hz  
 DELAY 11.80 usec  
 ACQTM 1.9333 sec  
 PD 1.0670 sec  
 ADBIT 16  
 RGAIN 29  
 BF 1.20 Hz  
 T1 0.00  
 T2 0.00  
 T3 90.00  
 T4 100.00  
 EXMOD bnm  
 EXPCM single pulse with bilevel decoupling  
 IRNUC 1H  
 IFR 499.10 MHz  
 IRSET 0.00 KHz  
 IRFIN 128250.00 Hz  
 IRRPW 50 usec  
 IRATN 511  
 DFILE \_DEFAULT.ALS  
 SF thsat  
 LKSET 0.00 KHz  
 LKTIN 26934.0 Hz  
 LKLEV 200  
 LGAIN 19  
 LKPHS 353  
 LKSIG 582  
 CSPED 14 Hz  
 FLDC  
 FLDF  
 SLVNT  
 DATIM  
 CDCL3  
 Fft Nov 14 13:17:15 2008

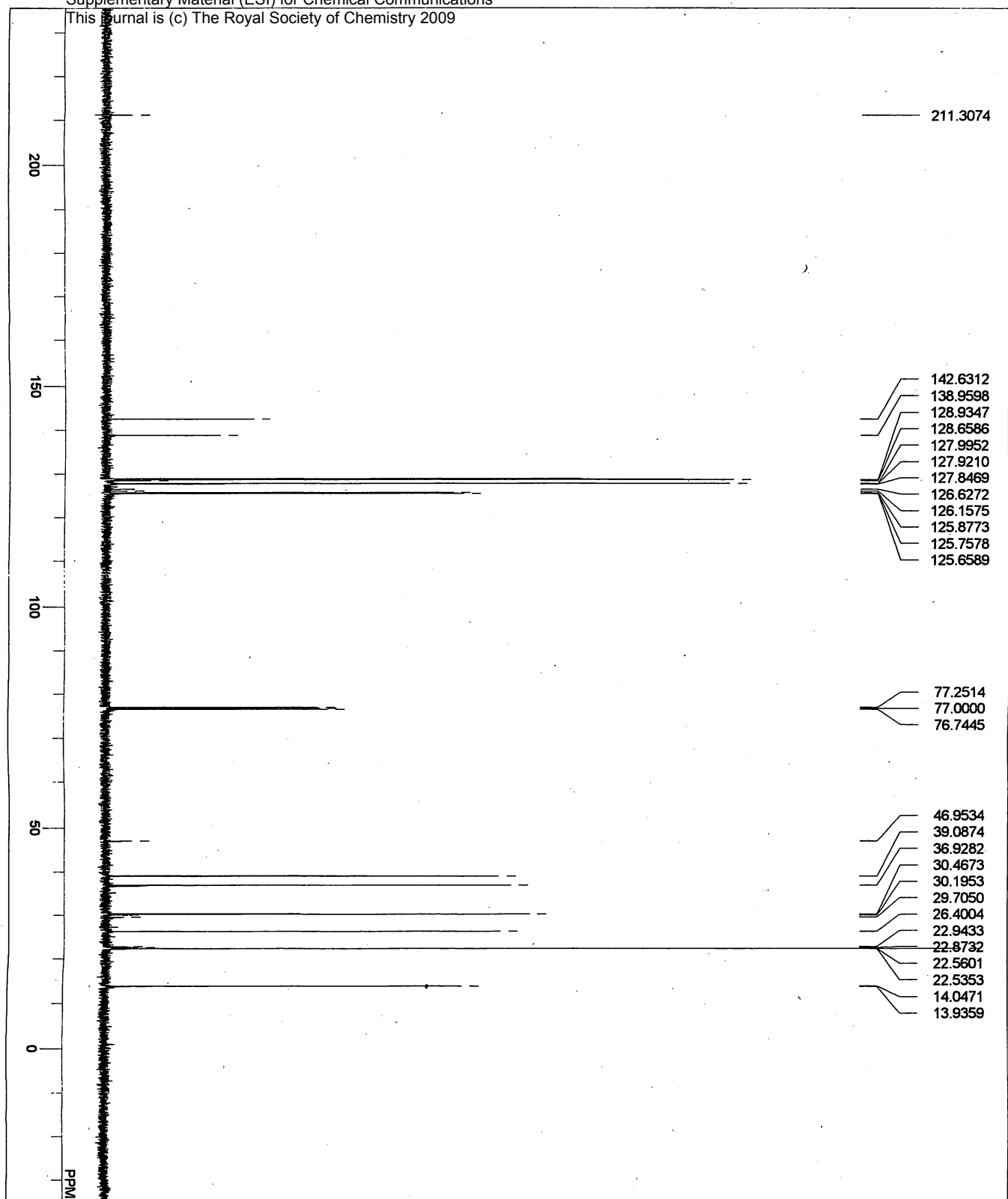




MENUF 1H  
 OBRNUC 1H  
 OFR 499.10 MHz  
 OBSSET 0.00 KHz  
 OBFIN 128885.00 Hz  
 PW1 5.50 usec  
 DEADT 72.30 usec  
 PREDL 0.07000 msec  
 IWT 1000.0000 msec  
 POINT 65536  
 SPO 65536  
 TIMES 16  
 DUMINY 0  
 FREQU 8000.00 Hz  
 FLT 4000 Hz  
 DELAY 50.00 usec  
 ACQTM 8.1920 sec  
 PD 1.0000 sec  
 ADBIT 16  
 RGAIN 22  
 BF 0.12 Hz  
 T1 0.00  
 T2 0.00  
 T3 90.00  
 T4 100.00  
 EXMOD non  
 EXPCM single pulse nondecoupling & nonpresaturator  
 IRNUC 1H  
 IFR 499.10 MHz  
 IRSET 0.00 KHz  
 IRFIN 128250.00 Hz  
 IRRPW 50 usec  
 IRATN 511  
 DFILE \_DEFAULT.ALS  
 SF thisat  
 LKSET 0.00 KHz  
 LKFIN 26934.0 Hz  
 LKLEV 200  
 LGAIN 21  
 LKPHS 353  
 LKSIG 643  
 CSPED 10 Hz  
 FILDG  
 FILDF  
 SLVNT  
 DATM

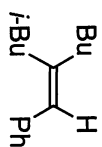
CDCl3  
 Sat May 17 18:58:31 2008





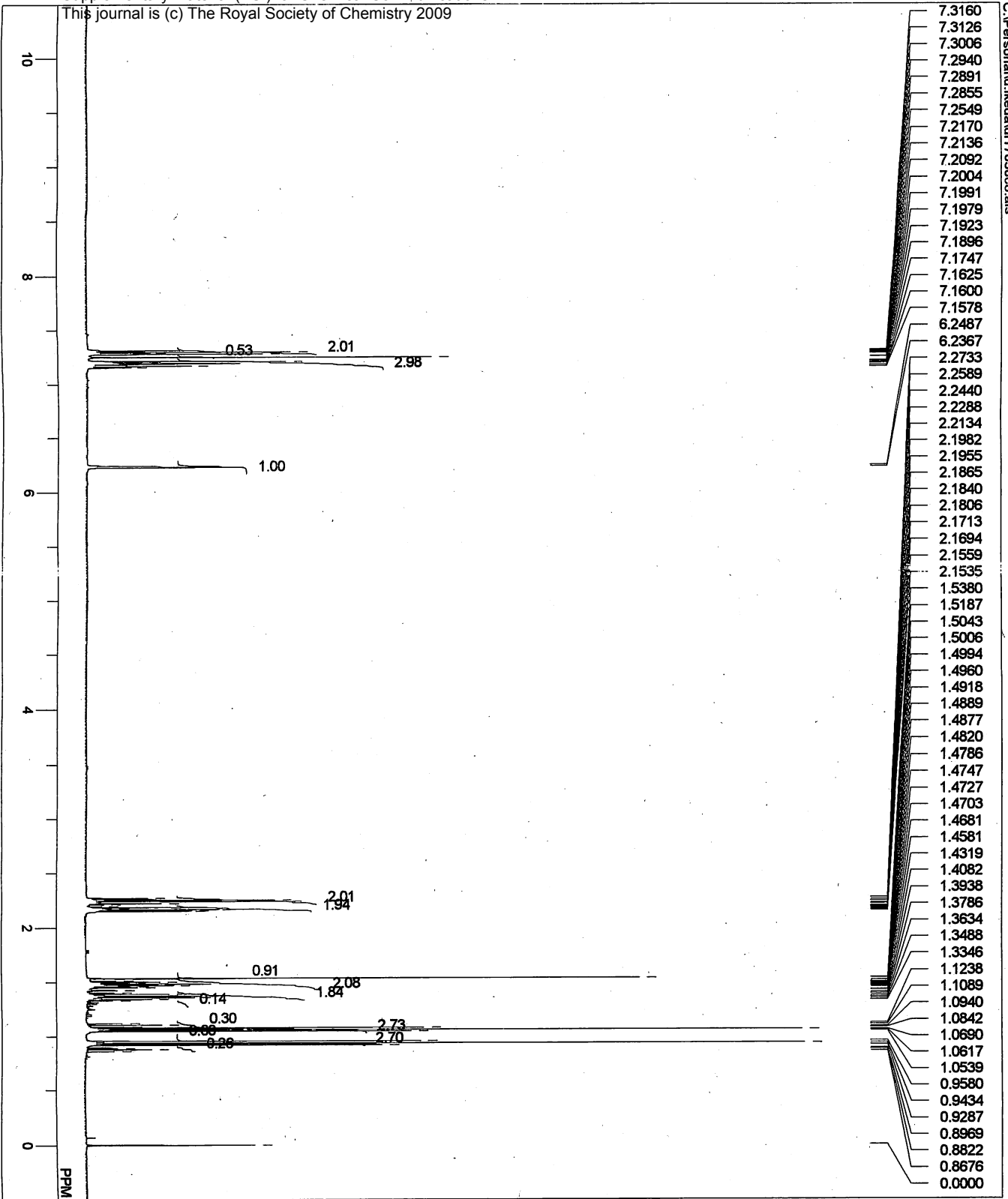
MENUF 13C  
 OBNUC 13C  
 OFR 125.40 MHz  
 OBSET 0.00 KHz  
 OBFIN 143041.00 Hz  
 PW1 6.25 usec  
 DEADT 10.00 usec  
 PREDL 0.01000 msec  
 IWT 1000.0000 msec  
 POINT 65536  
 SPO 65536  
 TIMES 128  
 DUMMY 2  
 FREQU 33896.30 Hz  
 FLT 16950 Hz  
 DELAY 11.80 usec  
 ACQTM 1.9333 sec  
 PD 1.0670 sec  
 ADBIT 16  
 RGAIN 31  
 BF 1.20 Hz  
 T1 0.00  
 T2 0.00  
 T3 90.00  
 T4 100.00  
 EXMOD bnm  
 EXPCM single pulse with bilvel decoupling  
 IRNUC 1H  
 IFR 499.10 MHz  
 IRSET 0.00 KHz  
 IRFIN 128250.00 Hz  
 IRRPW 50 usec  
 IRATN 511  
 DFILE d:\4019co\13C.a1s  
 SF thsat  
 LKSET 0.00 KHz  
 LKFIN 26934.0 Hz  
 LKLEV 200  
 LGAIN 19  
 LKPHS 353  
 LKSIG 671  
 CSPED 12 Hz

CDCl3  
 F1 Nov 14 13:09:11 2008

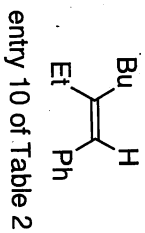


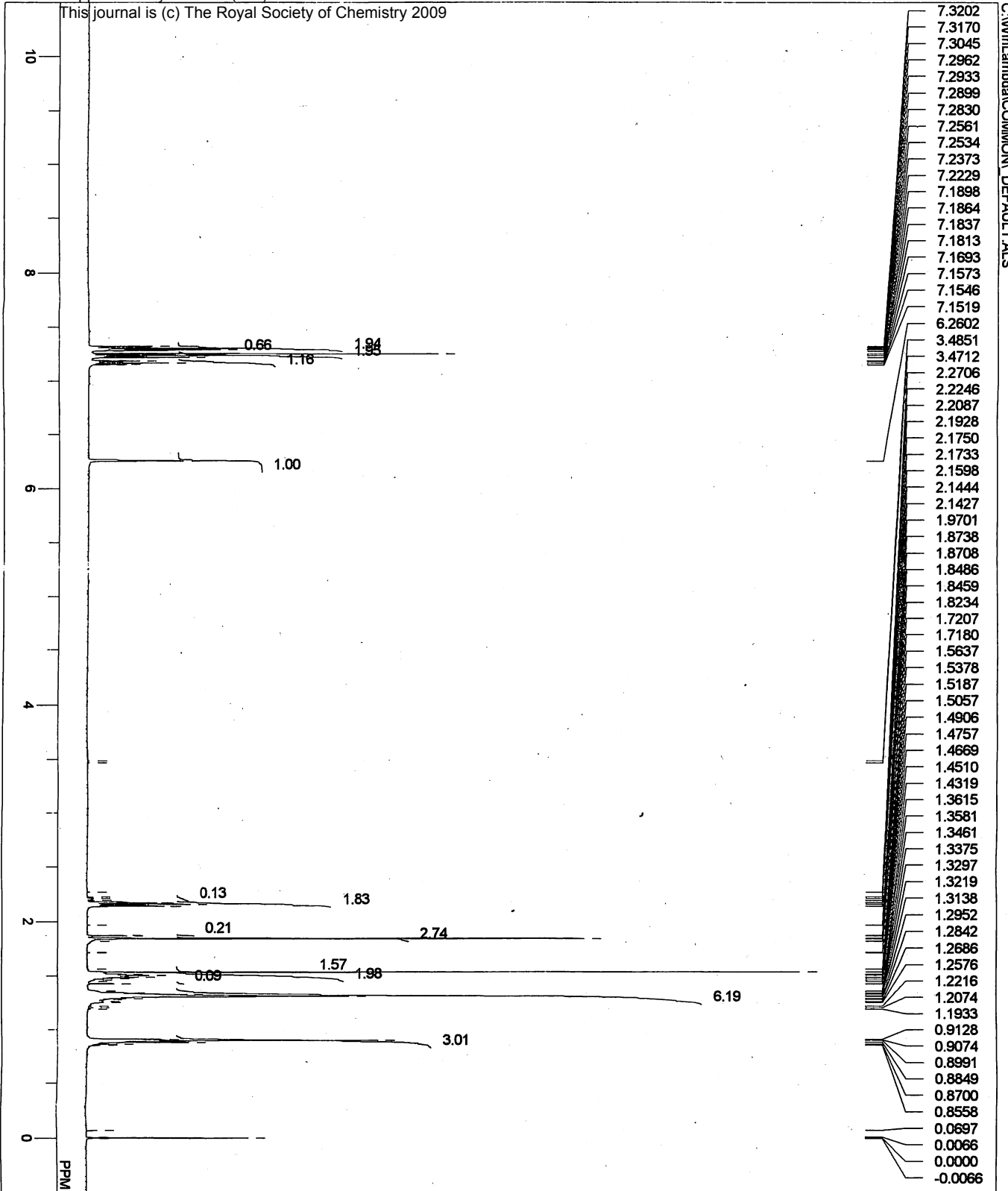


C:\Personal\ldiked\dl17030co.als

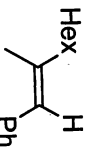


MENUF	1H	
OBNUC	1H	
OFR	499.10 MHz	
OBSET	0.00 KHz	
OBFIN	128885.00 Hz	
PW1	5.50 usec	
DEADT	72.30 usec	
PREDL	0.01000 msec	
IWT	1000.0000 msec	
POINT	65536	
SPO	65536	
DUMMY	16	
FREQU	8000.00 Hz	
FLT	4000 Hz	
DELAY	50.00 usec	
ACQTM	8.1920 sec	
PD	1.0000 sec	
ADBIT	16	
RGAIN	22	
BF	0.12 Hz	
T1	0.00	
T2	0.00	
T3	90.00	
T4	100.00	
EXMOD	non	
EXPM	single pulse nondecoupling & nonpresaturation	
IRNUC	1H	
IFR	499.10 MHz	
IRSET	0.00 KHz	
IRFIN	128250.00 Hz	
IRPW	50 usec	
IRATN	511	
DFILE	dl17030co.als	
SF	th5at	
LKSET	0.00 KHz	
LKFIN	26934.0 Hz	
LKLEV	200	
LGAIN	19	
LKPHS	353	
LKSG	650	
CSPED	12 Hz	
FILDC		
FILDF		
SILVNT		
DATIM		
CDCL3		
	Thu Nov 27 10:31:59 2008	

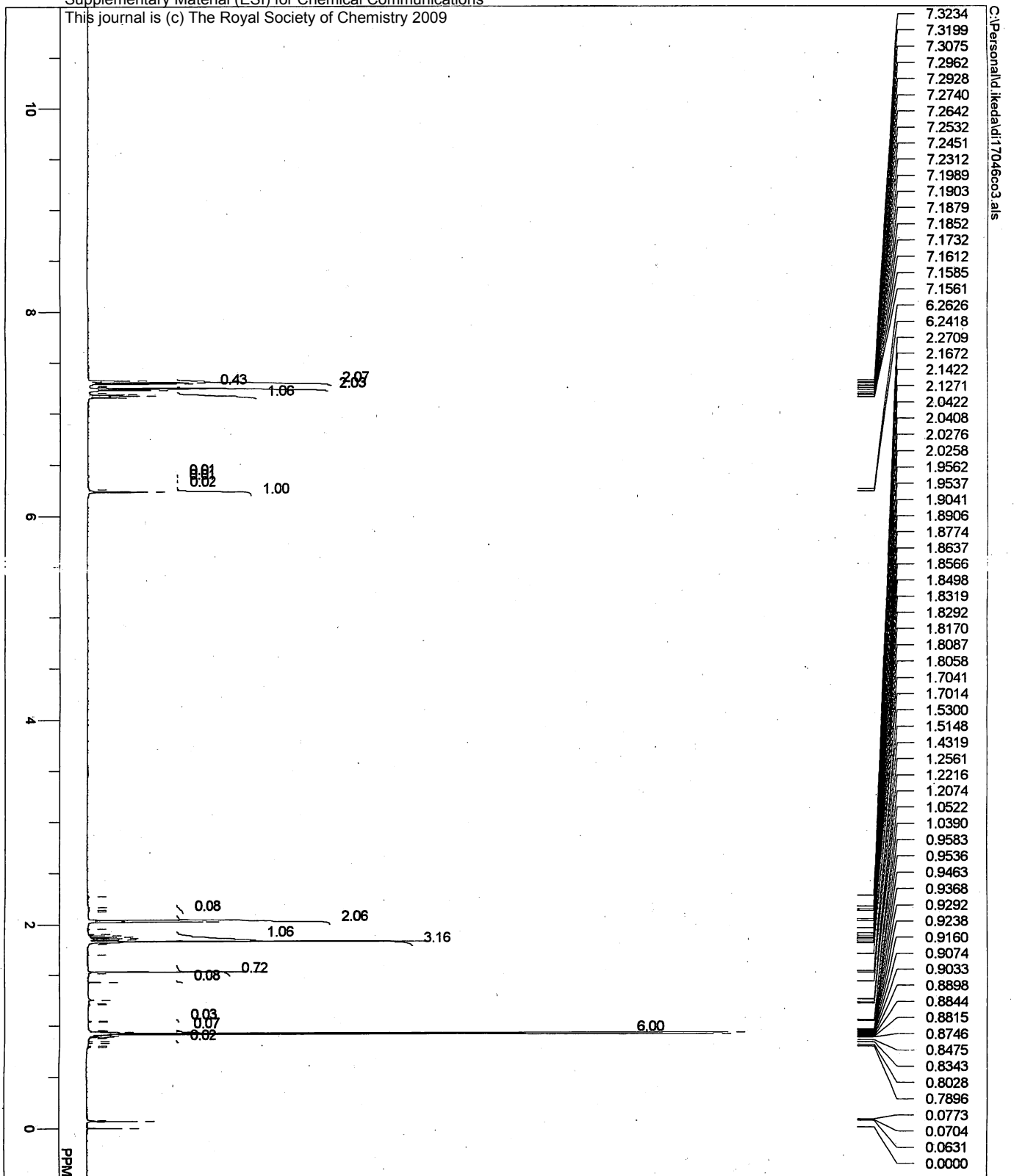




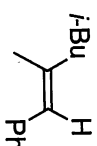
MENU	1H	1H
OBNUC	499.10 MHz	
OFR	0.00 KHz	
OBSET	128885.00 Hz	
OBFIN	5.50 usec	
PW1	72.30 usec	
DEADT	0.010000 msec	
PREDL	1000.00000 msec	
MT	65536	
POINT	65536	
SPO	16	
TIMES	0	
DUMNY	8000.00 Hz	
FREQU	4000 Hz	
FLT	50.00 usec	
DELAY	8.1920 sec	
ACQTM	1.0000 sec	
PD	16	
ADBIT	23	
RGAIN	0.12 Hz	
BF	0.00	
T1	0.00	
T2	90.00	
T3	100.00	
T4		
EXMOD	non	
EXPCM	single pulse nondecoupling & nonpresaturation	
IRNUC	1H	
FR	499.10 MHz	
IRSET	0.00 KHz	
IRFIN	128250.00 Hz	
IRRPW	50 usec	
IRATN	511	
DFILE	_DEFAULTS	
SF	thsat	
LKSET	0.00 KHz	
LKFIN	26934.0 Hz	
LKLEV	200	
LGAIN	20	
LKPHS	353	
LKSIG	679	
CSPED	12 Hz	
FLDC		
FLDF		
SLVNT	CDCl3	
DATIM	Fri Nov 14 23:30:18 2008	



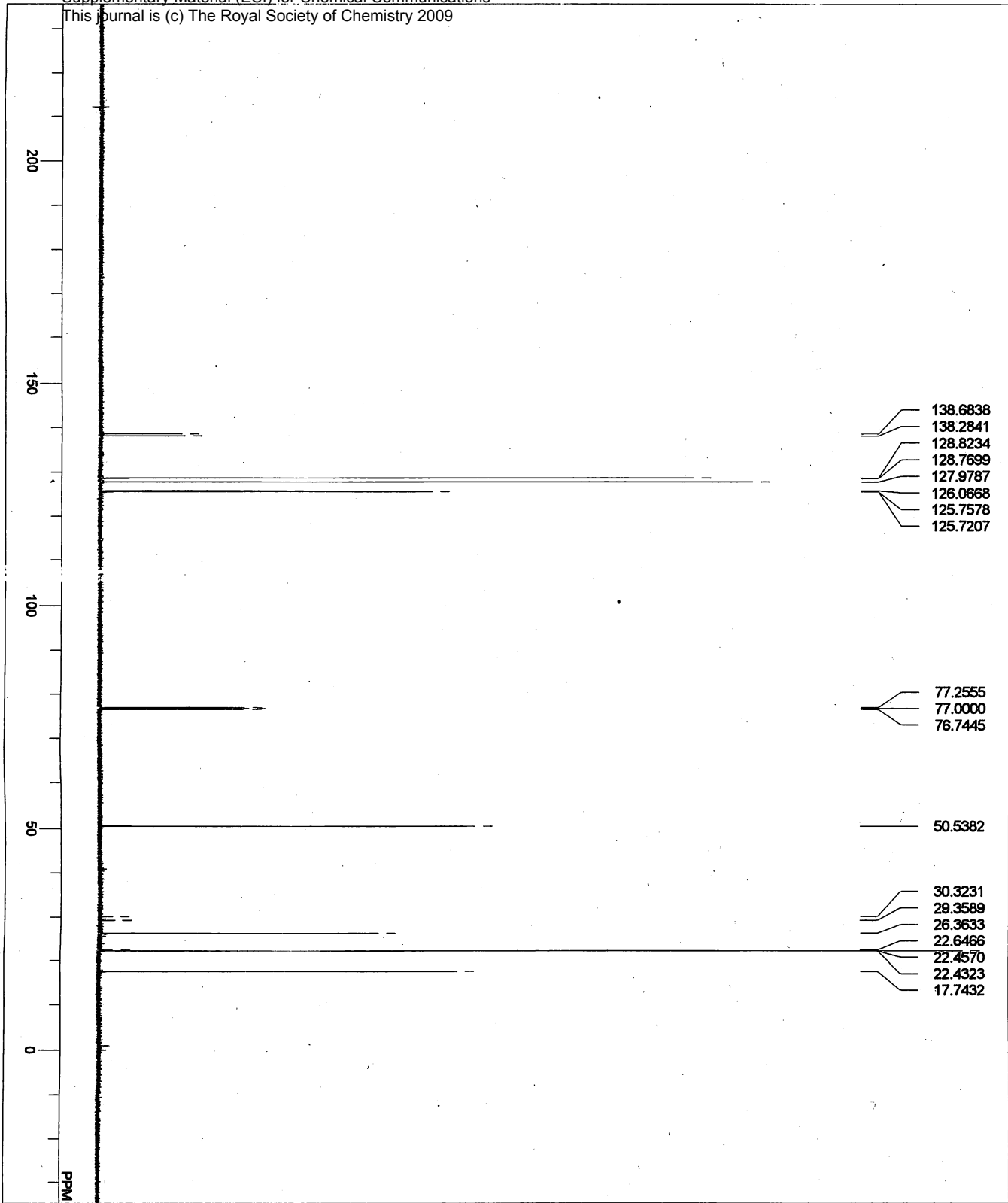
entry 11 of Table 2



MENUP 1H  
 OBNUC 1H  
 OFR 499.10 MHz  
 OBSSET 0.00 KHz  
 OBFIN 129885.00 Hz  
 PWT 5.50 usec  
 DEADT 72.30 usec  
 PREDL 0.010000 msec  
 IWT 1000.0000 msec  
 POINT 65536  
 SPO 65536  
 TIMES 16  
 DUMNY 0  
 FREQU 8000.00 Hz  
 FLT 4000 Hz  
 DELAY 50.00 usec  
 ACQTM 8.1920 sec  
 PD 1.0000 sec  
 ADBI 16  
 RGAIN 22  
 BF 0.12 Hz  
 T1 0.00  
 T2 0.00  
 T3 90.00  
 T4 100.00  
 EXMOD non  
 EXPCM single pulse nondecoupling & nonpresaturation  
 IRNUC 1H  
 IFR 499.10 MHz  
 IRSET 0.00 KHz  
 IRFIN 128250.00 Hz  
 IRRPW 50 usec  
 IRATN 511  
 DFILE d:\17046c03.als  
 SF thsat  
 LKSET 0.00 KHz  
 LKFIN 26934.0 Hz  
 LKLEV 200  
 LGAIN 24  
 LKPHS 353  
 LKSIG 731  
 CSPED 11 Hz  
 FLDC  
 FLDF  
 SLVNT  
 DATIM  
 CDCl3  
 Tue Dec 02 15:05:58 2008

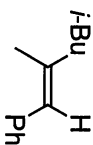


entry 12 of Table 2

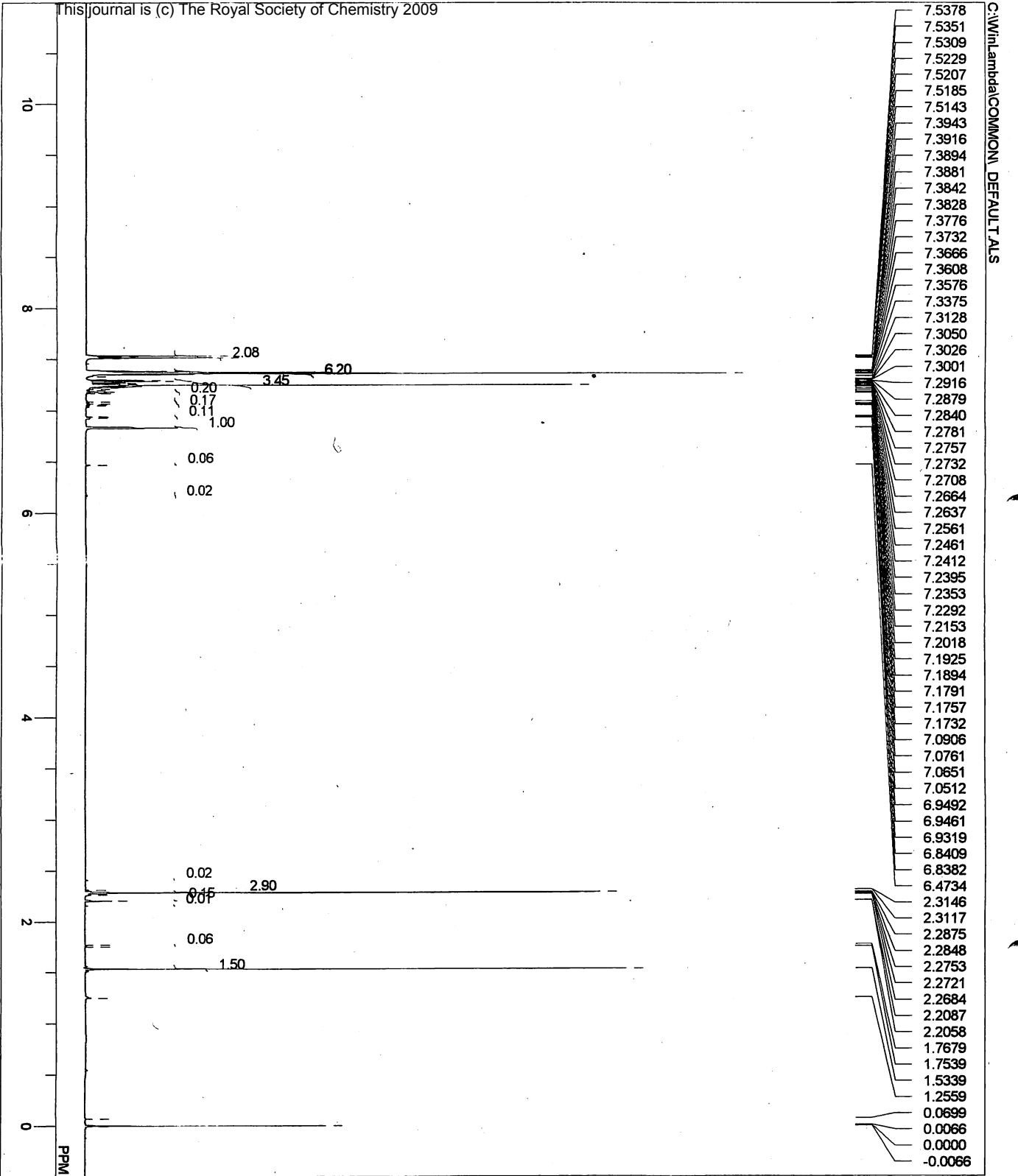


MENUF 13C  
 ONBUC 13C  
 OFR 125.40 MHz  
 OBSET 0.00 KHz  
 OBFIN 143041.00 Hz  
 PWM1 6.25 usec  
 DEADT 10.00 usec  
 PREDL 0.01000 msec  
 WLT 1000.0000 msec  
 POINT 65536  
 SPO 65536  
 TIMES 1024  
 DUMINY 2  
 FREQU 33898.30 Hz  
 FLT 16950 Hz  
 DELAY 11.80 usec  
 ACQTM 1.9333 sec  
 PD 1.0670 sec  
 ADBIT 16  
 RGAIN 30  
 BF 0.12 Hz  
 T1 0.00  
 T2 0.00  
 T3 90.00  
 T4 100.00  
 EXMOD bnm  
 EXPCM single pulse with bilvel decoupling  
 IRNUC 1H  
 IFR 499.10 MHz  
 IRSET 0.00 KHz  
 IRFIN 128250.00 Hz  
 IRRPW 50 usec  
 IRATN 511  
 DFILE \_DEFAULT.ALS  
 SF thsat  
 LKSET 0.00 KHz  
 LKFIN 26934.0 Hz  
 LKLEV 200  
 LGAIN 22  
 LKPHS 353  
 LKSIG 1130  
 CSPED 11 Hz  
 FILDC  
 FILDF  
 SILVNT  
 DATIM

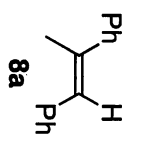
CDCL3  
 Thu Dec 11 00:57:16 2008



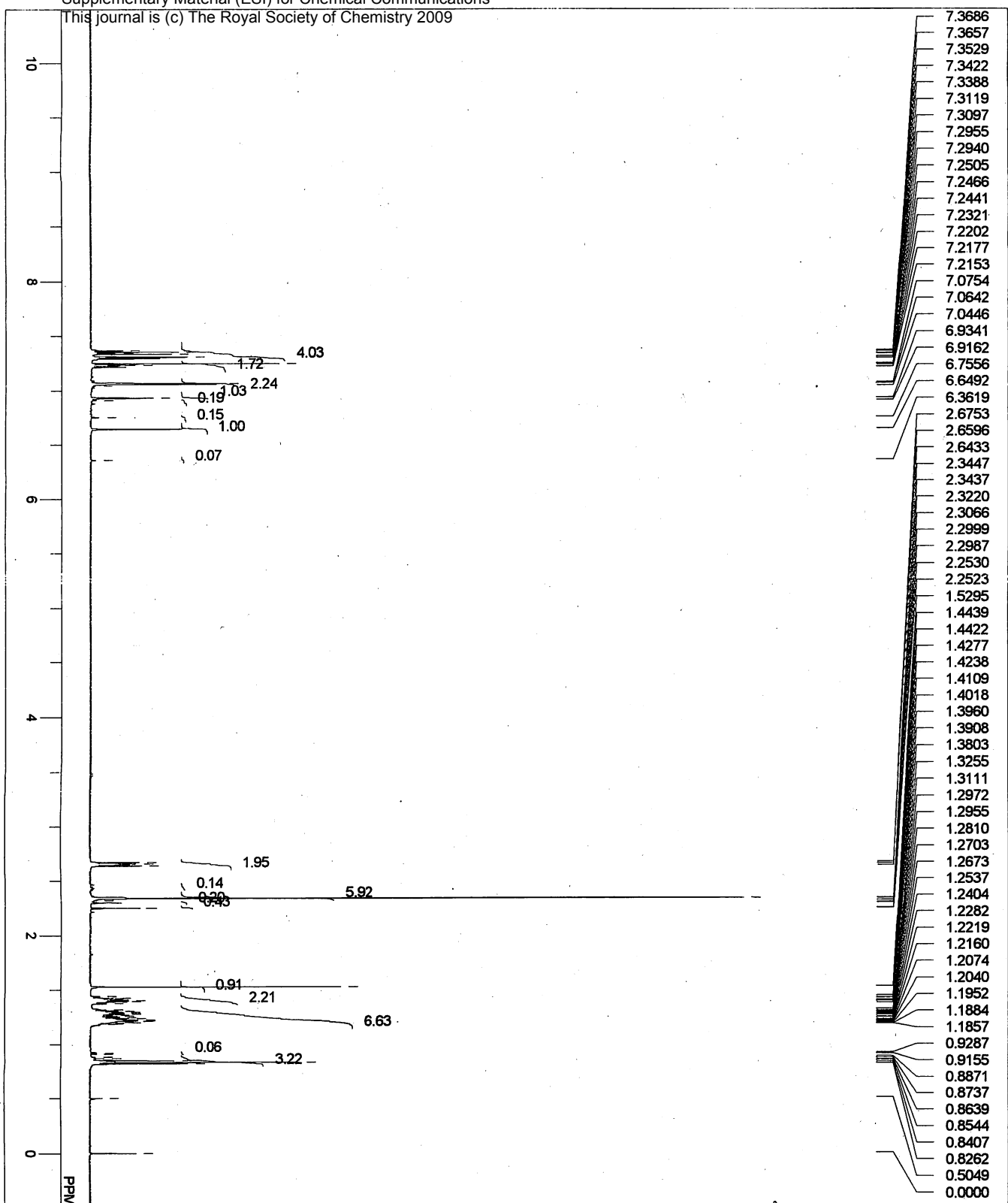
entry 12 of Table 2



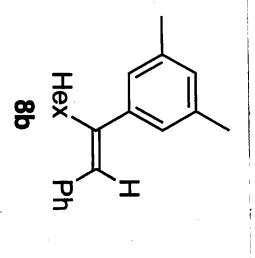
MENU  
 OFF 1H  
 OBSET 499.10 MHz  
 OBFIN 0.00 KHz  
 PW1 128885.00 Hz  
 5.50 usec  
 DEADT 72.30 usec  
 PREDL 0.01000 msec  
 IWT 1000.0000 msec  
 POINT 65536  
 SPO 65536  
 TIMES 16  
 DUMMY 0  
 FREQ 8000.00 Hz  
 FLT 4000 Hz  
 DELAY 50.00 usec  
 ACQTM 8.1920 sec  
 PD 1.0000 sec  
 ADBIT 16  
 RGAIN 26  
 BF 0.12 Hz  
 T1 0.00  
 T2 0.00  
 T3 90.00  
 T4 100.00  
 EXMOD non  
 single pulse nondecoupling & nonpresaturation  
 1H  
 IRRNUC 499.10 MHz  
 IRRSET 0.00 KHz  
 IRRFIN 128250.00 Hz  
 IRRPV 50 usec  
 IRATN 511  
 DFILE  
 \_DEFAULTS  
 tftbat  
 SF 0.00 KHz  
 LKSET 26934.0 Hz  
 LKFIN 200  
 LKLEV 19  
 LGAIN 353  
 LKPHS 1156  
 LKSIG 11 Hz  
 CSPED  
 FILDC  
 FILDF  
 SLVNT CDCL3  
 DATM Tue-Jan 06 14:48:53 2009

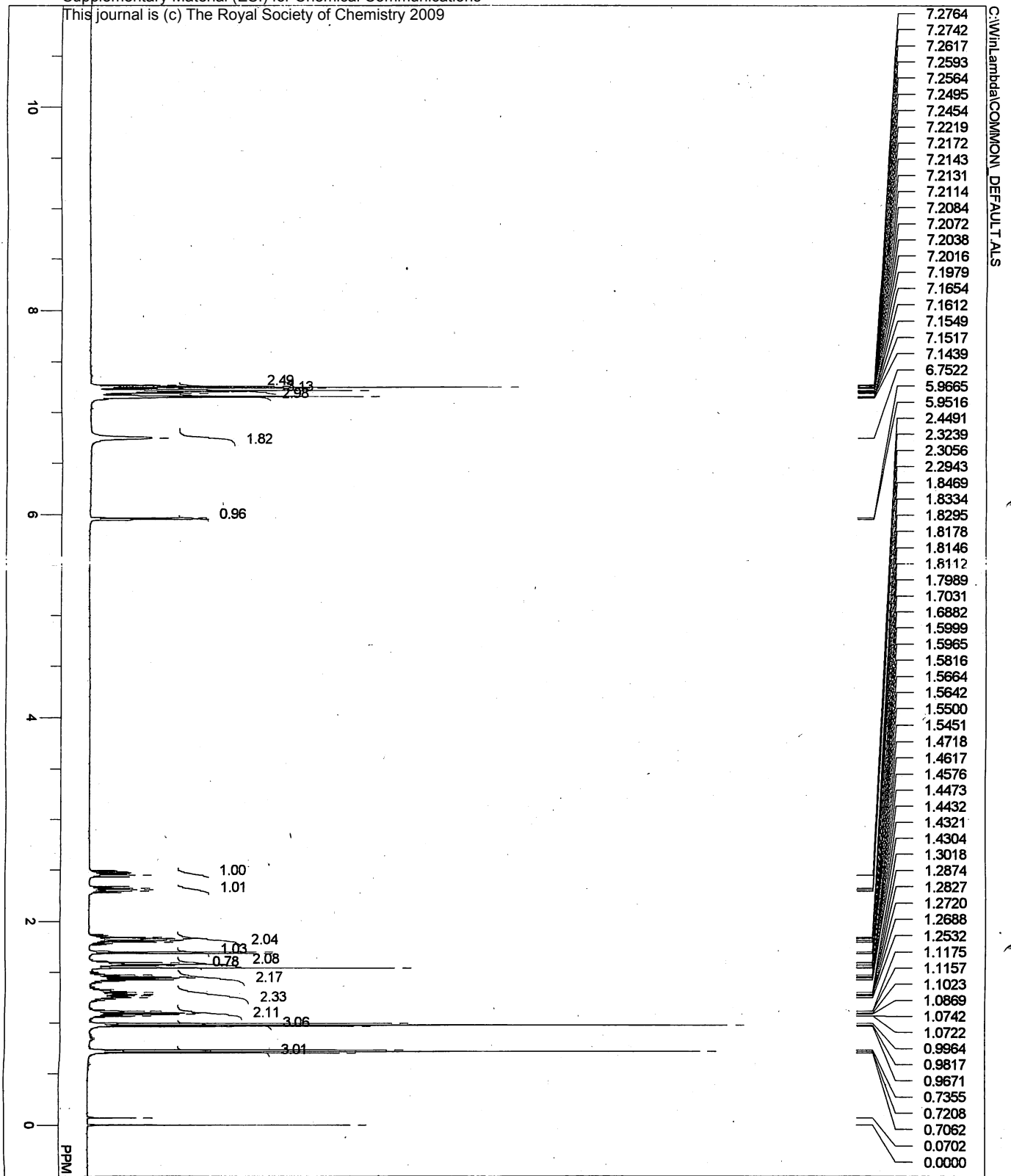


C:\WIn\lambda\data\COMMON\_DEFAULT.ALS

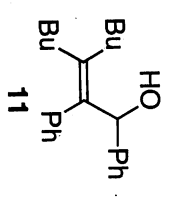


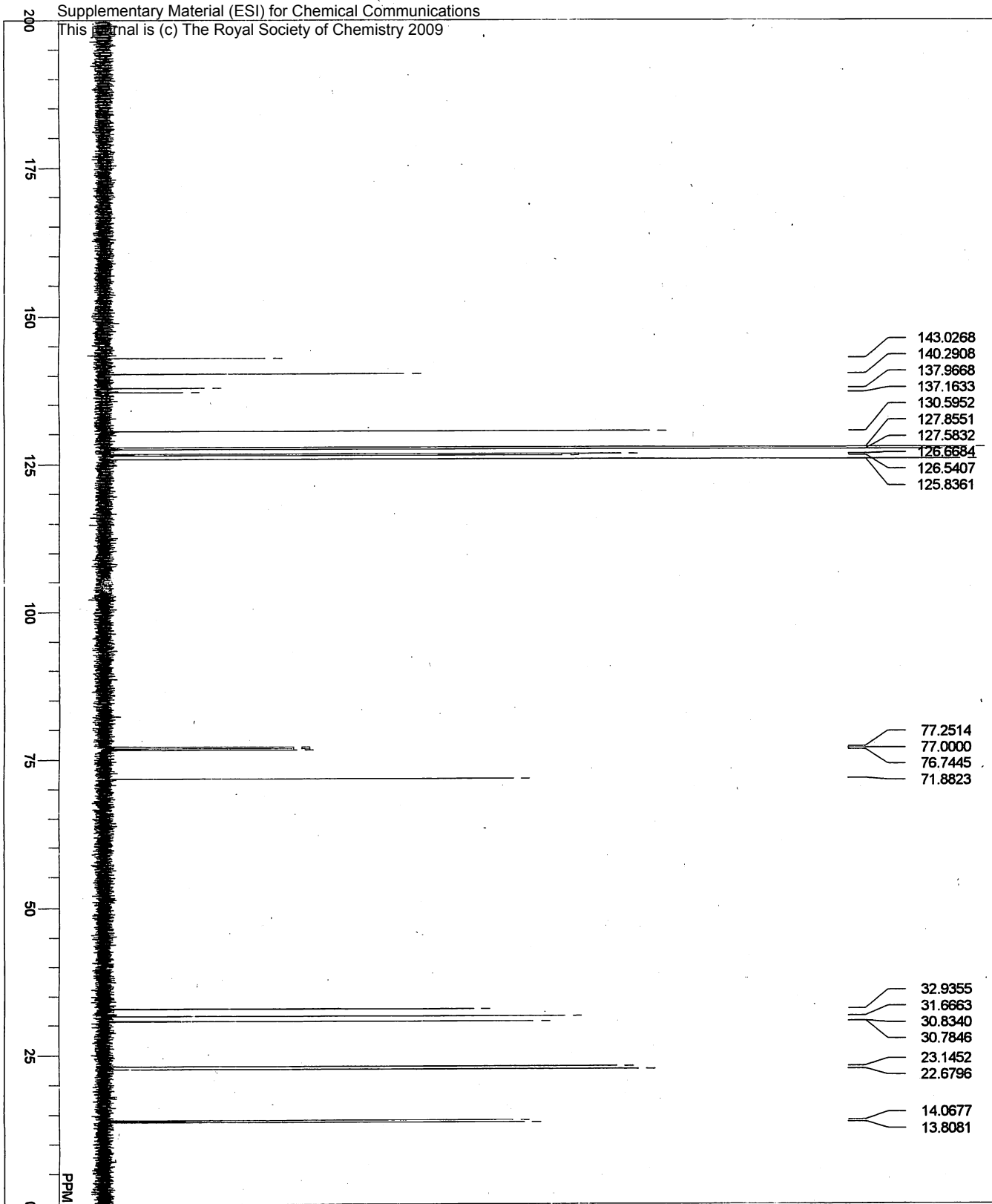
MNAME 1H  
 OBNAME 1H  
 OFR 499.10 MHz  
 OBSSET 0.00 KHz  
 OFBIN 128885.00 Hz  
 PW1 5.50 usec  
 DEADT 72.30 usec  
 PREDL 0.01000 msec  
 WWT 1000.0000 msec  
 POINT 65536  
 SPO 65536  
 TIMES 16  
 DUMMY 0  
 FREQ 8000.00 Hz  
 FLT 4000 Hz  
 DELAY 50.00 usec  
 ACQTM 8.1920 sec  
 PD 1.0000 sec  
 ADBIT 16  
 RGAIN 22  
 BF 0.12 Hz  
 T1 0.00  
 T2 0.00  
 T3 90.00  
 T4 100.00  
 EXMOD non  
 EXPCM single pulse nondecoupling & nonpresaturation  
 IRNUC 1H  
 IFR 499.10 MHz  
 IRSET 0.00 KHz  
 IRFIN 128250.00 Hz  
 IRRPW 50 usec  
 IRATN 511  
 DFLD DEFAULT.ALS  
 SF thesat  
 LKSET 0.00 KHz  
 LKFIN 26934.0 Hz  
 LKLEV 200  
 LGAIN 19  
 LKPHS 353  
 LKSIG 585  
 CSPED 10 Hz  
 FILDC  
 SLVNT CDCL3  
 DATM Wed Dec 03 13:37:10 2008



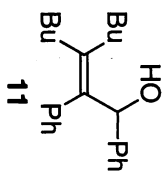


MENUF 1H  
 OBRN 1H  
 OBSBT 499.10 MHz  
 OBFIN 0.00 KHz  
 PM1 129885.00 Hz  
 DEADT 5.50 usec  
 PREDL 72.30 usec  
 IWT 0.010000 msec  
 POINT 1000.0000 msec  
 SPO 65536  
 DUMNY 16  
 TIMES 0  
 FREQU 8000.00 Hz  
 FLT 4000 Hz  
 DELAY 50.00 usec  
 ACQTM 8.1920 sec  
 PD 1.0000 sec  
 ADRIT 16  
 RGAIN 22  
 BF 0.12 Hz  
 T1 0.00  
 T2 0.00  
 T3 90.00  
 T4 100.00  
 EXMOD non  
 EXPCAM single pulse nondecoupling & nonpresaturation  
 IRNUC 1H  
 IFR 499.10 MHz  
 IRSET 0.00 KHz  
 IRFIN 128250.00 Hz  
 IRRPW 50 usec  
 IRATN 511  
 DFILE \_DEFAULT.ALS  
 SF tHsat  
 LKSET 0.00 KHz  
 LKFIN 26934.0 Hz  
 LKLEV 200  
 LGAIN 24  
 LKPHS 353  
 LKSIG 2056  
 CSPED 11 Hz  
 FLUDC  
 FLIDF  
 SLVNT CDCl3  
 DATM Tue Jan 06 00:33:55 2009

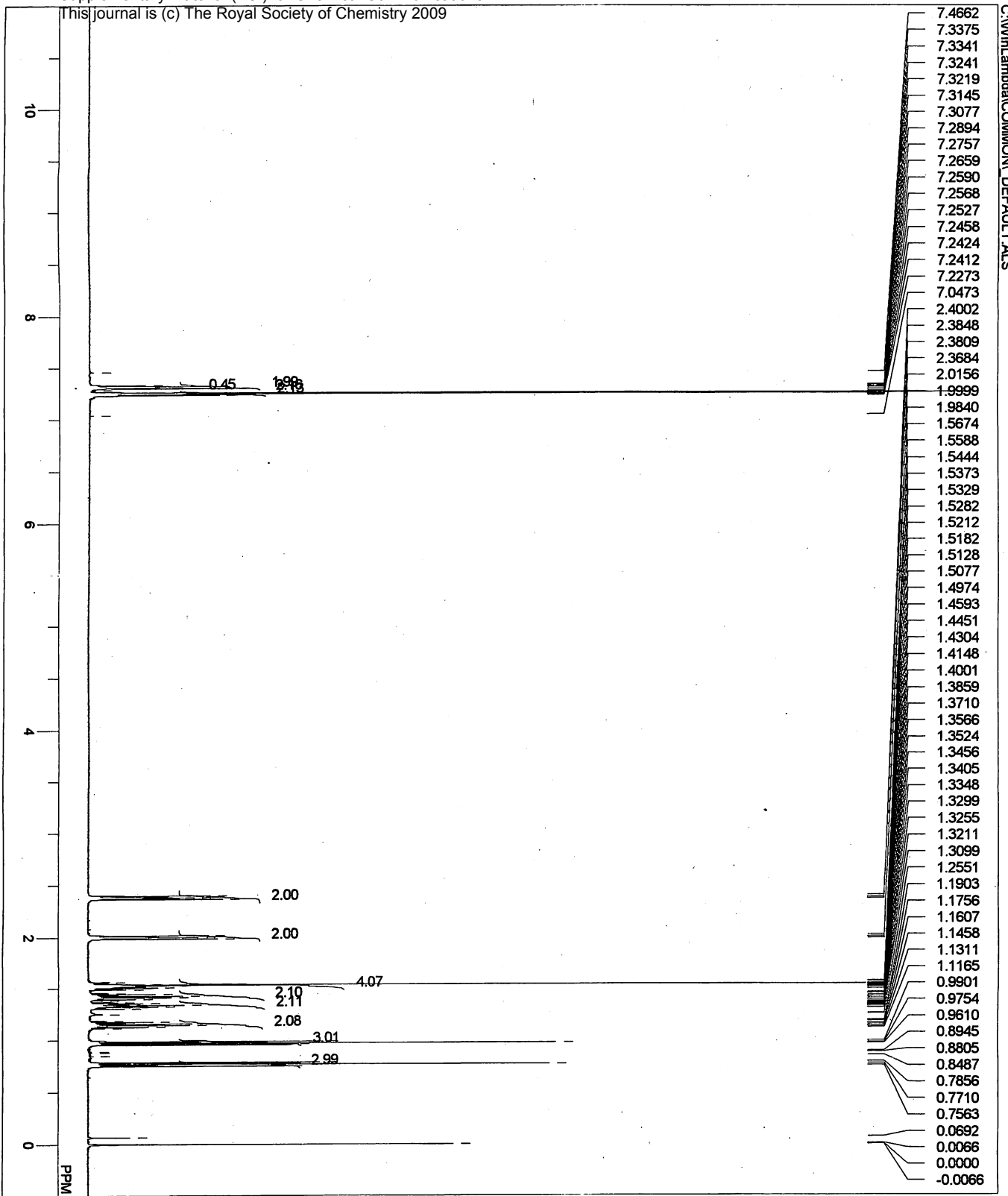




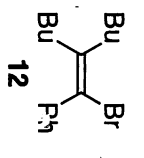
**NAME** 13C  
**OBNUC** 13C  
**OFFR** 125.40 MHz  
**OBSET** 0.00 KHz  
**OBFIN** 143041.00 Hz  
**PW1** 6.25 usec  
**DEADT** 10.00 usec  
**PREDL** 0.01000 msec  
**MT** 1000.0000 msec  
**POINT** 65536  
**SPO** 65536  
**TIMES** 256  
**DUMMY** 2  
**FREQU** 33898.30 Hz  
**FLT** 16950 Hz  
**DELAY** 11.80 usec  
**ACQTM** 1.9333 sec  
**PD** 1.0670 sec  
**ADBIT** 16  
**RGAIN** 31  
**BF** 0.12 Hz  
**T1** 0.00  
**T2** 0.00  
**T3** 90.00  
**T4** 100.00  
**EXMOD** bnm  
**EXPCM** single pulse with bilevel decoupling  
**IRNUC** 1H  
**IFR** 499.10 MHz  
**IRSET** 0.00 KHz  
**IRFIN** 128250.00 Hz  
**IRRPW** 50 usec  
**IRATT** 511  
**DFILE** \_DEFAULTS  
**SF** tfsat  
**LKSET** 0.00 KHz  
**LKFIN** 26934.0 Hz  
**LKLEV** 200  
**LGAIN** 21  
**LKPHS** 353  
**LKSIG** 855  
**CSPED** 13 Hz  
**FILDC**  
**FILDF**  
**SLVNT**  
**DATM** CDCL3  
 Tue Jan 06 13:56:41 2009

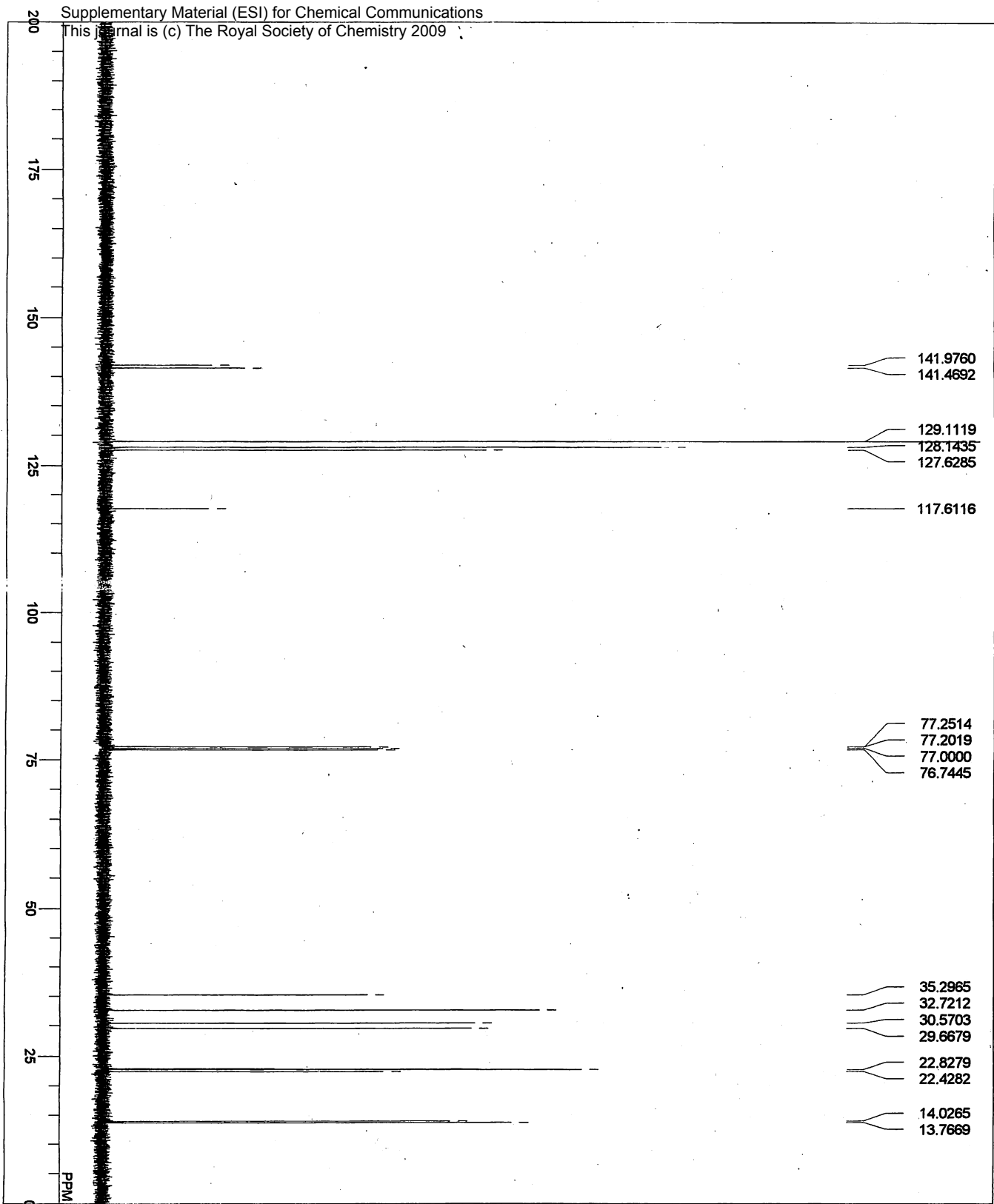






MENUF 1H  
 OBNUC 1H  
 OFR 499.10 MHz  
 OBSET 0.00 KHz  
 OFBIN 128885.00 Hz  
 PW1 5.50 usec  
 DEADT 72.30 usec  
 PREDL 0.01000 msec  
 IWT 1000.0000 msec  
 POINT 65536  
 SPO 65536  
 TIMES 16  
 DUMMY 0  
 FREQU 8000.00 Hz  
 FLT 4000 Hz  
 DELAY 50.00 usec  
 ACQTM 8.1920 sec  
 PD 1.0000 sec  
 ADBIT 16  
 RGAIN 26  
 BF 0.12 Hz  
 T1 0.00  
 T2 0.00  
 T3 90.00  
 T4 100.00  
 EXMOD non  
 EXPCM single pulse nondecoupling & nonpresaturation  
 IRNUC 1H  
 IFR 499.10 MHz  
 IRSET 0.00 KHz  
 IRFIN 128250.00 Hz  
 IRRPW 50 usec  
 IRATN 511  
 DFILE \_DEFAULT.ALS  
 SF thsat  
 LKSET 0.00 KHz  
 LKFIN 26934.0 Hz  
 LKLEV 200  
 LGAIN 22  
 LKPHS 353  
 LKSIG 1148  
 CSPED 15 Hz  
 FILDC  
 FILDF  
 SLVNT CDCL3  
 DATIM Wed Jan 07 12:34:47 2009





MENUF	13C
OBNUC	13C
OFFR	125.40 MHz
OBSET	0.00 KHz
OBFLY	143041.00 Hz
PMW1	6.25 usec
DEADT	10.00 usec
PREDL	0.01000 msec
IWTT	1000.0000 msec
POINT	65536
SPO	65536
TIMES	1024
DUMMY	2
FREQU	33898.30 Hz
FLT	16950 Hz
DELAY	11.80 usec
ACQTM	1.9333 sec
PD	1.0670 sec
ADBIT	16
RGAIN	30
BF	0.12 Hz
T1	0.00
T2	0.00
T3	90.00
T4	100.00
EXMOD	bm
EXPCM	single pulse with bilvel decoupling
IRNUC	1H
IFR	499.10 MHz
IRSET	0.00 KHz
IRFIN	128250.00 Hz
IRRPW	50 usec
IRATN	511
DFILE	_DEFAULT.ALS
SF	thsat
LKSET	0.00 KHz
LKFIN	26934.0 Hz
LKLEY	200
LGAIN	21
LKPHS	353
LKSIG	836
CSPED	10 Hz
FILDC	
FILDF	
SLVNT	CDCL3
DATIM	Wed Jan 07 15:23:43 2009

