

Supplementary Information

Probe for i-motif structure and G-rich strand using end-stacking ability

Il Joon Lee, Jeong Wu Yi, and Byeang Hyeon Kim*

*Department of Chemistry, BK School of Molecular Science
Pohang University of Science and Technology, Pohang 790-784, Korea*

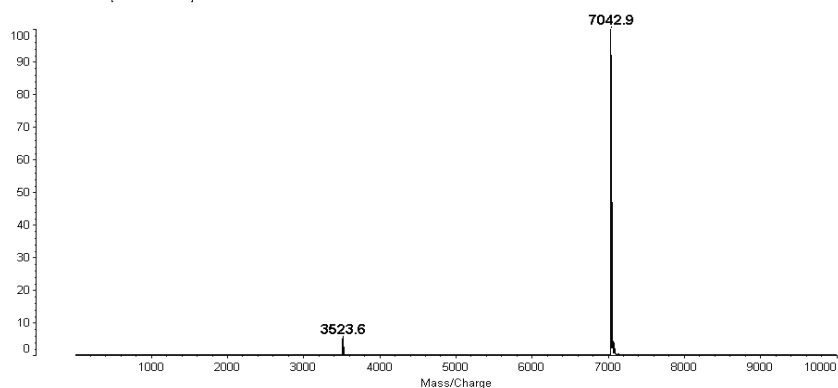
- S2 Table S1. MALDI-TOF mass spectral data.
- S3 Figure S1. MALDI-TOF mass spectral data

Table S1 MALDI-TOF mass spectral data

Sequence	MALDI-TOF signal [M^+]	
	Calc. m/z	Found m/z
ODN py	7041.5	7042.9
ODN C	6504.3	6506.0
ODN G	6966.6	6967.9

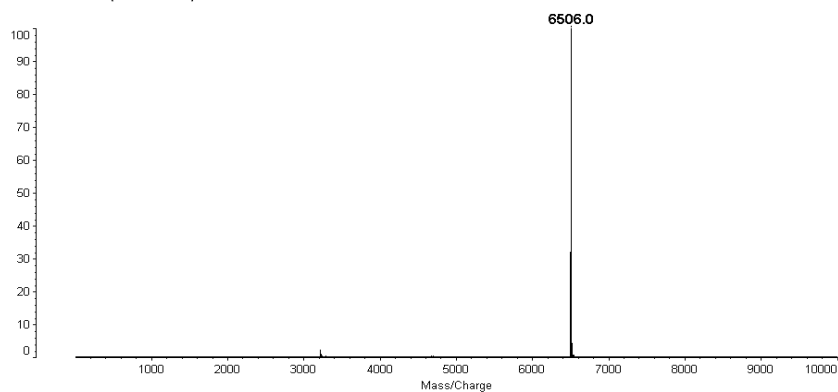
(a)

Kratos PC Axima LNR V2.3.5: Mode linear02, Power: 132, P.Ext. @ 9000 (bin 147)
%Int. 69 mV[sum= 276 mV] Profiles 5-8 Smooth Gauss 20 -Baseline 30



(b)

Kratos PC Axima LNR V2.3.5: Mode linear02, Power: 126, P.Ext. @ 8000 (bin 138)
%Int. 64 mV[sum= 193 mV] Profiles 1-3 Smooth Gauss 20 -Baseline 30



(c)

Kratos PC Axima LNR V2.3.5: Mode linear, Power: 139, P.Ext. @ 8000 (bin 138)
%Int. 81 mV[sum= 162 mV] Profiles 1-2: Averaged

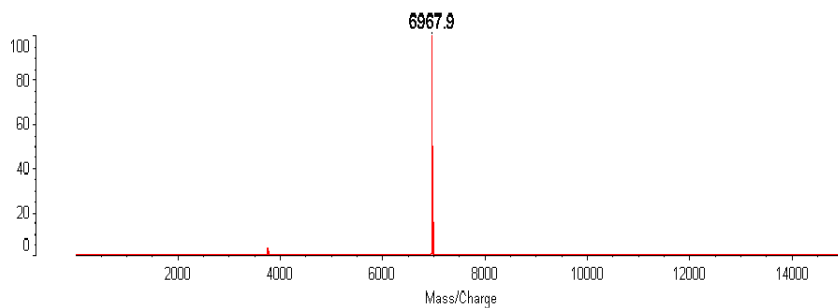


Fig. S1 MALDI-TOF mass spectral data of (a) **ODN py**, (b) **ODN C**, and (c) **ODN G**