

Controlled drug release from mesoporous materials by plasma polymer deposition

Spomenka Simovic, Dusan Losic, and Krasimir Vasilev

Electronic Supplementary Information (ESI):

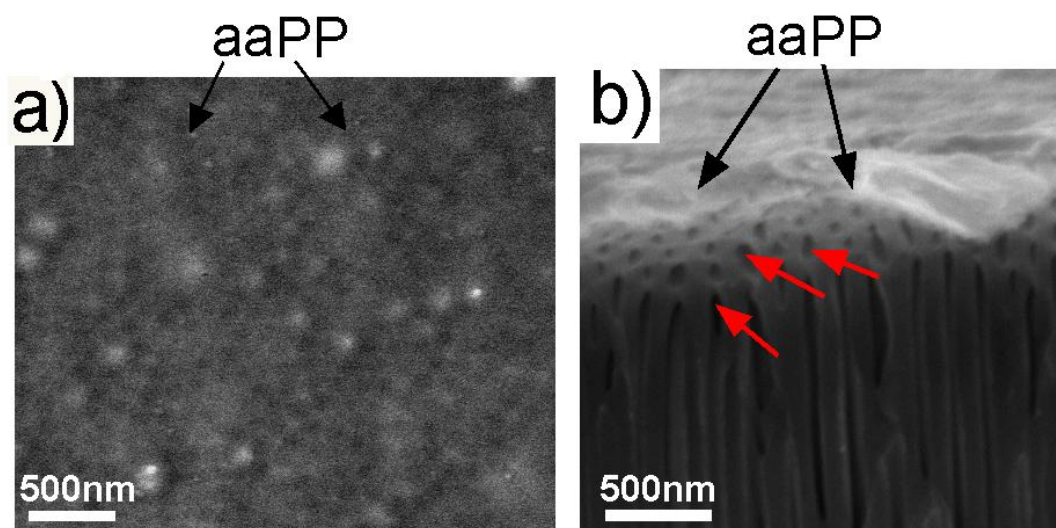


Figure S1. SEM of plasma polymer (aa PP) deposited on AAO using 300 s deposition time. a) the top surface with polymer and b) cross-sectional AAO where red arrows shows fractured parts of nanopores to confirm the absence of polymer inside of pores.

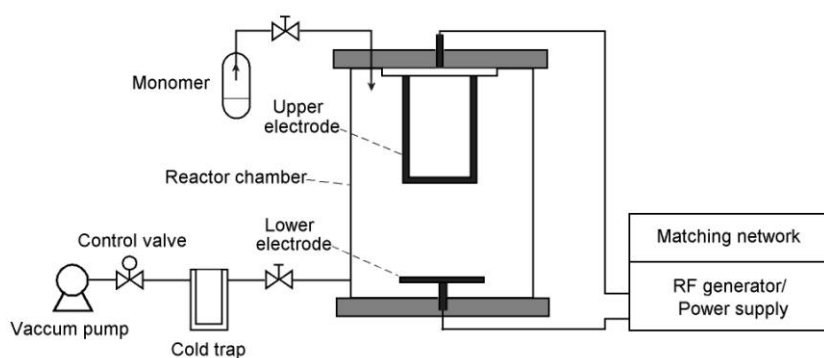


Figure S2. Schematic diagram of the plasma polymerization reactor