

On the absorption of the phenolate chromophore in the Green Fluorescent Protein – Role of individual interactions

Kasper Lincke,^a Theis Sølling,^a Lars H. Andersen,^b Benedikte Klærke,^b Dennis B. Rahbek,^b Jyoti Rajput,^b Christian Berg Oehlenschläger,^a Michael Åxman Petersen^a and Mogens Brøndsted Nielsen*^a

^a *Department of Chemistry, University of Copenhagen, Universitetsparken 5, DK-2100, Copenhagen Ø, Denmark.*

Fax: +45 35320212; Tel: +45 3532 0210; E-mail: mbn@kiku.dk

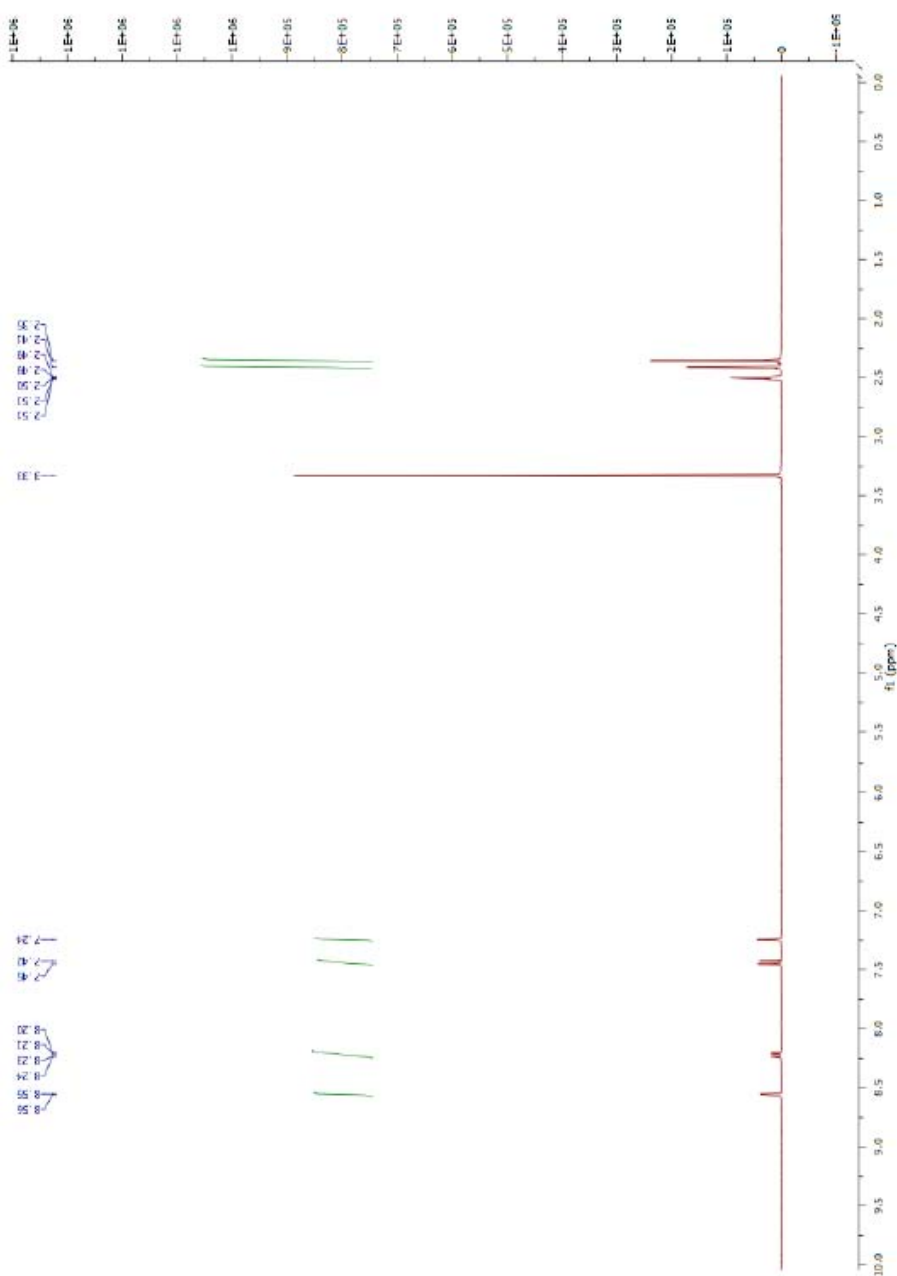
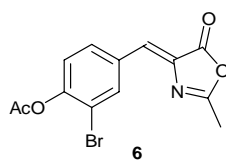
^b *Department of Physics and Astronomy, Aarhus University, Ny Munkegade, DK-8000, Aarhus C, Denmark.*

Supporting Information

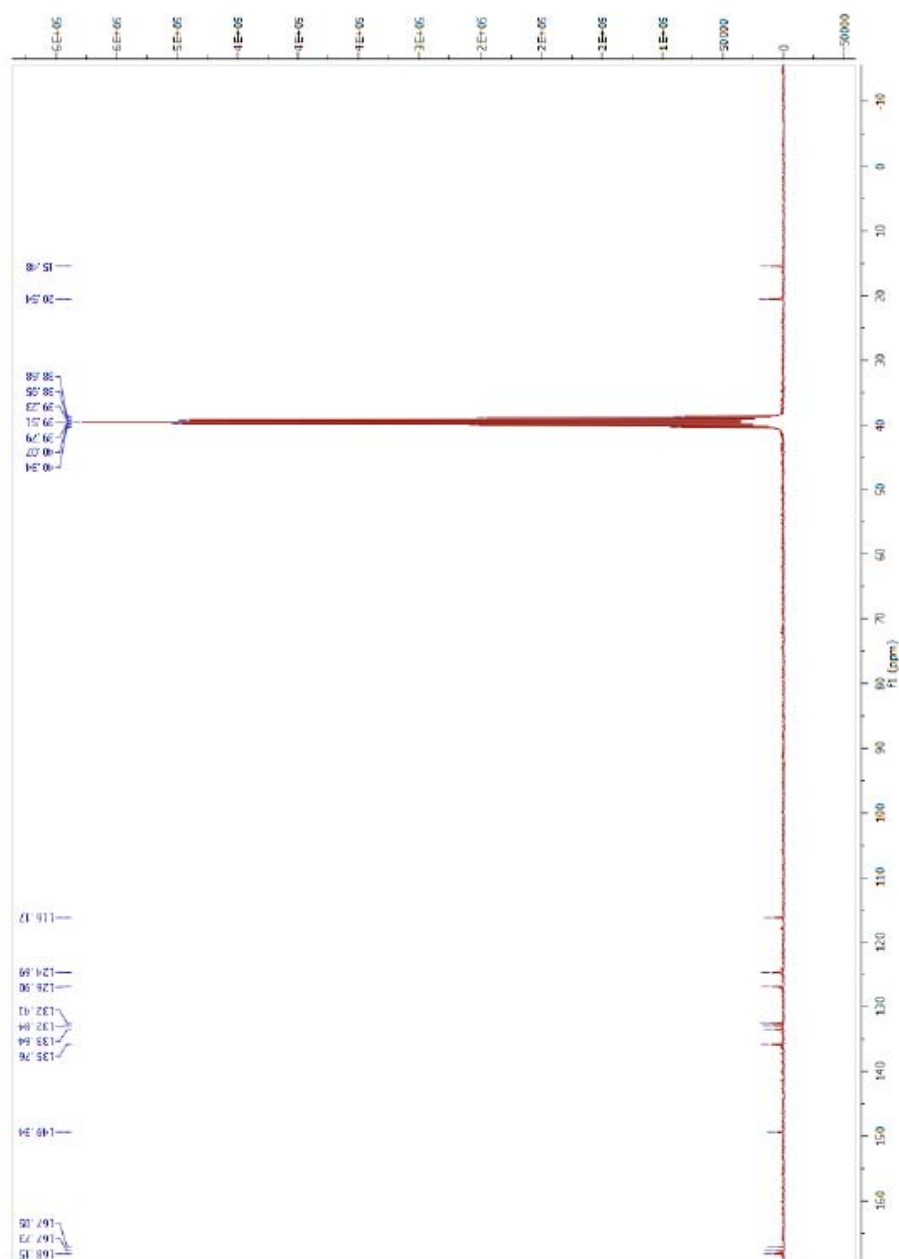
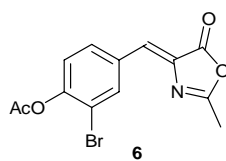
NMR Spectra of Compounds 3 and 6

UV-Vis Absorption Spectra of Compound 3 in Methanol

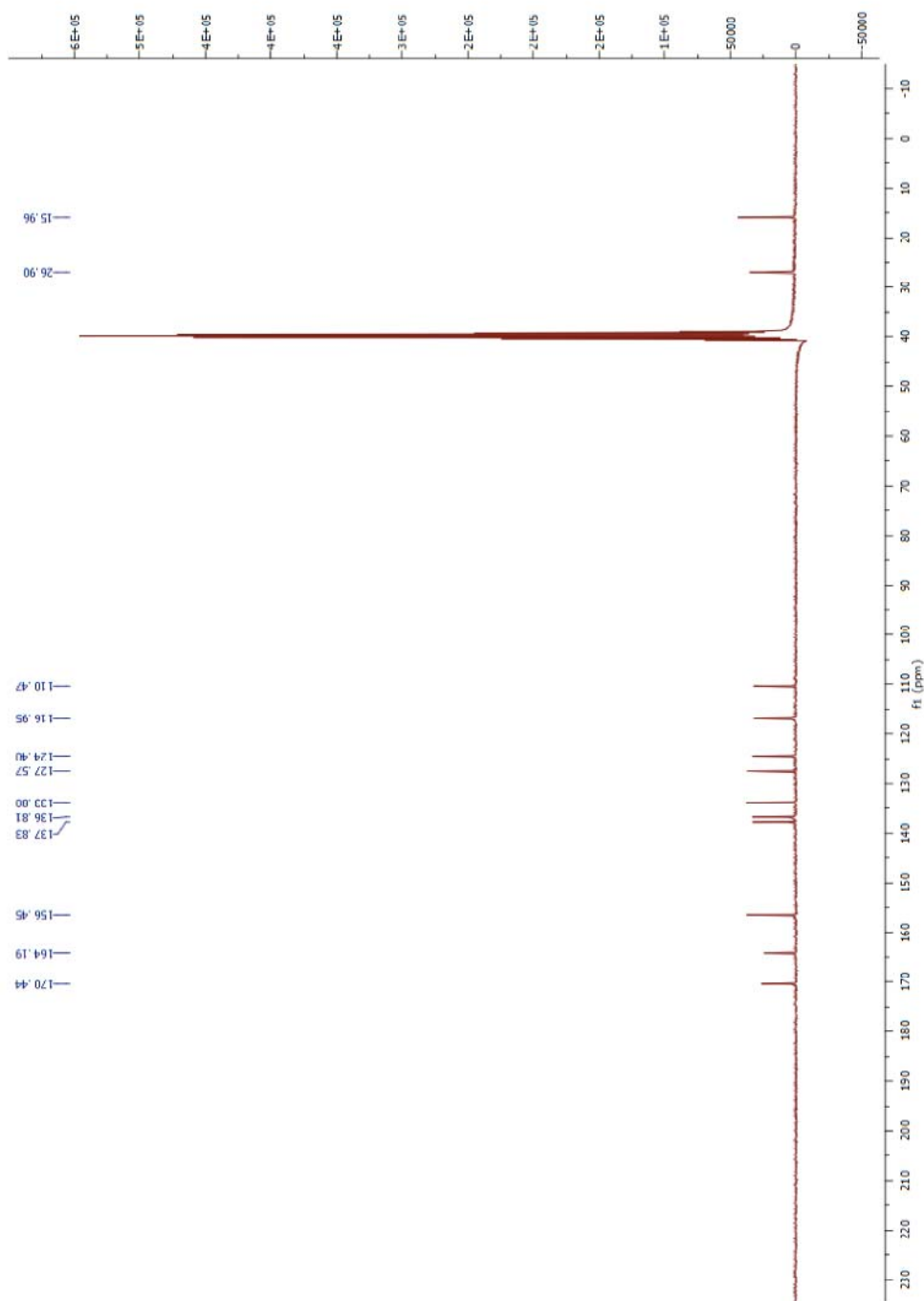
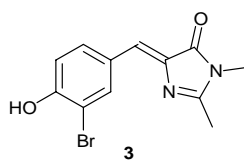
$^1\text{H-NMR}$ (DMSO- d_6 , 300 MHz) of Compound 6



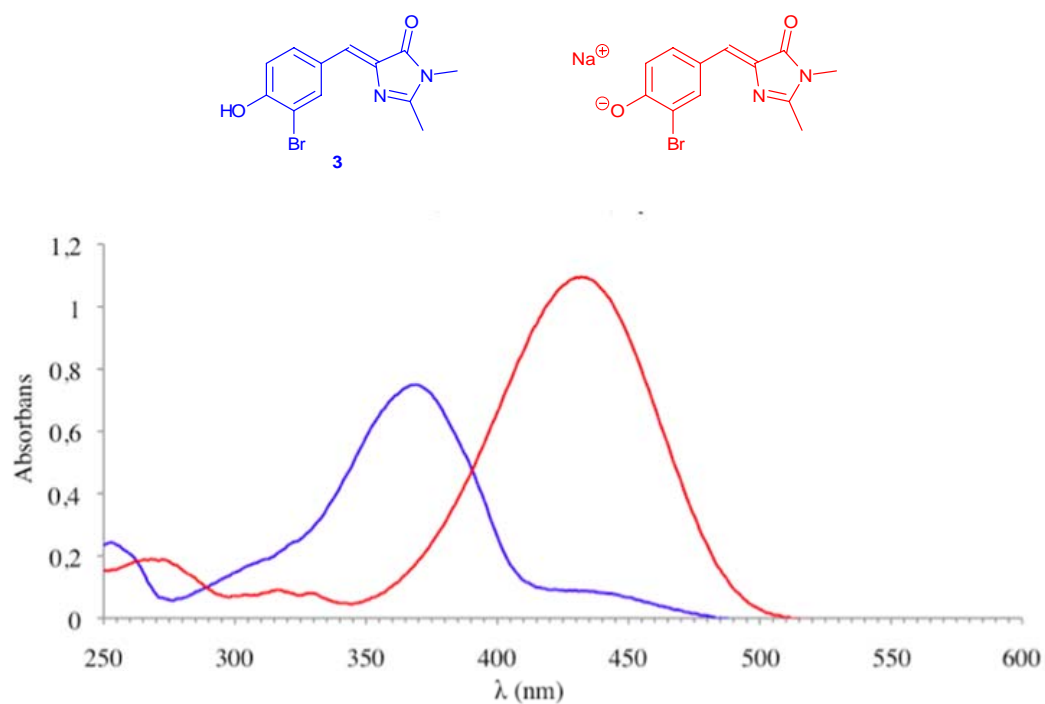
^{13}C -NMR (DMSO- d_6 , 75 MHz) of Compound 6



^{13}C -NMR (DMSO- d_6 , 75 MHz) of Compound 3



UV-Vis Absorption Spectra of Compound 3 in MeOH
(blue curve: neutral phenol; red curve: sodium phenolate)



The phenolate was obtained by deprotonating the phenol with NaOMe.

The blue curve shows a shoulder corresponding to the presence of a small amount of phenolate (in equilibrium with the phenol in MeOH).