

Supporting Information for

**Specific Derivatization of Lysozyme in Aqueous Solution with  $\text{Re}(\text{CO})_3(\text{H}_2\text{O})_2^+$**

Sarah L. Binkley<sup>a</sup>, Christopher J. Ziegler<sup>\*a</sup>, Richard S. Herrick<sup>b</sup>, Roger S. Rowlett<sup>c</sup>,

<sup>a</sup>*Department of Chemistry, University of Akron, Akron OH 44325-3601*

<sup>b</sup>*Department of Chemistry, College of the Holy Cross, Worcester, MA 01610*

<sup>c</sup>*Department of Chemistry, Colgate University, 13 Oak Drive, Hamilton, NY 13346*

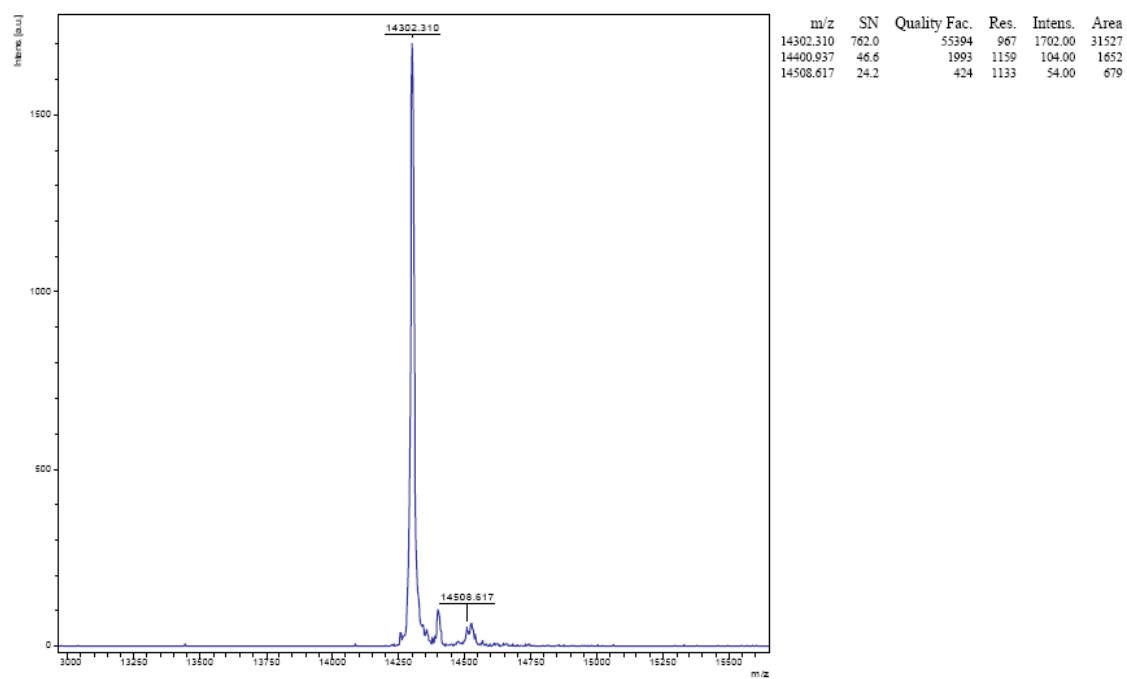


Figure S1: MALDI MS of native lysozyme.

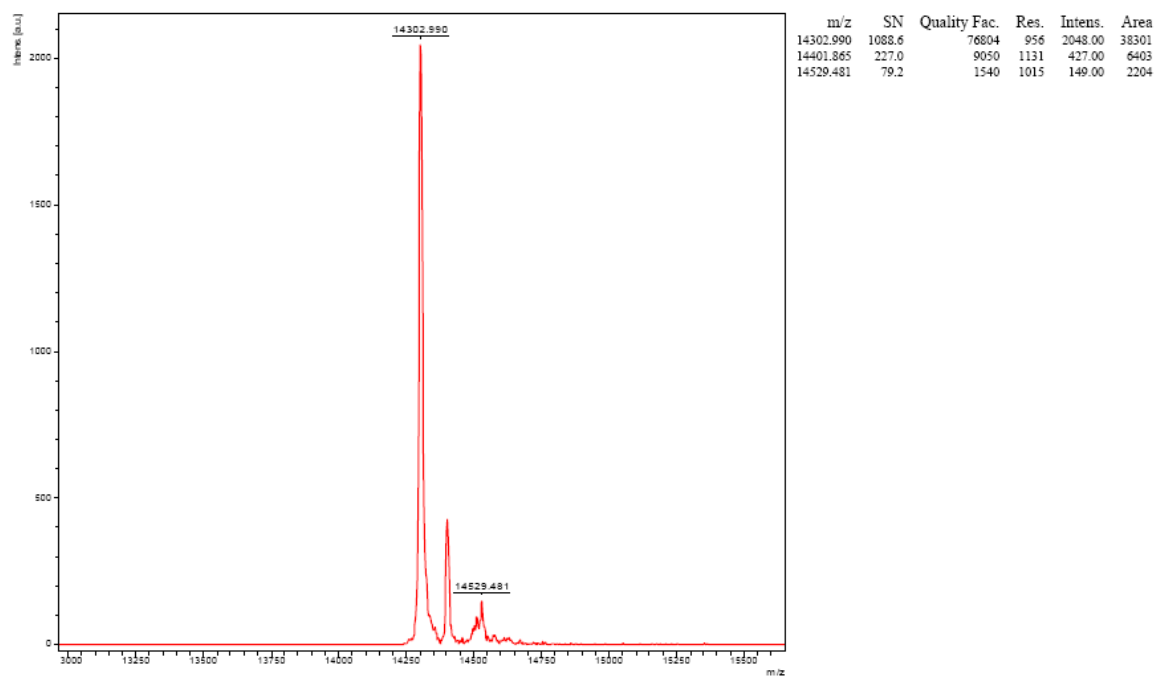


Figure S2: MALDI MS of 1:0.1 native lysozyme:  $\text{Re}(\text{CO})_3(\text{H}_2\text{O})_3^+$  reaction solution.

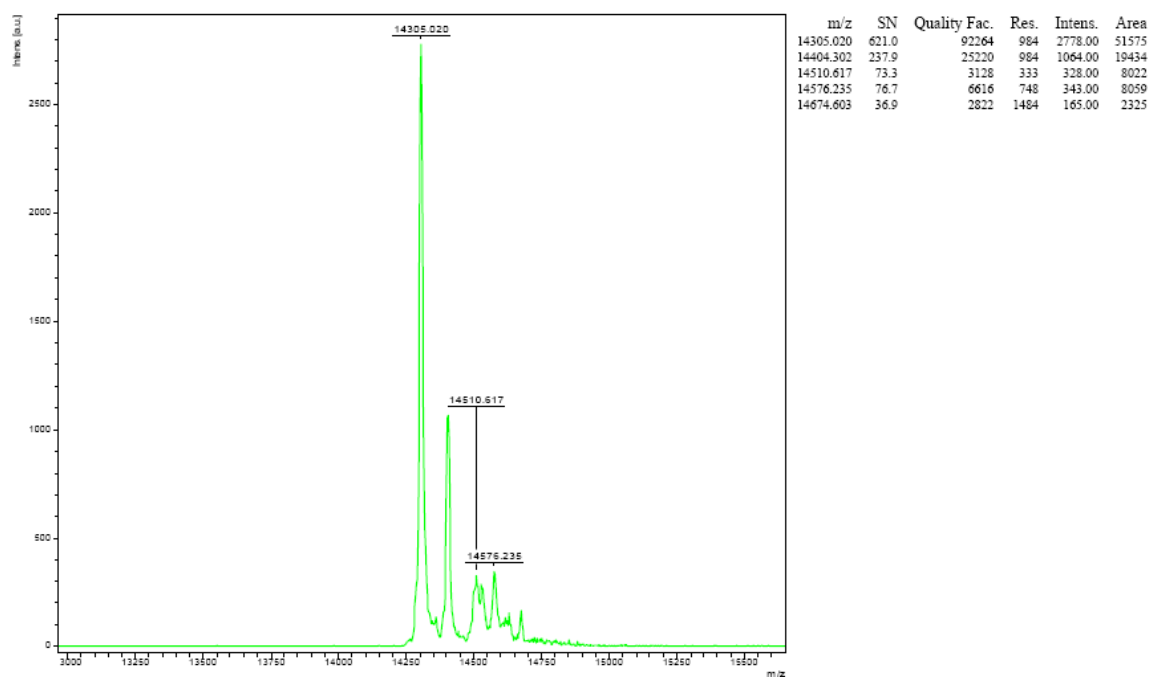


Figure S3: MALDI MS of 1:0.5 native lysozyme:  $\text{Re}(\text{CO})_3(\text{H}_2\text{O})_3^+$  reaction solution.

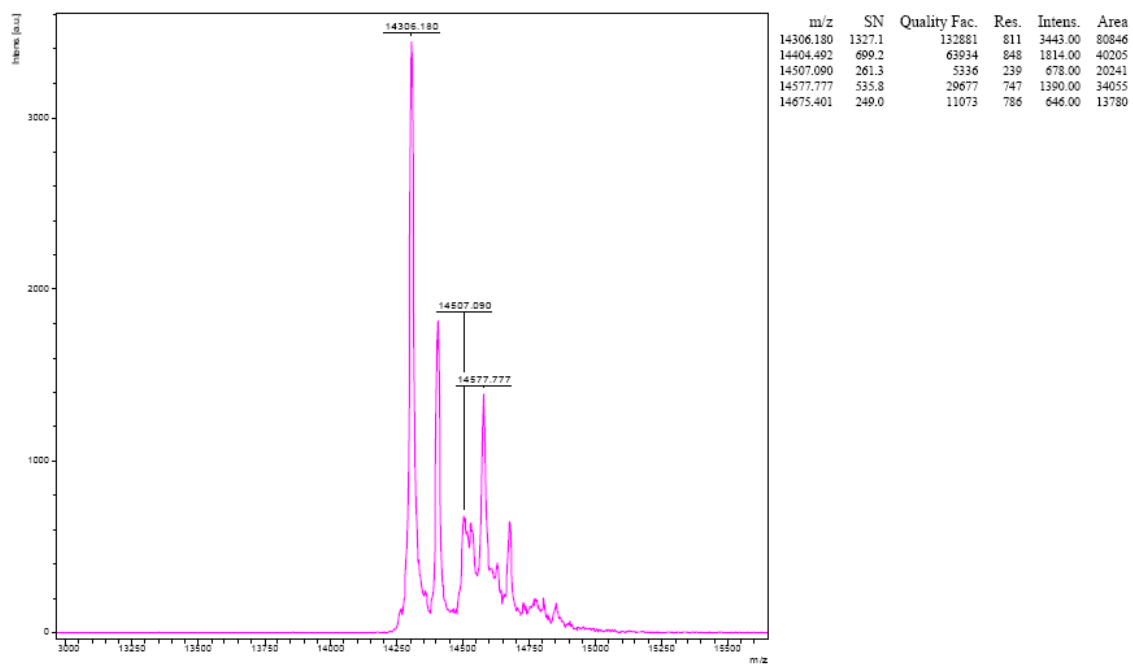


Figure S4: MALDI MS of 1:1 native lysozyme:  $\text{Re}(\text{CO})_3(\text{H}_2\text{O})_3^+$  reaction solution.

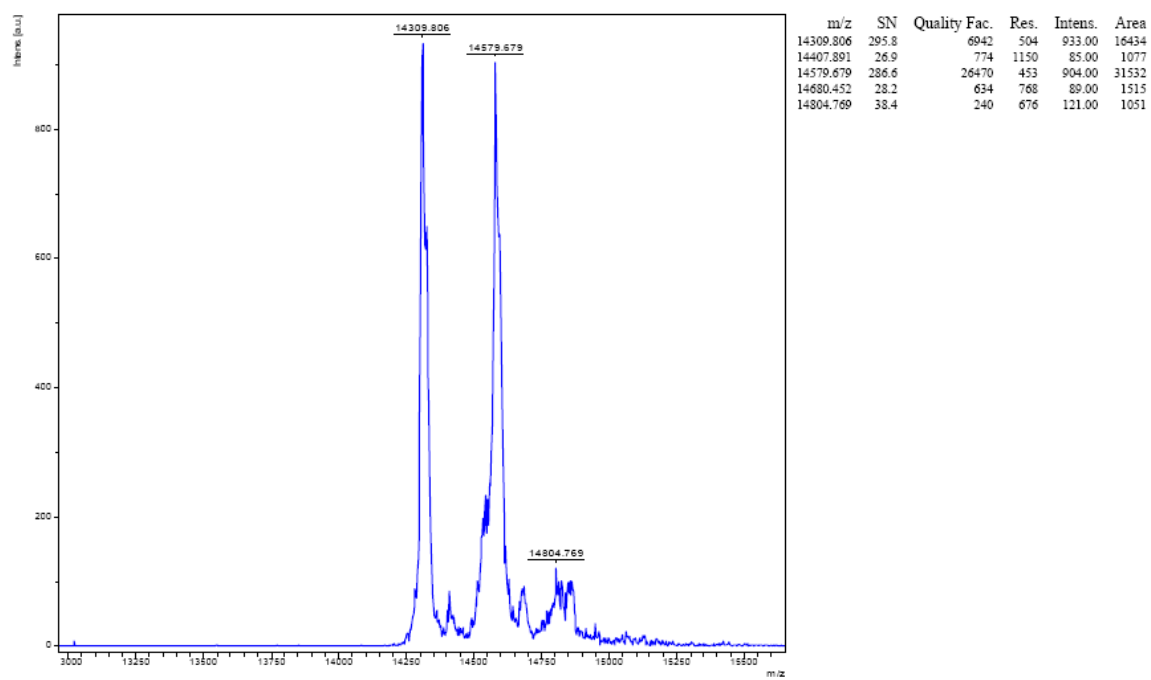


Figure S5: MALDI MS of 1:2 native lysozyme:  $\text{Re}(\text{CO})_3(\text{H}_2\text{O})_3^+$  reaction solution.

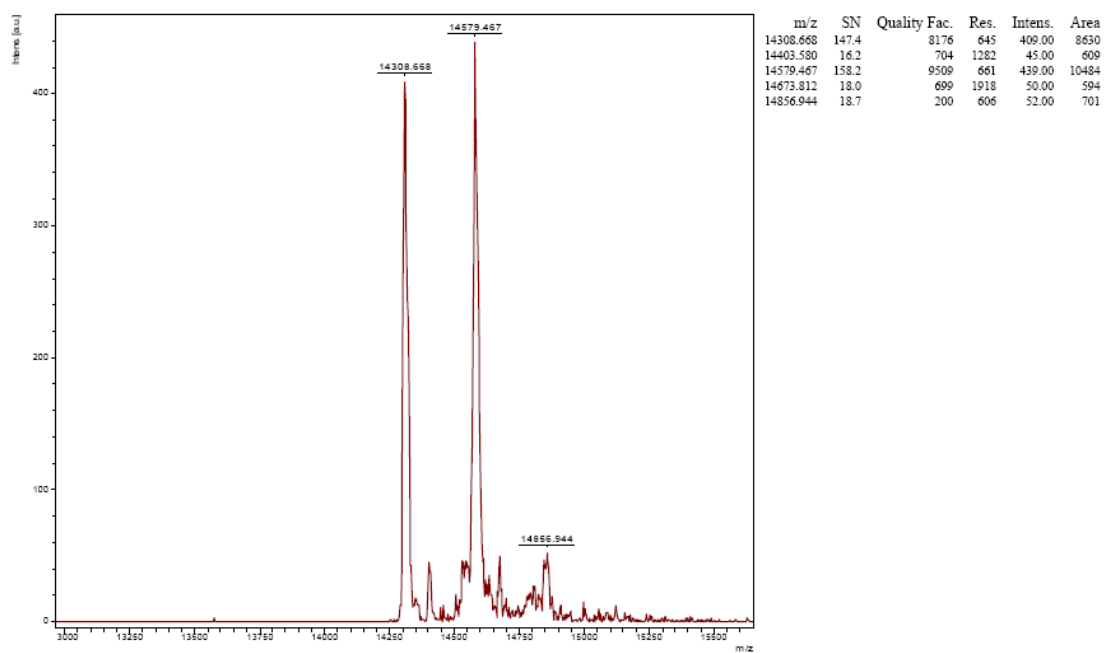


Figure S6: MALDI MS of 1:3 native lysozyme:  $\text{Re}(\text{CO})_3(\text{H}_2\text{O})_3^+$  reaction solution.

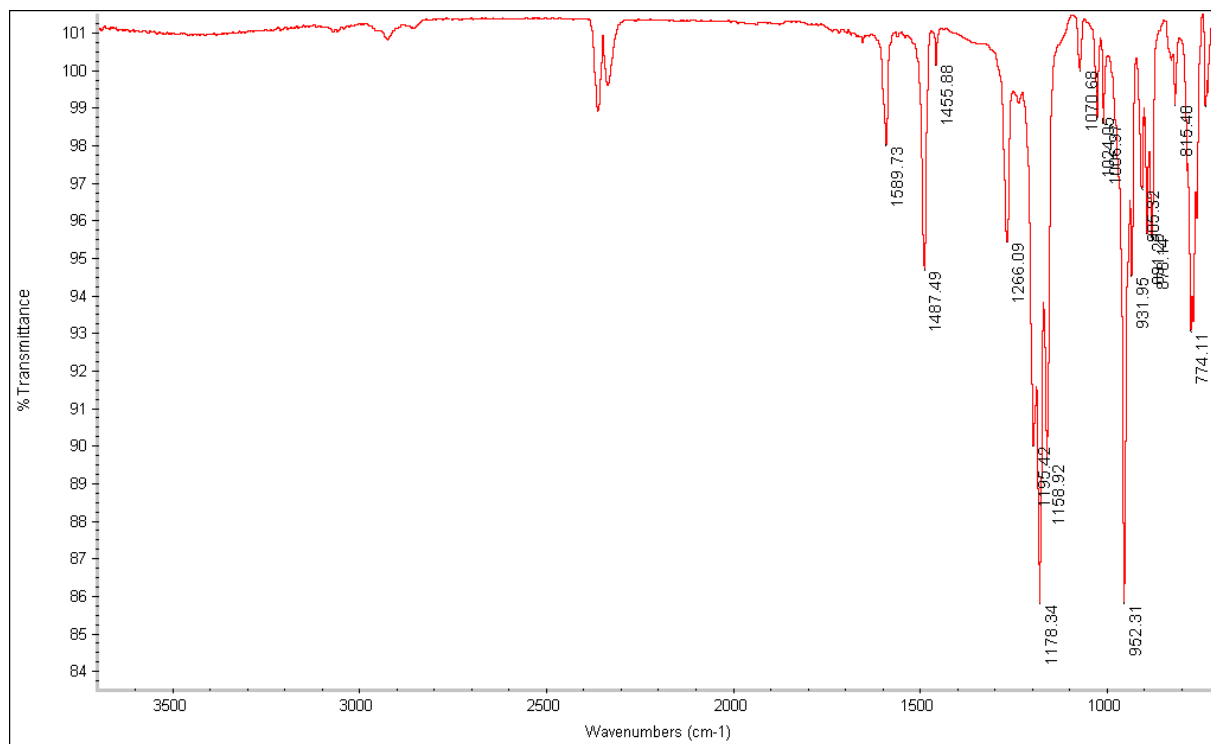


Figure S7: Full IR spectrum of a film (made using acetone) of lyophilized (dry) lysozyme.



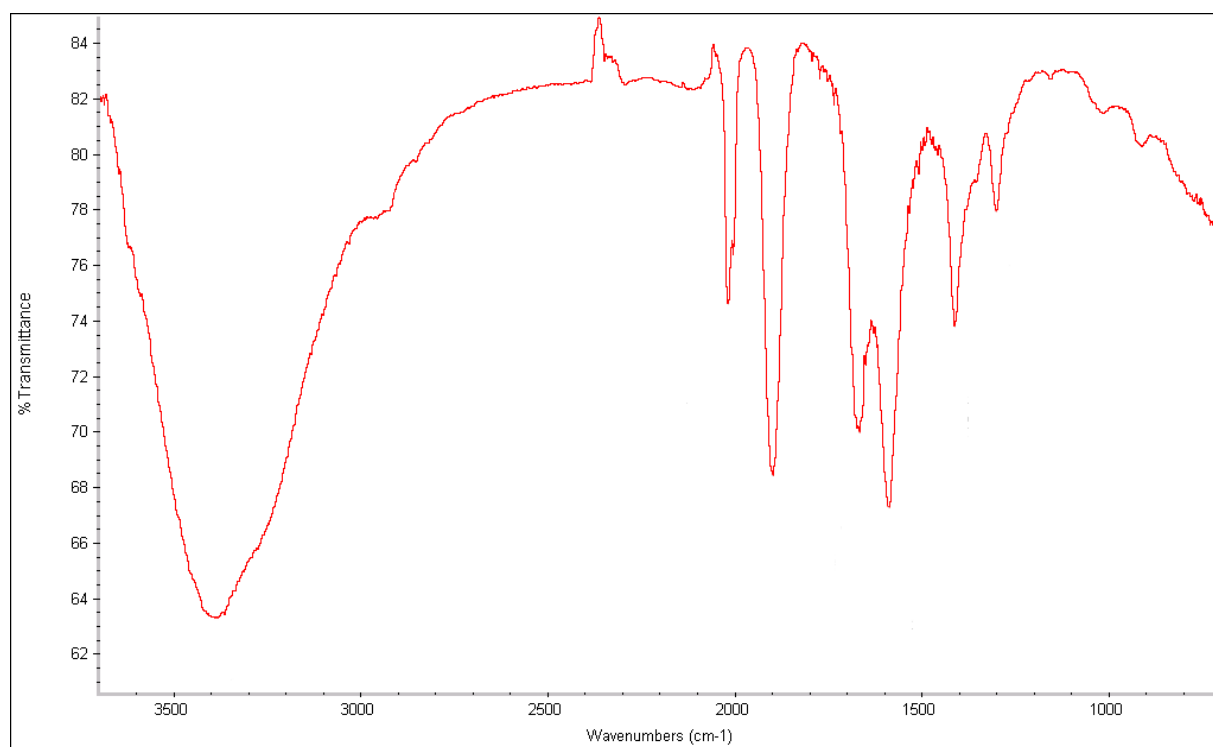


Figure S8: Full IR spectrum of a film (made using acetone) from crystals grown from the 1:3 lysozyme:  
 $\text{Re}(\text{CO})_3(\text{H}_2\text{O})_3^+$  reaction solution, showing the intensity of the carbonyl stretching bands.