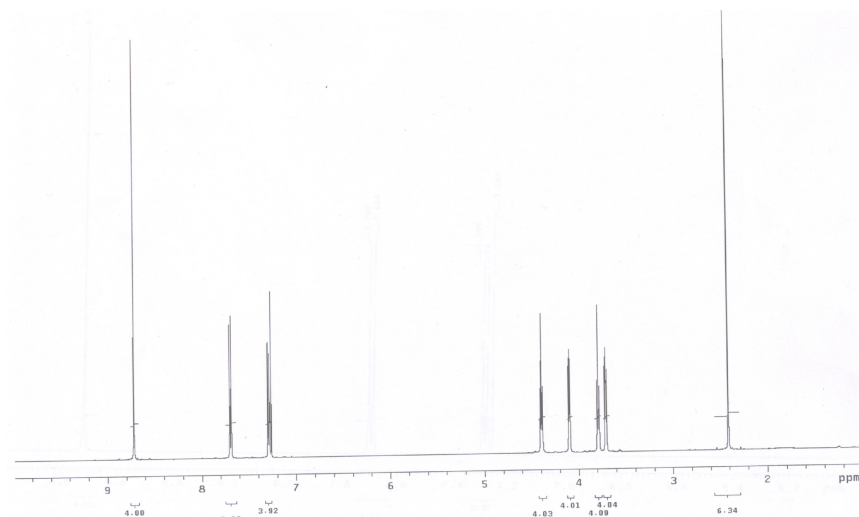


Supplementary Information

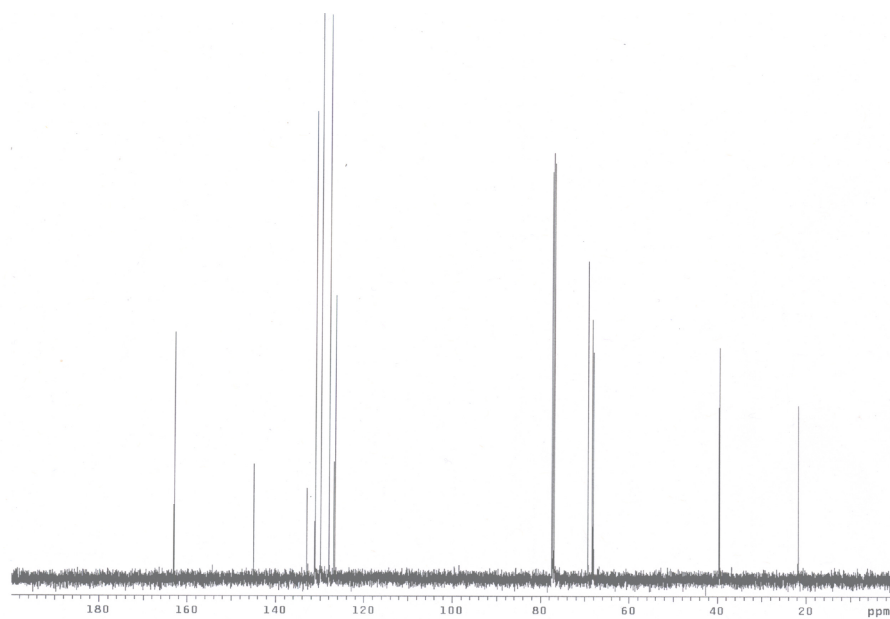
Melt-Induced Fluorescent Signature in a Simple Naphthalenediimide

Toby D. M. Bell,^{a,b} Sheshanath V. Bhosale,^a Craig M. Forsyth,^a David Hayne,^b Kenneth P. Ghiggino,^{b*} James A. Hutchinson,^{b,c} Chintan H. Jani,^a Steven J. Langford,^{a*} Marcia A.-P. Lee^a and Clint P. Woodward^a

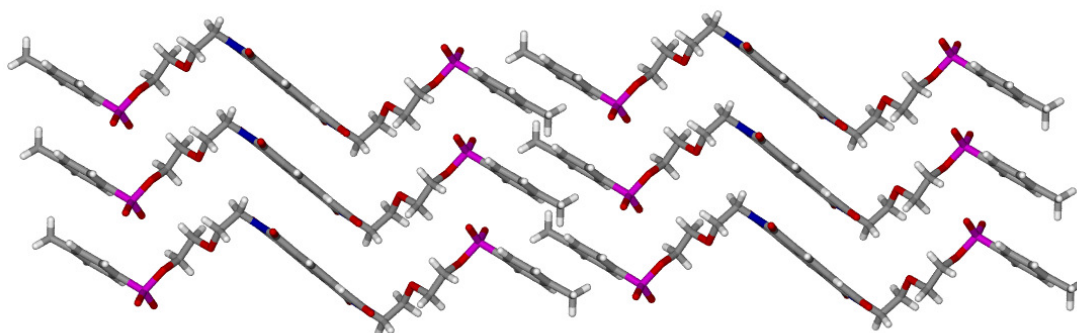
S1: ¹H NMR Spectra of **2**



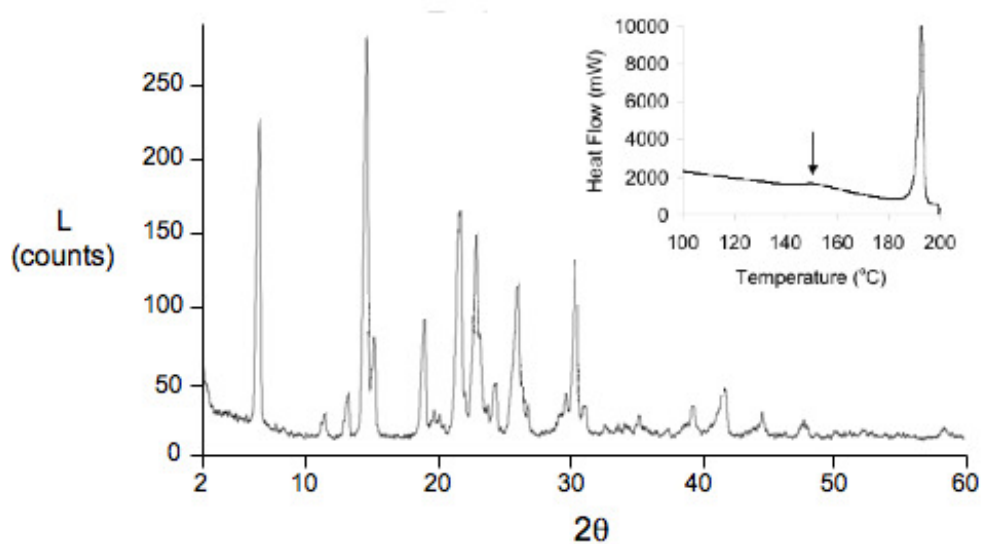
S2: ¹³C NMR Spectra of **2**



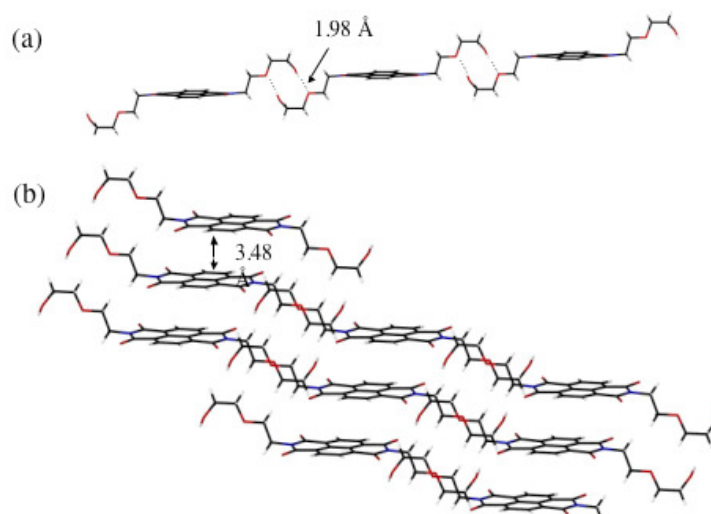
S3: Macromolecular structure of **2**



S4: XRD of **1** with DSC inset



S5: X-ray structure of **1**



(a) hydrogen bonding tapes in single layer and (b) aromatic stabilisation between layers.

S6: Fluorescence spectra of **1** as crystal and melt

