

Electronic Supplementary Information

Interaction of solid supported liquid-crystalline phospholipid membrane with physical vapor deposited metal atoms[†]

Hyeun Hwan An,^a Jung Hoon Kim,^a Jong Ho Lee,^a Dae Hoon Kwon,^a Hee-Soo Kim,^a Young Ho Kim and Chong Seung Yoon^{*a}

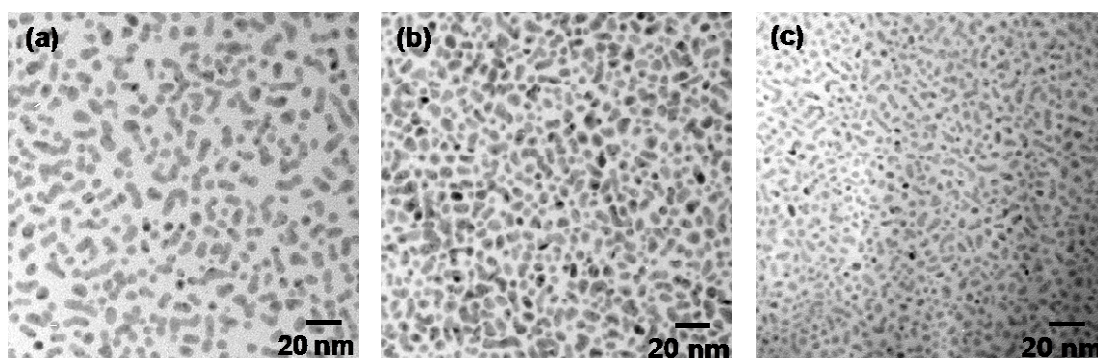


Figure. S1. TEM images of nanoparticles formed from metals deposited on the DOPC membrane.

(a) Ag 3 nm, (b) Au 3 nm, (c) Pd 1 nm

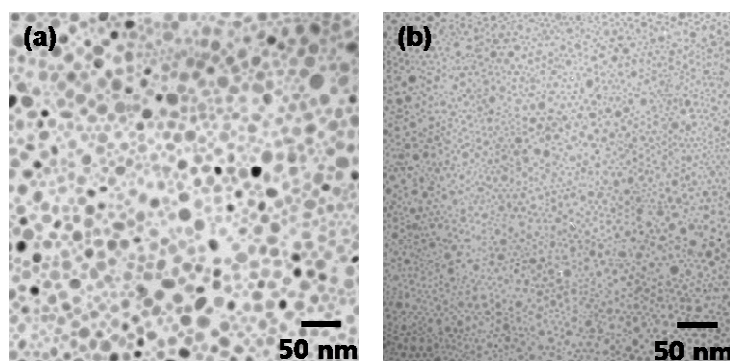


Figure. S2. TEM images of nanoparticles formed from metals deposited on the DOPC membrane.

(a) Sn 5 nm, (b) In 5 nm

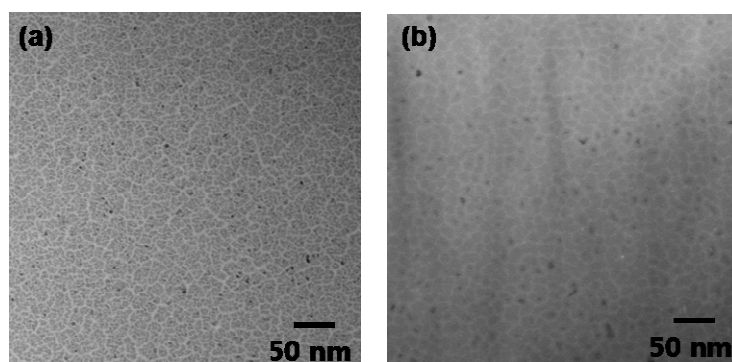


Figure. S3. TEM images of nanoparticles formed from metals deposited on the DOPC membrane.

(a)Co 6 nm, (b) Al 5 nm