

Supporting Information for

Sortase A-Catalyzed Peptide Cyclization for the Synthesis of Macrocyclic Peptides and Glycopeptides

Zhimeng Wu, Xueqing Guo, and Zhongwu Guo*

Department of Chemistry, Wayne State University, 5101, Cass Avenue, Detroit, MI, 48202,

zwguo@chem.wayne.edu

Table of Contents:

1. Solid-Phase Synthesis of Peptides 1 , 6 , 7 , and 8 and Glycopeptide 9	1
2. SrtA-Mediated Reactions for the Synthesis of Macrocyclic Peptides and Glycopeptides	5
3. MALDI-TOF MS Spectra of Enzymatic Peptide and Glycopeptide Products ...	11

1. Synthesis of Peptides **1**, **6**, **7**, and **8** and Glycopeptide **9**

1.1. Solid-phase Synthesis of Peptides **1**, **6**, **7**, and **8**

Automatic solid-phase peptide synthesis (SPPS) was carried out with a peptide synthesizer on a 0.1 mmol scale, starting from the commercial Wang resin loaded with a serine residue employing standard protocols and Fmoc chemistry. The completed peptides were released from the resin with simultaneous side-chain deprotection using 95% (v/v) trifluoroacetic acid (TFA) in water containing 2.5% (v/v) of triethylsilane (Et₃SiH). All of the products were purified by HPLC and characterized by MALDI-TOF MS (Figures 1-4). **1**, calcd for C₆₀H₁₀₁N₁₇O₂₄: 1443.7, observed 1445.1 [M+H]⁺; **6**, calcd for C₆₂H₁₀₄N₁₈O₂₅: 1500.7, observed 1501.3 [M+H]⁺; **7**, calcd for C₆₄H₁₀₇N₁₉O₂₆: 1557.8, observed 1558.3 [M+H]⁺; **8**, calcd for C₆₆H₁₁₀N₂₀O₂₇: 1614.8, observed 1615.5 [M+H]⁺

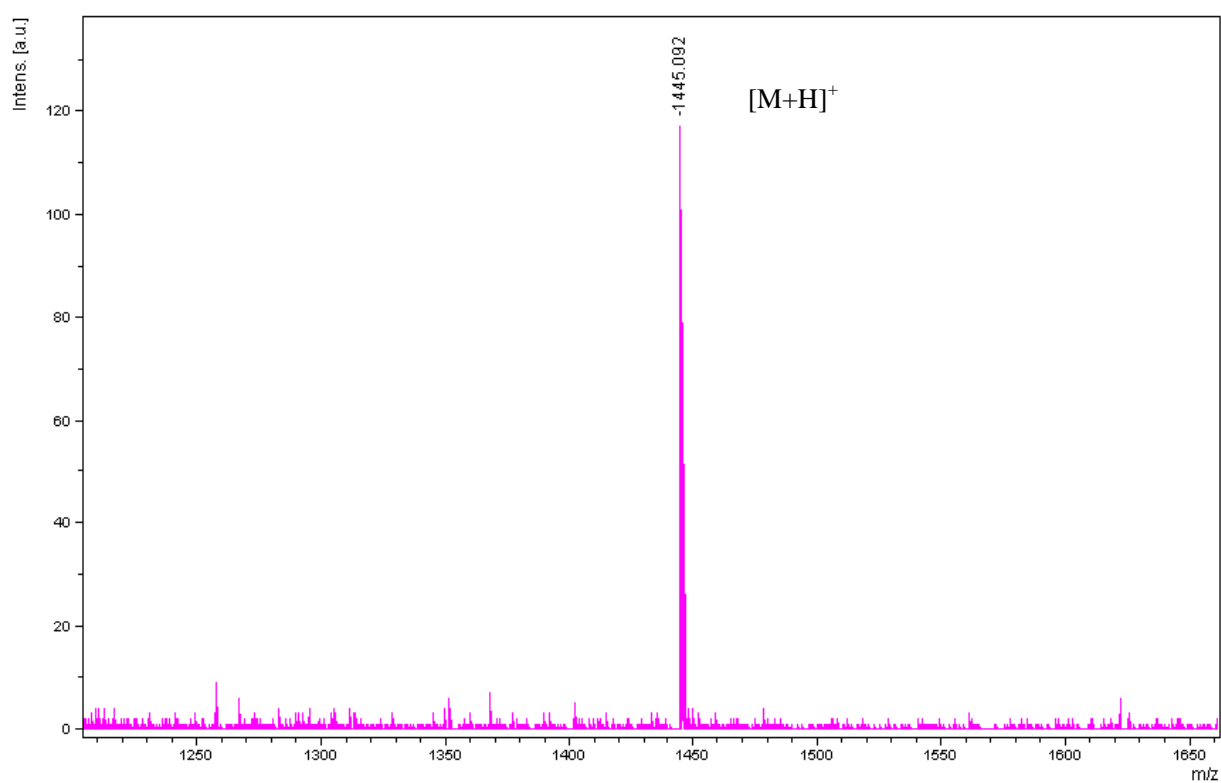


Figure 1. MALDI-TOF MS of **1**

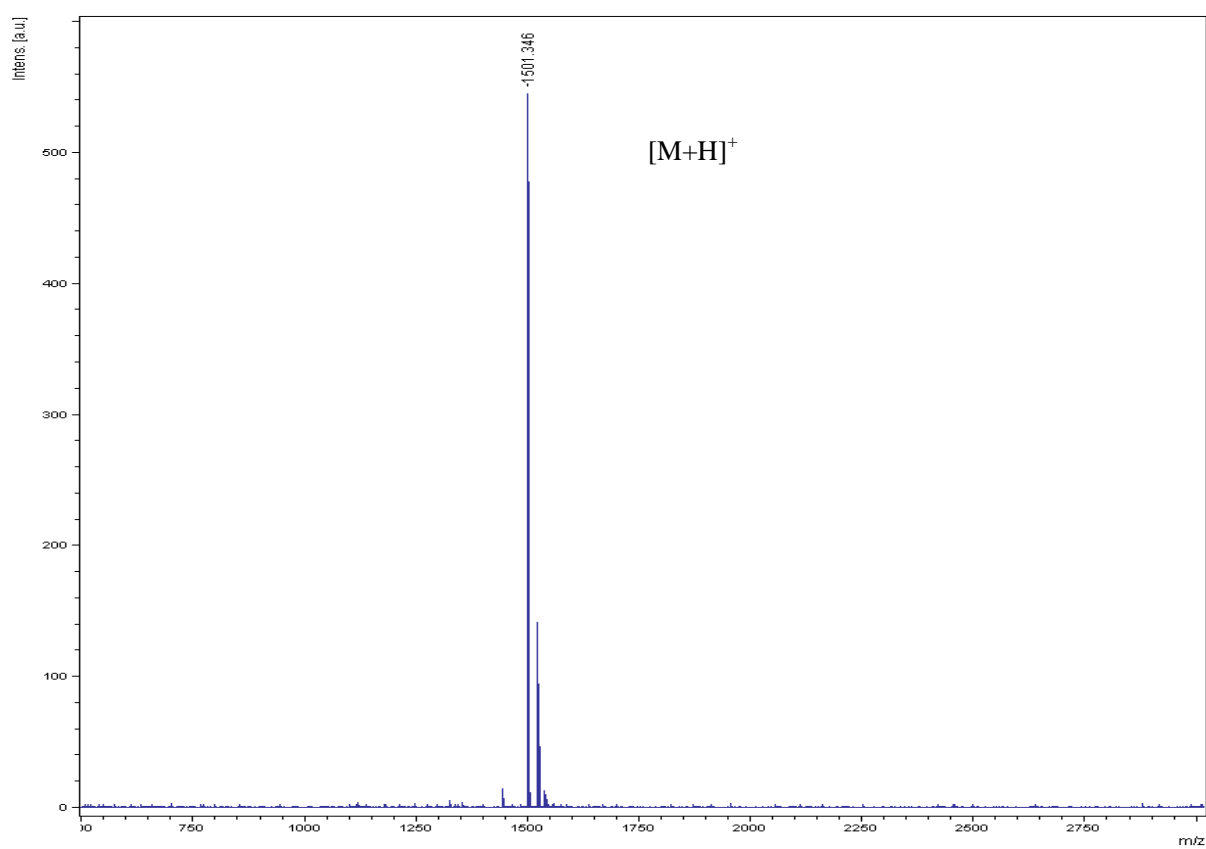


Figure 2. MALDI-TOF MS of **6**

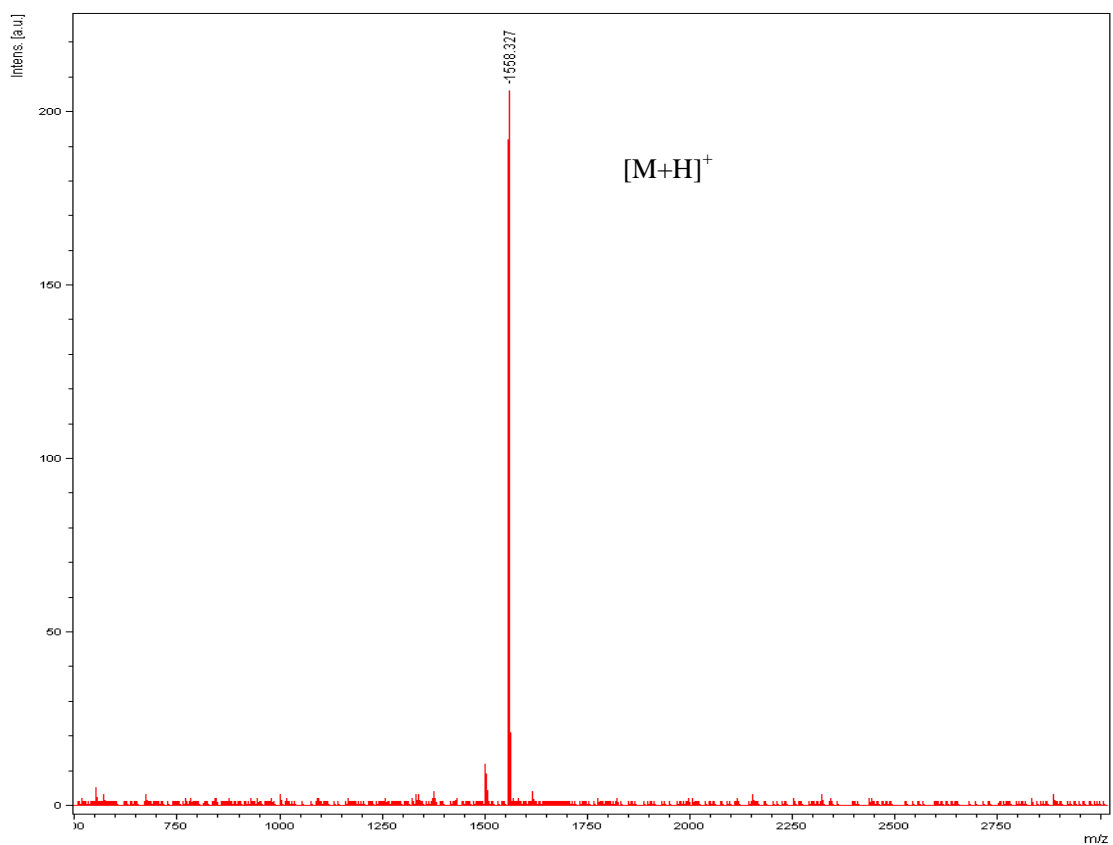


Figure 3. MALDI-TOF MS of **7**

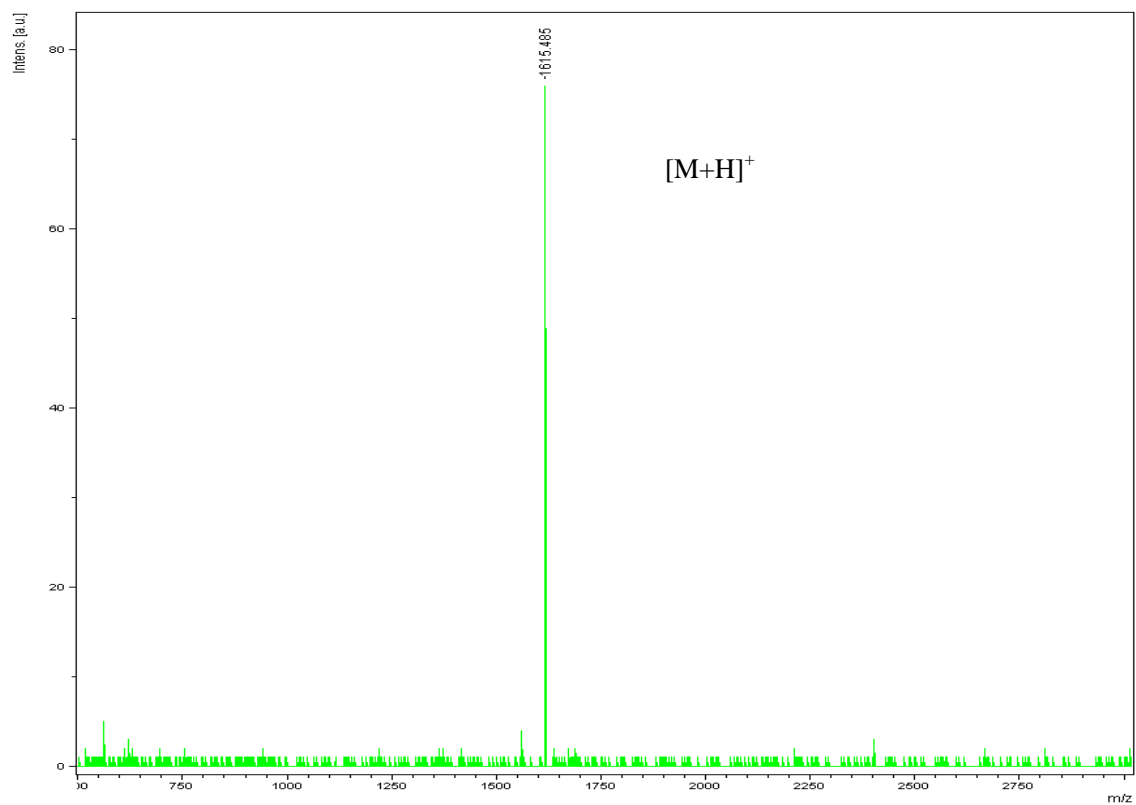


Figure 4. MALDI-TOF MS of **8**

1.2. Solid-Phase Synthesis of Glycopeptide **9**

Glycopeptide **9** was prepared according to our previously reported method (Wu, Z. M.; Guo, X. Q.; Guo, Z. W., *Chem Commun* **2010**, 46, 5773-5774). After the glycopeptide assembly on the resin was finished, the *N*-terminal Fmoc was removed by 10% of piperidine. Then, the resin was treated with 95% aq. TFA containing 2.5% Et₃SiH at rt for 2 h to release acetylated glycopeptide **13**, which was characterized with MALDI-TOF MS [Figure 5, calcd for C₁₀₂H₁₅₈N₂₀O₄₈ (m/z) 2431.1, observed 2432.3 (M + H)⁺]. Glycopeptide **13** was dissolved in MeOH, to which was added 0.1 M solution of NaOMe in MeOH to adjust the pH to *ca.* 8.0. The reaction progress was monitored by MALDI-TOF. After the reaction was finished, it was neutralized by addition of acetic acid. The solvent was removed in *vacuum*, and the residue was dissolved in water and purified by preparative RP-HPLC (20% to 50% MeCN in H₂O, both containing 0.1% TFA) to afford **9** as a white solid, which was characterized with MALDI-TOF MS [Figure 6, calcd for C₈₄H₁₄₀N₂₀O₃₉ (m/z) 2052.9, observed 2054.0 (M + H)⁺].

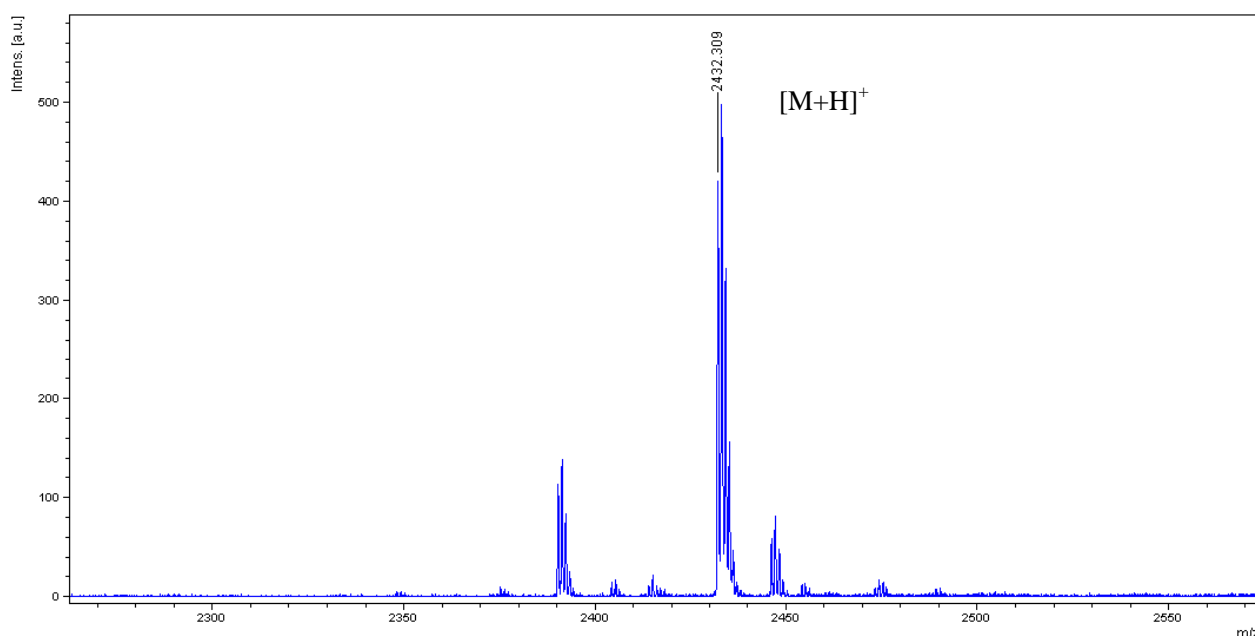


Figure 5. MALDI-TOF MS of **13**

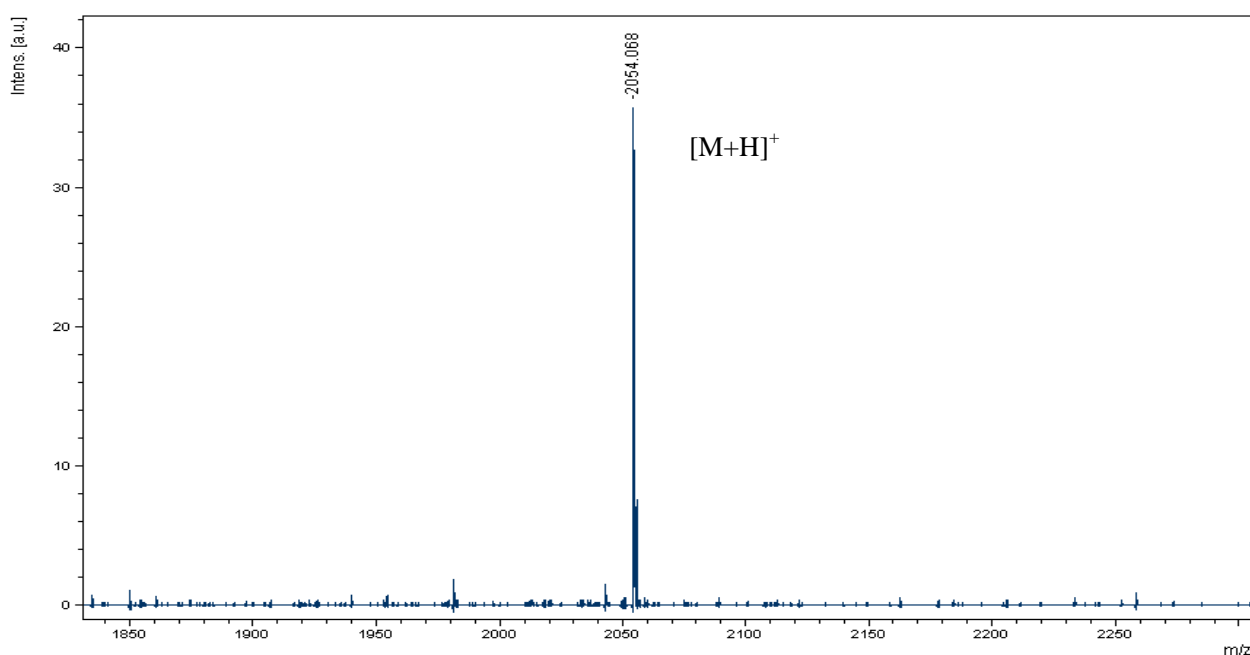
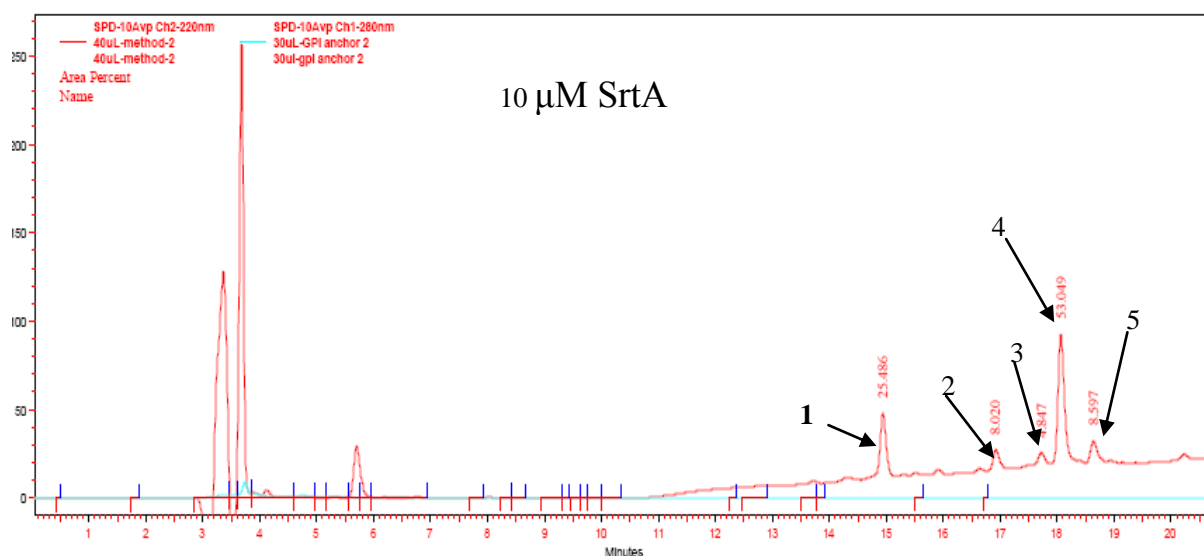


Figure 6. MALDI-TOF MS of **9**

2. SrtA-Catalyzed Peptide Oligomerization and Cyclization Reactions

2.1 SrtA-catalyzed reactions of **1** in the presence of different concentrations of SrtA

The reaction was performed in 100 μ L solution with fixed concentration of peptide **1** (0.5 mM) and different concentrations of SrtA (10, 20, 40, and 60 μ M) in 0.3 M Tris-HCl buffer (pH = 7.5) containing 0.15 M NaCl, 5 mM CaCl_2 , and 2 mM 2-mercaptoethanol. After the reaction was kept at 37 $^\circ\text{C}$ for 20 h, 20 μ L of the reaction mixture was withdrawn and quenched with the same volume of 0.1% of TFA. The aliquots were then analyzed by HPLC using a RP C18 column (Figure 7) and the fractions were analyzed by MALDI-TOF MS (Figures 11-14).



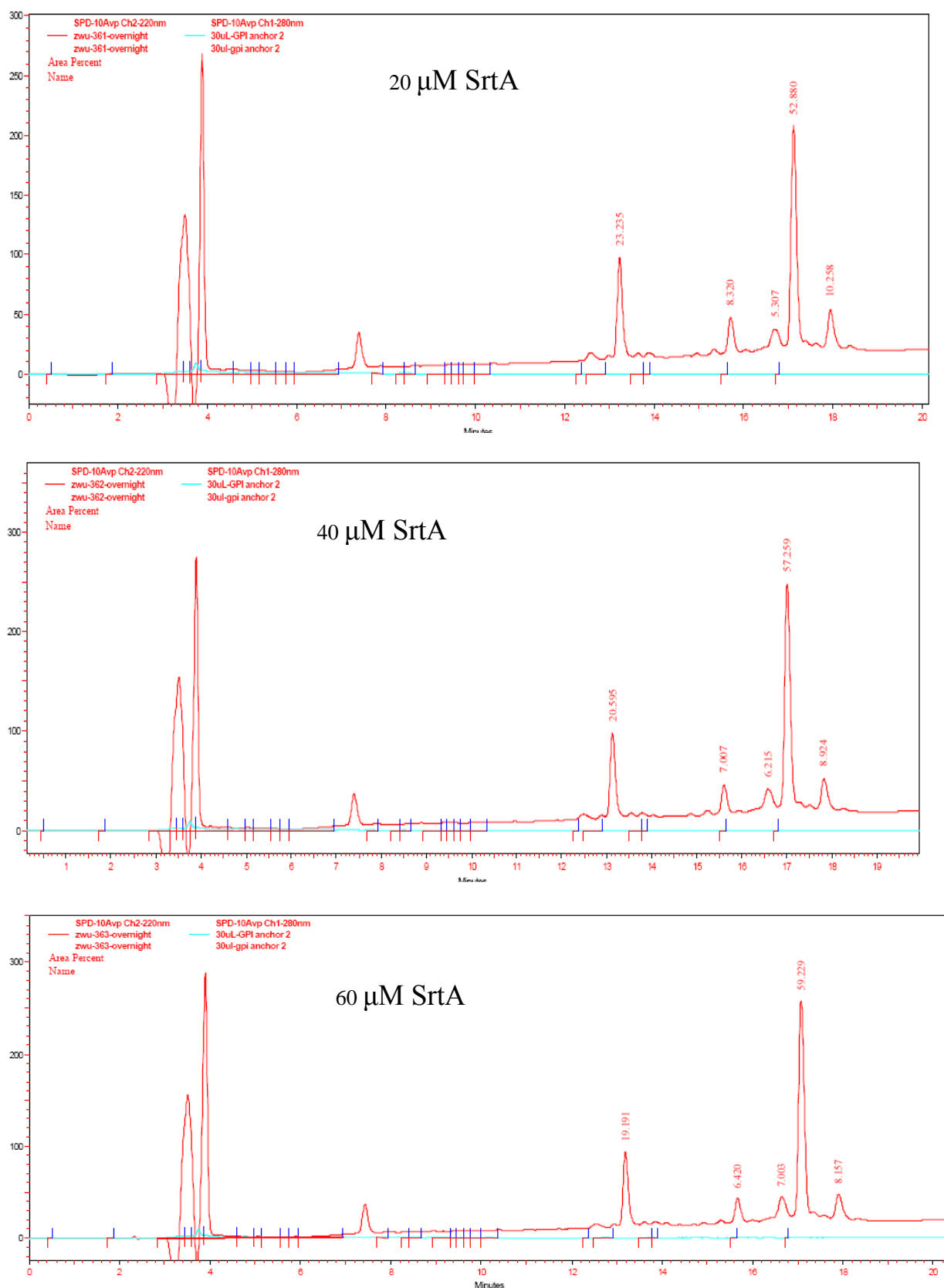
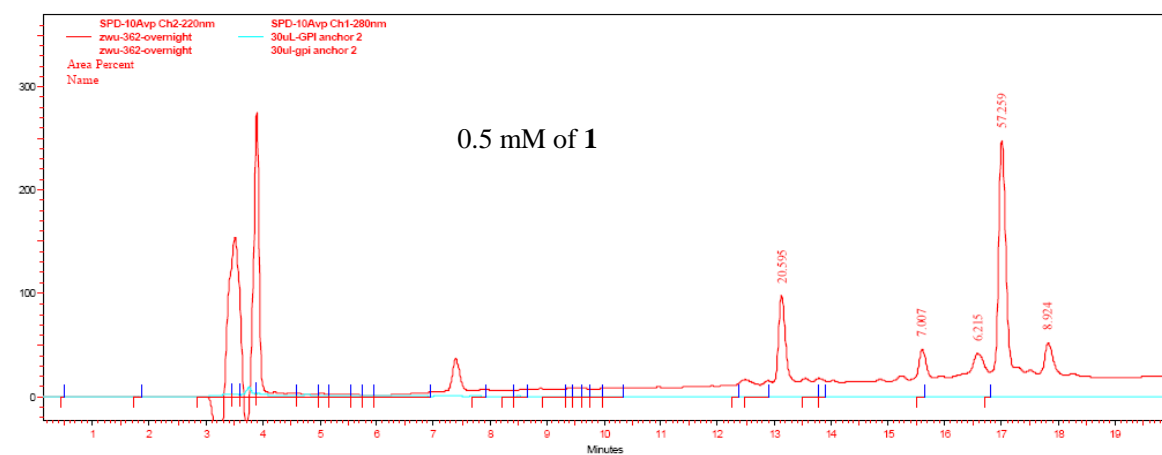
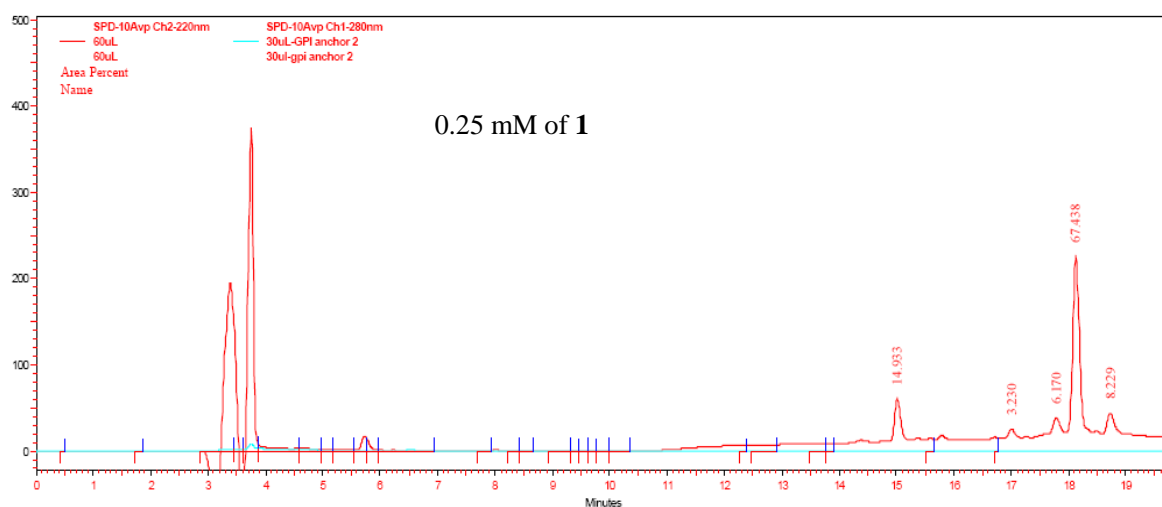
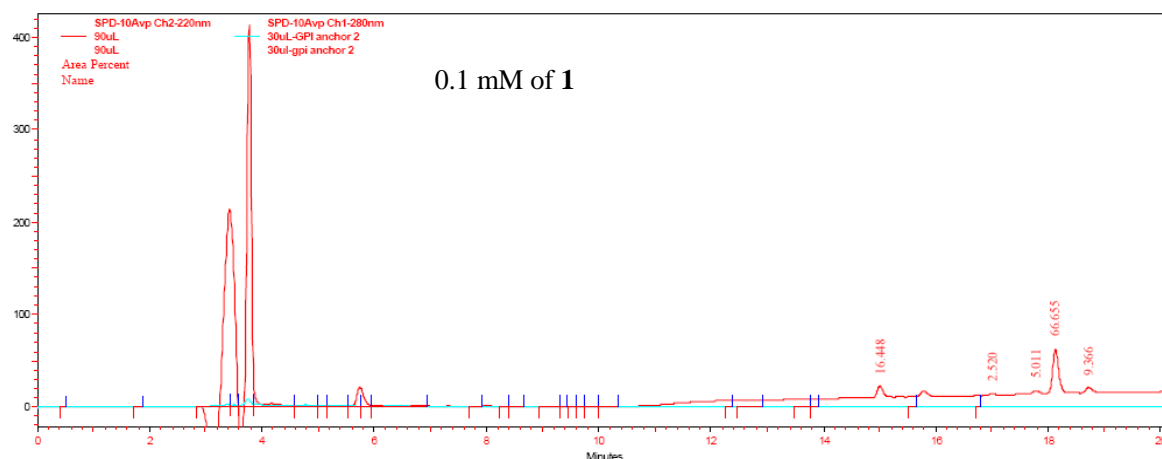


Figure 7. HPLC diagrams of the reactions of **1** in the presence of different concentrations of SrtA. Monitored with UV at 220 nm. Eluent: 10% to 40% MeCN in H₂O (both containing 0.1% TFA) in 15 min; flow rate: 1 mL/min; column: C-18 (250 x 4.6 mm).

2.2 SrtA-catalyzed reactions of different concentrations of **1**

The reaction was performed in 100 μL solution with a fixed concentration of SrtA (40 μM) and different concentrations of **1** (0.1, 0.25, 0.5, 1, 2.5, 5, and 10 mM). Reactions were carried out in 0.3 M Tris-HCl buffer (pH = 7.5) containing 0.15 M NaCl, 5 mM CaCl_2 , and 2 mM 2-mercaptoethanol. After the reaction was incubated at 37 $^\circ\text{C}$ for 20 h, 20 μL of the reaction mixture was taken and then quenched with the same volume of 0.1% of TFA. The aliquots were analyzed by HPLC using a RP C18 column (Figure 8), and the fractions were analyzed by MALDI-TOF MS (Figures 11-14).



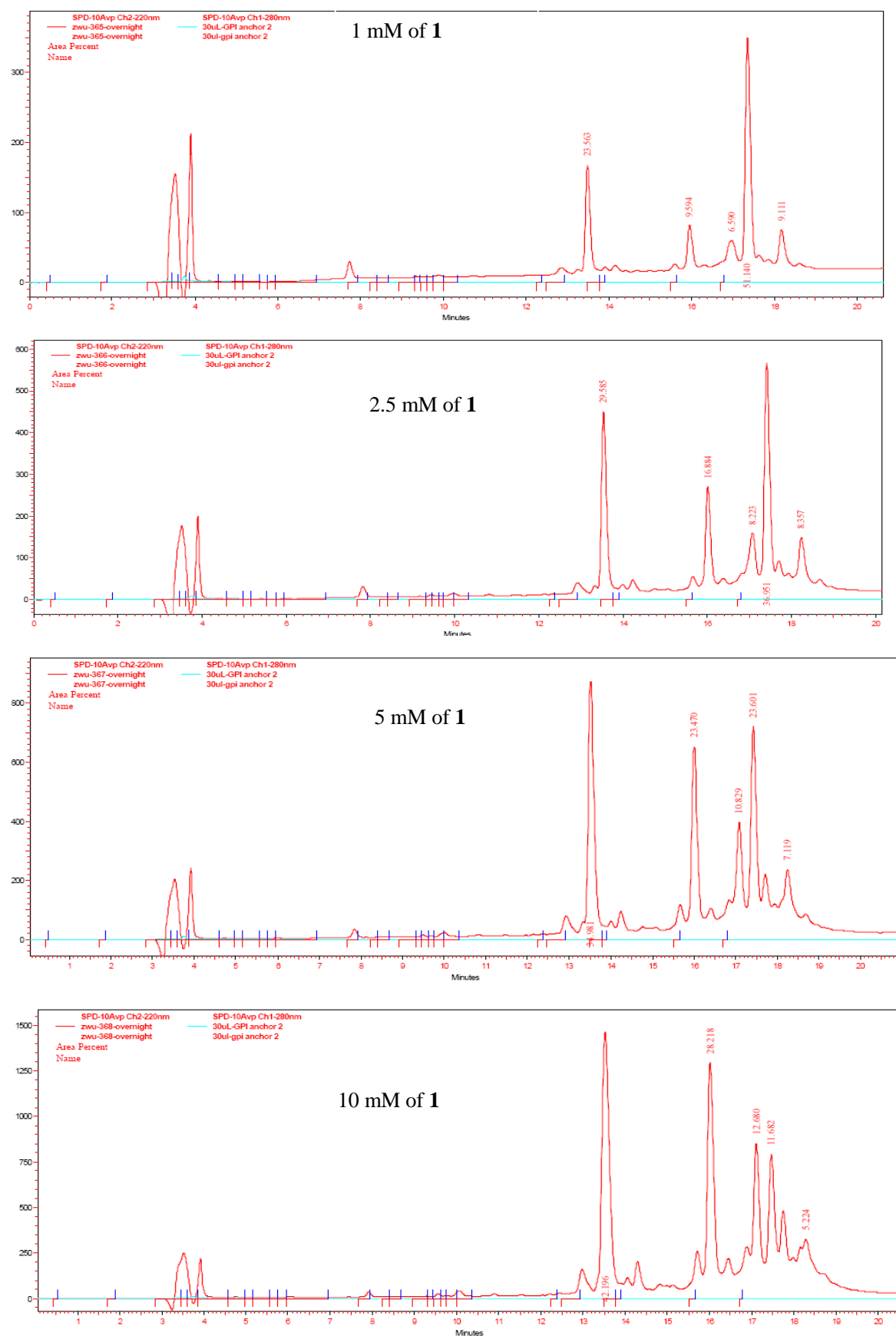
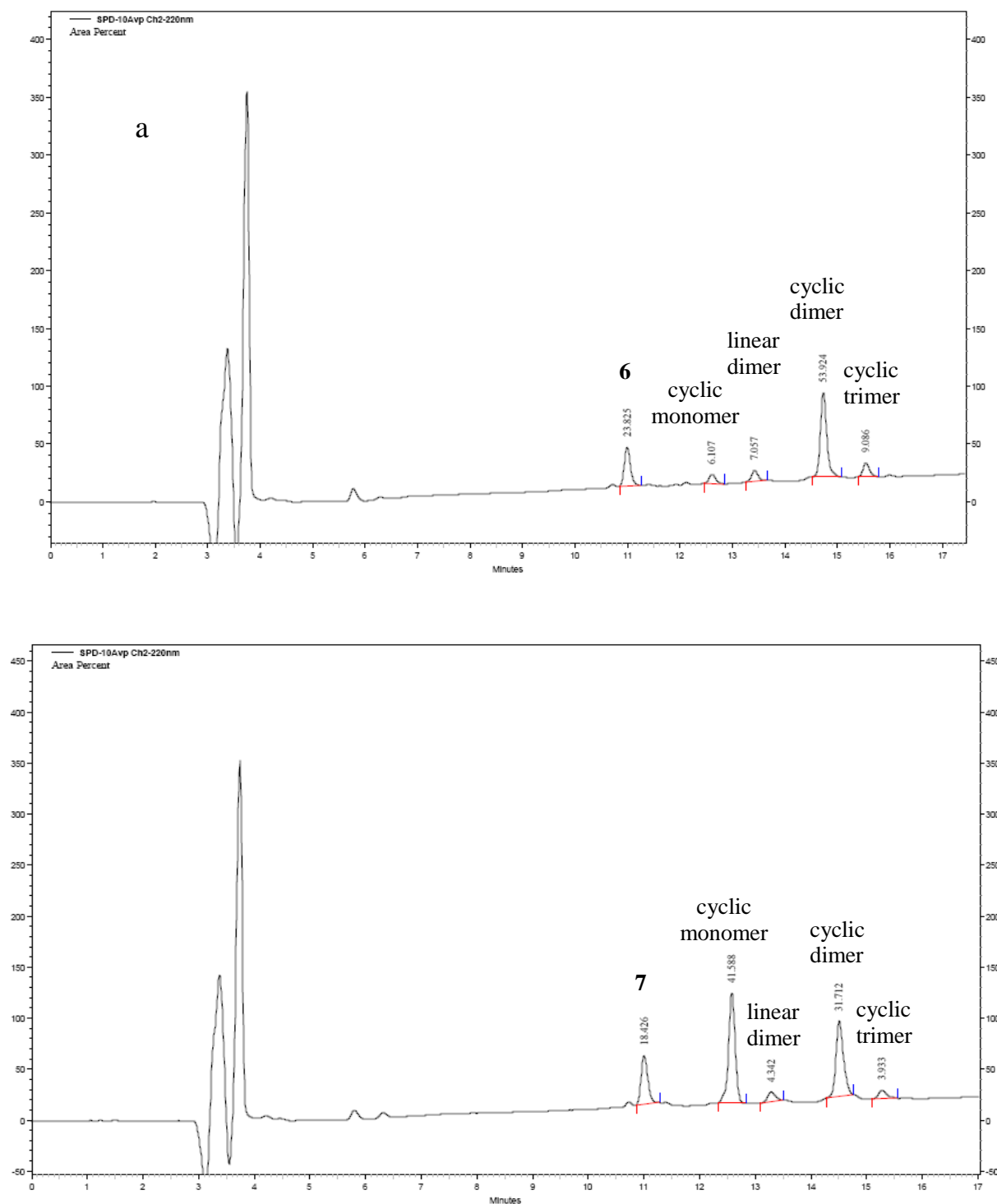


Figure 8. HPLC diagrams of the reactions of different concentrations of **1** in the presence of 40 μ M SrtA. Monitored with UV at 220 nm. Eluent: 10% to 40% MeCN in H₂O (both containing 0.1% TFA) in 15 min; flow rate: 1 mL/min; column: C-18 (250 x 4.6 mm).

2.3 SrtA-catalyzed oligomerization and cyclization reactions of **6**, **7**, and **8**

The reactions were performed in 100 μ L solutions with a fixed concentration of SrtA (40 μ M) and 0.5 mM of peptide **6**, **7** or **8** in 0.3 M Tris-HCl buffer (pH = 7.5) containing 0.15 M NaCl, 5 mM CaCl_2 , and 2 mM 2-mercaptoethanol. The reaction conditions and workup procedures were identical to that used in the reactions of **1**. The reaction aliquots were analyzed by HPLC with a RP C18 column (Figure 9), and fractions were analyzed by MALDI-TOF MS (Figures 15-24).



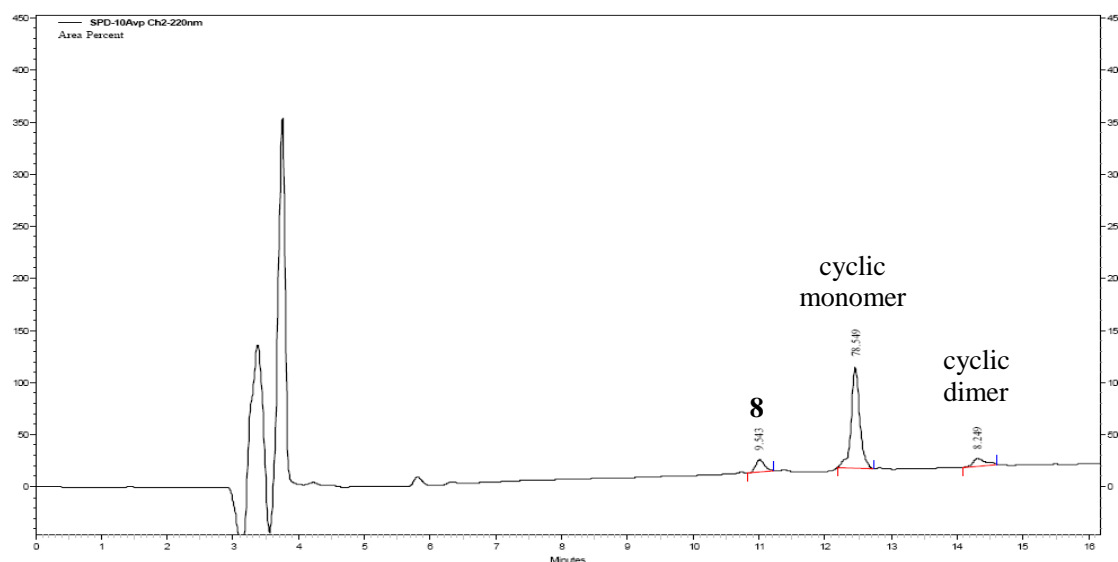


Figure 9. HPLC diagrams of reactions of **6**, **7**, and **8** in the presence of 40 μ M of SrtA. Monitored with UV at 220 nm. Eluent: 10% to 40% MeCN in H₂O (both containing 0.1% TFA) in 15 min; flow rate: 1 mL/min; column: C-18 (250 x 4.6 mm).

2.4 SrtA-catalyzed oligomerization and cyclization reactions of glycopeptide **9**

The reaction was performed at the optimized conditions with the concentrations of **9** at 0.25 mM and SrtA at 20 μ M. After incubation at 37 °C for 20 h, 20 μ L of the reaction mixture was taken and quenched with the same volume of 0.1% of TFA. The aliquots were analyzed by HPLC with a C18 column (Figure 10), and the fractions were analyzed by MALDI-TOF MS (Figures 25-27).

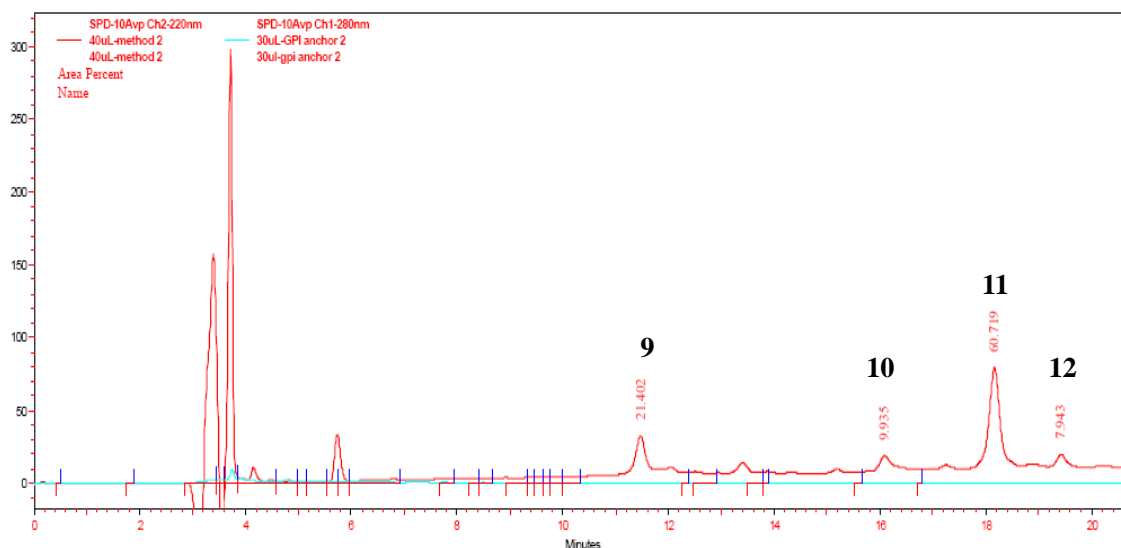


Figure 10. HPLC diagram of the reaction of **9** in the presence of 40 μ M of SrtA. Monitored with UV at 220 nm. Eluent: 10% to 40% MeCN in H₂O (both containing 0.1% TFA) in 15 min; flow rate: 1 mL/min; column: C-18 (250 x 4.6 mm).

3. MALDI-TOF MS of Cyclic Peptide and Glycopeptide Products

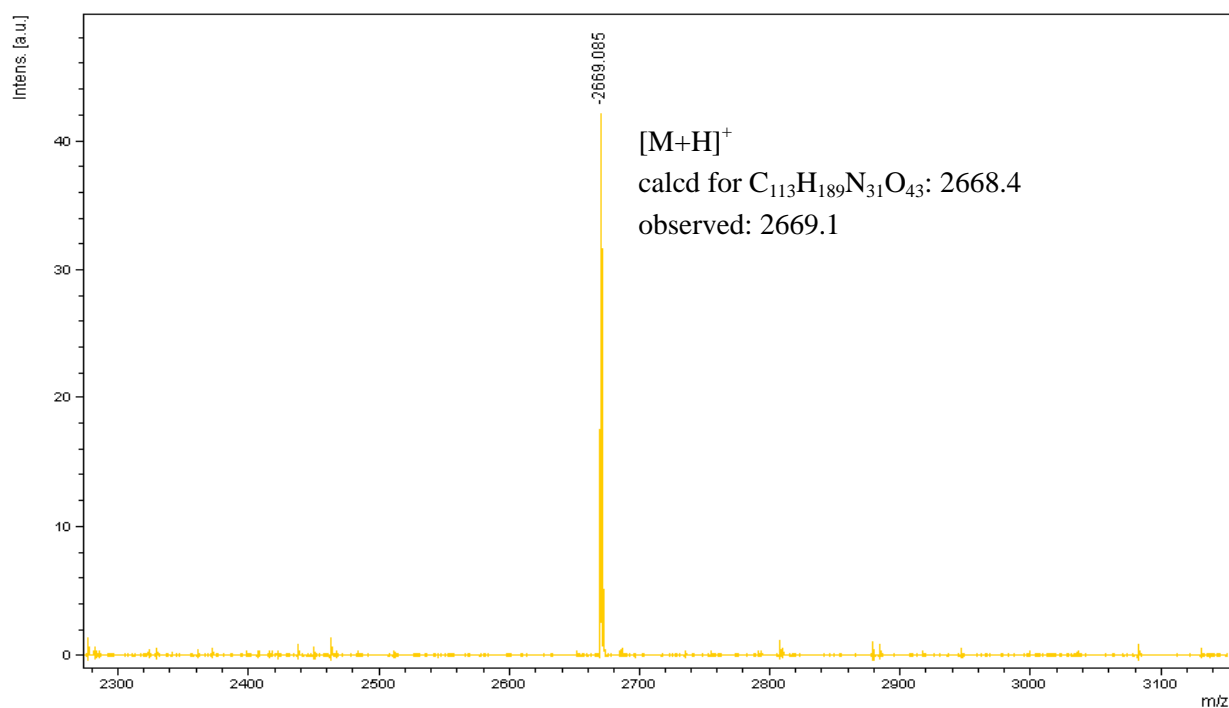


Figure 11. MALDI-TOF MS of purified **2**

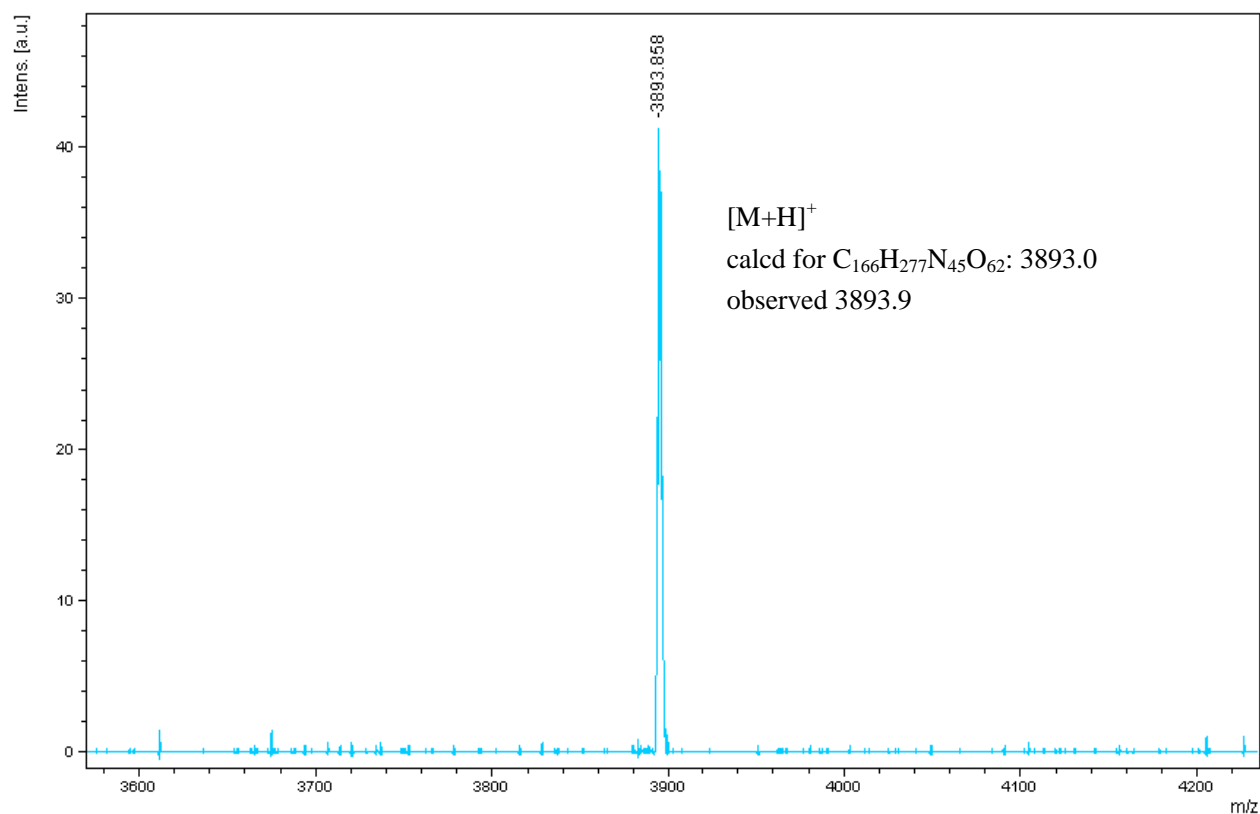


Figure 12. MALDI-TOF MS of purified **3**

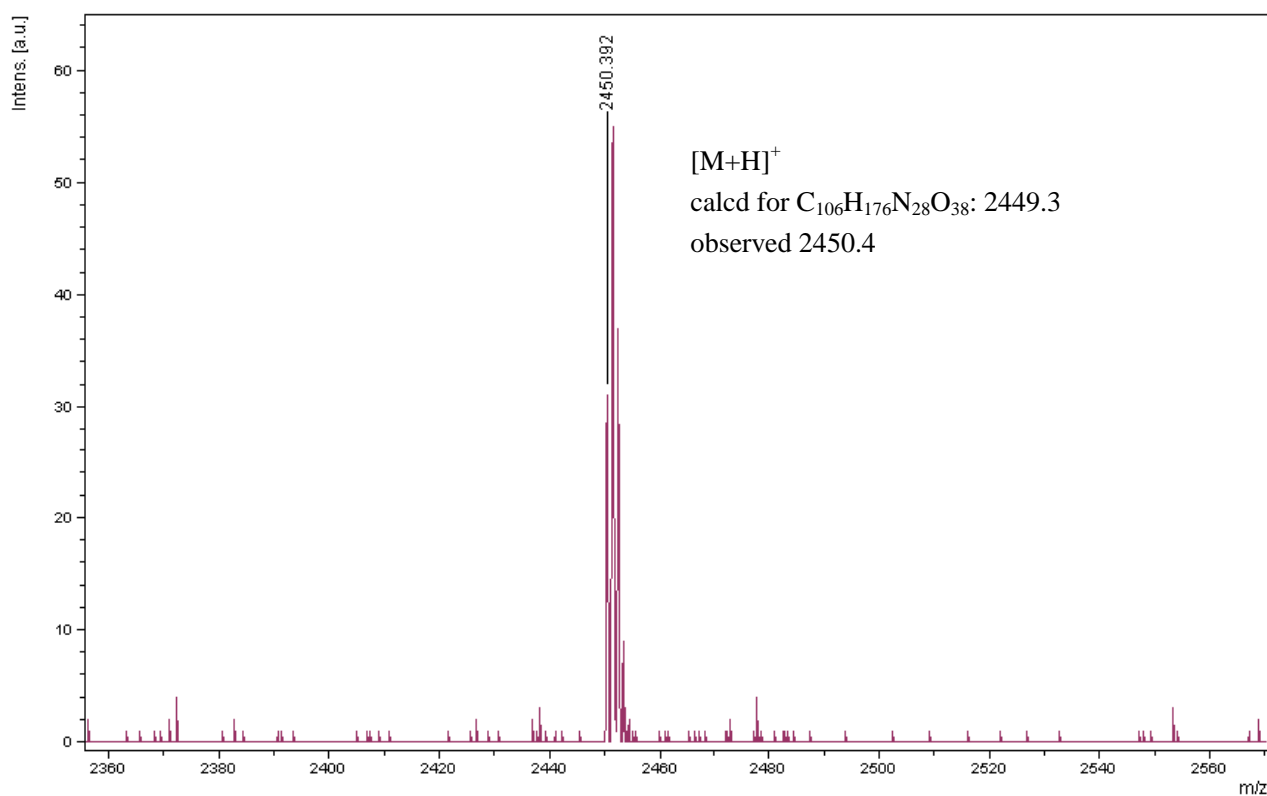


Figure 13. MALDI-TOF MS of purified **4**

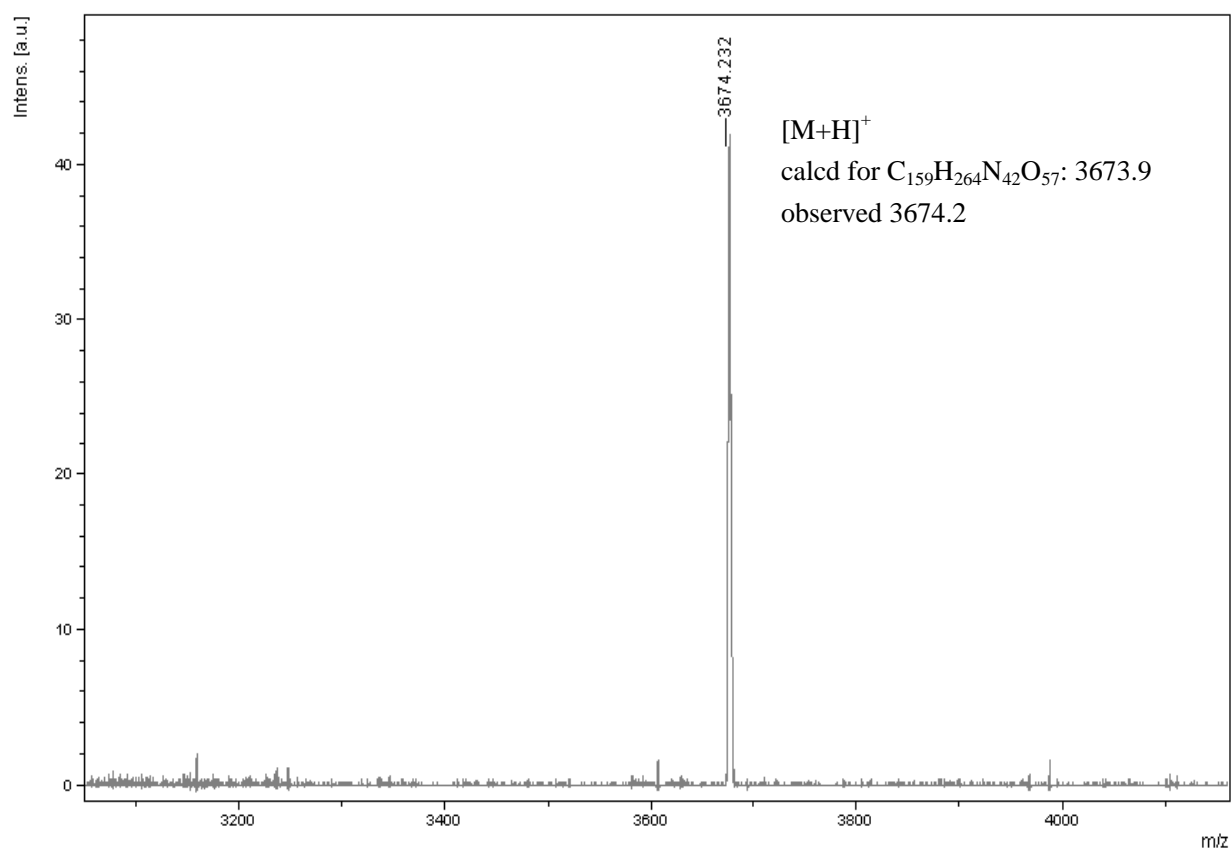


Figure 14. MALDI-TOF MS of purified **5**

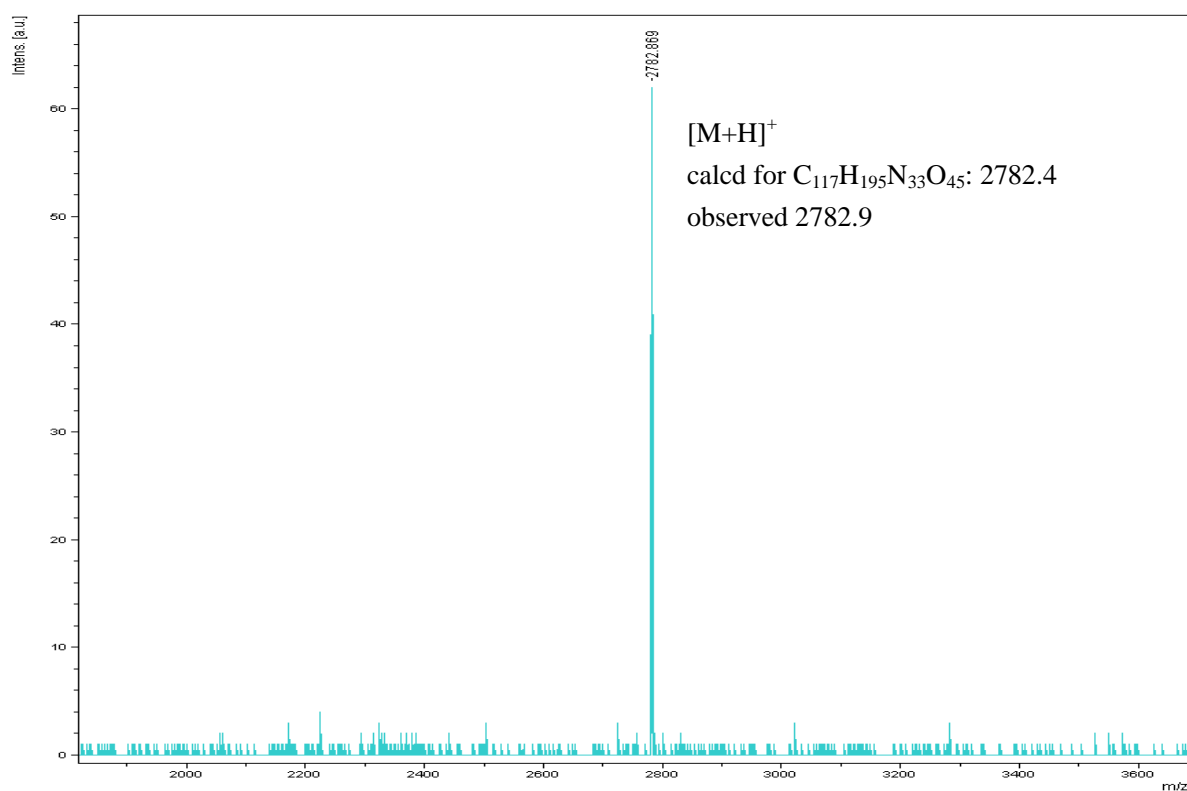


Figure 15. MALDI-TOF MS of purified linear dimer of **6**

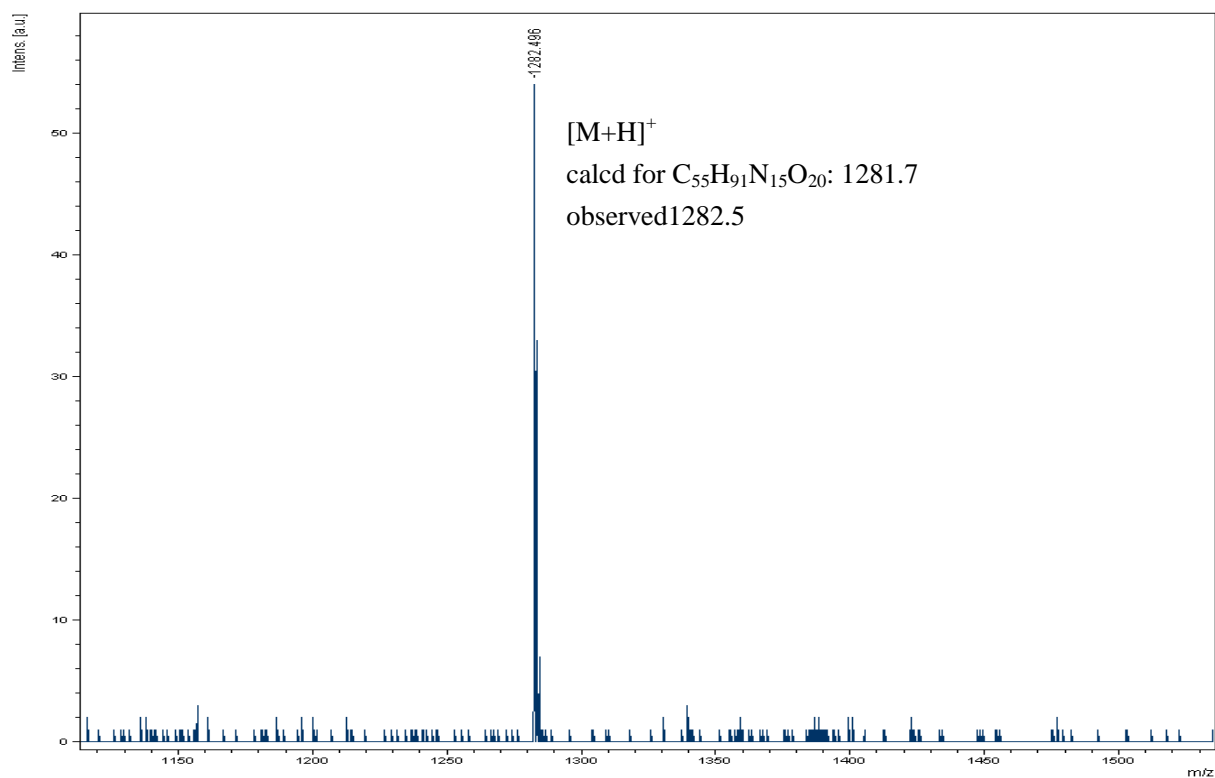


Figure 16. MALDI-TOF MS of purified cyclic monomer of **6**

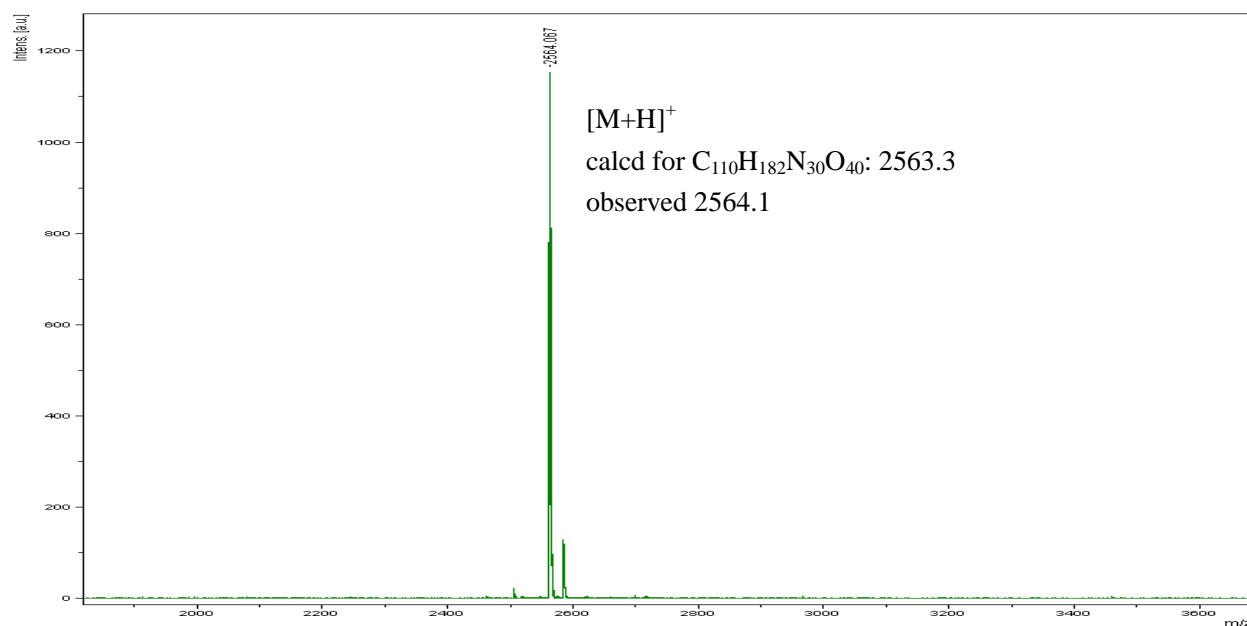


Figure 17. MALDI-TOF MS of purified cyclic dimer of **6**

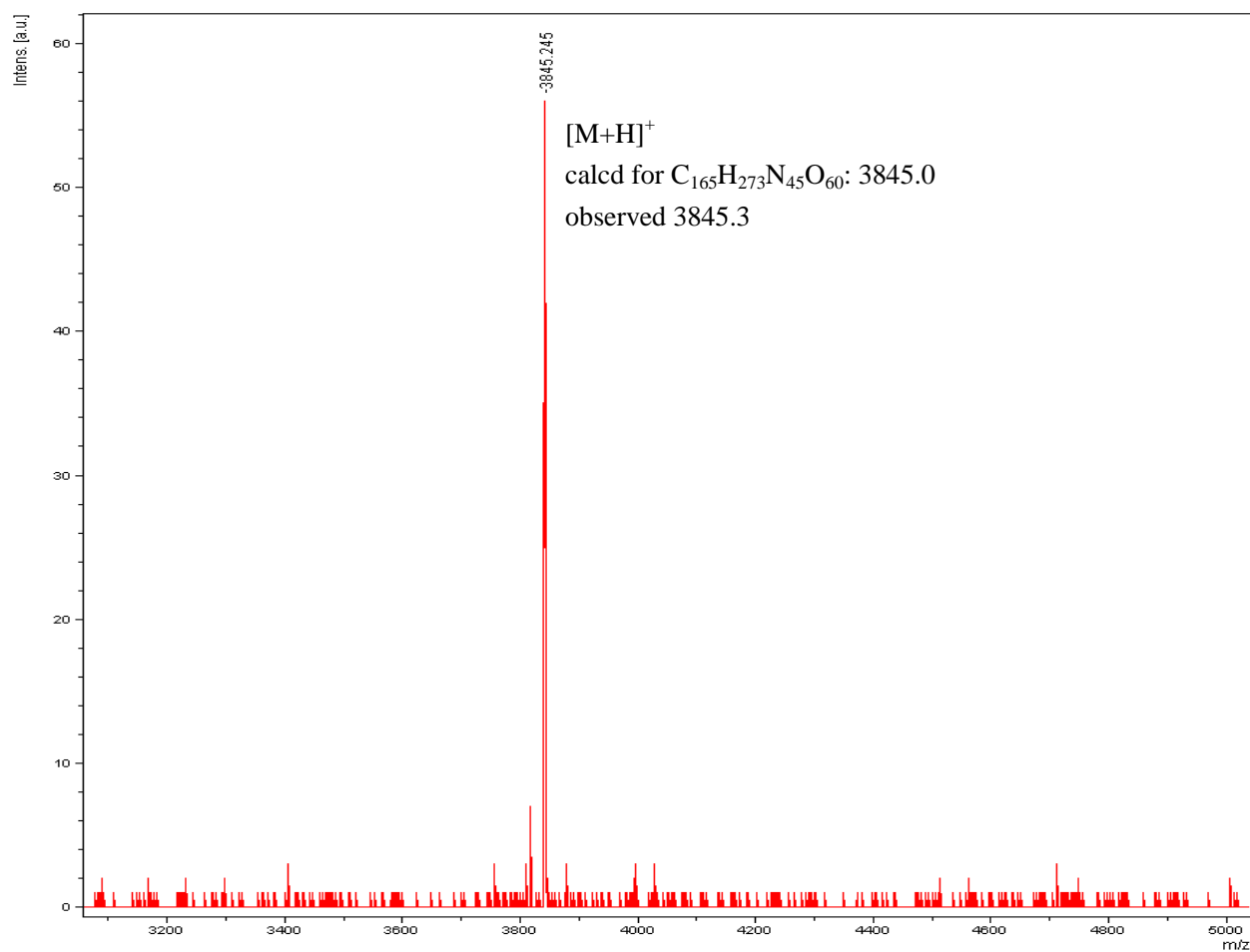


Figure 18. MALDI-TOF MS of purified cyclic trimer of **6**

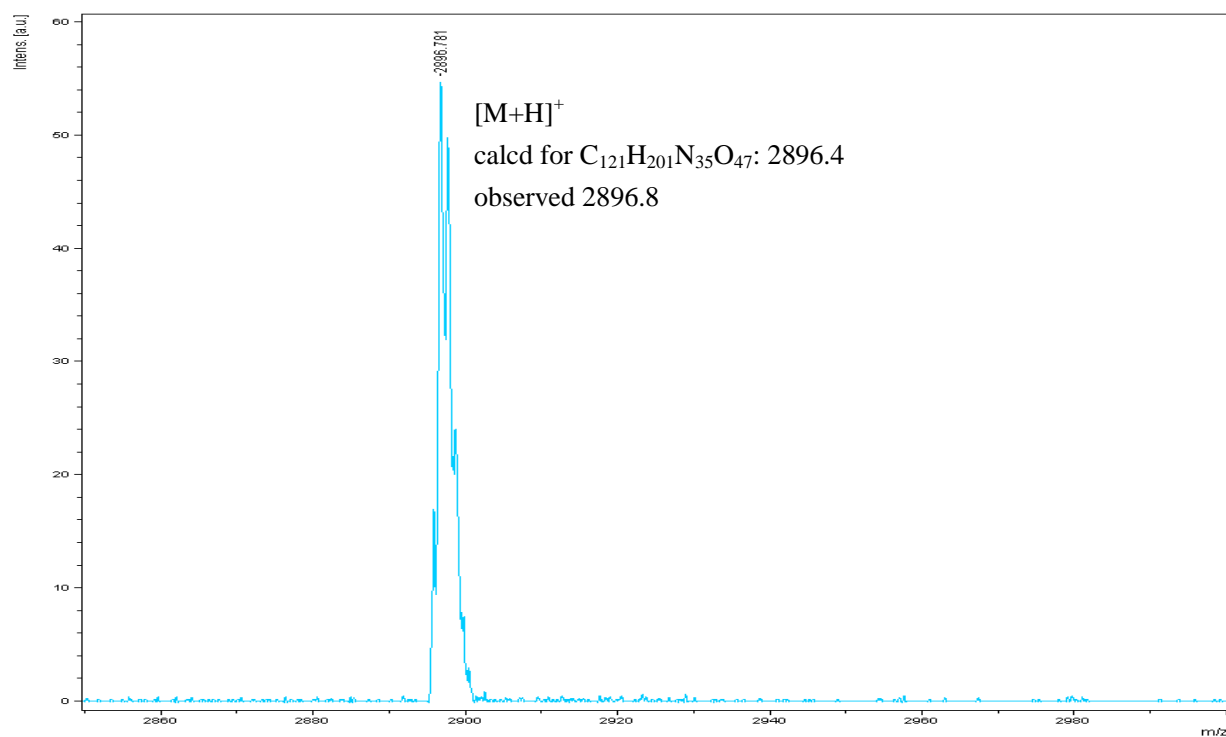


Figure 19. MALDI-TOF MS of purified linear dimer of **7**

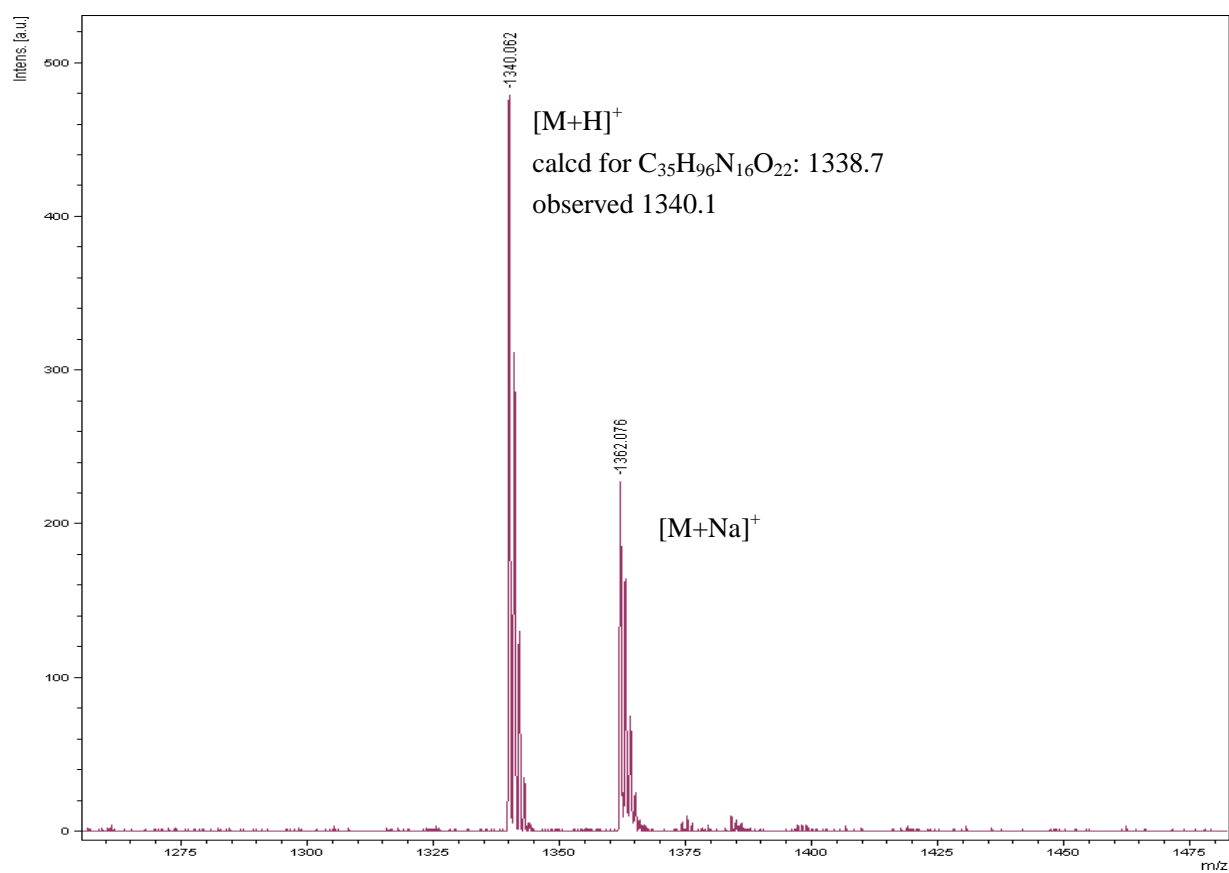


Figure 20. MALDI-TOF MS of purified cyclic monomer of **7**

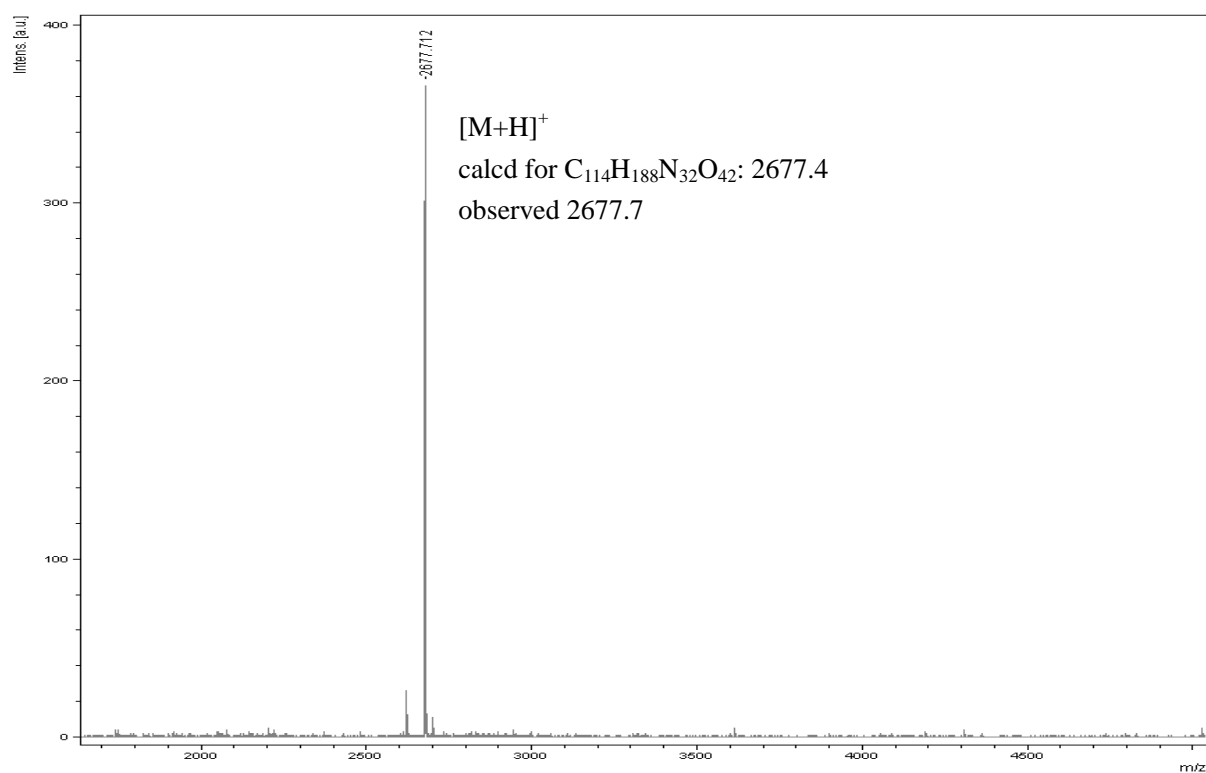


Figure 21. MALDI-TOF MS of purified cyclic dimer of **7**

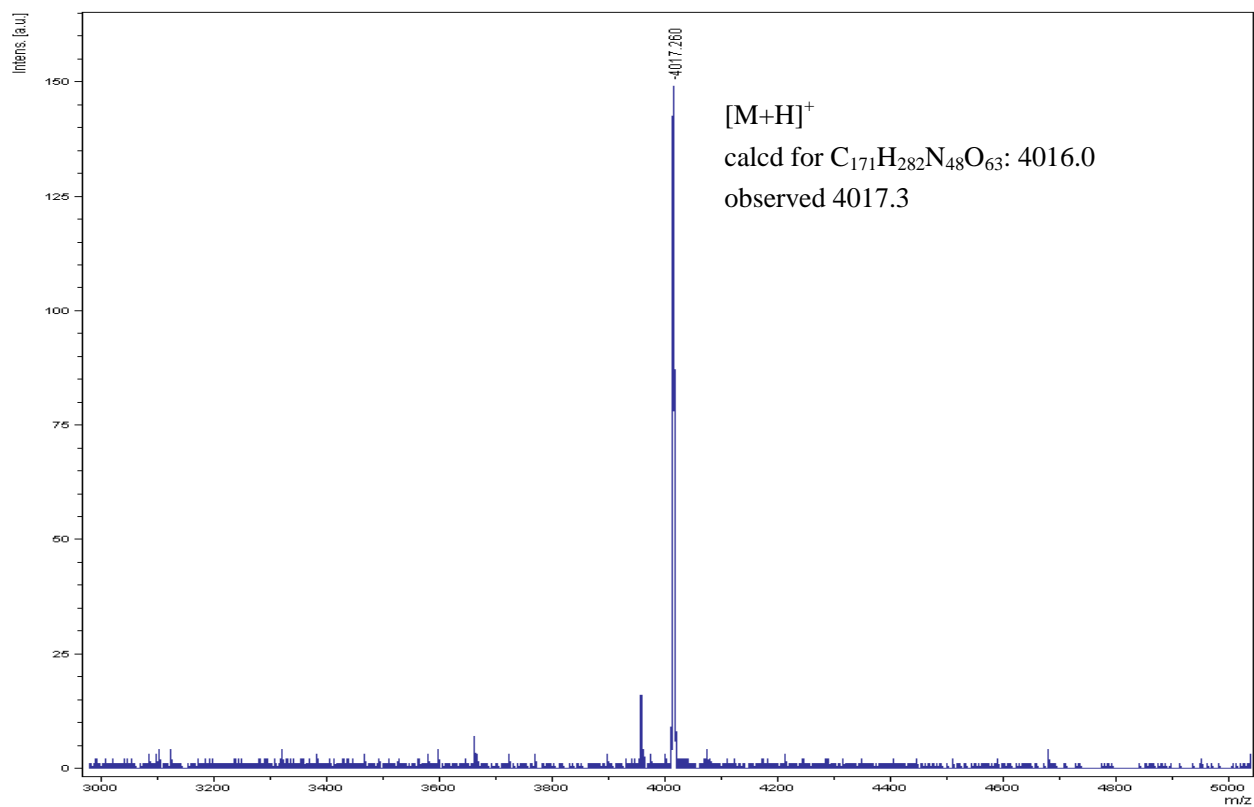


Figure 22. MALDI-TOF MS of purified cyclic trimer of **7**

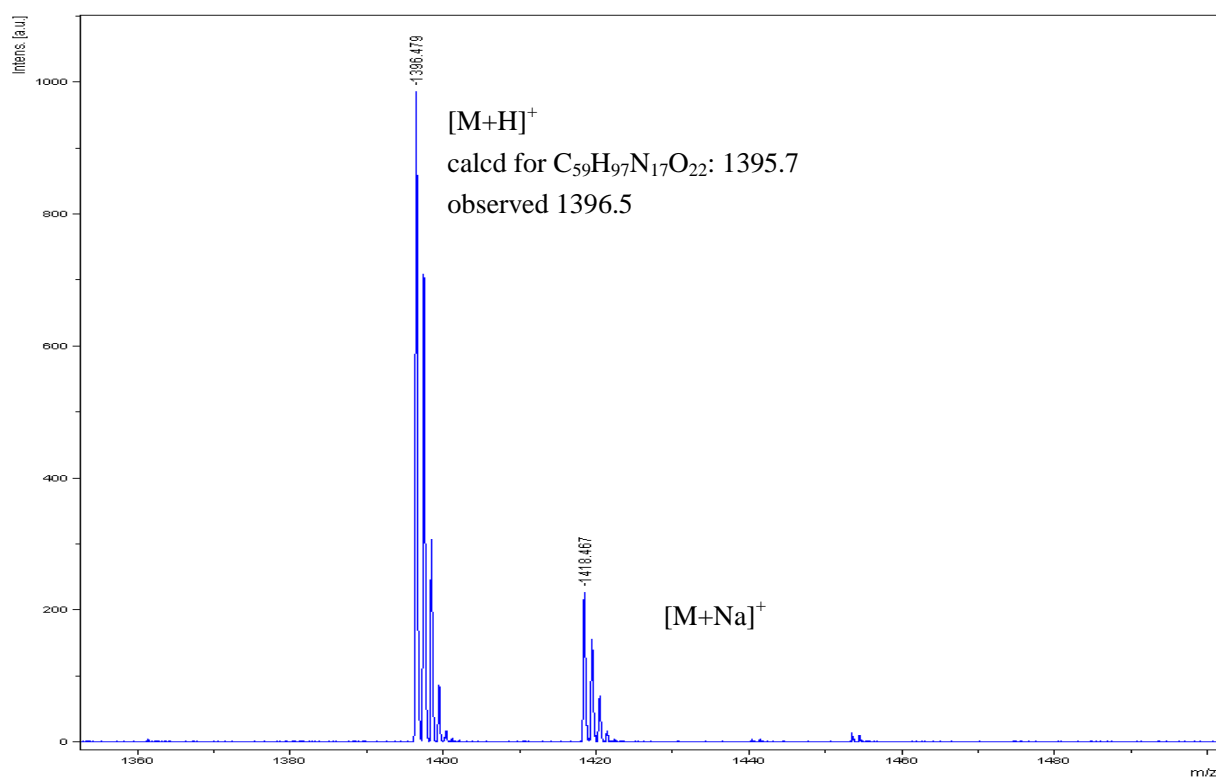


Figure 23. MALDI-TOF MS of purified cyclic monomer of **8**

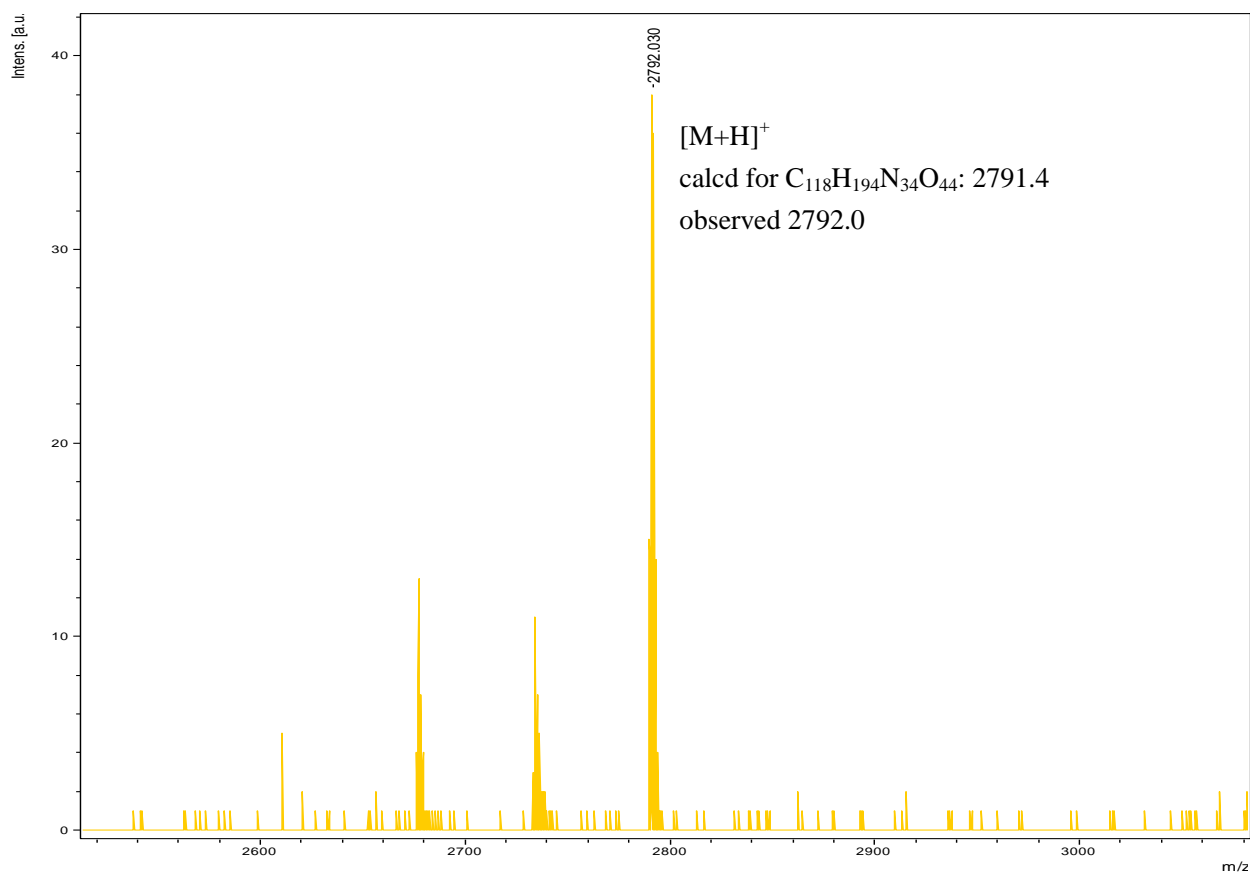


Figure 24. MALDI-TOF MS of purified cyclic dimer of **8**

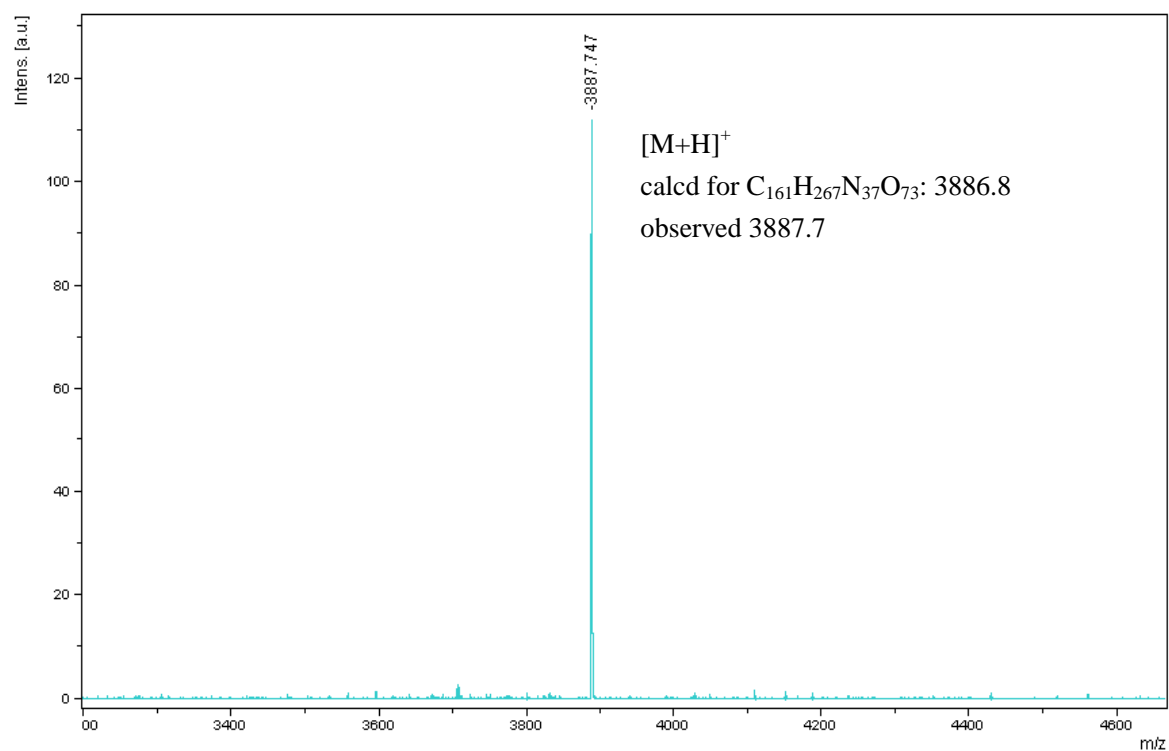


Figure 25. MALDI-TOF MS of purified **10**

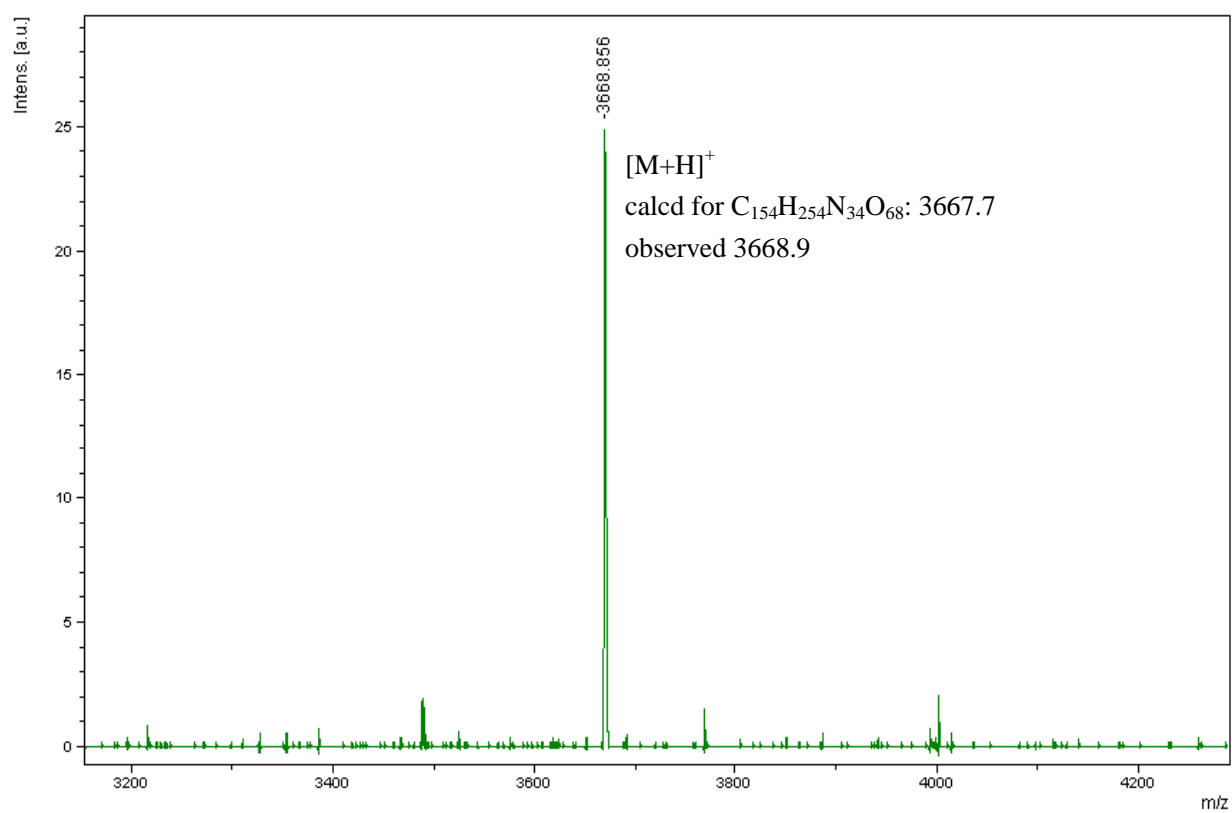


Figure 26. MALDI-TOF MS of purified **11**

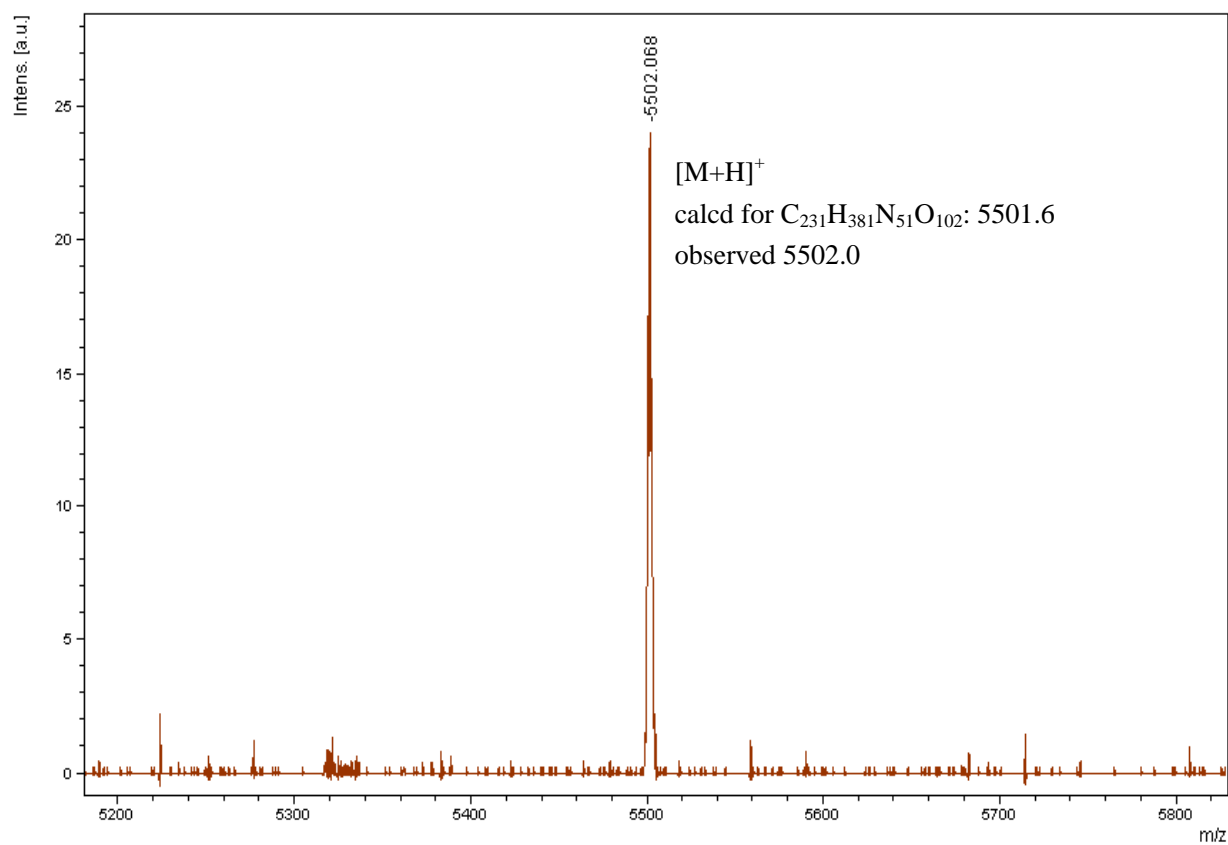


Figure 27. MALDI-TOF MS of purified **12**