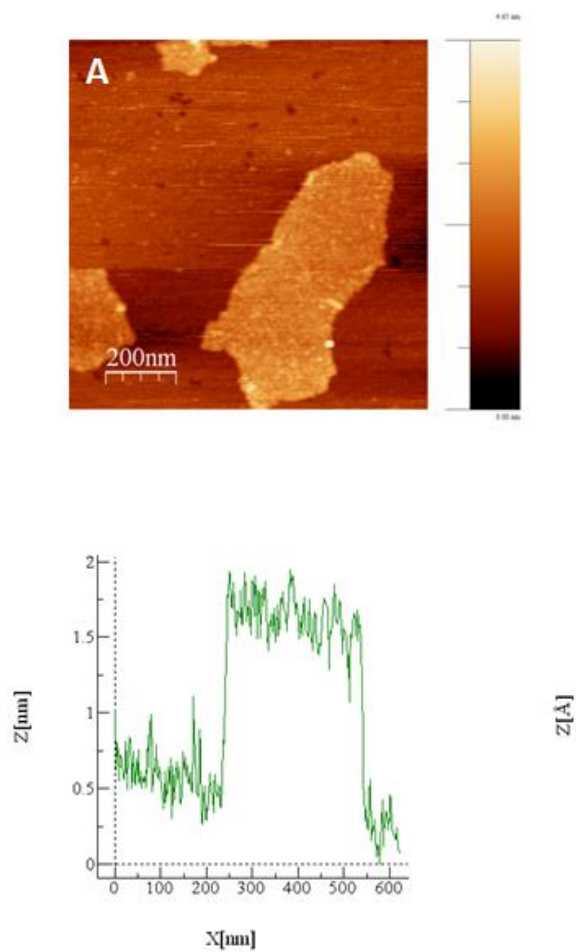


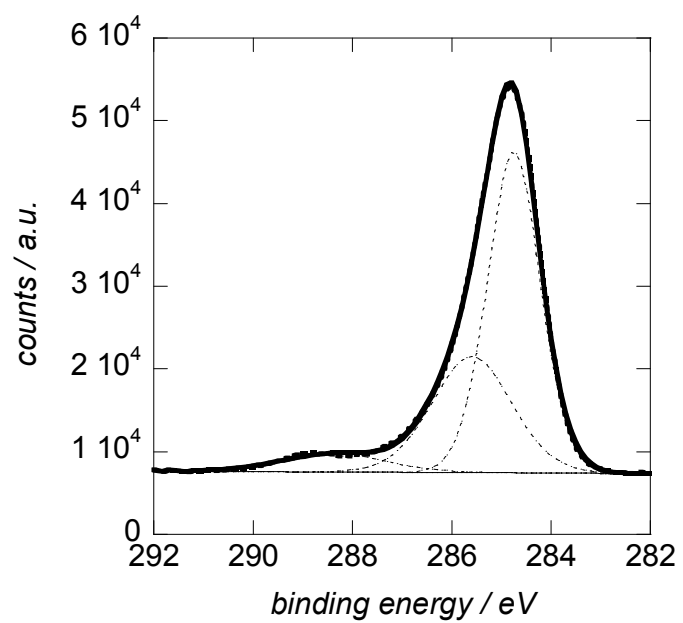
## Supporting Information

### Preparation of graphene/tetrathiafulvalene nanocomposite switchable surfaces

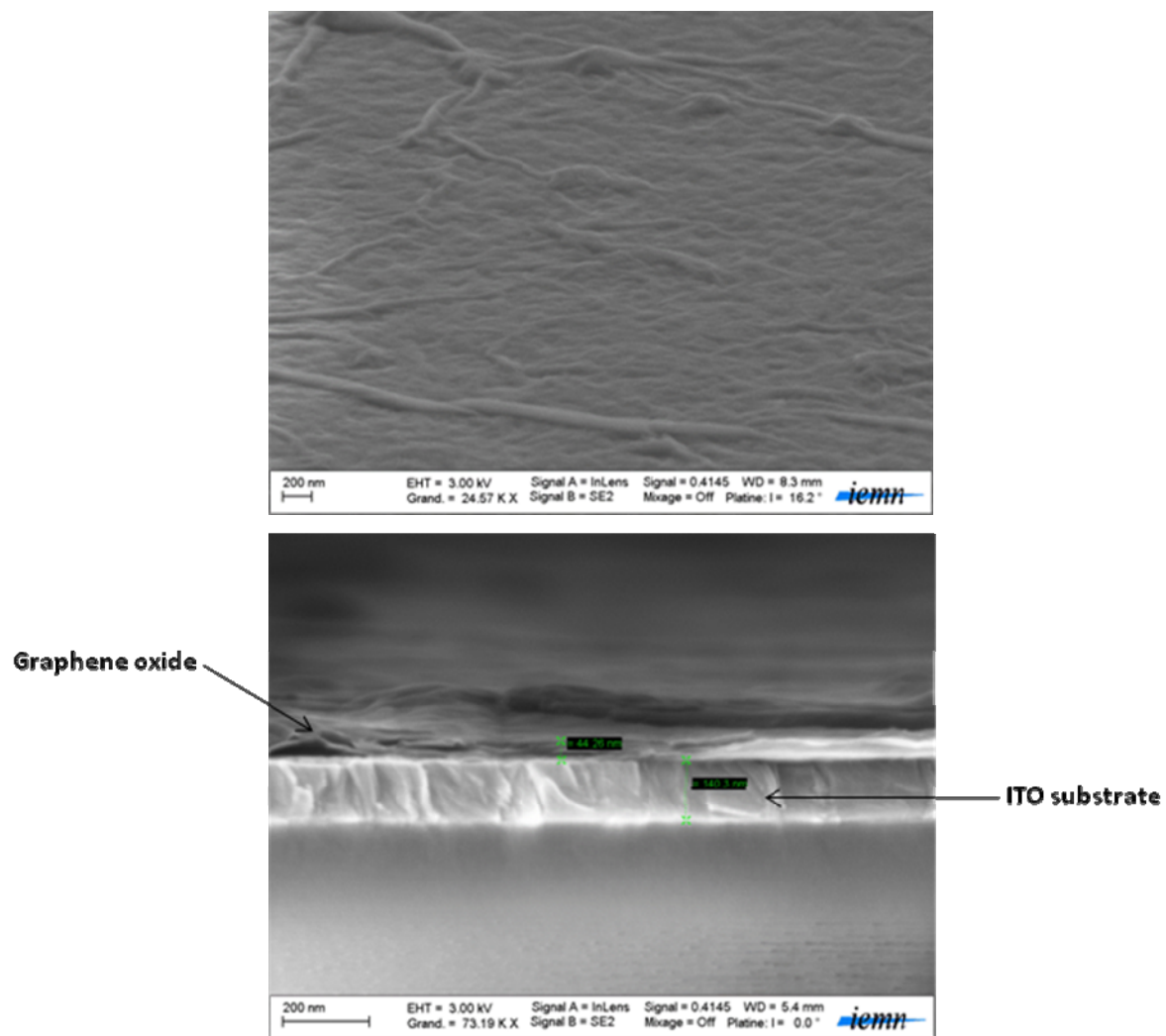
Izabela Kaminska, Manash R. Das, Joanna Niedziolka-Jonsson, Patrice Woisel, Marcin Opallo, Sabine Szunerits and Rabah Boukherroub



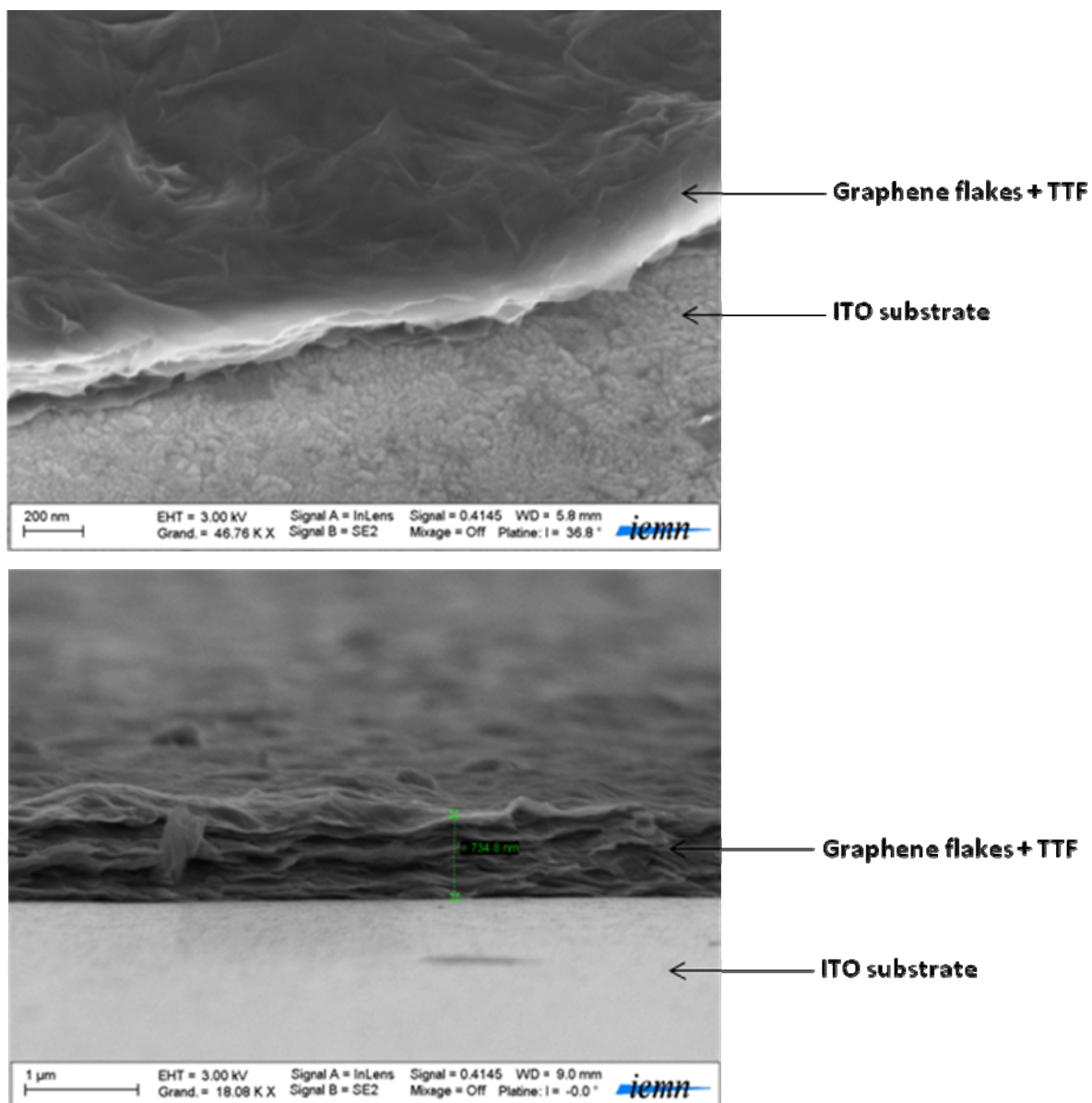
**Figure S1.** Tapping-mode AFM images of graphene oxide (GO) deposited on mica.



**Figure S2.** XPS core level spectrum of hydrazine modified GO



**Figure S3.** Scanning electron microscopy images of GO deposited on ITO by drop casting. The thickness of the GO film is about 44 nm.



**Figure S4.** Scanning electron microscopy images of a graphene/TTF film deposited on ITO by drop casting. The thickness of the GO film is about 735 nm.