

# Organocatalytic asymmetric synthesis of 3-difluoroalkyl 3-hydroxyoxindoles

Yun-Lin Liu<sup>a</sup> and Jian Zhou<sup>\*ab</sup>

<sup>a</sup> Shanghai Key Laboratory of Green Chemistry and Chemical Processes, Department of Chemistry, East China Normal University, 3663N Zhongshan Road, Shanghai 200062, China, *E-mail: jzhou@chem.ecnu.edu.cn*

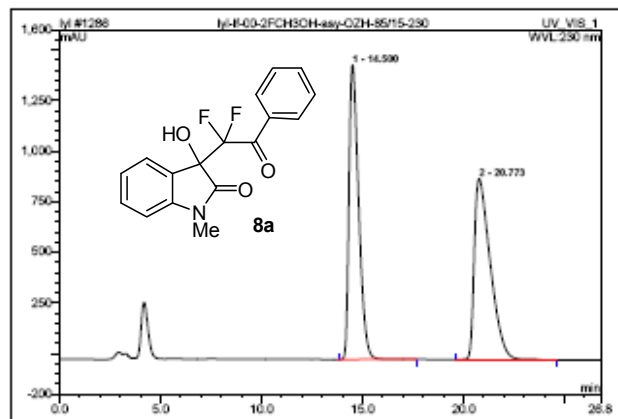
<sup>b</sup> State Key Laboratory of Elemento-organic Chemistry, Nankai University, Tianjin 300071, P. R. China.

## Supporting Information (Part III)

Content	Page
HPLC spectra of product 8a-s and 13-16	2-24

Operator: dell Timebase: U-3000 Sequence: lyl Page 1-1  
 2011-6-20 7:43

1286 lyl-lf-00-2FCH3OH-asy-OZH-85/15-230			
Sample Name:	lyl-lf-00-2FCH3OH-asy-OZH-85/15-230	Injection Volume:	20.0
Vial Number:	999	Channel:	UV_VIS_1
Sample Type:	standard	Wavelength:	290
Control Program:	Liu Yunlin	Bandwidth:	n.a.
Quantif. Method:	lyl	Dilution Factor:	1.0000
Recording Time:	2011-3-28 11:21	Sample Weight:	1.0000
Run Time (min):	28.78	Sample Amount:	1.0000



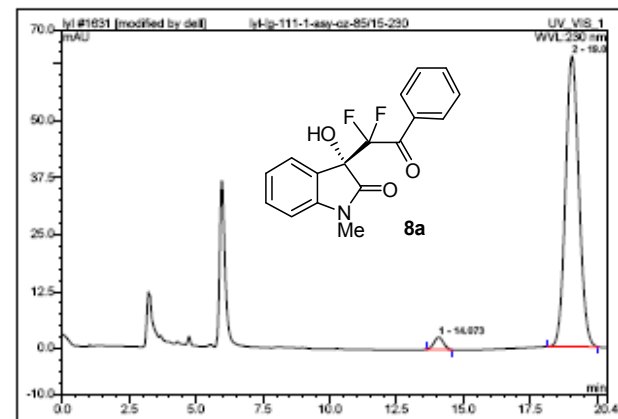
No.	Ret. Time min	Peak Name	Height mAU	Area mAU*min	Rel. Area %	Amount	Type
1	14.50	n.a.	1455.076	807.929	49.74	n.a.	BMB*
2	20.77	n.a.	892.168	816.228	50.26	n.a.	BMB*
Total:			2347.244	1624.157	100.00	0.000	

default/integration

Chromeleon (c) Dionex 1996-2006  
 Version 6.80 SR8a Build 2643 (158225)

Operator: dell Timebase: U-3000 Sequence: lyl Page 1-1  
 2011-6-20 7:42

1631 lyl-lg-111-1-asy-oz-85/15-230			
Sample Name:	lyl-lg-111-1-asy-oz-85/15-230	Injection Volume:	20.0
Vial Number:	999	Channel:	UV_VIS_1
Sample Type:	standard	Wavelength:	290
Control Program:	Liu Yunlin	Bandwidth:	n.a.
Quantif. Method:	lyl	Dilution Factor:	1.0000
Recording Time:	2011-8-6 16:51	Sample Weight:	1.0000
Run Time (min):	20.35	Sample Amount:	1.0000



No.	Ret. Time min	Peak Name	Height mAU	Area mAU*min	Rel. Area %	Amount	Type
1	14.07	n.a.	2.595	1.109	2.90	n.a.	BMB*
2	19.06	n.a.	63.828	37.110	97.10	n.a.	BMB*
Total:			66.523	38.219	100.00	0.000	

default/integration

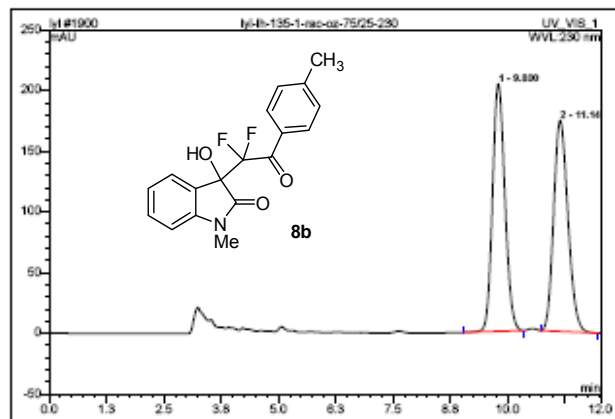
Chromeleon (c) Dionex 1996-2006  
 Version 6.80 SR8a Build 2643 (158225)

Operator: dell Timebase: U-3000 Sequence: yl

Page 1-1  
 2011-7-19 10:45

1900 Iyl-Ih-135-1-*rac*-oz-75/25-230

Sample Name:	Iyl-Ih-135-1- <i>rac</i> -oz-75/25-230	Injection Volume:	20.0
Vial Number:	898	Channel:	UV_V18_1
Sample Type:	standard	Wavelength:	290
Control Program:	Liu Yunlin	Bandwidth:	n.a.
Quantif. Method:	Iyl	Dilution Factor:	1.0000
Recording Time:	2011-7-19 22:28	Sample Weight:	1.0000
Run Time (min):	12.03	Sample Amount:	1.0000



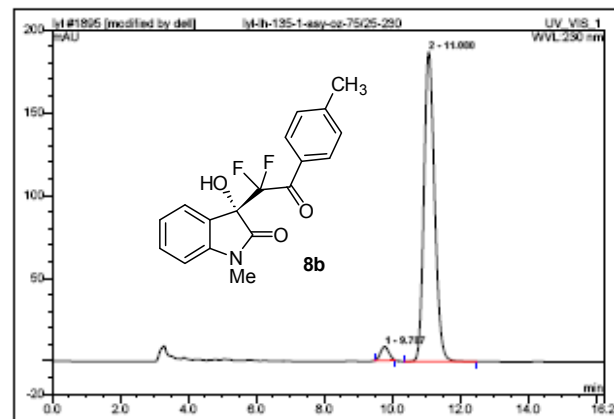
No.	Ret. Time min	Peak Name	Height mAU	Area mAU*min	Rel. Area %	Amount	Type
1	9.80	n.a.	203.862	63.683	50.38	n.a.	BMB
2	11.15	n.a.	173.642	62.732	49.62	n.a.	BMB
Total:			377.504	126.415	100.00	0.000	

Operator: dell Timebase: U-3000 Sequence: yl

Page 1-1  
 2011-7-19 10:44

1895 Iyl-Ih-135-1-*asy*-oz-75/25-230

Sample Name:	Iyl-Ih-135-1- <i>asy</i> -oz-75/25-230	Injection Volume:	20.0
Vial Number:	898	Channel:	UV_V18_1
Sample Type:	standard	Wavelength:	290
Control Program:	Liu Yunlin	Bandwidth:	n.a.
Quantif. Method:	Iyl	Dilution Factor:	1.0000
Recording Time:	2011-7-19 21:08	Sample Weight:	1.0000
Run Time (min):	16.22	Sample Amount:	1.0000



No.	Ret. Time min	Peak Name	Height mAU	Area mAU*min	Rel. Area %	Amount	Type
1	9.79	n.a.	8.342	2.381	3.40	n.a.	BMB*
2	11.08	n.a.	186.915	67.698	96.60	n.a.	BMB*
Total:			195.256	70.069	100.00	0.000	

default/integration

Chromeleon (c) Dionex 1996-2006  
 Version 6.80 (SR6a Build 2643 (158225))

default/integration

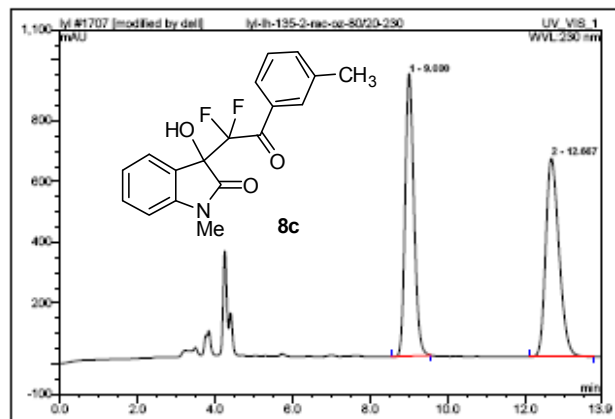
Chromeleon (c) Dionex 1996-2006  
 Version 6.80 (SR6a Build 2643 (158225))

Operator: dell Timebase: U-3000 Sequence: yl

Page 1-1  
 2011-6-20 5:14

1707 Iyl-Ih-135-2-*rac*-oz-80/20-230

Sample Name:	Iyl-Ih-135-2- <i>rac</i> -oz-80/20-230	Injection Volume:	20.0
Vial Number:	898	Channel:	UV_VIS_1
Sample Type:	standard	Wavelength:	290
Control Program:	Liu Yunlin	Bandwidth:	n.a.
Quantif. Method:	Iyl	Dilution Factor:	1.0000
Recording Time:	2011-6-17 22:33	Sample Weight:	1.0000
Run Time (min):	13.83	Sample Amount:	1.0000



No.	Ret. Time min	Peak Name	Height mAU	Area mAU*min	Rel. Area %	Amount	Type
1	9.00	n.a.	930.114	244.807	48.57	n.a.	BMB*
2	12.67	n.a.	653.210	259.208	51.43	n.a.	BMB
Total:			1583.324	504.015	100.00	0.000	

default/integration

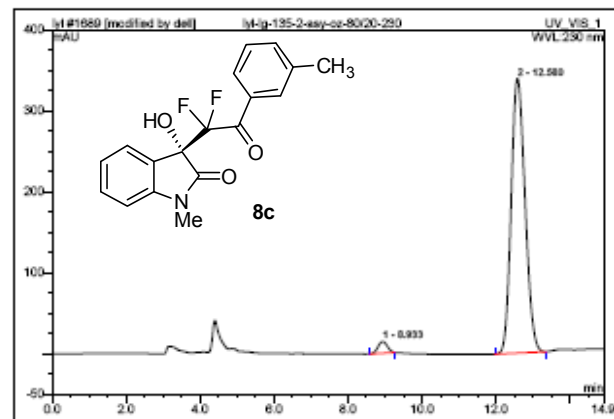
Chromeleon (c) Dionex 1996-2006  
 Version 6.80 (SR8a Build 2643 (158225))

Operator: dell Timebase: U-3000 Sequence: yl

Page 1-1  
 2011-6-20 5:09

1689 Iyl-Ig-135-2-*asy*-oz-80/20-230

Sample Name:	Iyl-Ig-135-2- <i>asy</i> -oz-80/20-230	Injection Volume:	20.0
Vial Number:	898	Channel:	UV_VIS_1
Sample Type:	standard	Wavelength:	290
Control Program:	Liu Yunlin	Bandwidth:	n.a.
Quantif. Method:	Iyl	Dilution Factor:	1.0000
Recording Time:	2011-6-17 16:20	Sample Weight:	1.0000
Run Time (min):	14.81	Sample Amount:	1.0000



No.	Ret. Time min	Peak Name	Height mAU	Area mAU*min	Rel. Area %	Amount	Type
1	8.93	n.a.	14.275	4.160	2.74	n.a.	BMB*
2	12.58	n.a.	339.207	147.528	97.26	n.a.	BMB
Total:			353.481	151.688	100.00	0.000	

default/integration

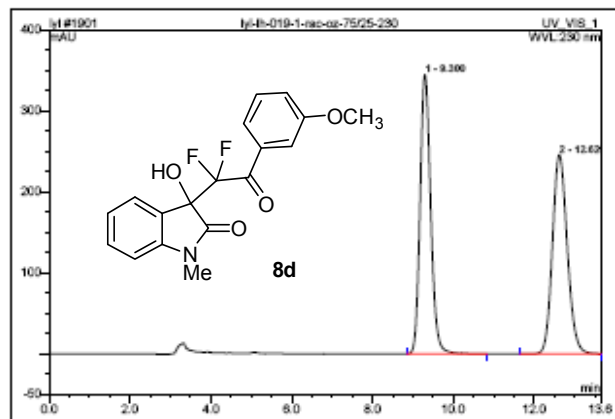
Chromeleon (c) Dionex 1996-2006  
 Version 6.80 (SR8a Build 2643 (158225))

Operator: dell Timebase: U-3000 Sequence: lyl

Page 1-1  
 2011-7-19 10:57

1901 lyl-lh-019-1-*rac*-oz-75/25-230

Sample Name:	lyl-lh-019-1- <i>rac</i> -oz-75/25-230	Injection Volume:	20.0
Vial Number:	898	Channel:	UV_VIS_1
Sample Type:	standard	Wavelength:	290
Control Program:	Liu Yunlin	Bandwidth:	n.a.
Quantif. Method:	lyl	Dilution Factor:	1.0000
Recording Time:	2011-7-19 22:42	Sample Weight:	1.0000
Run Time (min):	18.84	Sample Amount:	1.0000



No.	Ret. Time min	Peak Name	Height mAU	Area mAU*min	Rel. Area %	Amount	Type
1	9.30	n.a.	344.655	104.682	50.08	n.a.	BMB
2	12.62	n.a.	245.952	104.338	49.92	n.a.	BMB
Total:			590.607	209.021	100.00	0.000	

default/integration

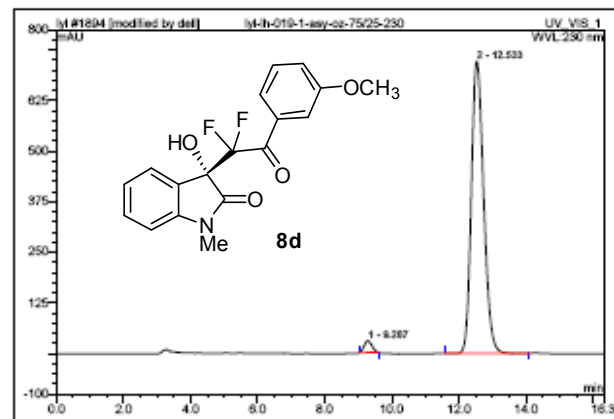
Chromeleon (c) Dionex 1996-2006  
 Version 6.80 (SR8a Build 2643 (158225))

Operator: dell Timebase: U-3000 Sequence: lyl

Page 1-1  
 2011-7-19 10:58

1894 lyl-lh-019-1-*asy*-oz-75/25-230

Sample Name:	lyl-lh-019-1- <i>asy</i> -oz-75/25-230	Injection Volume:	20.0
Vial Number:	898	Channel:	UV_VIS_1
Sample Type:	standard	Wavelength:	290
Control Program:	Liu Yunlin	Bandwidth:	n.a.
Quantif. Method:	lyl	Dilution Factor:	1.0000
Recording Time:	2011-7-19 20:51	Sample Weight:	1.0000
Run Time (min):	18.51	Sample Amount:	1.0000



No.	Ret. Time min	Peak Name	Height mAU	Area mAU*min	Rel. Area %	Amount	Type
1	9.29	n.a.	28.874	7.817	2.50	n.a.	BMB*
2	12.53	n.a.	721.139	305.479	97.50	n.a.	BMB*
Total:			750.013	313.296	100.00	0.000	

default/integration

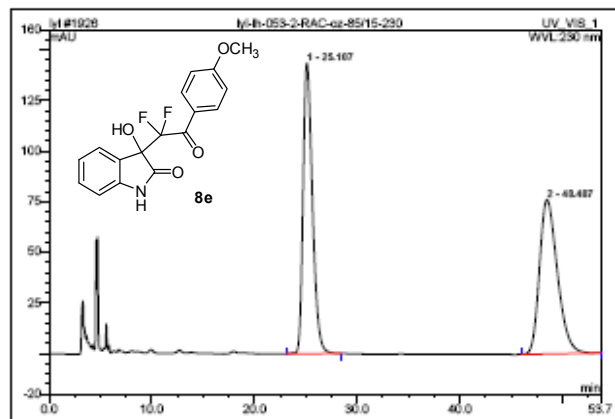
Chromeleon (c) Dionex 1996-2006  
 Version 6.80 (SR8a Build 2643 (158225))

Operator: dell Timebase: U-3000 Sequence: ylj

Page 1-1  
 2011-7-23 10:15

1926 Iyl-Ih-053-2-RAC-oz-85/15-230

Sample Name:	Iyl-Ih-053-2-RAC-oz-85/15-230	Injection Volume:	20.0
Vial Number:	898	Channel:	UV_VIS_1
Sample Type:	standard	Wavelength:	290
Control Program:	Liu Yunlin	Bandwidth:	n.a.
Quantif. Method:	Iyl	Dilution Factor:	1.0000
Recording Time:	2011-7-23 18:06	Sample Weight:	1.0000
Run Time (min):	63.89	Sample Amount:	1.0000



No.	Ret. Time min	Peak Name	Height mAU	Area mAU*min	Rel. Area %	Amount	Type
1	25.11	n.a.	143.520	151.626	49.62	n.a.	BMB
2	48.49	n.a.	76.217	153.342	50.38	n.a.	BMB
Total:			219.737	305.568	100.00	0.000	

default/integration

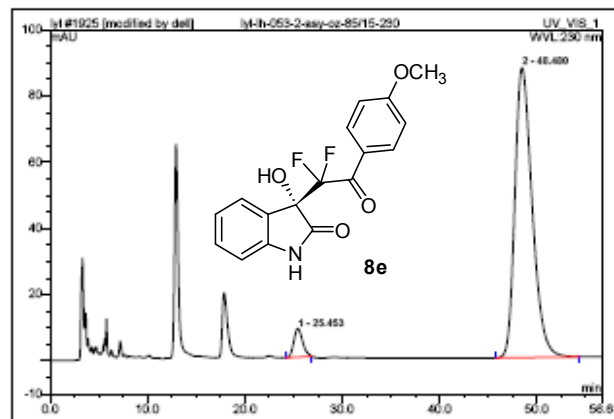
Chromeleon (c) Dionex 1996-2006  
 Version 6.80 (SR8a Build 2643 (158225))

Operator: dell Timebase: U-3000 Sequence: ylj

Page 1-1  
 2011-7-23 10:18

1925 Iyl-Ih-053-2-asy-oz-85/15-230

Sample Name:	Iyl-Ih-053-2-asy-oz-85/15-230	Injection Volume:	20.0
Vial Number:	898	Channel:	UV_VIS_1
Sample Type:	standard	Wavelength:	290
Control Program:	Liu Yunlin	Bandwidth:	n.a.
Quantif. Method:	Iyl	Dilution Factor:	1.0000
Recording Time:	2011-7-23 18:07	Sample Weight:	1.0000
Run Time (min):	66.63	Sample Amount:	1.0000



No.	Ret. Time min	Peak Name	Height mAU	Area mAU*min	Rel. Area %	Amount	Type
1	25.45	n.a.	8.606	8.979	4.75	n.a.	BMB*
2	48.48	n.a.	87.523	180.022	95.25	n.a.	BMB
Total:			96.129	189.000	100.00	0.000	

default/integration

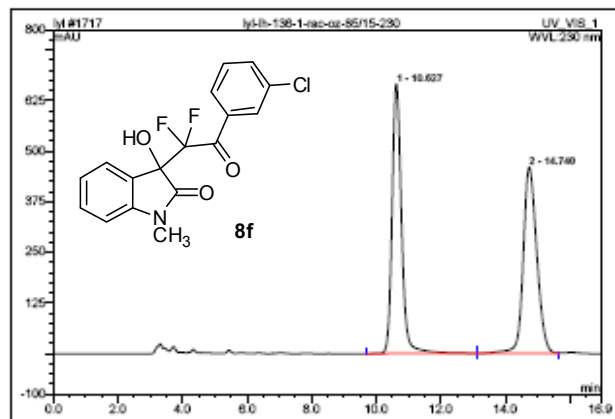
Chromeleon (c) Dionex 1996-2006  
 Version 6.80 (SR8a Build 2643 (158225))

Operator: dell Timebase: U-3000 Sequence: lyl

Page 1-1  
 2011-6-20 7:16

1717 lyl-lh-136-1-*rac*-oz-85/15-230

Sample Name:	lyl-lh-136-1- <i>rac</i> -oz-85/15-230	Injection Volume:	20.0
Vial Number:	898	Channel:	UV_VIS_1
Sample Type:	standard	Wavelength:	290
Control Program:	Liu Yunlin	Bandwidth:	n.a.
Quantif. Method:	lyl	Dilution Factor:	1.0000
Recording Time:	2011-6-20 18:48	Sample Weight:	1.0000
Run Time (min):	18.85	Sample Amount:	1.0000



No.	Ret.Time min	Peak Name	Height mAU	Area mAU*min	Rel.Area %	Amount	Type
1	10.63	n.a.	666.787	225.349	50.30	n.a.	BM
2	14.74	n.a.	459.166	222.645	49.70	n.a.	MB
Total:			1125.953	447.994	100.00	0.000	

default/integration

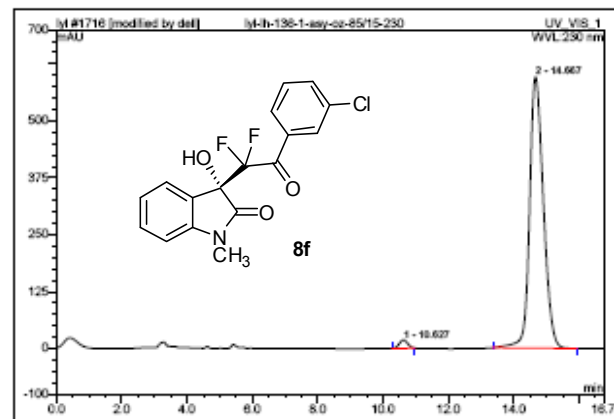
Chromeleon (c) Dionex 1996-2006  
 Version 6.80 (SR8a Build 2643 (158225))

Operator: dell Timebase: U-3000 Sequence: lyl

Page 1-1  
 2011-6-20 7:08

1716 lyl-lh-136-1-*asy*-oz-85/15-230

Sample Name:	lyl-lh-136-1- <i>asy</i> -oz-85/15-230	Injection Volume:	20.0
Vial Number:	898	Channel:	UV_VIS_1
Sample Type:	standard	Wavelength:	290
Control Program:	Liu Yunlin	Bandwidth:	n.a.
Quantif. Method:	lyl	Dilution Factor:	1.0000
Recording Time:	2011-6-20 18:30	Sample Weight:	1.0000
Run Time (min):	16.75	Sample Amount:	1.0000



No.	Ret.Time min	Peak Name	Height mAU	Area mAU*min	Rel.Area %	Amount	Type
1	10.63	n.a.	18.220	5.423	1.83	n.a.	BMB*
2	14.67	n.a.	595.116	290.832	98.17	n.a.	BMB*
Total:			613.336	296.256	100.00	0.000	

default/integration

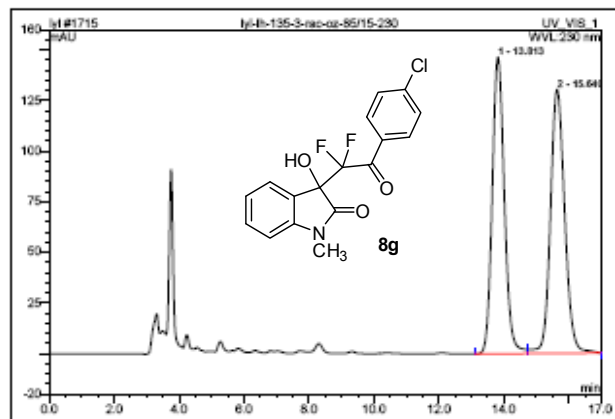
Chromeleon (c) Dionex 1996-2006  
 Version 6.80 (SR8a Build 2643 (158225))

Operator: dell Timebase: U-3000 Sequence: lyl

Page 1-1  
 2011-6-20 6:50

1715 lyl-lh-135-3-*rac*-oz-85/15-230

Sample Name:	lyl-lh-135-3- <i>rac</i> -oz-85/15-230	Injection Volume:	20.0
Vial Number:	898	Channel:	UV_VI8_1
Sample Type:	standard	Wavelength:	290
Control Program:	Liu Yunlin	Bandwidth:	n.a.
Quantif. Method:	lyl	Dilution Factor:	1.0000
Recording Time:	2011-6-20 18:13	Sample Weight:	1.0000
Run Time (min):	18.87	Sample Amount:	1.0000



No.	Ret.Time min	Peak Name	Height mAU	Area mAU*min	Rel.Area %	Amount	Type
1	13.81	n.a.	146.578	63.385	48.88	n.a.	BM
2	15.64	n.a.	130.368	66.292	51.12	n.a.	MB
Total:			276.946	129.677	100.00	0.000	

default/integration

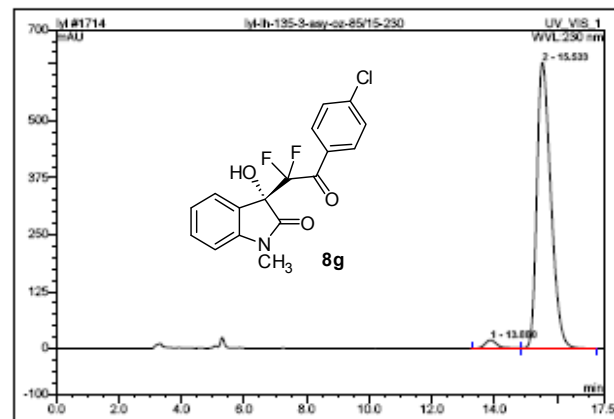
Chromeleon (c) Dionex 1996-2006  
 Version 6.80 (SR8a Build 2643 (158225))

Operator: dell Timebase: U-3000 Sequence: lyl

Page 1-1  
 2011-6-20 6:49

1714 lyl-lh-135-3-*asy*-oz-85/15-230

Sample Name:	lyl-lh-135-3- <i>asy</i> -oz-85/15-230	Injection Volume:	20.0
Vial Number:	898	Channel:	UV_VI8_1
Sample Type:	standard	Wavelength:	290
Control Program:	Liu Yunlin	Bandwidth:	n.a.
Quantif. Method:	lyl	Dilution Factor:	1.0000
Recording Time:	2011-6-20 17:21	Sample Weight:	1.0000
Run Time (min):	17.48	Sample Amount:	1.0000



No.	Ret.Time min	Peak Name	Height mAU	Area mAU*min	Rel.Area %	Amount	Type
1	13.88	n.a.	18.584	8.654	2.59	n.a.	BM
2	15.53	n.a.	627.723	325.938	97.41	n.a.	MB
Total:			646.307	334.592	100.00	0.000	

default/integration

Chromeleon (c) Dionex 1996-2006  
 Version 6.80 (SR8a Build 2643 (158225))

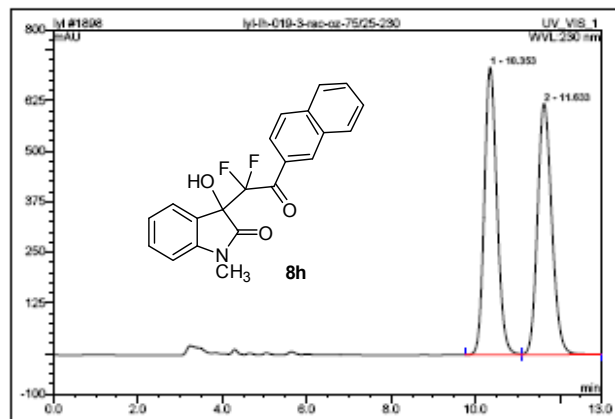


Operator: dell Timebase: U-3000 Sequence: yl

Page 1-1  
 2011-7-19 10:16

1898 yl-lh-019-3-*rac*-oz-75/25-230

Sample Name:	yl-lh-019-3- <i>rac</i> -oz-75/25-230	Injection Volume:	20.0
Vial Number:	898	Channel:	UV_VIS_1
Sample Type:	standard	Wavelength:	290
Control Program:	Liu Yunlin	Bandwidth:	n.a.
Quantif. Method:	yl	Dilution Factor:	1.0000
Recording Time:	2011-7-19 22:00	Sample Weight:	1.0000
Run Time (min):	12.87	Sample Amount:	1.0000



No.	Ret. Time min	Peak Name	Height mAU	Area mAU*min	Rel. Area %	Amount	Type
1	10.35	n.a.	710.114	245.024	50.09	n.a.	BM
2	11.63	n.a.	620.262	244.166	49.91	n.a.	MB
Total:			1330.376	489.190	100.00	0.000	

default/Integration

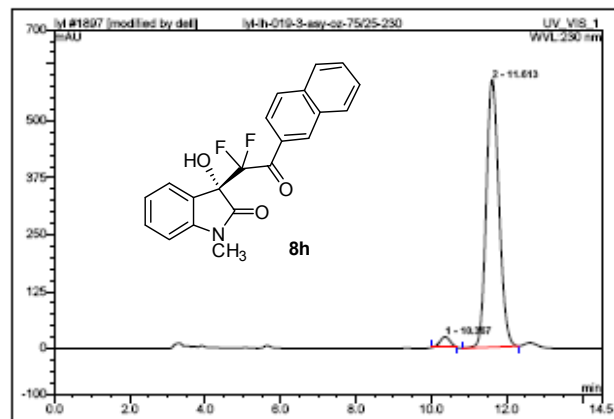
Chromeleon (c) Dionex 1996-2006  
 Version 6.80 (SR6a Build 2643 (158225))

Operator: dell Timebase: U-3000 Sequence: yl

Page 1-1  
 2011-7-19 10:16

1897 yl-lh-019-3-*asy*-oz-75/25-230

Sample Name:	yl-lh-019-3- <i>asy</i> -oz-75/25-230	Injection Volume:	20.0
Vial Number:	898	Channel:	UV_VIS_1
Sample Type:	standard	Wavelength:	290
Control Program:	Liu Yunlin	Bandwidth:	n.a.
Quantif. Method:	yl	Dilution Factor:	1.0000
Recording Time:	2011-7-19 21:44	Sample Weight:	1.0000
Run Time (min):	14.51	Sample Amount:	1.0000



No.	Ret. Time min	Peak Name	Height mAU	Area mAU*min	Rel. Area %	Amount	Type
1	10.37	n.a.	23.529	7.436	3.13	n.a.	BMB*
2	11.61	n.a.	587.819	229.877	96.87	n.a.	BMB*
Total:			611.348	237.313	100.00	0.000	

default/Integration

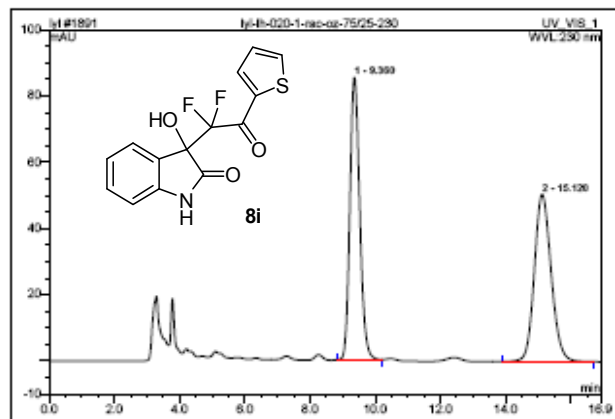
Chromeleon (c) Dionex 1996-2006  
 Version 6.80 (SR6a Build 2643 (158225))

Operator: dell Timebase: U-3000 Sequence: lyl

Page 1-1  
 2011-7-19 10:03

1891 lyl-lh-020-1-*rac*-oz-75/25-230

Sample Name:	lyl-lh-020-1- <i>rac</i> -oz-75/25-230	Injection Volume:	20.0
Vial Number:	898	Channel:	UV_VIS_1
Sample Type:	standard	Wavelength:	290
Control Program:	Liu Yunlin	Bandwidth:	n.a.
Quantif. Method:	lyl	Dilution Factor:	1.0000
Recording Time:	2011-7-19 18:37	Sample Weight:	1.0000
Run Time (min):	18.81	Sample Amount:	1.0000



No.	Ret. Time min	Peak Name	Height mAU	Area mAU*min	Rel. Area %	Amount	Type
1	9.36	n.a.	85.237	25.710	49.59	n.a.	BMB
2	15.12	n.a.	50.488	30.207	50.41	n.a.	BMB
Total:			135.725	55.918	100.00	0.000	

default/integration

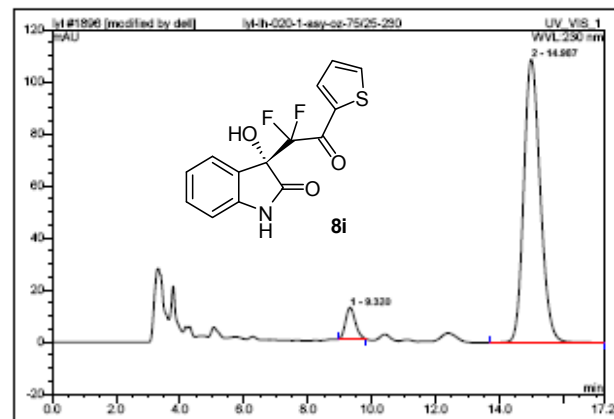
Chromeleon (c) Dionex 1996-2006  
 Version 6.80 (SR6a Build 2643 (158225))

Operator: dell Timebase: U-3000 Sequence: lyl

Page 1-1  
 2011-7-19 10:02

1896 lyl-lh-020-1-*asy*-oz-75/25-230

Sample Name:	lyl-lh-020-1- <i>asy</i> -oz-75/25-230	Injection Volume:	20.0
Vial Number:	898	Channel:	UV_VIS_1
Sample Type:	standard	Wavelength:	290
Control Program:	Liu Yunlin	Bandwidth:	n.a.
Quantif. Method:	lyl	Dilution Factor:	1.0000
Recording Time:	2011-7-19 21:27	Sample Weight:	1.0000
Run Time (min):	17.24	Sample Amount:	1.0000



No.	Ret. Time min	Peak Name	Height mAU	Area mAU*min	Rel. Area %	Amount	Type
1	9.32	n.a.	12.105	4.290	6.19	n.a.	BMB*
2	14.99	n.a.	108.885	65.006	93.81	n.a.	BMB
Total:			120.991	69.295	100.00	0.000	

default/integration

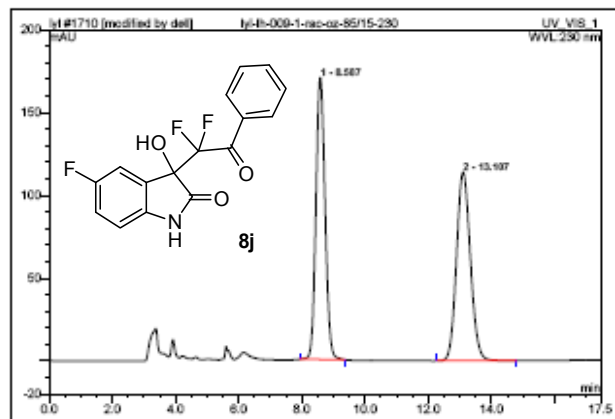
Chromeleon (c) Dionex 1996-2006  
 Version 6.80 (SR6a Build 2643 (158225))

Operator: dell Timebase: U-3000 Sequence: lyl

Page 1-1  
 2011-6-20 4:59

1710 lyl-lh-009-1-rac-oz-85/15-230

Sample Name:	lyl-lh-009-1-rac-oz-85/15-230	Injection Volume:	20.0
Vial Number:	898	Channel:	UV_VIS_1
Sample Type:	standard	Wavelength:	290
Control Program:	Liu Yunlin	Bandwidth:	n.a.
Quantif. Method:	lyl	Dilution Factor:	1.0000
Recording Time:	2011-6-20 16:40	Sample Weight:	1.0000
Run Time (min):	17.45	Sample Amount:	1.0000



No.	Ret. Time min	Peak Name	Height mAU	Area mAU*min	Rel. Area %	Amount	Type
1	8.59	n.a.	170.251	56.976	49.67	n.a.	BMB*
2	13.11	n.a.	113.896	57.742	50.33	n.a.	BMB
Total:			284.118	114.718	100.00	0.000	

default/integration

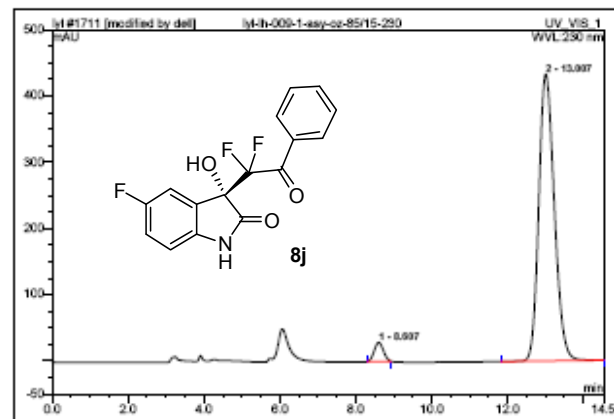
Chromeleon (c) Dionex 1996-2006  
 Version 6.80 (SR8a Build 2643 (158225))

Operator: dell Timebase: U-3000 Sequence: lyl

Page 1-1  
 2011-6-20 4:58

1711 lyl-lh-009-1-asy-oz-85/15-230

Sample Name:	lyl-lh-009-1-asy-oz-85/15-230	Injection Volume:	20.0
Vial Number:	898	Channel:	UV_VIS_1
Sample Type:	standard	Wavelength:	290
Control Program:	Liu Yunlin	Bandwidth:	n.a.
Quantif. Method:	lyl	Dilution Factor:	1.0000
Recording Time:	2011-6-20 16:58	Sample Weight:	1.0000
Run Time (min):	14.53	Sample Amount:	1.0000



No.	Ret. Time min	Peak Name	Height mAU	Area mAU*min	Rel. Area %	Amount	Type
1	8.61	n.a.	28.560	7.951	3.73	n.a.	BMB*
2	13.01	n.a.	433.147	205.268	96.27	n.a.	BMB
Total:			461.707	213.219	100.00	0.000	

default/integration

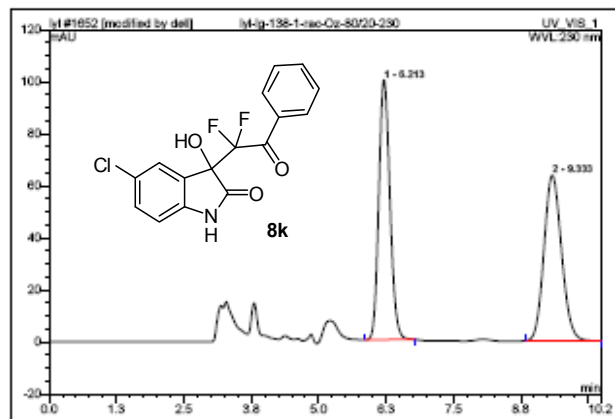
Chromeleon (c) Dionex 1996-2006  
 Version 6.80 (SR8a Build 2643 (158225))

Operator:deli Timebase:U-3000 Sequence:yl

Page 1-1  
 2011-7-19 6:34

1652 lyl-Ig-138-1-*rac*-Oz-80/20-230

Sample Name:	lyl-Ig-138-1- <i>rac</i> -Oz-80/20-230	Injection Volume:	20.0
Vial Number:	999	Channel:	UV_VIS_1
Sample Type:	standard	Wavelength:	290
Control Program:	Liu Yunlin	Bandwidth:	n.a.
Quantif. Method:	lyl	Dilution Factor:	1.0000
Recording Time:	2011-8-11 18:06	Sample Weight:	1.0000
Run Time (min):	10.23	Sample Amount:	1.0000



No.	Ret.Time min	Peak Name	Height mAU	Area mAU*min	Rel.Area %	Amount	Type
1	6.21	n.a.	95.849	23.853	49.95	n.a.	BMB*
2	9.33	n.a.	63.694	24.002	50.15	n.a.	BMB
Total:			163.433	47.855	100.00	0.000	

default/integration

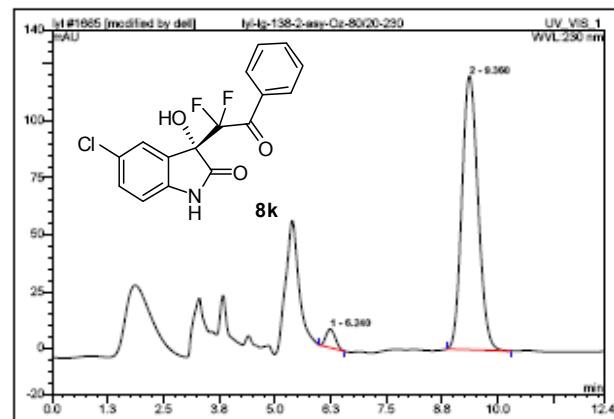
Chromeleon (c) Dionex 1996-2006  
 Version 6.80 (SR8a Build 2643 (158225))

Operator:deli Timebase:U-3000 Sequence:yl

Page 1-1  
 2011-7-19 6:35

1665 lyl-Ig-138-2-*asy*-Oz-80/20-230

Sample Name:	lyl-Ig-138-2- <i>asy</i> -Oz-80/20-230	Injection Volume:	20.0
Vial Number:	999	Channel:	UV_VIS_1
Sample Type:	standard	Wavelength:	290
Control Program:	Liu Yunlin	Bandwidth:	n.a.
Quantif. Method:	lyl	Dilution Factor:	1.0000
Recording Time:	2011-8-14 18:48	Sample Weight:	1.0000
Run Time (min):	12.57	Sample Amount:	1.0000



No.	Ret.Time min	Peak Name	Height mAU	Area mAU*min	Rel.Area %	Amount	Type
1	6.24	n.a.	8.191	1.997	3.82	n.a.	BMB*
2	9.36	n.a.	120.253	50.340	96.18	n.a.	BMB
Total:			128.443	52.337	100.00	0.000	

default/integration

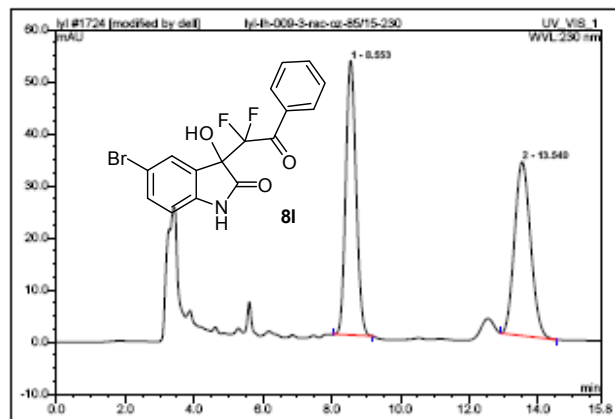
Chromeleon (c) Dionex 1996-2006  
 Version 6.80 (SR8a Build 2643 (158225))

Operator: dell Timebase: U-3000 Sequence: yl

Page 1-1  
 2011-6-21 6:47

1724 Iyl-Ih-009-3-raz-oz-85/15-230

Sample Name:	Iyl-Ih-009-3-raz-oz-85/15-230	Injection Volume:	20.0
Vial Number:	898	Channel:	UV_VIS_1
Sample Type:	standard	Wavelength:	290
Control Program:	Liu Yunlin	Bandwidth:	n.a.
Quantif. Method:	Iyl	Dilution Factor:	1.0000
Recording Time:	2011-6-21 18:13	Sample Weight:	1.0000
Run Time (min):	16.81	Sample Amount:	1.0000



No.	Ret. Time min	Peak Name	Height mAU	Area mAU*min	Rel. Area %	Amount	Type
1	8.55	n.a.	52.720	18.355	50.36	n.a.	BMB*
2	13.54	n.a.	33.380	18.089	49.64	n.a.	BMB
Total:			86.100	36.444	100.00	0.000	

default/integration

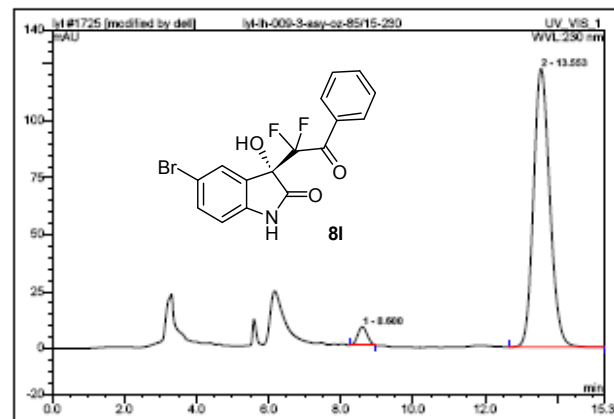
Chromeleon (c) Dionex 1996-2006  
 Version 6.80 (SR6a Build 2643 (158225))

Operator: dell Timebase: U-3000 Sequence: yl

Page 1-1  
 2011-6-21 6:48

1725 Iyl-Ih-009-3-asy-oz-85/15-230

Sample Name:	Iyl-Ih-009-3-asy-oz-85/15-230	Injection Volume:	20.0
Vial Number:	898	Channel:	UV_VIS_1
Sample Type:	standard	Wavelength:	290
Control Program:	Liu Yunlin	Bandwidth:	n.a.
Quantif. Method:	Iyl	Dilution Factor:	1.0000
Recording Time:	2011-6-21 18:28	Sample Weight:	1.0000
Run Time (min):	16.28	Sample Amount:	1.0000



No.	Ret. Time min	Peak Name	Height mAU	Area mAU*min	Rel. Area %	Amount	Type
1	8.60	n.a.	8.008	2.408	3.64	n.a.	BMB*
2	13.55	n.a.	122.234	63.834	96.36	n.a.	BMB
Total:			130.241	66.243	100.00	0.000	

default/integration

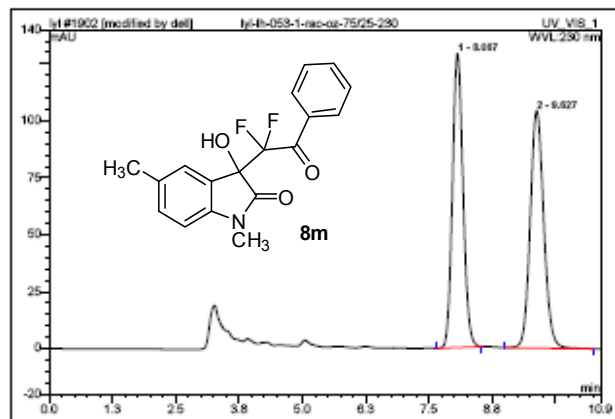
Chromeleon (c) Dionex 1996-2006  
 Version 6.80 (SR6a Build 2643 (158225))

Operator: dell Timebase: U-3000 Sequence: yl

Page 1-1  
 2011-7-19 11:20

1902 Iyl-Ih-053-1-rao-oz-75/25-230

Sample Name:	Iyl-Ih-053-1-rao-oz-75/25-230	Injection Volume:	20.0
Vial Number:	898	Channel:	UV_VIS_1
Sample Type:	standard	Wavelength:	290
Control Program:	Liu Yunlin	Bandwidth:	n.a.
Quantif. Method:	Iyl	Dilution Factor:	1.0000
Recording Time:	2011-7-19 22:58	Sample Weight:	1.0000
Run Time (min):	10.89	Sample Amount:	1.0000



No.	Ret. Time min	Peak Name	Height mAU	Area mAU*min	Rel. Area %	Amount	Type
1	8.07	n.a.	125.153	31.221	49.12	n.a.	BMB*
2	9.63	n.a.	104.358	32.339	50.88	n.a.	BMB
Total:			233.520	63.560	100.00	0.000	

default/Integration

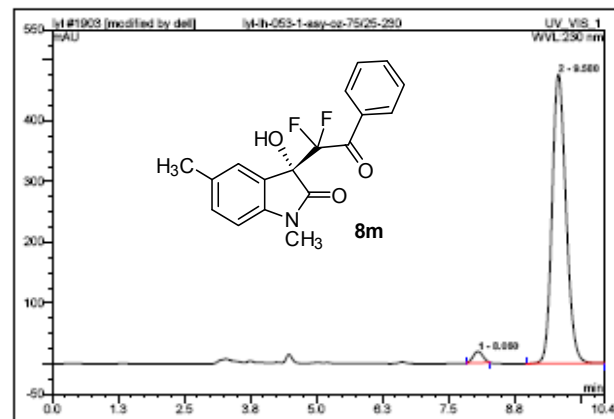
Chromeleon (c) Dionex 1996-2006  
 Version 6.80 (SR8a Build 2643 (158225))

Operator: dell Timebase: U-3000 Sequence: yl

Page 1-1  
 2011-7-19 11:20

1903 Iyl-Ih-053-1-asy-oz-75/25-230

Sample Name:	Iyl-Ih-053-1-asy-oz-75/25-230	Injection Volume:	20.0
Vial Number:	898	Channel:	UV_VIS_1
Sample Type:	standard	Wavelength:	290
Control Program:	Liu Yunlin	Bandwidth:	n.a.
Quantif. Method:	Iyl	Dilution Factor:	1.0000
Recording Time:	2011-7-19 23:07	Sample Weight:	1.0000
Run Time (min):	10.43	Sample Amount:	1.0000



No.	Ret. Time min	Peak Name	Height mAU	Area mAU*min	Rel. Area %	Amount	Type
1	8.06	n.a.	18.555	4.034	2.59	n.a.	BMB*
2	9.58	n.a.	476.457	145.675	97.31	n.a.	BMB
Total:			495.122	149.709	100.00	0.000	

default/Integration

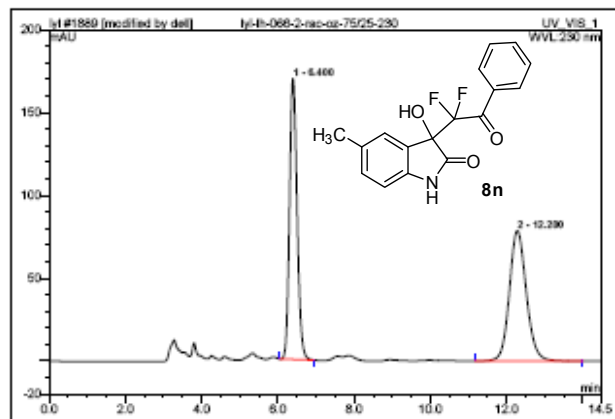
Chromeleon (c) Dionex 1996-2006  
 Version 6.80 (SR8a Build 2643 (158225))

Operator: dell Timebase: U-3000 Sequence: lyl

Page 1-1  
 2011-7-19 10:09

1889 lyl-IH-066-2-*rac*-oz-75/25-230

Sample Name:	lyl-IH-066-2- <i>rac</i> -oz-75/25-230	Injection Volume:	20.0
Vial Number:	898	Channel:	UV_VIS_1
Sample Type:	standard	Wavelength:	290
Control Program:	Liu Yunlin	Bandwidth:	n.a.
Quantif. Method:	lyl	Dilution Factor:	1.0000
Recording Time:	2011-7-19 18:04	Sample Weight:	1.0000
Run Time (min):	14.48	Sample Amount:	1.0000



No.	Ret. Time min	Peak Name	Height mAU	Area mAU*min	Rel. Area %	Amount	Type
1	6.40	n.a.	165.542	38.814	48.95	n.a.	BMB*
2	12.28	n.a.	78.674	40.483	51.05	n.a.	BMB
Total:			248.216	79.297	100.00	0.000	

default/integration

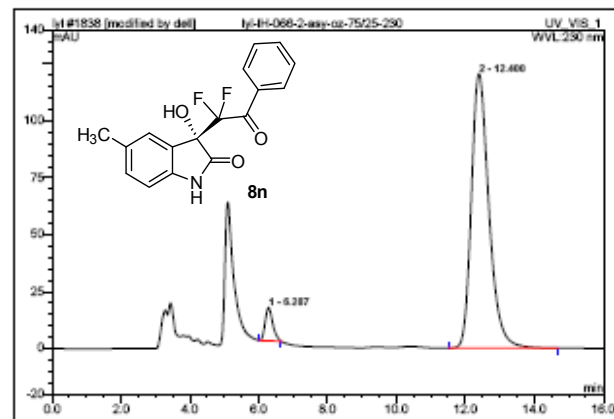
Chromeleon (c) Dionex 1996-2006  
 Version 6.80 (SR6a Build 2643 (158225))

Operator: dell Timebase: U-3000 Sequence: lyl

Page 1-1  
 2011-7-19 10:11

1838 lyl-IH-066-2-*asy*-oz-75/25-230

Sample Name:	lyl-IH-066-2- <i>asy</i> -oz-75/25-230	Injection Volume:	20.0
Vial Number:	898	Channel:	UV_VIS_1
Sample Type:	standard	Wavelength:	290
Control Program:	Liu Yunlin	Bandwidth:	n.a.
Quantif. Method:	lyl	Dilution Factor:	1.0000
Recording Time:	2011-7-8 18:08	Sample Weight:	1.0000
Run Time (min):	16.01	Sample Amount:	1.0000



No.	Ret. Time min	Peak Name	Height mAU	Area mAU*min	Rel. Area %	Amount	Type
1	6.23	n.a.	14.551	3.680	4.92	n.a.	BMB*
2	12.40	n.a.	120.438	71.116	95.08	n.a.	BMB
Total:			134.989	74.796	100.00	0.000	

default/integration

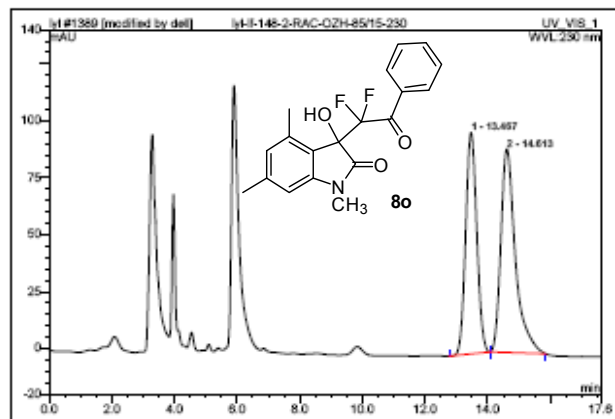
Chromeleon (c) Dionex 1996-2006  
 Version 6.80 (SR6a Build 2643 (158225))

Operator: dell Timebase: U-3000 Sequence: ylj

Page 1-1  
 2011-7-17 9:42

1389 Iyl-I-148-2-RAC-OZH-85/15-230

Sample Name:	Iyl-I-148-2-RAC-OZH-85/15-230	Injection Volume:	20.0
Vial Number:	898	Channel:	UV_VIS_1
Sample Type:	standard	Wavelength:	290
Control Program:	Liu Yunlin	Bandwidth:	n.a.
Quantif. Method:	Iyl	Dilution Factor:	1.0000
Recording Time:	2011-4-28 14:16	Sample Weight:	1.0000
Run Time (min):	17.80	Sample Amount:	1.0000



No.	Ret.Time min	Peak Name	Height mAU	Area mAU*min	Rel.Area %	Amount	Type
1	13.47	n.a.	97.255	35.742	45.23	n.a.	BMB*
2	14.61	n.a.	85.393	48.130	54.77	n.a.	BMB*
Total:			186.648	87.871	100.00	0.000	

default/integration

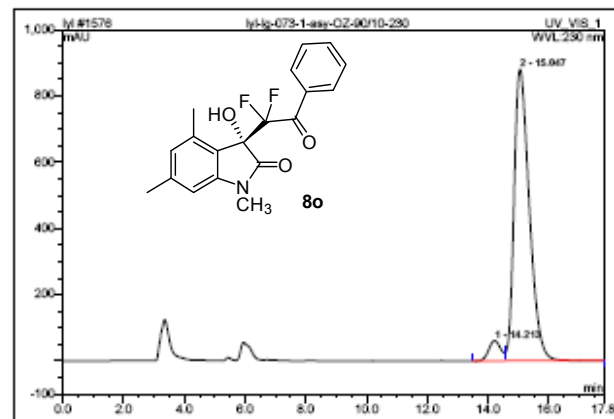
Chromeleon (c) Dionex 1996-2006  
 Version 6.80 (SR8a Build 2643 (158225))

Operator: dell Timebase: U-3000 Sequence: ylj

Page 1-1  
 2011-7-17 9:43

1576 Iyl-Ig-073-1-asy-OZ-90/10-230

Sample Name:	Iyl-Ig-073-1-asy-OZ-90/10-230	Injection Volume:	20.0
Vial Number:	898	Channel:	UV_VIS_1
Sample Type:	standard	Wavelength:	290
Control Program:	Liu Yunlin	Bandwidth:	n.a.
Quantif. Method:	Iyl	Dilution Factor:	1.0000
Recording Time:	2011-5-28 18:18	Sample Weight:	1.0000
Run Time (min):	17.79	Sample Amount:	1.0000



No.	Ret.Time min	Peak Name	Height mAU	Area mAU*min	Rel.Area %	Amount	Type
1	14.21	n.a.	60.600	27.480	5.09	n.a.	BM
2	15.05	n.a.	880.025	512.691	94.91	n.a.	MB
Total:			940.625	540.161	100.00	0.000	

default/integration

Chromeleon (c) Dionex 1996-2006  
 Version 6.80 (SR8a Build 2643 (158225))

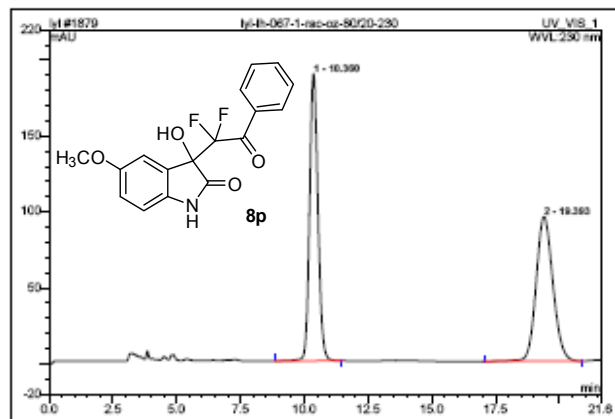


Operator: dell Timebase: U-3000 Sequence: yl

Page 1-1  
 2011-7-17 10:44

1879 Iyl-Ih-067-1-rac-oz-80/20-230

Sample Name:	Iyl-Ih-067-1-rac-oz-80/20-230	Injection Volume:	20.0
Vial Number:	898	Channel:	UV_VIS_1
Sample Type:	standard	Wavelength:	290
Control Program:	Liu Yunlin	Bandwidth:	n.a.
Quantif. Method:	Iyl	Dilution Factor:	1.0000
Recording Time:	2011-7-17 21:56	Sample Weight:	1.0000
Run Time (min):	21.81	Sample Amount:	1.0000



No.	Ret. Time min	Peak Name	Height mAU	Area mAU*min	Rel. Area %	Amount	Type
1	10.36	n.a.	185.106	71.831	49.72	n.a.	BMB
2	19.39	n.a.	95.074	72.635	50.28	n.a.	BMB
Total:			284.180	144.466	100.00	0.000	

default/Integration

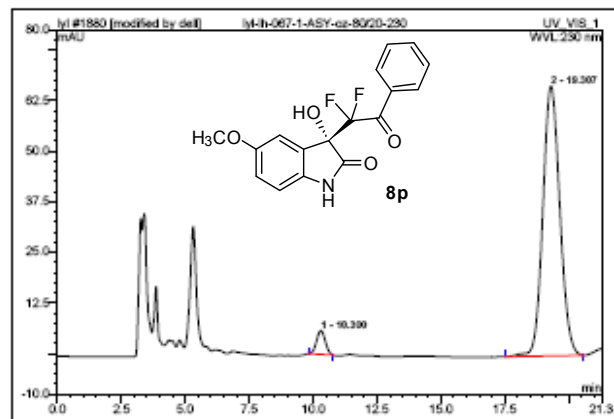
Chromeleon (c) Dionex 1996-2006  
 Version 6.80 (SR8a Build 2643 (158225))

Operator: dell Timebase: U-3000 Sequence: yl

Page 1-2  
 2011-7-17 10:43

1880 Iyl-Ih-067-1-ASY-oz-80/20-230

Sample Name:	Iyl-Ih-067-1-ASY-oz-80/20-230	Injection Volume:	20.0
Vial Number:	898	Channel:	UV_VIS_1
Sample Type:	standard	Wavelength:	290
Control Program:	Liu Yunlin	Bandwidth:	n.a.
Quantif. Method:	Iyl	Dilution Factor:	1.0000
Recording Time:	2011-7-17 22:18	Sample Weight:	1.0000
Run Time (min):	21.28	Sample Amount:	1.0000



No.	Ret. Time min	Peak Name	Height mAU	Area mAU*min	Rel. Area %	Amount	Type
1	10.30	n.a.	5.875	2.317	4.32	n.a.	BMB*
2	19.31	n.a.	66.607	51.346	95.68	n.a.	BMB
Total:			72.482	53.664	100.00	0.000	

default/Integration

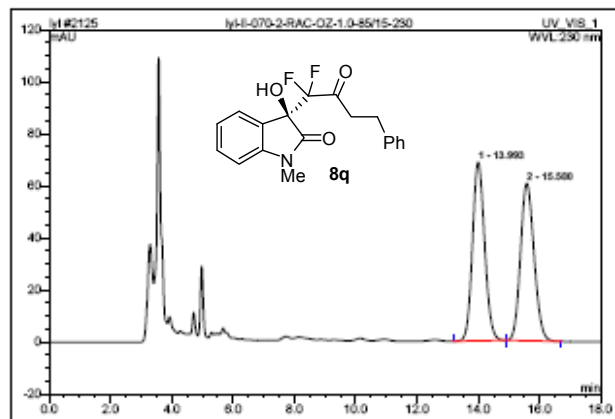
Chromeleon (c) Dionex 1996-2006  
 Version 6.80 (SR8a Build 2643 (158225))

Operator:deli Timebase:U-3000 Sequence:lyl

Page 1-1  
 2011-10-28 4:10

2125 lyl-II-070-2-RAC-OZ-1.0-85/15-230

Sample Name:	lyl-II-070-2-RAC-OZ-1.0-85/15-230	Injection Volume:	20.0
Vial Number:	898	Channel:	UV_VIS_1
Sample Type:	standard	Wavelength:	290
Control Program:	Liu Yunlin	Bandwidth:	n.a.
Quantif. Method:	lyl	Dilution Factor:	1.0000
Recording Time:	2011-10-28 14:48	Sample Weight:	1.0000
Run Time (min):	17.88	Sample Amount:	1.0000



No.	Ret.Time min	Peak Name	Height mAU	Area mAU*min	Rel.Area %	Amount	Type
1	13.99	n.a.	68.661	31.588	50.41	n.a.	BMB
2	15.58	n.a.	60.499	31.077	49.59	n.a.	BMB
Total:			129.160	62.665	100.00	0.000	

default/integration

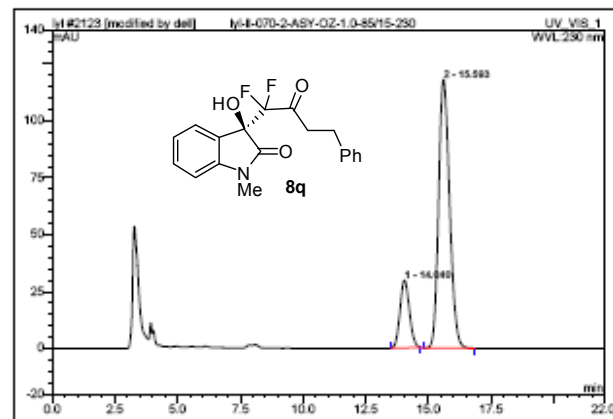
Chromleon (c) Dionex 1996-2006  
 Version 6.80 SR8a Build 2643 (158225)

Operator:deli Timebase:U-3000 Sequence:lyl

Page 1-1  
 2011-10-28 4:09

2123 lyl-II-070-2-ASY-OZ-1.0-85/15-230

Sample Name:	lyl-II-070-2-ASY-OZ-1.0-85/15-230	Injection Volume:	20.0
Vial Number:	898	Channel:	UV_VIS_1
Sample Type:	standard	Wavelength:	290
Control Program:	Liu Yunlin	Bandwidth:	n.a.
Quantif. Method:	lyl	Dilution Factor:	1.0000
Recording Time:	2011-10-28 18:67	Sample Weight:	1.0000
Run Time (min):	21.87	Sample Amount:	1.0000



No.	Ret.Time min	Peak Name	Height mAU	Area mAU*min	Rel.Area %	Amount	Type
1	14.04	n.a.	29.642	12.886	17.72	n.a.	BMB*
2	15.59	n.a.	117.983	59.831	82.28	n.a.	BMB*
Total:			147.625	72.717	100.00	0.000	

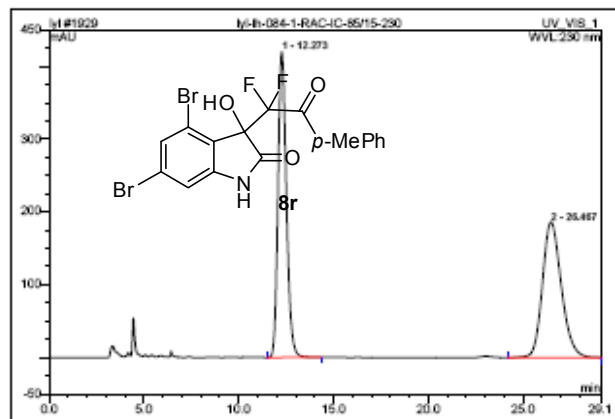
default/integration

Chromleon (c) Dionex 1996-2006  
 Version 6.80 SR8a Build 2643 (158225)

Operator: dell Timebase: U-3000 Sequence: ylj

Page 1-1  
 2011-7-23 10:20

1929 Iyl-Ih-084-1-RAC-IC-85/15-230			
Sample Name:	Iyl-Ih-084-1-RAC-IC-85/15-230	Injection Volume:	20.0
Vial Number:	898	Channel:	UV_VIS_1
Sample Type:	standard	Wavelength:	290
Control Program:	Liu Yunlin	Bandwidth:	n.a.
Quantif. Method:	Iyl	Dilution Factor:	1.0000
Recording Time:	2011-7-23 21:14	Sample Weight:	1.0000
Run Time (min):	28.07	Sample Amount:	1.0000



No.	Ret. Time min	Peak Name	Height mAU	Area mAU*min	Rel. Area %	Amount	Type
1	12.27	n.a.	415.357	214.588	50.03	n.a.	BMB
2	25.47	n.a.	185.976	214.434	49.97	n.a.	BMB
Total:			605.334	429.122	100.00	0.000	

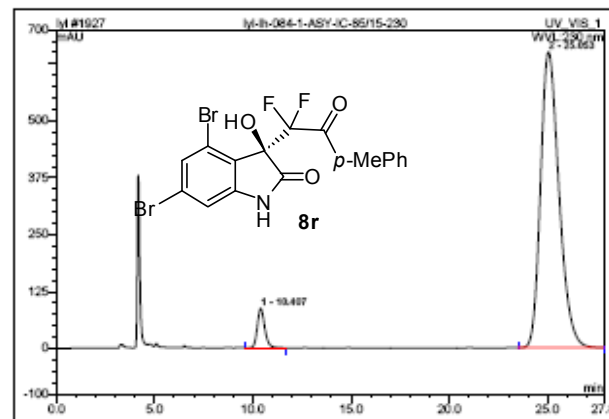
default/Integration

Chromeleon (c) Dionex 1996-2006  
 Version 6.80 (SR8a Build 2643 (158225))

Operator: dell Timebase: U-3000 Sequence: ylj

Page 1-1  
 2011-7-23 10:19

1927 Iyl-Ih-084-1-ASY-IC-85/15-230			
Sample Name:	Iyl-Ih-084-1-ASY-IC-85/15-230	Injection Volume:	20.0
Vial Number:	898	Channel:	UV_VIS_1
Sample Type:	standard	Wavelength:	290
Control Program:	Liu Yunlin	Bandwidth:	n.a.
Quantif. Method:	Iyl	Dilution Factor:	1.0000
Recording Time:	2011-7-23 20:11	Sample Weight:	1.0000
Run Time (min):	27.85	Sample Amount:	1.0000



No.	Ret. Time min	Peak Name	Height mAU	Area mAU*min	Rel. Area %	Amount	Type
1	10.41	n.a.	86.120	37.526	5.05	n.a.	BMB
2	25.05	n.a.	649.436	707.302	94.95	n.a.	BMB
Total:			735.557	744.828	100.00	0.000	

default/Integration

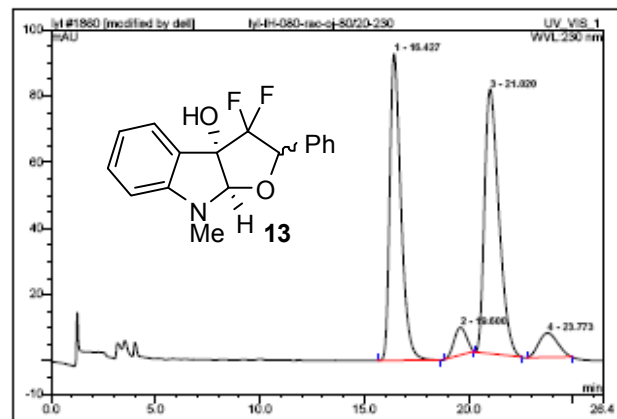
Chromeleon (c) Dionex 1996-2006  
 Version 6.80 (SR8a Build 2643 (158225))

Operator: dell Timebase: U-3000 Sequence: lyl

Page 1-1  
 2011-7-17 10:16

1860 lyl-IH-080-rac-oj-80/20-230

Sample Name:	lyl-IH-080-rac-oj-80/20-230	Injection Volume:	20.0
Vial Number:	898	Channel:	UV_VIS_1
Sample Type:	standard	Wavelength:	290
Control Program:	Liu Yunlin	Bandwidth:	n.a.
Quantif. Method:	lyl	Dilution Factor:	1.0000
Recording Time:	2011-7-10 17:08	Sample Weight:	1.0000
Run Time (min):	28.40	Sample Amount:	1.0000



No.	Ret. Time min	Peak Name	Height mAU	Area mAU*min	Rel. Area %	Amount	Type
1	16.43	n.a.	92.548	57.264	42.64	n.a.	BMB*
2	19.60	n.a.	8.323	5.682	4.23	n.a.	BMB*
3	21.02	n.a.	79.895	63.644	47.39	n.a.	BMB*
4	23.77	n.a.	7.327	7.719	5.75	n.a.	BMB*
Total:			188.083	134.309	100.00	0.000	

default/integration

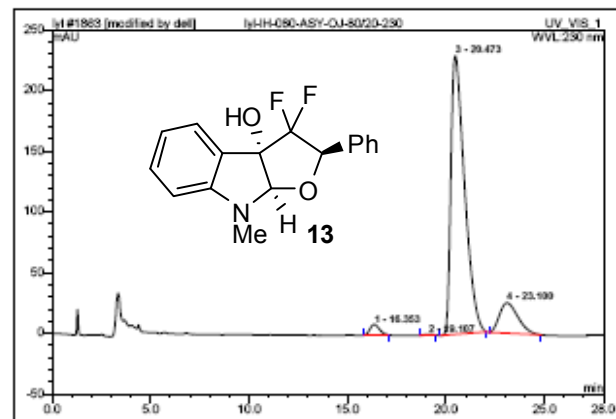
Chromeleon (c) Dionex 1996-2006  
 Version 6.80 (SR8a Build 2643 (158225))

Operator: dell Timebase: U-3000 Sequence: lyl

Page 1-1  
 2011-7-17 10:15

1863 lyl-IH-080-ASY-OJ-80/20-230

Sample Name:	lyl-IH-080-ASY-OJ-80/20-230	Injection Volume:	20.0
Vial Number:	898	Channel:	UV_VIS_1
Sample Type:	standard	Wavelength:	290
Control Program:	Liu Yunlin	Bandwidth:	n.a.
Quantif. Method:	lyl	Dilution Factor:	1.0000
Recording Time:	2011-7-14 18:18	Sample Weight:	1.0000
Run Time (min):	27.89	Sample Amount:	1.0000



No.	Ret. Time min	Peak Name	Height mAU	Area mAU*min	Rel. Area %	Amount	Type
1	16.35	n.a.	8.757	4.755	2.19	n.a.	BMB*
2	19.11	n.a.	0.545	0.266	0.12	n.a.	BMB*
3	20.47	n.a.	229.264	184.668	85.14	n.a.	BMB*
4	23.10	n.a.	24.927	27.201	12.54	n.a.	BMB*
Total:			263.484	216.890	100.00	0.000	

default/integration

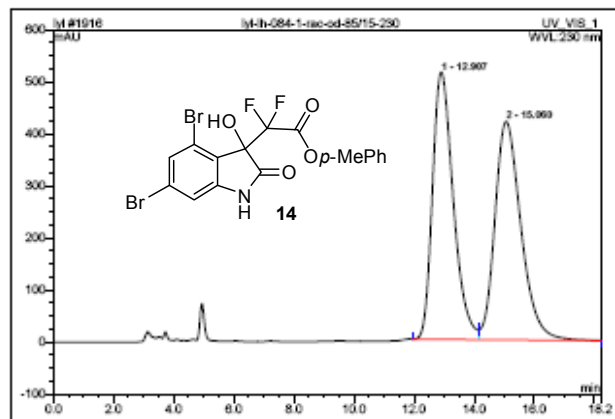
Chromeleon (c) Dionex 1996-2006  
 Version 6.80 (SR8a Build 2643 (158225))

Operator: dell Timebase: U-3000 Sequence: lyl

Page 1-1  
 2011-7-21 10:08

1916 lyl-lh-084-1-*rac*-od-85/15-230

Sample Name:	lyl-lh-084-1- <i>rac</i> -od-85/15-230	Injection Volume:	20.0
Vial Number:	898	Channel:	UV_VIS_1
Sample Type:	standard	Wavelength:	290
Control Program:	Liu Yunlin	Bandwidth:	n.a.
Quantif. Method:	lyl	Dilution Factor:	1.0000
Recording Time:	2011-7-21 9:57	Sample Weight:	1.0000
Run Time (min):	18.20	Sample Amount:	1.0000



No.	Ret. Time min	Peak Name	Height mAU	Area mAU*min	Rel. Area %	Amount	Type
1	12.91	n.a.	513.660	410.647	49.32	n.a.	BM
2	15.05	n.a.	419.610	421.995	50.68	n.a.	MB
Total:			933.270	832.642	100.00	0.000	

default/integration

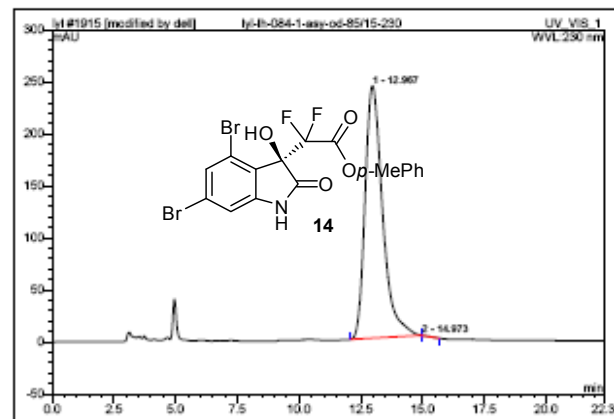
Chromeleon (c) Dionex 1996-2006  
 Version 6.80 (SR8a Build 2643 (158225))

Operator: dell Timebase: U-3000 Sequence: lyl

Page 1-1  
 2011-7-21 10:09

1915 lyl-lh-084-1-*asy*-od-85/15-230

Sample Name:	lyl-lh-084-1- <i>asy</i> -od-85/15-230	Injection Volume:	20.0
Vial Number:	898	Channel:	UV_VIS_1
Sample Type:	standard	Wavelength:	290
Control Program:	Liu Yunlin	Bandwidth:	n.a.
Quantif. Method:	lyl	Dilution Factor:	1.0000
Recording Time:	2011-7-21 9:33	Sample Weight:	1.0000
Run Time (min):	22.52	Sample Amount:	1.0000



No.	Ret. Time min	Peak Name	Height mAU	Area mAU*min	Rel. Area %	Amount	Type
1	12.97	n.a.	242.307	199.121	99.98	n.a.	BMB*
2	14.97	n.a.	0.003	0.033	0.02	n.a.	BMB*
Total:			242.310	199.154	100.00	0.000	

default/integration

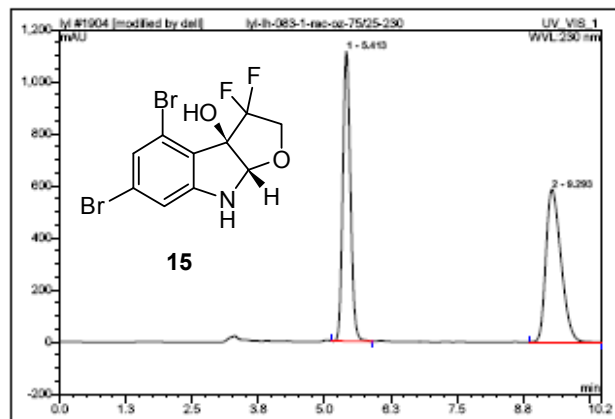
Chromeleon (c) Dionex 1996-2006  
 Version 6.80 (SR8a Build 2643 (158225))

Operator: dell Timebase: U-3000 Sequence: yl

Page 1-1  
 2011-7-19 11:41

1904 Iyl-Ih-083-1-raz-oz-75/25-230

Sample Name:	Iyl-Ih-083-1-raz-oz-75/25-230	Injection Volume:	20.0
Vial Number:	898	Channel:	UV_VIS_1
Sample Type:	standard	Wavelength:	290
Control Program:	Liu Yunlin	Bandwidth:	n.a.
Quantif. Method:	Iyl	Dilution Factor:	1.0000
Recording Time:	2011-7-19 23:18	Sample Weight:	1.0000
Run Time (min):	10.21	Sample Amount:	1.0000



No.	Ret. Time min	Peak Name	Height mAU	Area mAU*min	Rel. Area %	Amount	Type
1	5.41	n.a.	1112.617	186.173	49.09	n.a.	BMB*
2	9.29	n.a.	886.678	193.057	50.91	n.a.	BMB
Total:			1699.295	379.240	100.00	0.000	

default/Integration

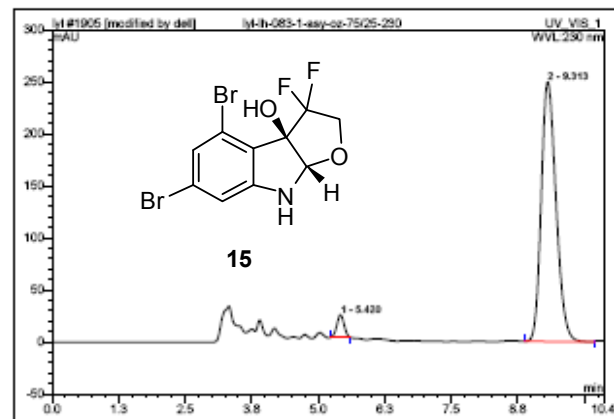
Chromeleon (c) Dionex 1996-2006  
 Version 6.80 (SR6a Build 2643 (158225))

Operator: dell Timebase: U-3000 Sequence: yl

Page 1-2  
 2011-7-19 11:41

1905 Iyl-Ih-083-1-asy-oz-75/25-230

Sample Name:	Iyl-Ih-083-1-asy-oz-75/25-230	Injection Volume:	20.0
Vial Number:	898	Channel:	UV_VIS_1
Sample Type:	standard	Wavelength:	290
Control Program:	Liu Yunlin	Bandwidth:	n.a.
Quantif. Method:	Iyl	Dilution Factor:	1.0000
Recording Time:	2011-7-19 23:28	Sample Weight:	1.0000
Run Time (min):	10.58	Sample Amount:	1.0000



No.	Ret. Time min	Peak Name	Height mAU	Area mAU*min	Rel. Area %	Amount	Type
1	5.42	n.a.	21.555	3.402	4.06	n.a.	BMB*
2	9.31	n.a.	249.299	80.451	95.94	n.a.	BMB
Total:			270.854	83.853	100.00	0.000	

default/Integration

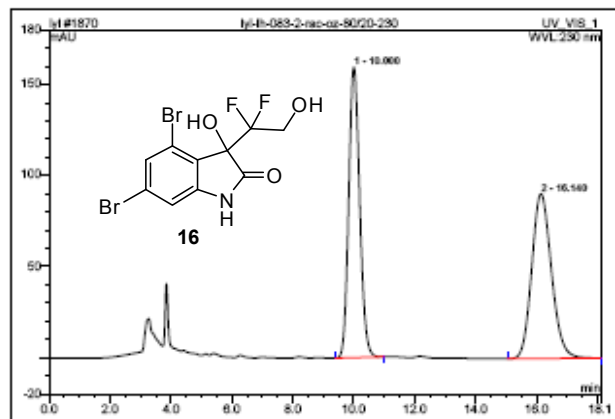
Chromeleon (c) Dionex 1996-2006  
 Version 6.80 (SR6a Build 2643 (158225))

Operator: dell Timebase: U-3000 Sequence: yl

Page 1-1  
 2011-7-17 10:26

1870 Iyl-Ih-083-2-~~rac~~-oz-80/20-230

Sample Name:	Iyl-Ih-083-2- <del>rac</del> -oz-80/20-230	Injection Volume:	20.0
Vial Number:	898	Channel:	UV_VIS_1
Sample Type:	standard	Wavelength:	290
Control Program:	Liu Yunlin	Bandwidth:	n.a.
Quantif. Method:	Iyl	Dilution Factor:	1.0000
Recording Time:	2011-7-17 10:48	Sample Weight:	1.0000
Run Time (min):	18.09	Sample Amount:	1.0000



No.	Ret.Time min	Peak Name	Height mAU	Area mAU*min	Rel.Area %	Amount	Type
1	10.00	n.a.	155.393	66.391	49.56	n.a.	BMB
2	16.14	n.a.	90.411	67.576	50.44	n.a.	BMB
Total:			245.804	133.967	100.00	0.000	

default/integration

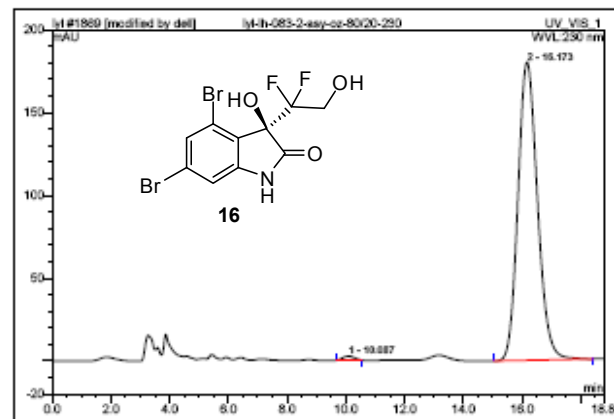
Chromeleon (c) Dionex 1996-2006  
 Version 6.80 (SR8a Build 2643 (158225))

Operator: dell Timebase: U-3000 Sequence: yl

Page 1-1  
 2011-7-17 10:26

1869 Iyl-Ih-083-2-~~asy~~-oz-80/20-230

Sample Name:	Iyl-Ih-083-2- <del>asy</del> -oz-80/20-230	Injection Volume:	20.0
Vial Number:	898	Channel:	UV_VIS_1
Sample Type:	standard	Wavelength:	290
Control Program:	Liu Yunlin	Bandwidth:	n.a.
Quantif. Method:	Iyl	Dilution Factor:	1.0000
Recording Time:	2011-7-17 10:24	Sample Weight:	1.0000
Run Time (min):	18.77	Sample Amount:	1.0000



No.	Ret.Time min	Peak Name	Height mAU	Area mAU*min	Rel.Area %	Amount	Type
1	10.09	n.a.	2.408	1.102	0.79	n.a.	BMB*
2	16.17	n.a.	180.066	138.212	99.21	n.a.	BMB
Total:			182.473	139.314	100.00	0.000	

default/integration

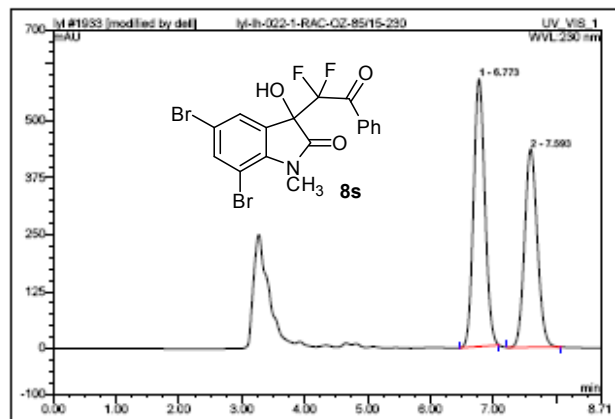
Chromeleon (c) Dionex 1996-2006  
 Version 6.80 (SR8a Build 2643 (158225))

Operator: dell Timebase: U-3000 Sequence: lyl

Page 1-1  
 2011-7-31 9:00

1933 lyl-lh-022-1-RAC-OZ-85/15-230

Sample Name:	lyl-lh-022-1-RAC-OZ-85/15-230	Injection Volume:	20.0
Vial Number:	898	Channel:	UV_VIS_1
Sample Type:	standard	Wavelength:	290
Control Program:	Liu Yunlin	Bandwidth:	n.a.
Quantif. Method:	lyl	Dilution Factor:	1.0000
Recording Time:	2011-7-31 20:38	Sample Weight:	1.0000
Run Time (min):	8.71	Sample Amount:	1.0000



No.	Ret.Time min	Peak Name	Height mAU	Area mAU*min	Rel.Area %	Amount	Type
1	6.77	n.a.	587.947	122.755	54.50	n.a.	BMB*
2	7.59	n.a.	435.544	102.466	45.50	n.a.	BMB*
Total:			1023.491	225.221	100.00	0.000	

default/integration

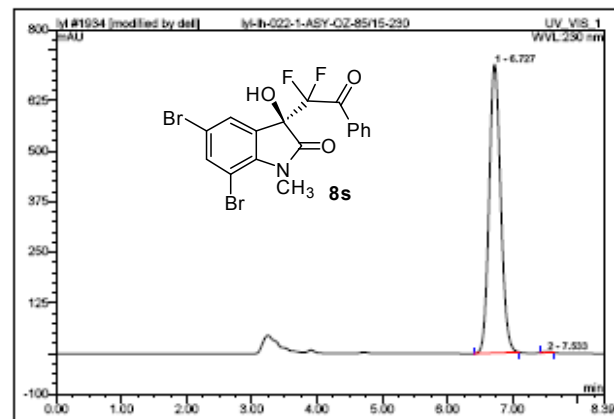
Chromeleon (c) Dionex 1996-2006  
 Version 6.80 (SR8a Build 2643 (158225))

Operator: dell Timebase: U-3000 Sequence: lyl

Page 1-2  
 2011-7-31 9:01

1934 lyl-lh-022-1-ASY-OZ-85/15-230

Sample Name:	lyl-lh-022-1-ASY-OZ-85/15-230	Injection Volume:	20.0
Vial Number:	898	Channel:	UV_VIS_1
Sample Type:	standard	Wavelength:	290
Control Program:	Liu Yunlin	Bandwidth:	n.a.
Quantif. Method:	lyl	Dilution Factor:	1.0000
Recording Time:	2011-7-31 20:48	Sample Weight:	1.0000
Run Time (min):	8.88	Sample Amount:	1.0000



No.	Ret.Time min	Peak Name	Height mAU	Area mAU*min	Rel.Area %	Amount	Type
1	6.73	n.a.	712.688	145.803	99.79	n.a.	BMB*
2	7.53	n.a.	2.319	0.312	0.21	n.a.	BMB*
Total:			715.007	146.115	100.00	0.000	

default/integration

Chromeleon (c) Dionex 1996-2006  
 Version 6.80 (SR8a Build 2643 (158225))