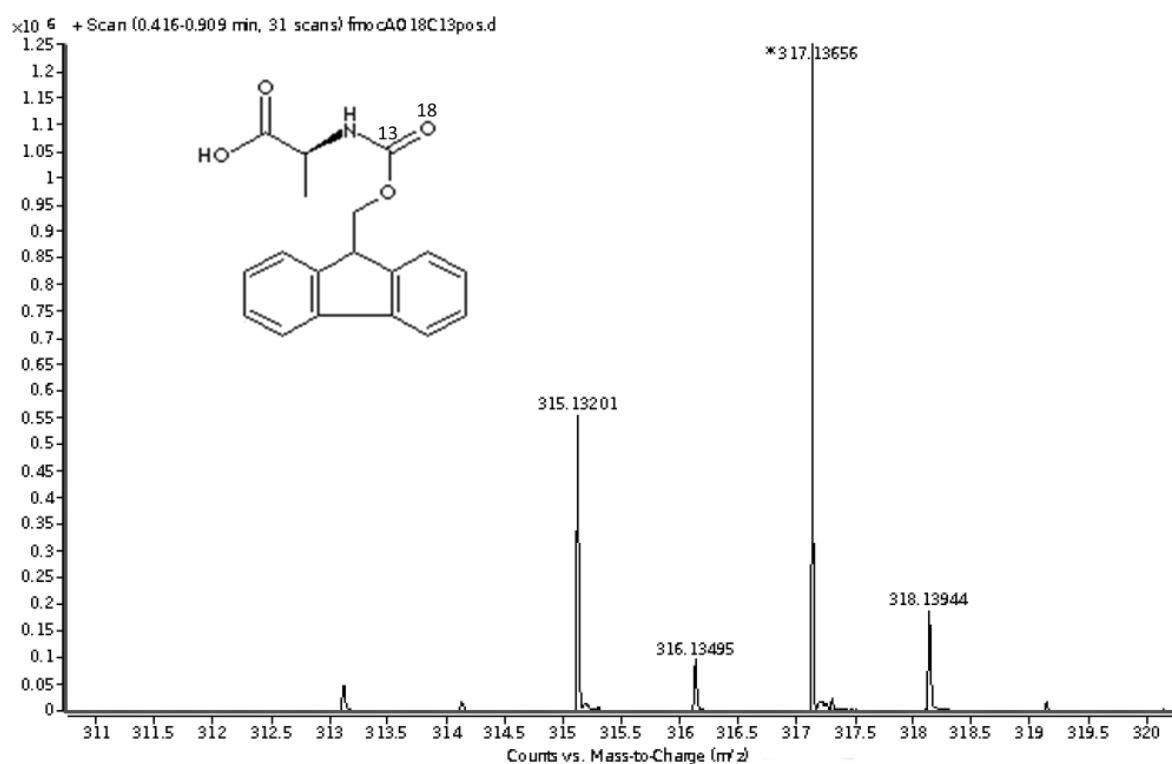
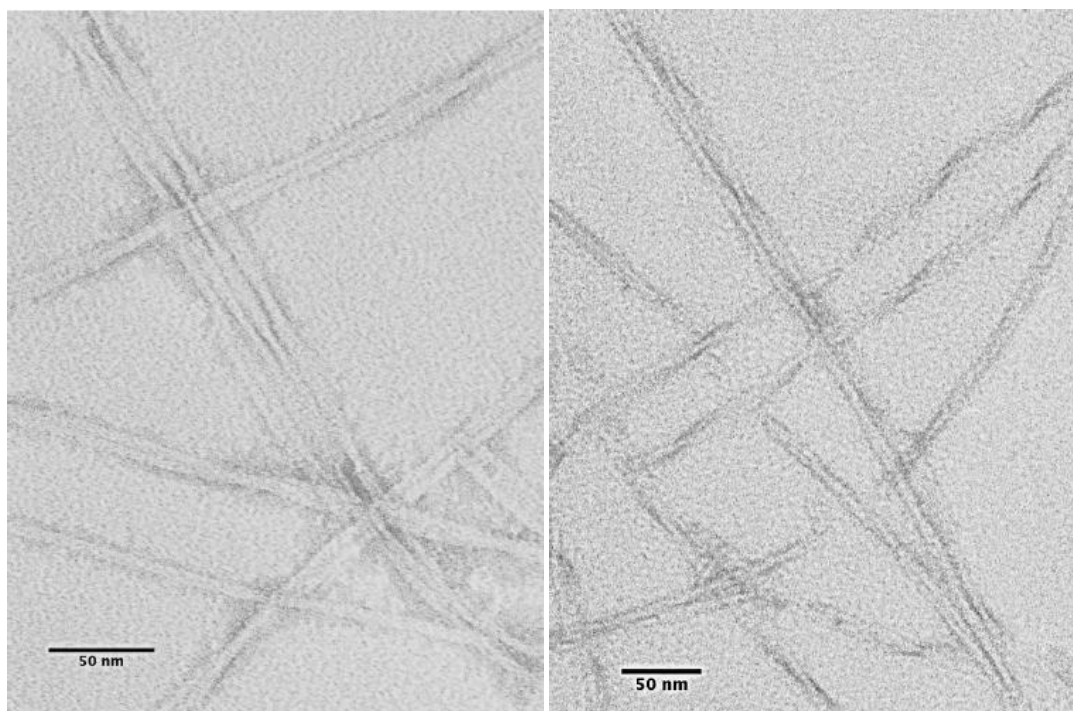


Supporting Information: **Local orientational disorder in peptide fibrils probed by a combination of residue-specific  $^{13}\text{C}$ - $^{18}\text{O}$  labelling, polarised infrared spectroscopy and molecular combing.** J. C. Rodríguez-Pérez *et al.*

Mass spectrum of  $^{13}\text{C}$ = $^{18}\text{O}$  labelled Fmoc-alanine:



### Higher magnification TEM



TEM images from fibrils formed from YTIAA\*LLSPYSGGRADS (left) and YTIAALLSPYSGGRA\*DS (right)