

Supplementary information

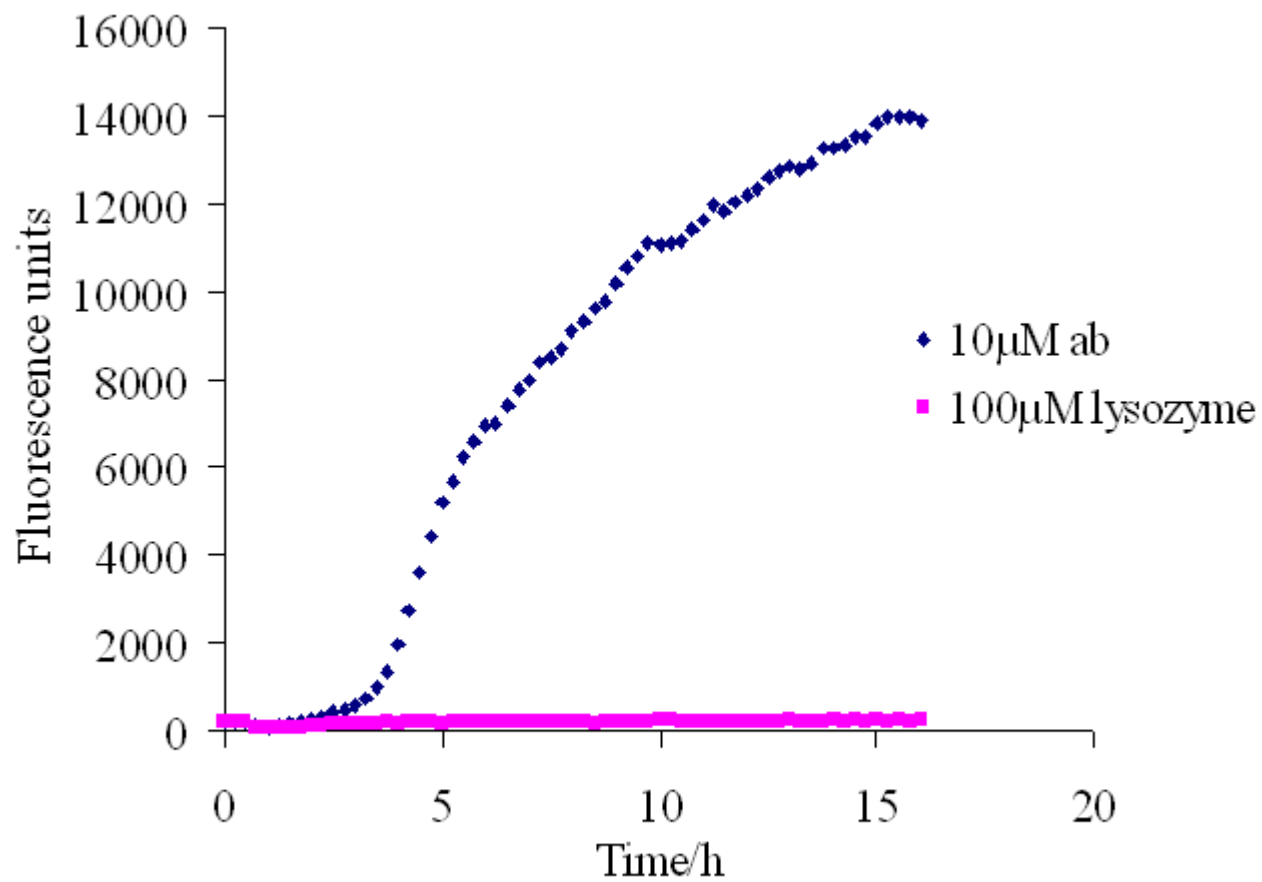
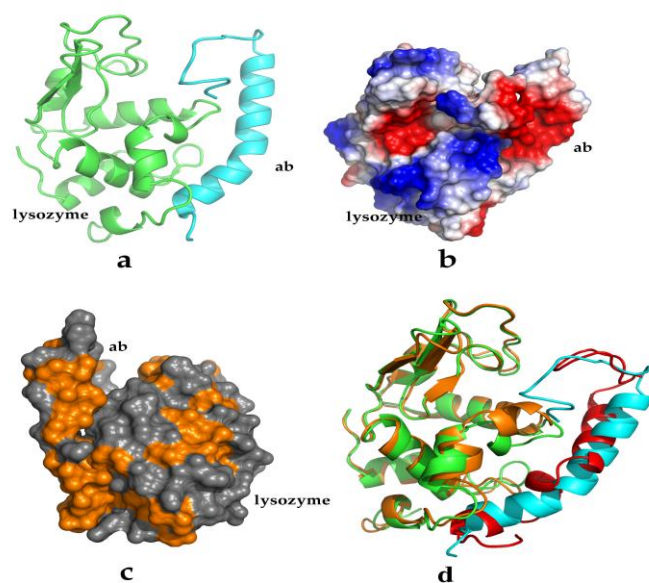
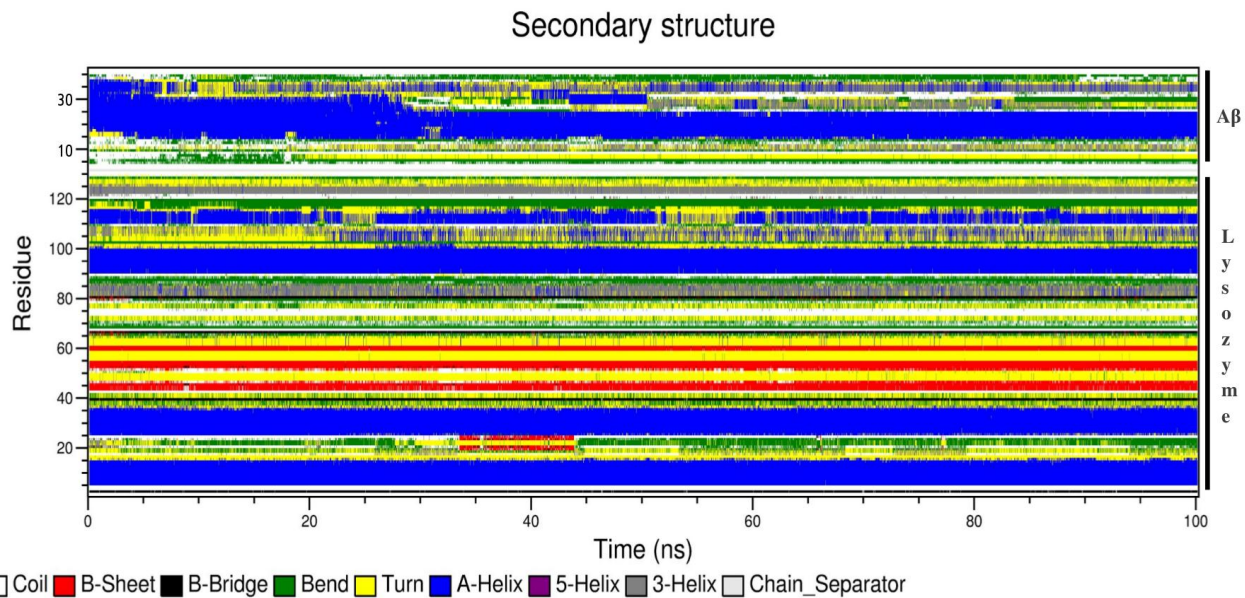


Figure S1. ThT kinetics of A $\beta$  and Lysozyme at 37 °C.



**Figure S2.** (a) The proposed complex of A $\beta$  peptide(green) and Lysozyme(cyan) after docking. (b-c) Potential and hydrophobic surface of the A $\beta$  peptide - Lysozyme complex: red and blue represent negative and positive charged residues and orange/gray denote hydrophobic/hydrophilic residues, respectively. (d) Superimposition of Lysozyme-A $\beta$  complex before (Lysozyme in green color and A $\beta$  in cyan color) and after (Lysozyme in orange color and A $\beta$  peptide in red color) 100ns molecular dynamic simulations.



**Figure S3.** The secondary structure components of A $\beta$  and Lysozyme in the course of a 100ns MD simulation.