

Supporting Information

Inducing alignment of cyclic peptide nanotubes through the use of structured ionic liquids

Nolene Byrne,^{*a} Donna Menzies^a, Nicolas Goujon^a, and Maria Forsyth^b

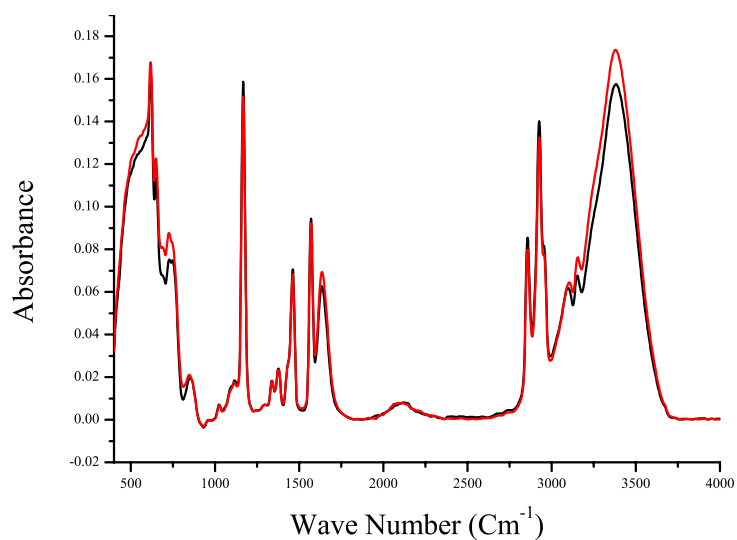


Figure S1: FTIR spectrum of OMImCl+15wt% H₂O at room temperature (red line) and 35°C (black line)

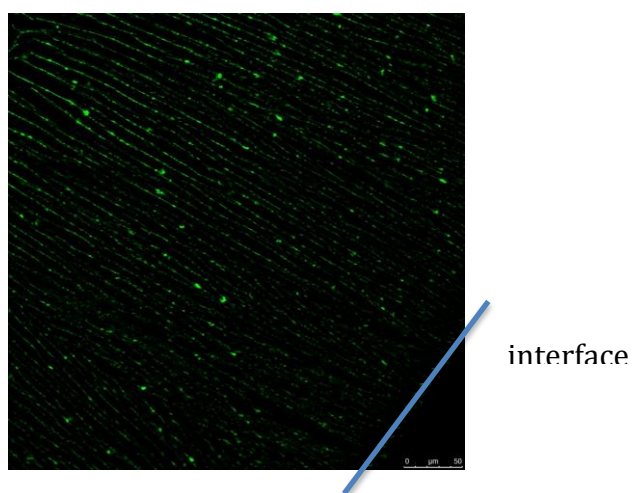


Figure S2: confocal image of OMImCl+15wt% H₂O + cyclic peptide (4mg) showing alignment growing from the interface

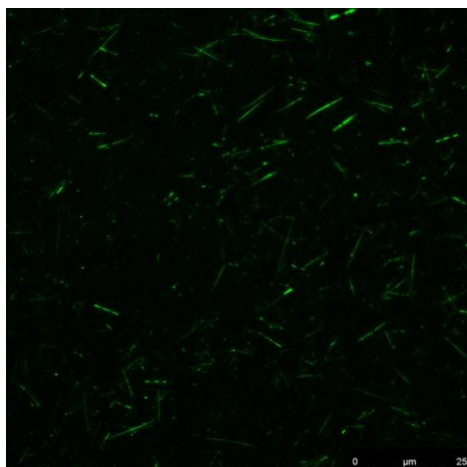


Figure S3: Confocal image of BMImCl 15wt% H₂O + cyclic peptide (4mg), self assembly has occurred but no alignment is observed.