

In-situ Observation of Electrolytic H₂ Evolution Adjacent to Gold Cathodes

Y. Liu^a and S. J. Dillon^a

^a Department of Materials Science and Engineering, University of Illinois

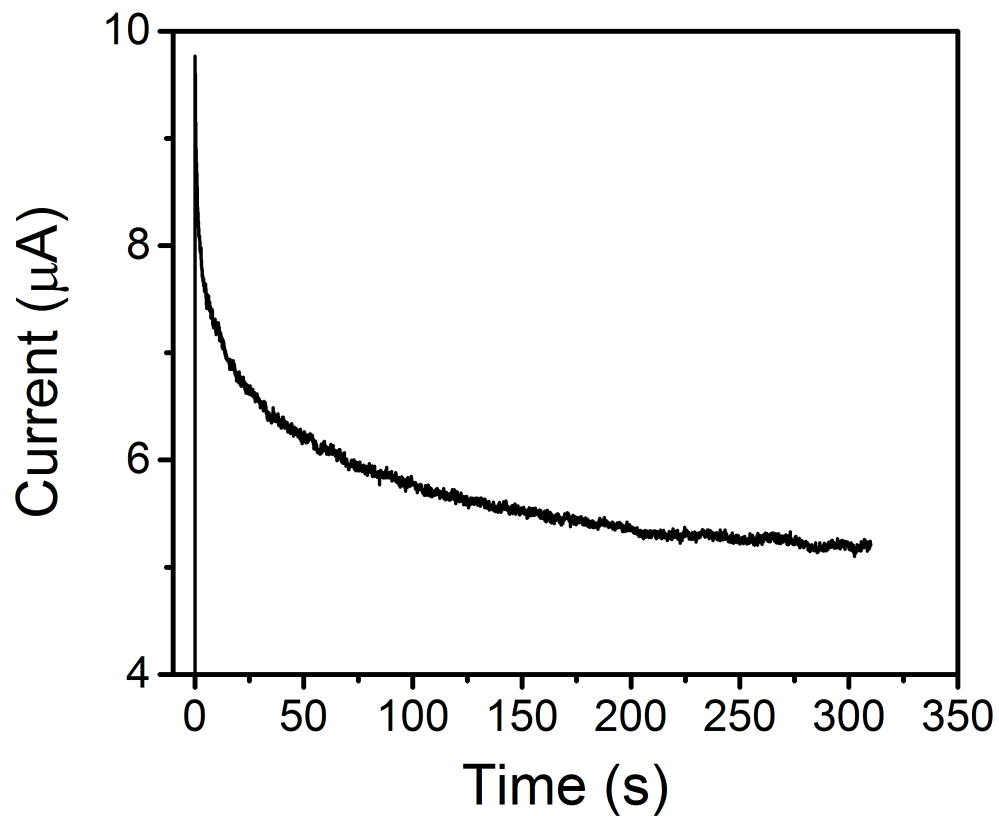


Fig. S1: Current response associated with the constant voltage (-2 V) in-situ test described in the main text.

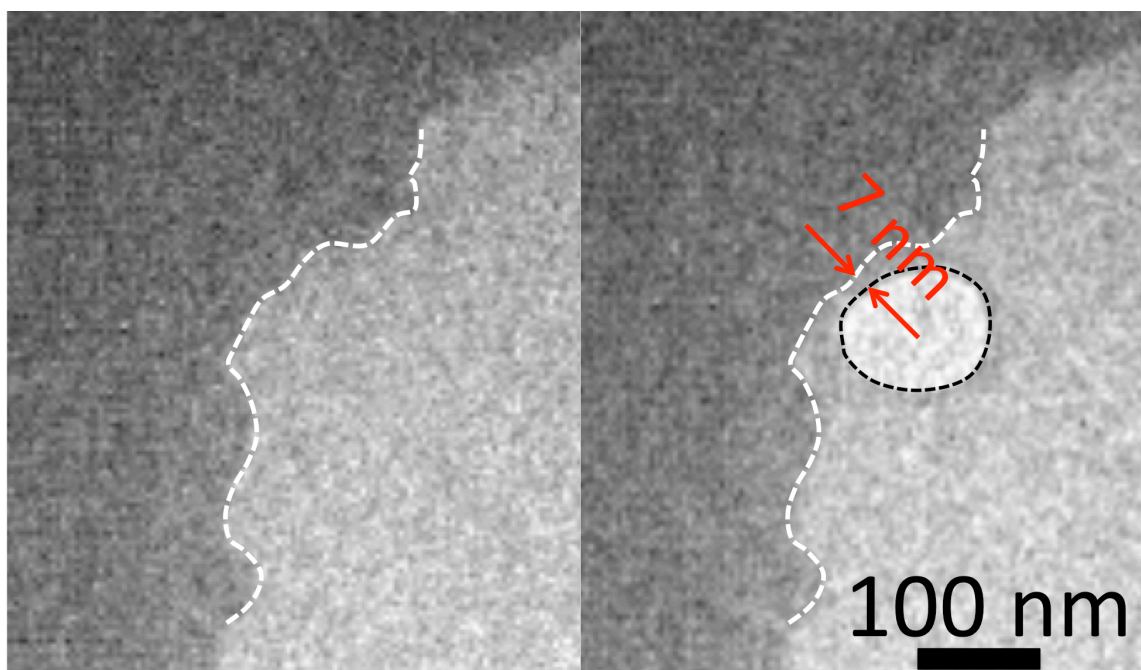


Fig. S2: Time-lapse images of a bubble nucleating adjacent to the Au electrode, just before and after nucleation. The surface of the gold and the bubble are outlined to highlight the spacing between the two objects

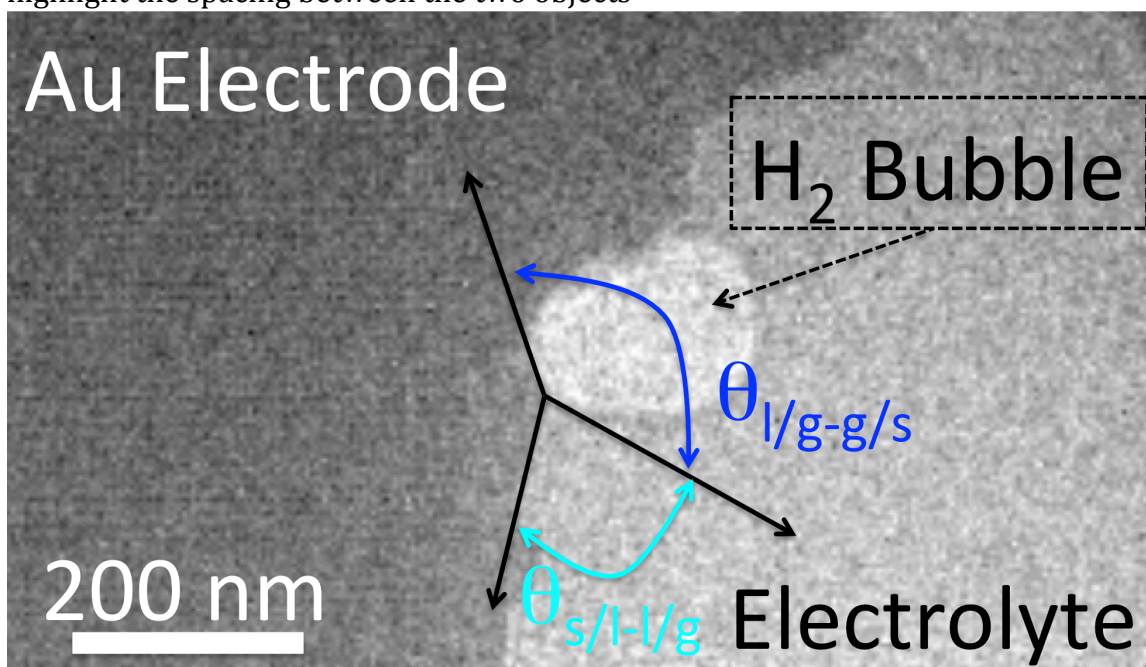


Fig. S3: In-situ image of gas bubble evolution showing how the dihedral angles (θ) associated with the liquid/gas-gas/solid (l/g-g) and solid/liquid-liquid/gas (s/g) were measured.