

Supplementary Information

Surfactant free superparamagnetic iron oxide nanoparticles for stable ferrofluids in physiological solutions

K. Mandel,^{*a} M. Straßer,^{a,c} T. Granath,^b S. Dembski^a and G. Sextl^{a,c}

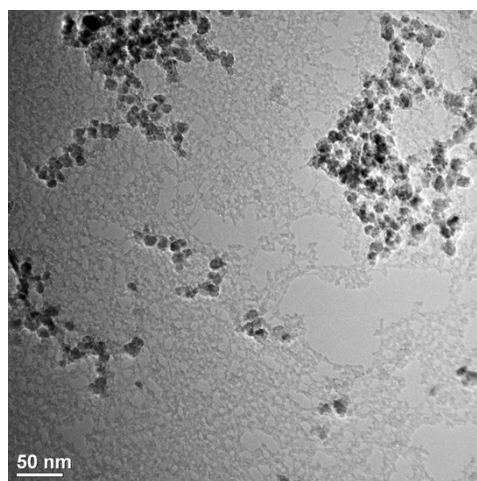


Fig. S1: As described in the experimental section, besides the particles, forming the ferrofluid, which are found in the middle-layer phase of the centrifuge tube (and which are described in the paper), there was also an upper, clearer layer and a gel-like bottom sediment observed in the tube. This figure shows that the bottom layer phase (the gel-like layer) consists of iron oxide nanoparticles (dark spots) enclosed in network of condensed silica (bright, web-like structure).