

# **On the polymorphs of pentafluorophenol and its 2:1 co-crystal with pentafluoroaniline**

**Maria Gdaniec**

*Faculty of Chemistry, A. Mickiewicz University, 60–780 Poznań, Poland; E-mail: [magdan@amu.edu.pl](mailto:magdan@amu.edu.pl)*

**Supplementary Material (ESI)**  
(2 pages)

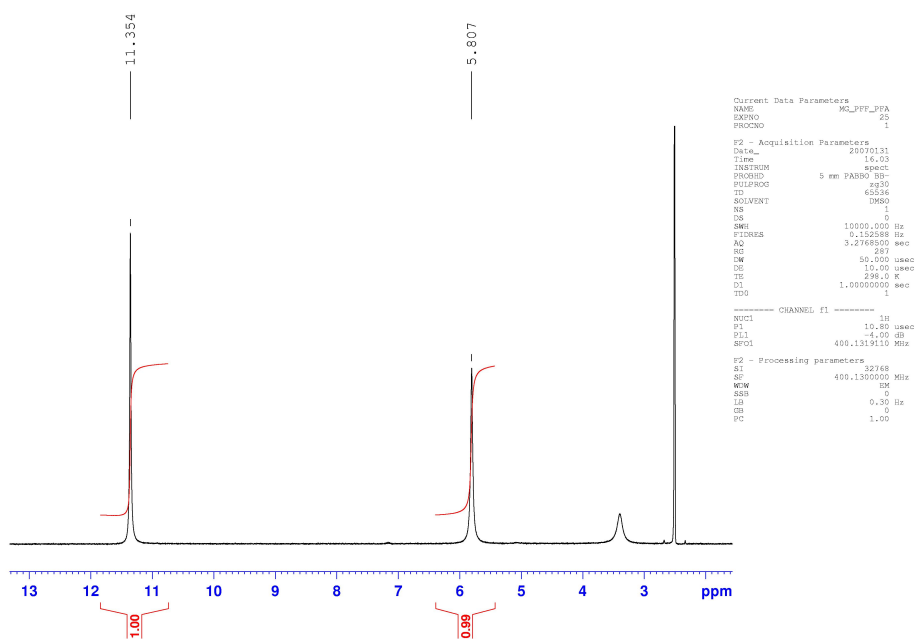


Fig. 1.  $^1\text{H}$  NMR spectrum of pentafluorophenol/pentafluoroaniline co-crystals dissolved in  $\text{DMSO-d}_6$

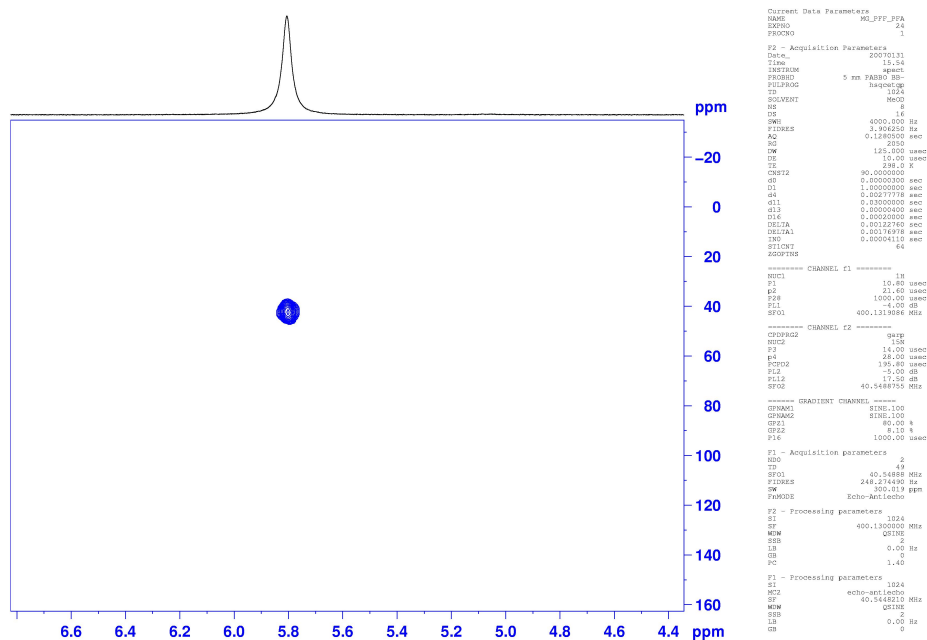


Fig. 2.  $^1\text{H}$ - $^{15}\text{N}$  HSQC spectrum of pentafluorophenol/pentafluoroaniline co-crystals dissolved in  $\text{DMSO-d}_6$ .

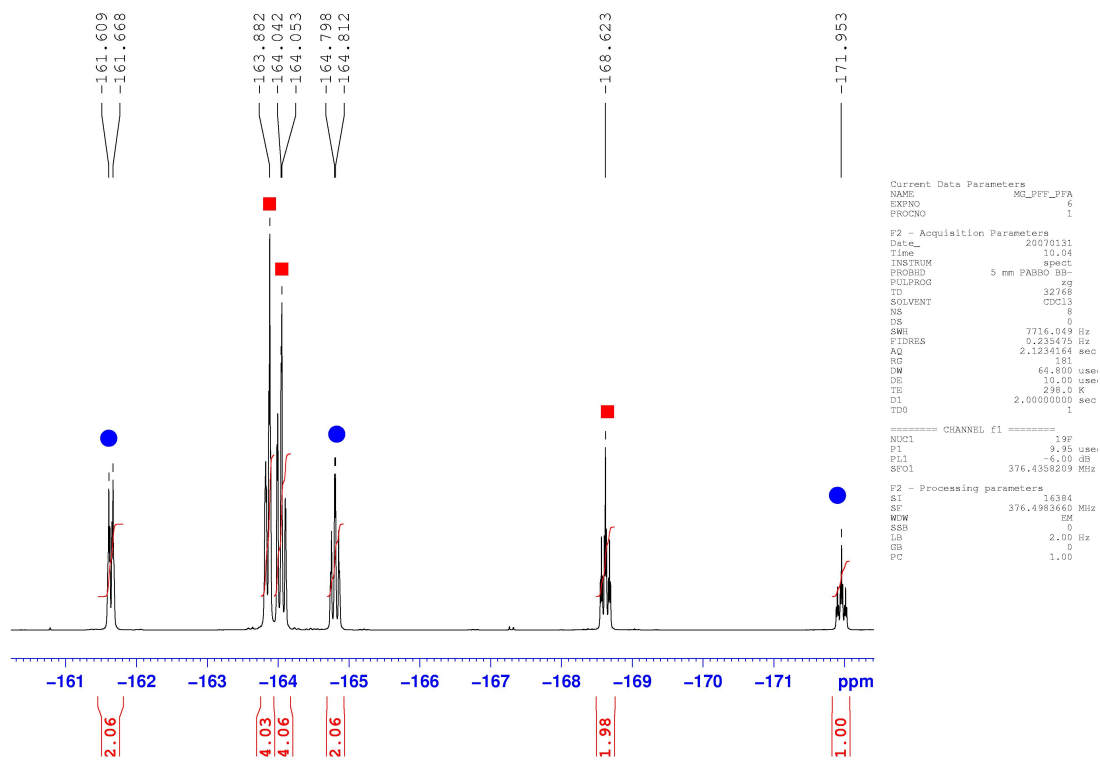


Fig. 3.  $^{19}\text{F}$  NMR spectra of pentafluorophenol/pentafluoroaniline co-crystals dissolved in  $\text{CDCl}_3$ . Signals from pentafluorophenol (red circles) and pentafluoroaniline (blue squares) were found in the 2:1 ratio, respectively.