

Fig. S1 (a) High magnification SEM image of the sample prepared in glycerol/water ratio 1:2 at 200 °C for 2 h; (b) High magnification SEM image of the scabbled cubic Cu mesocrystals prepared for 12 h; (c) TEM image of the dispersible small Cu particles prepared for 12 h. (d) TEM image of the pearl-chain-like structure Cu.

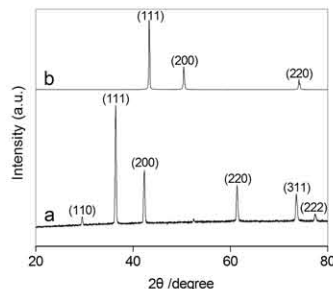


Fig. S2 (a) XRD of the sample obtained in glycerol/water ratio 1:2 at 100 °C for 48 h; (b) XRD of the sample (a) reduced in glycerol/water ratio 1:2 at 200 °C for 2 h.

19

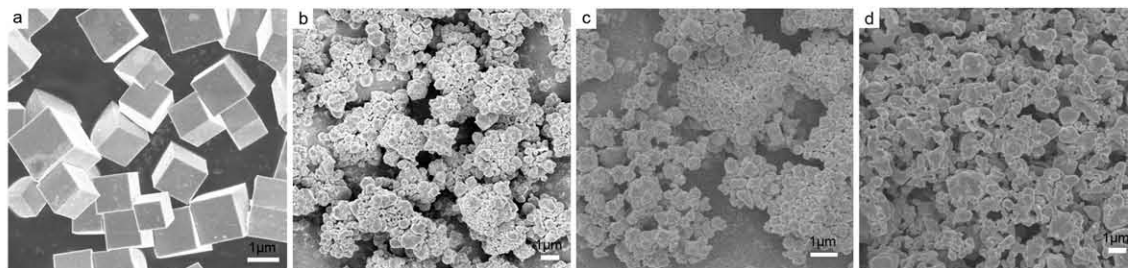


Fig. S3 (a-c) SEM images of the sample prepared for different times in glycerol/water ratio 2:1: (a) 30 min; (b) 2 h; (c) 12 h. (d) SEM image of the sample prepared in absolute glycerol.