
Supplementary Material (ESI) for CrystEngComm
This journal is © The Royal Society of Chemistry 2010

Electronic supplementary information (ESI)

Anion-Dependent Construction of Copper(I/II)-1,2,4,5-tetra(4-pyridyl)benzene Frameworks

Sheng Hu,^{ab} Ze-Ming Zhang,^a Zhao-Sha Meng,^a Zhuo-Jia Lin*,^a and Ming-Liang Tong*^a

^a *Key Laboratory of Bioinorganic and Synthetic Chemistry of Ministry of Education, State Key Laboratory of Optoelectronic Materials and Technologies, School of Chemistry & Chemical Engineering, Sun Yat-Sen University, Guangzhou 510275, China. E-mail: tongml@mail.sysu.edu.cn*

^b *Faculty of Chemical Engineering and Light Industry, Guangdong University of Technology, Guangzhou 510006, China.*

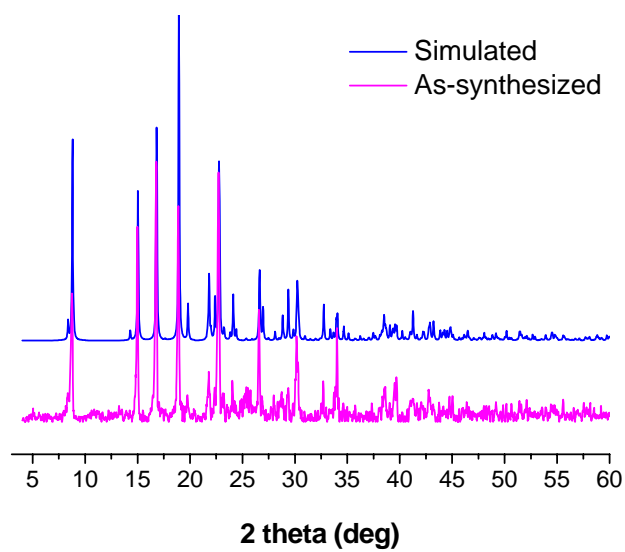


Fig. S1. X-ray powder diffraction (XRPD) patterns of **1**.

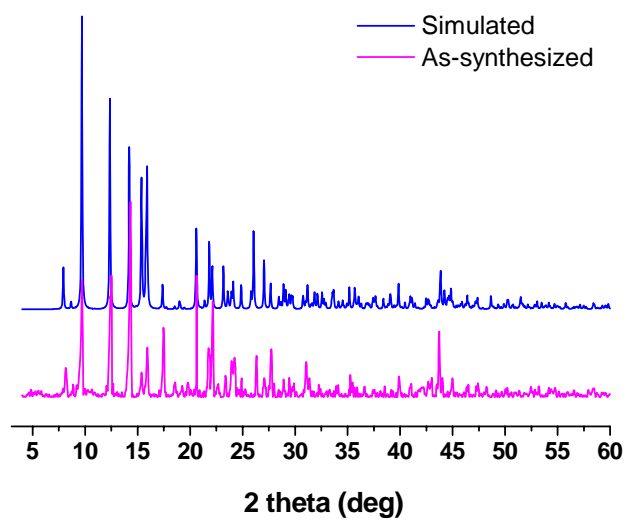


Fig. S1. X-ray powder diffraction (XRPD) patterns of **3**.

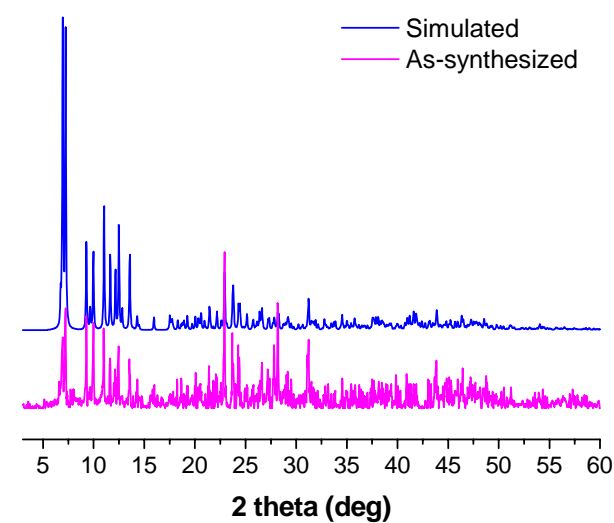


Fig. S1. X-ray powder diffraction (XRPD) patterns of **4**.