

# Controlled Synthesis and Tunable Properties of Hematite Hierarchical Structures in a Dual-Surfactant System

*Lili Wang and Lian Gao\**

State Key Laboratory of High Performance Ceramics and Superfine  
Microstructure, Shanghai Institute of Ceramics, Chinese Academy of Sciences,  
Shanghai 200050, P. R. China.

\* Corresponding author: Phone: +86-21-52412718; Fax: +86 21 52413122.

E-mail address: liangao@mail.sic.ac.cn

## Supplementary Information

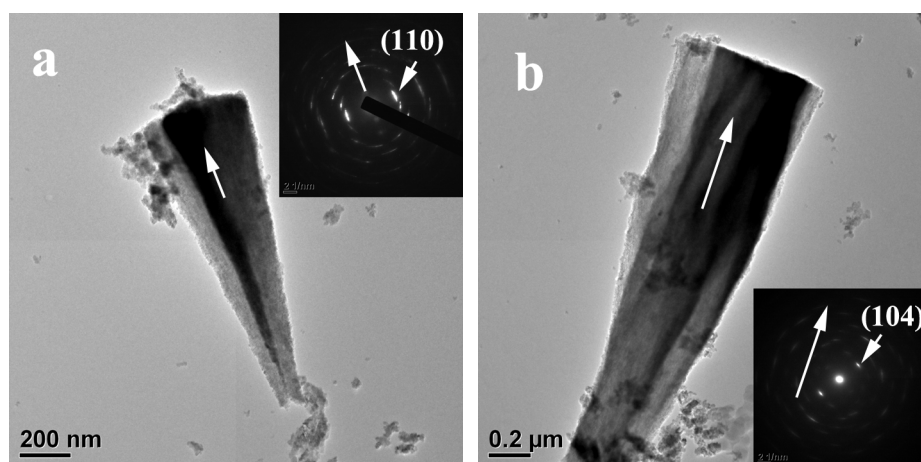


Figure S1. (a) and (b) show the TEM images of the stalactite-like hematite hierarchical structures and their SAED patterns are shown in the insets.

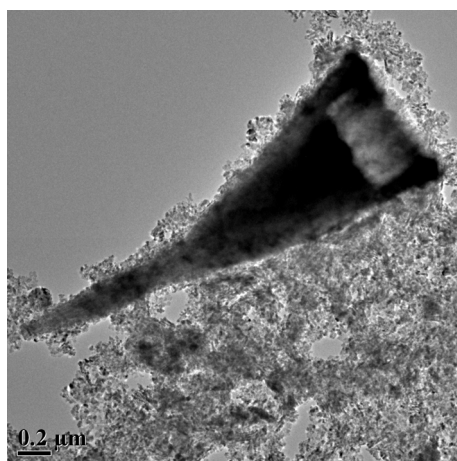


Figure S2. TEM images of an intermediate particle in 7-h sample.

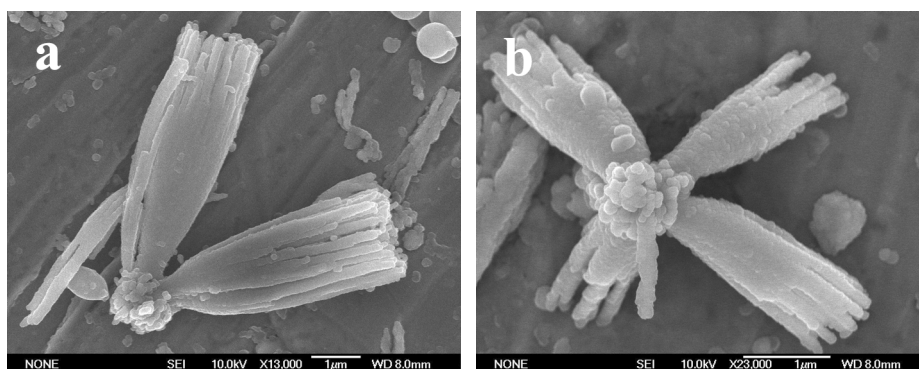


Figure S3. (a) and (b) show the SEM images of the cluster-like morphology.

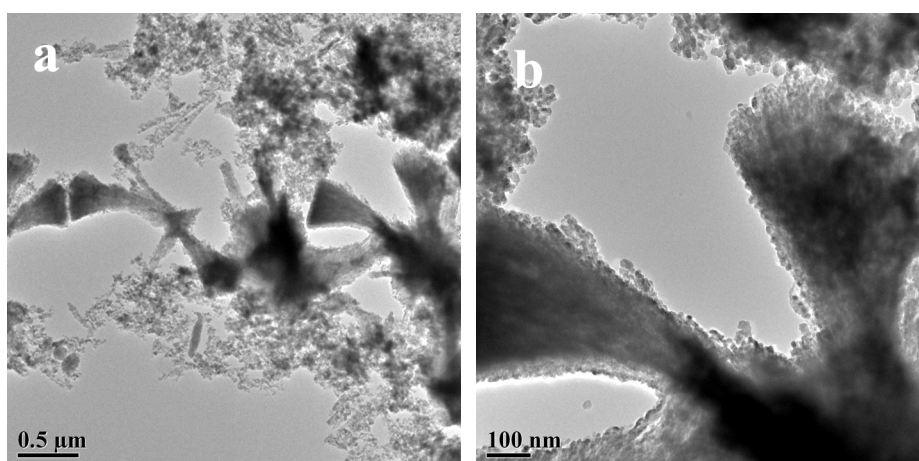


Figure S4. (a) and (b) show the TEM images of the sample obtained by substituting sodium citrate for ammonium citrate.

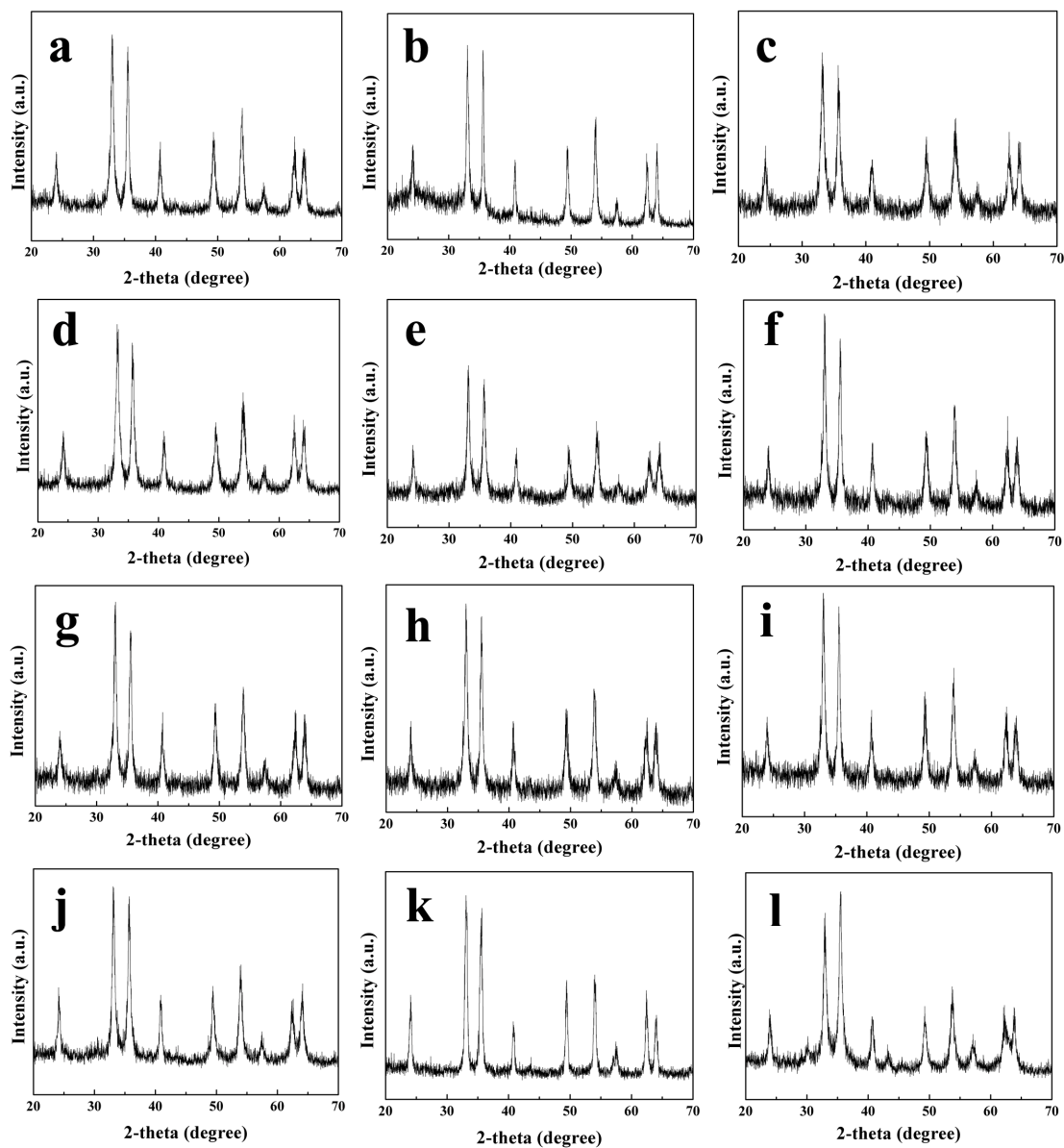


Figure S5. (a) ~ (l) show the XRD patterns of the sample a~l.

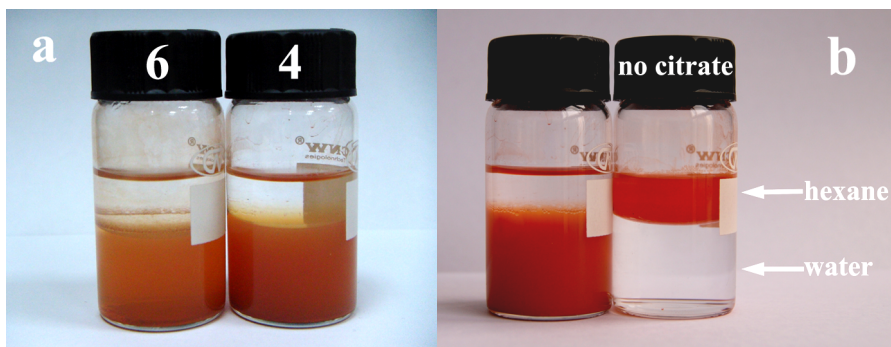


Figure S6. (a) Photograph for dispersion of sample (4) ~ (6) listed in Table 2 stood for 2 days. (b) Photograph for dispersion of sample (4) and sample obtained in our previous work.

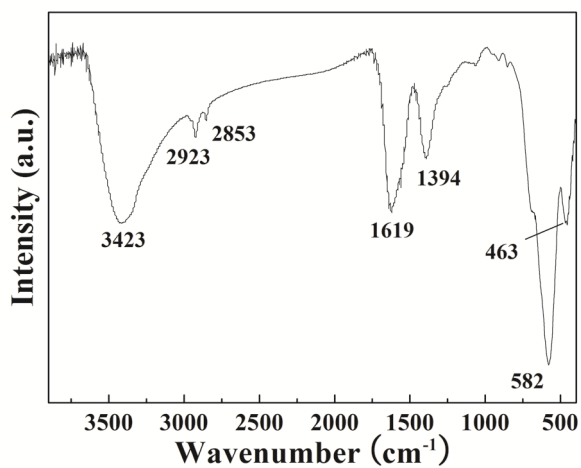


Figure S7. FTIR spectrum of sample 4 listed in Table 2.