

## ELECTRONIC SUPPLEMENTARY INFORMATION

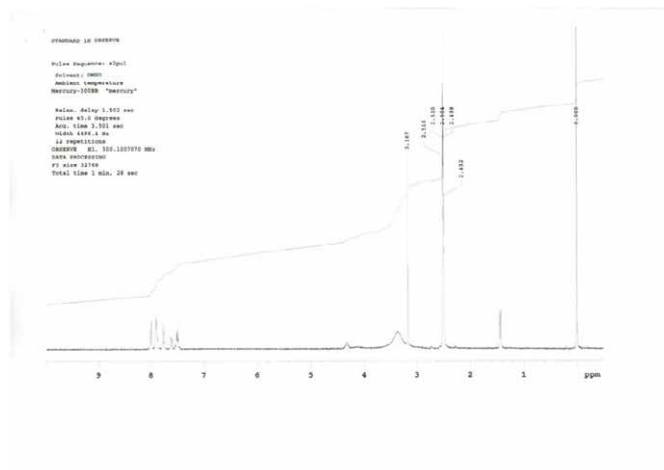
### **Solid-state fluorescence host complex formed by assembly of two-dimensional layered network structure composed of 2,6-naphthalenedicarboxylic acid and 2-naphthylethylamine**

Naoki Shiota<sup>a</sup>, Takahiro Okuno<sup>a</sup>, Takafumi Kinuta<sup>a</sup>, Tomohiro Sato<sup>a</sup>, Reiko Kuroda<sup>b</sup>, Yoshio Matsubara<sup>a\*</sup>, and Yoshitane Imai<sup>a\*</sup>

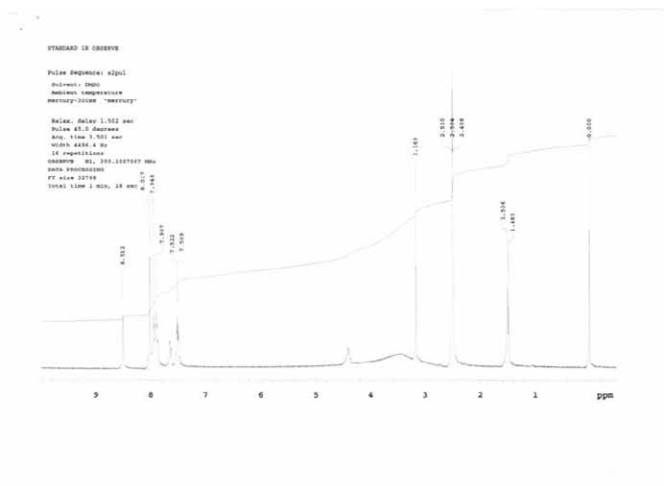
<sup>a</sup>*Department of Applied Chemistry, Faculty of Science and Engineering, Kinki University, 3-4-1 Kowakae, Higashi-Osaka, Osaka 577-8502, Japan.*

<sup>b</sup>*Department of Life Sciences, Graduate School of Arts and Sciences, The University of Tokyo, 3-8-1 Komaba, Meguro-ku, Tokyo 153-8902, Japan.*

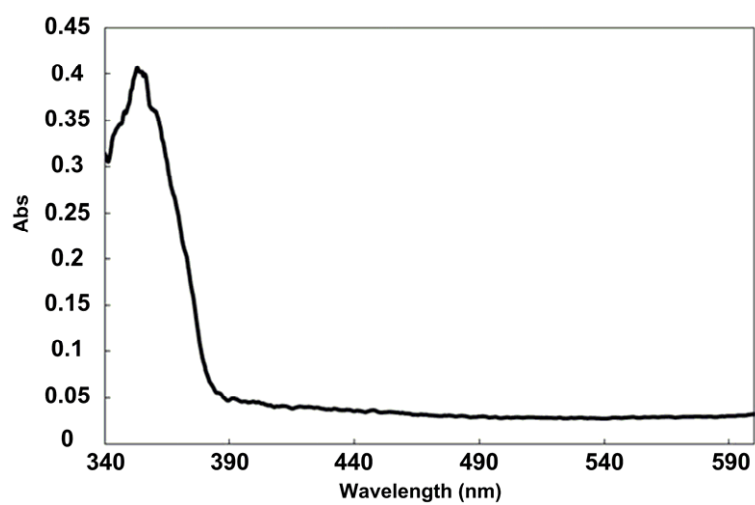
\*Corresponding author. Tel.: +81 06 6730 5880x5241; fax: +81 06 6727 2024;  
e-mail: (Y.I.) [y-imai@apch.kindai.ac.jp](mailto:y-imai@apch.kindai.ac.jp), (Y.M.) [y-matsu@apch.kindai.ac.jp](mailto:y-matsu@apch.kindai.ac.jp)



**Fig. ESI-1**  $^1\text{H}$ -NMR spectrum of complex **II**.



**Fig. ESI-2**  $^1\text{H}$ -NMR spectrum of complex **III**.



**Fig. ESI-3** Optical absorption spectrum (the Kubelka-Munk functions derived from the DRS) of complex **III**.