

Electronic Supplementary Information (ESI)

Ligand geometry-driven formation of different coordination polymers from $\text{Zn}(\text{NO}_3)_2$, 1,4-bpeb and phenylenediacetic acids†

Dong Liu,^a Yu-Jie Chang,^a and Jian-Ping Lang^{*a,b}

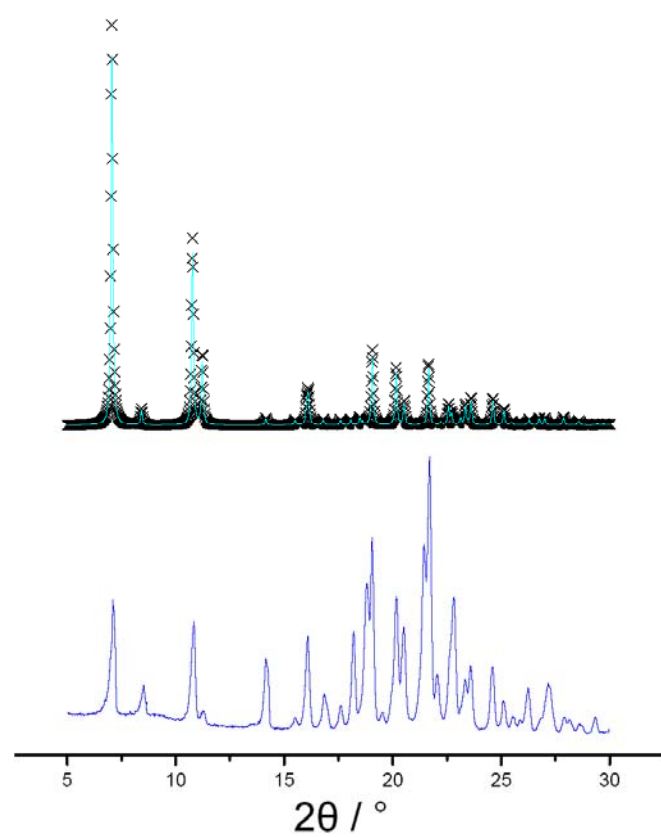
^a College of Chemistry, Chemical Engineering and Materials Science, Suzhou University, Suzhou 215123, P. R. China

^b State Key Laboratory of Coordination Chemistry, Nanjing University, Nanjing 210093, P. R. China

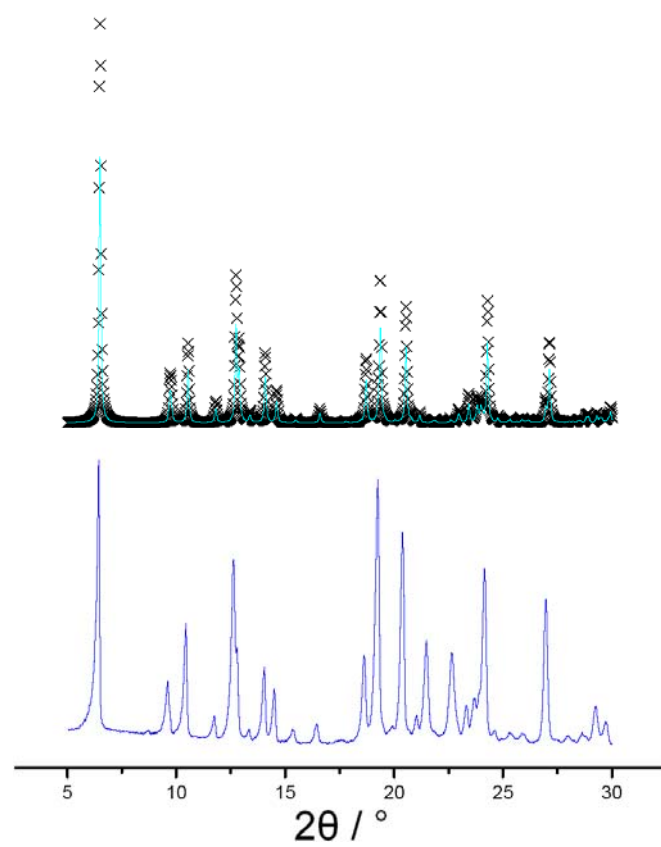
Table of Contents

Fig. S1 (a) Powder XRD patterns of bulk sample of 1 (down) and Rietveld refinement of model determined by single crystal diffraction (upper); (b) Powder XRD patterns of bulk sample of 2 (down) and Rietveld refinement of model determined by single crystal diffraction (upper); (c) Powder XRD patterns of bulk sample of 3 (down) and Rietveld refinement of model determined by single crystal diffraction (upper).....	S3
Fig. S2 PXRD patterns of 1 and its guest-free form.	S5
Fig. S3 The TGA curves for 1 (red), 2 (blue) and 3 (black).....	S6

(a)



(b)



(c)

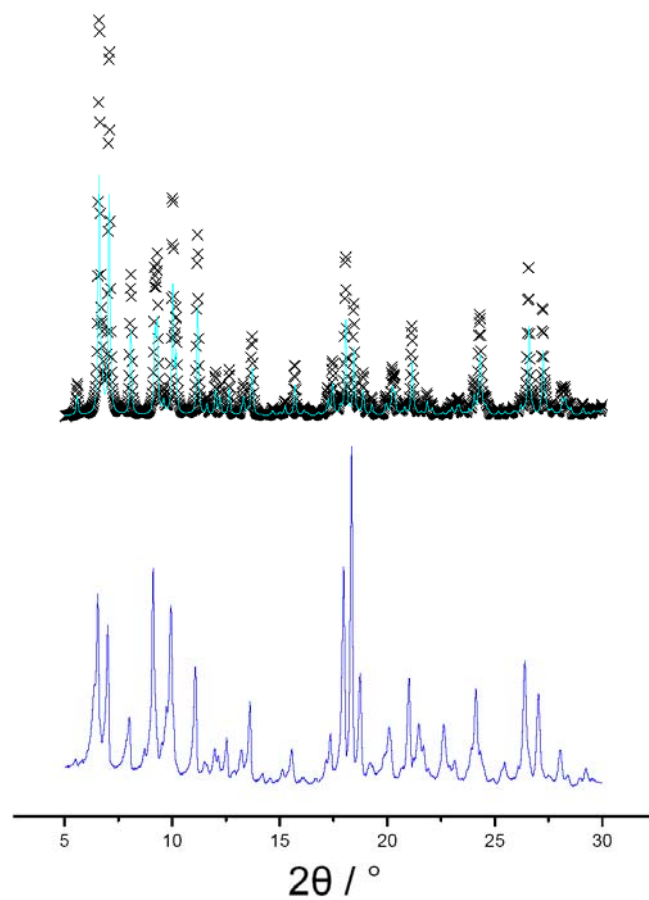


Fig. S1 (a) Powder XRD patterns of bulk sample of **1** (down) and Rietveld refinement of model determined by single crystal diffraction (upper); (b) Powder XRD patterns of bulk sample of **2** (down) and Rietveld refinement of model determined by single crystal diffraction (upper); (c) Powder XRD patterns of bulk sample of **3** (down) and Rietveld refinement of model determined by single crystal diffraction (upper).

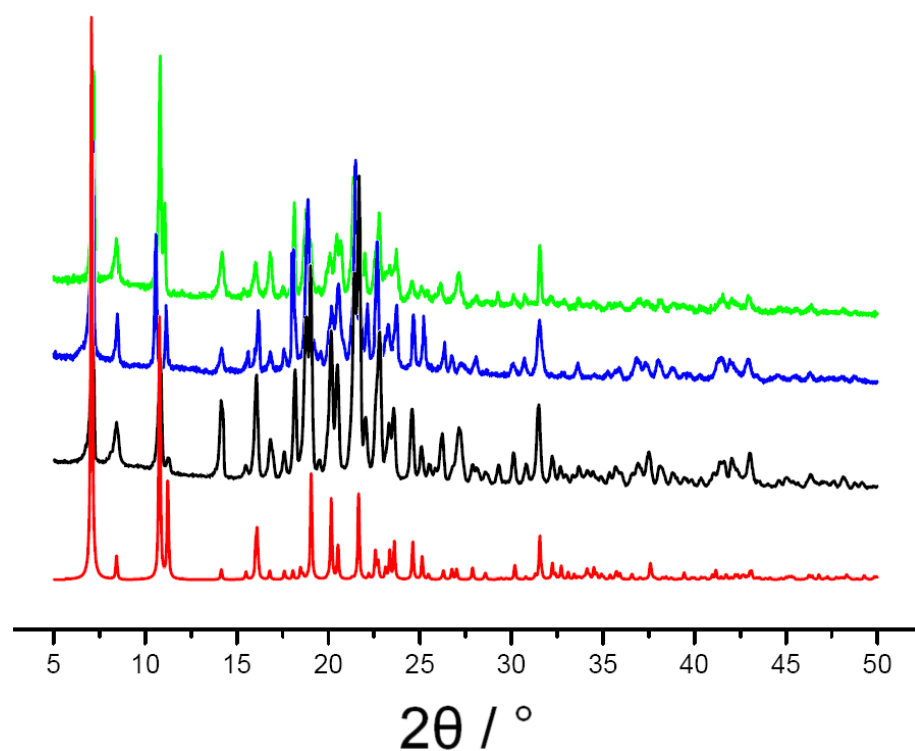


Fig. S2 Powder XRD patterns of **1** and its guest-free form. Red: simulated from single crystal analysis and experimental; Black: as synthesized; Blue: guest-free form of **1** (by heating at 200°C in air for three hours); Green: guest-free form of **1** (under vacuum for three hours).

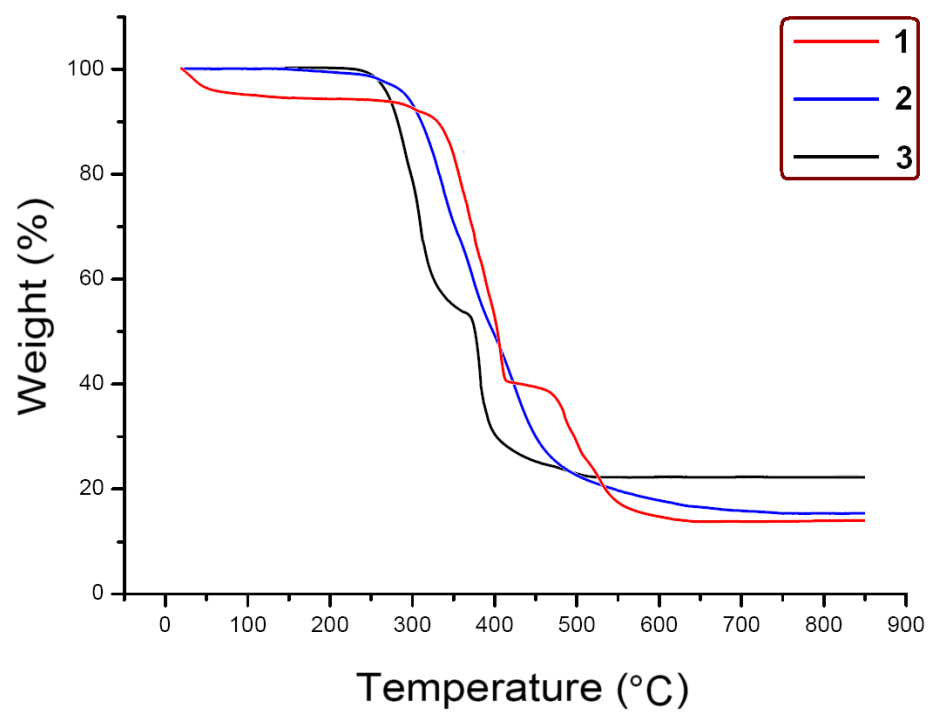


Fig. S3 The TGA curves for **1** (red), **2** (blue) and **3** (black).