

Self-assembly of CdTe QDs into urchin-like microspheres by the assist of long-chain ionic liquid monolayer

Hongchao Ma, Xiangtao Bai and Liqiang, Zheng*

Key Laboratory of Colloid and Interface Chemistry, Shandong University, Ministry of Education, Jinan, 250100, China.

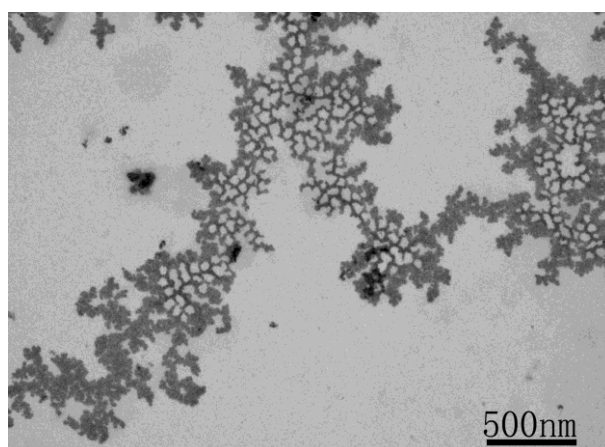


Figure S1. TEM image of the nanostructures formed in the bulk solution of the mixed aqueous solution of 1.0×10^{-3} mol/L $C_{16}mimBr$ and 1.0×10^{-5} mol/L CdTe QDs aqueous solution.

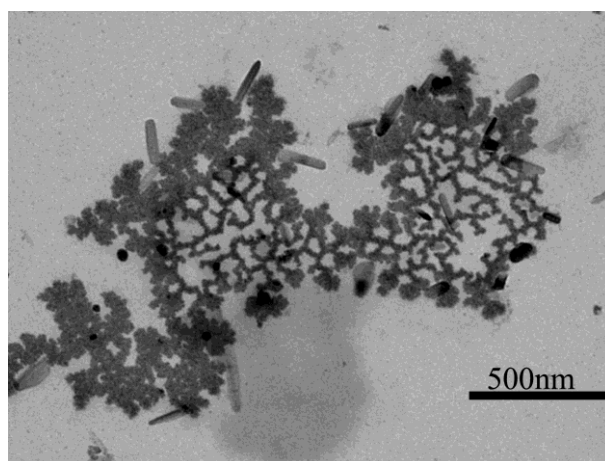


Figure S2. TEM image of the nanostructures formed at the air/water interface of the mixed aqueous solution of 1.0×10^{-3} mol/L $C_{16}mimBr$ and 1.0×10^{-5} mol/L CdTe QDs aqueous solution.

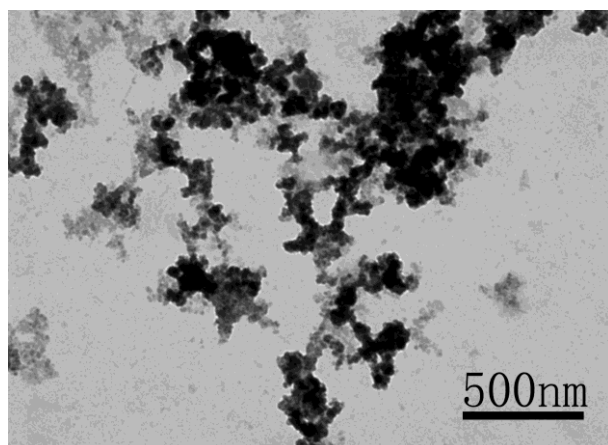


Figure S3. TEM image of nanostructures formed at the air/water interface when using CTAB instead of C₁₆mimBr.