

Electronic Supplementary Information

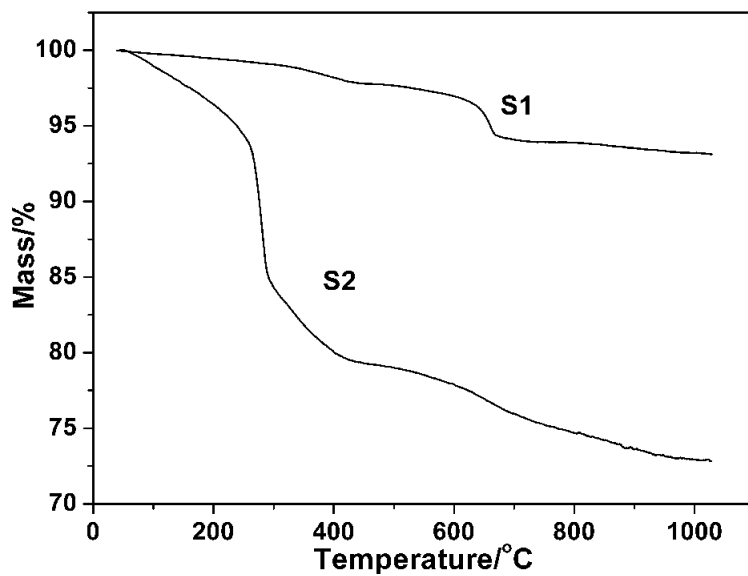


Fig. S1. TGA curves of the as-synthesized precursors (a) S1 and (b) S2.

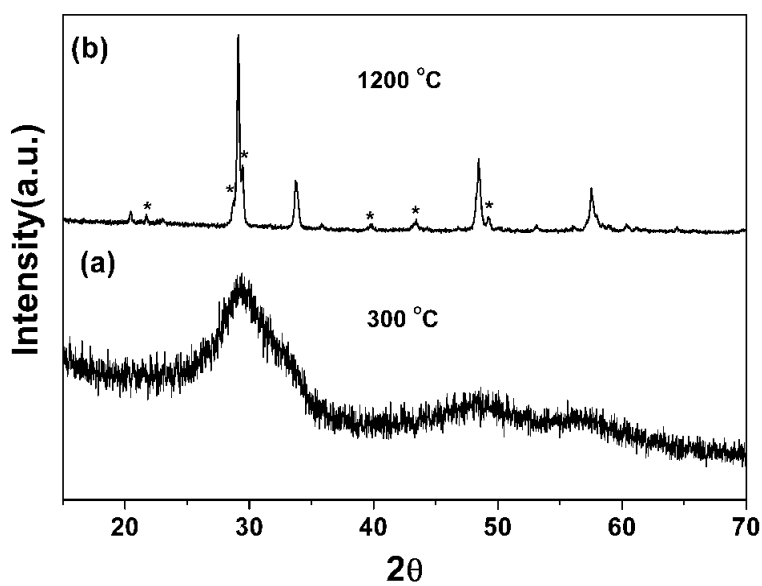


Fig. S2. XRD patterns of the as-calcined S2 at (a) 300 °C and (b) 1200 °C, respectively.

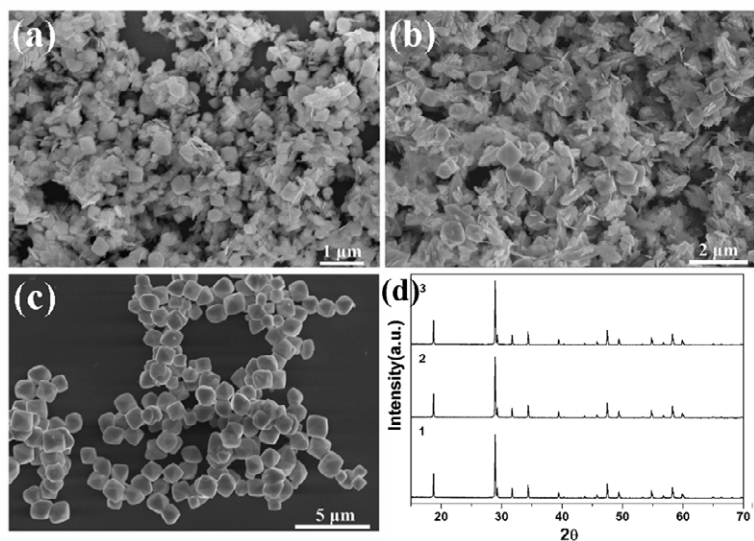


Fig. S3. Effects of the agents on the products' morphologies. (a, b) SEM images of the products obtained without $\text{Na}_2\text{H}_2\text{L}$ in the processes as those of **S1** and **S2**, respectively; (c) SEM image and (d) XRD pattern of the product obtained without adding NaOH (1) or $\text{Na}_2\text{H}_2\text{L}$ as the process of **S1** (2) and **S2** (3).

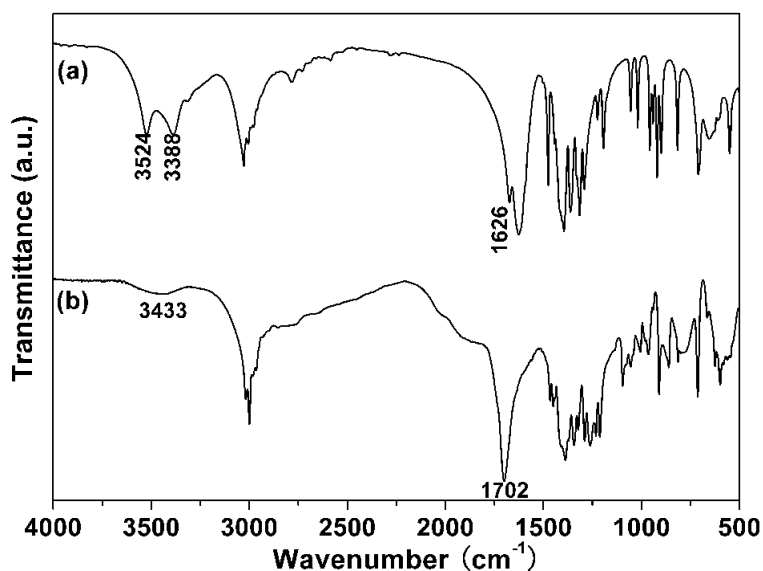


Fig. S4. FT-IR spectra of (a) the pure $\text{Na}_2\text{H}_2\text{L}$ and (b) the intermediate complex.

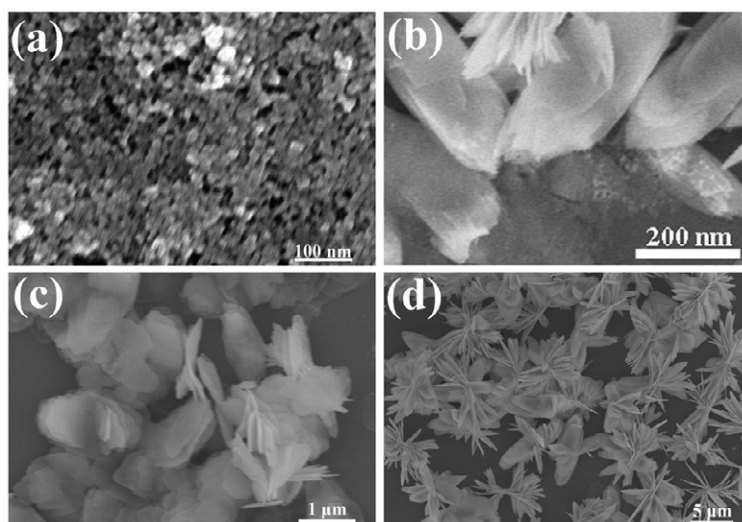


Fig. S5. SEM images of the as-synthesized precursor **S1** obtained after the reaction proceeded for (a) 0 h, (b) 2 h, (c) 6 h, (d) 12 h, respectively.