

Isostructural coordination polymers: epitaxis vs. solid solution

Matteo Lusi, Jerry L. Atwood, Leonard R. MacGillivray and Leonard J. Barbour

Supplementary Information

X-ray powder diffractograms were recorded using a PANalytical X'Pert Pro MPD equipped with an X'Celerator detector and a Cu sealed tube. Imaging of the samples and analysis of the chemical compositions was accomplished using a Zeiss EVO® MA15 Scanning Electron Microscope. The samples were coated with a 15 µm gold layer. Samples were characterised with secondary electron (SE) images, and compositions were quantified by EDX analysis using an Oxford Instruments® X-Max 20 mm² detector and Oxford INCA software. Beam conditions during the quantitative analyses were 20 kV, with a working distance of 8.5 mm and an approximate beam current of 20 nA. The counting time was 10 s (live-time). Pure Co were used periodically to correct for detector drift.

Solution Synthesis:

All reagents were provided by Sigma-Aldrich and used without further purification.

$\{\text{Cd}(\mu\text{-pyz})\mu\text{-Cl}_2\}_n$ (**1**): 0.1 mmol of $\text{CdCl}_2 \cdot 2.5\text{H}_2\text{O}$ (0.023 mg) and 0.1 mmol of pyrazine (0.008 mg) were dissolved in 5 ml of concentrated HCl (35 %). The solution was heated to the boiling point of the solvent to evaporate part thereof. Colourless crystals deposited within a few minutes on cooling to room temperature. A single crystal was selected and analysed by single crystal X-ray diffraction.

$\{\text{Cu}(\mu\text{-pyz})\mu\text{-Cl}_2\}_n$ (**2**): 0.1 mmol of $\text{CuCl}_2 \cdot 2\text{H}_2\text{O}$ (0.017 mg) and 0.1 mmol of pyrazine (0.008 mg) were added to 10 ml of concentrated HCl (35 %). The solution was heated to the boiling point of the solvent to dissolve the green precipitate. Green crystals deposited on cooling. A single crystal was selected and analysed by single crystal X-ray diffraction.

Epitaxial growth of **1** + **2**: 0.1 mmol of $\text{CuCl}_2 \cdot 2\text{H}_2\text{O}$ (0.017 mg), 0.1 mmol of $\text{CdCl}_2 \cdot 2.5\text{H}_2\text{O}$ (0.023 mg) and 0.2 mmol of pyrazine (0.016 mg) were mixed in 20 ml of concentrated HCl (35 %). The solution was heated to the boiling point of the solvent to dissolve the green precipitate. Green crystals deposited on cooling. On further cooling colourless crystals grew onto the green crystals. A single heterocrystal was selected and analysed by single crystal X-ray diffraction.

Mechanochemical Synthesis:

$\{\text{Cd}(\mu\text{-pyz})\mu\text{-Cl}_2\}_n$ (**1**): 1 mmol of $\text{CdCl}_2 \cdot 2.5\text{H}_2\text{O}$ (0.228 mg) and 1 mmol of pyrazine (0.080 mg) were manually ground with an agate mortar and pestle for five minutes. The white product was analysed by X-ray powder diffraction.

$\{\text{Cu}(\mu\text{-pyz})\mu\text{-Cl}_2\}_n$ (**2**): 1 mmol of $\text{CuCl}_2 \cdot 2\text{H}_2\text{O}$ (0.170 mg) and 1 mmol of pyrazine (0.080 mg) were manually ground with an agate mortar and pestle for five minutes until the light blue mixture turned green. The green product was analysed by X-ray powder diffraction.

$\{\text{Cd}_x\text{Cu}_{1-x}(\mu\text{-pyz})\mu\text{-Cl}_2\}_n$ (**3**): 1 mmol of $\text{CdCl}_2 \cdot 2.5\text{H}_2\text{O}$ (0.228 mg), 1 mmol of $\text{CuCl}_2 \cdot 2\text{H}_2\text{O}$ (0.170 mg) and 2 mmol of pyrazine (0.160 mg) were manually ground with an agate mortar and pestle for five

minutes. The light green product was analysed by X-ray powder diffraction, electron microscopy and energy dispersive X ray spectroscopy.

1 + 2 mixture: 1 mmol of $\{\text{Cd}(\mu\text{-pyz})\mu\text{-Cl}_2\}_n$ (**1**) and 1 mmol of $\{\text{Cu}(\mu\text{-pyz})\mu\text{-Cl}_2\}_n$ (**2**) were mixed together and analyzed by X-ray powder diffraction, electron microscopy and energy dispersive X ray spectroscopy. Later the same powder was manually ground, together with a drop of water, in an agate mortar for five minutes. The light green mixture was analysed again by means of X-ray powder diffraction, electron microscopy and energy dispersive X-ray spectroscopy.

Optical Microscopy:

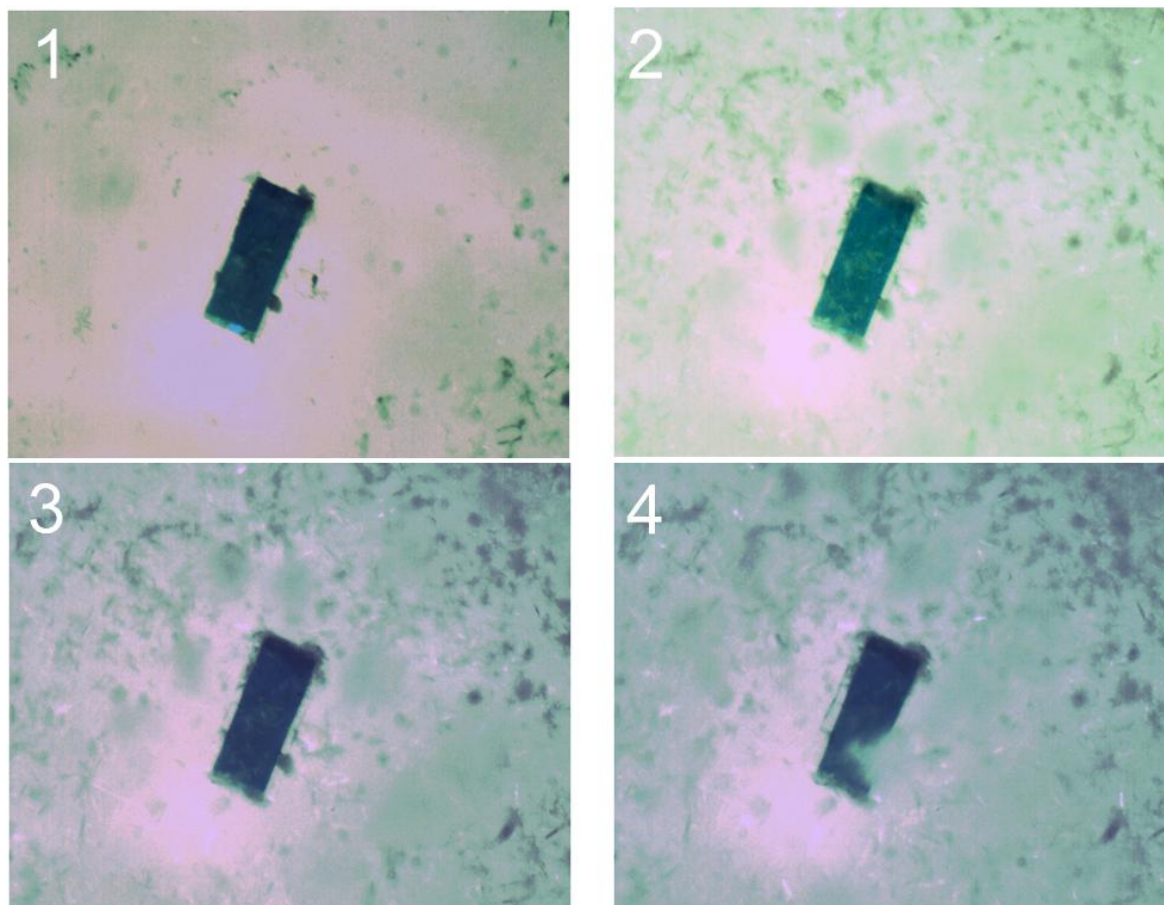


Figure S1 Time-lapse photographs showing the epitaxial growth of phase **1** onto phase **2**. Photographs were recorded at 60 s intervals in the sequence 1 to 4.

Single-Crystal X-ray Diffraction:

Single crystal X-ray data were collected at room temperature on a Bruker Apex diffractometer employing $\text{Mo } K_{\alpha}$ radiation. Structures were solved using SHELXS-97 and refined with SHELXL-97 via the X-Seed interface.

Table 1. Crystal data and structure refinement for **1**.

Empirical formula	C ₄ H ₄ CdCl ₂ N ₂	
Formula weight	263.39	
Temperature (K)	295(2)	
Wavelength (Å)	0.71073	
Crystal system	monoclinic	
Space group	C2/m	
Unit cell dimensions (Å, °)	<i>a</i> = 11.807(8)	α = 90.00
	<i>b</i> = 7.545(5)	β = 93.532(8)
	<i>c</i> = 3.737(3)	γ = 90.00
Volume (Å ³)	332.2(4)	
<i>Z</i>	2	
Calculated density (g cm ⁻³)	2.633	
Absorption coefficient (mm ⁻¹)	3.987	
<i>F</i> ₀₀₀	248	
Crystal size (mm ³)	0.15 × 0.07 × 0.03	
θ range for data collection (°)	3.21 to 28.00	
Miller index ranges	-14 ≤ <i>h</i> ≤ 13, -9 ≤ <i>k</i> ≤ 9, -4 ≤ <i>l</i> ≤ 3	
Reflections collected	941	
Independent reflections	395 [<i>R</i> _{int} = 0.0511]	
Completeness to θ_{\max} (%)	92.7	
Max. and min. transmission	0.8897 and 0.5861	
Refinement method	Full-matrix least-squares on <i>F</i> ²	
Data / restraints / parameters	395 / 0 / 25	
Goodness-of-fit on <i>F</i> ²	1.159	
Final <i>R</i> indices [<i>I</i> > 2σ(<i>I</i>)]	<i>R</i> 1 = 0.0445, <i>wR</i> 2 = 0.1197	
<i>R</i> indices (all data)	<i>R</i> 1 = 0.0445, <i>wR</i> 2 = 0.1197	
Largest diff. peak and hole (e Å ⁻³)	2.269 and -1.093	

Table 1. Crystal data and structure refinement for **2**.

Empirical formula	C ₄ H ₄ Cl ₂ CuN ₂	
Formula weight	214.53	
Temperature (K)	295(2)	
Wavelength (Å)	0.71073	
Crystal system	monoclinic	
Space group	<i>C2/m</i>	
Unit cell dimensions (Å, °)	<i>a</i> = 12.02(3)	α = 90.00
	<i>b</i> = 6.883(14)	β = 95.82(2)
	<i>c</i> = 3.712(8)	γ = 90.00
Volume (Å ³)	305.4(11)	
<i>Z</i>	2	
Calculated density (g cm ⁻³)	2.333	
Absorption coefficient (mm ⁻¹)	4.338	
<i>F</i> ₀₀₀	210	
Crystal size (mm ³)	0.10 × 0.05 × 0.05	
θ range for data collection (°)	3.41 to 27.47	
Miller index ranges	-15 ≤ <i>h</i> ≤ 15, -4 ≤ <i>k</i> ≤ 8, -4 ≤ <i>l</i> ≤ 4	
Reflections collected	861	
Independent reflections	353 [<i>R</i> _{int} = 0.0309]	
Completeness to θ_{\max} (%)	94.1	
Max. and min. transmission	0.8123 and 0.6709	
Refinement method	Full-matrix least-squares on <i>F</i> ²	
Data / restraints / parameters	353 / 0 / 25	
Goodness-of-fit on <i>F</i> ²	1.131	
Final <i>R</i> indices [<i>I</i> > 2σ(<i>I</i>)]	<i>R</i> 1 = 0.0345, <i>wR</i> 2 = 0.0926	
<i>R</i> indices (all data)	<i>R</i> 1 = 0.0385, <i>wR</i> 2 = 0.0977	
Largest diff. peak and hole (e Å ⁻³)	0.710 and -1.201	

Characterisation of the $1/2$ heterocrystal: the heterocrystal was mounted in the manner of a single crystal and a hemisphere of reflections was recorded. The program RLATT (part of the Bruker Apex II program suite) was used to visualize the contributions of the two crystalline components, as shown in Fig. S2.

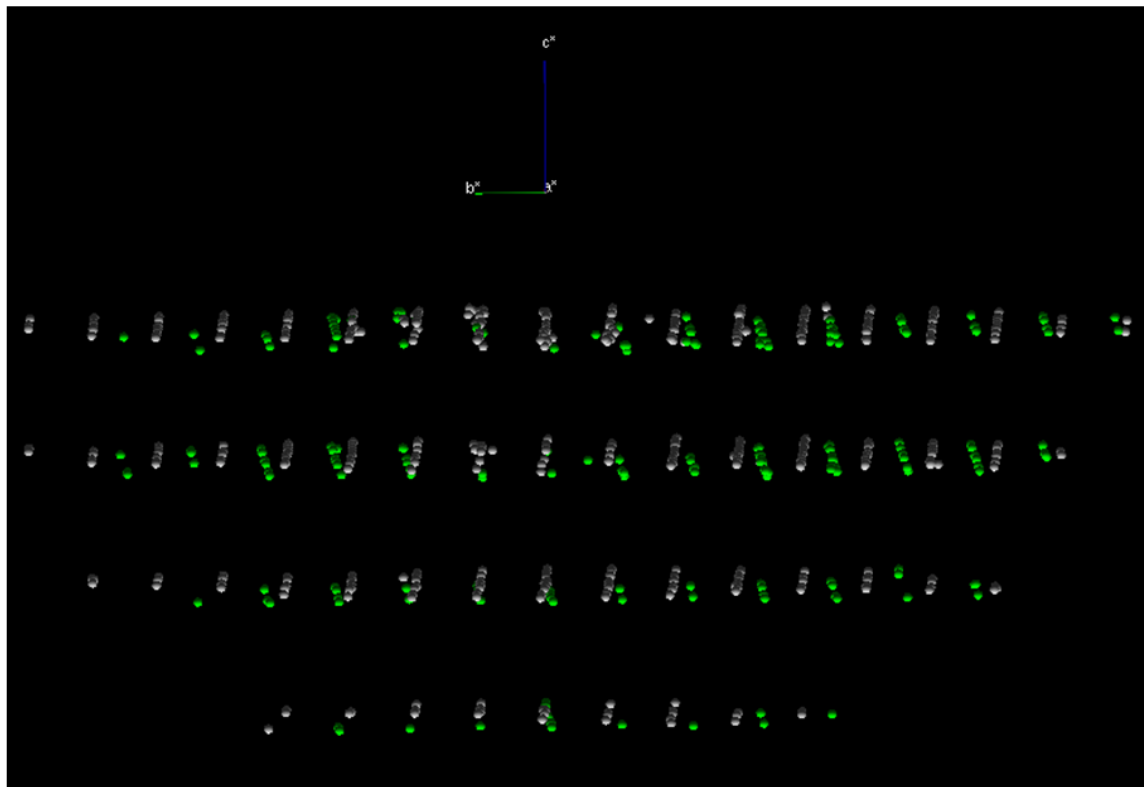


Figure S2. Diffraction pattern of the “single” $1/2$ heterocrystal. The white spots can be indexed with the unit cell dimensions of **1** and the green spots with the unit cell dimensions of **2**.

Rietveld Refinement:

Rietveld refinement of powder diffraction data was carried out using the PANalytical X’pert HighScore Plus suite to determine the individual phase contributions and the unit cell dimensions. Refinement was limited to background, scale factors and cell parameters (a , b , c and β).

```
data_1P

_audit_creation_date          '2011/02/22 05:48:55 PM'
_audit_creation_method        'Generated by X_Pert HighScore Plus
2.2.5'

_chemical_name_systematic
;
?
;

_chemical_formula_sum
;
C4 H4 Cd Cl2 N2
;

loop_
_symmetry_equiv_pos_as_xyz
'X, Y, Z'
'-X, Y, -Z'
'-X, -Y, -Z'
'X, -Y, Z'
'X+1/2, Y+1/2, Z'
'-X+1/2, Y+1/2, -Z'
'-X+1/2, -Y+1/2, -Z'
'X+1/2, -Y+1/2, Z'

_xact_pref_orient_vector_h    0.00000000
_xact_pref_orient_vector_k    0.00000000
_xact_pref_orient_vector_l    1.00000000
_xact_pref_orient_param      1.000000
_xact_scale_factor            0.000397
_xact_cagliotti_U             10.000000
_xact_cagliotti_V             0.000000
_xact_cagliotti_W             0.010000
_xact_shape_param_1           0.600000
_xact_shape_param_2           0.000000
_xact_shape_param_3           0.000000
_xact_asym_param_1            0.000000
_xact_asym_param_2            0.000000
_cell_length_a                 11.951(9)
_cell_length_b                 7.552(5)
_cell_length_c                 3.746(5)
_cell_angle_alpha              90
_cell_angle_beta               92.8(1)
_cell_angle_gamma              90

_symmetry_space_group_name_H-M 'C 1 2/m 1'
_symmetry_Int_Tables_number    12

loop_
_atom_site_label
_atom_site_type_symbol
_atom_site_fract_x
_atom_site_fract_y
_atom_site_fract_z
_atom_site_U_iso_or_equiv
```

```
_atom_site_thermal_displace_type
_atom_site_occupancy
_atom_site_symmetry_multiplicity
_atom_site_Wyckoff_symbol
_atom_site_calc_flag
Cd1 CD 0.000000 0.000000 0.000000 0.014900 Uiso 1.000000 2 a d
Cl1 Cl 0.154350 0.000000 0.528200 0.015800 Uiso 1.000000 4 i d
N1 N 0.000000 0.316600 0.000000 0.016200 Uiso 1.000000 4 g d
C1 C 0.409700 0.092200 0.087800 0.018400 Uiso 1.000000 8 j d
H1 H 0.345200 0.152600 0.150500 0.022000 Uiso 1.000000 8 j c
```

```
loop_
_atom_site_aniso_label
_atom_site_aniso_U_11
_atom_site_aniso_U_22
_atom_site_aniso_U_33
_atom_site_aniso_U_23
_atom_site_aniso_U_13
_atom_site_aniso_U_12
Cd1 0.018469 0.012725 0.014488 0.000000 0.004877 0.000000
Cl1 0.015800 0.020340 0.012174 0.000000 0.003338 0.000000
N1 0.016416 0.016031 0.016098 0.000000 -0.001016 0.000000
C1 0.018469 0.018035 0.019116 -0.001001 0.003048 0.001014
H1 0.000000 0.000000 0.000000 0.000000 0.000000 0.000000
```

```
_refine_ls_R_factor_all 0.29408651
```

```
data_ml141ref_p_01
```

```
_diffrn_source_target Cu
_diffrn_radiation_probe x-ray
_diffrn_radiation_wavelength 1.540598
_diffrn_radiation_type 'Cu K\alpha-1~'
```

```
loop_
_pd_peak_id
_pd_peak_2theta_centroid
_pd_peak_d_spacing
_pd_peak_pk_height
_pd_peak_width_2theta
PK1 13.864 6.382 48326.1 0.3973
PK2 14.830 5.969 38062.5 0.4235
PK3 23.540 3.776 32027.9 0.6665
PK4 23.763 3.741 11005.1 0.6728
PK5 25.279 3.520 4730.3 0.7161
PK6 27.295 3.265 1673.9 0.7743
PK7 27.495 3.241 12908.0 0.7801
PK8 27.931 3.192 954.5 0.7928
PK9 27.937 3.191 6189.2 0.7929
PK10 28.746 3.103 24965.7 0.8165
PK11 29.917 2.984 3249.9 0.8508
PK12 33.696 2.658 647.5 0.9628
PK13 33.696 2.658 647.5 0.9628
PK14 34.190 2.620 26521.5 0.9777
PK15 35.734 2.511 11490.8 1.0243
PK16 36.445 2.463 14329.2 1.0459
PK17 36.502 2.460 4941.6 1.0476
PK18 37.483 2.397 8189.1 1.0776
PK19 37.602 2.390 5426.6 1.0812
PK20 38.415 2.341 602.5 1.1062
PK21 39.496 2.280 6347.0 1.1396
```

PK22 39.557 2.276 9096.4 1.1415

```

loop_
  _refln_index_h
  _refln_index_k
  _refln_index_l
  _pd_refln_phase_id
  _refln_observed_status
  _refln_F_squared_calc
  _refln_F_squared_meas
  _refln_phase_calc
  _pd_refln_i100_meas
  _pd_refln_peak_id
    1 1 0 PH00 o 7089.080 7704.540 0.00 100.00
PK1
    2 0 0 PH00 o 11549.438 13920.538 0.00 78.76
PK2
    0 2 0 PH00 o 18426.707 30364.947 0.00 66.27
PK3
    0 0 1 PH00 o 6791.187 10641.518 0.00 22.77
PK4
    3 1 0 PH00 o 726.327 2603.984 0.00 9.79
PK5
    1 1 -1 PH00 o 601.608 1083.677 0.00 3.46
PK6
    2 0 -1 PH00 o 10147.460 16973.918 0.00 26.71
PK7
    1 1 1 PH00 o 432.174 648.974 0.00 1.98
PK8
    2 2 0 PH00 o 2808.191 4209.641 0.00 12.81
PK9
    2 0 1 PH00 o 22988.803 36091.832 0.00 51.66
PK10
    4 0 0 PH00 o 1273.797 5116.538 0.00 6.72
PK11
    0 2 -1 PH00 o 607.832 1317.794 0.00 1.34
PK12
    0 2 1 PH00 o 607.832 1317.791 0.00 1.34
PK13
    3 1 -1 PH00 o 15687.005 27854.641 0.00 54.88
PK14
    3 1 1 PH00 o 10108.922 13291.178 0.00 23.78
PK15
    1 3 0 PH00 o 13708.612 17306.709 0.00 29.65
PK16
    2 2 -1 PH00 o 4762.417 5988.884 0.00 10.23
PK17
    2 2 1 PH00 o 7821.735 10520.930 0.00 16.95
PK18
    4 0 -1 PH00 o 10085.319 14041.678 0.00 11.23
PK19
    4 2 0 PH00 o 482.951 817.268 0.00 1.25
PK20
    4 0 1 PH00 o 9985.430 18309.793 0.00 13.13
PK21
    5 1 0 PH00 o 7153.421 13165.637 0.00 18.82
PK22

_reflns_number_observed 22
_reflns_limit_h_min 0
_reflns_limit_h_max 5
    
```



```
_reflns_limit_k_min      0
_reflns_limit_k_max      3
_reflns_limit_l_min     -1
_reflns_limit_l_max      1
_reflns_d_resolution_high 2.276
_reflns_d_resolution_low 6.382

_pd_meas_datetime_initiated '2011/01/16 04:33:33 PM'
_pd_instr_cons_illum_flag   no
_pd_meas_2theta_range_min  3.99535563
_pd_meas_2theta_range_max 39.98435563
_pd_meas_2theta_range_inc  0.01700000
_pd_proc_2theta_range_min  3.99535563
_pd_proc_2theta_range_max 39.98435563
_pd_proc_2theta_range_inc  0.01700000

loop_
_pd_meas_intensity_total
_pd_proc_intensity_bkg_calc
_pd_calc_intensity_total
257.3338      0.0000      0.0000
250.4546      0.0000      0.0000
276.2570      0.0000      0.0000
309.6971      0.0000      0.0000
276.6805      0.0000      0.0000
298.8412      0.0000      0.0000
285.1418      0.0000      0.0000
250.1721      0.0000      0.0000
264.6871      0.0000      0.0000
273.4156      0.0000      0.0000
234.9720      0.0000      0.0000
275.6317      0.0000      0.0000
256.9826      0.0000      0.0000
273.0972      0.0000      0.0000
276.8848      0.0000      0.0000
263.5154      0.0000      0.0000
263.2357      0.0000      0.0000
276.0763      0.0000      0.0000
267.5161      0.0000      0.0000
269.4968      0.0000      0.0000
287.7110      0.0000      0.0000
272.7728      0.0000      0.0000
272.6503      0.0000      0.0000
264.0184      0.0000      0.0000
259.0674      0.0000      0.0000
262.1865      0.0000      0.0000
281.2326      0.0000      0.0000
274.7621      0.0000      0.0000
271.0064      0.0000      0.0000
288.9626      0.0000      0.0000
261.3560      0.0000      0.0000
258.3336      0.0000      0.0000
268.5554      0.0000      0.0000
252.3308      0.0000      0.0000
257.3379      0.0000      0.0000
261.9544      0.0000      0.0000
254.2146      0.0000      0.0000
253.4133      0.0000      0.0000
257.7723      0.0000      0.0000
259.0593      0.0000      0.0000
256.4497      0.0000      0.0000
```

253.0612	0.0000	0.0000
252.2597	0.0000	0.0000
257.6200	0.0000	0.0000
264.4508	0.0000	0.0000
250.2519	0.0000	0.0000
236.1531	0.0000	0.0000
220.3528	0.0000	0.0000
231.0039	0.0000	0.0000
280.4316	0.0000	0.0000
241.5741	0.0000	0.0000
249.8980	0.0000	0.0000
245.9693	0.0000	0.0000
208.1064	0.0000	0.0000
248.1055	0.0000	0.0000
245.9763	0.0000	0.0000
238.4563	0.0000	0.0000
234.6357	0.0000	0.0000
218.5575	0.0000	0.0000
239.5655	0.0000	0.0000
244.7884	0.0000	0.0000
209.2815	0.0000	0.0000
227.4372	0.0000	0.0000
225.4883	0.0000	0.0000
249.1347	0.0000	0.0000
218.8403	0.0000	0.0000
222.6411	0.0000	0.0000
194.3528	0.0000	0.0000
242.8233	0.0000	0.0000
205.1286	0.0000	0.0000
221.4283	0.0000	0.0000
238.0327	0.0000	0.0000
211.5170	0.0000	0.0000
212.1103	0.0000	0.0000
218.7693	0.0000	0.0000
192.4154	0.0000	0.0000
212.8877	0.0000	0.0000
205.0545	0.0000	0.0000
212.3931	0.0000	0.0000
214.0674	0.0000	0.0000
192.4238	0.0000	0.0000
200.7124	0.0000	0.0000
215.9529	0.0000	0.0000
202.8916	0.0000	0.0000
198.0356	0.0000	0.0000
196.7104	0.0000	0.0000
194.0518	0.0000	0.0000
197.6914	0.0000	0.0000
203.5866	0.0000	0.0000
204.3183	0.0000	0.0000
190.5650	0.0000	0.0000
193.6929	0.0000	0.0000
195.2842	0.0000	0.0000
203.2109	0.0000	0.0000
190.4897	0.0000	0.0000
188.4382	0.0000	0.0000
204.2771	0.0000	0.0000
180.3803	0.0000	0.0000
193.0881	0.0000	0.0000
182.3314	0.0000	0.0000
216.8883	0.0000	0.0000
170.3242	0.0000	0.0000

200.7084	0.0000	0.0000
183.8050	0.0000	0.0000
184.6565	0.0000	0.0000
200.8524	0.0000	0.0000
189.5042	0.0000	0.0000
185.1244	0.0000	0.0000
182.1737	0.0000	0.0000
174.9643	0.0000	0.0000
193.7281	0.0000	0.0000
172.3692	0.0000	0.0000
167.7894	0.0000	0.0000
199.5819	0.0000	0.0000
150.3019	0.0000	0.0000
208.3923	0.0000	0.0000
166.7924	0.0000	0.0000
186.1534	0.0000	0.0000
157.3963	0.0000	0.0000
207.4060	0.0000	0.0000
164.5851	0.0000	0.0000
152.7044	0.0000	0.0000
168.4326	0.0000	0.0000
161.9129	0.0000	0.0000
184.9077	0.0000	0.0000
159.7481	0.0000	0.0000
170.6042	0.0000	0.0000
173.2016	0.0000	0.0000
158.2459	0.0000	0.0000
164.9875	0.0000	0.0000
156.3746	0.0000	0.0000
180.0728	0.0000	0.0000
156.9285	0.0000	0.0000
165.1946	0.0000	0.0000
149.2831	0.0000	0.0000
181.0085	0.0000	0.0000
171.1514	0.0000	0.0000
167.1962	0.0000	0.0000
182.7828	0.0000	0.0000
177.1836	0.0000	0.0000
166.2200	0.0000	0.0000
161.9651	0.0000	0.0000
149.4958	0.0000	0.0000
162.6103	0.0000	0.0000
171.3204	0.0000	0.0000
166.8980	0.0000	0.0000
183.9570	0.0000	0.0000
170.5270	0.0000	0.0000
157.3808	0.0000	0.0000
164.2024	0.0000	0.0000
162.9411	0.0000	0.0000
140.8266	0.0000	0.0000
165.5137	0.0000	0.0000
167.9567	0.0000	0.0000
159.4146	0.0000	0.0000
159.6152	0.0000	0.0000
162.6695	0.0000	0.0000
153.4019	0.0000	0.0000
172.5392	0.0000	0.0000
143.5814	0.0000	0.0000
162.2047	0.0000	0.0000
132.6657	0.0000	0.0000
163.0387	0.0000	0.0000

150.2161	0.0000	0.0000
155.8924	0.0000	0.0000
174.3245	0.0000	0.0000
140.1914	0.0000	0.0000
173.2682	0.0000	0.0000
162.9851	0.0000	0.0000
130.9937	0.0000	0.0000
182.9882	0.0000	0.0000
156.0487	0.0000	0.0000
159.3443	0.0000	0.0000
134.7962	0.0000	0.0000
174.8241	0.0000	0.0000
187.8249	0.0000	0.0000
168.2515	0.0000	0.0000
149.4814	0.0000	0.0000
152.9888	0.0000	0.0000
158.9795	0.0000	0.0000
139.7812	0.0000	0.0000
156.4870	0.0000	0.0000
147.9699	0.0000	0.0000
168.3746	0.0000	0.0000
160.2267	0.0000	0.0000
156.8364	0.0000	0.0000
133.9134	0.0000	0.0000
150.7751	0.0000	0.0000
161.1940	0.0000	0.0000
150.1045	0.0000	0.0000
132.8237	0.0000	0.0000
151.9798	0.0000	0.0000
152.6255	0.0000	0.0000
155.9462	0.0000	0.0000
176.8070	0.0000	0.0000
154.5886	0.0000	0.0000
170.7660	0.0000	0.0000
169.0000	0.0000	0.0000
139.3312	0.0000	0.0000
160.2181	0.0000	0.0000
163.8147	0.0000	0.0000
158.9854	0.0000	0.0000
160.7986	0.0000	0.0000
158.1950	0.0000	0.0000
152.2329	0.0000	0.0000
167.9347	0.0000	0.0000
146.7188	0.0000	0.0000
166.4881	0.0000	0.0000
161.7080	0.0000	0.0000
140.1110	0.0000	0.0000
148.6691	0.0000	0.0000
145.4266	0.0000	0.0000
154.9004	0.0000	0.0000
160.3448	0.0000	0.0000
160.0246	0.0000	0.0000
150.8787	0.0000	0.0000
140.2334	0.0000	0.0000
148.9132	0.0000	0.0000
166.6570	0.0000	0.0000
134.9870	0.0000	0.0000
135.6538	0.0000	0.0000
139.6595	0.0000	0.0000
159.5009	0.0000	0.0000
134.3166	0.0000	0.0000

177.6991	0.0000	0.0000
139.7811	0.0000	0.0000
148.6817	0.0000	0.0000
129.0489	0.0000	0.0000
145.5175	0.0000	0.0000
140.6567	0.0000	0.0000
157.0590	0.0000	0.0000
137.0607	0.0000	0.0000
140.2114	0.0000	0.0000
157.3986	0.0000	0.0000
153.7945	0.0000	0.0000
171.6427	0.0000	0.0000
128.6611	0.0000	0.0000
156.8359	0.0000	0.0000
171.2917	0.0000	0.0000
136.0809	0.0000	0.0000
125.3287	0.0000	0.0000
145.2791	0.0000	0.0000
165.2591	0.0000	0.0000
162.0724	0.0000	0.0000
137.8099	0.0000	0.0000
151.2376	0.0000	0.0000
134.8600	0.0000	0.0000
139.2847	0.0000	0.0000
149.5260	0.0000	0.0000
157.0512	0.0000	0.0000
146.4466	0.0000	0.0000
139.2716	0.0000	0.0000
146.9459	0.0000	0.0000
141.5095	0.0000	0.0000
167.5653	0.0000	0.0000
158.1663	0.0000	0.0000
144.2092	0.0000	0.0000
149.1115	0.0000	0.0000
160.3450	0.0000	0.0000
137.1428	0.0000	0.0000
139.2696	0.0000	0.0000
158.3692	0.0000	0.0000
138.8899	0.0000	0.0000
126.1791	0.0000	0.0000
142.9089	0.0000	0.0000
153.5151	0.0000	0.0000
140.9942	0.0000	0.0000
146.3442	0.0000	0.0000
144.1078	0.0000	0.0000
133.3707	0.0000	0.0000
148.0917	0.0000	0.0000
159.2010	0.0000	0.0000
124.8502	0.0000	0.0000
170.2957	0.0000	0.0000
163.8098	0.0000	0.0000
135.1555	0.0000	0.0000
152.8302	0.0000	0.0000
156.5173	0.0000	0.0000
131.7532	0.0000	0.0000
143.0920	0.0000	0.0000
153.4199	0.0000	0.0000
136.2461	0.0000	0.0000
150.8368	0.0000	0.0000
140.9515	0.0000	0.0000
157.6049	0.0000	0.0000

164.9726	0.0000	0.0000
127.8469	0.0000	0.0000
134.8906	0.0000	0.0000
153.3860	0.0000	0.0000
158.1896	0.0000	0.0000
134.9864	0.0000	0.0000
157.0580	0.0000	0.0000
149.6073	0.0000	0.0000
139.3548	0.0000	0.0000
146.1358	0.0000	0.0000
148.8603	0.0000	0.0000
153.7593	0.0000	0.0000
151.1012	0.0000	0.0000
124.1594	0.0000	0.0000
171.8523	0.0000	0.0000
167.7116	0.0000	0.0000
109.6942	0.0000	0.0000
158.6047	0.0000	0.0000
136.6137	0.0000	0.0000
119.3901	0.0000	0.0000
130.8107	0.0000	0.0000
155.1648	0.0000	0.0000
153.0287	0.0000	0.0000
139.5218	0.0000	0.0000
152.4076	0.0000	0.0000
153.6124	0.0000	0.0000
144.8795	0.0000	0.0000
141.2605	0.0000	0.0000
135.9872	0.0000	0.0000
129.2534	0.0000	0.0000
142.4580	0.0000	0.0000
124.6958	0.0000	0.0000
138.3008	0.0000	0.0000
165.4171	0.0000	0.0000
150.2098	0.0000	0.0000
141.0900	0.0000	0.0000
151.2623	0.0000	0.0000
141.7419	0.0000	0.0000
156.0565	0.0000	0.0000
174.7119	0.0000	0.0000
149.3504	0.0000	0.0000
147.1286	0.0000	0.0000
141.5871	0.0000	0.0000
131.2811	0.0000	0.0000
151.2571	0.0000	0.0000
145.7558	0.0000	0.0000
145.6617	0.0000	0.0000
133.1368	0.0000	0.0000
152.1294	0.0000	0.0000
150.6456	0.0000	0.0000
132.9502	0.0000	0.0000
137.4160	0.0000	0.0000
138.7564	0.0000	0.0000
137.0788	0.0000	0.0000
119.2765	0.0000	0.0000
155.8105	0.0000	0.0000
145.2234	0.0000	0.0000
96.5607	0.0000	0.0000
124.0091	0.0000	0.0000
130.0390	0.0000	0.0000
143.5954	0.0000	0.0000

157.9628	0.0000	0.0000
152.4071	0.0000	0.0000
111.7452	0.0000	0.0000
124.6612	0.0000	0.0000
146.7564	0.0000	0.0000
120.4718	0.0000	0.0000
158.8629	0.0000	0.0000
131.4946	0.0000	0.0000
130.4870	0.0000	0.0000
146.7513	0.0000	0.0000
134.9495	0.0000	0.0000
129.1252	0.0000	0.0000
146.9939	0.0000	0.0000
114.5642	0.0000	0.0000
133.0813	0.0000	0.0000
144.3753	0.0000	0.0000
119.2262	0.0000	0.0000
131.2349	0.0000	0.0000
150.7390	0.0000	0.0000
135.5331	0.0000	0.0000
135.1038	0.0000	0.0000
147.0116	0.0000	0.0000
130.3562	0.0000	0.0000
127.5664	0.0000	0.0000
135.8513	0.0000	0.0000
164.4070	0.0000	0.0000
153.7158	0.0000	0.0000
122.4978	0.0000	0.0000
110.8968	0.0000	0.0000
113.1605	0.0000	0.0000
130.6366	0.0000	0.0000
143.8252	0.0000	0.0000
147.9964	0.0000	0.0000
140.8306	0.0000	0.0000
126.6038	0.0000	0.0000
113.0944	0.0000	0.0000
130.5997	0.0000	0.0000
152.2753	0.0000	0.0000
141.6283	0.0000	0.0000
108.7178	0.0000	0.0000
140.6482	0.0000	0.0000
160.2392	0.0000	0.0000
119.2953	0.0000	0.0000
150.1777	0.0000	0.0000
148.2203	0.0000	0.0000
143.1107	0.0000	0.0000
129.6520	0.0000	0.0000
139.6303	0.0000	0.0000
133.6704	0.0000	0.0000
141.1946	0.0000	0.0000
133.6116	0.0000	0.0000
152.6819	0.0000	0.0000
156.0629	0.0000	0.0000
163.5437	0.0000	0.0000
141.6265	0.0000	0.0000
140.1518	0.0000	0.0000
149.5074	0.0000	0.0000
140.4680	0.0000	0.0000
136.3465	0.0000	0.0000
130.8053	0.0000	0.0000
154.6937	0.0000	0.0000

122.7313	0.0000	0.0000
116.8641	0.0000	0.0000
158.2891	0.0000	0.0000
143.6253	0.0000	0.0000
144.7181	0.0000	0.0000
139.6937	0.0000	0.0000
148.6759	0.0000	0.0000
126.7650	0.0000	0.0000
123.3145	0.0000	0.0000
150.4323	0.0000	0.0000
123.4531	0.0000	0.0000
132.4733	0.0000	0.0000
141.4675	0.0000	0.0000
137.9837	0.0000	0.0000
131.2622	0.0000	0.0000
129.6605	0.0000	0.0000
133.0678	0.0000	0.0000
136.9022	0.0000	0.0000
136.4422	0.0000	0.0000
172.4056	0.0000	0.0000
155.2366	0.0000	0.0000
120.3850	0.0000	0.0000
131.0949	0.0000	0.0000
134.9716	0.0000	0.0000
133.7406	0.0000	0.0000
143.7074	0.0000	0.0000
155.5047	0.0000	0.0000
136.4047	0.0000	0.0000
127.3833	0.0000	0.0000
132.7956	0.0000	0.0000
136.0392	0.0000	0.0000
142.2427	0.0000	0.0000
135.4733	0.0000	0.0000
159.4406	0.0000	0.0000
143.8037	0.0000	0.0000
141.4983	0.0000	0.0000
153.4449	0.0000	0.0000
151.2647	0.0000	0.0000
146.7397	0.0000	0.0000
132.4246	0.0000	0.0000
148.0545	0.0000	0.0000
152.4306	0.0000	0.0000
151.3281	0.0000	0.0000
131.2152	0.0000	0.0000
119.7485	0.0000	0.0000
120.5508	0.0000	0.0000
149.6185	0.0000	0.0000
170.9993	0.0000	0.0000
153.6125	0.0000	0.0000
153.2819	0.0000	0.0000
130.8698	0.0000	0.0000
137.9324	0.0000	0.0000
151.3520	0.0000	0.0000
166.3534	0.0000	0.0000
150.8628	0.0000	0.0000
155.9207	0.0000	0.0000
135.1085	0.0000	0.0000
129.9181	0.0000	0.0000
137.4529	0.0000	0.0000
143.2463	0.0000	0.0000
138.8933	0.0000	0.0000

127.8184	0.0000	0.0000
149.4046	0.0000	0.0000
154.3379	0.0000	0.0000
149.6495	0.0000	0.0000
137.9505	0.0000	0.0000
127.7826	0.0000	0.0000
142.1815	0.0000	0.0000
154.6016	0.0000	0.0000
129.5964	0.0000	0.0000
139.6581	0.0000	0.0000
138.4465	0.0000	0.0000
157.1732	0.0000	0.0000
156.4609	0.0000	0.0000
121.9990	0.0000	0.0000
135.1805	0.0000	0.0000
154.3945	0.0000	0.0000
125.0345	0.0000	0.0000
123.6228	0.0000	0.0000
147.3875	0.0000	0.0000
150.7477	0.0000	11.1715
145.2743	0.0000	11.4105
146.5339	0.0000	11.6572
155.0936	0.0000	11.9119
133.6991	0.0000	12.1750
128.1874	0.0000	12.4469
148.2079	0.0000	12.7280
148.4369	0.0000	13.0186
140.8523	0.0000	13.3193
151.0413	0.0000	13.6304
157.1566	0.0000	13.9524
166.0571	0.0000	14.2860
169.5061	0.0000	14.6315
144.3636	0.0000	14.9897
132.5839	0.0000	15.3610
159.1264	0.0000	15.7463
133.8195	0.0000	16.1461
142.6282	0.0000	16.5612
158.5930	0.0000	16.9923
150.6378	0.0000	17.4404
138.4270	0.0000	17.9063
148.5499	0.0000	18.3910
136.1566	0.0000	18.8955
151.3400	0.0000	19.4207
132.8275	0.0000	19.9680
125.1893	0.0000	20.5385
135.1373	0.0000	21.1336
161.6765	0.0000	21.7547
150.7795	0.0000	22.4031
150.0494	0.0000	23.0808
167.0366	0.0000	23.7893
120.5744	0.0000	24.5305
137.6827	0.0000	25.3065
148.0068	0.0000	26.1194
172.6676	0.0000	26.9717
127.1612	0.0000	27.8657
138.7726	0.0000	28.8044
167.3080	0.0000	29.7906
149.3469	0.0000	30.8275
137.4300	0.0000	31.9188
138.5920	0.0000	33.0681
173.6464	0.0000	34.2797

171.9383	0.0000	35.5581
150.5186	0.0000	36.9082
161.6515	0.0000	38.3356
163.2468	0.0000	39.8463
147.9050	0.0000	41.4472
118.5576	0.0000	43.1456
145.7413	0.0000	44.9504
161.0220	0.0000	46.8713
185.8525	0.0000	48.9196
181.3625	0.0000	58.6017
133.2769	0.0000	61.0970
120.8587	0.0000	63.7715
146.4097	0.0000	66.6475
170.3070	0.0000	69.7521
181.5451	0.0000	73.1184
162.5622	0.0000	76.7870
151.8085	0.0000	80.8081
184.8813	0.0000	85.2429
194.1383	0.0000	90.1666
173.8469	0.0000	95.6710
177.5217	0.0000	101.8670
204.2868	0.0000	108.8892
215.9605	0.0000	116.8969
195.2965	0.0000	126.0781
202.0678	0.0000	136.6516
226.3430	0.0000	148.8681
224.7968	0.0000	163.0129
227.8696	0.0000	179.4007
238.7173	0.0000	198.3757
256.1746	0.0000	220.3037
256.1573	0.0000	245.5700
274.2823	0.0000	274.5611
291.5695	0.0000	307.6567
297.5852	0.0000	345.2125
310.5536	0.0000	387.5401
355.9752	0.0000	434.8963
399.0422	0.0000	487.4481
411.5227	0.0000	545.2582
441.5791	0.0000	608.2594
513.0107	0.0000	676.2252
536.9813	0.0000	748.7576
562.2070	0.0000	825.2332
660.6439	0.0000	904.7834
770.5163	0.0000	986.2510
817.9031	0.0000	1068.1451
858.6248	0.0000	1148.6250
984.4974	0.0000	1225.4590
1151.1812	0.0000	1296.0745
1159.3079	0.0000	1357.6587
1200.0693	0.0000	1407.3534
1633.2692	0.0000	1442.5569
1711.7854	0.0000	1461.2487
1681.1383	0.0000	1462.3162
1768.4926	0.0000	1445.7407
1791.9708	0.0000	1412.6060
1658.2150	0.0000	1364.9022
1459.0265	0.0000	1305.2280
1245.4393	0.0000	1236.4412
1132.7643	0.0000	1161.3701
862.6009	0.0000	1082.5955
737.9077	0.0000	1002.3680

600.3332	0.0000	922.5584
505.7921	0.0000	844.6731
477.7751	0.0000	769.8929
445.8891	0.0000	699.0976
346.1772	0.0000	632.9302
286.6124	0.0000	571.8166
305.0181	0.0000	516.0008
311.2602	0.0000	465.5758
288.8513	0.0000	420.4989
271.7070	0.0000	380.6337
218.8026	0.0000	345.7619
226.3055	0.0000	315.6094
260.8336	0.0000	289.8686
221.4839	0.0000	268.2122
184.8185	0.0000	250.3197
208.1747	0.0000	235.8853
235.8268	0.0000	224.6322
223.2923	0.0000	216.3218
213.2750	0.0000	210.7583
214.2186	0.0000	207.7958
230.3750	0.0000	207.3373
231.8524	0.0000	209.3345
230.6217	0.0000	213.7849
229.6250	0.0000	220.7276
240.1655	0.0000	230.2363
256.1749	0.0000	242.4118
265.4193	0.0000	257.3726
256.9405	0.0000	275.2475
261.7483	0.0000	296.1605
294.2521	0.0000	320.2218
341.9344	0.0000	347.5153
347.7228	0.0000	378.0840
306.4876	0.0000	411.9246
367.3100	0.0000	448.9642
408.0698	0.0000	489.0536
457.7620	0.0000	531.9514
456.0391	0.0000	577.3055
483.1444	0.0000	624.6466
549.9532	0.0000	673.3533
588.9981	0.0000	722.6419
675.4644	0.0000	771.5460
658.3721	0.0000	818.9028
744.8691	0.0000	863.3696
799.3595	0.0000	903.4420
903.0611	0.0000	937.5377
1104.2318	0.0000	964.1121
1067.3212	0.0000	981.8124
1064.2490	0.0000	989.6480
1186.0428	0.0000	987.1249
1170.6189	0.0000	974.3255
1085.7421	0.0000	951.8939
1016.6005	0.0000	920.9402
978.2718	0.0000	882.8798
895.4384	0.0000	839.2776
757.1870	0.0000	791.6953
584.5556	0.0000	741.5901
583.8435	0.0000	690.2434
551.2300	0.0000	638.7520
436.7357	0.0000	588.0178
380.2820	0.0000	538.7635
332.7346	0.0000	491.5546

328.6794	0.0000	446.8083
277.5301	0.0000	404.8283
241.3976	0.0000	365.8100
269.7272	0.0000	329.8575
245.8679	0.0000	296.9990
223.5994	0.0000	267.1912
222.7554	0.0000	240.3423
183.5007	0.0000	216.3155
167.1417	0.0000	194.9409
197.2039	0.0000	176.0269
184.5693	0.0000	159.3645
155.8738	0.0000	144.7418
171.0750	0.0000	131.9460
164.6272	0.0000	120.7708
163.8641	0.0000	111.0203
176.6685	0.0000	102.5108
170.6493	0.0000	95.0756
147.9079	0.0000	88.5640
157.2186	0.0000	82.8425
161.0559	0.0000	77.7941
166.1803	0.0000	73.3168
170.0690	0.0000	69.3243
146.2126	0.0000	65.7428
149.1796	0.0000	62.5105
134.7553	0.0000	48.6274
132.5427	0.0000	46.1715
160.9481	0.0000	43.9276
151.5949	0.0000	41.8668
145.3758	0.0000	39.9651
150.5825	0.0000	38.2027
130.8704	0.0000	36.5633
154.7583	0.0000	35.0334
145.8775	0.0000	33.6015
128.5582	0.0000	32.2583
131.1222	0.0000	30.9955
128.2453	0.0000	29.8060
141.9026	0.0000	28.6839
110.0150	0.0000	27.6238
116.6696	0.0000	26.6210
158.5960	0.0000	25.6713
161.0214	0.0000	24.7710
128.2014	0.0000	23.9167
158.0357	0.0000	23.1052
165.9216	0.0000	22.3338
112.9749	0.0000	21.5998
112.2205	0.0000	20.9009
154.4436	0.0000	20.2350
127.5838	0.0000	19.5999
138.5154	0.0000	18.9939
124.2116	0.0000	18.4153
130.4190	0.0000	17.8623
149.7515	0.0000	17.3336
121.8185	0.0000	16.8278
139.1773	0.0000	16.3435
128.3530	0.0000	15.8796
136.9488	0.0000	15.4349
156.9352	0.0000	15.0085
143.1032	0.0000	14.5993
117.5040	0.0000	14.2065
118.5828	0.0000	13.8292
132.6679	0.0000	13.4666

125.1425	0.0000	13.1179
114.5750	0.0000	12.7825
124.9194	0.0000	12.4596
138.3126	0.0000	12.1488
133.3265	0.0000	11.8493
115.7360	0.0000	11.5607
125.3106	0.0000	11.2824
134.5899	0.0000	11.0140
115.3197	0.0000	10.7549
113.4105	0.0000	10.5049
125.9710	0.0000	10.2634
141.4877	0.0000	10.0300
127.3354	0.0000	9.8045
113.9764	0.0000	9.5865
118.7851	0.0000	9.3756
130.4745	0.0000	9.1715
143.9157	0.0000	8.9740
143.3029	0.0000	8.7827
134.4965	0.0000	8.5975
133.5667	0.0000	8.4181
118.0345	0.0000	8.2441
118.5073	0.0000	8.0755
108.1134	0.0000	7.9120
105.5008	0.0000	7.7533
127.0698	0.0000	7.5994
139.0410	0.0000	7.4500
127.4634	0.0000	0.0000
124.9202	0.0000	0.0000
109.0675	0.0000	0.0000
121.6055	0.0000	0.0000
141.6087	0.0000	0.0000
128.2110	0.0000	0.0000
109.9523	0.0000	0.0000
144.7070	0.0000	0.0000
99.3861	0.0000	0.0000
92.0777	0.0000	0.0000
130.4421	0.0000	0.0000
140.7004	0.0000	0.0000
129.8151	0.0000	0.0000
104.5215	0.0000	0.0000
105.7425	0.0000	0.0000
121.9499	0.0000	0.0000
122.7572	0.0000	0.0000
125.8672	0.0000	0.0000
119.3911	0.0000	0.0000
125.6890	0.0000	0.0000
133.9339	0.0000	0.0000
126.8861	0.0000	0.0000
138.1348	0.0000	0.0000
127.9046	0.0000	0.0000
105.3668	0.0000	0.0000
90.2703	0.0000	0.0000
113.2865	0.0000	0.0000
135.8147	0.0000	0.0000
128.7034	0.0000	0.0000
108.6866	0.0000	0.0000
115.4355	0.0000	0.0000
130.4633	0.0000	0.0000
127.5016	0.0000	0.0000
108.6994	0.0000	0.0000
129.3170	0.0000	0.0000

123.1277	0.0000	0.0000
107.6905	0.0000	0.0000
116.5803	0.0000	0.0000
111.8899	0.0000	0.0000
102.3111	0.0000	0.0000
111.0391	0.0000	0.0000
129.3907	0.0000	0.0000
128.8604	0.0000	0.0000
113.8739	0.0000	0.0000
109.6010	0.0000	0.0000
107.3301	0.0000	0.0000
109.9149	0.0000	0.0000
100.8949	0.0000	0.0000
111.2087	0.0000	0.0000
105.6750	0.0000	0.0000
122.1427	0.0000	0.0000
125.2097	0.0000	0.0000
118.5940	0.0000	0.0000
104.0741	0.0000	0.0000
88.0542	0.0000	0.0000
94.9841	0.0000	0.0000
117.7480	0.0000	0.0000
130.0150	0.0000	0.0000
114.2814	0.0000	0.0000
114.0117	0.0000	0.0000
109.5806	0.0000	0.0000
108.0273	0.0000	0.0000
103.9529	0.0000	0.0000
116.4103	0.0000	0.0000
121.6582	0.0000	0.0000
119.7680	0.0000	0.0000
87.2507	0.0000	0.0000
120.8692	0.0000	0.0000
128.0201	0.0000	0.0000
120.4818	0.0000	0.0000
97.7433	0.0000	0.0000
99.5650	0.0000	0.0000
123.2206	0.0000	0.0000
119.1111	0.0000	0.0000
130.9786	0.0000	0.0000
97.1585	0.0000	0.0000
112.9838	0.0000	0.0000
110.0045	0.0000	0.0000
119.8768	0.0000	0.0000
136.4236	0.0000	0.0000
136.4054	0.0000	0.0000
125.6916	0.0000	0.0000
122.9399	0.0000	0.0000
98.4010	0.0000	0.0000
113.9731	0.0000	0.0000
99.6358	0.0000	0.0000
92.9831	0.0000	0.0000
100.8753	0.0000	0.0000
109.6123	0.0000	0.0000
127.3528	0.0000	0.0000
110.5779	0.0000	0.0000
98.4882	0.0000	0.0000
93.1289	0.0000	0.0000
122.3195	0.0000	0.0000
144.3832	0.0000	0.0000
147.2358	0.0000	0.0000

118.5577	0.0000	0.0000
96.5406	0.0000	0.0000
100.6104	0.0000	0.0000
108.3923	0.0000	0.0000
120.1661	0.0000	0.0000
130.1177	0.0000	0.0000
106.6268	0.0000	0.0000
85.1353	0.0000	0.0000
91.0739	0.0000	0.0000
101.0061	0.0000	0.0000
113.5385	0.0000	0.0000
111.7109	0.0000	0.0000
111.4000	0.0000	0.0000
106.9457	0.0000	0.0000
110.8374	0.0000	0.0000
105.7312	0.0000	0.0000
122.6784	0.0000	0.0000
106.1371	0.0000	0.0000
89.1205	0.0000	0.0000
94.1918	0.0000	0.0000
107.9109	0.0000	0.0000
113.8711	0.0000	0.0000
108.5826	0.0000	0.0000
94.3071	0.0000	0.0000
104.9309	0.0000	0.0000
128.5409	0.0000	0.0000
122.7149	0.0000	0.0000
106.6118	0.0000	0.0000
104.7922	0.0000	0.0000
121.6589	0.0000	0.0000
114.2220	0.0000	0.0000
122.0394	0.0000	0.0000
91.2602	0.0000	0.0000
87.1817	0.0000	0.0000
102.7871	0.0000	0.0000
105.9644	0.0000	0.0000
104.9030	0.0000	0.0000
106.3553	0.0000	0.0000
123.8026	0.0000	0.0000
116.6937	0.0000	0.0000
104.5902	0.0000	0.0000
95.0541	0.0000	0.0000
101.2829	0.0000	0.0000
118.5937	0.0000	0.0000
109.9374	0.0000	0.0000
113.2859	0.0000	0.0000
117.1149	0.0000	0.0000
115.3876	0.0000	0.0000
109.7861	0.0000	0.0000
78.7585	0.0000	0.0000
81.6589	0.0000	0.0000
92.1550	0.0000	0.0000
104.2933	0.0000	0.0000
107.6709	0.0000	0.0000
124.2487	0.0000	0.0000
131.8950	0.0000	0.0000
136.8412	0.0000	0.0000
97.6585	0.0000	0.0000
91.0802	0.0000	0.0000
103.3281	0.0000	0.0000
112.1975	0.0000	0.0000

106.8151	0.0000	0.0000
88.5582	0.0000	0.0000
89.9289	0.0000	0.0000
100.5267	0.0000	0.0000
108.1068	0.0000	0.0000
113.9731	0.0000	0.0000
111.9690	0.0000	0.0000
120.7511	0.0000	0.0000
118.4778	0.0000	0.0000
95.5690	0.0000	0.0000
84.7534	0.0000	0.0000
104.5860	0.0000	0.0000
123.0853	0.0000	0.0000
117.4334	0.0000	0.0000
104.2902	0.0000	0.0000
104.9476	0.0000	0.0000
99.4381	0.0000	0.0000
113.0523	0.0000	0.0000
96.8774	0.0000	0.0000
102.0698	0.0000	0.0000
106.8754	0.0000	0.0000
107.9363	0.0000	0.0000
103.8300	0.0000	0.0000
111.9610	0.0000	0.0000
103.7445	0.0000	0.0000
87.6587	0.0000	0.0000
96.2895	0.0000	0.0000
111.3685	0.0000	0.0000
93.2888	0.0000	0.0000
126.7879	0.0000	0.0000
108.5720	0.0000	0.0000
115.9351	0.0000	0.0000
80.6998	0.0000	0.0000
96.9822	0.0000	0.0000
108.1039	0.0000	0.0000
129.5788	0.0000	0.0000
88.1288	0.0000	0.0000
93.3072	0.0000	0.0000
96.1698	0.0000	0.0000
125.4199	0.0000	0.0000
81.8973	0.0000	0.0000
84.1325	0.0000	0.0000
107.5185	0.0000	0.0000
127.4437	0.0000	0.0000
101.9632	0.0000	0.0000
112.2257	0.0000	0.0000
107.5106	0.0000	0.0000
103.6478	0.0000	0.0000
90.7154	0.0000	0.0000
103.3607	0.0000	0.0000
100.2306	0.0000	0.0000
108.8072	0.0000	0.0000
104.4153	0.0000	0.0000
110.4750	0.0000	0.0000
114.5393	0.0000	0.0000
105.8304	0.0000	0.0000
86.9599	0.0000	0.0000
105.3896	0.0000	0.0000
104.0422	0.0000	0.0000
108.0624	0.0000	0.0000
97.9613	0.0000	0.0000

95.9008	0.0000	0.0000
91.8496	0.0000	0.0000
95.8347	0.0000	0.0000
91.9176	0.0000	0.0000
95.1095	0.0000	0.0000
90.9903	0.0000	0.0000
99.4264	0.0000	0.0000
95.8360	0.0000	0.0000
110.0027	0.0000	0.0000
115.7845	0.0000	0.0000
104.3813	0.0000	0.0000
97.5592	0.0000	0.0000
90.7750	0.0000	0.0000
111.6642	0.0000	0.0000
101.5581	0.0000	0.0000
104.0928	0.0000	0.0000
100.3070	0.0000	0.0000
94.8662	0.0000	0.0000
102.7272	0.0000	0.0000
94.2268	0.0000	0.0000
116.1854	0.0000	0.0000
94.7688	0.0000	0.0000
92.2693	0.0000	0.0000
94.2879	0.0000	0.0000
120.2107	0.0000	0.0000
115.3242	0.0000	0.0000
98.5676	0.0000	0.0000
81.7490	0.0000	0.0000
76.3591	0.0000	0.0000
91.5586	0.0000	0.0000
108.5613	0.0000	0.0000
107.6676	0.0000	0.0000
115.6798	0.0000	0.0000
92.1576	0.0000	0.0000
90.5245	0.0000	0.0000
98.9430	0.0000	0.0000
118.1988	0.0000	0.0000
115.0558	0.0000	2.9171
114.8430	0.0000	2.9541
88.3336	0.0000	2.9919
83.7104	0.0000	3.0303
95.8071	0.0000	3.0695
82.2438	0.0000	3.1094
94.9810	0.0000	3.1501
101.5718	0.0000	3.1916
95.4284	0.0000	3.2339
84.3830	0.0000	3.2771
101.3047	0.0000	3.3212
112.5671	0.0000	3.3661
123.9575	0.0000	4.4611
113.3572	0.0000	4.5211
102.8778	0.0000	4.5823
90.3528	0.0000	4.6447
92.5041	0.0000	4.7085
100.0705	0.0000	4.7735
93.2999	0.0000	4.8399
80.3387	0.0000	4.9077
92.1840	0.0000	4.9769
121.0422	0.0000	5.0475
103.4519	0.0000	5.1197
102.1029	0.0000	5.1934

102.4606	0.0000	5.2688
117.1394	0.0000	5.3457
121.3093	0.0000	5.4244
107.5889	0.0000	5.5048
89.8897	0.0000	5.5870
101.5633	0.0000	5.6710
102.8079	0.0000	5.7569
104.0983	0.0000	5.8448
98.1491	0.0000	5.9347
93.6395	0.0000	6.0266
99.6396	0.0000	6.1207
98.4607	0.0000	6.2171
109.0538	0.0000	6.3156
108.2193	0.0000	6.4166
102.9242	0.0000	6.5199
108.3315	0.0000	6.6258
100.6391	0.0000	6.7342
101.1834	0.0000	6.8453
119.7729	0.0000	6.9592
110.6918	0.0000	7.0759
88.5100	0.0000	7.1955
80.9045	0.0000	7.3182
84.8286	0.0000	7.4440
126.6424	0.0000	7.5730
112.1993	0.0000	7.7054
130.9971	0.0000	7.8413
83.8996	0.0000	7.9808
122.2760	0.0000	8.1240
83.1314	0.0000	8.2710
91.9061	0.0000	8.4220
91.7503	0.0000	8.5772
107.4875	0.0000	8.7367
95.6049	0.0000	8.9005
111.0855	0.0000	9.0690
101.5052	0.0000	9.2423
117.0335	0.0000	9.4206
89.5803	0.0000	9.6040
95.2056	0.0000	9.7927
98.7321	0.0000	9.9870
98.0579	0.0000	10.1871
99.9911	0.0000	10.3932
98.5027	0.0000	10.6055
98.1816	0.0000	10.8243
106.4215	0.0000	11.0498
101.7142	0.0000	11.2824
95.6384	0.0000	11.5224
87.2278	0.0000	11.7700
87.3268	0.0000	12.0255
106.9289	0.0000	12.2894
106.9345	0.0000	12.5620
97.8231	0.0000	12.8436
91.3186	0.0000	13.1347
87.3777	0.0000	13.4357
100.3438	0.0000	13.7472
102.5170	0.0000	14.0695
94.6940	0.0000	14.4032
83.5556	0.0000	14.7490
80.9559	0.0000	15.1074
86.2361	0.0000	15.4791
99.9830	0.0000	15.8648
99.7280	0.0000	16.2654

102.7824	0.0000	16.6817
106.3817	0.0000	17.1146
107.5555	0.0000	17.5653
108.5480	0.0000	18.0349
88.7552	0.0000	18.5247
91.6316	0.0000	19.2193
93.1128	0.0000	19.7562
100.8771	0.0000	20.3183
80.0950	0.0000	20.9076
102.2413	0.0000	21.5263
98.3664	0.0000	22.1772
90.2815	0.0000	22.8632
76.9588	0.0000	23.5875
98.7979	0.0000	24.3538
122.2590	0.0000	25.1665
112.7044	0.0000	26.0302
122.5347	0.0000	26.9503
94.6056	0.0000	27.9328
83.7479	0.0000	28.9844
87.2917	0.0000	30.1124
108.5907	0.0000	31.3257
109.4290	0.0000	32.6332
130.9987	0.0000	34.0453
109.1880	0.0000	35.5735
129.1667	0.0000	37.2301
112.7214	0.0000	39.0290
118.9691	0.0000	40.9849
119.5582	0.0000	43.1140
105.4352	0.0000	45.4337
111.8130	0.0000	47.9623
108.0535	0.0000	50.7203
100.0190	0.0000	53.7284
113.6970	0.0000	57.0089
115.6775	0.0000	60.5847
101.4669	0.0000	64.4800
95.0603	0.0000	68.7195
107.4350	0.0000	73.3283
112.9155	0.0000	78.3319
112.7003	0.0000	83.7552
122.3604	0.0000	89.6245
110.6744	0.0000	95.9638
98.4085	0.0000	102.7964
100.4085	0.0000	110.1445
122.7416	0.0000	118.0284
130.9625	0.0000	126.4660
131.7567	0.0000	135.4725
116.7088	0.0000	145.0599
105.1318	0.0000	155.2363
109.8299	0.0000	166.0044
109.8900	0.0000	177.3656
128.1731	0.0000	189.3121
133.8017	0.0000	201.8314
154.4109	0.0000	214.9038
155.9762	0.0000	228.5023
150.0638	0.0000	242.5915
158.4399	0.0000	257.1264
149.0961	0.0000	272.0522
190.0686	0.0000	287.3027
207.9098	0.0000	302.7979
198.3510	0.0000	318.4501
230.4253	0.0000	334.1525

247.1960	0.0000	349.7860
270.0869	0.0000	365.2175
276.7220	0.0000	380.3008
295.0653	0.0000	394.8779
348.0072	0.0000	408.7821
423.5861	0.0000	421.8419
499.0213	0.0000	433.8846
579.4677	0.0000	444.7477
622.4330	0.0000	454.2775
646.2629	0.0000	462.3410
745.0943	0.0000	468.8309
773.3629	0.0000	473.6699
948.7082	0.0000	476.8131
900.6743	0.0000	478.2495
878.1915	0.0000	477.9988
834.4064	0.0000	476.1087
675.9910	0.0000	472.6499
596.9230	0.0000	467.7085
559.5310	0.0000	461.3828
493.1557	0.0000	453.7773
409.9350	0.0000	444.9994
422.2859	0.0000	435.1568
444.2120	0.0000	424.3566
478.2535	0.0000	412.7051
461.0890	0.0000	400.3086
456.7652	0.0000	387.2731
444.4833	0.0000	373.7069
455.2996	0.0000	359.7141
388.4606	0.0000	345.4030
368.3382	0.0000	330.8789
267.7231	0.0000	316.2444
237.2824	0.0000	301.5977
193.3268	0.0000	287.0308
173.6757	0.0000	272.6288
208.4659	0.0000	258.4682
205.3487	0.0000	244.6185
156.2967	0.0000	231.1348
134.1995	0.0000	218.0683
135.3685	0.0000	205.4593
116.8257	0.0000	193.3397
122.2040	0.0000	181.7337
157.3171	0.0000	170.6580
141.7843	0.0000	160.1230
125.9840	0.0000	150.1334
117.4953	0.0000	140.6886
104.0147	0.0000	131.7847
107.4609	0.0000	123.4109
118.9419	0.0000	115.5563
116.0795	0.0000	108.2061
125.6654	0.0000	101.4629
113.2044	0.0000	95.0705
94.6460	0.0000	89.1272
97.8677	0.0000	83.6118
101.8563	0.0000	78.5027
110.6849	0.0000	73.7781
107.6069	0.0000	69.4164
113.6748	0.0000	65.3945
126.0922	0.0000	61.6916
108.6421	0.0000	58.2865
120.8123	0.0000	55.1588
109.4162	0.0000	53.2799

112.7696	0.0000	50.6602
126.2242	0.0000	48.2620
100.8351	0.0000	46.0688
90.2952	0.0000	44.0651
114.1186	0.0000	42.2357
88.1913	0.0000	40.5674
119.1328	0.0000	39.0478
129.5444	0.0000	37.6653
93.8635	0.0000	36.4096
127.8184	0.0000	35.2711
108.9418	0.0000	34.2414
104.3207	0.0000	33.3127
122.3250	0.0000	32.4782
104.0890	0.0000	31.7318
94.8894	0.0000	31.0680
99.7799	0.0000	30.4821
113.0323	0.0000	29.9698
107.3109	0.0000	29.5275
96.8995	0.0000	29.1518
93.6875	0.0000	28.8398
85.3618	0.0000	28.5890
87.6465	0.0000	28.4767
106.1214	0.0000	28.8638
113.8048	0.0000	28.7896
106.2856	0.0000	28.7683
113.9865	0.0000	28.7981
101.6833	0.0000	28.8772
103.0385	0.0000	29.0036
89.5193	0.0000	29.1755
114.2339	0.0000	29.3907
114.5464	0.0000	29.6469
92.0661	0.0000	29.9418
100.0535	0.0000	30.2725
117.2455	0.0000	30.6360
113.6011	0.0000	31.0290
111.1251	0.0000	31.4477
96.2731	0.0000	31.8880
104.0305	0.0000	32.3451
96.6832	0.0000	32.8140
94.7885	0.0000	33.2888
119.6586	0.0000	33.7635
115.2320	0.0000	34.2311
120.6810	0.0000	34.6842
123.4401	0.0000	35.1152
117.4935	0.0000	35.5158
115.3622	0.0000	35.8776
118.6057	0.0000	36.1922
130.5073	0.0000	36.4514
145.7367	0.0000	36.6474
143.1037	0.0000	36.7734
141.8794	0.0000	36.8236
124.6345	0.0000	36.7937
133.0104	0.0000	36.6809
143.9070	0.0000	36.4841
139.6959	0.0000	36.2042
145.5702	0.0000	35.8437
139.5399	0.0000	35.4067
128.2869	0.0000	34.8986
101.6327	0.0000	34.3262
98.6439	0.0000	33.6966
101.6220	0.0000	33.0178

118.3074	0.0000	32.2978
121.1869	0.0000	31.5444
129.3450	0.0000	30.7654
120.9234	0.0000	31.9173
116.9787	0.0000	31.1286
101.7022	0.0000	30.3351
83.1479	0.0000	29.5422
75.1140	0.0000	28.7552
89.2843	0.0000	27.9785
125.5072	0.0000	27.2162
106.5424	0.0000	26.4716
127.6567	0.0000	25.7477
83.1035	0.0000	25.0471
102.2896	0.0000	24.3719
111.2466	0.0000	23.7238
86.8637	0.0000	23.1043
106.8552	0.0000	22.5145
57.6638	0.0000	21.9553
84.0519	0.0000	21.4271
87.3892	0.0000	20.9303
94.9145	0.0000	20.4650
112.3988	0.0000	20.0311
107.8210	0.0000	19.6284
120.9824	0.0000	19.2564
97.2468	0.0000	18.9146
96.9978	0.0000	18.6023
91.0579	0.0000	18.3188
82.8118	0.0000	18.0632
92.7594	0.0000	17.8347
82.2767	0.0000	17.6323
104.7437	0.0000	17.4552
103.2179	0.0000	17.3022
92.0072	0.0000	17.1725
111.3668	0.0000	17.0651
89.8942	0.0000	16.9792
82.2558	0.0000	16.9138
104.4647	0.0000	16.8681
95.6014	0.0000	16.8414
109.8570	0.0000	16.8329
111.6826	0.0000	16.8420
90.3132	0.0000	16.8682
95.4799	0.0000	16.9110
79.3836	0.0000	16.9700
89.0400	0.0000	17.0449
107.6409	0.0000	17.1355
105.2352	0.0000	17.2417
100.3374	0.0000	17.3635
100.8026	0.0000	14.6408
99.1207	0.0000	14.8295
102.2100	0.0000	15.0338
97.8183	0.0000	15.2542
110.1940	0.0000	15.4912
105.7080	0.0000	15.7456
94.0173	0.0000	16.0183
86.4728	0.0000	16.3102
102.5782	0.0000	16.6224
101.6789	0.0000	16.9564
78.7192	0.0000	17.3134
97.1411	0.0000	17.6952
97.5002	0.0000	18.1036
99.9264	0.0000	18.5406

100.8693	0.0000	17.9767
94.8288	0.0000	18.4902
97.9363	0.0000	19.0393
93.5597	0.0000	19.7220
91.9551	0.0000	20.3517
73.3018	0.0000	21.0259
94.8298	0.0000	21.7483
133.9846	0.0000	22.5223
104.2634	0.0000	23.3521
119.9425	0.0000	24.2417
108.6278	0.0000	25.1953
71.9521	0.0000	26.2176
91.8681	0.0000	27.3132
86.7826	0.0000	28.4869
84.2546	0.0000	29.7438
102.8247	0.0000	31.0889
118.0316	0.0000	32.5275
102.5324	0.0000	34.0645
97.6180	0.0000	35.7056
96.7102	0.0000	37.4558
78.4058	0.0000	39.3203
79.3212	0.0000	41.3041
85.1204	0.0000	43.4120
83.0845	0.0000	45.6487
112.9978	0.0000	48.0184
127.9743	0.0000	50.5250
127.5955	0.0000	53.1719
104.6973	0.0000	55.9625
77.2382	0.0000	58.8991
85.7947	0.0000	61.9834
98.4721	0.0000	65.2164
104.7332	0.0000	68.5984
123.8806	0.0000	72.1285
99.5224	0.0000	75.8052
94.8373	0.0000	79.6256
103.0539	0.0000	83.5857
98.3568	0.0000	87.6798
113.7726	0.0000	91.9022
118.6018	0.0000	96.2443
118.1321	0.0000	100.6965
131.7668	0.0000	105.2476
130.9426	0.0000	109.8847
130.2995	0.0000	114.5931
122.6600	0.0000	119.3566
120.9939	0.0000	124.1569
129.4571	0.0000	128.9741
140.4396	0.0000	133.7861
182.0031	0.0000	138.5707
186.1979	0.0000	143.3023
155.0584	0.0000	147.9544
167.0548	0.0000	152.4994
175.8359	0.0000	156.9085
168.9106	0.0000	161.1524
184.9690	0.0000	165.2015
245.5541	0.0000	169.0269
253.3136	0.0000	172.6004
263.3886	0.0000	175.8972
276.5592	0.0000	178.8943
239.2592	0.0000	181.5729
251.6203	0.0000	183.9191
334.3545	0.0000	185.9245

309.2011	0.0000	187.5862
395.9410	0.0000	188.9079
426.9432	0.0000	189.8987
331.5516	0.0000	190.5736
404.9691	0.0000	190.9520
355.1855	0.0000	191.0575
306.6887	0.0000	190.9161
304.6309	0.0000	190.5556
276.0622	0.0000	190.0043
263.9903	0.0000	189.2900
248.6868	0.0000	188.4393
252.1008	0.0000	187.4763
212.6666	0.0000	186.4229
218.4093	0.0000	185.2977
215.9657	0.0000	184.1163
208.1704	0.0000	182.8910
223.0875	0.0000	181.6311
217.6689	0.0000	180.3434
205.6585	0.0000	179.0322
224.8712	0.0000	177.7001
226.8083	0.0000	176.3489
221.8632	0.0000	174.9797
223.3487	0.0000	173.5942
255.1773	0.0000	172.1952
257.5846	0.0000	170.7868
252.9835	0.0000	169.3757
268.9537	0.0000	167.9714
276.5460	0.0000	166.5857
255.9146	0.0000	165.2337
262.7584	0.0000	163.9328
241.2203	0.0000	162.7029
235.7802	0.0000	161.5657
235.4765	0.0000	160.5439
186.6737	0.0000	159.6614
170.0313	0.0000	158.9414
167.4616	0.0000	158.4072
144.2257	0.0000	158.0807
146.3516	0.0000	157.9827
151.8484	0.0000	157.9488
134.0776	0.0000	158.3637
149.1056	0.0000	159.0567
158.9980	0.0000	160.0397
155.5295	0.0000	161.3221
162.4622	0.0000	162.9105
140.7744	0.0000	164.8093
120.0130	0.0000	167.0200
128.7947	0.0000	169.5414
142.3313	0.0000	172.3694
151.5785	0.0000	175.4974
167.6002	0.0000	178.9160
167.9601	0.0000	182.6128
142.9041	0.0000	186.5723
133.2272	0.0000	190.7756
127.0335	0.0000	195.2020
134.4029	0.0000	199.8259
198.2239	0.0000	204.6188
193.7457	0.0000	209.5484
200.0615	0.0000	214.5788
204.2569	0.0000	219.6699
185.3488	0.0000	224.7780
229.2278	0.0000	229.8553

211.0713	0.0000	234.8503
247.2982	0.0000	239.7076
259.0956	0.0000	244.3705
290.3065	0.0000	248.7782
344.1848	0.0000	252.8695
374.9722	0.0000	256.5828
386.1121	0.0000	259.8578
442.0251	0.0000	262.6372
443.7727	0.0000	264.8680
460.0294	0.0000	266.5037
472.1577	0.0000	267.5052
483.3228	0.0000	267.8434
497.1125	0.0000	267.4992
503.6813	0.0000	266.4644
472.9247	0.0000	264.7425
445.8392	0.0000	262.3479
426.6609	0.0000	259.3053
405.7444	0.0000	255.6488
369.8677	0.0000	251.4200
302.1579	0.0000	246.6668
251.3844	0.0000	241.4422
239.2486	0.0000	235.8000
203.9445	0.0000	229.7972
208.2919	0.0000	223.4900
239.7299	0.0000	216.9333
199.8169	0.0000	210.1799
168.3301	0.0000	203.2800
158.6851	0.0000	196.2804
139.7635	0.0000	189.2243
135.1013	0.0000	182.1516
131.8912	0.0000	175.0992
121.1472	0.0000	168.0979
115.6449	0.0000	161.1778
119.8971	0.0000	154.3648
124.8224	0.0000	147.6817
110.2865	0.0000	141.1487
119.0719	0.0000	134.7830
126.1335	0.0000	128.5996
107.3097	0.0000	122.6109
97.6129	0.0000	116.8281
101.4859	0.0000	111.2581
97.7663	0.0000	105.9083
106.8479	0.0000	100.7833
90.9814	0.0000	95.8864
107.0353	0.0000	91.2192
108.4044	0.0000	86.7821
103.8738	0.0000	82.5741
116.0400	0.0000	78.5932
101.8556	0.0000	74.8361
98.9645	0.0000	71.2991
107.0388	0.0000	67.9766
96.3228	0.0000	64.8632
91.3998	0.0000	61.9525
94.9450	0.0000	59.2377
83.5074	0.0000	56.7114
95.5407	0.0000	54.3657
112.3696	0.0000	52.1925
104.9482	0.0000	50.1836
93.7575	0.0000	48.3304
128.5720	0.0000	46.6243
67.2035	0.0000	45.0564

91.1698	0.0000	43.6179
100.8930	0.0000	42.3003
91.0716	0.0000	41.0948
101.0069	0.0000	39.9927
113.0799	0.0000	38.9857
111.4652	0.0000	38.0652
107.8023	0.0000	37.2231
91.6344	0.0000	36.4513
79.4865	0.0000	35.7418
85.3748	0.0000	35.0869
90.5604	0.0000	34.4791
109.8022	0.0000	33.9112
133.2733	0.0000	33.3762
130.4487	0.0000	32.8676
111.9151	0.0000	32.3789
90.0050	0.0000	31.9045
99.6902	0.0000	31.5013
82.8747	0.0000	31.0406
104.7916	0.0000	30.5798
119.1784	0.0000	30.1153
104.9239	0.0000	29.6444
128.7954	0.0000	29.1647
116.6289	0.0000	28.6747
89.5666	0.0000	28.1733
107.2197	0.0000	27.6603
110.2006	0.0000	27.1357
111.2775	0.0000	26.6001
120.4908	0.0000	26.0545
112.9809	0.0000	25.5001
103.3000	0.0000	24.9384
104.7640	0.0000	24.3711
93.5741	0.0000	23.7998
99.1325	0.0000	23.2262
108.9346	0.0000	22.6521
98.8511	0.0000	22.0792
94.3205	0.0000	21.5089
102.4592	0.0000	20.9430
101.8909	0.0000	20.3825
101.7842	0.0000	19.8289
92.9551	0.0000	19.2832
96.4068	0.0000	18.7465
88.3830	0.0000	19.7448
74.0096	0.0000	19.2418
82.0222	0.0000	18.7504
86.8414	0.0000	18.2712
97.1599	0.0000	17.8045
93.3176	0.0000	17.3510
93.0466	0.0000	16.9108
92.4934	0.0000	16.4842
90.1759	0.0000	15.9532
107.4997	0.0000	15.5556
99.1431	0.0000	15.1720
101.3389	0.0000	14.8024
93.2015	0.0000	14.4466
93.8711	0.0000	14.1046
80.7474	0.0000	13.7763
84.0274	0.0000	13.4614
61.5307	0.0000	13.1596
81.4548	0.0000	12.8708
100.9819	0.0000	12.5946
102.1027	0.0000	12.3307

106.7587	0.0000	12.0787
90.7626	0.0000	10.8621
88.1894	0.0000	10.6433
69.4487	0.0000	10.4351
56.0287	0.0000	10.2372
85.6258	0.0000	10.0491
92.0285	0.0000	9.8705
85.7179	0.0000	9.7009
101.1927	0.0000	9.5400
107.2442	0.0000	9.3873
81.7715	0.0000	9.2425
92.3416	0.0000	9.1052
91.6576	0.0000	8.9750
70.6448	0.0000	8.8516
81.0283	0.0000	8.7345
98.0873	0.0000	8.6236
82.7447	0.0000	8.5184
79.9450	0.0000	8.4186
87.8503	0.0000	8.3241
81.8587	0.0000	8.2344
68.9363	0.0000	8.1494
86.4313	0.0000	8.0687
93.9398	0.0000	7.9923
94.9159	0.0000	7.9197
103.2509	0.0000	7.8510
93.9142	0.0000	7.7858
82.9662	0.0000	7.7240
78.7467	0.0000	7.6654
70.8492	0.0000	7.6099
67.3964	0.0000	7.5574
79.7778	0.0000	6.9147
76.4723	0.0000	6.8739
91.9675	0.0000	6.8356
109.7690	0.0000	6.7996
100.0048	0.0000	6.7660
94.0820	0.0000	6.7346
87.5196	0.0000	6.7054
78.3129	0.0000	6.6783
80.5583	0.0000	6.6533
77.5786	0.0000	6.6302
84.6165	0.0000	6.6090
81.6234	0.0000	6.5898
101.1647	0.0000	6.5723
84.6928	0.0000	6.5567
79.2382	0.0000	6.5429
73.9185	0.0000	6.5308
90.9341	0.0000	6.5205
103.9157	0.0000	6.5118
87.7757	0.0000	6.5048
82.7469	0.0000	6.4995
77.0609	0.0000	6.4959
73.4612	0.0000	6.4938
97.2916	0.0000	6.4934
79.6515	0.0000	6.4946
91.4418	0.0000	6.4975
90.1381	0.0000	6.5019
95.8808	0.0000	6.5079
82.3169	0.0000	6.5155
95.5027	0.0000	6.5248
74.9451	0.0000	6.5356
99.6398	0.0000	7.4006

65.4135	0.0000	7.4216
81.1294	0.0000	7.4444
88.3502	0.0000	7.4689
107.7843	0.0000	7.4950
82.3870	0.0000	7.5230
104.9154	0.0000	7.5526
76.2919	0.0000	7.5841
76.8275	0.0000	7.6173
81.3124	0.0000	7.6523
86.7676	0.0000	7.6891
90.9274	0.0000	7.7278
89.9920	0.0000	7.7683
78.8950	0.0000	7.8108
76.8575	0.0000	7.8551
75.6754	0.0000	7.9014
73.9064	0.0000	7.9497
84.6893	0.0000	7.9999
92.8064	0.0000	8.0522
92.0828	0.0000	8.1066
79.8713	0.0000	8.1631
94.4858	0.0000	8.2218
81.4021	0.0000	8.2827
64.3717	0.0000	6.4187
70.4450	0.0000	6.5036
94.8333	0.0000	6.5906
106.5794	0.0000	6.6797
98.4418	0.0000	6.7709
87.0093	0.0000	6.8645
101.4219	0.0000	6.9603
81.9831	0.0000	7.0585
86.8604	0.0000	7.1592
97.1713	0.0000	7.2625
96.9977	0.0000	7.3684
89.7329	0.0000	7.4770
108.9592	0.0000	7.5885
85.3424	0.0000	7.7029
78.6114	0.0000	8.9068
84.4958	0.0000	9.0362
94.3802	0.0000	9.1690
71.6909	0.0000	9.6810
73.7512	0.0000	9.8241
77.8302	0.0000	9.9710
88.5033	0.0000	10.1220
69.8144	0.0000	10.2771
84.8049	0.0000	10.4368
100.0574	0.0000	10.6010
93.1040	0.0000	10.7700
78.9803	0.0000	10.9442
103.9807	0.0000	11.1236
75.7209	0.0000	11.3087
66.5948	0.0000	11.4996
93.2629	0.0000	11.6968
76.1618	0.0000	11.9004
73.0993	0.0000	12.1110
94.8947	0.0000	12.3289
79.1753	0.0000	12.5545
83.1762	0.0000	12.7883
99.3722	0.0000	13.0308
99.4660	0.0000	13.2824
78.0881	0.0000	13.5438
99.5120	0.0000	13.8156

76.3039	0.0000	14.0983
51.7138	0.0000	14.3929
77.5805	0.0000	14.6999
92.1713	0.0000	15.0201
92.5593	0.0000	15.3546
116.2134	0.0000	15.7041
109.4628	0.0000	16.0698
92.0131	0.0000	16.4526
84.3831	0.0000	16.8538
68.9261	0.0000	17.2745
63.6576	0.0000	17.7161
71.1697	0.0000	18.1799
71.4129	0.0000	18.6675
75.8533	0.0000	19.1802
89.7496	0.0000	19.7200
95.3898	0.0000	20.2885
100.5282	0.0000	20.8876
98.4330	0.0000	21.5193
86.6902	0.0000	22.1856
75.0650	0.0000	22.8888
72.2802	0.0000	23.6309
71.6563	0.0000	24.4147
88.0316	0.0000	25.2423
101.8495	0.0000	26.1165
98.4989	0.0000	27.0402
91.6032	0.0000	28.0157
85.1225	0.0000	29.0464
92.8549	0.0000	30.1348
86.2215	0.0000	31.8475
84.6377	0.0000	33.0653
85.9554	0.0000	34.3506
107.0966	0.0000	35.7061
90.2057	0.0000	37.1353
80.6260	0.0000	38.6417
100.8433	0.0000	40.5868
104.7849	0.0000	42.2595
86.5169	0.0000	44.0183
102.6071	0.0000	45.8672
90.0448	0.0000	47.7141
84.9494	0.0000	49.7518
79.6170	0.0000	51.8872
103.5308	0.0000	54.1236
98.7978	0.0000	56.4623
86.8606	0.0000	58.9060
90.3682	0.0000	61.4570
97.0430	0.0000	64.1155
94.2512	0.0000	66.8840
125.9712	0.0000	69.7620
111.6494	0.0000	72.7512
80.2982	0.0000	75.8503
104.9353	0.0000	79.0602
113.7624	0.0000	82.3788
94.0719	0.0000	85.8053
91.6751	0.0000	89.3389
126.5536	0.0000	92.9756
125.0395	0.0000	96.7143
104.5323	0.0000	100.5500
120.9213	0.0000	104.4808
121.8790	0.0000	108.5002
95.8874	0.0000	112.6053
108.8212	0.0000	116.7884

130.6864	0.0000	121.0441
112.1733	0.0000	125.3663
118.6425	0.0000	129.7452
115.5450	0.0000	134.1739
135.0727	0.0000	138.6406
116.3396	0.0000	143.1365
120.1138	0.0000	147.6476
121.6129	0.0000	152.1627
144.7178	0.0000	156.6653
133.9852	0.0000	161.1415
137.6694	0.0000	165.5720
141.4503	0.0000	169.9391
144.1497	0.0000	174.2238
144.8192	0.0000	178.4025
150.9598	0.0000	182.4545
176.0993	0.0000	186.3860
199.7916	0.0000	190.1104
208.6960	0.0000	193.6323
213.6278	0.0000	196.9278
215.3671	0.0000	199.9699
238.0604	0.0000	202.7345
263.1895	0.0000	205.1985
283.8295	0.0000	207.3386
314.6282	0.0000	209.1361
389.8421	0.0000	210.5729
403.1430	0.0000	211.6358
417.7843	0.0000	212.3142
466.3026	0.0000	212.6020
498.5845	0.0000	212.4971
524.2179	0.0000	212.0018
522.3073	0.0000	211.1221
454.3883	0.0000	209.8691
481.1562	0.0000	208.2564
492.6287	0.0000	206.3023
425.9187	0.0000	204.0265
366.9145	0.0000	201.4529
432.2074	0.0000	198.6052
361.5794	0.0000	195.5107
327.3911	0.0000	192.1951
308.2772	0.0000	188.6869
332.0835	0.0000	185.0128
266.6478	0.0000	181.1984
206.2115	0.0000	177.2717
217.8343	0.0000	173.2558
196.2319	0.0000	169.1764
174.7088	0.0000	165.0544
148.0546	0.0000	160.9129
186.1485	0.0000	156.7700
114.0529	0.0000	152.6461
116.1514	0.0000	148.5576
168.8484	0.0000	144.5194
157.6035	0.0000	140.5481
120.3178	0.0000	136.6553
151.1286	0.0000	132.8551
133.6843	0.0000	129.1572
109.3561	0.0000	125.5732
105.7826	0.0000	122.1110
115.6793	0.0000	118.7806
122.4769	0.0000	115.5885
116.9630	0.0000	112.5411
136.1554	0.0000	109.6456

126.8799	0.0000	106.9060
102.9855	0.0000	104.3283
84.6787	0.0000	101.9153
110.6696	0.0000	99.6715
89.3047	0.0000	97.5988
106.5291	0.0000	95.7006
109.8361	0.0000	93.9777
112.2981	0.0000	92.4324
115.9423	0.0000	91.0652
129.6314	0.0000	89.8764
116.3933	0.0000	89.1698
116.5859	0.0000	88.3407
116.1564	0.0000	87.6897
105.1656	0.0000	87.6475
112.0590	0.0000	87.3526
108.5061	0.0000	87.2322
102.7631	0.0000	87.2844
109.3521	0.0000	87.5072
113.1991	0.0000	87.8985
122.0879	0.0000	88.4555
116.6431	0.0000	89.1759
111.3343	0.0000	90.0563
119.8535	0.0000	91.0941
125.1131	0.0000	92.2854
108.6734	0.0000	93.6273
97.4249	0.0000	95.1154
99.1280	0.0000	96.7461
122.6362	0.0000	98.5157
108.7422	0.0000	100.4191
112.7355	0.0000	102.4524
134.9071	0.0000	104.6100
153.5644	0.0000	106.8876
122.9541	0.0000	109.2789
122.8157	0.0000	111.7791
146.7756	0.0000	114.3809
125.6338	0.0000	117.0792
118.8231	0.0000	119.8658
136.7276	0.0000	122.7338
152.0171	0.0000	125.6762
144.8023	0.0000	128.6833
148.7475	0.0000	131.7476
162.4295	0.0000	134.8585
178.8880	0.0000	138.0075
178.7918	0.0000	141.1831
176.8227	0.0000	144.3758
187.1680	0.0000	147.5734
210.5909	0.0000	150.7652
180.8419	0.0000	153.9407
212.7308	0.0000	157.0871
229.9906	0.0000	160.1947
288.4437	0.0000	163.2515
274.1124	0.0000	166.2487
284.5246	0.0000	169.1757
258.8076	0.0000	172.0257
257.3863	0.0000	174.7903
254.7776	0.0000	177.4648
290.9688	0.0000	180.0458
289.7044	0.0000	182.5297
273.4368	0.0000	184.9173
285.9445	0.0000	187.2084
284.4090	0.0000	189.4072

273.6089	0.0000	191.5168
264.6764	0.0000	193.5443
233.1068	0.0000	195.4955
226.7308	0.0000	197.3795
200.2753	0.0000	199.2040
179.3956	0.0000	200.9786
159.9696	0.0000	202.7130
164.7760	0.0000	204.4157
176.4138	0.0000	206.0963
169.0163	0.0000	207.7623
183.1322	0.0000	209.4221
185.8996	0.0000	211.0813
159.3693	0.0000	212.7463
161.0288	0.0000	214.4204
167.9004	0.0000	216.1068
155.3310	0.0000	217.8074
153.1041	0.0000	219.5211
152.0446	0.0000	221.2470
150.7873	0.0000	222.9812
169.4061	0.0000	224.7194
171.9601	0.0000	226.4544
142.6239	0.0000	228.1788
151.4251	0.0000	229.8822
167.7511	0.0000	231.5540
173.9516	0.0000	233.1819
184.0276	0.0000	234.7515
197.3655	0.0000	236.2488
203.3348	0.0000	237.6572
238.5032	0.0000	238.9609
260.9966	0.0000	240.1427
309.6207	0.0000	241.1861
340.3488	0.0000	242.0739
348.8199	0.0000	242.7906
395.2777	0.0000	243.3206
453.1206	0.0000	243.6505
416.3663	0.0000	243.7681
520.9749	0.0000	243.6634
533.5825	0.0000	243.3286
498.0020	0.0000	242.7588
559.5302	0.0000	241.9514
581.9233	0.0000	240.9072
557.7906	0.0000	239.6291
549.0994	0.0000	238.1238
484.1619	0.0000	236.3999
506.2832	0.0000	234.4683
398.9988	0.0000	232.3433
336.9185	0.0000	230.0396
316.5456	0.0000	227.5751
310.9055	0.0000	224.9671
263.8598	0.0000	222.2358
225.3558	0.0000	219.3997
272.9153	0.0000	216.4801
251.2802	0.0000	213.4960
201.7334	0.0000	210.4665
183.3064	0.0000	207.4117
172.5795	0.0000	204.3487
155.5908	0.0000	201.2961
138.6789	0.0000	198.2689
141.1194	0.0000	195.2840
147.9538	0.0000	192.3540
151.5913	0.0000	189.4934

135.1606	0.0000	186.7128
133.9049	0.0000	184.0240
144.3289	0.0000	181.4361
149.7417	0.0000	178.9568
129.0400	0.0000	176.5946
123.7736	0.0000	174.3546
124.5400	0.0000	172.2430
132.5529	0.0000	170.2627
119.0916	0.0000	168.4179
115.2224	0.0000	166.7098
129.8058	0.0000	165.1402
139.5405	0.0000	163.7088
128.5281	0.0000	162.4147
118.2054	0.0000	161.2566
124.4873	0.0000	160.2314
118.9116	0.0000	159.3359
128.4091	0.0000	158.5653
126.1344	0.0000	157.9145
130.7323	0.0000	157.3770
137.6826	0.0000	156.9459
131.4439	0.0000	156.6130
134.1538	0.0000	156.3694
150.8799	0.0000	156.2056
164.0183	0.0000	156.1109
184.1895	0.0000	156.0743
173.0994	0.0000	156.0840
160.9989	0.0000	156.1273
174.5592	0.0000	156.1915
147.0748	0.0000	156.2633
147.0826	0.0000	156.3289
166.6227	0.0000	156.3748
193.1095	0.0000	156.3872
178.6268	0.0000	156.3527
246.1043	0.0000	156.2582
225.8146	0.0000	156.0912
270.5952	0.0000	155.8400
228.5914	0.0000	155.4936
280.4582	0.0000	155.0424
237.2259	0.0000	154.4778
206.6785	0.0000	153.7928
260.0474	0.0000	152.9817
248.2350	0.0000	152.0398
233.0935	0.0000	150.9653
270.0544	0.0000	149.6951
251.8387	0.0000	148.3535
279.4620	0.0000	146.8800
261.7397	0.0000	145.2785
284.1240	0.0000	143.5530
244.1521	0.0000	141.7100
245.7355	0.0000	139.7559
227.2717	0.0000	137.6978
208.4579	0.0000	135.5451
244.1113	0.0000	133.3054
210.8226	0.0000	130.9891
218.4805	0.0000	128.6044
177.1972	0.0000	126.1620
159.1702	0.0000	123.6703
168.2753	0.0000	121.1398
163.4039	0.0000	118.5784
164.4371	0.0000	115.9962
142.0237	0.0000	113.4012

144.8891	0.0000	110.8007
126.4396	0.0000	108.2038
129.2504	0.0000	105.6164
126.4913	0.0000	103.0465
123.3480	0.0000	100.4993
120.4848	0.0000	97.9818
104.4411	0.0000	95.4983
109.1520	0.0000	93.0548
123.1852	0.0000	90.6555
120.5453	0.0000	88.3038
124.7572	0.0000	86.0046
103.5884	0.0000	83.7603
100.6331	0.0000	81.5750
105.6246	0.0000	79.4502
103.8985	0.0000	75.8741
88.0766	0.0000	73.8914
88.2413	0.0000	71.9764
94.6028	0.0000	70.1302
99.9840	0.0000	68.3537
121.8624	0.0000	66.6489
105.8984	0.0000	65.0159
119.4434	0.0000	63.4560
119.8972	0.0000	61.9691
100.4748	0.0000	60.5562
128.6109	0.0000	59.2170
110.4758	0.0000	57.9520
101.4270	0.0000	56.7608
106.1033	0.0000	55.6438
108.1205	0.0000	54.6006
130.1169	0.0000	53.6307
94.8875	0.0000	52.7343
100.7520	0.0000	51.9107
92.1590	0.0000	51.1601
94.9777	0.0000	50.4817
99.7162	0.0000	49.8755
115.6841	0.0000	49.3410
94.4628	0.0000	48.8780
81.5199	0.0000	48.4862
98.7237	0.0000	48.1652
106.5857	0.0000	47.9148
105.1579	0.0000	47.7347
91.9607	0.0000	47.6246
97.0597	0.0000	47.5841
131.4622	0.0000	47.6130
90.1475	0.0000	47.7110
96.2535	0.0000	47.8776
103.6169	0.0000	48.1124
110.0841	0.0000	48.4152
100.7425	0.0000	48.7852
96.7572	0.0000	49.2220
111.5503	0.0000	49.7250
107.0713	0.0000	50.2935
96.9334	0.0000	50.9267
95.9577	0.0000	51.6240
95.3525	0.0000	52.3841
83.7591	0.0000	53.2064
75.2552	0.0000	54.0893
92.0842	0.0000	55.0318
101.6186	0.0000	56.0329
108.6221	0.0000	57.0904
110.3714	0.0000	58.2034

108.6624	0.0000	59.3695
114.2556	0.0000	60.5872
112.7824	0.0000	61.8540
107.7757	0.0000	63.1682
87.8261	0.0000	64.5265
84.1077	0.0000	65.9268
85.2628	0.0000	67.3662
98.5742	0.0000	68.8411
93.7772	0.0000	70.3487
98.2296	0.0000	71.8847
114.3282	0.0000	73.4458
119.4087	0.0000	75.0270
96.4140	0.0000	76.6246
108.5352	0.0000	78.2328
127.9475	0.0000	79.8470
123.8383	0.0000	81.4618
130.9125	0.0000	83.0707
130.1466	0.0000	84.6681
133.2446	0.0000	86.2468
139.3363	0.0000	87.8006
133.2775	0.0000	89.3215
133.4086	0.0000	90.8027
150.6161	0.0000	92.2357
166.4464	0.0000	93.6134
153.8226	0.0000	94.9271
170.7568	0.0000	96.1688
198.0891	0.0000	97.3308
173.5110	0.0000	98.4046
206.5148	0.0000	99.3829
181.2953	0.0000	100.2577
205.3887	0.0000	101.0227
227.6895	0.0000	101.6708
213.2578	0.0000	102.1968
225.1786	0.0000	102.5954
222.3758	0.0000	102.8626
266.1306	0.0000	102.9953
277.0414	0.0000	102.9914
244.5519	0.0000	102.8497
285.0846	0.0000	102.5703
237.1818	0.0000	102.1543
251.0900	0.0000	101.6039
229.8497	0.0000	100.9220
227.7151	0.0000	100.1131
244.4989	0.0000	99.1819
194.5197	0.0000	98.1338
212.8333	0.0000	96.9757
194.5973	0.0000	95.7139
194.5479	0.0000	94.3562
163.7628	0.0000	92.9096
160.6714	0.0000	91.3824
165.3446	0.0000	89.7819
158.3067	0.0000	88.1166
182.4532	0.0000	86.3934
176.7892	0.0000	84.6208
151.0978	0.0000	82.8058
130.9038	0.0000	80.1097
124.6024	0.0000	78.2377
131.0701	0.0000	76.3431
115.7977	0.0000	74.4330
109.5405	0.0000	72.5123
104.8790	0.0000	70.5873

109.1936	0.0000	68.6621
103.4873	0.0000	66.7424
95.9196	0.0000	64.8321

_pd_meas_number_of_points	2118
_pd_proc_number_of_points	2118

data_2P

_audit_creation_date	'2011/02/22 05:46:49 PM'
_audit_creation_method	'Generated by X_Pert HighScore Plus 2.2.5'

_chemical_name_systematic
;
?
;

_chemical_formula_sum
;
C4 H4 Cl2 Cu N2
;

loop_
_symmetry_equiv_pos_as_xyz
'X, Y, Z'
'-X, Y, -Z'
'-X, -Y, -Z'
'X, -Y, Z'
'X+1/2, Y+1/2, Z'
'-X+1/2, Y+1/2, -Z'
'-X+1/2, -Y+1/2, -Z'
'X+1/2, -Y+1/2, Z'

_xact_pref_orient_vector_h	0.00000000
_xact_pref_orient_vector_k	0.00000000
_xact_pref_orient_vector_l	1.00000000
_xact_pref_orient_param	1.000000
_xact_scale_factor	0.000100
_xact_cagliotti_U	9.362709
_xact_cagliotti_V	0.000000
_xact_cagliotti_W	-0.996191
_xact_shape_param_1	0.600000
_xact_shape_param_2	0.000000
_xact_shape_param_3	0.000000
_xact_asym_param_1	0.000000
_xact_asym_param_2	0.000000
_cell_length_a	12.020 (1)
_cell_length_b	6.8932 (5)
_cell_length_c	3.7129 (3)
_cell_angle_alpha	90
_cell_angle_beta	95.714 (6)
_cell_angle_gamma	90
_symmetry_space_group_name_H-M	'C 1 2/m 1'
_symmetry_Int_Tables_number	12

```
loop_
  _atom_site_label
  _atom_site_type_symbol
  _atom_site_fract_x
  _atom_site_fract_y
  _atom_site_fract_z
  _atom_site_U_iso_or_equiv
  _atom_site_thermal_displace_type
  _atom_site_occupancy
  _atom_site_symmetry_multiplicity
  _atom_site_Wyckoff_symbol
  _atom_site_calc_flag
Cu(1 CU 0.000000 0.000000 0.000000 0.022100 Uiso 1.000000 2 a d
Cl1 Cl 0.148470 0.000000 0.440300 0.022600 Uiso 1.000000 4 i d
N2 N 0.000000 0.296600 0.000000 0.020900 Uiso 1.000000 4 g d
C1 C 0.408500 0.100700 0.063600 0.023200 Uiso 1.000000 8 j d
H1 H 0.343800 0.166500 0.108600 0.028000 Uiso 1.000000 8 j c
```

```
loop_
  _atom_site_aniso_label
  _atom_site_aniso_U_11
  _atom_site_aniso_U_22
  _atom_site_aniso_U_33
  _atom_site_aniso_U_23
  _atom_site_aniso_U_13
  _atom_site_aniso_U_12
Cu(1 0.000000 0.000000 0.000000 0.000000 0.000000 0.000000
Cl1 0.018706 0.023168 0.025622 0.000000 0.000100 0.000000
N2 0.018006 0.017853 0.026022 0.000000 -0.000697 0.000000
C1 0.000000 0.000000 0.000000 0.000000 0.000000 0.000000
H1 0.000000 0.000000 0.000000 0.000000 0.000000 0.000000
```

```
_refine_ls_R_factor_all 0.89010300
```

```
data_ml139ref_p_01
```

```
_diffrn_source_target Cu
_diffrn_radiation_probe x-ray
_diffrn_radiation_wavelength 1.540598
_diffrn_radiation_type 'Cu K\alpha-1~'
```

```
loop_
  _pd_peak_id
  _pd_peak_2theta_centroid
  _pd_peak_d_spacing
  _pd_peak_pk_height
  _pd_peak_width_2theta
PK1 14.802 5.980 12284.6 0.0100
PK2 14.821 5.972 6663.1 0.0100
PK3 24.069 3.694 2626.0 0.0100
PK4 25.794 3.451 1651.4 0.0100
PK5 25.829 3.447 5874.3 0.0100
PK6 27.055 3.293 7626.1 0.0100
PK7 27.732 3.214 2350.8 0.0100
PK8 29.022 3.074 1622.1 0.0100
PK9 29.637 3.012 3993.9 0.0100
PK10 29.857 2.990 1540.2 0.0100
PK11 29.898 2.986 3157.5 0.0100
PK12 33.957 2.638 6837.3 0.0100
PK13 35.595 2.520 810.0 0.0100
```


1 3 0 PH00 o 6604.289 195006.234 0.00 100.00
PK21

_reflns_number_observed 21
_reflns_limit_h_min 0
_reflns_limit_h_max 5
_reflns_limit_k_min 0
_reflns_limit_k_max 3
_reflns_limit_l_min -1
_reflns_limit_l_max 1
_reflns_d_resolution_high 2.256
_reflns_d_resolution_low 5.980

_pd_meas_datetime_initiated '2011/01/16 01:04:35 PM'
_pd_instr_cons_illum_flag no
_pd_meas_2theta_range_min 3.99535563
_pd_meas_2theta_range_max 39.98435563
_pd_meas_2theta_range_inc 0.01700000
_pd_proc_2theta_range_min 3.99535563
_pd_proc_2theta_range_max 39.98435563
_pd_proc_2theta_range_inc 0.01700000

loop_
_pd_meas_intensity_total
_pd_proc_intensity_bgk_calc
_pd_calc_intensity_total
371.3341 0.0000 0.0000
404.0739 0.0000 0.0000
401.2695 0.0000 0.0000
381.8953 0.0000 0.0000
380.5197 0.0000 0.0000
409.6465 0.0000 0.0000
393.9980 0.0000 0.0000
447.4694 0.0000 0.0000
385.9593 0.0000 0.0000
382.2939 0.0000 0.0000
401.0826 0.0000 0.0000
385.2687 0.0000 0.0000
380.3711 0.0000 0.0000
427.1972 0.0000 0.0000
377.5611 0.0000 0.0000
378.9325 0.0000 0.0000
382.1399 0.0000 0.0000
378.3650 0.0000 0.0000
383.2421 0.0000 0.0000
385.4682 0.0000 0.0000
395.5773 0.0000 0.0000
381.7326 0.0000 0.0000
386.0061 0.0000 0.0000
380.1370 0.0000 0.0000
397.7949 0.0000 0.0000
355.0519 0.0000 0.0000
374.5123 0.0000 0.0000
400.4861 0.0000 0.0000
387.2841 0.0000 0.0000
382.6147 0.0000 0.0000
376.6493 0.0000 0.0000
398.8035 0.0000 0.0000
374.2621 0.0000 0.0000
375.7992 0.0000 0.0000
367.7281 0.0000 0.0000

369.6385	0.0000	0.0000
392.7905	0.0000	0.0000
389.2249	0.0000	0.0000
394.5934	0.0000	0.0000
385.9535	0.0000	0.0000
370.9504	0.0000	0.0000
386.6995	0.0000	0.0000
375.1308	0.0000	0.0000
340.8523	0.0000	0.0000
405.9930	0.0000	0.0000
382.2322	0.0000	0.0000
385.7320	0.0000	0.0000
350.4346	0.0000	0.0000
397.6078	0.0000	0.0000
378.2030	0.0000	0.0000
347.0163	0.0000	0.0000
383.7241	0.0000	0.0000
386.1289	0.0000	0.0000
400.7299	0.0000	0.0000
337.9845	0.0000	0.0000
382.8506	0.0000	0.0000
364.9871	0.0000	0.0000
338.1416	0.0000	0.0000
366.8970	0.0000	0.0000
338.5792	0.0000	0.0000
391.2523	0.0000	0.0000
359.7666	0.0000	0.0000
387.3295	0.0000	0.0000
352.0119	0.0000	0.0000
375.3839	0.0000	0.0000
355.7284	0.0000	0.0000
361.5301	0.0000	0.0000
340.7141	0.0000	0.0000
366.7618	0.0000	0.0000
367.9449	0.0000	0.0000
381.5285	0.0000	0.0000
331.3388	0.0000	0.0000
326.3222	0.0000	0.0000
378.1378	0.0000	0.0000
360.0566	0.0000	0.0000
365.0564	0.0000	0.0000
333.2679	0.0000	0.0000
339.8922	0.0000	0.0000
349.0722	0.0000	0.0000
369.9528	0.0000	0.0000
366.2372	0.0000	0.0000
345.1606	0.0000	0.0000
361.1993	0.0000	0.0000
328.6049	0.0000	0.0000
345.8156	0.0000	0.0000
364.2016	0.0000	0.0000
345.9729	0.0000	0.0000
365.9988	0.0000	0.0000
357.7521	0.0000	0.0000
333.2418	0.0000	0.0000
337.7272	0.0000	0.0000
346.4966	0.0000	0.0000
357.5014	0.0000	0.0000
340.5571	0.0000	0.0000
318.1939	0.0000	0.0000
354.4791	0.0000	0.0000

346.0844	0.0000	0.0000
336.3575	0.0000	0.0000
329.2556	0.0000	0.0000
343.6740	0.0000	0.0000
340.6641	0.0000	0.0000
341.2974	0.0000	0.0000
332.6956	0.0000	0.0000
340.4327	0.0000	0.0000
303.6104	0.0000	0.0000
363.7663	0.0000	0.0000
363.2654	0.0000	0.0000
330.5961	0.0000	0.0000
380.7600	0.0000	0.0000
336.0066	0.0000	0.0000
331.5837	0.0000	0.0000
381.6891	0.0000	0.0000
318.1420	0.0000	0.0000
331.6920	0.0000	0.0000
354.2144	0.0000	0.0000
316.2596	0.0000	0.0000
376.6842	0.0000	0.0000
305.6804	0.0000	0.0000
343.1295	0.0000	0.0000
348.6044	0.0000	0.0000
350.0184	0.0000	0.0000
362.6401	0.0000	0.0000
324.4069	0.0000	0.0000
352.5414	0.0000	0.0000
302.8697	0.0000	0.0000
339.3574	0.0000	0.0000
344.1985	0.0000	0.0000
331.7075	0.0000	0.0000
331.6471	0.0000	0.0000
302.4821	0.0000	0.0000
301.2816	0.0000	0.0000
346.5205	0.0000	0.0000
324.0410	0.0000	0.0000
323.4075	0.0000	0.0000
330.6463	0.0000	0.0000
304.3041	0.0000	0.0000
339.0558	0.0000	0.0000
299.4357	0.0000	0.0000
329.1929	0.0000	0.0000
338.5934	0.0000	0.0000
331.7987	0.0000	0.0000
339.8463	0.0000	0.0000
323.5680	0.0000	0.0000
316.5705	0.0000	0.0000
329.5334	0.0000	0.0000
315.5822	0.0000	0.0000
322.8405	0.0000	0.0000
323.9439	0.0000	0.0000
306.0015	0.0000	0.0000
328.2516	0.0000	0.0000
332.8752	0.0000	0.0000
320.8206	0.0000	0.0000
315.5811	0.0000	0.0000
346.0975	0.0000	0.0000
310.2889	0.0000	0.0000
335.3000	0.0000	0.0000
307.5382	0.0000	0.0000

324.1964	0.0000	0.0000
338.6755	0.0000	0.0000
305.5367	0.0000	0.0000
313.5258	0.0000	0.0000
314.9282	0.0000	0.0000
285.1761	0.0000	0.0000
330.7766	0.0000	0.0000
305.7768	0.0000	0.0000
305.0520	0.0000	0.0000
300.0026	0.0000	0.0000
356.0070	0.0000	0.0000
316.0585	0.0000	0.0000
339.8835	0.0000	0.0000
287.2768	0.0000	0.0000
287.6794	0.0000	0.0000
342.8699	0.0000	0.0000
288.5899	0.0000	0.0000
350.5801	0.0000	0.0000
298.2749	0.0000	0.0000
349.3465	0.0000	0.0000
290.4031	0.0000	0.0000
307.5894	0.0000	0.0000
331.1308	0.0000	0.0000
255.9320	0.0000	0.0000
309.0250	0.0000	0.0000
306.4831	0.0000	0.0000
330.3788	0.0000	0.0000
348.9707	0.0000	0.0000
305.8936	0.0000	0.0000
335.4973	0.0000	0.0000
329.1803	0.0000	0.0000
318.6642	0.0000	0.0000
324.1489	0.0000	0.0000
310.5163	0.0000	0.0000
305.8553	0.0000	0.0000
298.3883	0.0000	0.0000
293.3197	0.0000	0.0000
332.9568	0.0000	0.0000
329.7073	0.0000	0.0000
295.3132	0.0000	0.0000
316.7027	0.0000	0.0000
308.9241	0.0000	0.0000
301.9233	0.0000	0.0000
301.8867	0.0000	0.0000
313.1776	0.0000	0.0000
293.9567	0.0000	0.0000
307.2865	0.0000	0.0000
327.8654	0.0000	0.0000
321.8993	0.0000	0.0000
318.1773	0.0000	0.0000
320.7092	0.0000	0.0000
301.7636	0.0000	0.0000
328.1010	0.0000	0.0000
312.2039	0.0000	0.0000
280.8594	0.0000	0.0000
319.0339	0.0000	0.0000
292.0525	0.0000	0.0000
305.2459	0.0000	0.0000
305.6578	0.0000	0.0000
326.2683	0.0000	0.0000
312.7719	0.0000	0.0000

295.5499	0.0000	0.0000
304.7903	0.0000	0.0000
317.1927	0.0000	0.0000
324.4258	0.0000	0.0000
309.3013	0.0000	0.0000
298.2173	0.0000	0.0000
295.4121	0.0000	0.0000
299.1299	0.0000	0.0000
323.4070	0.0000	0.0000
297.9402	0.0000	0.0000
338.3891	0.0000	0.0000
269.7775	0.0000	0.0000
347.7598	0.0000	0.0000
279.9633	0.0000	0.0000
343.4320	0.0000	0.0000
252.2225	0.0000	0.0000
338.4721	0.0000	0.0000
280.8828	0.0000	0.0000
305.6213	0.0000	0.0000
286.6523	0.0000	0.0000
328.6060	0.0000	0.0000
300.8434	0.0000	0.0000
327.3326	0.0000	0.0000
343.5185	0.0000	0.0000
300.5646	0.0000	0.0000
260.6131	0.0000	0.0000
338.4165	0.0000	0.0000
312.0238	0.0000	0.0000
322.5833	0.0000	0.0000
295.6618	0.0000	0.0000
297.3085	0.0000	0.0000
303.1845	0.0000	0.0000
298.5067	0.0000	0.0000
287.2444	0.0000	0.0000
297.6230	0.0000	0.0000
317.2545	0.0000	0.0000
304.4515	0.0000	0.0000
327.1577	0.0000	0.0000
327.4510	0.0000	0.0000
306.1294	0.0000	0.0000
288.9673	0.0000	0.0000
306.5015	0.0000	0.0000
305.3834	0.0000	0.0000
317.0149	0.0000	0.0000
303.8928	0.0000	0.0000
305.1582	0.0000	0.0000
302.2179	0.0000	0.0000
304.8597	0.0000	0.0000
308.0802	0.0000	0.0000
325.9723	0.0000	0.0000
320.2865	0.0000	0.0000
329.0920	0.0000	0.0000
318.3528	0.0000	0.0000
312.8547	0.0000	0.0000
267.2920	0.0000	0.0000
283.8428	0.0000	0.0000
337.1159	0.0000	0.0000
328.9092	0.0000	0.0000
307.7199	0.0000	0.0000
298.3079	0.0000	0.0000
303.3484	0.0000	0.0000

303.3980	0.0000	0.0000
301.0124	0.0000	0.0000
281.0167	0.0000	0.0000
301.5963	0.0000	0.0000
311.9631	0.0000	0.0000
298.7361	0.0000	0.0000
289.0766	0.0000	0.0000
324.4796	0.0000	0.0000
294.2915	0.0000	0.0000
316.3051	0.0000	0.0000
308.5759	0.0000	0.0000
291.0881	0.0000	0.0000
312.5181	0.0000	0.0000
283.8022	0.0000	0.0000
257.7532	0.0000	0.0000
298.4950	0.0000	0.0000
299.9866	0.0000	0.0000
285.4689	0.0000	0.0000
335.0220	0.0000	0.0000
269.1630	0.0000	0.0000
302.8945	0.0000	0.0000
303.3346	0.0000	0.0000
289.0000	0.0000	0.0000
318.6205	0.0000	0.0000
315.7004	0.0000	0.0000
283.8583	0.0000	0.0000
309.8612	0.0000	0.0000
294.8804	0.0000	0.0000
282.4773	0.0000	0.0000
302.0004	0.0000	0.0000
322.9230	0.0000	0.0000
318.3013	0.0000	0.0000
301.1623	0.0000	0.0000
305.9228	0.0000	0.0000
287.5278	0.0000	0.0000
285.5173	0.0000	0.0000
293.9053	0.0000	0.0000
296.3924	0.0000	0.0000
312.5800	0.0000	0.0000
316.6430	0.0000	0.0000
320.0674	0.0000	0.0000
305.2742	0.0000	0.0000
292.2137	0.0000	0.0000
310.2144	0.0000	0.0000
274.2595	0.0000	0.0000
316.0366	0.0000	0.0000
323.6032	0.0000	0.0000
288.1305	0.0000	0.0000
299.1434	0.0000	0.0000
276.6403	0.0000	0.0000
295.9558	0.0000	0.0000
329.3262	0.0000	0.0000
302.2169	0.0000	0.0000
276.3465	0.0000	0.0000
283.6270	0.0000	0.0000
301.6868	0.0000	0.0000
280.3676	0.0000	0.0000
305.9056	0.0000	0.0000
284.2907	0.0000	0.0000
304.8435	0.0000	0.0000
283.4686	0.0000	0.0000

270.5623	0.0000	0.0000
313.8444	0.0000	0.0000
320.6424	0.0000	0.0000
317.9688	0.0000	0.0000
310.2818	0.0000	0.0000
286.5911	0.0000	0.0000
310.4519	0.0000	0.0000
291.5541	0.0000	0.0000
300.8966	0.0000	0.0000
268.6590	0.0000	0.0000
358.6902	0.0000	0.0000
298.2572	0.0000	0.0000
262.3894	0.0000	0.0000
304.9192	0.0000	0.0000
277.1951	0.0000	0.0000
294.7765	0.0000	0.0000
306.0895	0.0000	0.0000
298.4925	0.0000	0.0000
298.4859	0.0000	0.0000
310.6847	0.0000	0.0000
294.3987	0.0000	0.0000
299.8726	0.0000	0.0000
309.2331	0.0000	0.0000
299.1382	0.0000	0.0000
283.6511	0.0000	0.0000
283.0374	0.0000	0.0000
326.4785	0.0000	0.0000
294.6461	0.0000	0.0000
281.7421	0.0000	0.0000
312.0012	0.0000	0.0000
281.7106	0.0000	0.0000
265.1027	0.0000	0.0000
295.3892	0.0000	0.0000
302.2871	0.0000	0.0000
299.4649	0.0000	0.0000
300.8333	0.0000	0.0000
315.7242	0.0000	0.0000
316.1868	0.0000	0.0000
307.0790	0.0000	0.0000
301.0399	0.0000	0.0000
307.5753	0.0000	0.0000
309.3370	0.0000	0.0000
317.7901	0.0000	0.0000
314.0358	0.0000	0.0000
288.2333	0.0000	0.0000
295.0578	0.0000	0.0000
306.3618	0.0000	0.0000
291.3008	0.0000	0.0000
311.9269	0.0000	0.0000
309.1220	0.0000	0.0000
277.6423	0.0000	0.0000
269.4813	0.0000	0.0000
309.7824	0.0000	0.0000
311.2016	0.0000	0.0000
270.9302	0.0000	0.0000
320.3302	0.0000	0.0000
318.6252	0.0000	0.0000
303.4610	0.0000	0.0000
286.2735	0.0000	0.0000
309.1574	0.0000	0.0000
284.0609	0.0000	0.0000

257.7689	0.0000	0.0000
305.6590	0.0000	0.0000
281.4921	0.0000	0.0000
253.8654	0.0000	0.0000
367.9724	0.0000	0.0000
253.7692	0.0000	0.0000
275.0708	0.0000	0.0000
291.5987	0.0000	0.0000
255.3190	0.0000	0.0000
308.8864	0.0000	0.0000
293.7014	0.0000	0.0000
319.8398	0.0000	0.0000
309.9636	0.0000	0.0000
291.9355	0.0000	0.0000
279.0669	0.0000	0.0000
273.0930	0.0000	0.0000
337.4873	0.0000	0.0000
315.2858	0.0000	0.0000
292.0103	0.0000	0.0000
306.0308	0.0000	0.0000
296.2835	0.0000	0.0000
266.3501	0.0000	0.0000
286.3545	0.0000	0.0000
310.6591	0.0000	0.0000
311.5798	0.0000	0.0000
291.3021	0.0000	0.0000
287.1590	0.0000	0.0000
271.5721	0.0000	0.0000
289.6689	0.0000	0.0000
297.8602	0.0000	0.0000
312.5865	0.0000	0.0000
328.2732	0.0000	0.0000
305.5679	0.0000	0.0000
289.1124	0.0000	0.0000
295.5855	0.0000	0.0000
306.1414	0.0000	0.0000
293.6982	0.0000	0.0000
286.9018	0.0000	0.0000
292.0302	0.0000	0.0000
303.9292	0.0000	0.0000
287.0243	0.0000	0.0000
305.5492	0.0000	0.0000
295.5666	0.0000	0.0000
281.5390	0.0000	0.0000
303.1363	0.0000	0.0000
306.7667	0.0000	0.0000
290.0338	0.0000	0.0000
301.8358	0.0000	0.0000
275.7424	0.0000	0.0000
291.4277	0.0000	0.0000
328.3680	0.0000	0.0000
335.4483	0.0000	0.0000
286.1809	0.0000	0.0000
257.3838	0.0000	0.0000
314.8130	0.0000	0.0000
314.7954	0.0000	0.0000
284.0336	0.0000	0.0000
348.3993	0.0000	0.0000
293.3215	0.0000	0.0000
266.9722	0.0000	0.0000
279.6103	0.0000	0.0000

343.1674	0.0000	0.0000
302.2383	0.0000	0.0000
288.9040	0.0000	0.0000
292.2010	0.0000	0.0000
329.7459	0.0000	0.0000
292.5008	0.0000	0.0000
294.8963	0.0000	0.0000
296.8864	0.0000	0.0000
306.6918	0.0000	0.0000
262.0111	0.0000	0.0000
318.6418	0.0000	0.0000
343.3462	0.0000	0.0000
307.7373	0.0000	0.0000
316.7131	0.0000	0.0000
301.8685	0.0000	0.0000
285.3143	0.0000	0.0000
328.5255	0.0000	0.0000
320.4604	0.0000	0.0000
293.5400	0.0000	0.0000
299.5926	0.0000	0.0000
272.1476	0.0000	0.0000
285.3196	0.0000	0.0000
312.2559	0.0000	0.0000
330.6950	0.0000	0.0000
290.7651	0.0000	0.0000
284.0525	0.0000	0.0000
290.2204	0.0000	0.0000
302.9440	0.0000	0.0000
306.0306	0.0000	0.0000
292.6140	0.0000	0.0000
277.1202	0.0000	0.0000
282.4887	0.0000	0.0000
306.6467	0.0000	0.0000
309.6817	0.0000	0.0000
289.8278	0.0000	0.0000
281.8879	0.0000	0.0000
286.3078	0.0000	0.0000
301.5710	0.0000	0.0000
290.0310	0.0000	0.0000
288.9888	0.0000	0.0000
344.5317	0.0000	0.0000
324.7838	0.0000	0.0000
273.9938	0.0000	0.0000
293.3161	0.0000	0.0000
327.5150	0.0000	0.0000
342.9179	0.0000	0.0000
294.1025	0.0000	0.0000
326.4092	0.0000	0.0000
316.4167	0.0000	0.0000
315.4363	0.0000	0.0000
286.1833	0.0000	0.0000
292.0325	0.0000	0.0000
346.3894	0.0000	0.0000
329.6236	0.0000	0.0000
309.8967	0.0000	0.0000
316.0505	0.0000	0.0000
306.9657	0.0000	0.0000
324.2320	0.0000	0.0000
298.3497	0.0000	0.0000
252.8785	0.0000	0.0000
317.2727	0.0000	0.0000

308.2816	0.0000	0.0000
308.0699	0.0000	0.0000
340.9338	0.0000	0.0000
297.1495	0.0000	0.0000
297.8569	0.0000	0.0000
302.0561	0.0000	0.0000
328.7490	0.0000	0.0000
310.2350	0.0000	0.0000
326.1255	0.0000	0.0000
303.8875	0.0000	0.0000
284.0046	0.0000	0.0000
301.4287	0.0000	0.0000
353.8582	0.0000	0.0000
314.9177	0.0000	0.0000
272.3186	0.0000	0.0000
284.5164	0.0000	0.0000
335.2555	0.0000	0.0000
351.6270	0.0000	0.0000
335.3138	0.0000	0.0000
307.8568	0.0000	0.0000
315.4333	0.0000	0.0000
322.5010	0.0000	0.0000
287.7291	0.0000	0.0000
291.4791	0.0000	0.0000
313.8716	0.0000	0.0000
314.6634	0.0000	0.0000
286.6758	0.0000	0.0000
291.7382	0.0000	0.0000
335.0805	0.0000	0.0000
354.1220	0.0000	0.0000
344.0899	0.0000	0.0000
332.1180	0.0000	0.0000
331.5719	0.0000	0.0000
314.9323	0.0000	0.0000
292.7369	0.0000	0.0000
321.1820	0.0000	0.0000
333.2052	0.0000	0.0000
303.2502	0.0000	0.0000
295.8192	0.0000	0.0000
323.1663	0.0000	0.0000
313.1397	0.0000	0.0000
330.0943	0.0000	0.0000
369.8756	0.0000	0.0000
355.8188	0.0000	0.0000
318.1961	0.0000	0.0000
378.9052	0.0000	0.0000
373.0418	0.0000	0.0000
345.2737	0.0000	0.0000
361.1877	0.0000	0.0000
348.4486	0.0000	0.0000
356.7422	0.0000	0.0000
348.6251	0.0000	0.0000
340.3374	0.0000	0.0000
346.9130	0.0000	0.0000
379.2851	0.0000	0.0000
383.9609	0.0000	0.0000
369.0198	0.0000	0.0000
307.9052	0.0000	0.0000
332.5708	0.0000	0.0000
408.6651	0.0000	0.0000
402.5145	0.0000	0.0000

372.9259	0.0000	0.0000
331.1027	0.0000	0.0000
377.1310	0.0000	0.0000
389.4914	0.0000	0.0000
375.1932	0.0000	0.0000
390.0000	0.0000	0.0000
419.6948	0.0000	0.0000
425.9347	0.0000	0.0000
440.0972	0.0000	0.0000
398.8998	0.0000	0.0000
460.3080	0.0000	0.0000
509.2267	0.0000	0.0000
476.4597	0.0000	0.0000
467.6397	0.0000	0.0000
505.4306	0.0000	0.0000
554.5826	0.0000	0.0000
556.5926	0.0000	0.0000
551.9327	0.0000	0.0000
561.9425	0.0000	0.0000
609.1054	0.0000	0.0000
641.3792	0.0000	0.0000
658.9068	0.0000	0.0000
665.4509	0.0000	0.0000
681.4189	0.0000	0.0000
750.3165	0.0000	0.0000
775.1691	0.0000	0.0000
813.9335	0.0000	0.0000
896.9946	0.0000	0.0000
946.0566	0.0000	0.0000
945.3310	0.0000	0.0000
995.7473	0.0000	0.0000
1087.0463	0.0000	0.0000
1142.2396	0.0000	0.0000
1162.6858	0.0000	0.0000
1302.8335	0.0000	0.0000
1416.6160	0.0000	0.0000
1409.5651	0.0000	0.0000
1425.8129	0.0000	0.0000
1522.1832	0.0000	0.0000
1633.6753	0.0000	0.0000
1733.5668	0.0000	0.0000
1888.3584	0.0000	0.0000
1920.9230	0.0000	0.0000
1879.8430	0.0000	0.0000
1846.6350	0.0000	0.0000
2085.8013	0.0000	0.0000
2376.3909	0.0000	0.0000
2218.2988	0.0000	0.0000
2297.7363	0.0000	0.0000
2307.5203	0.0000	28.1916
2362.7290	0.0000	95.3137
2352.0901	0.0000	519.2641
2401.4419	0.0000	2141.8984
2281.0454	0.0000	3360.0894
2262.4182	0.0000	165.3837
2170.0393	0.0000	39.6948
2117.2395	0.0000	0.0000
2039.7495	0.0000	0.0000
1964.7726	0.0000	0.0000
1761.1720	0.0000	0.0000
1711.2222	0.0000	0.0000

1678.0779	0.0000	0.0000
1431.7527	0.0000	0.0000
1243.0825	0.0000	0.0000
1340.0729	0.0000	0.0000
1187.6934	0.0000	0.0000
1058.4554	0.0000	0.0000
995.2464	0.0000	0.0000
1007.1523	0.0000	0.0000
924.9827	0.0000	0.0000
794.5836	0.0000	0.0000
766.8314	0.0000	0.0000
720.0618	0.0000	0.0000
702.7173	0.0000	0.0000
664.5226	0.0000	0.0000
640.5647	0.0000	0.0000
591.9562	0.0000	0.0000
530.4736	0.0000	0.0000
514.0118	0.0000	0.0000
538.1362	0.0000	0.0000
509.4435	0.0000	0.0000
487.6301	0.0000	0.0000
501.2208	0.0000	0.0000
474.4704	0.0000	0.0000
469.2147	0.0000	0.0000
462.1441	0.0000	0.0000
460.1748	0.0000	0.0000
410.7476	0.0000	0.0000
400.8222	0.0000	0.0000
441.2909	0.0000	0.0000
454.3633	0.0000	0.0000
406.5546	0.0000	0.0000
399.1936	0.0000	0.0000
401.7261	0.0000	0.0000
388.7558	0.0000	0.0000
373.0257	0.0000	0.0000
392.0179	0.0000	0.0000
407.2697	0.0000	0.0000
366.3800	0.0000	0.0000
364.8882	0.0000	0.0000
333.9044	0.0000	0.0000
356.5256	0.0000	0.0000
377.1594	0.0000	0.0000
358.9030	0.0000	0.0000
361.0764	0.0000	0.0000
330.0681	0.0000	0.0000
349.4477	0.0000	0.0000
342.8339	0.0000	0.0000
384.6656	0.0000	0.0000
336.3398	0.0000	0.0000
321.7548	0.0000	0.0000
336.6435	0.0000	0.0000
357.7136	0.0000	0.0000
335.2780	0.0000	0.0000
297.9682	0.0000	0.0000
304.0340	0.0000	0.0000
351.3560	0.0000	0.0000
318.8263	0.0000	0.0000
307.5180	0.0000	0.0000
321.7304	0.0000	0.0000
327.1945	0.0000	0.0000
332.2238	0.0000	0.0000

347.0398	0.0000	0.0000
330.1092	0.0000	0.0000
321.3839	0.0000	0.0000
262.5918	0.0000	0.0000
297.9976	0.0000	0.0000
339.4322	0.0000	0.0000
367.2495	0.0000	0.0000
357.9698	0.0000	0.0000
340.1223	0.0000	0.0000
347.2151	0.0000	0.0000
307.1976	0.0000	0.0000
311.2958	0.0000	0.0000
323.8286	0.0000	0.0000
339.2718	0.0000	0.0000
339.0615	0.0000	0.0000
322.1591	0.0000	0.0000
303.7531	0.0000	0.0000
280.7251	0.0000	0.0000
303.2932	0.0000	0.0000
294.3808	0.0000	0.0000
293.3245	0.0000	0.0000
326.1147	0.0000	0.0000
319.6440	0.0000	0.0000
295.2703	0.0000	0.0000
310.3608	0.0000	0.0000
330.3702	0.0000	0.0000
298.5233	0.0000	0.0000
292.0121	0.0000	0.0000
296.2267	0.0000	0.0000
302.1225	0.0000	0.0000
321.7510	0.0000	0.0000
358.8821	0.0000	0.0000
322.3973	0.0000	0.0000
292.4809	0.0000	0.0000
276.2369	0.0000	0.0000
292.4714	0.0000	0.0000
306.2965	0.0000	0.0000
309.9180	0.0000	0.0000
277.6363	0.0000	0.0000
313.7310	0.0000	0.0000
283.8319	0.0000	0.0000
263.8463	0.0000	0.0000
280.2546	0.0000	0.0000
327.7137	0.0000	0.0000
317.5524	0.0000	0.0000
246.8011	0.0000	0.0000
278.9973	0.0000	0.0000
335.9431	0.0000	0.0000
291.1249	0.0000	0.0000
294.6199	0.0000	0.0000
269.4064	0.0000	0.0000
324.5176	0.0000	0.0000
286.5422	0.0000	0.0000
243.2564	0.0000	0.0000
266.0919	0.0000	0.0000
313.6076	0.0000	0.0000
314.3426	0.0000	0.0000
294.8226	0.0000	0.0000
281.3830	0.0000	0.0000
267.5420	0.0000	0.0000
278.0283	0.0000	0.0000

317.5874	0.0000	0.0000
299.2613	0.0000	0.0000
276.2001	0.0000	0.0000
264.1954	0.0000	0.0000
287.7342	0.0000	0.0000
316.5000	0.0000	0.0000
310.3678	0.0000	0.0000
279.6516	0.0000	0.0000
277.9522	0.0000	0.0000
296.6261	0.0000	0.0000
300.0294	0.0000	0.0000
290.6277	0.0000	0.0000
282.9724	0.0000	0.0000
295.5259	0.0000	0.0000
304.2529	0.0000	0.0000
308.5545	0.0000	0.0000
307.2391	0.0000	0.0000
289.9414	0.0000	0.0000
271.4477	0.0000	0.0000
295.3043	0.0000	0.0000
311.5342	0.0000	0.0000
283.2257	0.0000	0.0000
270.4995	0.0000	0.0000
283.4039	0.0000	0.0000
282.4980	0.0000	0.0000
287.2661	0.0000	0.0000
287.4275	0.0000	0.0000
287.5518	0.0000	0.0000
285.9386	0.0000	0.0000
268.3310	0.0000	0.0000
288.3253	0.0000	0.0000
251.2691	0.0000	0.0000
316.2646	0.0000	0.0000
319.6168	0.0000	0.0000
310.8068	0.0000	0.0000
291.4184	0.0000	0.0000
289.7882	0.0000	0.0000
270.0277	0.0000	0.0000
275.7379	0.0000	0.0000
300.7459	0.0000	0.0000
319.4877	0.0000	0.0000
313.5486	0.0000	0.0000
299.4494	0.0000	0.0000
256.9845	0.0000	0.0000
271.1693	0.0000	0.0000
271.0037	0.0000	0.0000
256.2869	0.0000	0.0000
275.7520	0.0000	0.0000
277.8215	0.0000	0.0000
284.5423	0.0000	0.0000
298.9309	0.0000	0.0000
261.2826	0.0000	0.0000
317.4665	0.0000	0.0000
259.7650	0.0000	0.0000
275.8246	0.0000	0.0000
279.1053	0.0000	0.0000
270.1655	0.0000	0.0000
276.5201	0.0000	0.0000
249.7424	0.0000	0.0000
281.0839	0.0000	0.0000
279.4417	0.0000	0.0000

258.5432	0.0000	0.0000
266.7685	0.0000	0.0000
312.3824	0.0000	0.0000
308.5641	0.0000	0.0000
284.2499	0.0000	0.0000
255.9969	0.0000	0.0000
243.9425	0.0000	0.0000
252.5763	0.0000	0.0000
302.1284	0.0000	0.0000
310.1418	0.0000	0.0000
306.0918	0.0000	0.0000
276.2040	0.0000	0.0000
240.4309	0.0000	0.0000
242.8305	0.0000	0.0000
257.4587	0.0000	0.0000
274.7014	0.0000	0.0000
293.9882	0.0000	0.0000
289.4545	0.0000	0.0000
307.1166	0.0000	0.0000
299.4130	0.0000	0.0000
273.3717	0.0000	0.0000
249.5986	0.0000	0.0000
243.5116	0.0000	0.0000
300.1707	0.0000	0.0000
289.7185	0.0000	0.0000
259.1139	0.0000	0.0000
242.7559	0.0000	0.0000
271.2457	0.0000	0.0000
309.7019	0.0000	0.0000
258.9998	0.0000	0.0000
246.9555	0.0000	0.0000
249.0691	0.0000	0.0000
253.2446	0.0000	0.0000
310.6076	0.0000	0.0000
256.5310	0.0000	0.0000
264.1162	0.0000	0.0000
251.8706	0.0000	0.0000
306.0710	0.0000	0.0000
283.7044	0.0000	0.0000
286.6789	0.0000	0.0000
267.0654	0.0000	0.0000
314.4130	0.0000	0.0000
262.3984	0.0000	0.0000
266.7061	0.0000	0.0000
243.3943	0.0000	0.0000
276.5847	0.0000	0.0000
237.3111	0.0000	0.0000
286.6095	0.0000	0.0000
288.3136	0.0000	0.0000
289.9076	0.0000	0.0000
294.1572	0.0000	0.0000
290.8676	0.0000	0.0000
312.0868	0.0000	0.0000
287.9160	0.0000	0.0000
251.0082	0.0000	0.0000
260.7408	0.0000	0.0000
275.2030	0.0000	0.0000
304.7793	0.0000	0.0000
298.3454	0.0000	0.0000
263.1542	0.0000	0.0000
245.6138	0.0000	0.0000

238.6923	0.0000	0.0000
283.9337	0.0000	0.0000
294.2513	0.0000	0.0000
279.5957	0.0000	0.0000
259.0359	0.0000	0.0000
263.1447	0.0000	0.0000
272.3140	0.0000	0.0000
272.2220	0.0000	0.0000
260.0505	0.0000	0.0000
244.3741	0.0000	0.0000
265.1037	0.0000	0.0000
286.7685	0.0000	0.0000
290.0899	0.0000	0.0000
275.4033	0.0000	0.0000
261.7021	0.0000	0.0000
260.6719	0.0000	0.0000
260.3509	0.0000	0.0000
299.4875	0.0000	0.0000
297.8587	0.0000	0.0000
282.4289	0.0000	0.0000
229.4585	0.0000	0.0000
256.2418	0.0000	0.0000
281.5596	0.0000	0.0000
276.3383	0.0000	0.0000
278.6608	0.0000	0.0000
233.7079	0.0000	0.0000
242.0567	0.0000	0.0000
239.3708	0.0000	0.0000
267.1128	0.0000	0.0000
274.8792	0.0000	0.0000
234.8555	0.0000	0.0000
264.7021	0.0000	0.0000
279.9727	0.0000	0.0000
315.0027	0.0000	0.0000
268.1555	0.0000	0.0000
272.1278	0.0000	0.0000
256.1804	0.0000	0.0000
279.0595	0.0000	0.0000
248.2327	0.0000	0.0000
271.7564	0.0000	0.0000
301.8354	0.0000	0.0000
255.0886	0.0000	0.0000
258.7105	0.0000	0.0000
292.2151	0.0000	0.0000
292.9857	0.0000	0.0000
272.8728	0.0000	0.0000
273.9271	0.0000	0.0000
294.2256	0.0000	0.0000
299.0186	0.0000	0.0000
277.4946	0.0000	0.0000
246.8847	0.0000	0.0000
280.7608	0.0000	0.0000
280.7618	0.0000	0.0000
280.2024	0.0000	0.0000
279.6662	0.0000	0.0000
285.9153	0.0000	0.0000
255.1669	0.0000	0.0000
267.6544	0.0000	0.0000
265.2674	0.0000	0.0000
276.4026	0.0000	0.0000
261.9213	0.0000	0.0000

266.3120	0.0000	0.0000
252.8047	0.0000	0.0000
257.1613	0.0000	0.0000
268.5853	0.0000	0.0000
285.1992	0.0000	0.0000
274.1758	0.0000	0.0000
267.3221	0.0000	0.0000
275.5707	0.0000	0.0000
267.4666	0.0000	0.0000
265.4625	0.0000	0.0000
275.5624	0.0000	0.0000
269.9742	0.0000	0.0000
268.8157	0.0000	0.0000
274.6655	0.0000	0.0000
273.1548	0.0000	0.0000
285.1098	0.0000	0.0000
279.6609	0.0000	0.0000
282.1104	0.0000	0.0000
247.7384	0.0000	0.0000
273.3426	0.0000	0.0000
276.7587	0.0000	0.0000
263.1468	0.0000	0.0000
247.7392	0.0000	0.0000
239.6958	0.0000	0.0000
234.6647	0.0000	0.0000
271.4928	0.0000	0.0000
261.5074	0.0000	0.0000
262.6223	0.0000	0.0000
292.8721	0.0000	0.0000
263.9414	0.0000	0.0000
275.9182	0.0000	0.0000
234.1111	0.0000	0.0000
280.5091	0.0000	0.0000
241.2499	0.0000	0.0000
253.1982	0.0000	0.0000
287.9578	0.0000	0.0000
280.9294	0.0000	0.0000
260.2660	0.0000	0.0000
245.8933	0.0000	0.0000
241.9166	0.0000	0.0000
265.9486	0.0000	0.0000
284.3006	0.0000	0.0000
278.9497	0.0000	0.0000
287.8492	0.0000	0.0000
267.9098	0.0000	0.0000
305.1582	0.0000	0.0000
282.9166	0.0000	0.0000
256.7734	0.0000	0.0000
218.1573	0.0000	0.0000
233.6878	0.0000	0.0000
314.9763	0.0000	0.0000
300.0582	0.0000	0.0000
263.2433	0.0000	0.0000
241.1553	0.0000	0.0000
260.7386	0.0000	0.0000
253.1971	0.0000	0.0000
277.8499	0.0000	0.0000
269.0986	0.0000	0.0000
258.8751	0.0000	0.0000
262.7820	0.0000	0.0000
268.5599	0.0000	0.0000

284.4448	0.0000	0.0000
298.1585	0.0000	0.0000
286.7849	0.0000	0.0000
255.8305	0.0000	0.0000
246.8187	0.0000	0.0000
242.9101	0.0000	0.0000
246.8445	0.0000	0.0000
267.9045	0.0000	0.0000
299.7046	0.0000	0.0000
283.2762	0.0000	0.0000
268.5288	0.0000	0.0000
257.5788	0.0000	0.0000
270.9481	0.0000	0.0000
270.4547	0.0000	0.0000
260.0592	0.0000	0.0000
272.0012	0.0000	0.0000
270.1754	0.0000	0.0000
266.8555	0.0000	0.0000
274.6131	0.0000	0.0000
258.1838	0.0000	0.0000
283.9284	0.0000	0.0000
306.8056	0.0000	0.0000
253.2173	0.0000	0.0000
267.3091	0.0000	0.0000
279.6435	0.0000	0.0000
264.8286	0.0000	0.0000
277.4626	0.0000	0.0000
254.9453	0.0000	0.0000
290.8660	0.0000	0.0000
245.2502	0.0000	0.0000
238.8214	0.0000	0.0000
242.4746	0.0000	0.0000
225.1841	0.0000	0.0000
241.9214	0.0000	0.0000
282.6632	0.0000	0.0000
279.7307	0.0000	0.0000
321.6088	0.0000	0.0000
273.6589	0.0000	0.0000
236.7371	0.0000	0.0000
261.0110	0.0000	0.0000
241.4489	0.0000	0.0000
277.7366	0.0000	0.0000
249.6680	0.0000	0.0000
279.0829	0.0000	0.0000
280.1804	0.0000	0.0000
278.6815	0.0000	0.0000
264.1595	0.0000	0.0000
260.4242	0.0000	0.0000
257.0462	0.0000	0.0000
260.7261	0.0000	0.0000
253.6788	0.0000	0.0000
259.5457	0.0000	0.0000
278.9155	0.0000	0.0000
294.5040	0.0000	0.0000
276.3436	0.0000	0.0000
268.2804	0.0000	0.0000
277.3646	0.0000	0.0000
286.4839	0.0000	0.0000
276.5606	0.0000	0.0000
261.5383	0.0000	0.0000
258.9757	0.0000	0.0000

271.8008	0.0000	0.0000
266.3896	0.0000	0.0000
226.9847	0.0000	0.0000
225.1144	0.0000	0.0000
249.0719	0.0000	0.0000
291.3515	0.0000	0.0000
295.9755	0.0000	0.0000
287.5988	0.0000	0.0000
292.2091	0.0000	0.0000
256.5067	0.0000	0.0000
243.4025	0.0000	0.0000
244.6708	0.0000	0.0000
280.6281	0.0000	0.0000
288.3510	0.0000	0.0000
286.2043	0.0000	0.0000
259.6796	0.0000	0.0000
239.4749	0.0000	0.0000
270.3277	0.0000	0.0000
282.2119	0.0000	0.0000
270.1414	0.0000	0.0000
312.2035	0.0000	0.0000
277.6042	0.0000	0.0000
245.5197	0.0000	0.0000
263.4746	0.0000	0.0000
236.0436	0.0000	0.0000
271.9611	0.0000	0.0000
277.5861	0.0000	0.0000
253.8389	0.0000	0.0000
232.7518	0.0000	0.0000
242.7644	0.0000	0.0000
257.5174	0.0000	0.0000
278.5402	0.0000	0.0000
301.1960	0.0000	0.0000
284.3838	0.0000	0.0000
239.5821	0.0000	0.0000
248.8144	0.0000	0.0000
248.6804	0.0000	0.0000
298.0335	0.0000	0.0000
268.8154	0.0000	0.0000
280.4510	0.0000	0.0000
282.3739	0.0000	0.0000
279.3393	0.0000	0.0000
246.6056	0.0000	0.0000
268.2601	0.0000	0.0000
277.9018	0.0000	0.0000
251.9233	0.0000	0.0000
267.0369	0.0000	0.0000
272.3076	0.0000	0.0000
271.2814	0.0000	0.0000
289.9716	0.0000	0.0000
273.8049	0.0000	0.0000
260.7418	0.0000	0.0000
262.1326	0.0000	0.0000
269.2507	0.0000	0.0000
274.5275	0.0000	0.0000
251.9041	0.0000	0.0000
240.5120	0.0000	0.0000
269.2555	0.0000	0.0000
283.5070	0.0000	0.0000
271.3979	0.0000	0.0000
276.6080	0.0000	0.0000

270.0495	0.0000	0.0000
290.9408	0.0000	0.0000
262.5230	0.0000	0.0000
252.1586	0.0000	0.0000
253.0839	0.0000	0.0000
278.8242	0.0000	0.0000
276.4784	0.0000	0.0000
280.9036	0.0000	0.0000
313.4048	0.0000	0.0000
274.0388	0.0000	0.0000
291.1307	0.0000	0.0000
291.7030	0.0000	0.0000
305.9038	0.0000	0.0000
282.5991	0.0000	0.0000
251.0672	0.0000	0.0000
278.6891	0.0000	0.0000
303.0088	0.0000	0.0000
308.7613	0.0000	0.0000
305.0542	0.0000	0.0000
290.8658	0.0000	0.0000
271.4748	0.0000	0.0000
264.3052	0.0000	0.0000
297.1396	0.0000	0.0000
312.6186	0.0000	0.0000
290.7119	0.0000	0.0000
315.8745	0.0000	0.0000
278.0458	0.0000	0.0000
283.1646	0.0000	0.0000
297.4788	0.0000	0.0000
279.7817	0.0000	0.0000
314.2217	0.0000	0.0000
309.0978	0.0000	0.0000
304.0131	0.0000	0.0000
330.2979	0.0000	0.0000
327.5281	0.0000	0.0000
308.0809	0.0000	0.0000
362.3336	0.0000	0.0000
336.3259	0.0000	0.0000
348.0623	0.0000	0.0000
353.8635	0.0000	0.0000
351.4812	0.0000	0.0000
397.8581	0.0000	0.0000
402.2765	0.0000	0.0000
439.1381	0.0000	0.0000
474.7570	0.0000	0.0000
483.3371	0.0000	5.2822
486.3223	0.0000	12.5820
445.3687	0.0000	60.3373
437.6690	0.0000	679.1030
457.0489	0.0000	27.4933
483.1476	0.0000	8.5119
484.3713	0.0000	0.0000
484.9190	0.0000	0.0000
505.6970	0.0000	0.0000
485.2457	0.0000	0.0000
460.6285	0.0000	0.0000
452.6671	0.0000	0.0000
465.3684	0.0000	0.0000
446.8125	0.0000	0.0000
438.0100	0.0000	0.0000
411.9138	0.0000	0.0000

396.2476	0.0000	0.0000
373.6248	0.0000	0.0000
338.8794	0.0000	0.0000
351.9493	0.0000	0.0000
359.4789	0.0000	0.0000
318.5893	0.0000	0.0000
360.0211	0.0000	0.0000
317.7252	0.0000	0.0000
299.1905	0.0000	0.0000
347.7633	0.0000	0.0000
324.9686	0.0000	0.0000
352.8398	0.0000	0.0000
311.9586	0.0000	0.0000
309.8315	0.0000	0.0000
281.7484	0.0000	0.0000
302.1084	0.0000	0.0000
289.8476	0.0000	0.0000
324.8089	0.0000	0.0000
315.9679	0.0000	0.0000
274.0850	0.0000	0.0000
279.1236	0.0000	0.0000
250.6795	0.0000	0.0000
303.2288	0.0000	0.0000
269.0449	0.0000	0.0000
295.0639	0.0000	0.0000
303.9058	0.0000	0.0000
291.2650	0.0000	0.0000
314.4481	0.0000	0.0000
269.1370	0.0000	0.0000
285.9638	0.0000	0.0000
268.4776	0.0000	0.0000
302.9233	0.0000	0.0000
323.6378	0.0000	0.0000
277.9382	0.0000	0.0000
276.4217	0.0000	0.0000
270.0305	0.0000	0.0000
298.8526	0.0000	0.0000
286.9956	0.0000	0.0000
323.9937	0.0000	0.0000
291.3894	0.0000	0.0000
268.3229	0.0000	0.0000
281.1615	0.0000	0.0000
293.7866	0.0000	0.0000
304.9586	0.0000	0.0000
297.8716	0.0000	0.0000
304.2844	0.0000	0.0000
312.7549	0.0000	0.0000
304.7310	0.0000	0.0000
302.7655	0.0000	0.0000
293.4007	0.0000	0.0000
282.9665	0.0000	0.0000
293.7704	0.0000	0.0000
279.5148	0.0000	0.0000
280.8113	0.0000	0.0000
326.4417	0.0000	0.0000
341.3614	0.0000	0.0000
314.5349	0.0000	0.0000
333.9595	0.0000	0.0000
331.1951	0.0000	0.0000
329.6231	0.0000	0.0000
306.7505	0.0000	0.0000

319.0422	0.0000	0.0000
320.1806	0.0000	0.0000
345.0959	0.0000	0.0000
369.4280	0.0000	0.0000
364.5359	0.0000	0.0000
355.8052	0.0000	0.0000
333.4989	0.0000	0.0000
310.2270	0.0000	0.0000
322.5355	0.0000	0.0000
361.1921	0.0000	0.0000
397.9450	0.0000	0.0000
382.7328	0.0000	0.0000
403.0375	0.0000	0.0000
402.5157	0.0000	0.0000
416.1433	0.0000	0.0000
463.4955	0.0000	0.0000
412.9134	0.0000	0.0000
442.1910	0.0000	0.0000
536.1905	0.0000	0.0000
512.6124	0.0000	0.0000
522.1182	0.0000	0.0000
563.1278	0.0000	0.0000
561.3128	0.0000	0.0000
596.0474	0.0000	0.0000
633.8013	0.0000	0.0000
564.8966	0.0000	0.0564
676.7627	0.0000	0.1716
718.2313	0.0000	20.7000
693.8969	0.0000	51.7521
757.6479	0.0000	943.1932
728.7254	0.0000	204.7335
801.8073	0.0000	32.8415
828.0836	0.0000	13.0996
833.8438	0.0000	0.0000
821.8915	0.0000	0.0000
781.8409	0.0000	0.0000
820.5743	0.0000	0.0000
771.0999	0.0000	0.0000
693.8088	0.0000	0.0000
717.8054	0.0000	0.0000
755.0713	0.0000	0.0000
738.9655	0.0000	0.0000
717.5476	0.0000	0.0000
644.4619	0.0000	0.0000
587.3696	0.0000	0.0000
554.9073	0.0000	0.0000
557.5003	0.0000	0.0000
549.0495	0.0000	0.0000
526.9346	0.0000	0.0000
527.4503	0.0000	0.0000
466.1609	0.0000	0.0000
422.5531	0.0000	0.0000
438.9570	0.0000	0.0000
439.8490	0.0000	0.0000
450.0185	0.0000	0.0000
430.4445	0.0000	0.0000
389.3963	0.0000	0.0000
359.4889	0.0000	0.0000
357.7897	0.0000	0.0000
373.5110	0.0000	0.0000
387.3189	0.0000	0.0000

417.2672	0.0000	0.0000
402.0151	0.0000	0.0000
330.8698	0.0000	0.0000
354.8159	0.0000	0.0000
316.6034	0.0000	0.0000
338.4400	0.0000	0.0000
389.5082	0.0000	0.0000
404.6018	0.0000	0.0000
405.3172	0.0000	0.0000
400.4647	0.0000	0.0000
445.5425	0.0000	0.0000
349.7249	0.0000	0.0000
350.4729	0.0000	0.0000
382.0153	0.0000	0.0000
359.1641	0.0000	0.0000
430.5235	0.0000	0.0000
453.9164	0.0000	0.0000
391.5668	0.0000	0.0000
419.5220	0.0000	0.0000
349.0512	0.0000	0.0000
412.8332	0.0000	0.0000
450.4965	0.0000	0.0000
491.5352	0.0000	0.0000
517.9651	0.0000	0.0000
542.3181	0.0000	0.0000
482.5976	0.0000	0.0000
467.2001	0.0000	0.0000
484.5461	0.0000	0.0000
553.2133	0.0000	0.0000
550.5658	0.0000	0.0000
617.4310	0.0000	0.0000
639.2216	0.0000	0.0000
626.8516	0.0000	0.0000
638.9750	0.0000	0.0000
639.8568	0.0000	0.0000
626.4120	0.0000	0.0000
682.9267	0.0000	0.0000
716.8720	0.0000	0.0000
702.1296	0.0000	15.2159
776.1327	0.0000	41.9348
770.8182	0.0000	492.5462
727.2371	0.0000	364.9835
752.1265	0.0000	38.6285
682.0963	0.0000	14.4670
677.2858	0.0000	0.0000
696.5904	0.0000	0.0000
641.4691	0.0000	0.0000
636.6589	0.0000	0.0000
618.3406	0.0000	0.0000
581.9360	0.0000	0.0000
593.9268	0.0000	0.0000
562.6318	0.0000	0.0000
591.3046	0.0000	0.0000
599.6813	0.0000	0.0000
548.5999	0.0000	0.0000
531.0475	0.0000	0.0000
518.3646	0.0000	0.0000
459.4709	0.0000	0.0000
447.4679	0.0000	0.0000
435.2374	0.0000	0.0000
412.0360	0.0000	0.0000

433.6185	0.0000	0.0000
452.6982	0.0000	0.0000
449.9673	0.0000	0.0000
408.8321	0.0000	0.0000
391.4649	0.0000	0.0000
384.7156	0.0000	0.0000
353.2406	0.0000	0.0000
401.1640	0.0000	0.0000
357.2557	0.0000	0.0000
371.0647	0.0000	0.0000
364.1146	0.0000	0.0000
353.1796	0.0000	0.0000
327.6280	0.0000	0.0000
323.1605	0.0000	0.0000
356.1177	0.0000	0.0000
333.5980	0.0000	0.0000
352.6134	0.0000	0.0000
359.0945	0.0000	0.5024
318.8971	0.0000	1.5334
331.1343	0.0000	31.5952
324.0447	0.0000	4.9924
321.0706	0.0000	0.8829
317.8434	0.0000	0.3583
305.2881	0.0000	0.0000
318.7526	0.0000	0.0000
329.9266	0.0000	0.0000
358.4034	0.0000	0.0000
329.1392	0.0000	0.0000
309.1706	0.0000	0.0000
313.9749	0.0000	0.0000
297.9537	0.0000	0.0000
307.8396	0.0000	0.0000
318.2365	0.0000	0.0000
297.9165	0.0000	0.0000
310.2726	0.0000	0.0000
330.1598	0.0000	0.0000
325.1667	0.0000	0.0000
300.9054	0.0000	0.0000
293.5867	0.0000	0.0000
295.1772	0.0000	0.0000
321.2386	0.0000	0.0000
329.8086	0.0000	0.0000
308.2276	0.0000	0.0000
280.9595	0.0000	0.0000
287.4790	0.0000	0.0000
325.8287	0.0000	0.0000
331.6828	0.0000	0.0000
323.6290	0.0000	0.0000
318.6371	0.0000	0.0000
299.8242	0.0000	0.0000
273.8201	0.0000	0.0000
319.9388	0.0000	0.0000
325.1056	0.0000	0.0000
307.6844	0.0000	0.0000
302.0678	0.0000	0.0000
286.1619	0.0000	0.0000
283.4520	0.0000	0.0000
283.6801	0.0000	0.0000
328.5562	0.0000	0.0000
305.1293	0.0000	0.0000
310.7837	0.0000	0.0000

309.3105	0.0000	0.0000
295.7513	0.0000	0.0000
271.8877	0.0000	0.0000
293.8391	0.0000	0.0000
293.8077	0.0000	0.0000
306.3352	0.0000	0.0000
303.2053	0.0000	0.0000
300.1388	0.0000	0.0000
324.9918	0.0000	0.0000
284.8520	0.0000	0.0000
339.9190	0.0000	0.0000
314.0435	0.0000	0.0000
309.6022	0.0000	0.0000
328.2148	0.0000	0.0000
322.6995	0.0000	0.0000
334.2138	0.0000	0.0000
347.6226	0.0000	0.0000
318.6806	0.0000	0.0000
335.7433	0.0000	0.0000
365.7146	0.0000	0.0000
348.8169	0.0000	0.0000
331.4895	0.0000	0.0000
311.3272	0.0000	0.0000
304.2848	0.0000	0.0000
300.3285	0.0000	0.0000
316.1262	0.0000	0.0000
353.7578	0.0000	0.0000
370.6138	0.0000	0.0000
374.4165	0.0000	0.0000
399.5555	0.0000	0.0000
384.5028	0.0000	0.0000
367.0985	0.0000	0.0000
374.5972	0.0000	3.9198
379.3949	0.0000	13.2222
376.7001	0.0000	351.2740
419.8471	0.0000	22.5387
426.4886	0.0000	5.1371
429.8454	0.0000	0.0000
441.5573	0.0000	0.0000
388.0683	0.0000	0.0000
386.4991	0.0000	0.0000
401.0226	0.0000	0.0000
425.6110	0.0000	0.0000
443.0463	0.0000	0.0000
436.3227	0.0000	0.0000
409.6768	0.0000	0.0000
411.3907	0.0000	0.0000
406.6612	0.0000	0.0000
409.9465	0.0000	0.0000
430.1548	0.0000	0.0000
439.2545	0.0000	0.0000
390.5296	0.0000	0.0000
407.5851	0.0000	0.0000
445.9358	0.0000	0.0000
429.4663	0.0000	0.0000
419.5264	0.0000	0.0000
444.2215	0.0000	0.0000
451.5254	0.0000	0.0000
401.0166	0.0000	0.0000
419.4464	0.0000	0.0000
457.9067	0.0000	0.0000

446.3454	0.0000	0.0000
482.8933	0.0000	0.0000
424.1111	0.0000	0.0000
442.4479	0.0000	0.0000
484.5879	0.0000	0.0000
440.2141	0.0000	0.0000
452.6698	0.0000	0.0000
510.9393	0.0000	11.2245
486.3032	0.0000	33.3297
470.5499	0.0000	607.0658
500.4279	0.0000	136.0740
488.6378	0.0000	21.6112
502.4396	0.0000	8.6054
563.5211	0.0000	0.0000
501.1833	0.0000	0.0000
500.9705	0.0000	0.0000
446.1851	0.0000	0.0000
449.3190	0.0000	0.0000
470.8028	0.0000	0.0000
461.0986	0.0000	0.0000
482.9568	0.0000	0.0125
481.2839	0.0000	0.0379
518.6594	0.0000	1.5759
486.0059	0.0000	2.1903
447.6289	0.0000	12.7428
414.3149	0.0000	60.1990
402.8304	0.0000	3.2356
394.5298	0.0000	1.0849
400.4966	0.0000	0.0000
400.9926	0.0000	0.0000
412.1379	0.0000	0.0000
410.1925	0.0000	0.0000
389.7480	0.0000	0.0000
410.0886	0.0000	0.0000
390.1344	0.0000	0.0000
366.1348	0.0000	0.0000
369.3745	0.0000	0.0000
366.5352	0.0000	0.0000
353.4826	0.0000	0.0000
342.1958	0.0000	0.0000
353.2584	0.0000	0.0000
327.5529	0.0000	0.0000
330.1512	0.0000	0.0000
337.2497	0.0000	0.0000
313.8337	0.0000	0.0000
314.8621	0.0000	0.0000
316.3744	0.0000	0.0000
324.9179	0.0000	0.0000
346.0302	0.0000	0.0000
334.6043	0.0000	0.0000
303.0069	0.0000	0.0000
287.7473	0.0000	0.0000
307.0012	0.0000	0.0000
279.2868	0.0000	0.0000
278.2822	0.0000	0.0000
262.1883	0.0000	0.0000
276.2218	0.0000	0.0000
277.5017	0.0000	0.0000
321.9328	0.0000	0.0000
327.0461	0.0000	0.0000
315.0635	0.0000	0.0000

293.7483	0.0000	0.0000
268.3367	0.0000	0.0000
285.9289	0.0000	0.0000
269.6548	0.0000	0.0000
310.5753	0.0000	0.0000
282.5943	0.0000	0.0000
324.7126	0.0000	0.0000
291.5405	0.0000	0.0000
260.1449	0.0000	0.0000
271.4848	0.0000	0.0000
307.6809	0.0000	0.0000
248.0488	0.0000	0.0000
301.7171	0.0000	0.0000
310.8771	0.0000	0.0000
292.3560	0.0000	0.0000
272.0177	0.0000	0.0000
256.6623	0.0000	0.0000
276.8319	0.0000	0.0000
272.8011	0.0000	0.0000
301.7696	0.0000	0.0000
269.2995	0.0000	0.0000
286.6262	0.0000	0.0000
291.3736	0.0000	0.0000
267.5329	0.0000	0.0000
261.1095	0.0000	0.0000
256.1760	0.0000	0.0000
263.4634	0.0000	0.0000
292.5527	0.0000	0.0000
298.6878	0.0000	0.0000
292.2679	0.0000	0.0000
283.5578	0.0000	0.0000
276.3589	0.0000	0.0000
248.7615	0.0000	0.0000
264.8432	0.0000	0.0000
264.4645	0.0000	0.0000
246.9172	0.0000	0.0000
288.9636	0.0000	0.0000
303.3742	0.0000	0.0000
297.8994	0.0000	0.0000
275.3859	0.0000	0.0000
269.9866	0.0000	0.0000
272.7830	0.0000	0.0000
251.5197	0.0000	0.0000
240.5372	0.0000	0.0000
264.4060	0.0000	0.0000
257.5554	0.0000	0.0000
277.5685	0.0000	0.0000
272.8664	0.0000	0.0000
288.2462	0.0000	0.0000
287.1922	0.0000	0.0000
285.6941	0.0000	0.0000
301.8062	0.0000	0.0000
310.7415	0.0000	0.0000
282.0709	0.0000	0.0000
285.2392	0.0000	0.0000
278.7198	0.0000	0.0000
274.9055	0.0000	0.0000
263.0368	0.0000	0.0000
216.5101	0.0000	0.0000
315.7759	0.0000	0.0000
276.0469	0.0000	0.0000

308.5591	0.0000	0.0000
313.8359	0.0000	0.0000
300.6342	0.0000	0.0000
250.4139	0.0000	0.0000
270.0865	0.0000	0.0000
268.9174	0.0000	0.0000
258.5780	0.0000	0.0000
293.1916	0.0000	0.0000
238.2610	0.0000	0.0000
272.6047	0.0000	0.0000
284.4608	0.0000	0.0000
280.3811	0.0000	0.0000
274.4660	0.0000	0.0000
286.9136	0.0000	0.0000
247.8103	0.0000	0.0000
273.7409	0.0000	0.0000
267.3476	0.0000	0.0000
282.3811	0.0000	0.0000
257.2214	0.0000	0.0000
271.4676	0.0000	0.0000
260.7709	0.0000	0.0000
262.5469	0.0000	0.0000
249.6060	0.0000	0.0000
275.6346	0.0000	0.0000
267.8378	0.0000	0.0000
292.4619	0.0000	0.0000
282.4535	0.0000	0.0000
304.2465	0.0000	0.0000
299.6338	0.0000	0.0000
273.2973	0.0000	0.0000
257.8489	0.0000	0.0000
246.2668	0.0000	0.0000
252.7044	0.0000	0.0000
254.2449	0.0000	0.0000
260.7164	0.0000	0.0000
282.5859	0.0000	0.0000
289.9613	0.0000	0.0000
312.6771	0.0000	0.0000
305.0568	0.0000	0.0000
272.4635	0.0000	0.0000
263.5112	0.0000	0.0000
260.3304	0.0000	0.0000
280.7268	0.0000	0.0000
295.3633	0.0000	0.0000
243.6103	0.0000	0.0000
289.0196	0.0000	0.0000
312.7984	0.0000	0.0000
301.7025	0.0000	0.0000
300.2297	0.0000	0.0000
300.3892	0.0000	0.0000
279.6278	0.0000	0.0000
244.2316	0.0000	0.0000
258.3125	0.0000	0.0000
264.8699	0.0000	0.0000
279.7293	0.0000	0.0000
292.9044	0.0000	0.0000
324.8330	0.0000	0.0000
318.7571	0.0000	0.0000
294.0312	0.0000	0.0000
281.1240	0.0000	0.0000
288.8757	0.0000	0.0000

271.1014	0.0000	0.0000
270.4871	0.0000	0.0000
271.0168	0.0000	0.0000
282.5620	0.0000	0.0000
256.1596	0.0000	0.0000
261.8065	0.0000	0.0000
311.5380	0.0000	0.0000
294.1898	0.0000	0.0000
281.8776	0.0000	0.0000
320.5308	0.0000	0.0000
321.3694	0.0000	0.0000
272.6510	0.0000	0.0000
305.0260	0.0000	0.0000
294.3181	0.0000	0.0000
268.2382	0.0000	0.0000
273.3225	0.0000	0.0000
277.7462	0.0000	0.0000
271.2570	0.0000	0.0000
321.1088	0.0000	0.0000
319.8901	0.0000	0.0000
309.8586	0.0000	0.0000
300.0887	0.0000	0.0000
295.8271	0.0000	0.0000
264.3463	0.0000	0.0000
285.6881	0.0000	0.0000
293.9646	0.0000	0.0000
285.1427	0.0000	0.0000
293.1141	0.0000	0.0000
299.0310	0.0000	0.0000
275.1883	0.0000	0.0000
301.2900	0.0000	0.0000
330.7741	0.0000	0.0000
319.9784	0.0000	0.0000
305.5910	0.0000	0.0000
333.2052	0.0000	0.0000
342.8720	0.0000	0.0000
351.1994	0.0000	0.0000
358.9167	0.0000	0.0000
351.9497	0.0000	0.0000
351.5283	0.0000	0.0000
305.5914	0.0000	0.0000
307.3772	0.0000	0.0000
369.7800	0.0000	0.0000
312.0894	0.0000	0.0000
320.6368	0.0000	0.0000
381.4079	0.0000	0.0000
426.9176	0.0000	0.0000
345.3144	0.0000	0.0000
408.6872	0.0000	0.0000
432.8273	0.0000	0.0000
353.4605	0.0000	0.0000
349.2382	0.0000	0.0000
361.1469	0.0000	0.0000
395.3629	0.0000	0.0000
366.5663	0.0000	0.0000
456.9376	0.0000	0.0000
492.3515	0.0000	0.0000
476.5145	0.0000	0.0000
530.3154	0.0000	0.0000
525.0754	0.0000	0.0000
459.6158	0.0000	0.0000

418.2144	0.0000	0.0000
497.9312	0.0000	0.0000
502.0457	0.0000	0.0000
526.1610	0.0000	0.0000
583.1525	0.0000	0.0000
598.2892	0.0000	0.0000
615.0953	0.0000	0.0000
600.5471	0.0000	0.0000
640.3903	0.0000	0.0000
610.4459	0.0000	0.0000
610.4837	0.0000	0.0000
622.0414	0.0000	0.0000
602.5817	0.0000	0.0000
660.5074	0.0000	0.0000
724.5522	0.0000	0.0000
690.6771	0.0000	0.0000
678.9343	0.0000	0.0000
715.5598	0.0000	20.3837
730.1796	0.0000	57.5084
703.4504	0.0000	785.4542
677.2162	0.0000	386.0396
674.0853	0.0000	47.2288
655.9821	0.0000	18.0612
630.1959	0.0000	0.0000
645.2896	0.0000	0.0000
646.1044	0.0000	0.0000
641.5865	0.0000	0.0000
657.6495	0.0000	0.0000
635.4244	0.0000	0.0000
605.1165	0.0000	0.0000
569.6379	0.0000	0.0000
561.0458	0.0000	0.0000
506.9931	0.0000	0.0000
508.7899	0.0000	0.0000
478.7640	0.0000	0.0000
482.2359	0.0000	0.0000
490.1096	0.0000	0.0000
473.2439	0.0000	0.0000
455.6774	0.0000	0.0000
474.7999	0.0000	0.0000
493.0804	0.0000	0.0000
419.9178	0.0000	0.0000
387.1096	0.0000	0.0000
423.2094	0.0000	0.0000
391.1547	0.0000	0.0000
373.1653	0.0000	0.0000
397.7152	0.0000	0.0000
362.5462	0.0000	0.0000
348.9437	0.0000	0.0000
403.2950	0.0000	0.0000
388.8383	0.0000	0.0000
362.1087	0.0000	0.0000
364.1909	0.0000	0.0000
394.1435	0.0000	0.0000
385.6017	0.0000	0.0000
337.6435	0.0000	0.0000
361.5233	0.0000	0.0000
356.4926	0.0000	0.0000
308.9956	0.0000	0.0000
316.2334	0.0000	0.0000
310.7705	0.0000	0.0000

339.2738	0.0000	0.0000
345.2790	0.0000	0.0000
308.5078	0.0000	0.0000
315.5642	0.0000	0.0000
301.9278	0.0000	0.0000
309.3185	0.0000	0.0000
308.4190	0.0000	0.0000
323.8499	0.0000	0.0000
344.7911	0.0000	0.0000
296.0617	0.0000	0.0000
279.1098	0.0000	0.0000
289.8985	0.0000	0.0000
291.8589	0.0000	0.0000
284.4660	0.0000	0.0000
300.5924	0.0000	0.0000
305.3642	0.0000	0.0000
314.6704	0.0000	0.0000
316.6465	0.0000	0.0000
326.1173	0.0000	0.0000
309.2256	0.0000	0.0000
272.5091	0.0000	0.0000
262.6491	0.0000	0.0000
290.2320	0.0000	0.0000
284.5692	0.0000	0.0000
281.4500	0.0000	0.0000
298.7690	0.0000	0.0000
317.2711	0.0000	0.0000
331.4423	0.0000	0.0000
294.8852	0.0000	0.0000
295.2894	0.0000	0.0000
312.2162	0.0000	0.0000
319.1817	0.0000	0.0000
286.9502	0.0000	0.0000
280.5203	0.0000	0.0000
330.6806	0.0000	0.0000
292.0335	0.0000	0.0000
315.6060	0.0000	0.0000
283.5276	0.0000	0.0000
292.1187	0.0000	0.0000
303.5919	0.0000	0.0000
299.4084	0.0000	0.0000
297.1658	0.0000	0.0000
277.5416	0.0000	0.0000
312.3877	0.0000	0.0000
292.8415	0.0000	0.0000
303.2850	0.0000	0.0000
295.7859	0.0000	0.0000
311.0810	0.0000	0.0000
277.3206	0.0000	0.0000
294.8926	0.0000	0.0000
312.7692	0.0000	0.0000
261.2704	0.0000	0.0000
274.9479	0.0000	0.0846
262.7181	0.0000	0.2026
284.9832	0.0000	0.9924
274.1563	0.0000	10.3294
279.0064	0.0000	0.4276
289.0028	0.0000	0.1335
294.4010	0.0000	0.0000
291.9888	0.0000	0.0000
293.8481	0.0000	0.0000

316.6423	0.0000	0.0000
298.3317	0.0000	0.0000
313.1322	0.0000	0.0000
282.9242	0.0000	0.0000
311.9344	0.0000	0.0000
285.2421	0.0000	0.0000
280.8116	0.0000	0.0000
267.7156	0.0000	0.0000
284.3045	0.0000	0.0000
303.1137	0.0000	0.0000
296.8566	0.0000	0.0000
292.7940	0.0000	0.0000
307.3019	0.0000	0.0000
326.0371	0.0000	0.0000
316.1104	0.0000	0.0000
327.6064	0.0000	0.0000
335.6196	0.0000	0.1714
328.1425	0.0000	0.1795
307.4674	0.0000	0.1882
302.5291	0.0000	0.1975
329.2519	0.0000	0.2075
302.2076	0.0000	0.2183
282.3618	0.0000	0.2300
310.4745	0.0000	0.2426
295.7064	0.0000	0.2563
286.5161	0.0000	0.2711
312.0102	0.0000	0.6084
346.9711	0.0000	0.6374
325.1166	0.0000	0.6685
286.8173	0.0000	0.7022
328.1999	0.0000	0.7388
320.4479	0.0000	0.7784
321.6015	0.0000	0.8216
322.5714	0.0000	0.8689
313.4419	0.0000	0.9206
302.9272	0.0000	0.9776
342.4984	0.0000	1.0405
322.7188	0.0000	1.1104
336.7094	0.0000	1.1883
362.2076	0.0000	1.2757
371.1884	0.0000	1.3747
350.8610	0.0000	1.4882
371.7336	0.0000	1.6203
379.3765	0.0000	1.7775
341.3388	0.0000	1.9699
338.1435	0.0000	2.2126
356.4799	0.0000	2.5280
334.2461	0.0000	3.1255
360.3351	0.0000	3.6963
363.8377	0.0000	4.4647
420.8641	0.0000	5.4880
370.1741	0.0000	6.8208
391.7908	0.0000	8.5062
410.8334	0.0000	10.5585
378.1860	0.0000	12.9509
373.3303	0.0000	15.5923
380.0028	0.0000	18.3079
421.0093	0.0000	20.8111
376.1794	0.0000	22.7153
395.9580	0.0000	23.6288
415.8400	0.0000	23.3479

432.9006	0.0000	21.9914
392.8767	0.0000	19.9246
392.3867	0.0000	17.5610
405.6237	0.0000	15.2341
375.1756	0.0000	13.1660
392.0829	0.0000	11.4920
381.2393	0.0000	10.2827
390.2116	0.0000	9.5680
384.6970	0.0000	9.3516
390.1637	0.0000	9.6260
401.6931	0.0000	10.3822
420.1577	0.0000	11.6150
419.1865	0.0000	13.3214
394.5031	0.0000	15.4983
368.6895	0.0000	18.1317
379.2332	0.0000	21.1907
402.4233	0.0000	24.6123
405.0939	0.0000	28.2932
401.6868	0.0000	32.0750
410.9704	0.0000	35.7273
439.1990	0.0000	38.9498
417.4482	0.0000	41.3900
414.4916	0.0000	42.7170
422.0860	0.0000	42.7218
442.0136	0.0000	41.4020
425.2220	0.0000	38.9627
410.2010	0.0000	35.7333
419.4919	0.0000	32.0633
410.7452	0.0000	28.2554
415.8040	0.0000	24.5355
372.1481	0.0000	21.0620
428.1330	0.0000	17.9320
422.3433	0.0000	15.1997
465.4948	0.0000	12.8815
421.8161	0.0000	10.9698
431.7260	0.0000	9.4369
434.0966	0.0000	8.2457
467.7980	0.0000	7.3538
423.0352	0.0000	6.7198
383.9093	0.0000	6.3070
406.7054	0.0000	6.0854
410.1954	0.0000	6.0329
359.8501	0.0000	6.1347
350.4411	0.0000	6.2241
426.3478	0.0000	6.6227
379.9235	0.0000	7.1653
374.6835	0.0000	7.8542
398.9591	0.0000	8.6920
451.6759	0.0000	9.6787
445.5174	0.0000	10.8113
412.5760	0.0000	12.0807
457.7535	0.0000	13.4721
444.4787	0.0000	14.9605
423.8071	0.0000	16.5117
424.1679	0.0000	18.0772
411.2312	0.0000	19.5947
386.1436	0.0000	20.9873
396.0753	0.0000	22.1651
401.6454	0.0000	23.0369
395.6175	0.0000	23.5221
432.9291	0.0000	23.5700

423.5336	0.0000	23.1713
414.6915	0.0000	22.3612
408.2458	0.0000	21.2379
409.6400	0.0000	19.8350
392.6492	0.0000	18.2711
365.2994	0.0000	16.6275
381.5048	0.0000	14.9716
374.0501	0.0000	13.3563
384.6367	0.0000	11.8196
364.5750	0.0000	10.4786
369.8127	0.0000	9.1760
373.4376	0.0000	8.2297
381.1860	0.0000	7.1932
400.3852	0.0000	6.2885
359.4377	0.0000	5.5086
375.9428	0.0000	4.8436
381.7871	0.0000	4.2825
356.4968	0.0000	3.8126
338.1808	0.0000	3.4216
335.1441	0.0000	3.0976
323.5025	0.0000	2.5189
296.2401	0.0000	2.3070
319.7104	0.0000	2.1322
361.2740	0.0000	1.9873
323.5040	0.0000	1.8664
338.6133	0.0000	1.7647
327.4694	0.0000	1.6783
331.1245	0.0000	1.6044
324.0023	0.0000	1.5406
328.4615	0.0000	1.4852
325.6380	0.0000	1.4367
318.9665	0.0000	1.3942
303.1286	0.0000	1.3567
309.4629	0.0000	1.3237
317.5940	0.0000	1.2947
291.2104	0.0000	1.2693
284.6539	0.0000	1.2471
320.3697	0.0000	1.2279
305.5529	0.0000	1.2114
296.0640	0.0000	1.1974
293.9071	0.0000	1.1858
307.2652	0.0000	1.1765
328.8408	0.0000	1.2649
292.5610	0.0000	1.2611
275.2964	0.0000	1.2594
292.6349	0.0000	1.2595
320.1286	0.0000	1.2614
270.2274	0.0000	1.2650
269.4038	0.0000	1.2704
294.2939	0.0000	1.2774
337.7123	0.0000	1.2861
288.4145	0.0000	1.2964
265.8074	0.0000	1.3084
292.2228	0.0000	1.3220
310.4798	0.0000	1.3372
303.3422	0.0000	1.3540
269.0384	0.0000	1.3726
287.1536	0.0000	1.3928
293.1836	0.0000	1.4147
268.1407	0.0000	1.4384
273.0058	0.0000	1.4640

309.2051	0.0000	1.4914
333.0281	0.0000	1.5208
320.9603	0.0000	1.5522
319.2639	0.0000	1.5858
324.5028	0.0000	1.6215
307.6472	0.0000	1.6596
300.8614	0.0000	1.7002
308.1472	0.0000	1.7435
286.6498	0.0000	1.7895
282.3228	0.0000	1.8385
290.8635	0.0000	1.8908
297.2847	0.0000	1.9465
305.8589	0.0000	1.8313
321.2136	0.0000	1.8996
310.8900	0.0000	1.9723
312.6762	0.0000	2.0500
324.0185	0.0000	2.1331
315.3271	0.0000	2.2224
306.2957	0.0000	2.3188
338.4442	0.0000	2.4230
338.4657	0.0000	2.5363
310.3320	0.0000	2.6599
297.8784	0.0000	2.7953
307.5521	0.0000	2.9441
333.2980	0.0000	3.1084
312.6095	0.0000	3.2903
300.7776	0.0000	3.4924
340.5585	0.0000	3.7176
368.7647	0.0000	3.9690
370.6428	0.0000	4.2504
327.4905	0.0000	4.5654
305.7396	0.0000	4.9184
325.5191	0.0000	5.3142
325.9741	0.0000	5.7576
356.8292	0.0000	6.2539
305.0675	0.0000	6.8083
348.8528	0.0000	7.4268
365.0076	0.0000	8.1145
379.4043	0.0000	8.8773
395.5118	0.0000	9.7202
367.9466	0.0000	10.6481
436.6098	0.0000	11.6655
380.4620	0.0000	12.7753
406.4235	0.0000	13.9804
374.7003	0.0000	15.2812
372.6365	0.0000	16.6778
392.1650	0.0000	18.1670
374.9175	0.0000	19.7451
429.4789	0.0000	21.4046
405.1946	0.0000	23.1368
442.0768	0.0000	24.9306
444.3645	0.0000	26.7713
463.4677	0.0000	28.6434
464.6824	0.0000	30.5273
457.2549	0.0000	32.4024
493.2548	0.0000	34.2437
526.6837	0.0000	36.0248
534.3643	0.0000	37.7147
517.8939	0.0000	39.2808
559.9330	0.0000	40.6868
570.4834	0.0000	41.8964

538.3986	0.0000	42.8742
546.9811	0.0000	43.5872
549.8282	0.0000	44.0094
569.0505	0.0000	44.1229
542.6017	0.0000	43.9207
556.8597	0.0000	43.4073
611.0018	0.0000	42.5992
610.0754	0.0000	41.5235
639.1753	0.0000	40.2151

_pd_meas_number_of_points	2118
_pd_proc_number_of_points	2118

data_3P

_audit_creation_date	'2011/02/22 04:52:51 PM'
_audit_creation_method	'Generated by X_Pert HighScore Plus 2.2.5'

_chemical_name_systematic

;
?
;

_chemical_formula_sum

;
C4 H4 Cd Cl2 N2
;

loop_

_symmetry_equiv_pos_as_xyz

'X, Y, Z'
'-X, Y, -Z'
'-X, -Y, -Z'
'X, -Y, Z'
'X+1/2, Y+1/2, Z'
'-X+1/2, Y+1/2, -Z'
'-X+1/2, -Y+1/2, -Z'
'X+1/2, -Y+1/2, Z'

_xact_pref_orient_vector_h	0.00000000
_xact_pref_orient_vector_k	1.00000000
_xact_pref_orient_vector_l	0.00000000
_xact_pref_orient_param	1.265602
_xact_scale_factor	0.000445
_xact_cagliotti_U	10.000000
_xact_cagliotti_V	0.000000
_xact_cagliotti_W	0.000000
_xact_shape_param_1	0.600000
_xact_shape_param_2	0.000000
_xact_shape_param_3	0.000000
_xact_asym_param_1	0.000000
_xact_asym_param_2	0.000000
_cell_length_a	12.07(1)
_cell_length_b	7.48(2)
_cell_length_c	3.735(7)
_cell_angle_alpha	90

_cell_angle_beta 93.3 (1)
_cell_angle_gamma 90

_symmetry_space_group_name_H-M 'C 1 2/m 1'
_symmetry_Int_Tables_number 12

loop_
_atom_site_label
_atom_site_type_symbol
_atom_site_fract_x
_atom_site_fract_y
_atom_site_fract_z
_atom_site_U_iso_or_equiv
_atom_site_thermal_displace_type
_atom_site_occupancy
_atom_site_symmetry_multiplicity
_atom_site_Wyckoff_symbol
_atom_site_calc_flag
Cd1 CD 0.000000 0.000000 0.000000 0.014900 Uiso 0.500000 2 a d
Cl1 Cl 0.154350 0.000000 0.528200 0.015800 Uiso 1.000000 4 i d
N1 N 0.000000 0.316600 0.000000 0.016200 Uiso 1.000000 4 g d
C1 C 0.409700 0.092200 0.087800 0.018400 Uiso 1.000000 8 j d
H1 H 0.345200 0.152600 0.150500 0.022000 Uiso 1.000000 8 j c
Cu1 Cu 0.000000 0.000000 0.000000 0.014894 Uiso 0.500000 2 a d

loop_
_atom_site_aniso_label
_atom_site_aniso_U_11
_atom_site_aniso_U_22
_atom_site_aniso_U_33
_atom_site_aniso_U_23
_atom_site_aniso_U_13
_atom_site_aniso_U_12
Cd1 0.000000 0.000000 0.000000 0.000000 0.000000 0.000000
Cl1 0.016523 0.020694 0.012073 0.000000 0.003392 0.000000
N1 0.017168 0.016310 0.015965 0.000000 -0.001031 0.000000
C1 0.019314 0.018349 0.018958 -0.001006 0.003104 0.001042
H1 0.000000 0.000000 0.000000 0.000000 0.000000 0.000000
Cu1 0.000000 0.000000 0.000000 0.000000 0.000000 0.000000

_refine_ls_R_factor_all 0.55503662

data_ml137refb_p_01

_diffrn_source_target Cu
_diffrn_radiation_probe x-ray
_diffrn_radiation_wavelength 1.540598
_diffrn_radiation_type 'Cu K\alpha-1~'

loop_
_pd_peak_id
_pd_peak_2theta_centroid
_pd_peak_d_spacing
_pd_peak_pk_height
_pd_peak_width_2theta
PK1 13.913 6.360 38531.4 0.3863
PK2 14.679 6.030 59341.4 0.4078
PK3 23.766 3.741 28037.2 0.6659
PK4 23.818 3.733 24303.6 0.6674
PK5 25.139 3.540 2936.8 0.7056

PK17	1	3	0	PH00	o	5382.018	9917.958	0.00	15.19
PK18	4	0	-1	PH00	o	10867.166	21029.730	0.00	15.68
PK19	2	2	1	PH00	o	4830.261	10697.687	0.00	15.51
PK20	4	2	0	PH00	o	78.205	199.152	0.00	0.28
PK21	5	1	0	PH00	o	6668.419	15542.574	0.00	20.63
PK22	4	0	1	PH00	o	11293.536	26768.916	0.00	17.52

_reflns_number_observed	22
_reflns_limit_h_min	0
_reflns_limit_h_max	5
_reflns_limit_k_min	0
_reflns_limit_k_max	3
_reflns_limit_l_min	-1
_reflns_limit_l_max	1
_reflns_d_resolution_high	2.280
_reflns_d_resolution_low	6.360

_pd_meas_datetime_initiated	'2011/01/14 02:51:46 PM'
_pd_instr_cons_illum_flag	no
_pd_meas_2theta_range_min	3.99535563
_pd_meas_2theta_range_max	39.98435563
_pd_meas_2theta_range_inc	0.01700000
_pd_proc_2theta_range_min	3.99535563
_pd_proc_2theta_range_max	39.98435563
_pd_proc_2theta_range_inc	0.01700000

loop_		
_pd_meas_intensity_total		
_pd_proc_intensity_bgk_calc		
_pd_calc_intensity_total		
304.0006	0.0000	0.0000
289.1621	0.0000	0.0000
293.1790	0.0000	0.0000
315.3817	0.0000	0.0000
284.3785	0.0000	0.0000
271.3323	0.0000	0.0000
284.2832	0.0000	0.0000
300.2160	0.0000	0.0000
286.5948	0.0000	0.0000
287.9639	0.0000	0.0000
298.0915	0.0000	0.0000
269.6965	0.0000	0.0000
328.2865	0.0000	0.0000
274.5237	0.0000	0.0000
292.5580	0.0000	0.0000
280.9724	0.0000	0.0000
285.6780	0.0000	0.0000
291.5342	0.0000	0.0000
274.6572	0.0000	0.0000
290.4677	0.0000	0.0000
279.8590	0.0000	0.0000
294.1899	0.0000	0.0000
279.4406	0.0000	0.0000
271.5737	0.0000	0.0000
284.4551	0.0000	0.0000

300.9772	0.0000	0.0000
290.2914	0.0000	0.0000
301.7763	0.0000	0.0000
258.5746	0.0000	0.0000
247.2059	0.0000	0.0000
262.6210	0.0000	0.0000
290.1242	0.0000	0.0000
293.1629	0.0000	0.0000
290.3954	0.0000	0.0000
280.1494	0.0000	0.0000
287.7414	0.0000	0.0000
309.6296	0.0000	0.0000
301.2383	0.0000	0.0000
281.2968	0.0000	0.0000
280.2888	0.0000	0.0000
300.9596	0.0000	0.0000
261.6260	0.0000	0.0000
272.9898	0.0000	0.0000
274.7586	0.0000	0.0000
240.6868	0.0000	0.0000
278.2968	0.0000	0.0000
284.9240	0.0000	0.0000
248.3686	0.0000	0.0000
289.4833	0.0000	0.0000
261.7915	0.0000	0.0000
290.6276	0.0000	0.0000
257.4641	0.0000	0.0000
300.9984	0.0000	0.0000
249.9752	0.0000	0.0000
249.6744	0.0000	0.0000
253.8926	0.0000	0.0000
231.3602	0.0000	0.0000
280.5367	0.0000	0.0000
242.5659	0.0000	0.0000
238.0901	0.0000	0.0000
265.5298	0.0000	0.0000
243.6862	0.0000	0.0000
256.2511	0.0000	0.0000
271.8798	0.0000	0.0000
261.4005	0.0000	0.0000
244.5214	0.0000	0.0000
266.6519	0.0000	0.0000
244.9197	0.0000	0.0000
218.0035	0.0000	0.0000
268.0902	0.0000	0.0000
248.7334	0.0000	0.0000
270.6104	0.0000	0.0000
259.6875	0.0000	0.0000
255.5277	0.0000	0.0000
247.5583	0.0000	0.0000
240.0294	0.0000	0.0000
243.5322	0.0000	0.0000
248.7502	0.0000	0.0000
239.3207	0.0000	0.0000
252.6366	0.0000	0.0000
259.3241	0.0000	0.0000
253.4970	0.0000	0.0000
269.8578	0.0000	0.0000
266.9131	0.0000	0.0000
232.1866	0.0000	0.0000
250.7080	0.0000	0.0000

243.9967	0.0000	0.0000
227.9627	0.0000	0.0000
216.1786	0.0000	0.0000
216.2195	0.0000	0.0000
227.1384	0.0000	0.0000
222.8245	0.0000	0.0000
229.0185	0.0000	0.0000
240.8718	0.0000	0.0000
227.8566	0.0000	0.0000
217.7512	0.0000	0.0000
219.4665	0.0000	0.0000
259.4381	0.0000	0.0000
258.3956	0.0000	0.0000
242.2029	0.0000	0.0000
230.4185	0.0000	0.0000
231.9479	0.0000	0.0000
227.6938	0.0000	0.0000
243.2490	0.0000	0.0000
230.3577	0.0000	0.0000
232.6162	0.0000	0.0000
218.7014	0.0000	0.0000
206.1030	0.0000	0.0000
237.7484	0.0000	0.0000
219.0604	0.0000	0.0000
216.6640	0.0000	0.0000
232.2716	0.0000	0.0000
198.7471	0.0000	0.0000
225.0556	0.0000	0.0000
216.3515	0.0000	0.0000
216.8772	0.0000	0.0000
216.5905	0.0000	0.0000
225.9416	0.0000	0.0000
231.5262	0.0000	0.0000
216.5738	0.0000	0.0000
230.8867	0.0000	0.0000
236.6550	0.0000	0.0000
211.1135	0.0000	0.0000
195.1947	0.0000	0.0000
209.1154	0.0000	0.0000
212.3521	0.0000	0.0000
241.4707	0.0000	0.0000
219.0488	0.0000	0.0000
208.7072	0.0000	0.0000
229.1895	0.0000	0.0000
212.2289	0.0000	0.0000
206.4664	0.0000	0.0000
216.0125	0.0000	0.0000
215.5048	0.0000	0.0000
214.4546	0.0000	0.0000
211.4615	0.0000	0.0000
198.0186	0.0000	0.0000
211.6616	0.0000	0.0000
205.0208	0.0000	0.0000
209.3333	0.0000	0.0000
223.7529	0.0000	0.0000
199.2419	0.0000	0.0000
191.1002	0.0000	0.0000
204.5697	0.0000	0.0000
217.8820	0.0000	0.0000
222.0282	0.0000	0.0000
218.0316	0.0000	0.0000

226.3829	0.0000	0.0000
231.2659	0.0000	0.0000
197.3316	0.0000	0.0000
207.2673	0.0000	0.0000
231.8079	0.0000	0.0000
211.3107	0.0000	0.0000
207.7713	0.0000	0.0000
190.2744	0.0000	0.0000
217.6630	0.0000	0.0000
207.4347	0.0000	0.0000
200.4447	0.0000	0.0000
213.9070	0.0000	0.0000
197.1046	0.0000	0.0000
207.3280	0.0000	0.0000
234.8225	0.0000	0.0000
191.2389	0.0000	0.0000
201.7486	0.0000	0.0000
184.4569	0.0000	0.0000
211.1915	0.0000	0.0000
201.4048	0.0000	0.0000
203.6421	0.0000	0.0000
205.7997	0.0000	0.0000
188.7988	0.0000	0.0000
213.6215	0.0000	0.0000
180.5661	0.0000	0.0000
236.6223	0.0000	0.0000
192.4645	0.0000	0.0000
201.4917	0.0000	0.0000
160.3991	0.0000	0.0000
214.1093	0.0000	0.0000
177.3790	0.0000	0.0000
219.6855	0.0000	0.0000
183.8152	0.0000	0.0000
218.3886	0.0000	0.0000
195.7980	0.0000	0.0000
185.5332	0.0000	0.0000
182.1239	0.0000	0.0000
182.9227	0.0000	0.0000
189.0492	0.0000	0.0000
216.2604	0.0000	0.0000
204.0595	0.0000	0.0000
202.2202	0.0000	0.0000
202.1045	0.0000	0.0000
230.8461	0.0000	0.0000
195.6551	0.0000	0.0000
202.1850	0.0000	0.0000
201.7131	0.0000	0.0000
218.2514	0.0000	0.0000
205.5025	0.0000	0.0000
184.2795	0.0000	0.0000
184.1375	0.0000	0.0000
189.8921	0.0000	0.0000
196.0687	0.0000	0.0000
202.4629	0.0000	0.0000
213.1684	0.0000	0.0000
206.2029	0.0000	0.0000
201.3093	0.0000	0.0000
185.1690	0.0000	0.0000
204.9333	0.0000	0.0000
187.3880	0.0000	0.0000
207.1785	0.0000	0.0000

211.7897	0.0000	0.0000
191.8790	0.0000	0.0000
200.6796	0.0000	0.0000
204.2462	0.0000	0.0000
195.7065	0.0000	0.0000
209.8857	0.0000	0.0000
181.1191	0.0000	0.0000
196.4528	0.0000	0.0000
208.1664	0.0000	0.0000
211.1237	0.0000	0.0000
201.6849	0.0000	0.0000
187.9286	0.0000	0.0000
205.6155	0.0000	0.0000
201.7792	0.0000	0.0000
199.6021	0.0000	0.0000
180.6848	0.0000	0.0000
195.1570	0.0000	0.0000
201.4395	0.0000	0.0000
218.8839	0.0000	0.0000
185.4339	0.0000	0.0000
214.8290	0.0000	0.0000
216.5781	0.0000	0.0000
223.8536	0.0000	0.0000
172.3513	0.0000	0.0000
191.1244	0.0000	0.0000
203.1254	0.0000	0.0000
196.2549	0.0000	0.0000
231.2545	0.0000	0.0000
180.3493	0.0000	0.0000
183.3510	0.0000	0.0000
184.2693	0.0000	0.0000
202.6777	0.0000	0.0000
240.1216	0.0000	0.0000
187.8354	0.0000	0.0000
192.8939	0.0000	0.0000
213.9422	0.0000	0.0000
164.3458	0.0000	0.0000
188.6577	0.0000	0.0000
194.2477	0.0000	0.0000
198.1285	0.0000	0.0000
201.9726	0.0000	0.0000
212.9099	0.0000	0.0000
202.2639	0.0000	0.0000
227.0920	0.0000	0.0000
215.0900	0.0000	0.0000
200.2319	0.0000	0.0000
224.7811	0.0000	0.0000
198.8882	0.0000	0.0000
178.6080	0.0000	0.0000
193.4991	0.0000	0.0000
203.4355	0.0000	0.0000
171.2078	0.0000	0.0000
176.5285	0.0000	0.0000
199.9636	0.0000	0.0000
191.8205	0.0000	0.0000
181.5106	0.0000	0.0000
189.0873	0.0000	0.0000
183.8233	0.0000	0.0000
189.9601	0.0000	0.0000
188.9727	0.0000	0.0000
187.9321	0.0000	0.0000

208.9787	0.0000	0.0000
195.7974	0.0000	0.0000
198.8547	0.0000	0.0000
201.8159	0.0000	0.0000
204.7468	0.0000	0.0000
215.5442	0.0000	0.0000
199.1486	0.0000	0.0000
189.2613	0.0000	0.0000
184.4142	0.0000	0.0000
211.0662	0.0000	0.0000
213.3145	0.0000	0.0000
194.8422	0.0000	0.0000
211.9202	0.0000	0.0000
175.8228	0.0000	0.0000
179.3916	0.0000	0.0000
162.1835	0.0000	0.0000
180.4053	0.0000	0.0000
211.5765	0.0000	0.0000
212.5326	0.0000	0.0000
160.3190	0.0000	0.0000
197.0831	0.0000	0.0000
179.5011	0.0000	0.0000
202.8793	0.0000	0.0000
201.1709	0.0000	0.0000
212.4077	0.0000	0.0000
178.8162	0.0000	0.0000
185.3336	0.0000	0.0000
162.4805	0.0000	0.0000
201.0194	0.0000	0.0000
202.5042	0.0000	0.0000
189.4247	0.0000	0.0000
180.4337	0.0000	0.0000
213.9312	0.0000	0.0000
200.4989	0.0000	0.0000
167.1647	0.0000	0.0000
187.7838	0.0000	0.0000
194.0363	0.0000	0.0000
188.0165	0.0000	0.0000
183.1500	0.0000	0.0000
168.2756	0.0000	0.0000
196.3141	0.0000	0.0000
205.6852	0.0000	0.0000
182.4767	0.0000	0.0000
193.6898	0.0000	0.0000
190.0841	0.0000	0.0000
150.8188	0.0000	0.0000
181.5491	0.0000	0.0000
196.7962	0.0000	0.0000
186.9899	0.0000	0.0000
165.7074	0.0000	0.0000
179.5707	0.0000	0.0000
192.1323	0.0000	0.0000
174.3822	0.0000	0.0000
182.3257	0.0000	0.0000
185.7550	0.0000	0.0000
185.8132	0.0000	0.0000
189.4138	0.0000	0.0000
176.3218	0.0000	0.0000
173.4258	0.0000	0.0000
199.2752	0.0000	0.0000
187.0388	0.0000	0.0000

188.0769	0.0000	0.0000
203.7531	0.0000	0.0000
164.2897	0.0000	0.0000
183.0872	0.0000	0.0000
216.6824	0.0000	0.0000
202.8048	0.0000	0.0000
181.8510	0.0000	0.0000
183.6148	0.0000	0.0000
201.9126	0.0000	0.0000
199.1828	0.0000	0.0000
189.9544	0.0000	0.0000
171.7693	0.0000	0.0000
188.2172	0.0000	0.0000
195.1866	0.0000	0.0000
192.0623	0.0000	0.0000
174.2128	0.0000	0.0000
180.1432	0.0000	0.0000
189.4404	0.0000	0.0000
167.8862	0.0000	0.0000
194.1814	0.0000	0.0000
183.9577	0.0000	0.0000
179.6669	0.0000	0.0000
206.3682	0.0000	0.0000
179.6880	0.0000	0.0000
200.6566	0.0000	0.0000
179.9267	0.0000	0.0000
169.1731	0.0000	0.0000
185.8069	0.0000	0.0000
204.1062	0.0000	0.0000
181.1420	0.0000	0.0000
182.2756	0.0000	0.0000
182.3483	0.0000	0.0000
164.0161	0.0000	0.0000
198.0361	0.0000	0.0000
190.5669	0.0000	0.0000
191.9820	0.0000	0.0000
190.8637	0.0000	0.0000
184.6220	0.0000	0.0000
184.3525	0.0000	0.0000
214.7314	0.0000	0.0000
189.1084	0.0000	0.0000
178.1355	0.0000	0.0000
204.1827	0.0000	0.0000
197.3578	0.0000	0.0000
176.4385	0.0000	0.0000
180.9515	0.0000	0.0000
192.8027	0.0000	0.0000
191.0530	0.0000	0.0000
174.1945	0.0000	0.0000
174.4078	0.0000	0.0000
180.0298	0.0000	0.0000
198.6010	0.0000	0.0000
191.6918	0.0000	0.0000
191.8934	0.0000	0.0000
223.5596	0.0000	0.0000
200.3669	0.0000	0.0000
197.1686	0.0000	0.0000
203.5546	0.0000	0.0000
190.7817	0.0000	0.0000
174.6375	0.0000	0.0000
173.4880	0.0000	0.0000

168.0882	0.0000	0.0000
198.3484	0.0000	0.0000
176.4735	0.0000	0.0000
190.0548	0.0000	0.0000
185.0285	0.0000	0.0000
183.5018	0.0000	0.0000
204.0886	0.0000	0.0000
225.0182	0.0000	0.0000
185.6143	0.0000	0.0000
185.8533	0.0000	0.0000
172.3121	0.0000	0.0000
179.7354	0.0000	0.0000
213.3412	0.0000	0.0000
190.7680	0.0000	0.0000
183.2011	0.0000	0.0000
183.2260	0.0000	0.0000
174.7845	0.0000	0.0000
183.6697	0.0000	0.0000
226.5354	0.0000	0.0000
166.1837	0.0000	0.0000
170.7894	0.0000	0.0000
211.6149	0.0000	0.0000
180.8778	0.0000	0.0000
165.3496	0.0000	0.0000
198.2251	0.0000	0.0000
190.2268	0.0000	0.0000
183.8026	0.0000	0.0000
181.8841	0.0000	0.0000
192.0803	0.0000	0.0000
194.8087	0.0000	0.0000
183.9870	0.0000	0.0000
189.4468	0.0000	0.0000
175.3881	0.0000	0.0000
169.8842	0.0000	0.0000
192.2538	0.0000	0.0000
198.9066	0.0000	0.0000
190.5085	0.0000	0.0000
174.9226	0.0000	0.0000
167.9222	0.0000	0.0000
176.2698	0.0000	0.0000
184.5689	0.0000	0.0000
196.8007	0.0000	0.0000
195.3445	0.0000	0.0000
168.0816	0.0000	0.0000
176.1015	0.0000	0.0000
170.5228	0.0000	0.0000
165.8883	0.0000	0.0000
183.0841	0.0000	0.0000
182.8158	0.0000	0.0000
179.7526	0.0000	0.0000
175.6357	0.0000	0.0000
193.6456	0.0000	0.0000
190.2049	0.0000	0.0000
186.3512	0.0000	0.0000
183.7774	0.0000	0.0000
170.1575	0.0000	0.0000
174.1844	0.0000	0.0000
216.0709	0.0000	0.0000
208.0257	0.0000	0.0000
181.1217	0.0000	0.0000
172.5015	0.0000	0.0000

217.9617	0.0000	0.0000
191.1982	0.0000	0.0000
178.0087	0.0000	0.0000
214.6188	0.0000	0.0000
185.5792	0.0000	0.0000
171.9819	0.0000	0.0000
182.4835	0.0000	0.0000
188.5889	0.0000	0.0000
230.6022	0.0000	0.0000
177.0877	0.0000	0.0000
163.1346	0.0000	0.0000
169.5132	0.0000	0.0000
179.4496	0.0000	0.0000
213.3171	0.0000	0.0000
207.0879	0.0000	0.0000
158.7969	0.0000	0.0000
201.2836	0.0000	0.0000
226.7397	0.0000	0.0000
178.9601	0.0000	0.0000
207.1409	0.0000	0.0000
213.4123	0.0000	0.0000
178.0497	0.0000	0.0000
190.7227	0.0000	0.0000
182.6276	0.0000	0.0000
174.2040	0.0000	0.0000
200.7323	0.0000	0.0000
188.8150	0.0000	0.0000
182.8677	0.0000	0.0000
211.7224	0.0000	0.0000
195.1798	0.0000	0.0000
167.3892	0.0000	0.0000
187.0946	0.0000	0.0000
204.1237	0.0000	0.0000
212.9201	0.0000	0.0000
196.8233	0.0000	0.0000
194.9342	0.0000	0.0000
187.9277	0.0000	0.0000
198.4671	0.0000	0.0000
207.2407	0.0000	0.0000
202.4435	0.0000	0.0000
200.6052	0.0000	4.6004
192.5260	0.0000	4.7012
189.0719	0.0000	4.8053
223.0753	0.0000	4.9129
210.4535	0.0000	5.0242
171.4001	0.0000	5.1392
185.7072	0.0000	5.2582
226.5575	0.0000	5.3813
213.5990	0.0000	5.5088
175.9628	0.0000	5.6409
179.5736	0.0000	5.7777
191.8052	0.0000	5.9196
190.2998	0.0000	6.0667
202.4116	0.0000	6.2193
189.5961	0.0000	6.3777
220.8065	0.0000	6.5422
219.2469	0.0000	6.7130
201.7834	0.0000	6.8906
165.7622	0.0000	7.0753
192.5853	0.0000	7.2675
222.4670	0.0000	7.4675

199.6909	0.0000	7.6758
189.2115	0.0000	7.8929
215.3589	0.0000	8.1192
199.8156	0.0000	8.3553
175.4497	0.0000	8.6018
191.3985	0.0000	8.8592
218.9380	0.0000	9.1282
210.9091	0.0000	9.4096
210.2076	0.0000	9.7040
174.7592	0.0000	10.0122
222.9713	0.0000	10.3352
205.8128	0.0000	10.6739
195.5636	0.0000	11.0293
204.1725	0.0000	11.4026
235.6110	0.0000	11.7948
259.0298	0.0000	12.2073
227.6124	0.0000	12.6416
186.4506	0.0000	13.0991
193.2827	0.0000	13.5815
240.6666	0.0000	14.0906
239.1499	0.0000	23.2354
219.2013	0.0000	23.9844
229.0976	0.0000	24.7724
222.7242	0.0000	25.6024
192.2539	0.0000	26.4776
198.1947	0.0000	27.4016
256.2218	0.0000	28.3785
262.6262	0.0000	29.4130
211.3075	0.0000	30.5103
214.4717	0.0000	31.6769
255.7699	0.0000	32.9198
256.8532	0.0000	34.2478
232.9009	0.0000	35.6715
243.9677	0.0000	37.2036
249.7023	0.0000	38.8595
232.5048	0.0000	40.6586
262.2327	0.0000	42.6242
286.2772	0.0000	44.7857
253.4068	0.0000	47.1787
245.7733	0.0000	49.8470
282.9333	0.0000	52.8439
291.8026	0.0000	56.2332
271.2354	0.0000	60.0918
262.0527	0.0000	64.5097
314.4861	0.0000	69.5916
326.5531	0.0000	75.4576
322.5995	0.0000	82.2424
332.8202	0.0000	90.0960
345.1134	0.0000	99.1798
352.0318	0.0000	109.6646
356.8441	0.0000	121.7262
386.1942	0.0000	135.5386
406.9033	0.0000	151.2708
369.8388	0.0000	169.0731
395.8680	0.0000	189.0720
466.6238	0.0000	211.3570
456.0396	0.0000	235.9761
474.4927	0.0000	262.9164
546.6544	0.0000	292.0969
479.3290	0.0000	323.3550
494.1225	0.0000	356.4301

579.3924	0.0000	390.9541
579.4772	0.0000	426.4227
544.4410	0.0000	462.1827
571.1315	0.0000	497.4134
642.3434	0.0000	531.1175
596.4629	0.0000	562.1427
557.2676	0.0000	589.2198
700.6084	0.0000	611.0661
691.0452	0.0000	626.5233
647.1057	0.0000	634.7211
615.2274	0.0000	635.2242
676.8471	0.0000	628.1111
684.7438	0.0000	613.9631
630.2484	0.0000	593.7625
628.3188	0.0000	568.7398
663.3077	0.0000	540.2078
676.5278	0.0000	509.4408
595.4837	0.0000	477.5889
603.0661	0.0000	445.6424
597.0087	0.0000	414.4195
560.2509	0.0000	384.5891
591.6600	0.0000	356.6840
634.1977	0.0000	331.1240
588.6017	0.0000	308.2372
560.4811	0.0000	288.2726
605.1312	0.0000	271.4241
581.5687	0.0000	257.8391
560.4299	0.0000	247.6326
542.4083	0.0000	240.8999
556.5278	0.0000	237.7242
566.4728	0.0000	238.1877
578.6613	0.0000	242.3756
591.5084	0.0000	250.3797
616.5714	0.0000	262.2979
644.4842	0.0000	278.2346
671.3218	0.0000	298.2901
656.3163	0.0000	322.5553
622.2375	0.0000	351.0993
630.0777	0.0000	383.9547
710.2158	0.0000	421.1097
770.9754	0.0000	462.4813
766.1968	0.0000	507.9046
787.4515	0.0000	557.1123
842.9379	0.0000	609.7110
889.2047	0.0000	665.1699
859.8543	0.0000	722.7773
852.8431	0.0000	781.6241
894.3171	0.0000	840.5693
945.2695	0.0000	898.2320
949.9607	0.0000	952.9671
1010.1179	0.0000	1002.9085
1033.1426	0.0000	1046.0460
1013.4324	0.0000	1080.3671
1078.7255	0.0000	1104.0658
1079.8439	0.0000	1115.7611
1105.4644	0.0000	1114.7098
1064.2865	0.0000	1100.9259
1101.7985	0.0000	1075.1782
1045.7025	0.0000	1038.8588
1058.3689	0.0000	993.7831
1059.8914	0.0000	941.9557

950.3955	0.0000	885.3705
911.9133	0.0000	825.8743
877.5310	0.0000	765.0741
886.5057	0.0000	704.3293
886.6865	0.0000	644.7430
818.9419	0.0000	587.1856
733.5236	0.0000	532.3254
670.3194	0.0000	480.6428
691.2343	0.0000	432.4738
647.1393	0.0000	388.0184
640.1641	0.0000	347.3634
493.0049	0.0000	310.5012
513.5397	0.0000	277.3390
532.7432	0.0000	247.7259
505.9333	0.0000	221.4598
438.5251	0.0000	198.3044
376.1689	0.0000	177.9969
394.9404	0.0000	160.2674
406.7083	0.0000	144.8428
372.0732	0.0000	131.4567
316.1201	0.0000	119.8563
320.9537	0.0000	109.8039
321.1854	0.0000	101.0846
302.3663	0.0000	93.5045
301.3844	0.0000	86.8924
310.2343	0.0000	81.0994
304.0068	0.0000	75.9964
275.8669	0.0000	71.4747
265.9247	0.0000	67.4423
263.8448	0.0000	63.8227
240.2955	0.0000	60.5525
235.6507	0.0000	57.5791
240.0528	0.0000	54.8598
220.3178	0.0000	52.3595
226.4179	0.0000	50.0496
226.1093	0.0000	47.9067
205.6763	0.0000	45.9110
209.0766	0.0000	44.0466
256.1583	0.0000	42.3001
235.9528	0.0000	40.6603
205.8023	0.0000	34.5431
191.5075	0.0000	33.1855
214.0690	0.0000	31.9063
235.8088	0.0000	30.6993
217.4699	0.0000	29.5589
191.7052	0.0000	28.4802
191.1834	0.0000	27.4587
201.1506	0.0000	26.4905
233.3975	0.0000	25.5719
203.5930	0.0000	24.6997
192.5040	0.0000	23.8707
183.8652	0.0000	23.0822
191.9502	0.0000	22.3316
216.5175	0.0000	21.6166
222.0143	0.0000	20.9350
219.2183	0.0000	20.2846
200.0383	0.0000	19.6638
165.7708	0.0000	19.0707
179.9936	0.0000	18.5038
213.7418	0.0000	17.9615
190.4617	0.0000	17.4424

173.0372	0.0000	16.9453
183.3993	0.0000	16.4689
175.4785	0.0000	16.0121
199.6169	0.0000	15.5739
194.2117	0.0000	15.1533
193.5598	0.0000	14.7493
162.0380	0.0000	14.3612
176.2169	0.0000	13.9880
191.4878	0.0000	13.6291
189.1042	0.0000	13.2837
173.3735	0.0000	12.9512
170.0699	0.0000	12.6309
194.4632	0.0000	12.3222
190.8312	0.0000	12.0247
179.5651	0.0000	11.7377
162.8764	0.0000	11.4608
164.3140	0.0000	11.1935
176.2880	0.0000	10.9354
198.6585	0.0000	10.6861
179.4852	0.0000	10.4451
156.5852	0.0000	10.2122
176.7223	0.0000	9.9869
172.2079	0.0000	9.7690
155.3402	0.0000	9.5580
175.9538	0.0000	9.3538
206.5058	0.0000	9.1560
184.4424	0.0000	8.9644
150.3914	0.0000	8.7787
162.8047	0.0000	8.5987
179.0383	0.0000	0.0000
175.0776	0.0000	0.0000
183.3490	0.0000	0.0000
191.4037	0.0000	0.0000
189.6278	0.0000	0.0000
173.0730	0.0000	0.0000
153.6288	0.0000	0.0000
147.4360	0.0000	0.0000
163.3337	0.0000	0.0000
176.8914	0.0000	0.0000
203.5521	0.0000	0.0000
159.1975	0.0000	0.0000
173.9070	0.0000	0.0000
177.5939	0.0000	0.0000
169.5281	0.0000	0.0000
166.3529	0.0000	0.0000
187.1768	0.0000	0.0000
135.2859	0.0000	0.0000
154.9196	0.0000	0.0000
175.4580	0.0000	0.0000
163.8089	0.0000	0.0000
145.7401	0.0000	0.0000
181.7364	0.0000	0.0000
175.6937	0.0000	0.0000
185.4733	0.0000	0.0000
170.4275	0.0000	0.0000
138.4951	0.0000	0.0000
146.4856	0.0000	0.0000
168.4863	0.0000	0.0000
171.0439	0.0000	0.0000
171.7563	0.0000	0.0000
156.9772	0.0000	0.0000

155.0075	0.0000	0.0000
194.2475	0.0000	0.0000
152.8023	0.0000	0.0000
148.6322	0.0000	0.0000
158.2308	0.0000	0.0000
176.8481	0.0000	0.0000
165.5169	0.0000	0.0000
137.1785	0.0000	0.0000
147.3541	0.0000	0.0000
186.6351	0.0000	0.0000
184.8206	0.0000	0.0000
169.9045	0.0000	0.0000
155.3803	0.0000	0.0000
152.4724	0.0000	0.0000
151.1962	0.0000	0.0000
170.1825	0.0000	0.0000
171.7401	0.0000	0.0000
160.5023	0.0000	0.0000
150.1757	0.0000	0.0000
165.6551	0.0000	0.0000
155.2504	0.0000	0.0000
155.9080	0.0000	0.0000
174.4908	0.0000	0.0000
172.9904	0.0000	0.0000
160.7475	0.0000	0.0000
161.0911	0.0000	0.0000
138.1818	0.0000	0.0000
159.4144	0.0000	0.0000
178.9901	0.0000	0.0000
184.6834	0.0000	0.0000
173.9589	0.0000	0.0000
166.0183	0.0000	0.0000
150.0181	0.0000	0.0000
142.9955	0.0000	0.0000
154.6749	0.0000	0.0000
154.1421	0.0000	0.0000
156.1681	0.0000	0.0000
176.8229	0.0000	0.0000
165.5512	0.0000	0.0000
156.0185	0.0000	0.0000
143.1569	0.0000	0.0000
163.5553	0.0000	0.0000
176.2615	0.0000	0.0000
164.8973	0.0000	0.0000
133.6653	0.0000	0.0000
130.9687	0.0000	0.0000
146.3460	0.0000	0.0000
174.6913	0.0000	0.0000
170.9859	0.0000	0.0000
127.9645	0.0000	0.0000
134.5956	0.0000	0.0000
165.3218	0.0000	0.0000
186.7005	0.0000	0.0000
155.0312	0.0000	0.0000
182.1780	0.0000	0.0000
162.0154	0.0000	0.0000
167.1123	0.0000	0.0000
134.0872	0.0000	0.0000
140.4190	0.0000	0.0000
136.9975	0.0000	0.0000
160.1869	0.0000	0.0000

