

Supporting Information

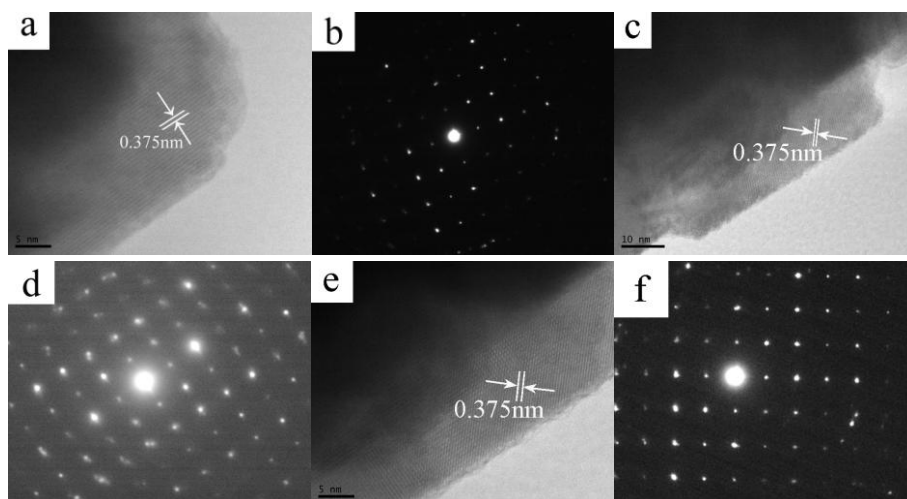


Figure S1. HRTEM images (a, c, e) and SEAD patterns (b, d, f) of FeWO_4 microcrystals prepared at 200 °C for 8 h with concentration of HMT $0.01 \text{ mol}\cdot\text{L}^{-1}$, $0.1 \text{ mol}\cdot\text{L}^{-1}$, $0.2 \text{ mol}\cdot\text{L}^{-1}$, respectively.

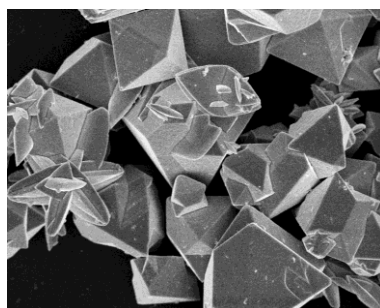


Figure S2. SEM images of the as-prepared samples at 200 °C for 8 h in presence of $[\text{FeCl}_2] = 0.02 \text{ mol}\cdot\text{L}^{-1}$, $[\text{Na}_2\text{WO}_4] = 0.02 \text{ mol}\cdot\text{L}^{-1}$ and $[\text{Na}_2\text{EDTA}] = 0.03 \text{ mol}\cdot\text{L}^{-1}$.