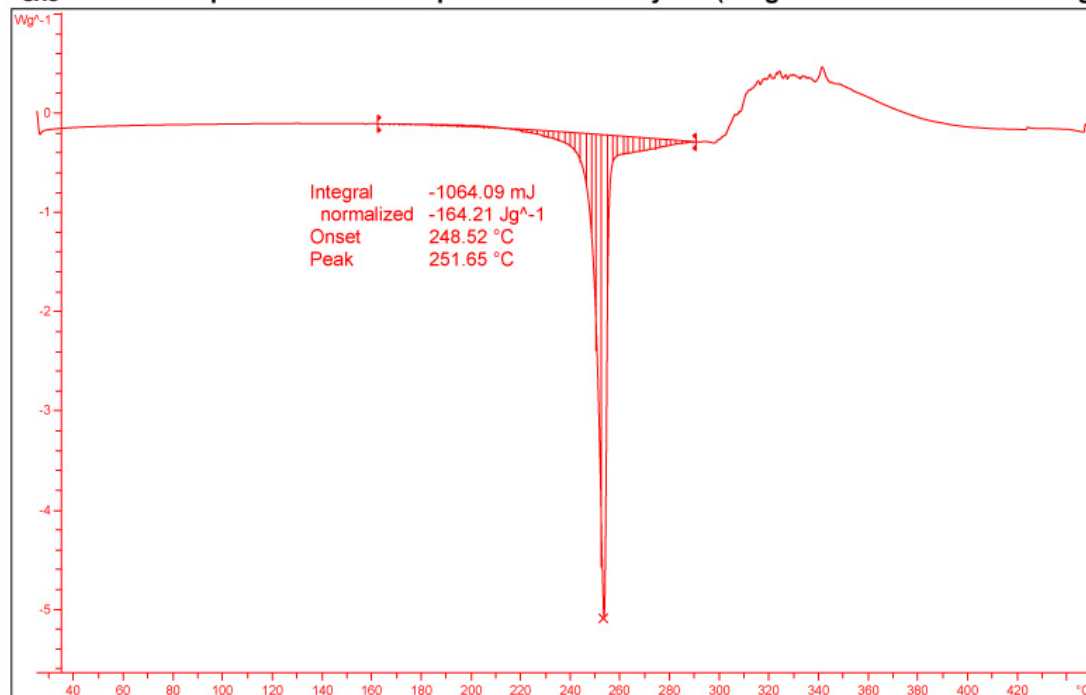


**Table A.** Crystallographic data for the cocrystal **1a**

	<b>1a</b>
Formula	2(C <sub>14</sub> H <sub>18</sub> N <sub>4</sub> O <sub>3</sub> ):1(C <sub>8</sub> H <sub>7</sub> N <sub>1</sub> O <sub>4</sub> )
Formula Wt.	761.79
Crystal habit	Blocks
Crystal color	Colorless
Crystal system	Monoclinic
Space group	<i>P</i> 2 <sub>1</sub> / <i>c</i>
<i>a</i> (Å)	9.198 (1)
<i>b</i> (Å)	8.255 (1)
<i>c</i> (Å)	23.778 (4)
α (deg)	90.00
β (deg)	96.19 (1)
γ (deg)	90.00
<i>V</i> (Å <sup>3</sup> )	1794.94(4)
<i>Z</i>	2
<i>D</i> <sub>calc</sub> (g cm <sup>-3</sup> )	1.410
<i>T</i> (K)	180 (2)
λ (Mo-Kα)	0.71073
μ (mm <sup>-1</sup> )	0.105
2θ range(deg)	58.24
Limiting indices	-12 ≤ <i>h</i> ≤ 12 -8 ≤ <i>k</i> ≤ 11 -31 ≤ <i>l</i> ≤ 32
<i>F</i> (000)	804
No. of Reflns. Measured	19626
No. Unique Reflns.[ <i>R</i> ( <i>int</i> )]	4783
No. of Reflns. used	3511
No. of Parameters	256
GOF on <i>F</i> <sup>2</sup>	1.064
<i>R</i> <sub><i>I</i></sub> [ <i>I</i> > 2σ( <i>I</i> )]	0.0561
<i>wR</i> <sub>2</sub>	0.1334
Final diff. Fourier map (e <sup>-</sup> ·Å <sup>-3</sup> ) max, min	0.355, -0.260

**Trimethoprim + 2-aminoterephthalic acid cocrystal (weight taken for DSC = 6.48mg)**



**Trimethoprim + 2-aminoterephthalic acid cocrystal (weight taken for TGA = 8.72 mg)**

