

Electronic Supplementary Information (ESI)

PREPARATION AND CHARACTERIZATION OF CARPROFEN CO-CRYSTALS

Giovanna Bruni^{a,*}, Mariarosa Maietta^a, Vittorio Berbenni^a, Marcella Bini^a, Stefania Ferrari^a,
Doretta Capsoni^a, Massimo Boiocchi^b, Chiara Milanese^a, Amedeo Marini^a

^a C.S.G.I. - Department of Chemistry, Physico-Chemical Section, University of Pavia, viale Taramelli 16, 27100 Pavia, Italy

^b Centro Grandi Strumenti, University of Pavia, via Bassi, 27100 Pavia, Italy

Content

Figure S1 – XRPD patterns of: *F2* (green line), binary system *CF2et11* (black line) and *C* (red line).

Figure S2 – XRPD patterns of: *F3* (green line), binary system *CF3et11* (black line) and *C* (red line).

Figure S3 - DSC traces of the systems *CF2et11* (a), *CF3et11* (b).

Figure S4 – XRPD pattern of *CF1acet115* co-crystal.

Figure S5 – SEM micrograph (a) and chlorine map (b) for the *CF1acet115* co-crystal

Figure S6 – DSC curve of 1:1.5 molar ratio of carprofen and 4,4' dipyridyl co-crystal.

Figure S1

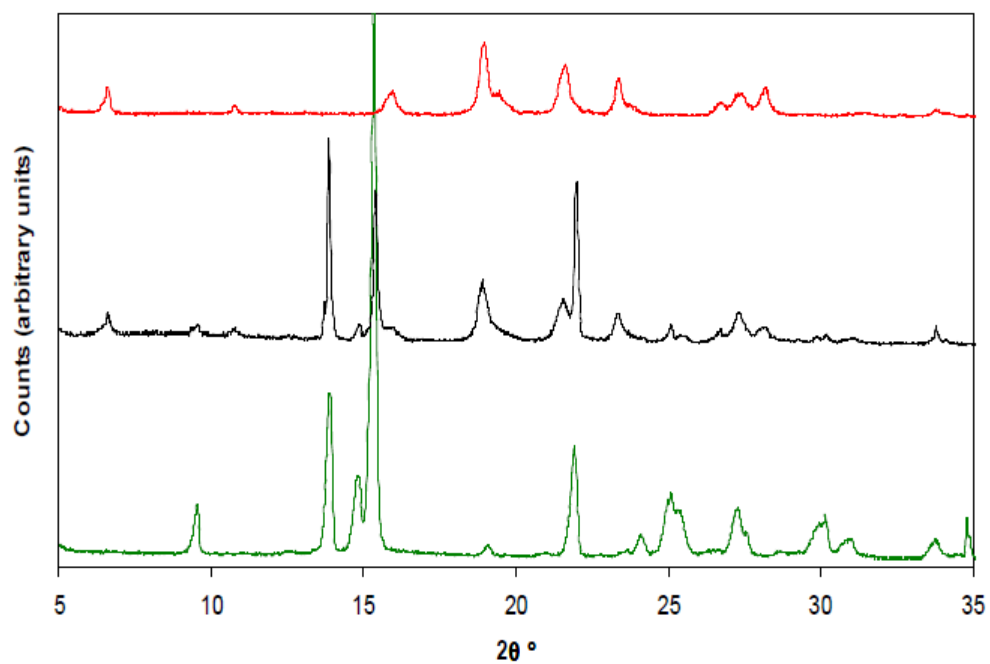


Figure S2

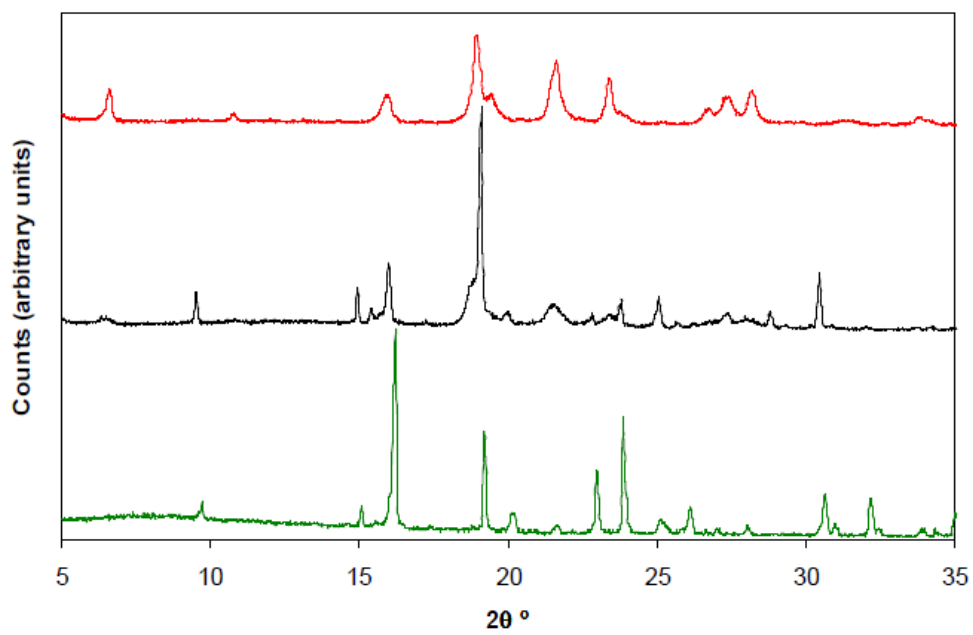


Figure S3

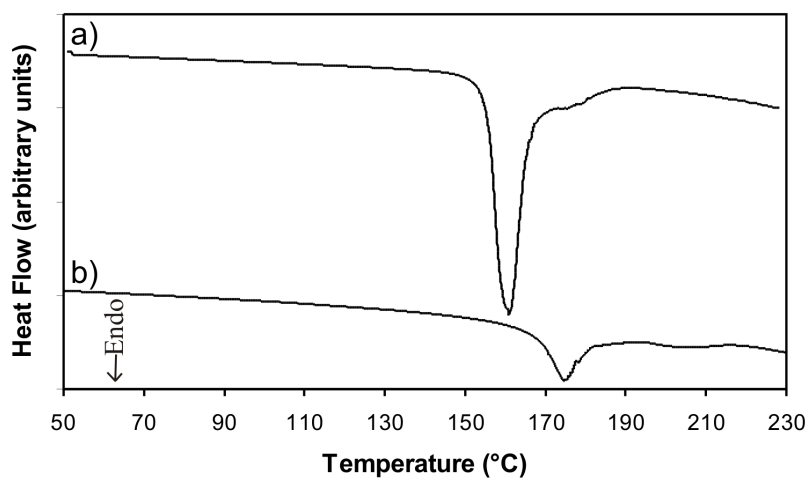


Figure S4

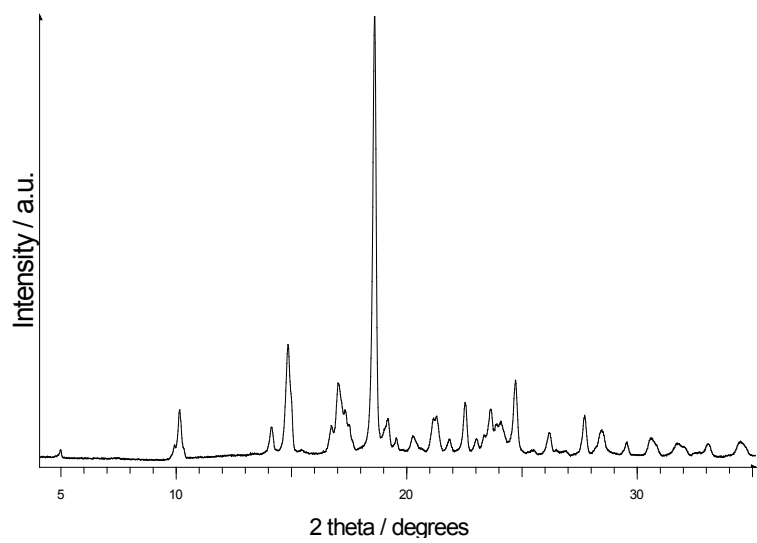


Figure S5

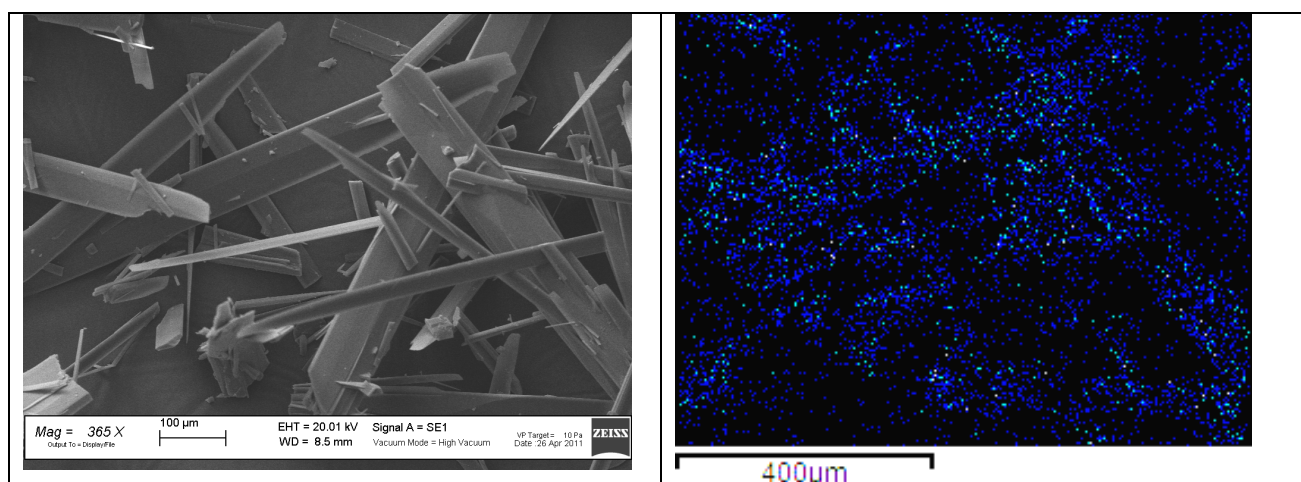


Figure S6

