

Supporting data

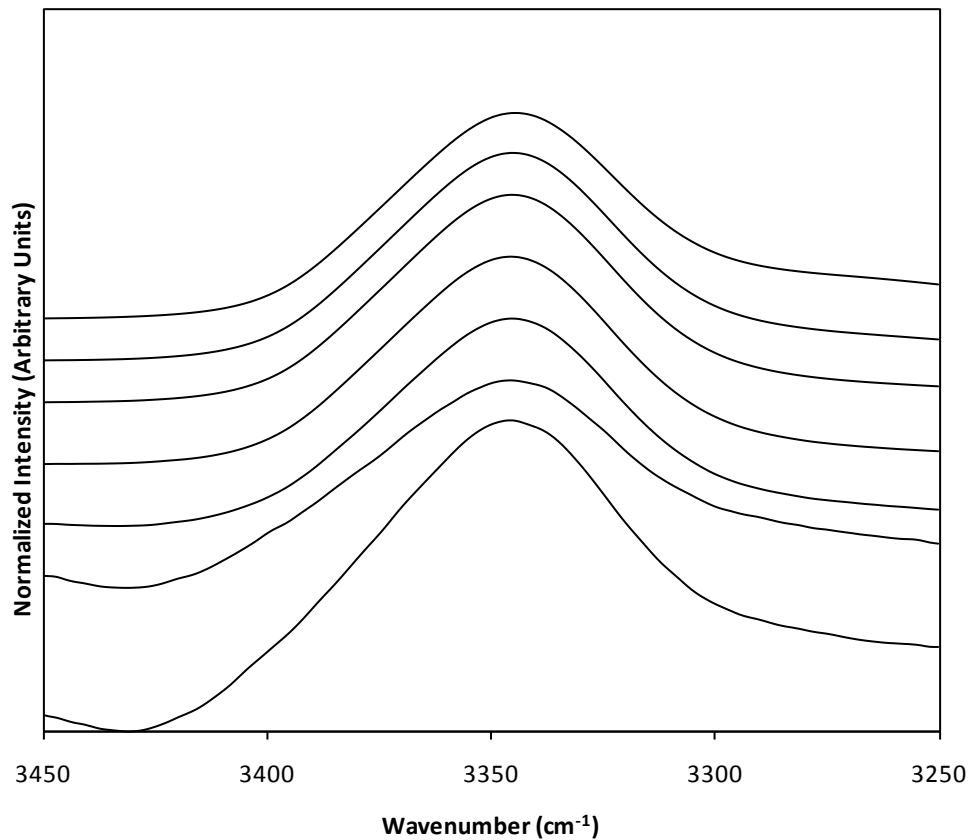


Figure S 1: NH peak position of nimesulide as a function of solution concentration (1, 2.5, 5, 10, 25, 50, 100 mg/ml in dichloromethane– bottom to top).

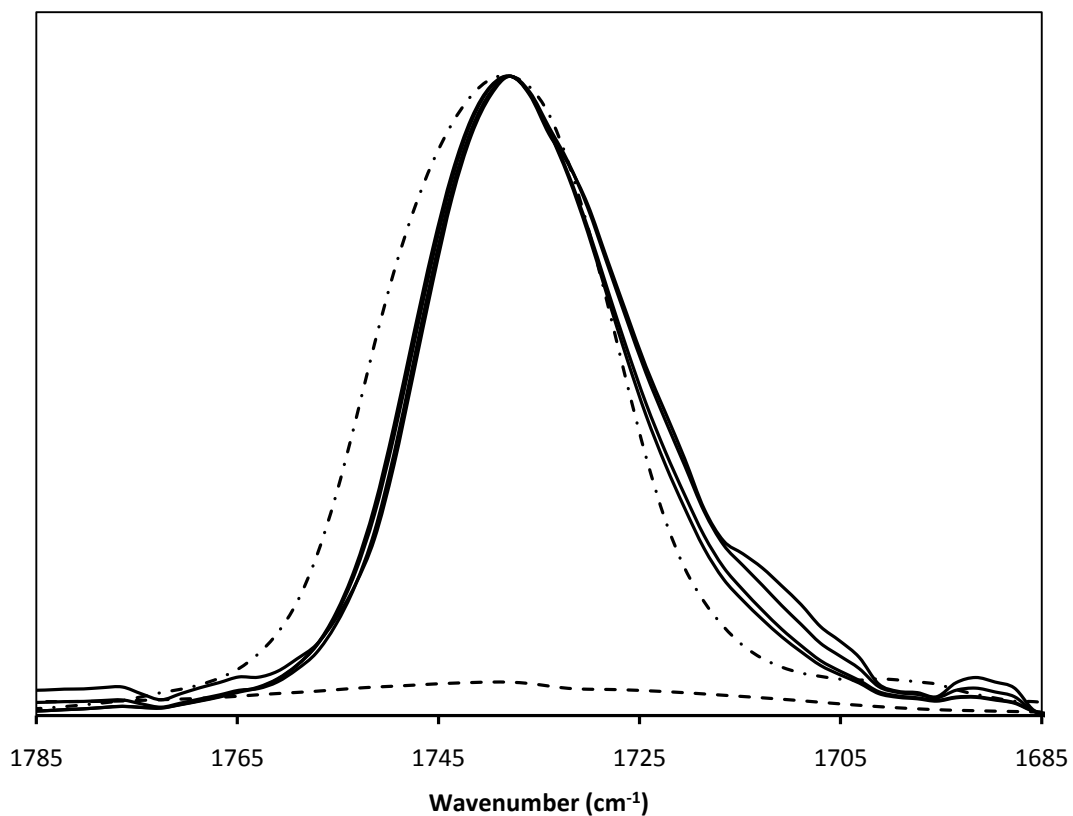


Figure S 2: IR spectra showing acetate region of pure PVAc (dash dotted lines) and PVAc – Nimesulide systems containing 20, 30, 40 and 50wt% polymer (solid lines from left to right). Dash lines at the bottom indicated the same wave number region for nimesulide.

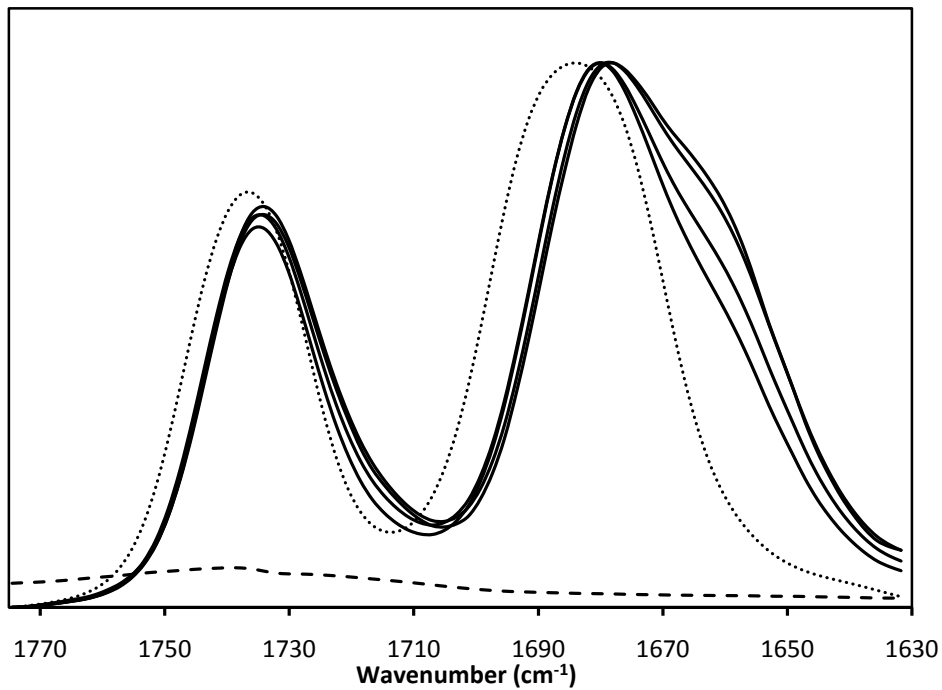


Figure S 3: IR spectra showing acetate(left) and carbonyl peaks (right) of pure PVP/VA (dotted lines) and PVP/VA –Nimesulide systems containing 20, 30, 40 and 50wt% polymer (solid lines from left to right). Dash lines at the bottom indicated the same wave number region for nimesulide.

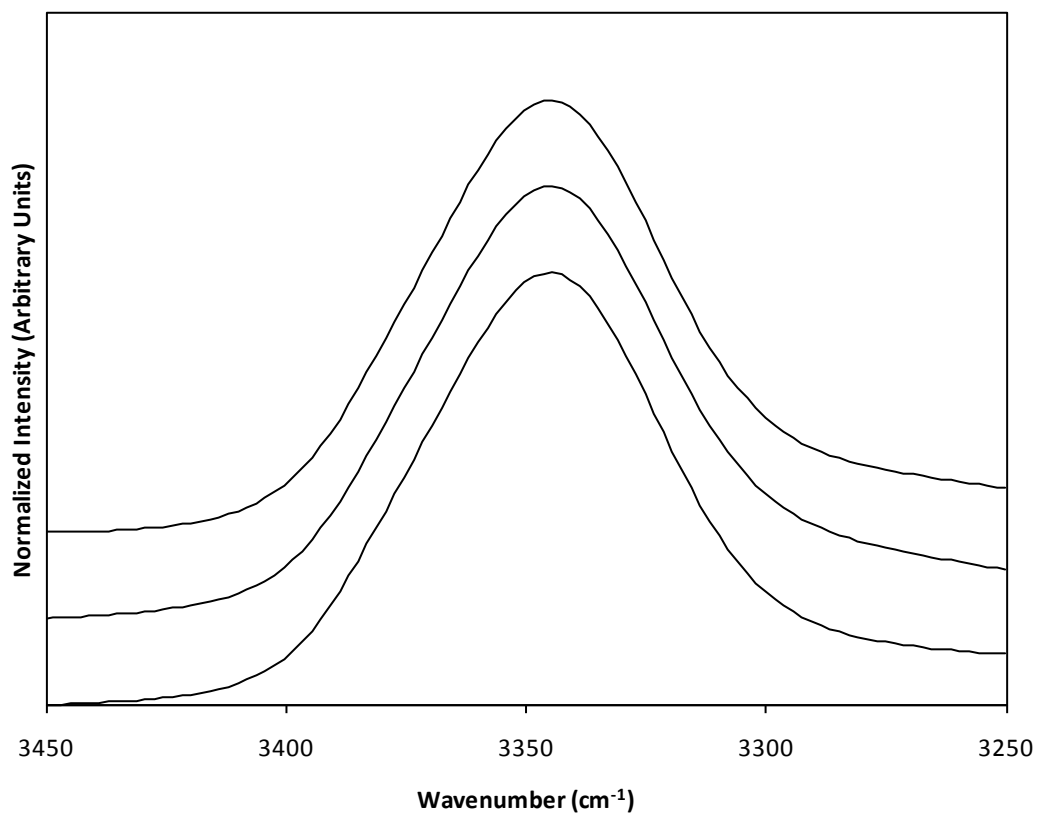


Figure S 4: NH peak position of nimesulide in dichloromethane solution (50 mg/ml) and the peak position (of 50 mg/ml dichloromethane solution) upon addition of acetic acid and 1-ethyl-2 pyrrolidone (1:1 molar ratio to nimesulide) – bottom to top.