

## Electronic Supplementary Information (ESI) for CrystEngComm

### Porous SnO<sub>2</sub> nanoflowers derived from tin sulfides precursors as high performance gas sensors

Junfeng Chao, Xin Xu, Hongtao Huang, Zhe Liu, Bo Liang, Xianfu Wang, Sihan Ran,  
Di Chen,\* and Guozhen Shen\*

Wuhan National Laboratory for Optoelectronics (WNLO) and College of Optoelectronic Science and Engineering, Huazhong University of Science and Technology (HUST), Wuhan, 430074, China.

\*E-mail: gzshen@mail.hust.edu.cn. dichen@mail.hust.edu.cn Fax: 86-27-87792225.

Fig. S1 SEM image of the precursors: (a) SnS and (b) SnS<sub>2</sub> nanoflowers.

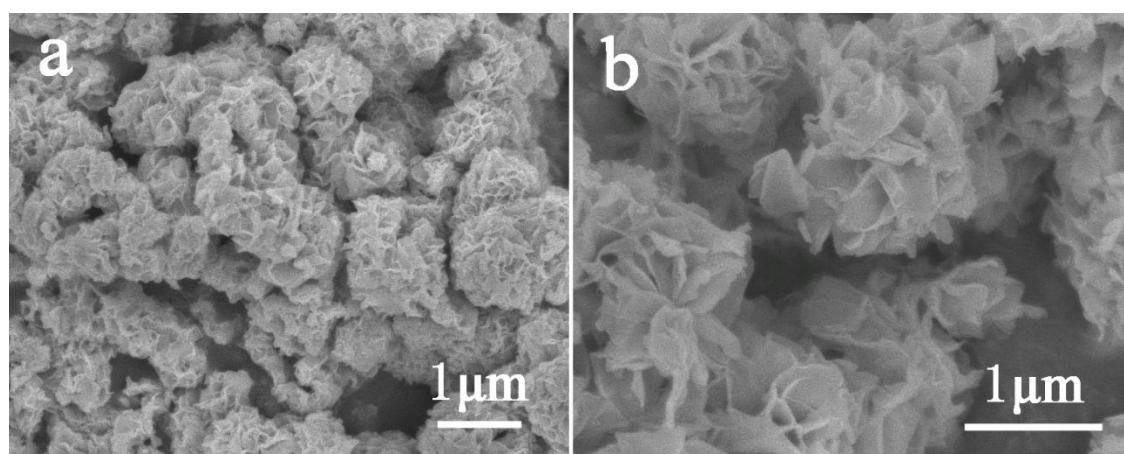


Fig. S2 (a) XPS survey spectrum of SnO<sub>2</sub> from SnS precursor.

