

Controllable synthesis and thermoelectric transport properties of binary-phased PbTe/PbSe nanocrystals†

Rencheng Jin, Gang Chen,* Jian Pei, Jingxue Sun, and Qun Wang

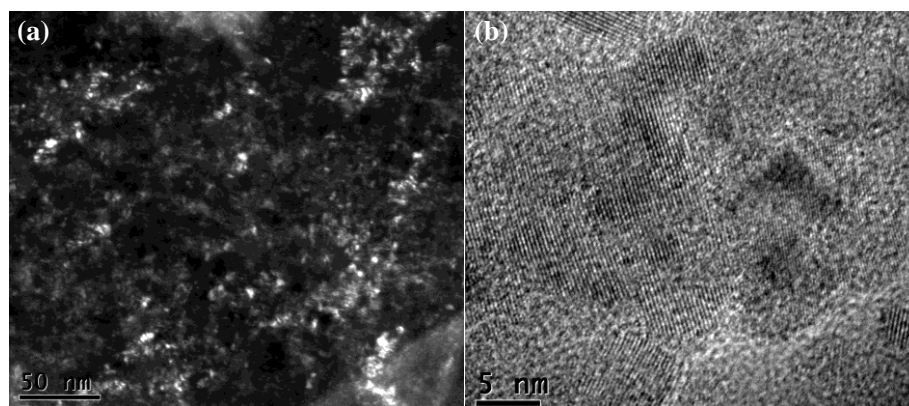


Fig. S1 (a) Dark field image for the single PbTe/PbSe nanoplate, (b) corresponding HRTEM image taken from the corner of the nanoplate.