

Supporting Information

Two Metal-Organic Frameworks with Unique High-Connected Binodal Network Topologies: Synthesis, Structures, and Catalytic Properties

Guang-hua Cui^{*a}, Cui Hong He^a, Cui Huan Jiao^a, Jian-Chen Geng^a, Vladislav A. Blatov^b

Supporting Information Fig. S1—Fig. S6

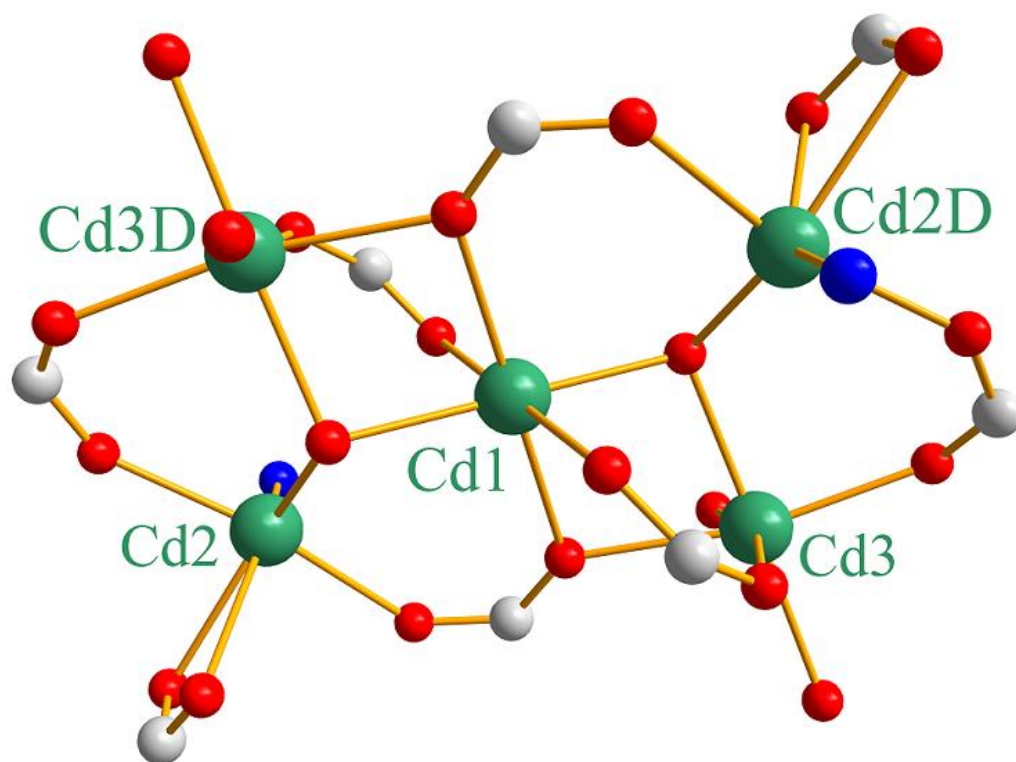


Fig. S1. The Cd pentamers ($[\text{Cd}_5(\text{COO})_8(\text{OH})_2]$) SBUs in **1**. symmetry code D: $-x, -y+1, -z+1$

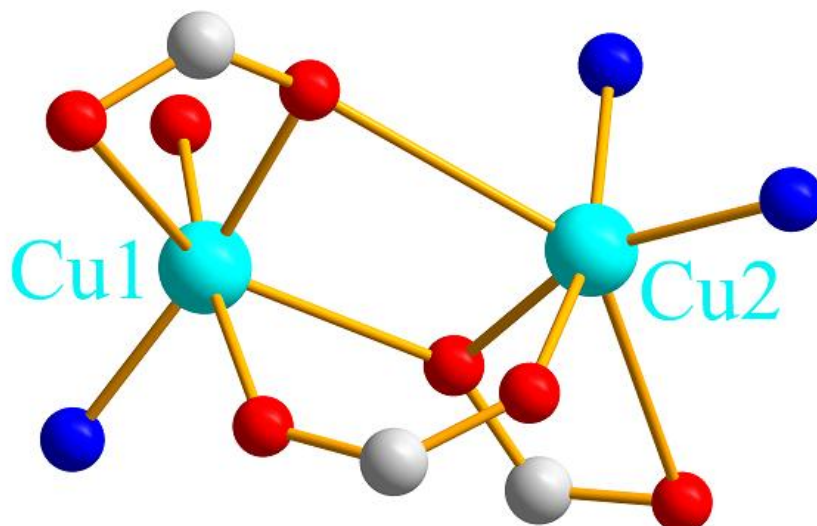


Fig. S2. The Cu dimer SBUs $[\text{Cu}_2(\text{COO})_4]$ in **2**. symmetry code D: $-x, -y+1, -z+1$

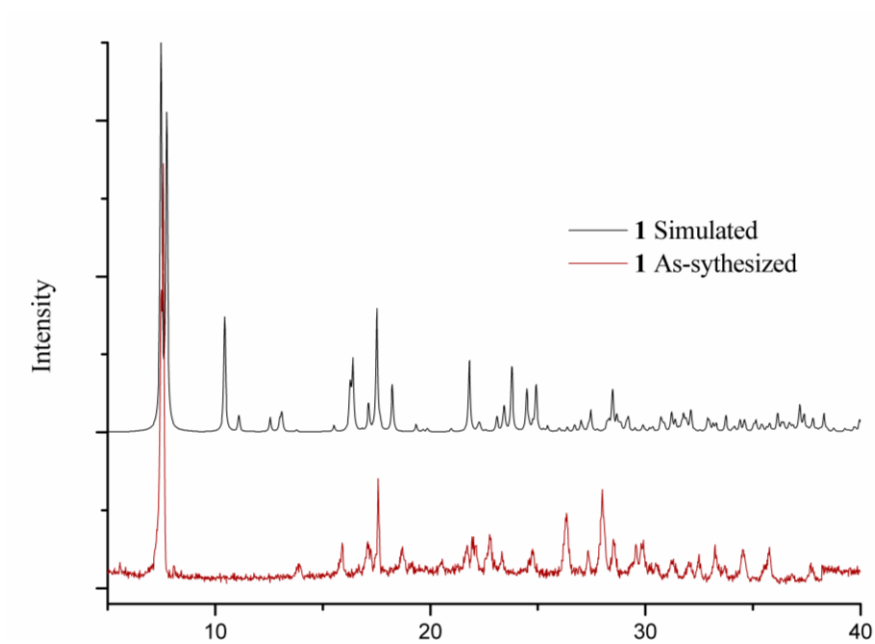


Fig. S3 XRPD pattern of the crystal **1** and their calculated

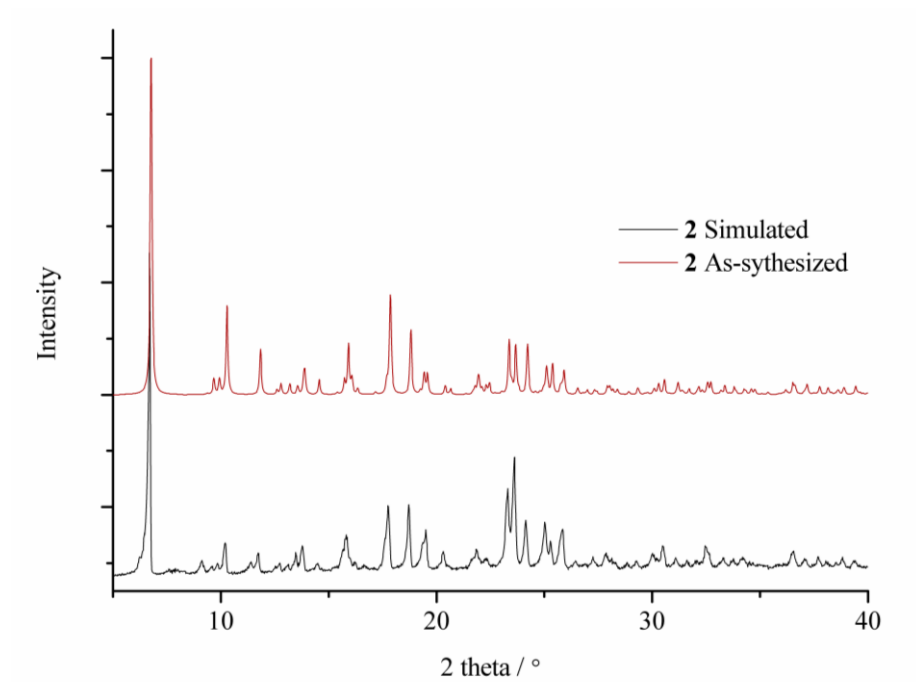


Fig. S4 XRPD pattern of the crystal **2** and their calculated

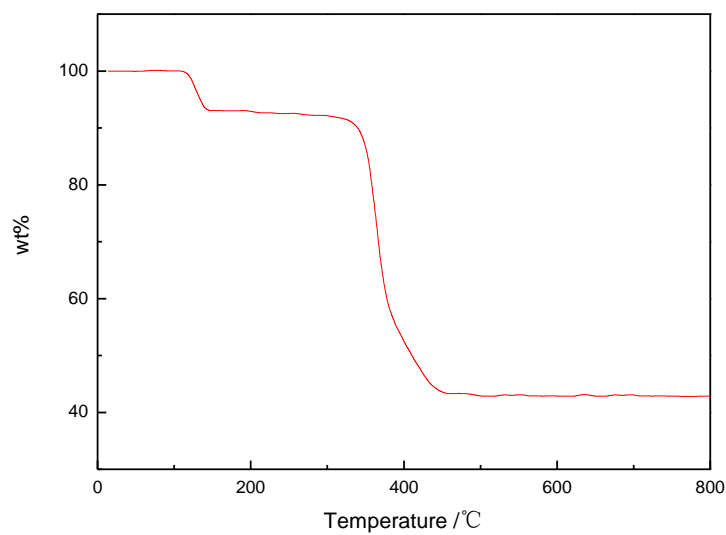


Fig. S5 The TG curves of **1**.

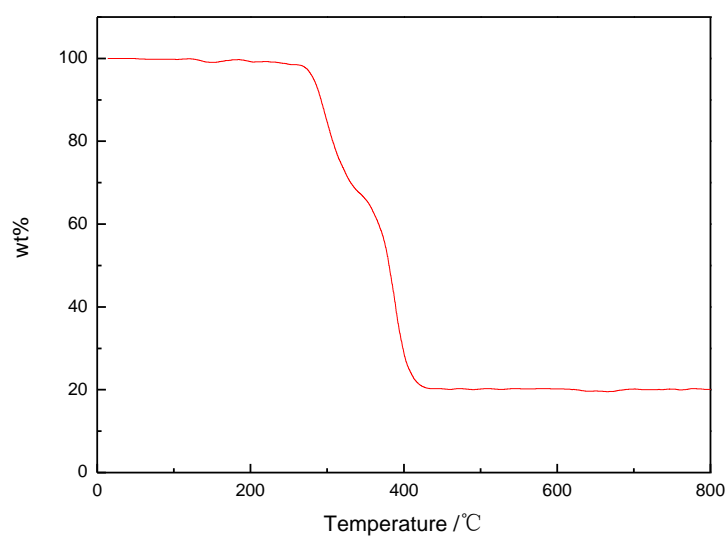


Fig. S6 The TGA curve of **2**.