

Supporting Information for

Control of selective and catalyst-free growth of Sb_2Te_3 and Te nanowires from sputter-deposited Al-Sb-Te thin films

By Byeong Geun Kim,^a Byung-Sung Kim,^b Seong-Min Jeong,^c Soon-Mok Choi,^c Dongmok Whang,^b Hong-Lim Lee^a and Sang-Hoon Hyun^{*a}

^a Department of Materials Science and Engineering, Yonsei University, Seoul 120-749, Korea

^b School of Advanced Materials Science & Engineering and Sungkyunkwan Advanced Institute of Nanotechnology, Sungkyunkwan University, Suwon 440-746, Korea

^c Korea Institute of Ceramic Engineering and Technology (KICET), Seoul 153-801, Korea

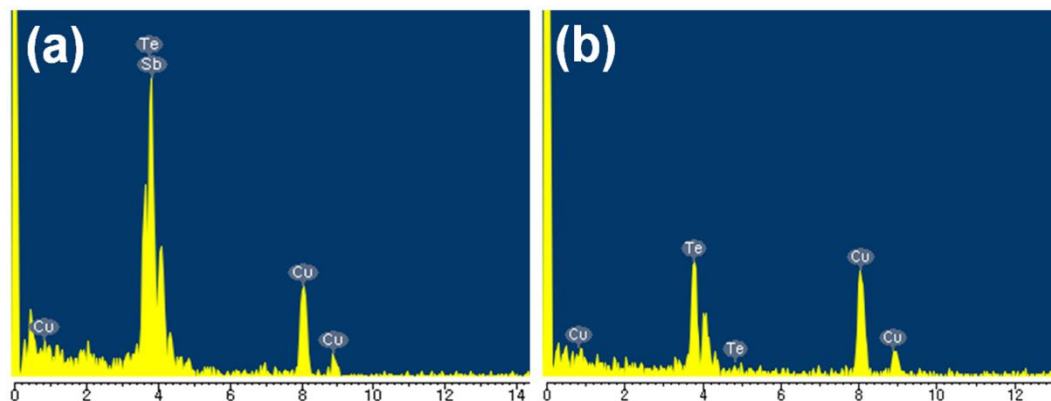


Fig. S1 EDS spectra obtained from the tips of (a) STNW and (b) TeNW.

The Cu peaks are generated by the copper grid which supports the NWs.

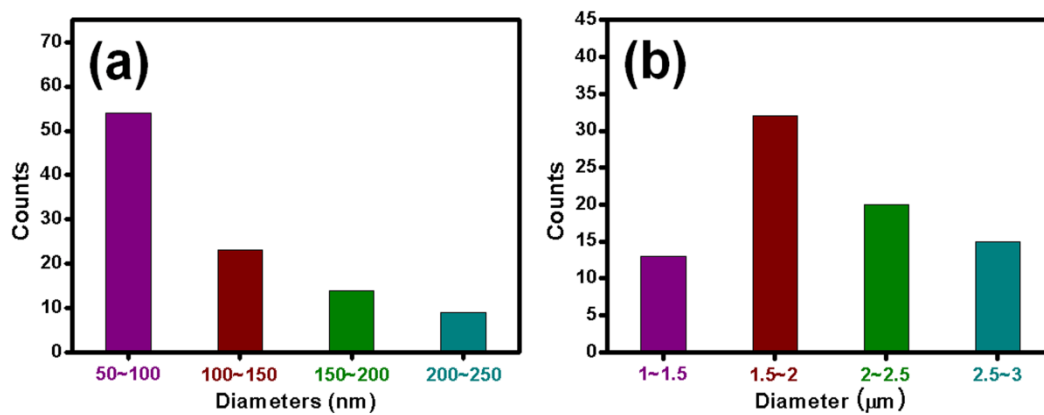


Fig. S2 Histograms of the measured diameters of (a) STNWs and (b) TeNWs, which were obtained from AST-3 annealed at 250 °C under N₂ and O₂ gas atmosphere, respectively.