

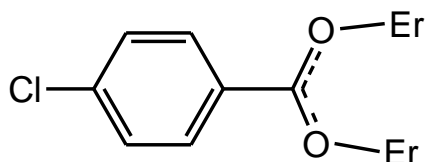
Two-dimensional decanuclear erbium wheel supported by mixed hemimellitate and 4-chlorobenzoate ligands

Xinfa Li,^{a,b} Yuanbiao Huang,^a and Rong Cao^{a,*}

^aState Key Laboratory of Structural Chemistry, Fujian Institute of Research on the Structure of Matter, Chinese Academy of Sciences, Fuzhou, 350002, P. R. China.

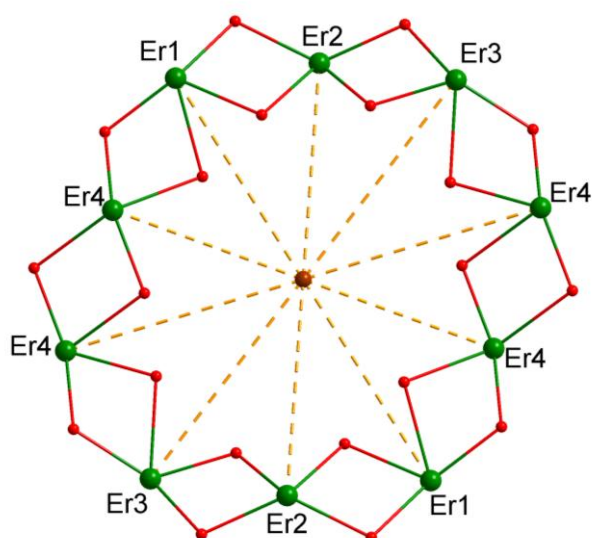
^bDepartment of Chemistry, Zunyi Normal College, Zunyi, 563002, P. R. China.

*Corresponding author: (email: rcao@fjirsm.ac.cn)



syn, syn-CO₂⁻

Scheme S1. Coordination mode of cba ligands exhibited in **1**.



Electronic supplementary information

Figure S1. Perspective view of the decanuclear [Er₁₀] wheel in **1**. The inversion center is drawn as a brown ball. The distances between two identical Er (III) ions (Å): Er(1)-Er(1) = 12.333, Er(2)-Er(2) = 11.722, Er(3)-Er(3) = 12.933, Er(4)-Er(4) = 12.763, Er(4)-Er(4) = 10.428.

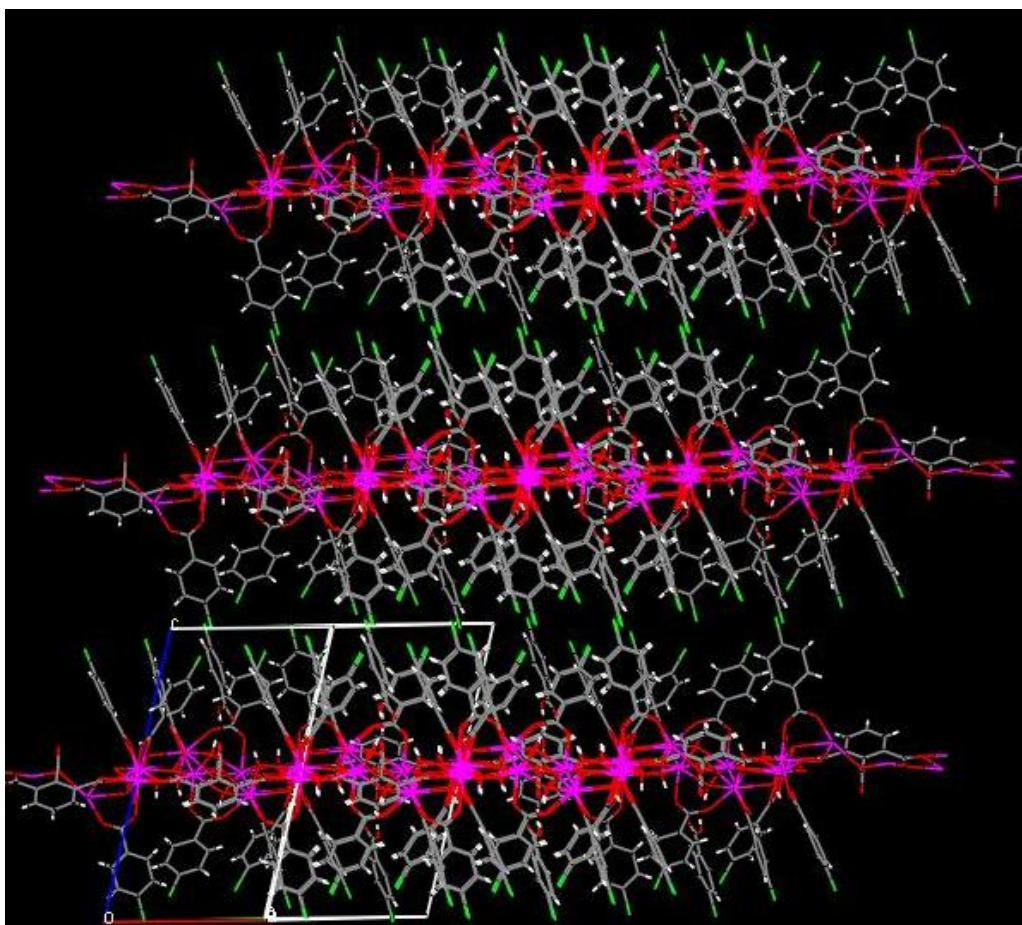


Figure S2. View of the 3D packing diagram of **1** along *b*-axis.

Electronic supplementary information

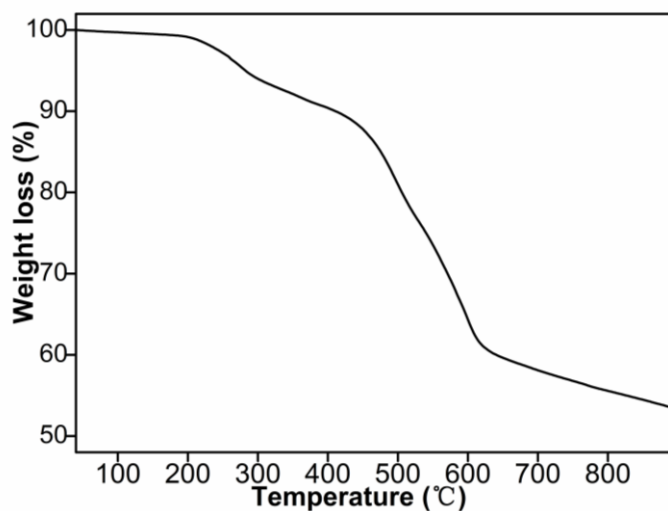


Figure S3. Thermogravimetric analysis (TGA) curve of **1**.

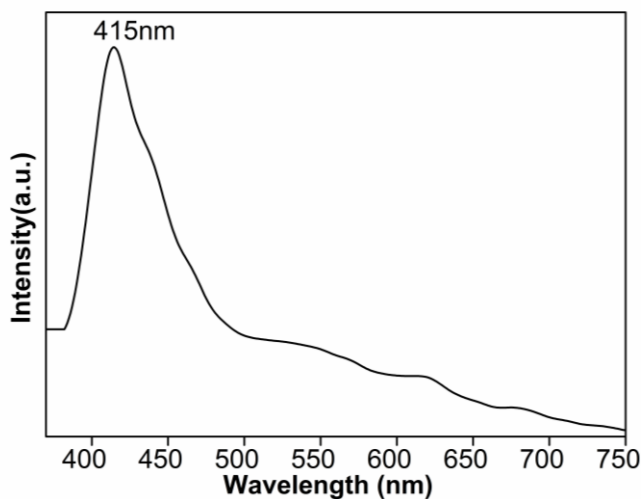


Figure S4. PL emission spectrum of **1** ($\lambda_{\text{ex}} = 360\text{nm}$).

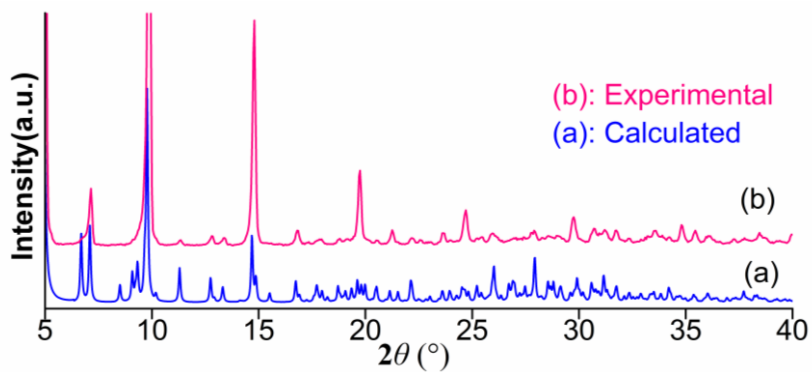


Figure S5. Experimental and calculated XRD patterns of **1**.