

Supporting information for this article: TGA-DTA curve

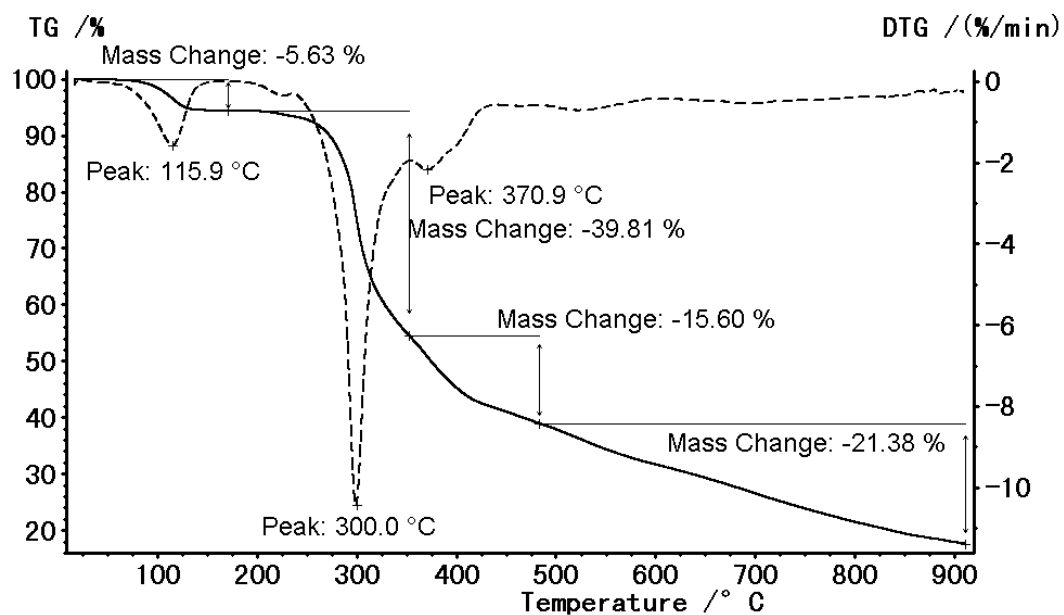


Figure S1 The TGA-DTA curves of **1** heating to 900 °C in N₂ at a rate of 10 °C min⁻¹

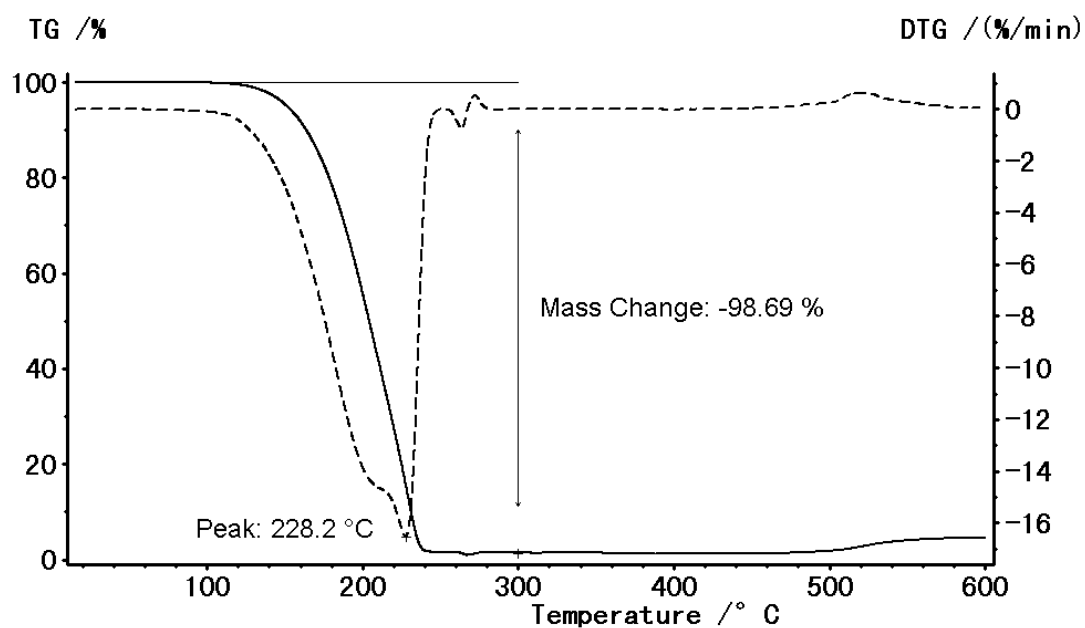


Figure S2 The TGA-DTA curves of **2** heating to 600 °C in N₂ at a rate of 10 °C min⁻¹

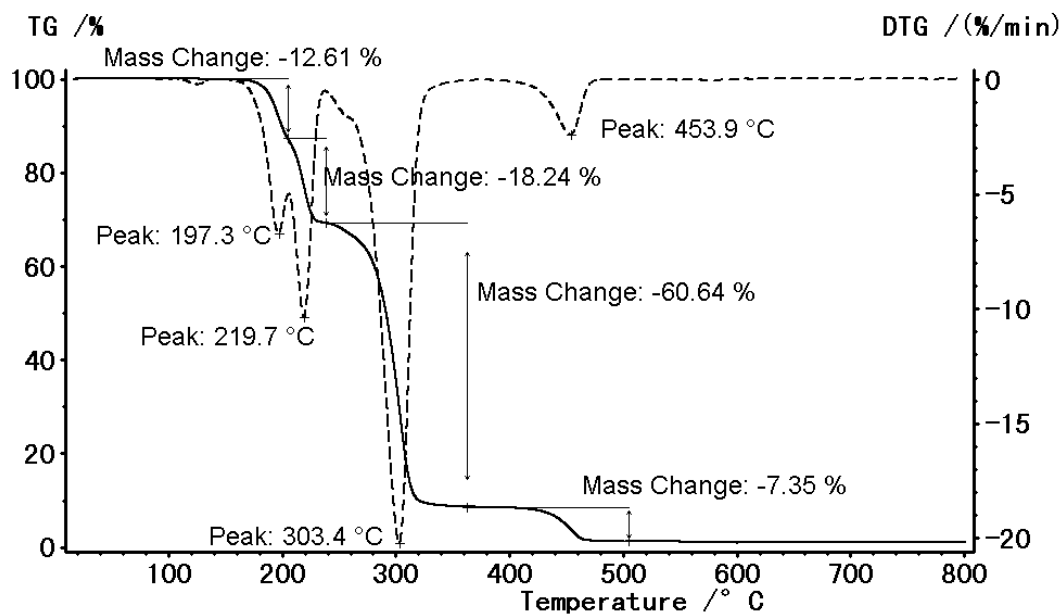


Figure S3 The TGA-DTA curves of **3** heating to 800 °C in N₂ at a rate of 10 °C min⁻¹

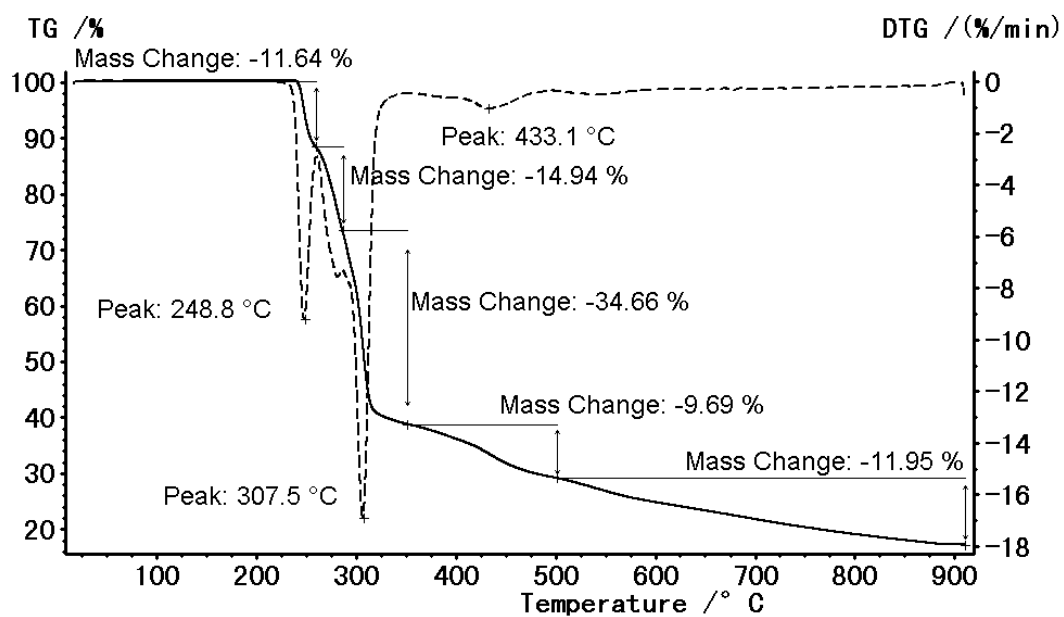


Figure S4 The TGA-DTA curves of **4** heating to 900 °C in N₂ at a rate of 10 °C min⁻¹

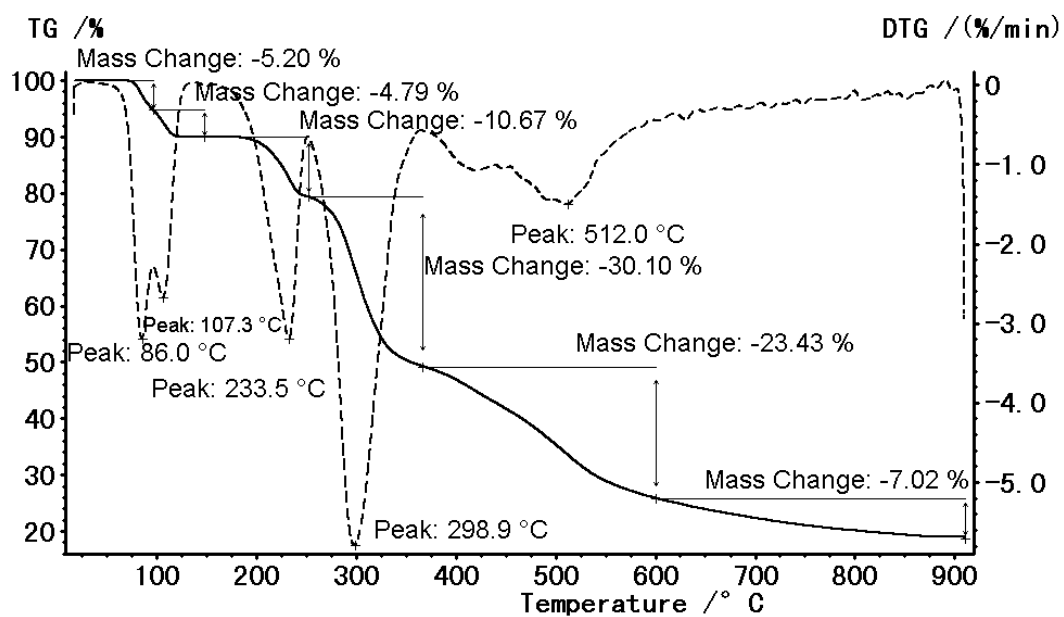


Figure S5 The TGA-DTA curves of **5** heating to 900 °C in N₂ at a rate of 10 °C min⁻¹

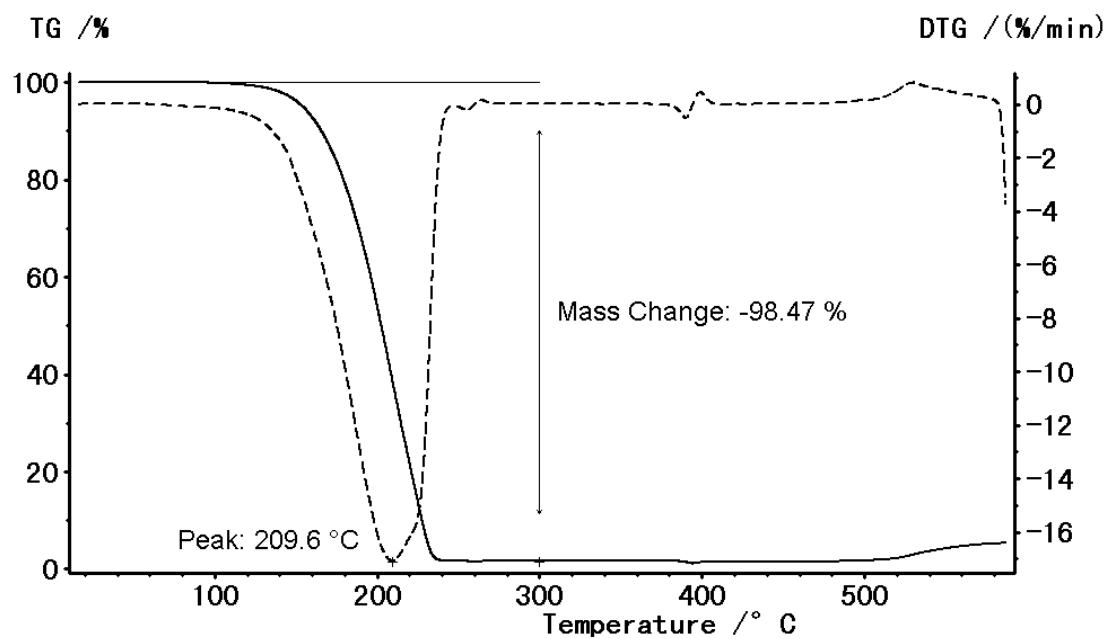


Figure S6 The TGA-DTA curves of **6** heating to 600 °C in N₂ at a rate of 10 °C min⁻¹

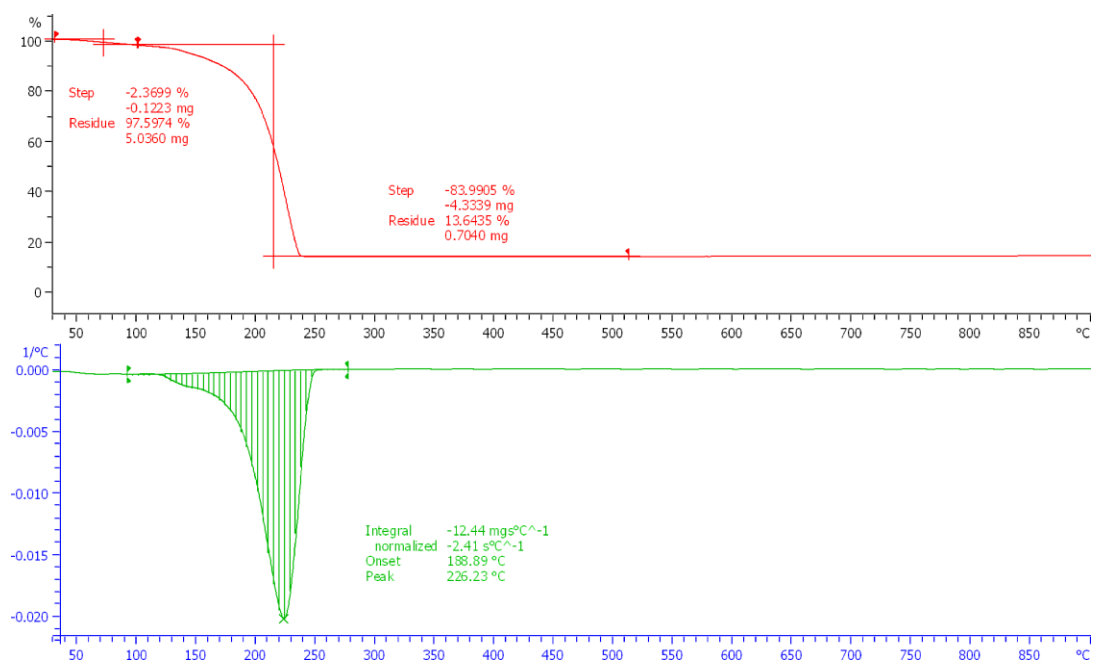


Figure S7 The TGA-DTA curves of 7 heating to 900 °C in N₂ at a rate of 10 °C min⁻¹