

Electronic Supplementary Information

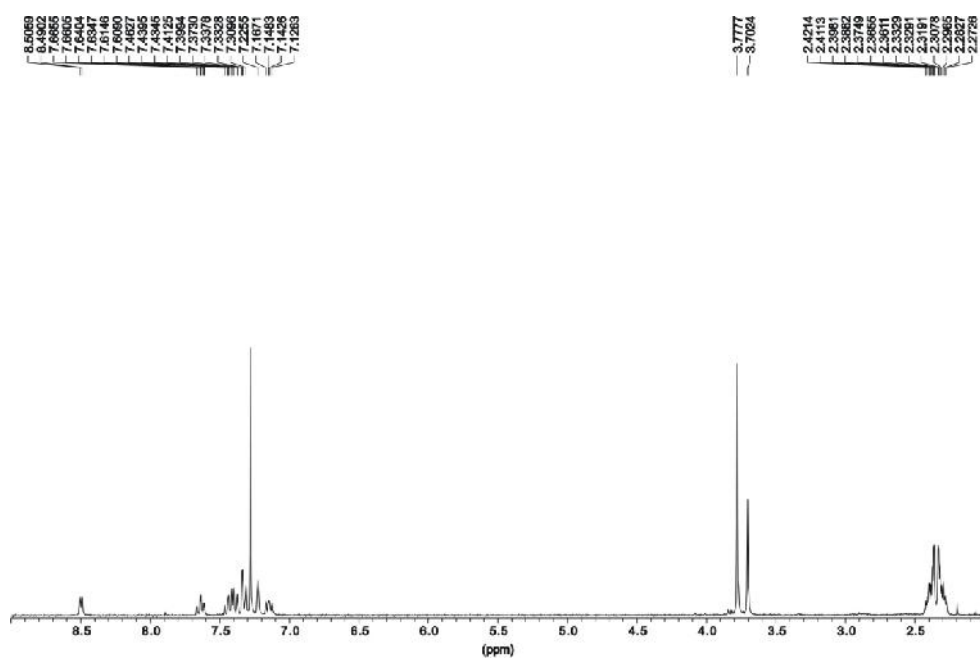
for

Macrocycles incorporating isomeric arms: synthesis and crystal structures of ligands and their mono-, di- and polynuclear supramolecular complexes

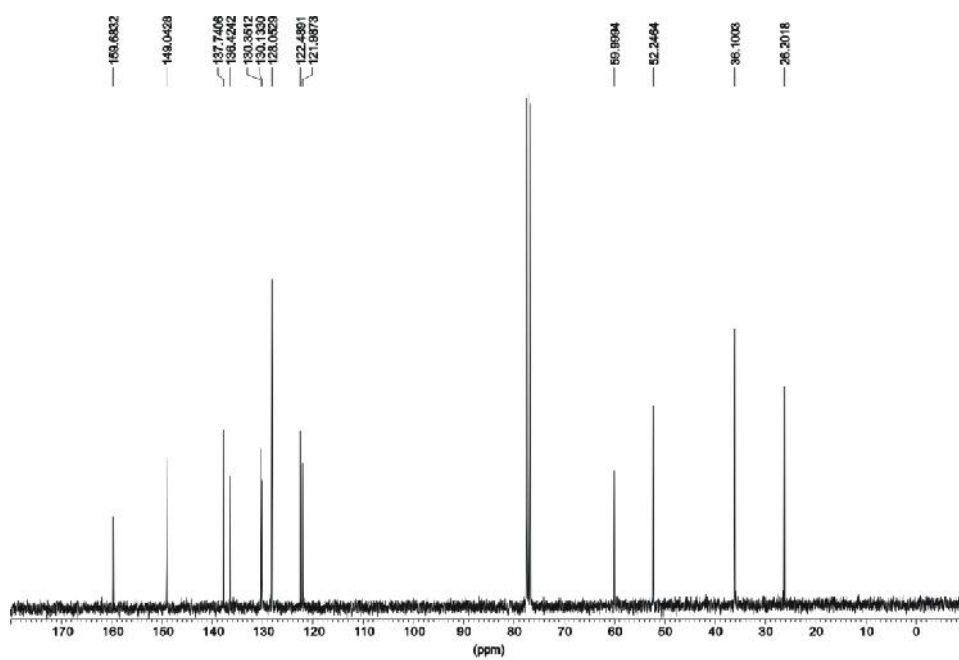
Sunhong Park,[†] Seul-Gi Lee,[†] Jong Hwa Jung,[†] Mari Ikeda,[‡] Yoichi Habata^{*:‡} and Shim Sung Lee^{*:†}

[†]Department of Chemistry and Research Institute of Natural Science, Gyeongsang National University, Jinju 660-701, S. Korea

[‡]Department of Chemistry, Toho University, 2-2-1 Miyama, Funabashi, Chiba 274-8510, Japan

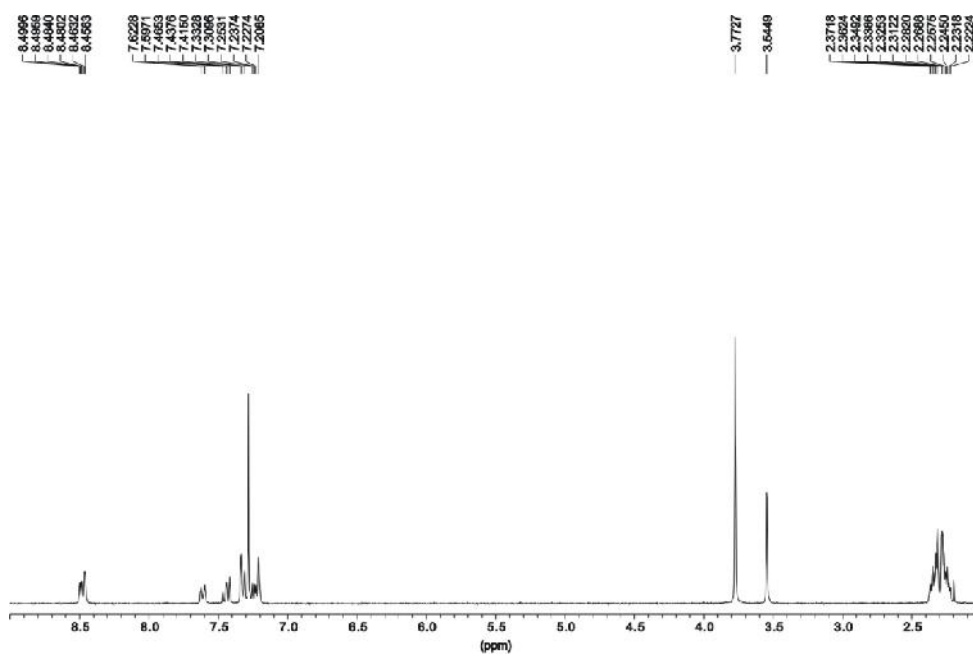


(a)

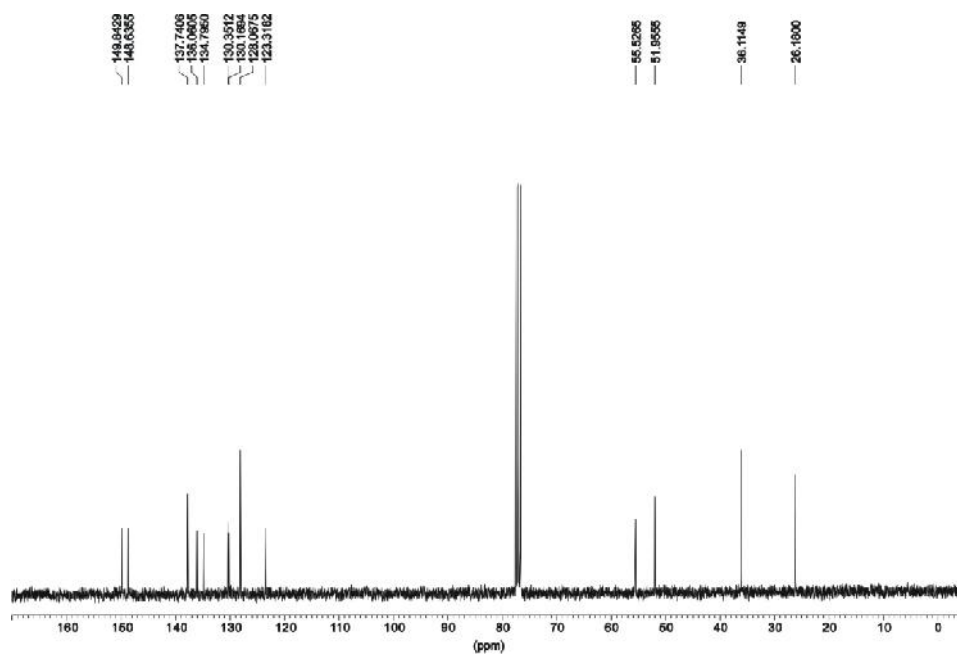


(b)

Fig. S1 (a) ^1H and (b) ^{13}C NMR spectra of *o*-L in CDCl_3 .

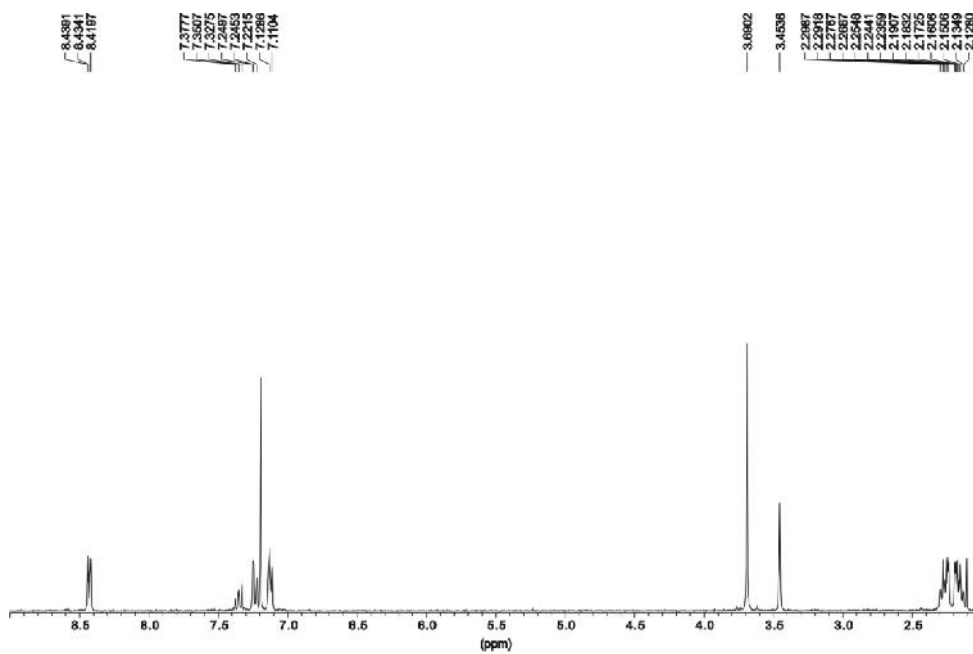


(a)

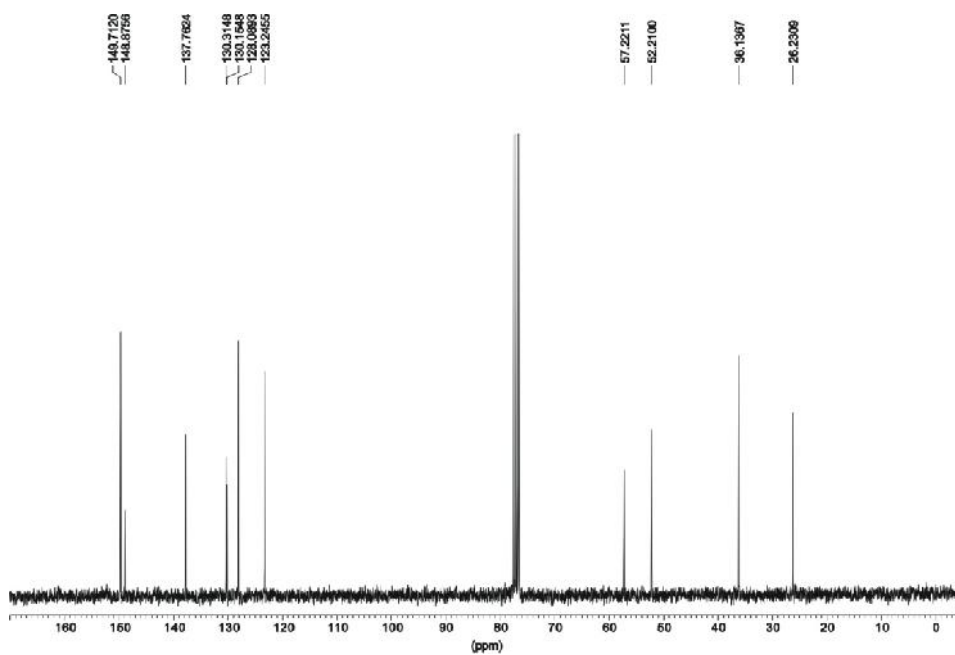


(b)

Fig. S2 (a) ^1H and (b) ^{13}C NMR spectra of *m-L* in CDCl_3 .



(a)



(b)

Fig. S3 (a) ^1H and (b) ^{13}C NMR spectra of *p-L* in CDCl_3 .