

**The differing influence of halides upon supramolecular aggregation through C–X... $\pi$  interactions in the crystal structures of (5-methyl-1-(4-X-arylamino)-1H-1,2,3-triazol-4-yl)methanol derivatives, X = H, F and Cl†**

**Alessandro K. Jordão,<sup>a</sup> Vitor F. Ferreira,<sup>a</sup> Anna C. Cunha,<sup>a</sup> James L. Wardell,<sup>b,c</sup>  
Solange M.S.V. Wardell<sup>\*d</sup> and Edward R.T. Tiekink<sup>\*e</sup>**

<sup>a</sup> *Universidade Federal Fluminense, Departamento de Química Orgânica, Instituto de Química, Outeiro de São João Baptista, 24020-141 Niterói, RJ, Brazil*

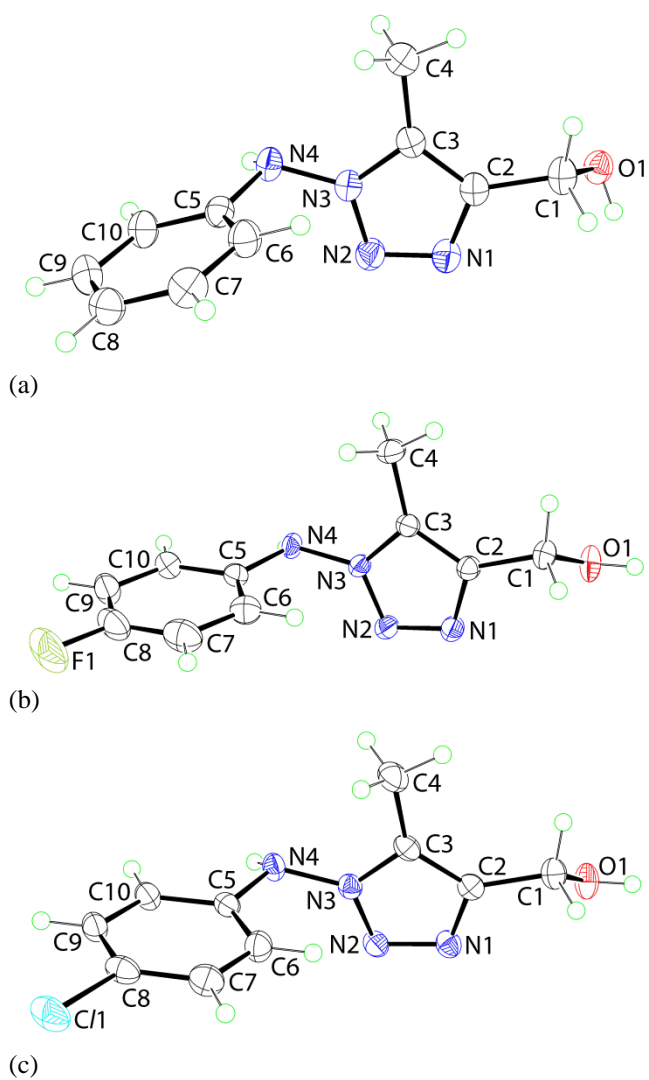
<sup>b</sup> *FioCruz – Fundação Oswaldo Cruz, Instituto de Tecnologia em Fármacos – FarManguinhos, Rua Sizenando Nabuco, 100, Manguinhos, 21041-250, Rio de Janeiro, RJ, Brazil. Fax 55.21 2552-0435; Tel: 55 21 2552-0435*

<sup>c</sup> *Department of Chemistry, University of Aberdeen, Meston Walk, Old Aberdeen, AB24 3UE, Scotland*

<sup>d</sup> *Centro de Desenvolvimento Tecnológico em Saúde (CDTS), Fundação Oswaldo Cruz (FIOCRUZ), Casa Amarela, Campus de Manguinhos, Av. Brasil 4365, 21040-900, Rio de Janeiro, RJ, Brazil; E-mail: [solangewardell@yahoo.co.uk](mailto:solangewardell@yahoo.co.uk)*

<sup>b</sup> Department of Chemistry, University of Malaya, 50603 Kuala Lumpur, Malaysia. E-mail: [Edward.Tiekink@gmail.com](mailto:Edward.Tiekink@gmail.com); Fax: +60 3 7967 4193; Tel: +60 3 7697 6775

## Electronic Supplementary Information



**Fig. S1** Molecular structures of (a) **1**, (b) **2**, and (c) **3**. Diagrams are drawn at the 50% probability level.