

Supplementary Information for:

Alkyl Substituents Introduced Novel d^{10} -Metal–Imidazole-4,5-Dicarboxylate Frameworks: Synthesis, Structure Diversities and Photoluminescence Properties

Quan-Guo Zhai*, Rong-Rong Zeng, Shu-Ni Li, Yu-Cheng Jiang, Man-Cheng Hu*

Key Laboratory of Macromolecular Science of Shaanxi Province

School of Chemistry and Chemical Engineering

Shaanxi Normal University

Xi'an, 710062, Shaanxi, P. R. China

Tel: +86-29-81530767

Fax: +86-29-81530727

**Corresponding authors:*

E-mail: zhaiqg@snnu.edu.cn (Dr. Q. -G. Zhai)

hmch@snnu.edu.cn (Prof. M. -C. Hu)

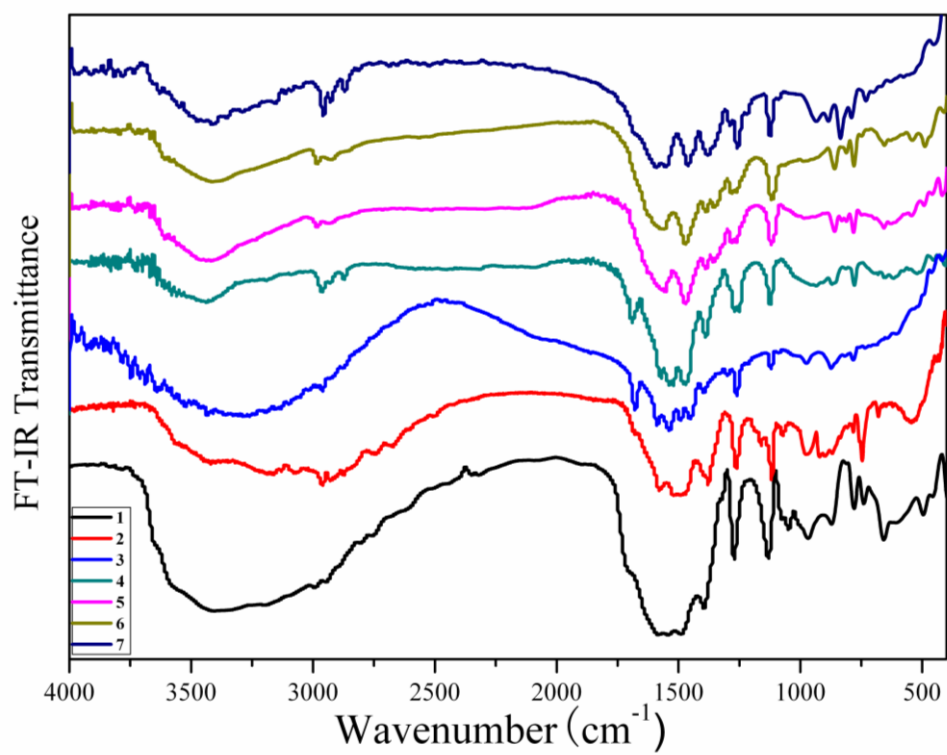


Figure S1. FT-IR spectra of complexes 1-7.

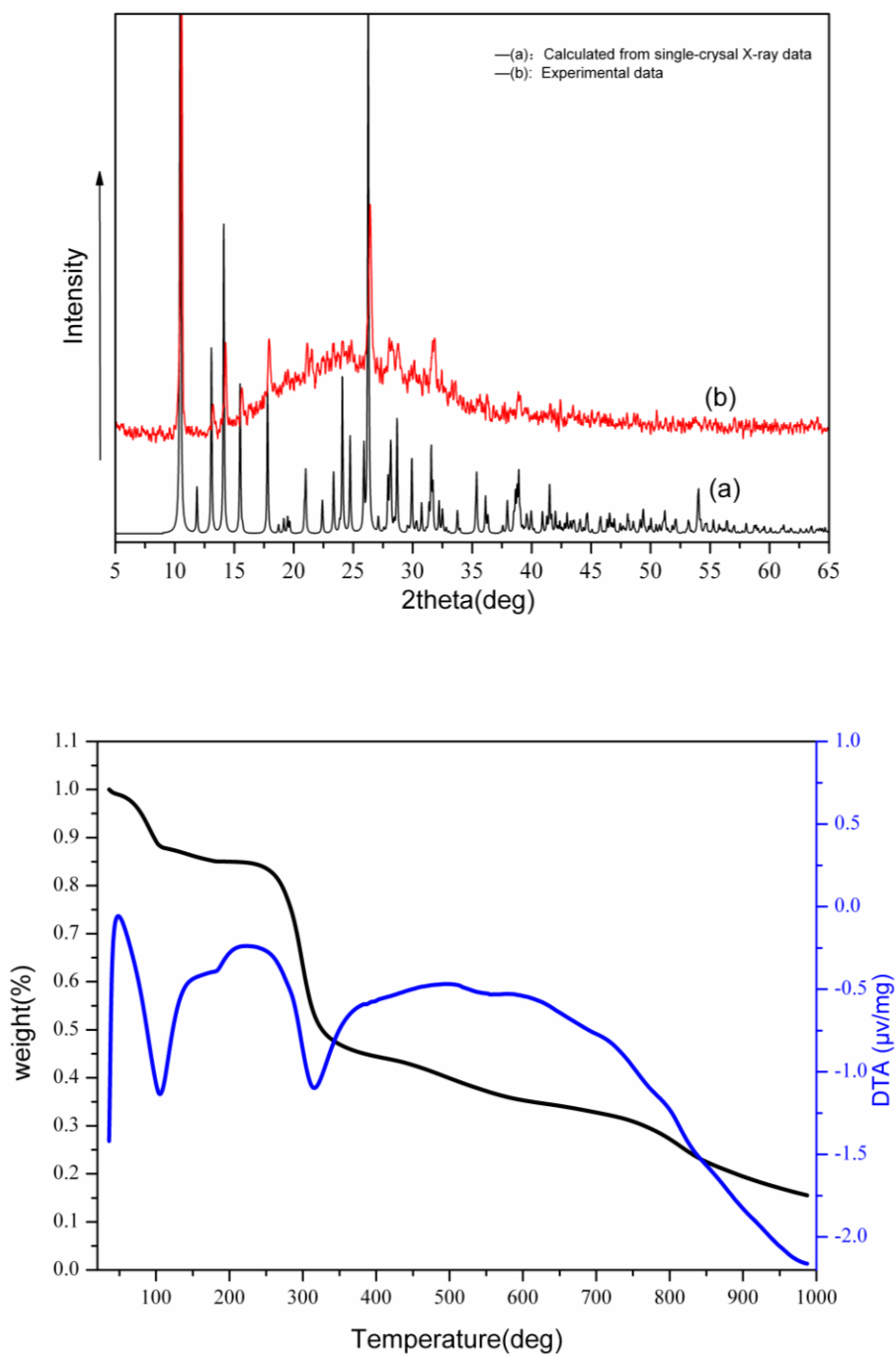


Figure S2. XRPD (top) and TG (black)/DTA (blue) (bottom) curves for **1**.

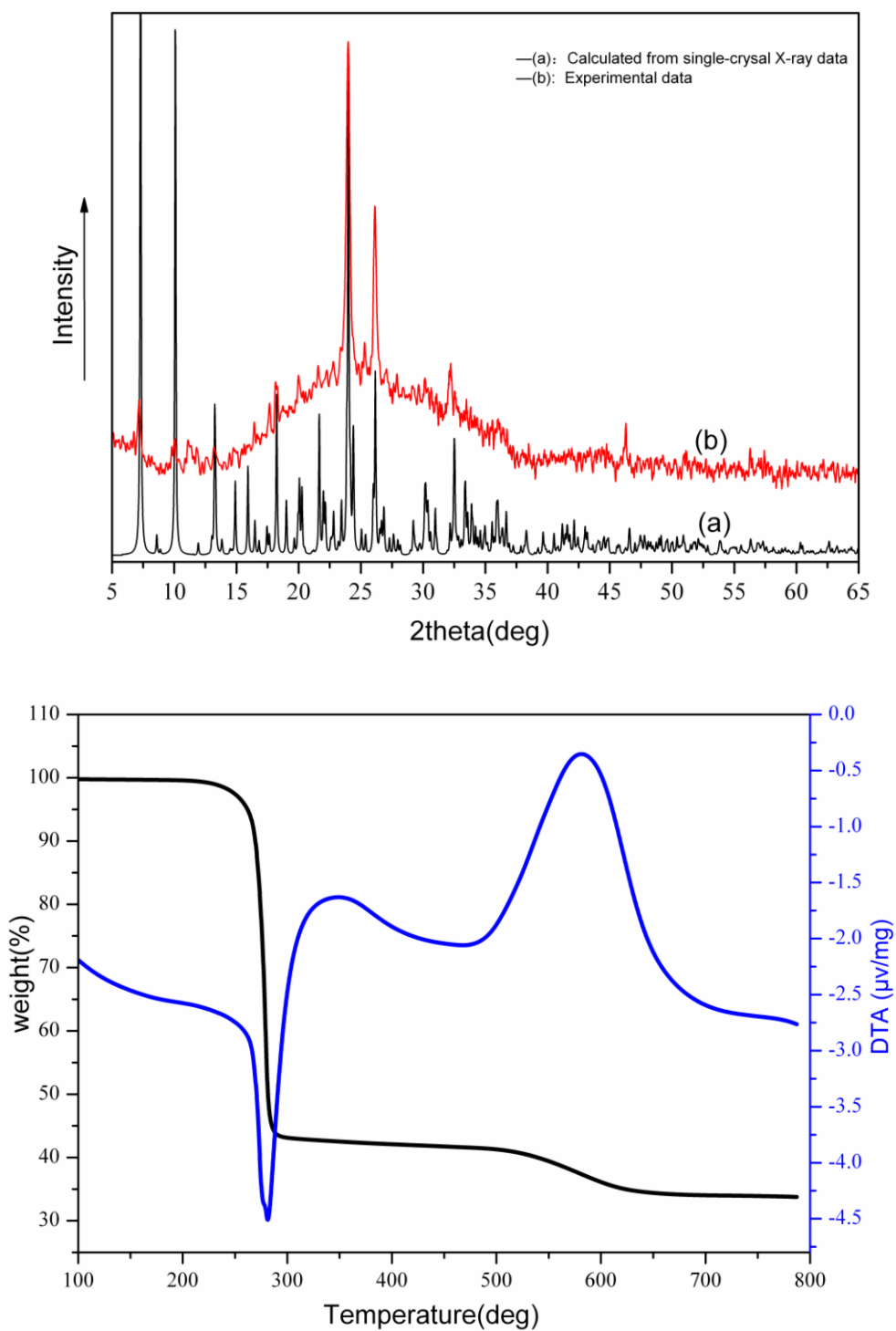


Figure S3. XRPD (top) and TG (black)/DTA (blue) (bottom) curves for **2**.

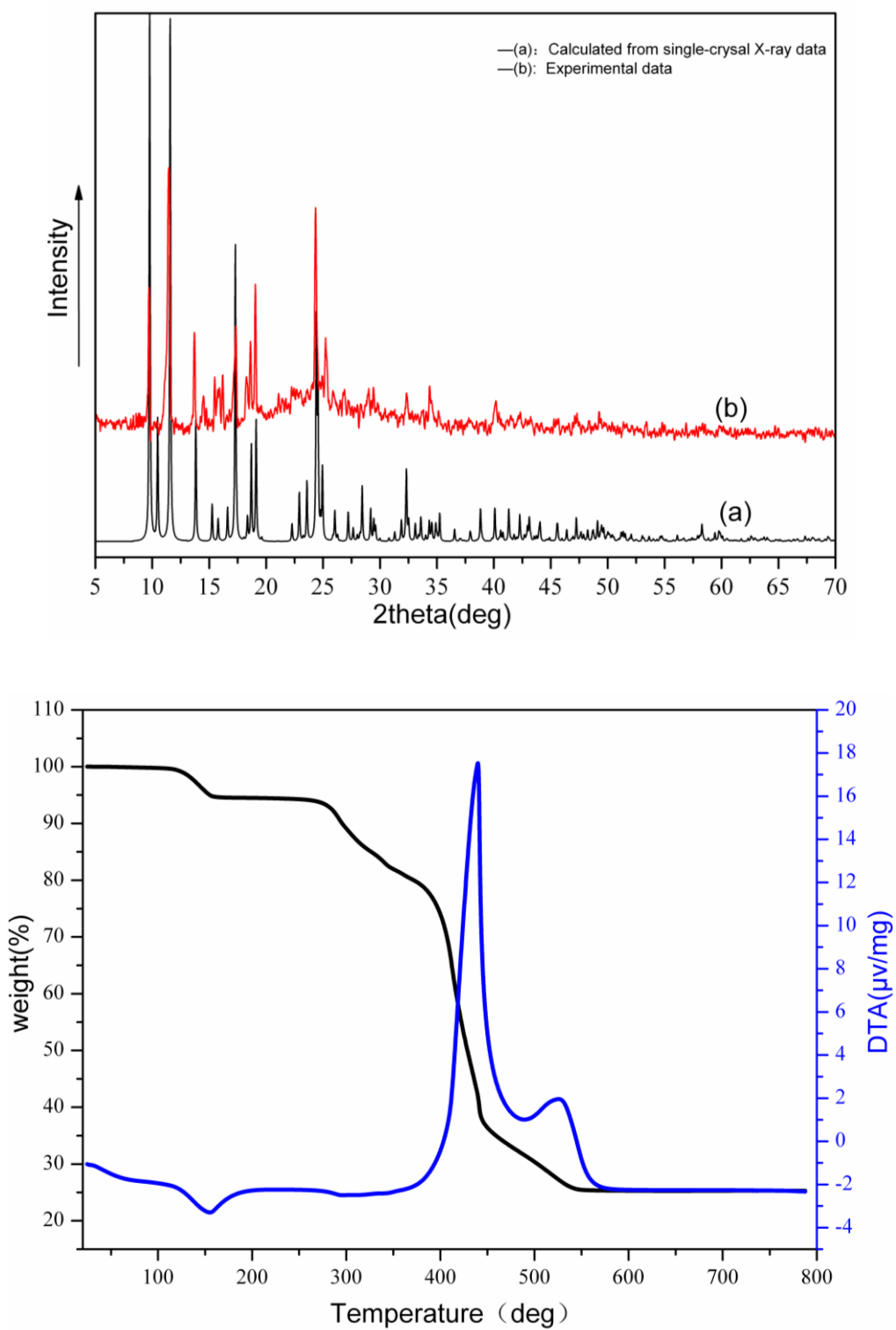


Figure S4. XRPD (top) and TG (black)/DTA (blue) (bottom) curves for **3**.

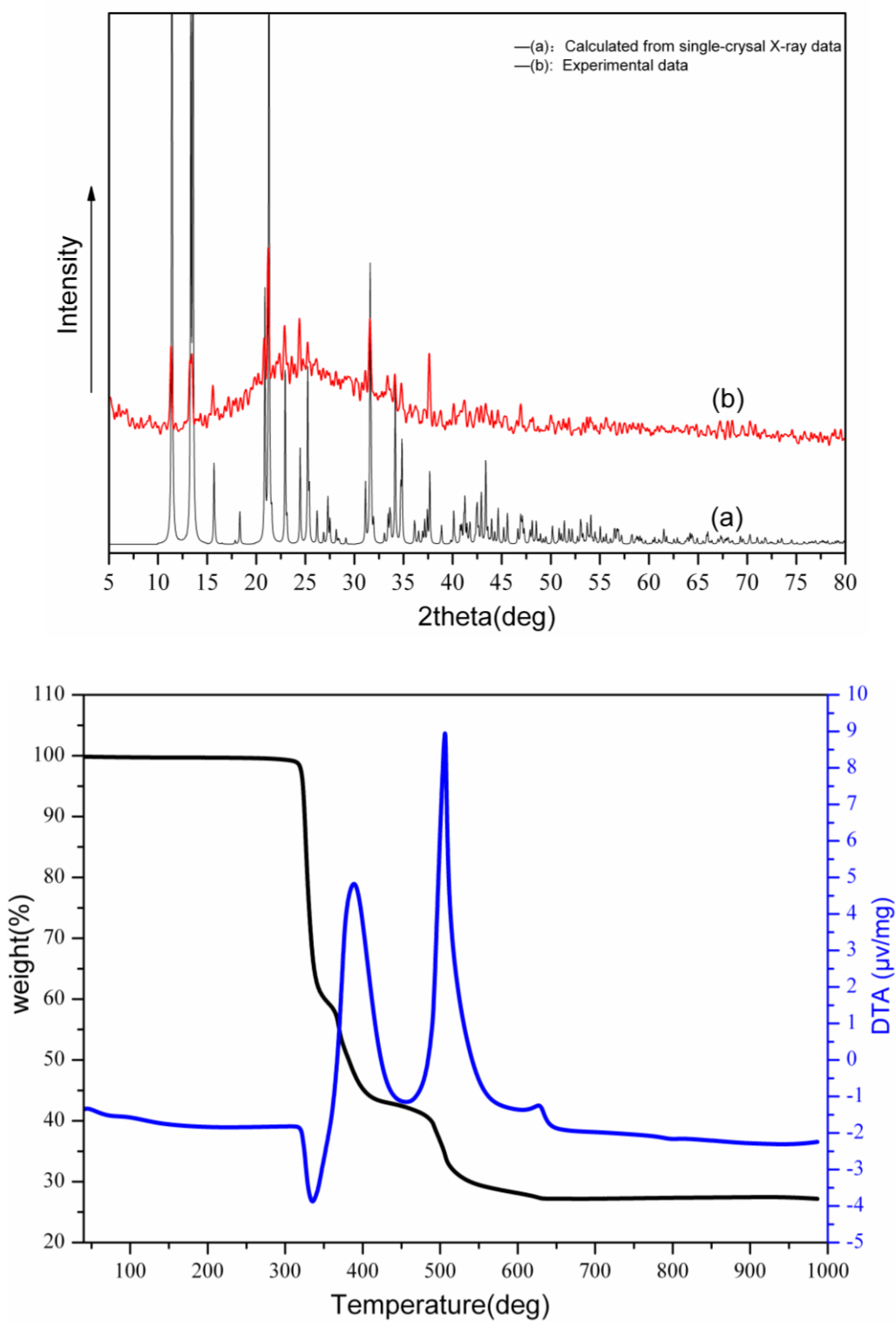


Figure S5. XRPD (top) and TG (black)/DTA (blue) (bottom) curves for **4**.

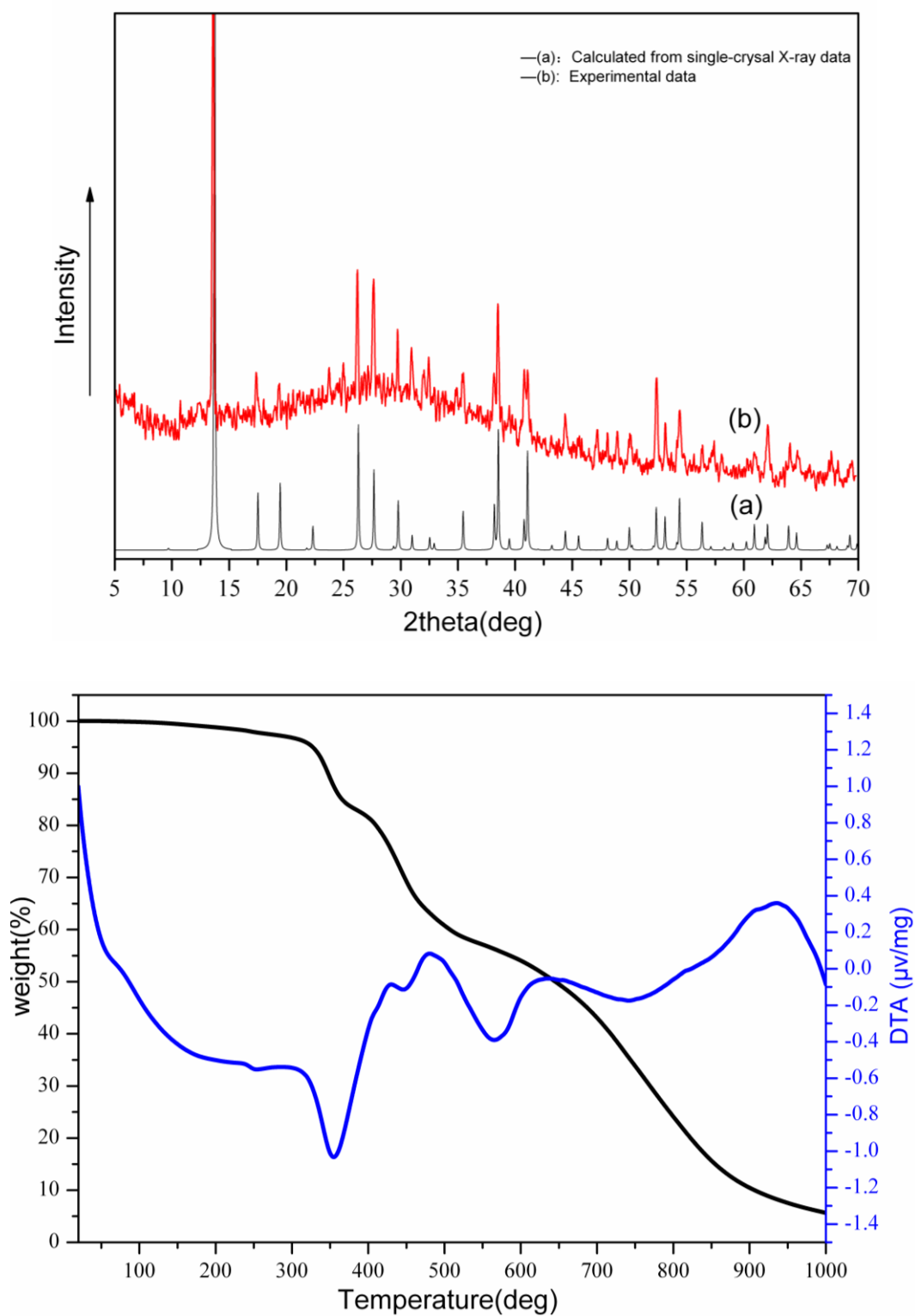


Figure S6. XRPD (top) and TG (black)/DTA (blue) (bottom) curves for **5**.

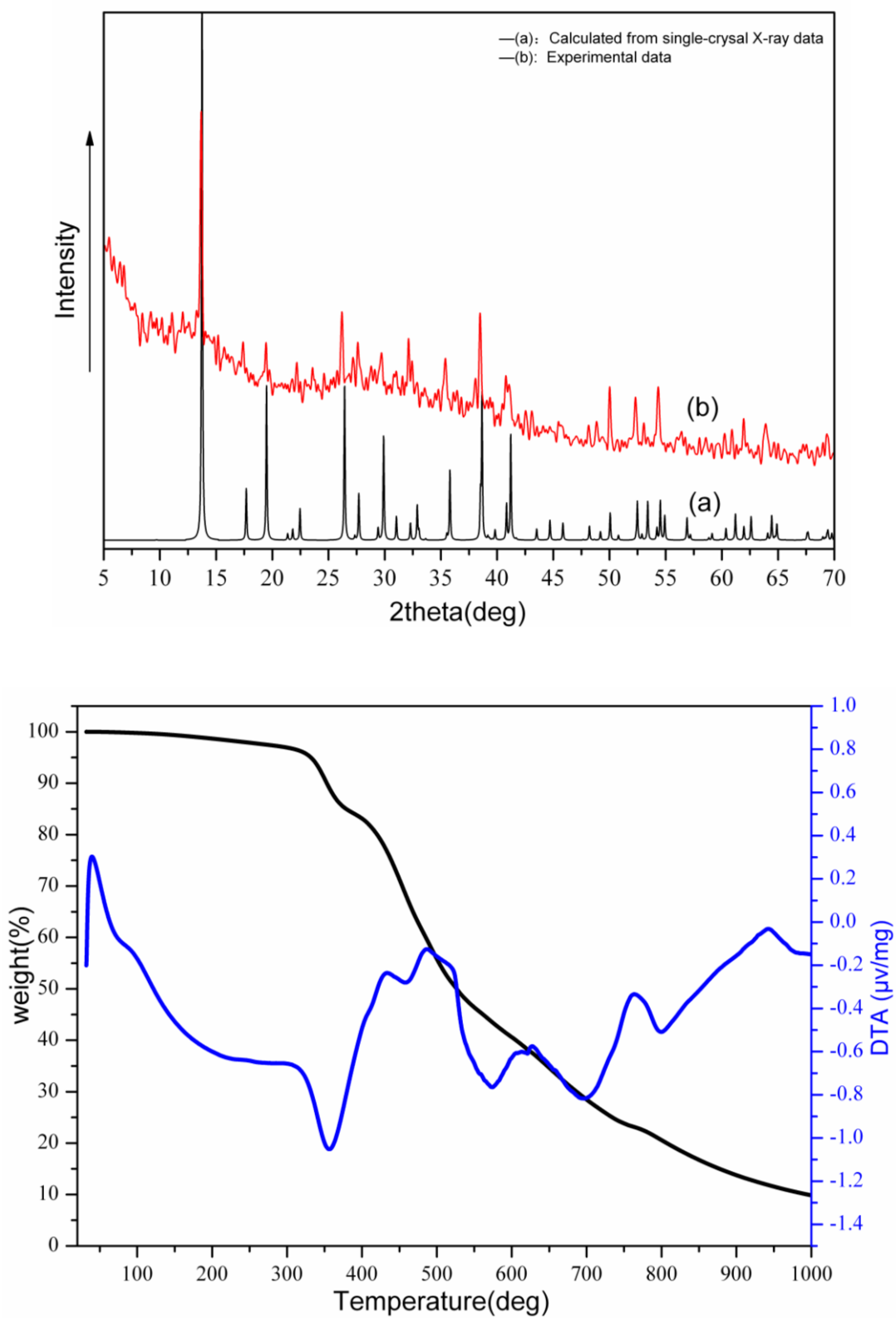


Figure S7. XRPD (top) and TG (black)/DTA (blue) (bottom) curves for **6**.

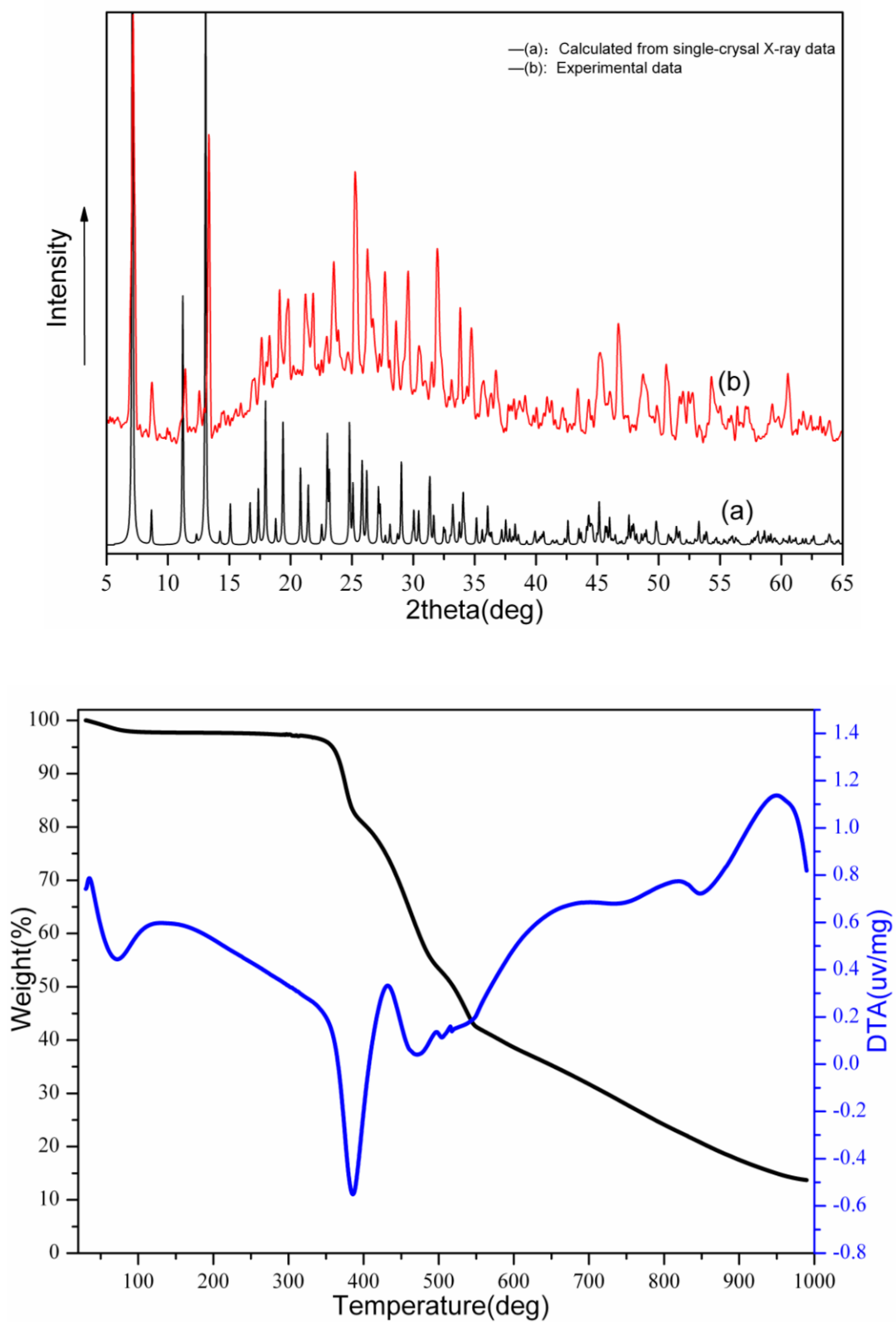


Figure S8. XRPD (top) and TG (black)/DTA (blue) (bottom) curves for **7**.

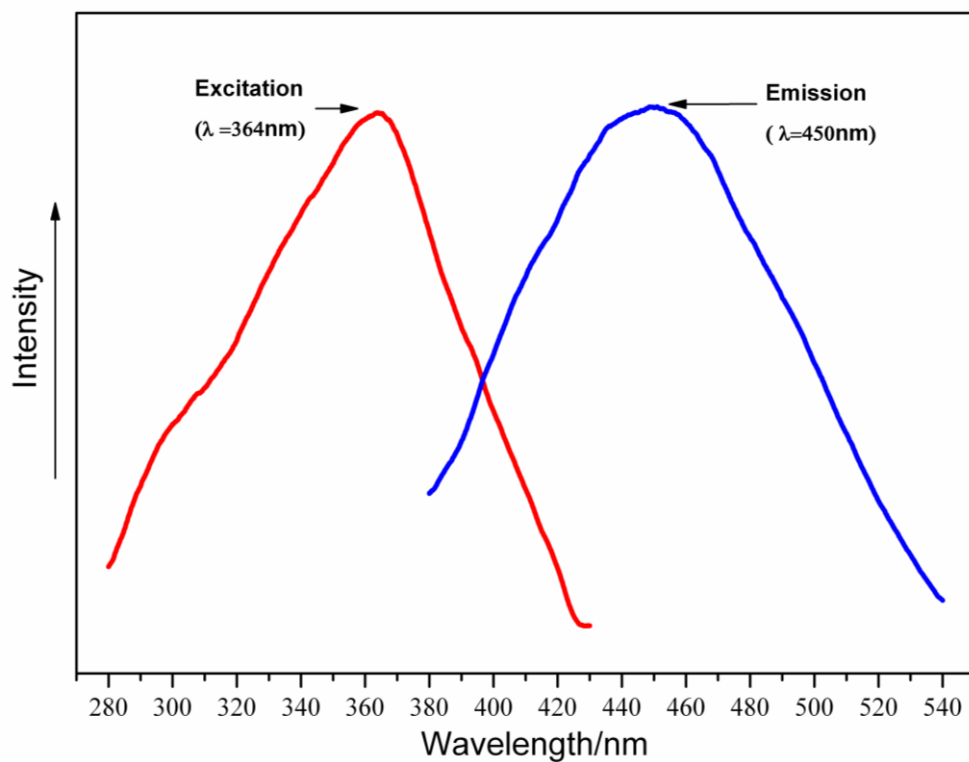


Figure S9. Solid state emission spectra of **H₃MIMDC** at ambient temperature.

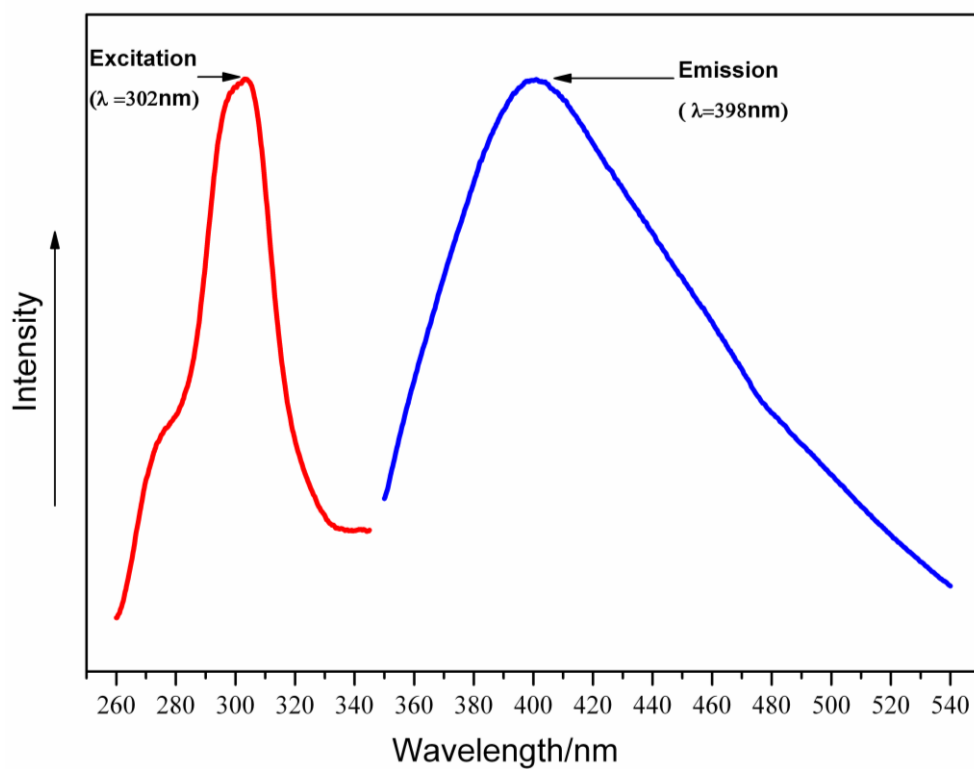


Figure S10. Solid state emission spectra of **H₃EIMDC** at ambient temperature.

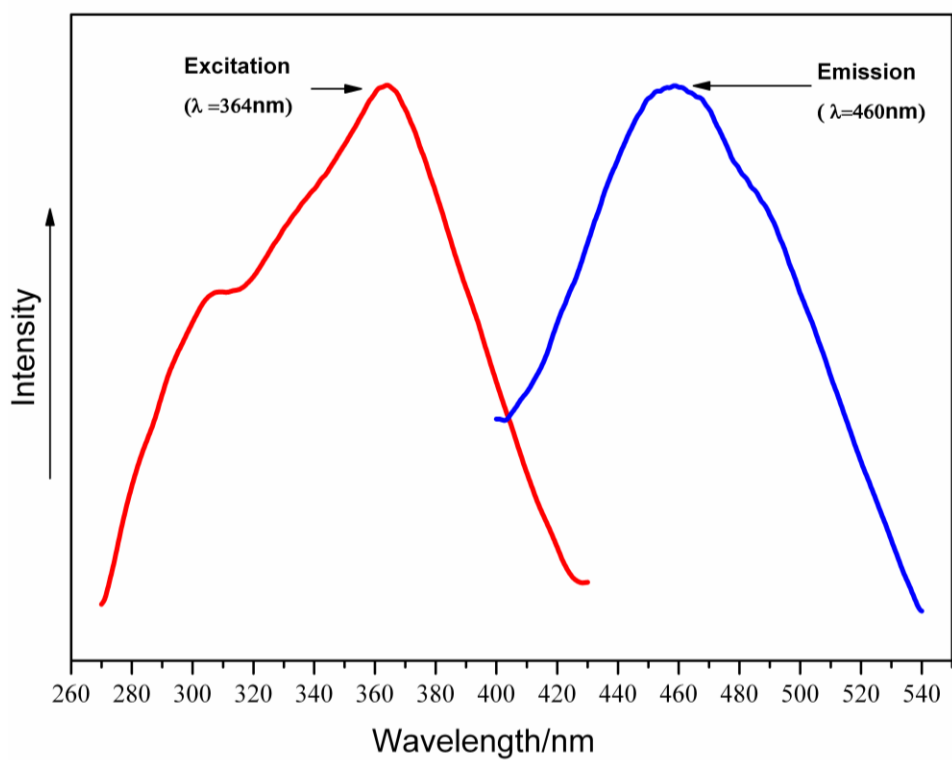


Figure S11. Solid state emission spectra of **H₃PIMDC** at ambient temperature.

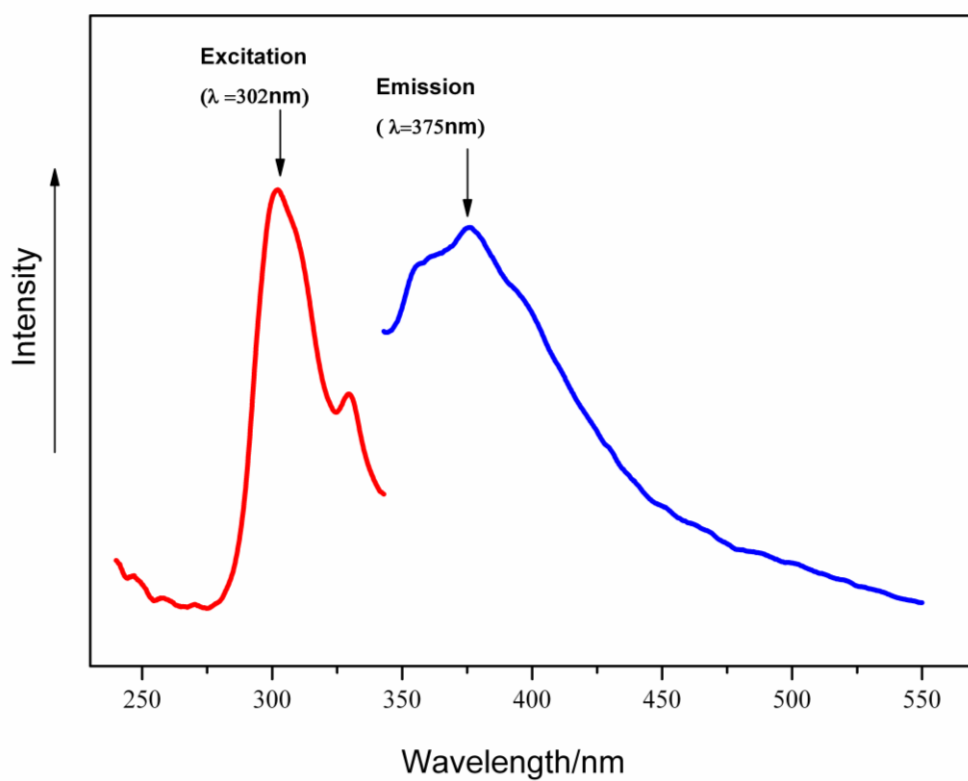


Figure S12. Solid state emission spectra of **1** at ambient temperature.

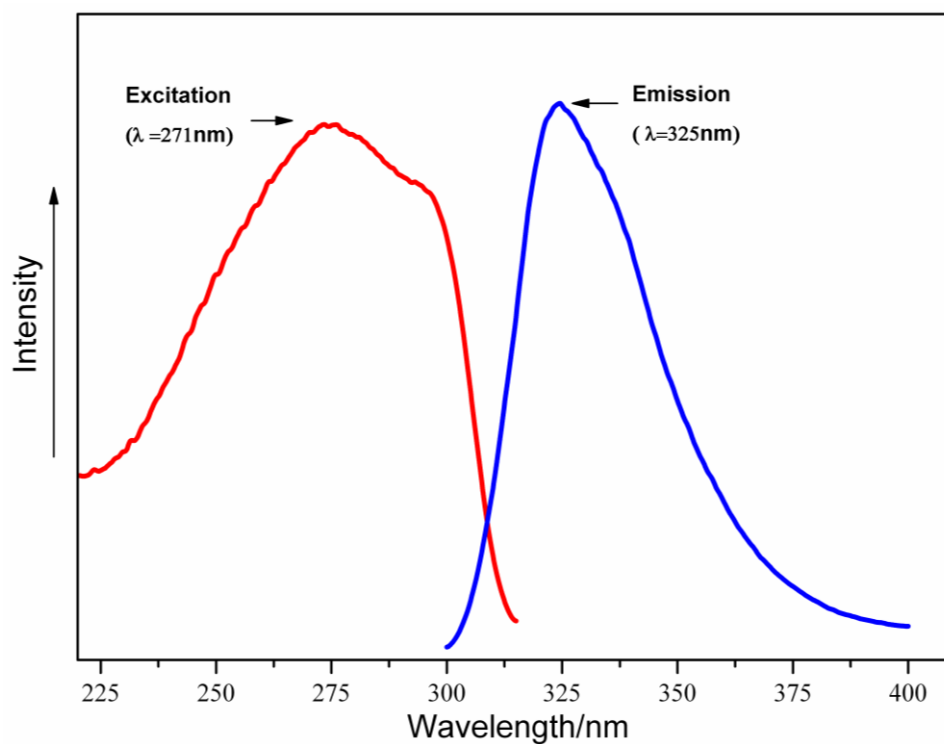


Figure S13. Solid state emission spectra of **3** at ambient temperature.

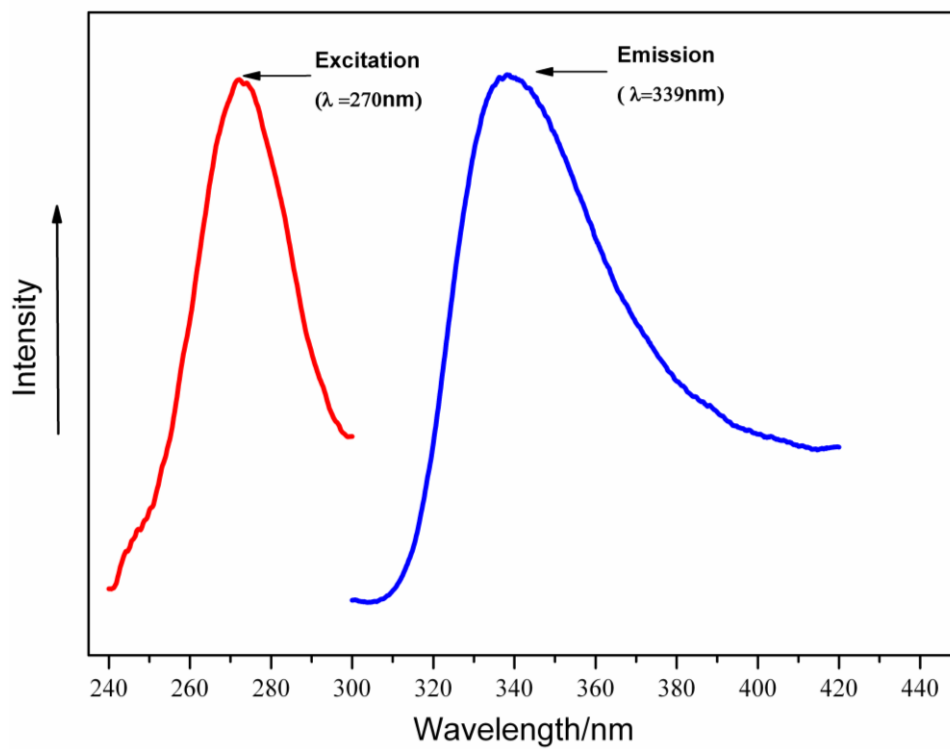


Figure S14. Solid state emission spectra of **5** at ambient temperature.

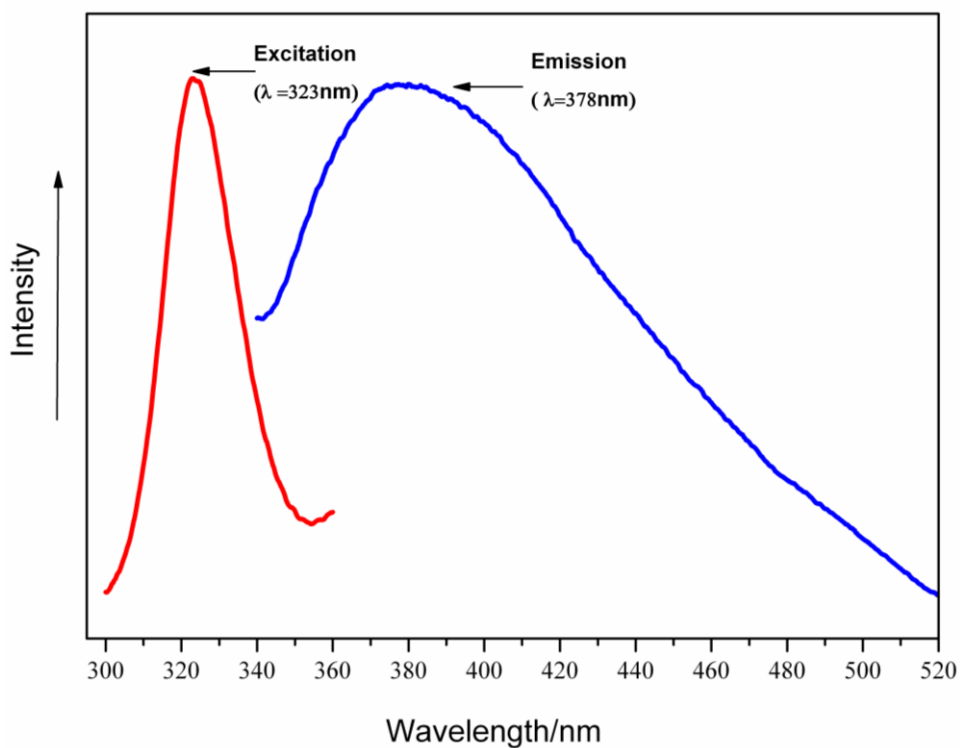


Figure S15. Solid state emission spectra of **6** at ambient temperature.

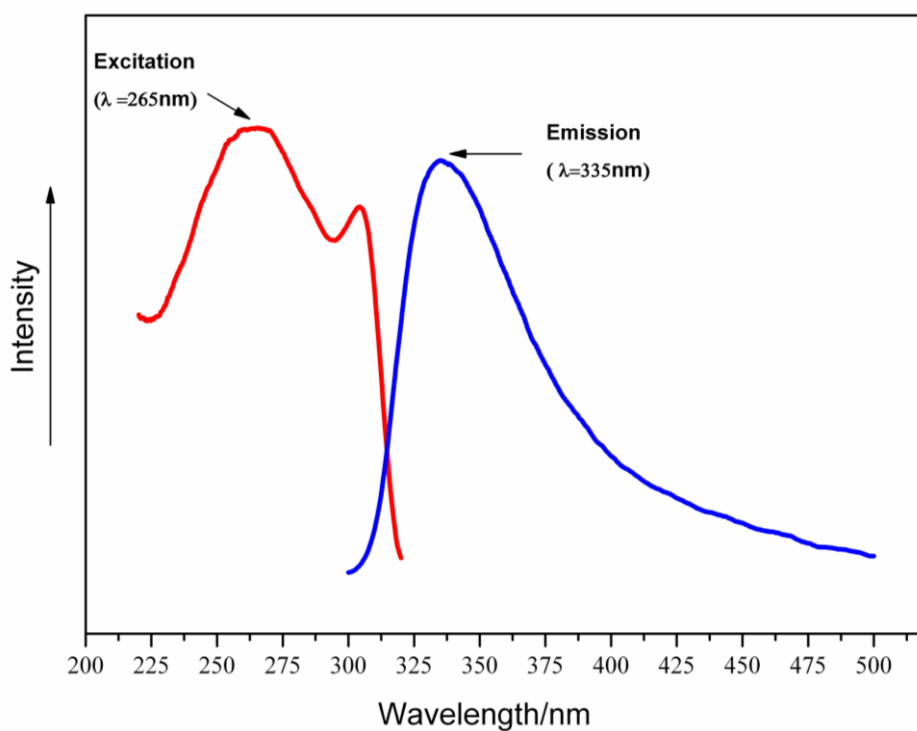


Figure S16. Solid state emission spectra of **7** at ambient temperature.