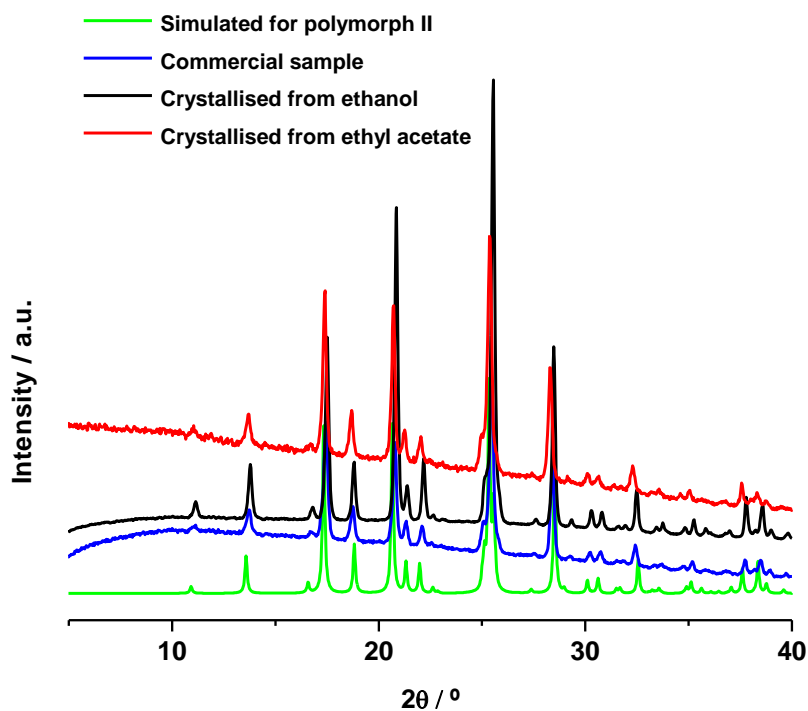
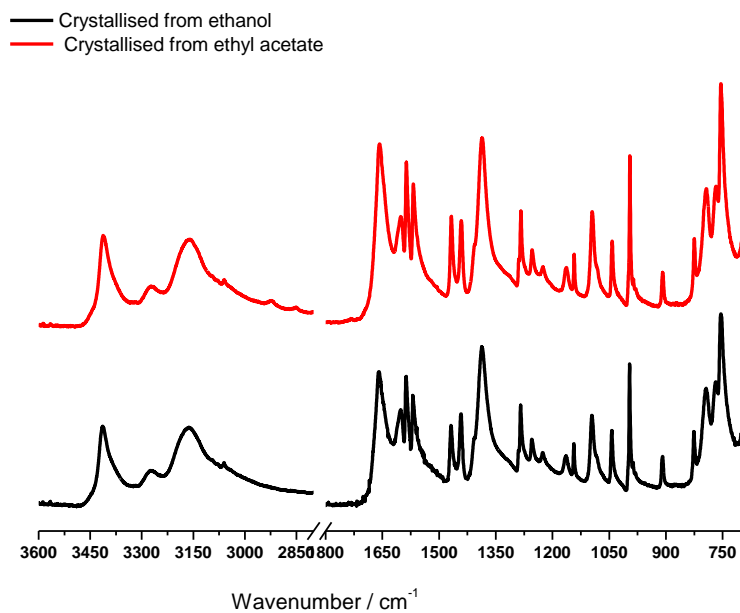


## Electronic Supplementary Information (ESI)

*Resolved structures of two picolinamide polymorphs. Investigation of the dimorphic system behaviour under conditions relevant to co-crystal synthesis*



**Fig. ESI-1** X-ray powder diffractograms of picolinamide samples and simulated diffractogram of polymorph II,  $T = 293$  K..



**Fig. ESI-2** FTIR/ATR spectra of picolinamide samples, identified as polymorph II **1**. Crystallised from ethanol, **2**. Crystallised from ethyl acetate.