

Supporting Information

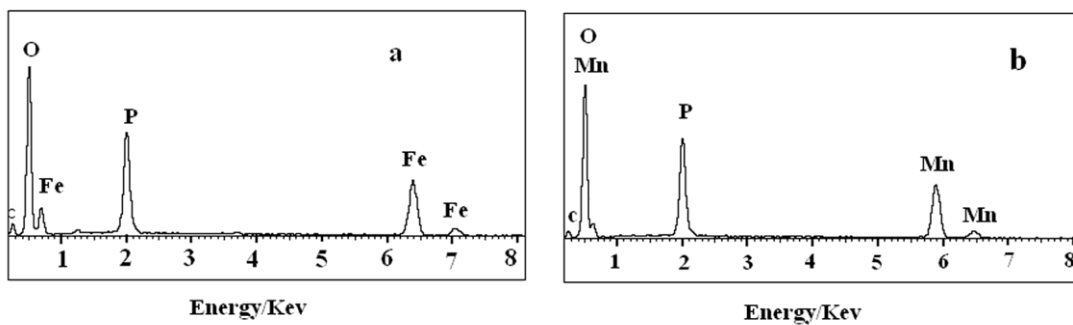


Fig. S1 EDS pattern of hierarchical LiMnPO_4 microsphere prepared by solvothermal treatment at $180\text{ }^\circ\text{C}$ for 24 h: (a) LiFePO_4 and (b) LiMnPO_4 .

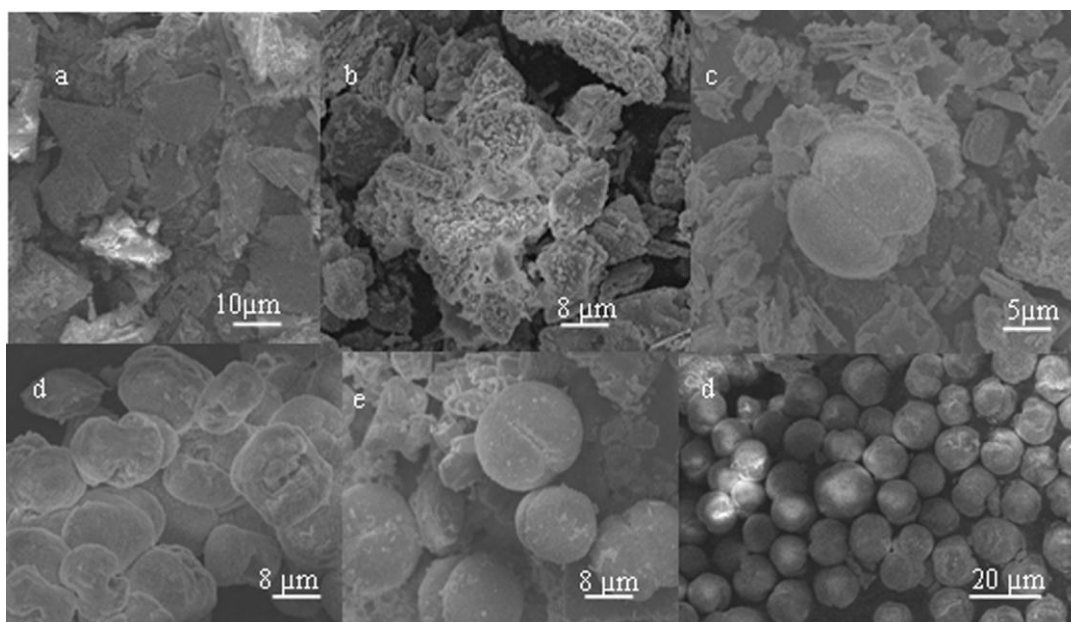


Fig. S2 The SEM images of the LiMnPO_4 products collected by solvothermal treatment at $180\text{ }^\circ\text{C}$ at different intervals: (a) 4 h, (b) 8 h, (c) 10 h, (d) 12 h, (e) 13 h and (f) 24 h.

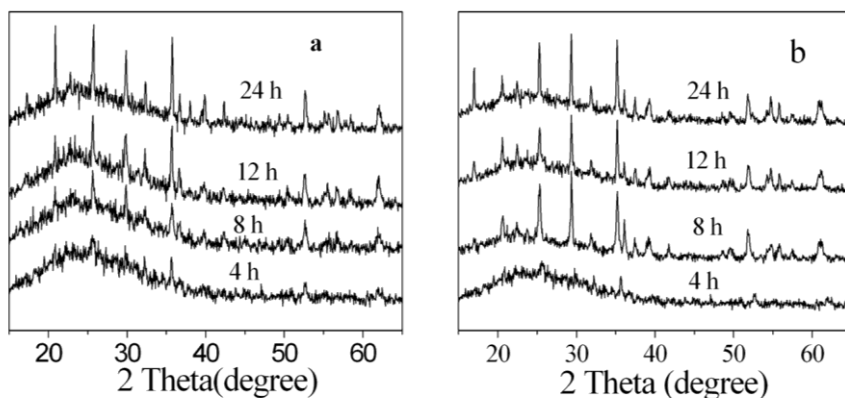


Fig. S3 XRD patterns of LiMPO₄ products prepared by solvothermal treatment at 180 °C for different reaction times: (a) LiFePO₄ and (b) LiMnPO₄.

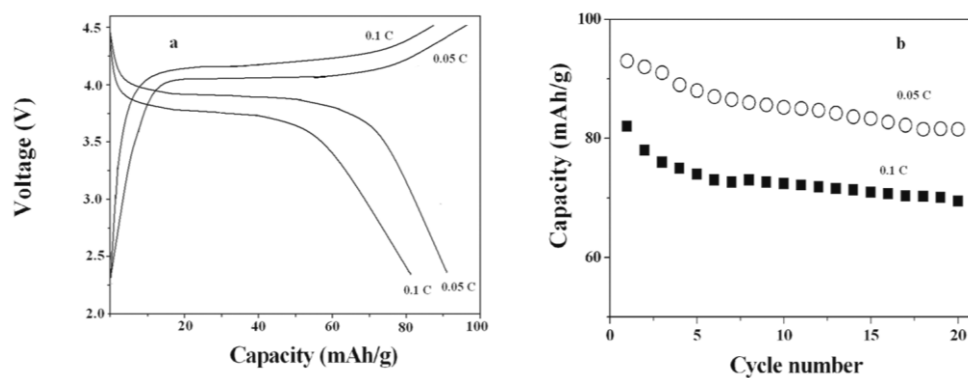


Fig. S4 The galvanostatic charge/discharge voltage profiles of LiMnPO₄ electrode between 2.3 and 4.5 V at different current densities, and (b) the corresponding cycling performance of at different current rates.