

Electronic Supplementary Information (ESI) for

Enhanced Cl₂ Sensing Performance by Decorating Discrete Au
Nanoparticles on Octahedral CdIn₂O₄ Crystals

Yanli Liu^{a,b}, Wei Wang^a, Tianquan Lin^c, Fuhui Liao^a, Fuqiang Huang^{a,c,}, Jianhua Lin^{a,*}*

^a College of Chemistry and Molecular Engineering and College of Engineering, Peking University, Beijing 100871, China; ^b College of Material Science and Engineering, Hunan University, Changsha 410082, China; ^c Shanghai Institute of Ceramics, Chinese Academy of Sciences, Shanghai 200050, China

Corresponding author:

E-mail: huangfq@pku.edu.cn

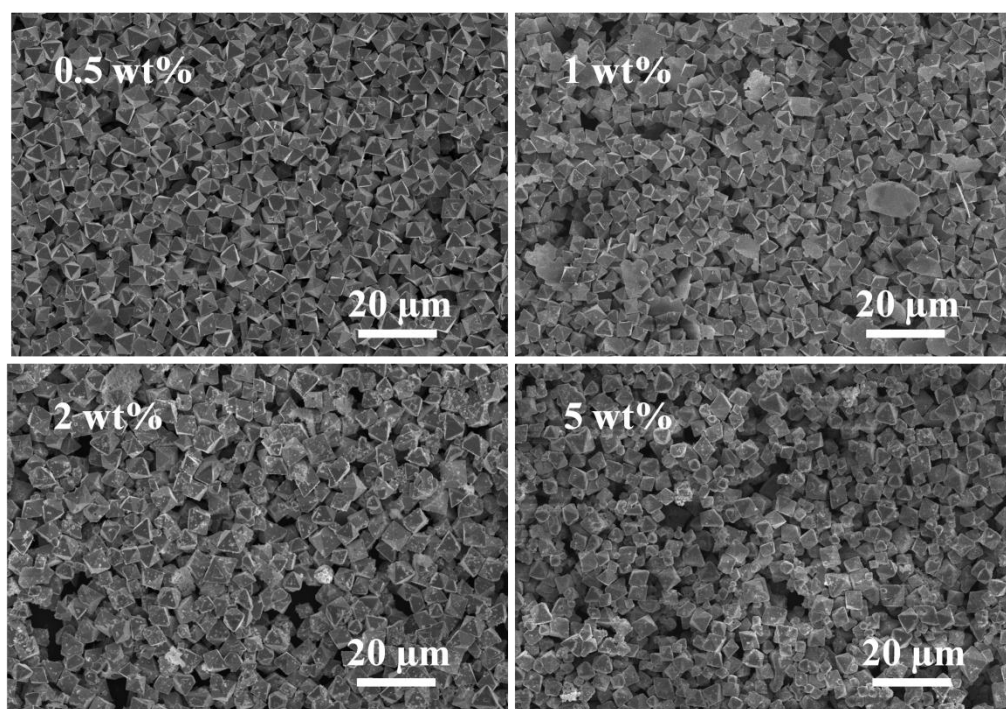


Fig. S1 Low-magnification SEM images of the samples with different amount of Au NPs: (a) 0.5 wt.%, (b) 1 wt.%, (c) 2 wt.%, and (d) 5 wt.%.