

## [Electronic Supplementary Information](#)

### **Electrospinning Graphite/SiC Mesoporous Hybrid Fibers with Tunable Structures**

*Huilin Hou<sup>1,2,ζ</sup>, Chunlei Dong<sup>3,ζ</sup>, Lin Wang<sup>2</sup>, Fengmei Gao<sup>2</sup>, Guodong Wei<sup>2</sup>, Jinju Zheng<sup>2</sup>, Xiaomin Cheng<sup>3</sup>, Bin Tang<sup>1,\*</sup>, and Weiyu Yang<sup>2,\*</sup>*

<sup>1</sup>Research Institute of Surface Engineering, Taiyuan University of Technology, Taiyuan City, 030024, P.R. China.

<sup>2</sup>Institute of Materials, Ningbo University of Technology, Ningbo City, 315016, P.R. China.

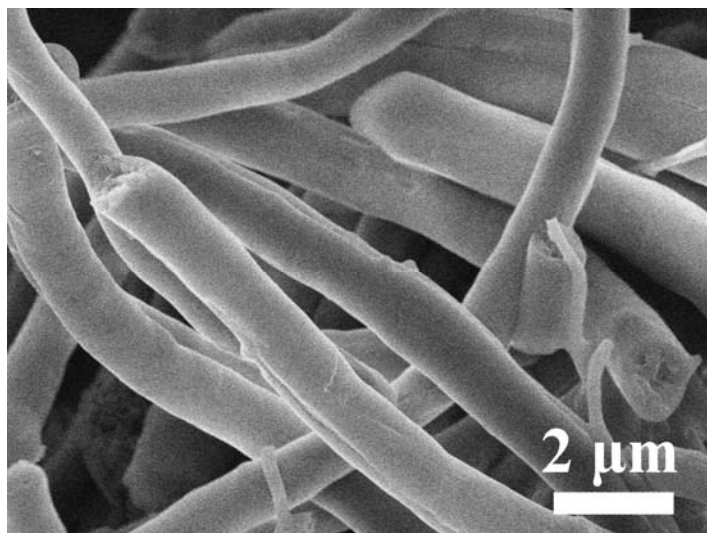
ζ: Equal contribution authors.

**Corresponding author E-mails:** [tangbin@tyut.edu.cn](mailto:tangbin@tyut.edu.cn) (B. Tang)

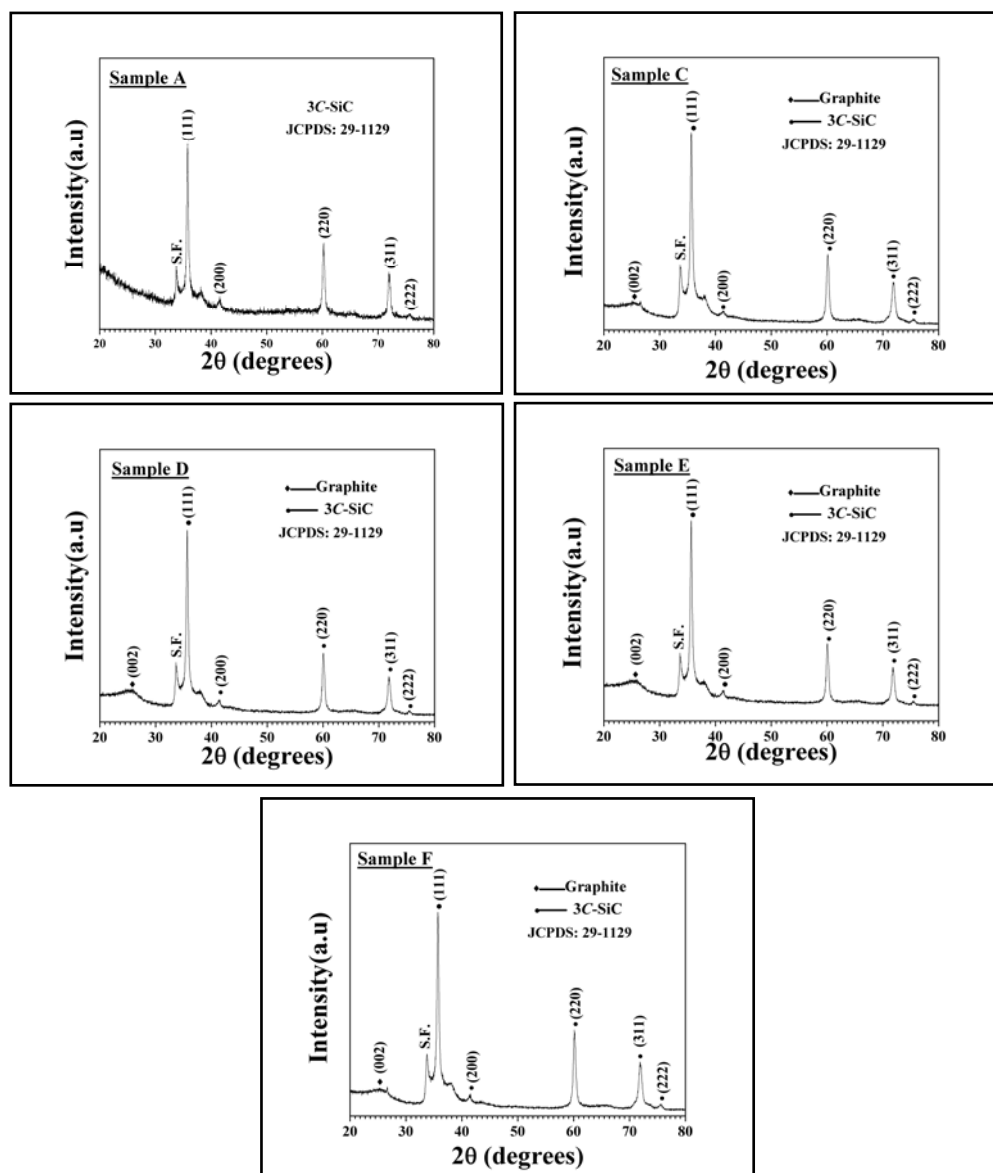
[weiyuyang@tsinghua.org.cn](mailto:weiyuyang@tsinghua.org.cn) (W. Yang)

**Tel:** +86-574-87080966

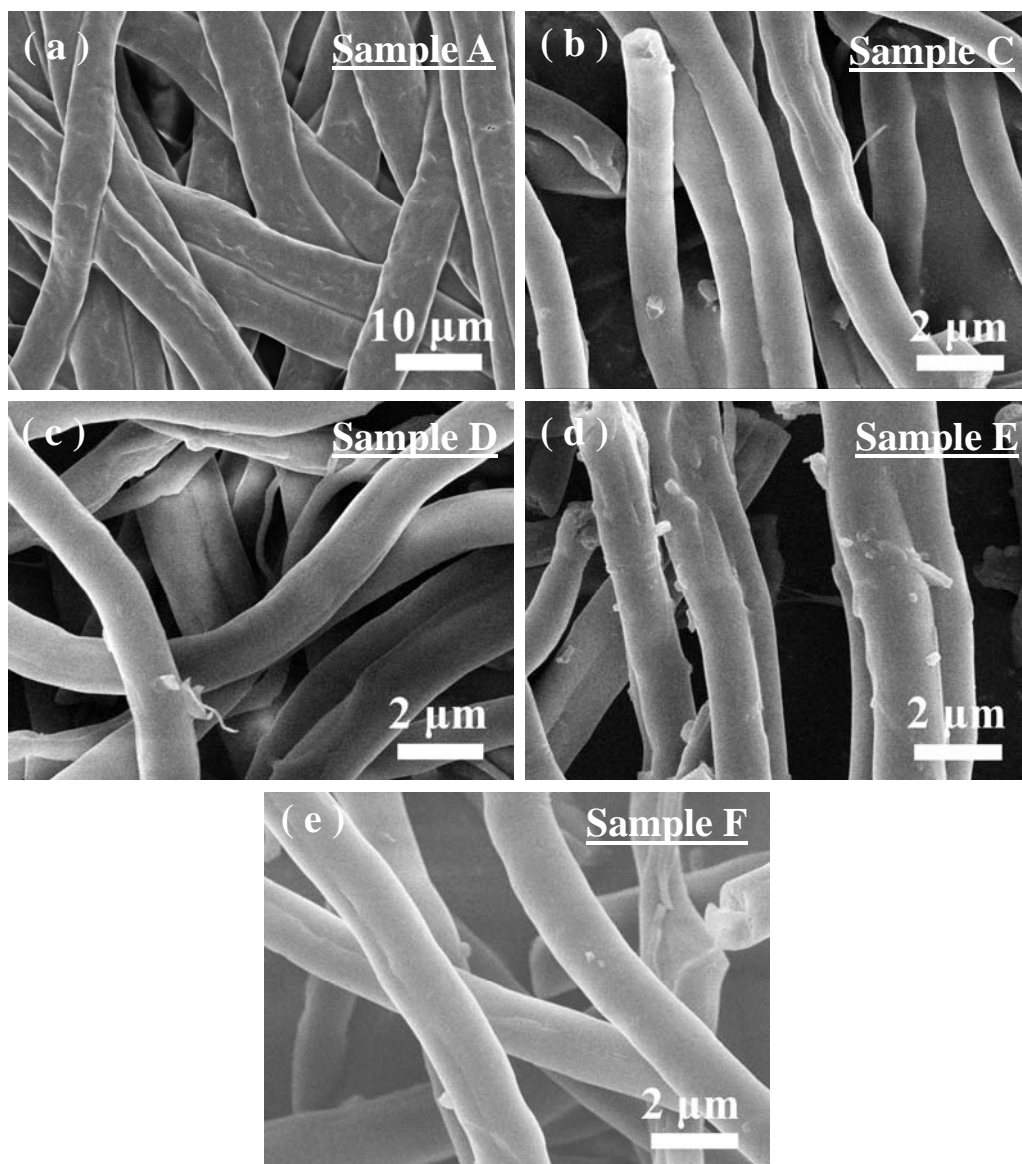
**Fax:** +86-574-87081221



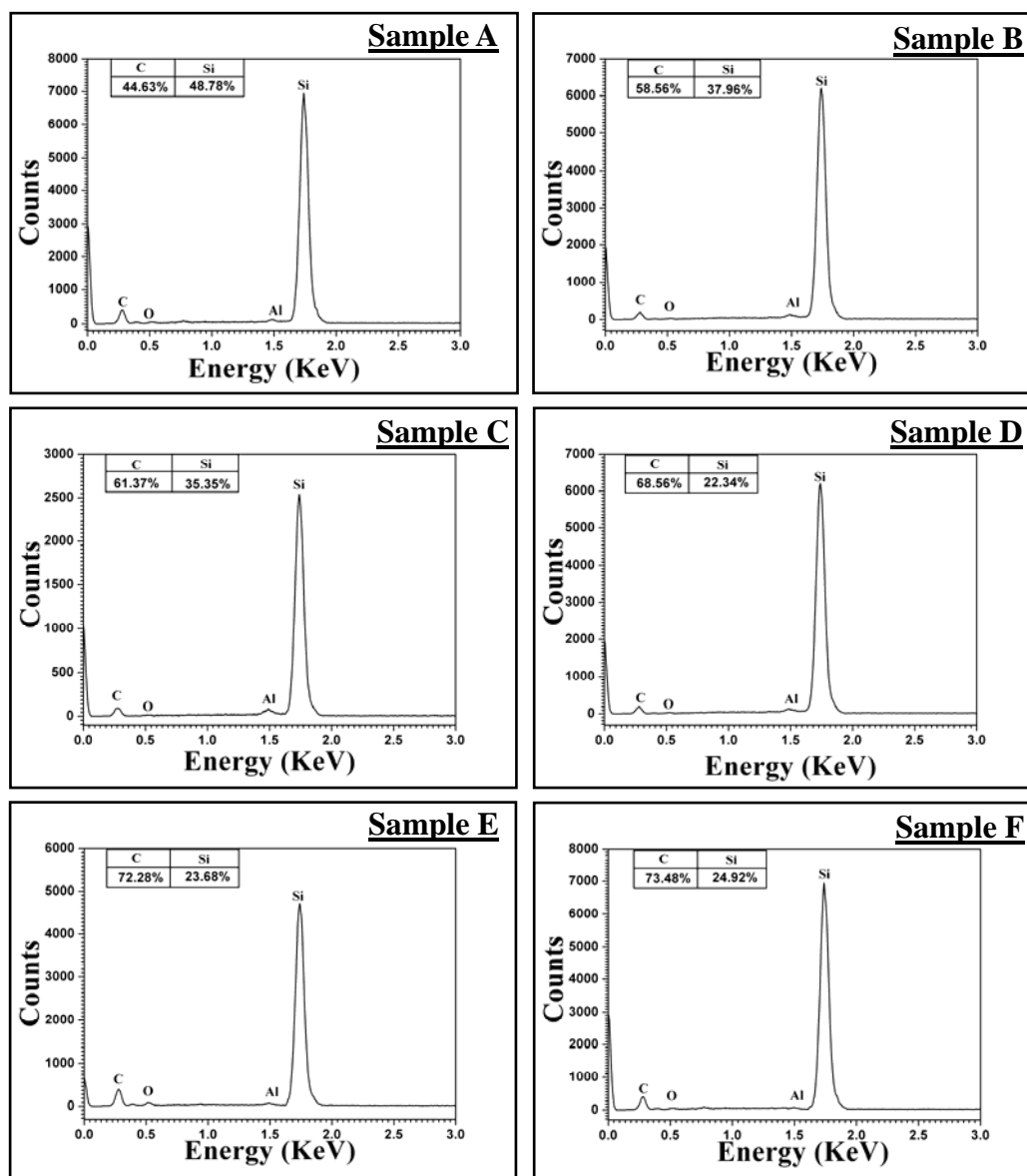
**Fig. S1.** A representative SEM image of as-spun polymer precursor fibers of Sample B.



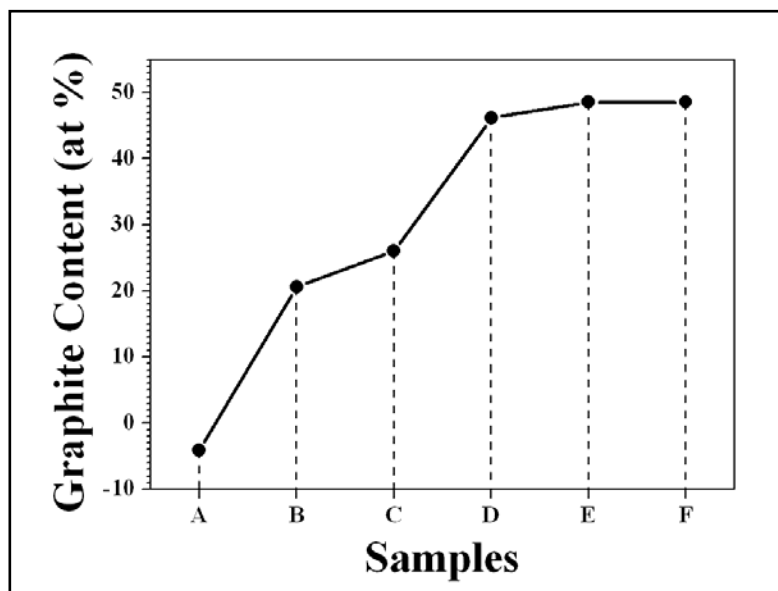
**Fig. S2.** Representative XRD patterns recorded from the as-synthesized mesoporous fibers of Sample A, C, D, E and F.



**Fig. S3** Typical SEM images of the electrospun polymer precursor fibers of Sample A, C, D, E and F.



**Fig. S4.** Typical EDS spectra of the mesoporous Graphite/SiC hybrid fibers of Sample A, B, C, D, E and F.



**Fig. S5.** Graphite concentrations within the fibers of Sample A-F.