

Supporting Information

Figure Captions

- Figure S1.** IR spectrum of compound **1**
Figure S2. TG and DTG curves of **1**
Figure S3. Energy dispersive spectroscopy for K⁺ ion exchanged sample
Figure S4. Energy dispersive spectroscopy for **1**
- Table S1.** Crystallographic data and refinement results of **1**.
Table S2. Selected bond lengths [Å] and angles [°] for **1**.

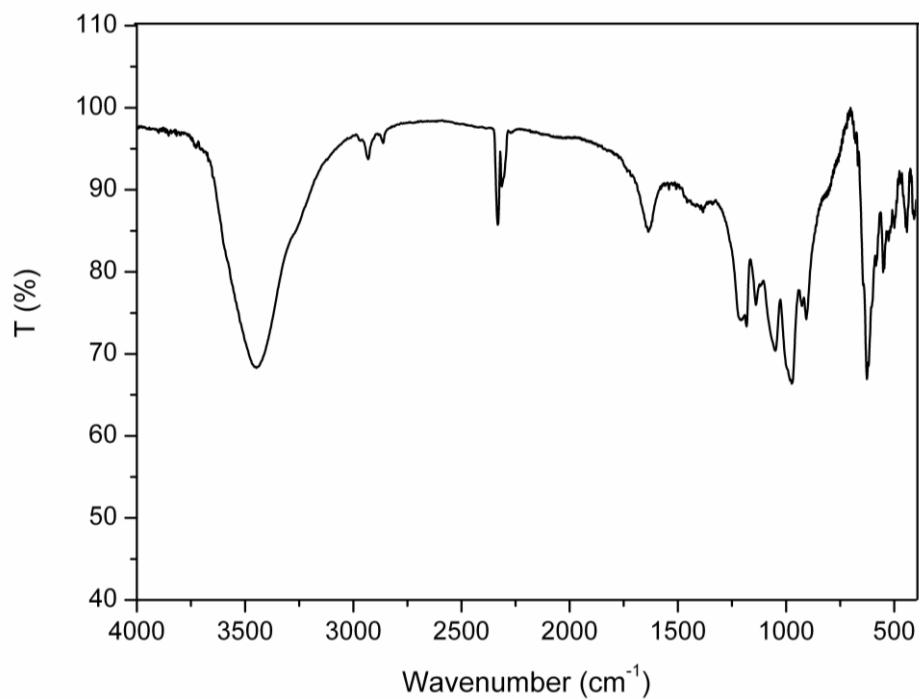


Figure S1.

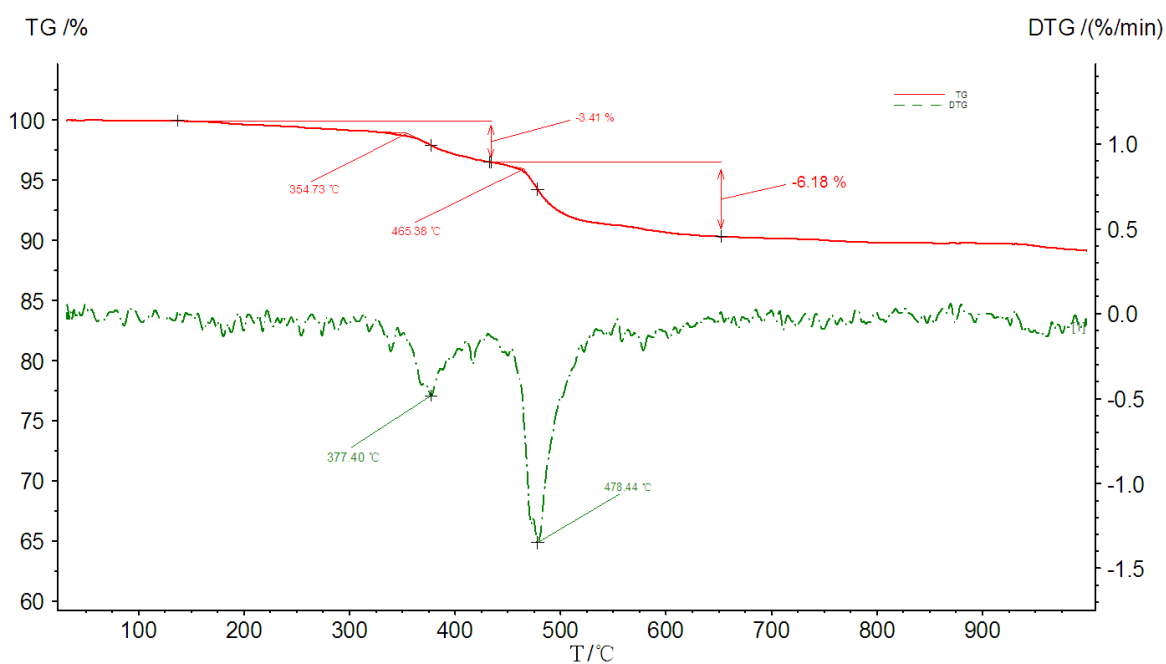


Figure S2.

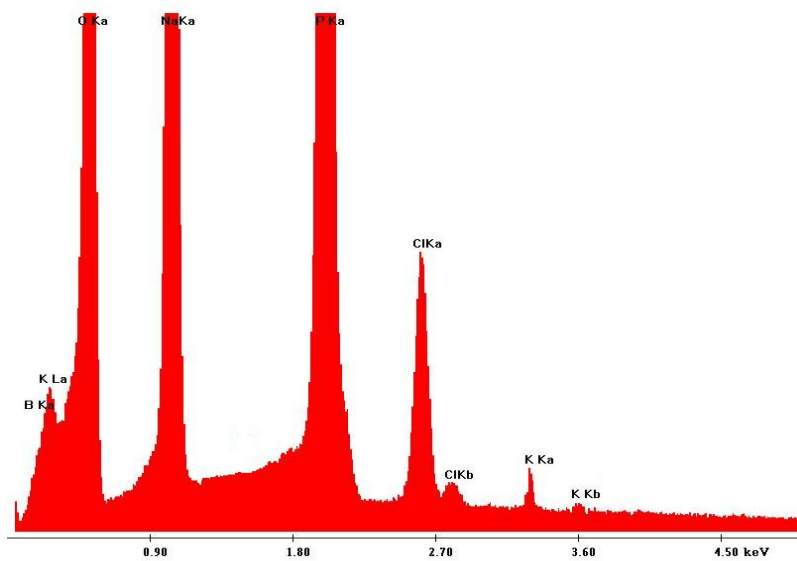


Figure S3.

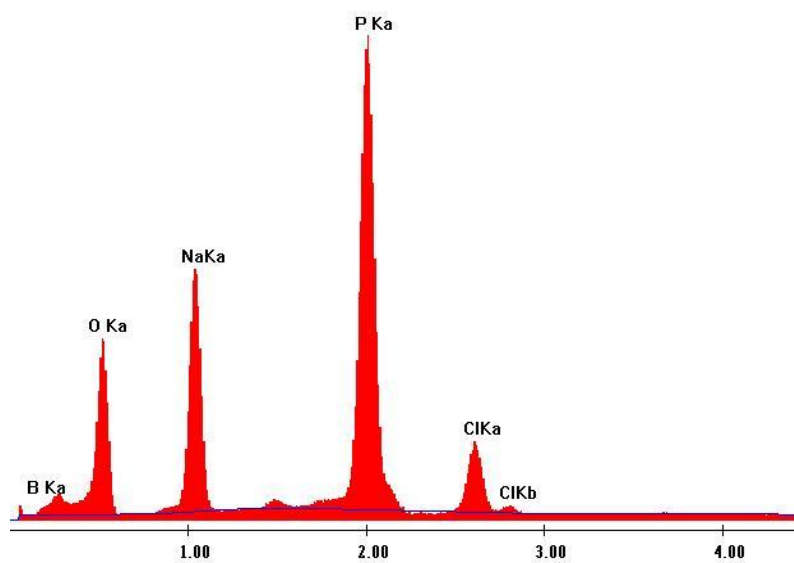


Figure S4.

Table S1

Empirical formula	B ₆ Cl ₂ H ₁₀ Na ₁₃ O ₄₇ P ₁₁
Formula weight	1537.38
Temperature/K	296(2)
Crystal system	cubic
Space group	<i>F</i> 23 (No. 196)
<i>a</i> /Å	20.479(7)
<i>V</i> /Å ³	8589(5)
<i>Z</i>	8
<i>D_c</i> / g·cm ⁻³	2.378
<i>μ</i> /mm ⁻¹	0.833
Crystal size/mm ³	0.18 x 0.16 x 0.12
2 <i>θ</i> range/ °	3.44-51.86
<i>hkl</i> range	-26 ≤ <i>h</i> ≤ 26, -13 ≤ <i>k</i> ≤ 26, -26 ≤ <i>l</i> ≤ 26
<i>F</i> (000)	6064
Reflections collected	13313
Unique data	934
<i>R</i> _{int}	0.0674
Goodness-of-fit on <i>F</i> ²	1.061
<i>R</i> ₁ ^{<i>a</i>} [<i>I</i> > 2σ (<i>I</i>)]	<i>R</i> ₁ = 0.0504, <i>wR</i> ₂ = 0.1171
<i>wR</i> ₂ ^{<i>b</i>} (all data)	<i>R</i> ₁ = 0.0541, <i>wR</i> ₂ = 0.1187

Table S2

B(1)-O(3)	1.437(8)	O(5)-B(1)-O(2)	109.0(5)
B(1)-O(5)	1.472(9)	O(8)#1-B(1)-O(2)	108.7(5)
B(1)-O(8)#1	1.458(8)	O(1)-P(1)-O(2)#2	114.2(2)
B(1)-O(2)	1.474(8)	O(1)-P(1)-O(2)	114.2(2)
P(1)-O(1)	1.493(4)	O(2)#2-P(1)-O(2)	104.3(2)
P(1)-O(2)#2	1.557(5)	O(1)-P(1)-O(2)#3	114.2(2)
P(1)-O(2)	1.557(5)	O(2)#2-P(1)-O(2)#3	104.3(2)
P(1)-O(2)#3	1.557(5)	O(2)-P(1)-O(2)#3	104.3(2)
P(2)-O(4)	1.491(6)	O(4)-P(2)-O(4)#4	115.0(5)
P(2)-O(4)#4	1.491(6)	O(4)-P(2)-O(3)	108.9(3)
P(2)-O(3)	1.577(5)	O(4)#4-P(2)-O(3)	113.2(3)
P(2)-O(3)#4	1.577(5)	O(4)-P(2)-O(3)#4	113.2(3)
P(3)-O(7)	1.490(5)	O(4)#4-P(2)-O(3)#4	108.9(3)
P(3)-O(6)	1.541(5)	O(3)-P(2)-O(3)#4	96.2(4)
P(3)-O(8)	1.576(5)	O(7)-P(3)-O(6)	113.6(3)
P(3)-O(5)	1.558(5)	O(7)-P(3)-O(8)	112.7(3)
O(3)-B(1)-O(5)	108.7(6)	O(6)-P(3)-O(8)	105.2(3)
O(3)-B(1)-O(8)#1	112.3(5)	O(7)-P(3)-O(5)	111.9(3)
O(5)-B(1)-O(8)#1	109.5(5)	O(6)-P(3)-O(5)	109.3(3)
O(3)-B(1)-O(2)	108.5(5)	O(8)-P(3)-O(5)	103.4(3)

Symmetry code: #1: $-z + 3/2, x, -y + 3/2$; #2: y, z, x ; #3: z, x, y ; #4: $-x+2, -y+2, z$.