

Supportion 1

The atomic ratio of Ni and Fe in the NiFe_x/OMC samples can be tested by EDX. It indicates the ratio of Ni to Fe is 1:0.95, 1:1.9, respectively for the NiFe/OMC and NiFe_2/OMC samples.

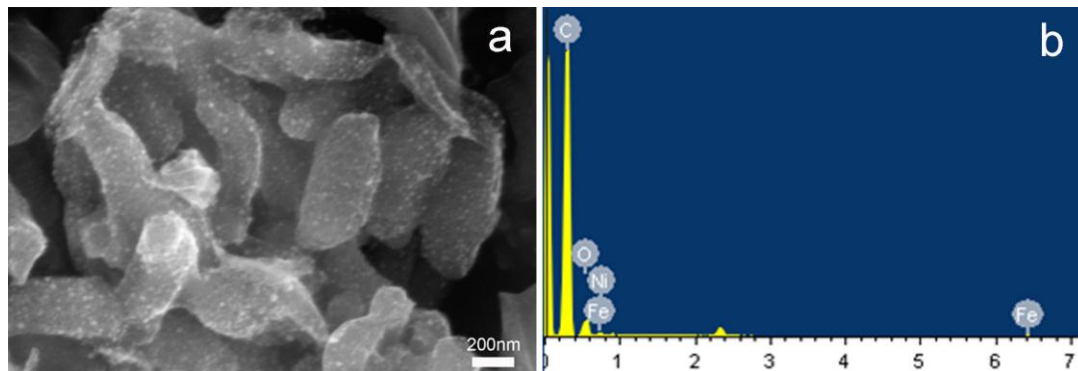


Figure S1 SEM and EDS images of NiFe_2/OMC sample.

HRTEM lattice image reveals that NiFe_2 nanoparticles are spherical and crystalline (Figure S2). The lattice spacing of 0.1739 nm corresponds to the (111) plane of face-centred cubic (fcc) Ni.

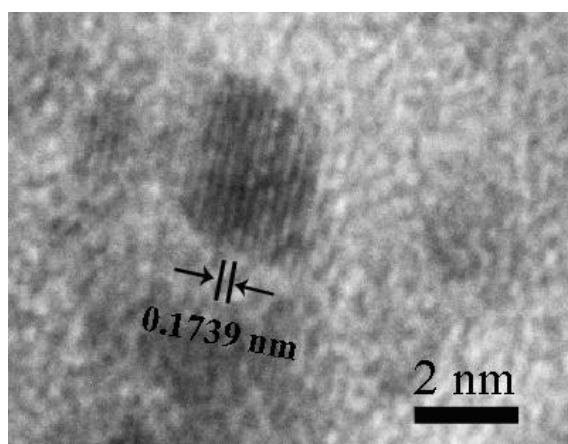


Figure S2 HRTEM lattice fringe morphology of as-synthesized NiFe_2/OMC .