

Supporting information

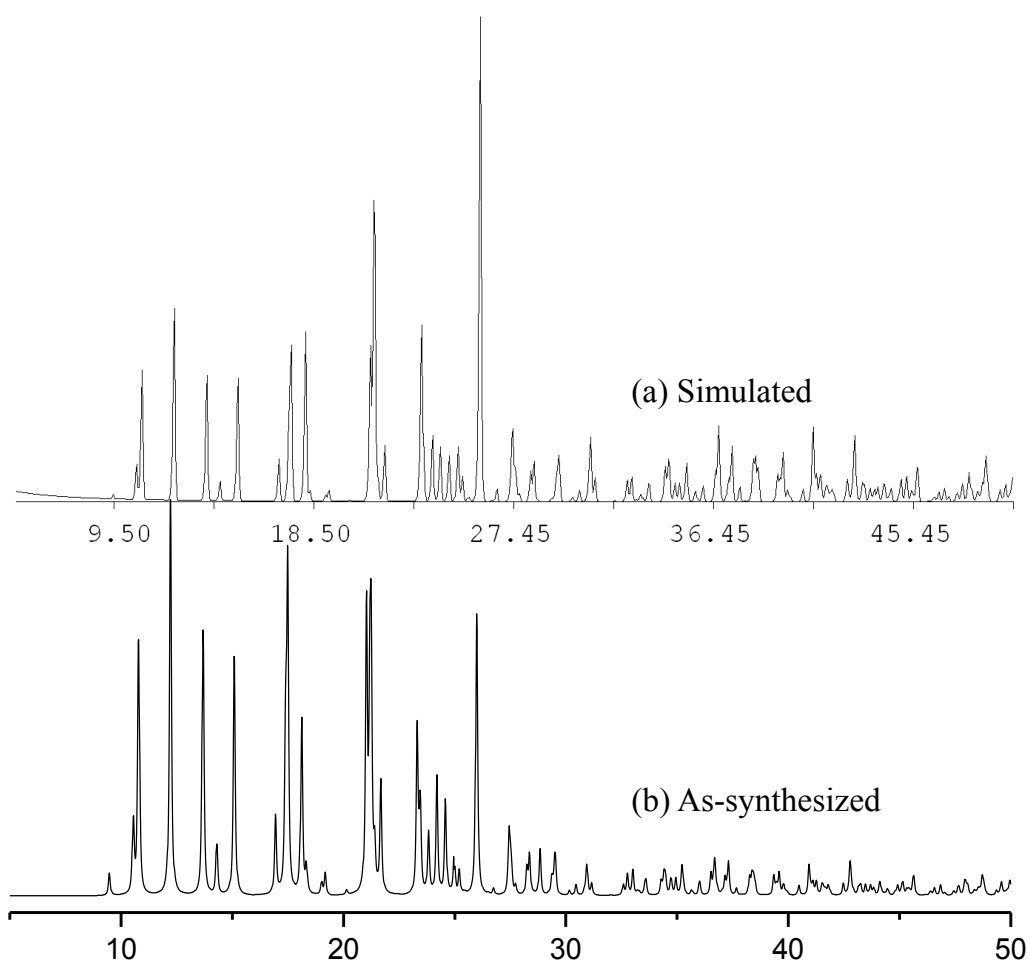


Fig. S1 X-Ray powder patterns for **2**: (a) calculated on the basis of the structure determined by single-crystal X-ray diffraction. (b) X-ray diffractograms of an original sample of **2**.

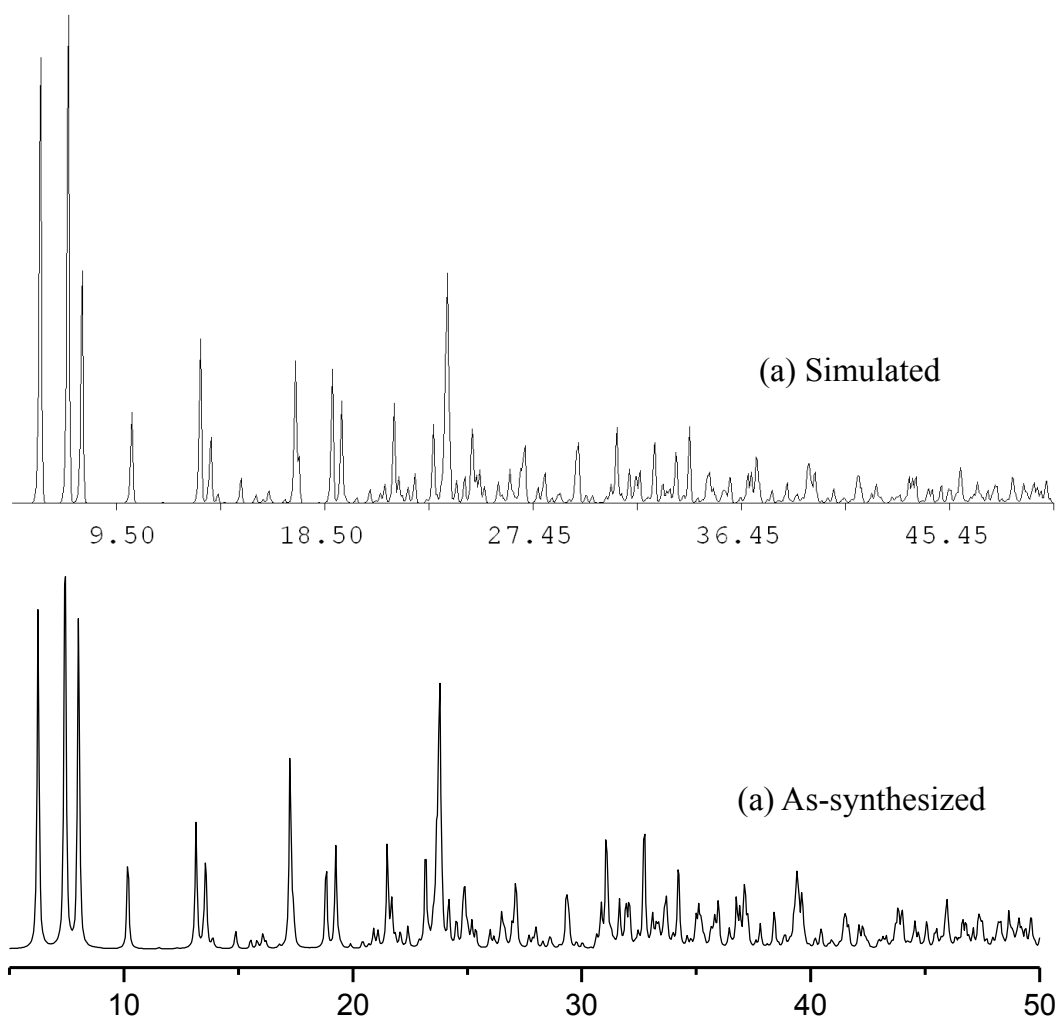


Fig. S2 X-Ray powder patterns for **3**: (a) calculated on the basis of the structure determined by single-crystal X-ray diffraction. (b) X-ray diffractograms of an original sample of **3**.

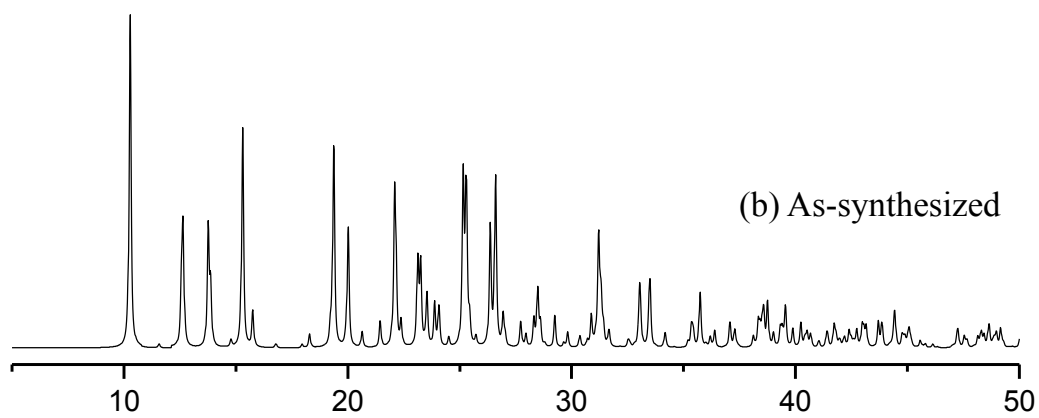
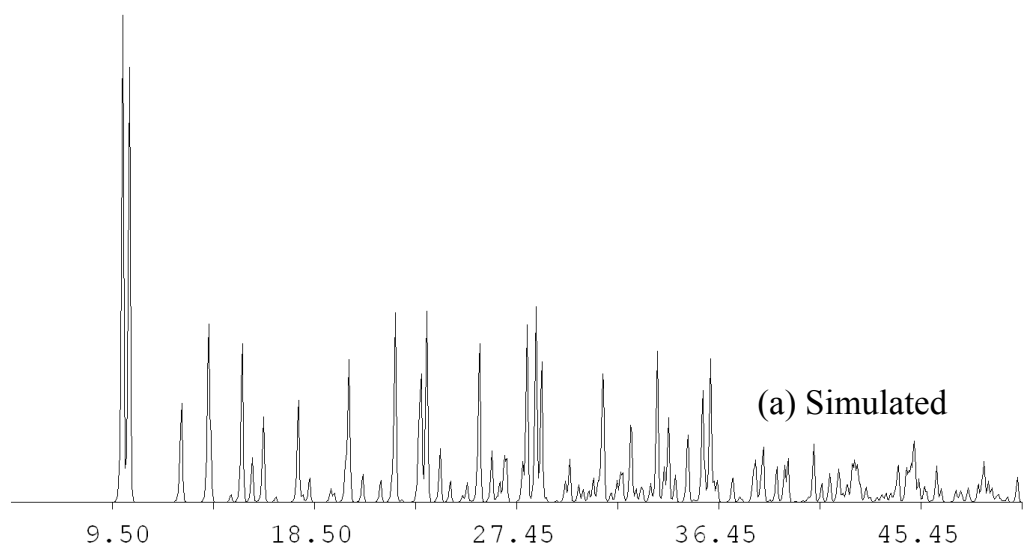


Fig. S3 X-Ray powder patterns for **4**: (a) calculated on the basis of the structure determined by single-crystal X-ray diffraction. (b) X-ray diffractograms of an original sample of **4**.

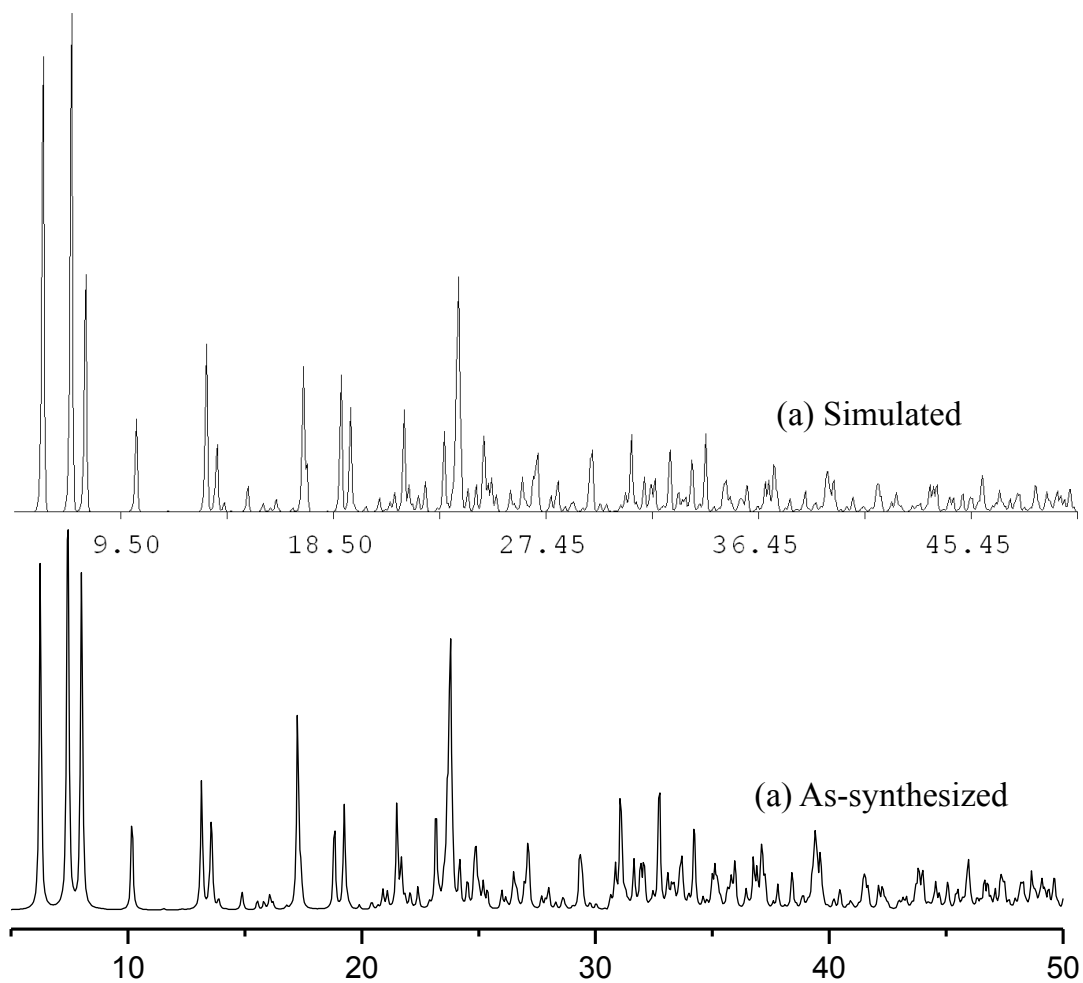


Fig. S4 X-Ray powder patterns for **5**: (a) calculated on the basis of the structure determined by single-crystal X-ray diffraction. (b) X-ray diffractograms of an original sample of **5**.

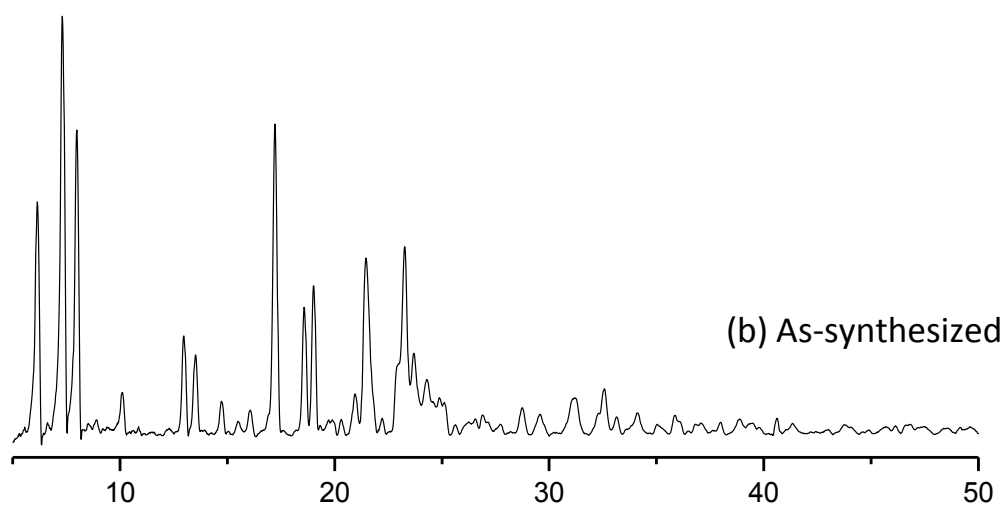
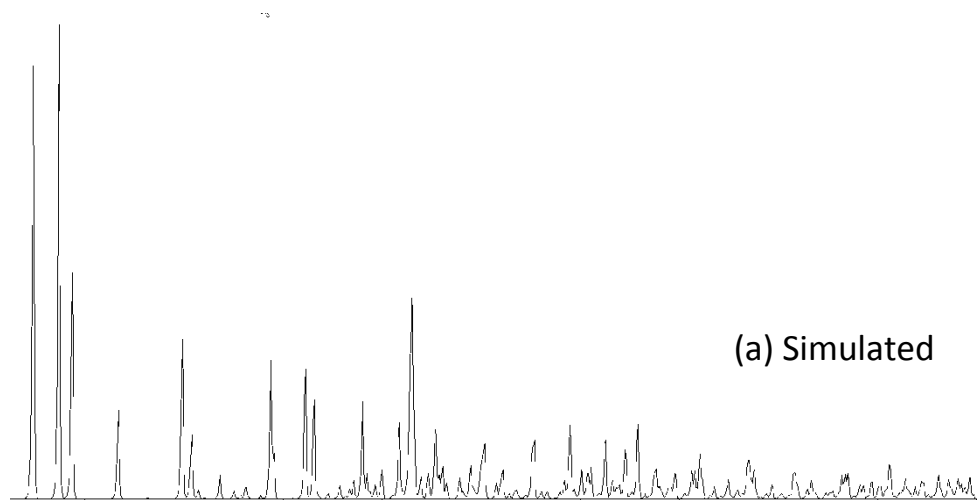


Fig. S5 X-Ray powder patterns for **6**: (a) calculated on the basis of the structure determined by single-crystal X-ray diffraction. (b) X-ray diffractograms of an original sample of **6**.

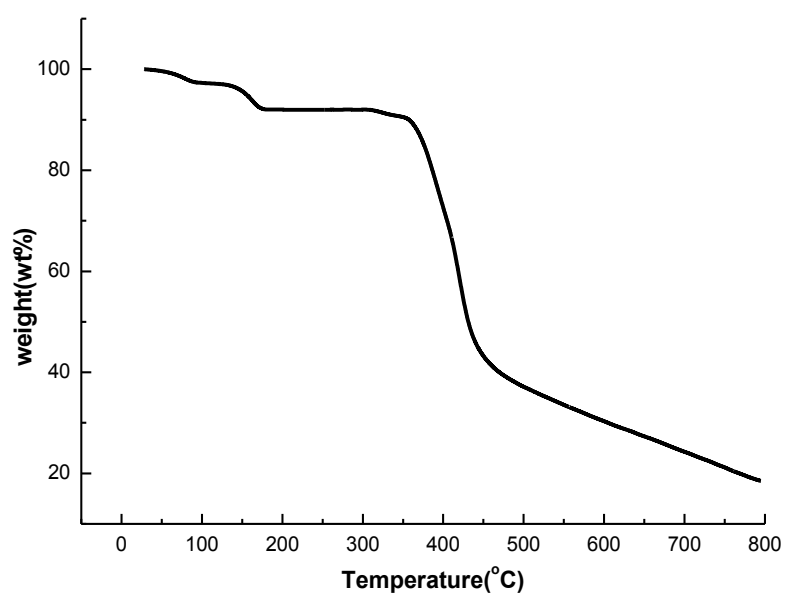


Figure S6 TGA curve of **1**.

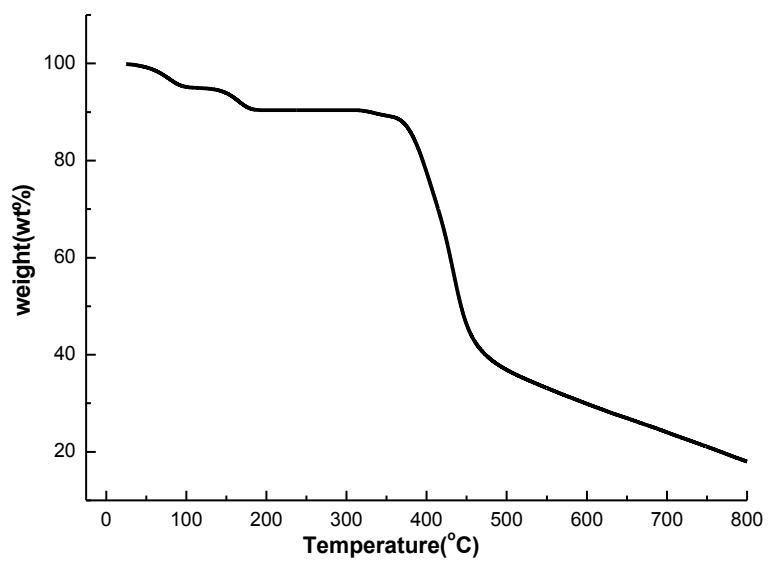


Figure S7 TGA curve of **2**.

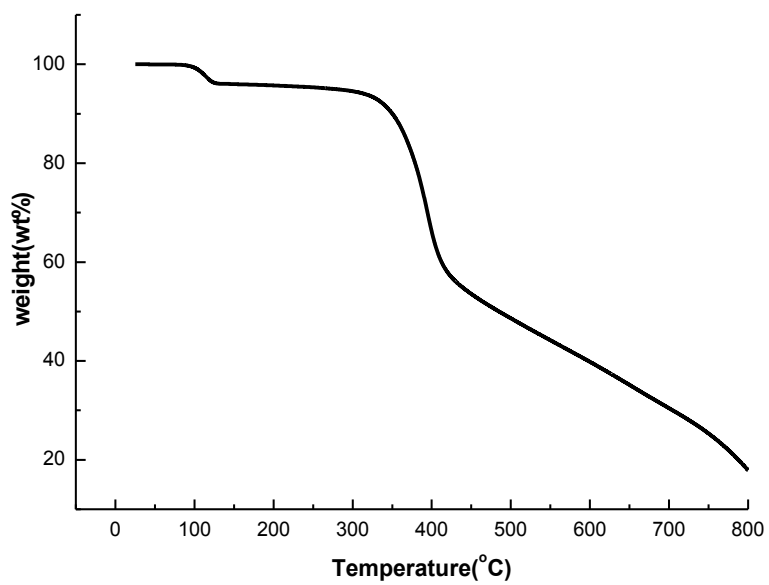


Figure S8 TGA curve of **3**.

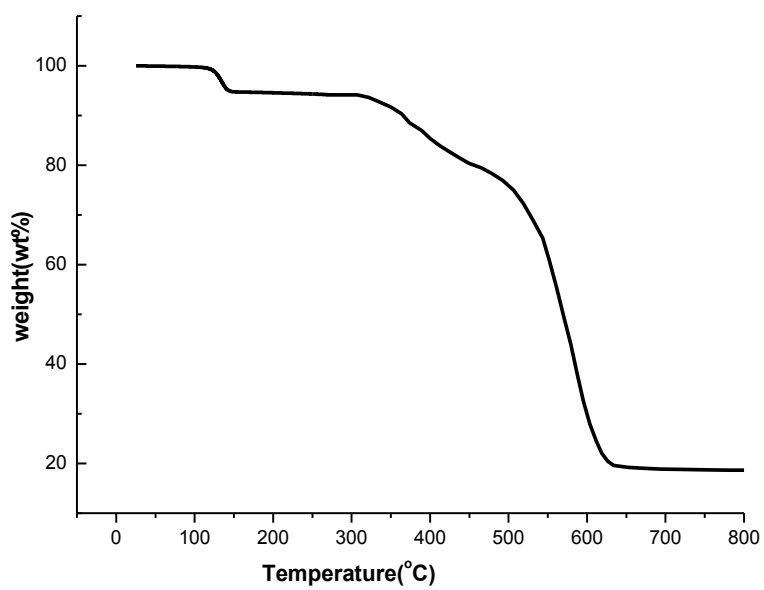


Figure S9 TGA curve of **4**.

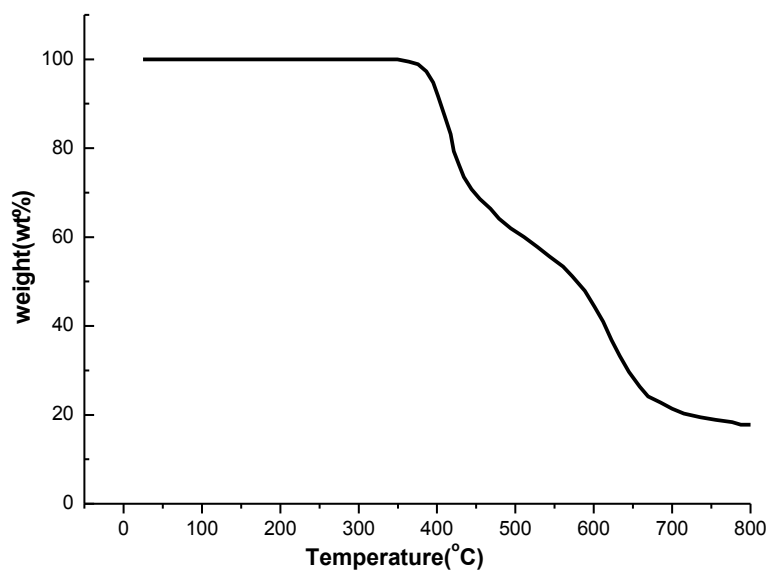


Figure S10 TGA curve of **5**.

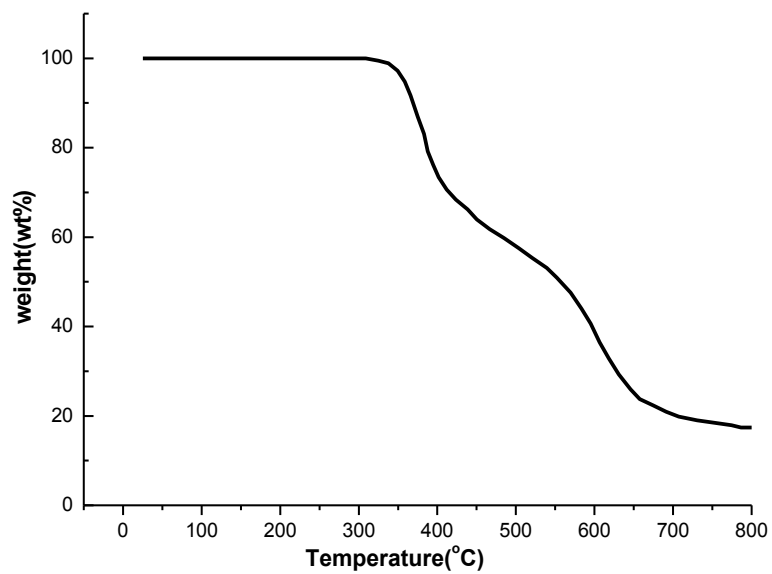


Figure S11 TGA curve of **6**.

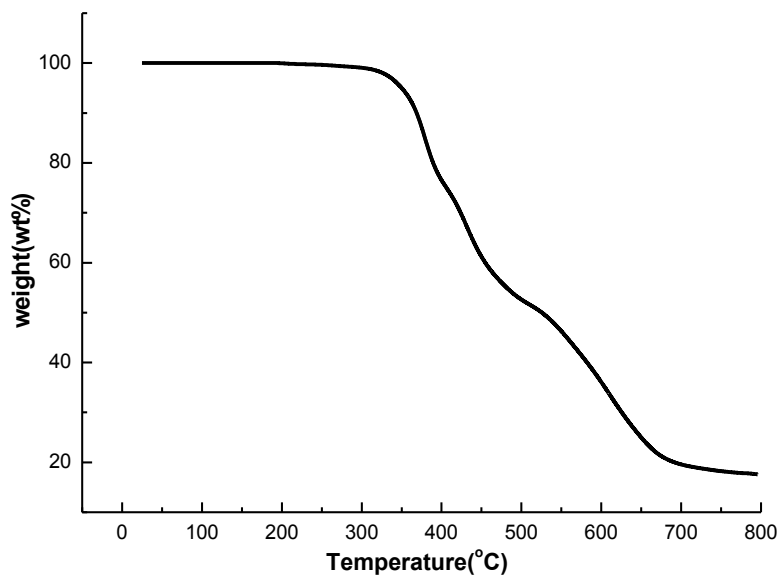


Figure S12 TGA curve of **7**.