

Electronic supplementary information

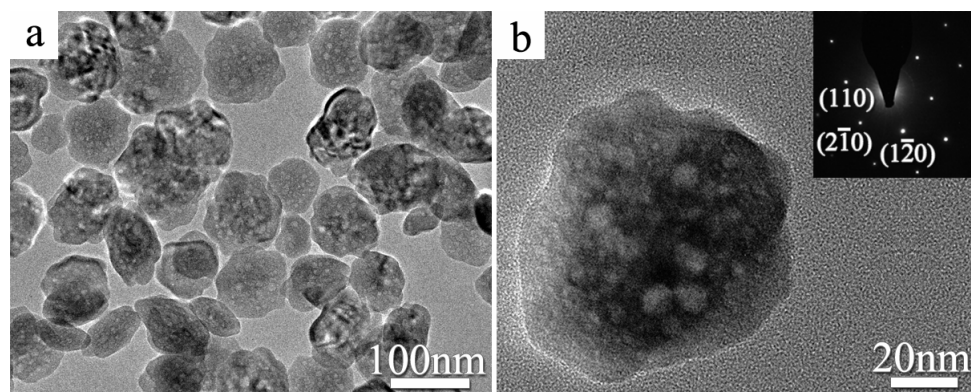


Fig. S1 TEM images of mesocrystalline α -Fe₂O₃ nanoplates calcined at 500 °C. Inset in (b) is the corresponding SAED pattern.

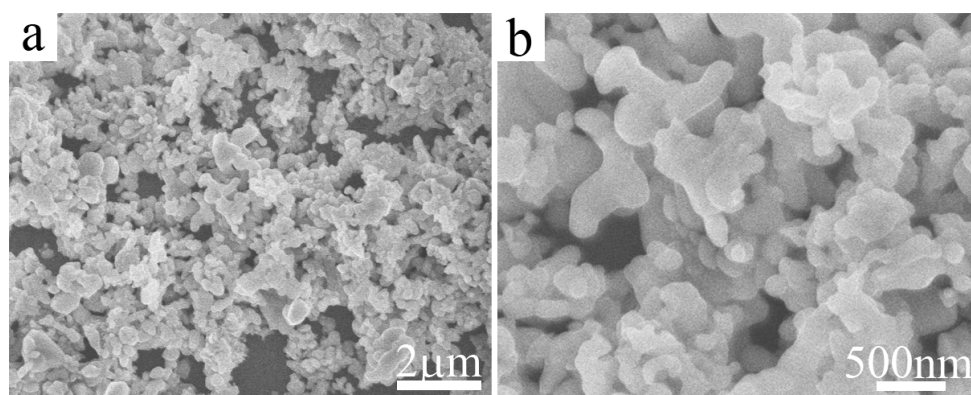


Fig. S2 SEM images of commercial α -Fe₂O₃ powders obtained from Sinopharm Chemical Reagent Co., Ltd.