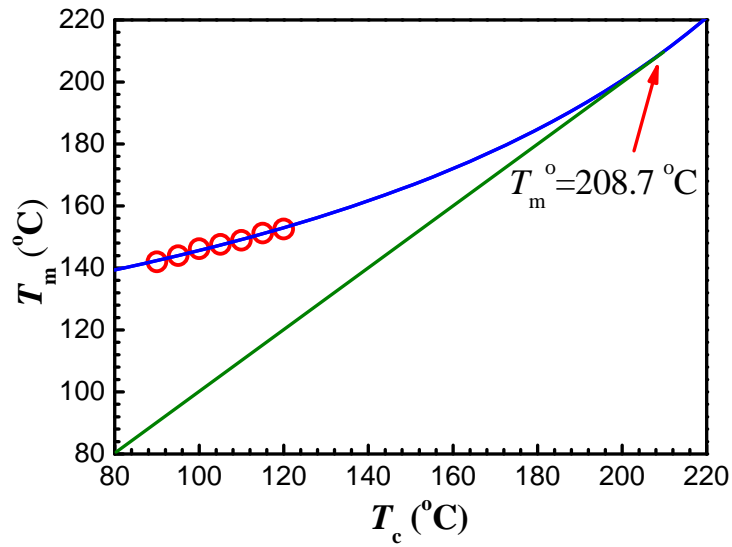


**Supplementary information for**

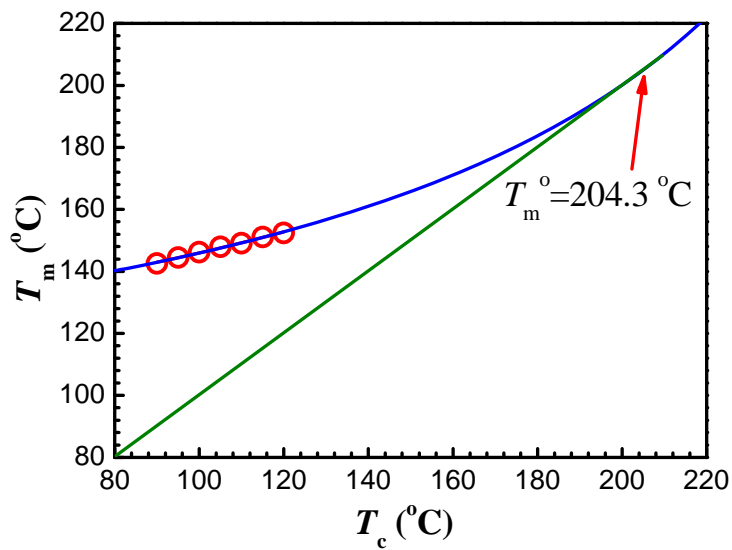
**Studies on crystallization kinetics of bimodal long chain  
branched polylactides†**

Jing Bai, Huagao Fang, Yaqiong Zhang, and Zhigang Wang\*

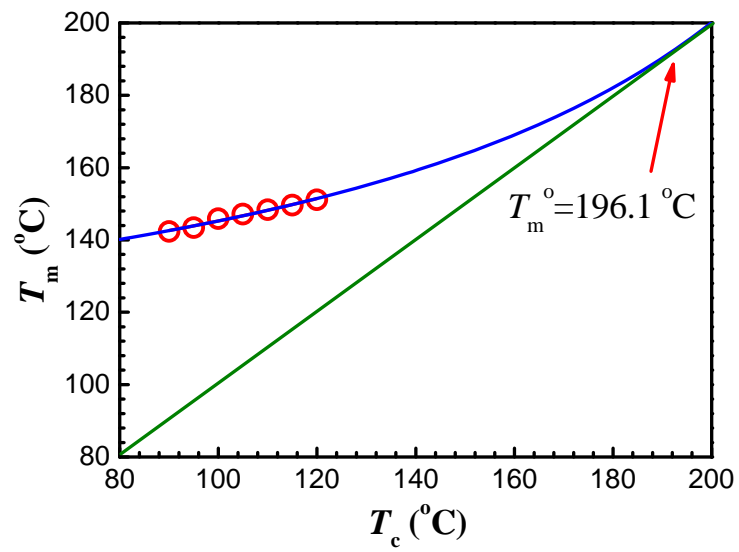
*CAS Key Laboratory of Soft Matter Chemistry, Department of Polymer Science and Engineering, Hefei National Laboratory for Physical Sciences at the Microscale, University of Science and Technology of China, Hefei, Anhui Province 230026, P. R. China. E-mail: zgwang2@ustc.edu.cn; Fax: +86 551-63607703; Tel: +86 551-63607703*



**Fig. S1** Change of melting temperature,  $T_m$  as a function of crystallization temperature,  $T_c$  for LCB-PLA1. The solid blue curve is obtained through the nonlinear extrapolation on the basis of eq. 1.



**Fig. S2** Change of melting temperature,  $T_m$  as a function of crystallization temperature,  $T_c$  for LCB-PLA2. The solid blue curve is obtained through the nonlinear extrapolation on the basis of eq. 1.



**Fig. S3** Change of melting temperature,  $T_m$  as a function of crystallization temperature,  $T_c$  for LCB-PLA3. The solid blue curve is obtained through the nonlinear extrapolation on the basis of eq. 1.